

L

2

This page contains a handwritten musical score consisting of 14 staves. The music is written in G major (one sharp) and begins with a treble clef and a common time signature (C). The score includes various rhythmic figures, such as eighth and sixteenth notes, and rests. There are several time signature changes: 3/4, 2/4, and 3/4. The notation includes slurs, ties, and some triplets. A small box containing the number '2' is located at the top left of the first staff. The paper shows signs of age, including some staining and a small mark at the bottom left.

Handwritten musical score on ten staves. The notation includes treble clefs, a key signature of one flat, and various rhythmic values. The piece concludes with a double bar line and the word "Fine" written in cursive.

Four empty musical staves at the bottom of the page.

N. KAKKIDIS  
ATHENS

ga - nae - oas loi u - jio ixi - mo - ga sus.  
Lau - da - lau lai may - ja sus u - ga - ju sus, kai  
na - pi - nai oro - gi lau lo - mo - pi sus.  
tu go - pe - oia sou go - ju tu - lau a - sou. Ki -  
ga - nae - oas ~~oas~~ loi u - pa - ro - ni la - sou.  
Lpi - go - nau nai - do - po tu - re - lae na  
ga kai mox - dia nau pa - fi - re lpi - a uae -  
na - ga lau - loi e - pou - sus e - lau,  
le - pu - pu - au, kai ra - ni ois - le - pou,  
ni - ju pu - au. lau - loi e - pou - sus ep - lau  
nai ai - gri - dia, kai dou - va - tu - oas  
lou - do - ois ai - gri - dia, e - mox - dia  
epi - au oi - glu go - ju - pi - vos mi,  
na - pi - dap - pe - pe sou e - naia - re - la - pi - vos.

3  
N. STAMBOULIS  
ATHINA

3/4

2/4

Τὴν - νῦν - οὐ - ρὰ - ναὶ - πο -

2/4

ῖσι - ἀ - γί - ναι - σο - ραί - τ' α - ρι - σά - ρι

2/4

τα - ρί - βόα - ραί - τ' α - ρι - σά - ρι τα - ρί -

Ε. ΚΑΜΕΩΤΑΣ  
ΑΘΗΝΑΙ

Handwritten musical score for the first system, featuring a vocal line and piano accompaniment. The lyrics are: *Πασι - πατ ναι εἰς - τὸν ναι πῶς ἴε -*

Handwritten musical score for the second system, continuing the vocal and piano parts. The lyrics are: *πῶς - οὐ - ἴε - πῶς*

Empty musical staff.

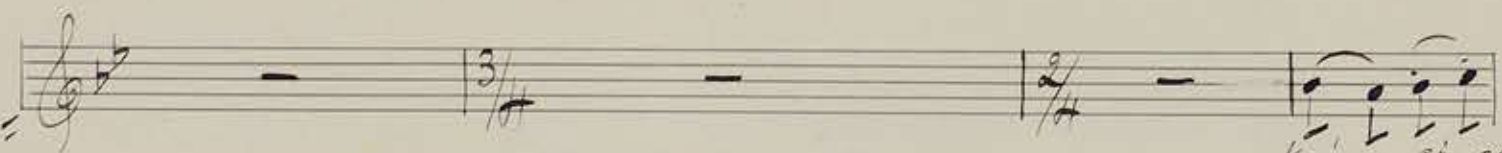
Handwritten musical score for the third system, featuring piano accompaniment.

Empty musical staff.

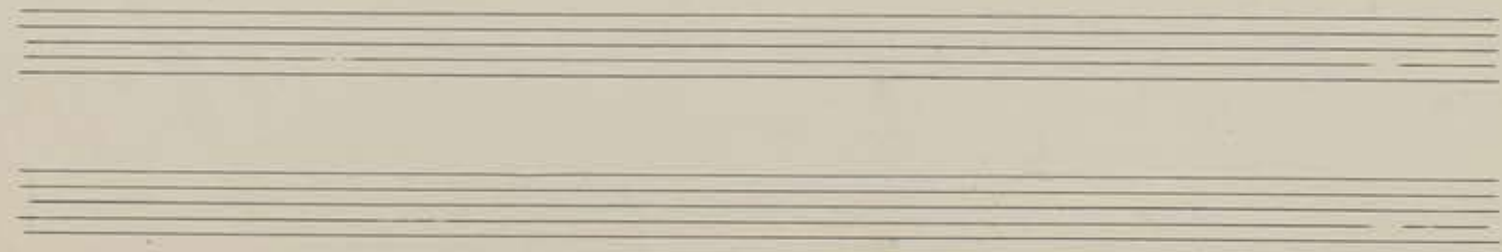
Handwritten musical score for the fourth system, featuring piano accompaniment.

Two empty musical staves at the bottom of the page.

Ε. ΣΤΑΜΑΤΙΑΣ  
ΑΘΗΝΑΙ



*kar - si - pan*



LIBRARY  
MUSEUM  
OF THE  
CITY OF BOSTON

Handwritten musical score for the first system. It consists of three staves: a vocal line in treble clef with a key signature of one sharp (F#) and a 2/4 time signature, and two piano accompaniment staves in G major (one in treble and one in bass clef). The lyrics under the vocal line are "kai - et - par - nei - mia - ju - je". The piano part features a prominent triplet of eighth notes in the right hand.

Handwritten musical score for the second system. It consists of three staves: a vocal line in treble clef with a key signature of one flat (Bb) and a 2/4 time signature, and two piano accompaniment staves in Bb major (one in treble and one in bass clef). The lyrics under the vocal line are "pi - sa - je - je - pi - . kai - et - par". The piano part continues with similar accompaniment patterns.

Handwritten musical score for the third system. It consists of three staves: a vocal line in treble clef with a key signature of one flat (Bb) and a 2/4 time signature, and two piano accompaniment staves in Bb major (one in treble and one in bass clef). The lyrics under the vocal line are "lu - je - nai - na kai - et - par lu - je". The piano part features a triplet of eighth notes in the right hand.

Handwritten musical score for the fourth system. It consists of three staves: a vocal line in treble clef with a key signature of one flat (Bb) and a 2/4 time signature, and two piano accompaniment staves in Bb major (one in treble and one in bass clef). The lyrics under the vocal line are "nai - na - et - par - mi - cor - por - ti - on - e - na". The piano part features a triplet of eighth notes in the right hand.



10  
N. ΣΤΑΜΑΤΙΑΣ  
ΑΘΗΝΑΙ

Handwritten musical score for the first system. It consists of a vocal line and a piano accompaniment. The vocal line starts with a treble clef, a key signature of one sharp (F#), and a 3/4 time signature. The lyrics "ρε - μου - ρε - ρε" are written below the notes. The piano accompaniment is written in two staves (treble and bass clefs) with a key signature of one sharp and a 3/4 time signature. The first measure of the piano part features a wavy line indicating a tremolo effect.

Handwritten musical score for the second system. It consists of a vocal line and a piano accompaniment. The vocal line is mostly blank, with a few notes and rests. The piano accompaniment is written in two staves (treble and bass clefs) with a key signature of one sharp and a 3/4 time signature. It features several triplet markings (indicated by a '3' above the notes) and various chordal textures.

Handwritten musical score for the third system. It consists of a vocal line and a piano accompaniment. The vocal line is mostly blank. The piano accompaniment is written in two staves (treble and bass clefs) with a key signature of one sharp and a 3/4 time signature. It features several triplet markings and complex chordal structures.

Handwritten musical score for the fourth system. It consists of a vocal line and a piano accompaniment. The vocal line is mostly blank. The piano accompaniment is written in two staves (treble and bass clefs) with a key signature of one sharp and a 3/4 time signature. It features several triplet markings and complex chordal structures.

N. ΣΚΑΛΩΤΑΣ  
ΑΓΙΝΑΙ

Handwritten musical notation for the first system. The vocal line (treble clef) contains the lyrics: *νῦν νῦν ῥοῦ - ροῦ - ροῦ νῦν ῥοῦ - ροῦ*. The piano accompaniment (grand staff) features a simple harmonic accompaniment.

Handwritten musical notation for the second system. The vocal line (treble clef) contains the lyrics: *αὐτὸ Ἰη - σοῦ - οὐ - ρῆ - ρῆ Ἰη - σοῦ Ἰη - σοῦ*. The piano accompaniment (grand staff) continues with harmonic support.

Handwritten musical notation for the third system. The vocal line (treble clef) contains the lyrics: *νῦν ῥοῦ - ροῦ Ἰη - σοῦ Ἰη - σοῦ ῥοῦ - ροῦ - ροῦ ῥοῦ - ροῦ*. The piano accompaniment (grand staff) includes some chromatic movement in the bass line.

Handwritten musical notation for the fourth system. The vocal line (treble clef) contains the lyrics: *ῥοῦ - ροῦ Ἰη*. The piano accompaniment (grand staff) concludes the piece with a final chord.

Four empty musical staves at the bottom of the page, consisting of two grand staves (treble and bass clefs).





Handwritten musical score system 1. The vocal line (treble clef) begins with a 3/4 time signature and a key signature of one flat. The lyrics are: "Kia - ai hū mau - mau ōp - vi - ōa ma - ri - rau aī - pou - ōi - ōa, Kia - ai hū au -". The piano accompaniment (grand staff) follows the same time signature and key signature.

Handwritten musical score system 2. The vocal line continues with the lyrics: "ma - ōi - ōa - ōa ma - ri - rau aī - pou - ōi - ōa Kia - ai ...". The piano accompaniment continues with the same time signature and key signature.

Handwritten musical score system 3. This system is heavily crossed out with multiple diagonal lines. The vocal line and piano accompaniment are both obscured by these scribbles.

Handwritten musical score system 4. This system is also heavily crossed out with multiple diagonal lines. The vocal line and piano accompaniment are both obscured. The word "Fine" is written at the end of the system.

Ν. ΣΑΡΑΝΤΑΣ  
ΑΘΗΝΑΙ

Μο-νι-γε

εὐ-μὸν-γε-λά (γ)α-σο-φία

α-γάπη

εὐ-μὸν-γε-λά (γ)α-σο-φία

Handwritten musical notation system 1. The upper staff is in treble clef with a key signature of one sharp (F#) and a 3/4 time signature. It begins with a half note F#4, followed by a quarter note G4, and a triplet of eighth notes (A4, B4, C5). A fermata is placed over the triplet. The system concludes with a 2/4 time signature change, followed by a quarter note D5, a quarter note E5, and a quarter note F#5, all under a fermata. The lower staff is a grand staff with two empty staves.

Handwritten musical notation system 2. The upper staff is in treble clef with a key signature of one sharp (F#) and a 3/4 time signature. It starts with a half note F#4, followed by a quarter note G4, and a quarter note A4, all under a fermata. The system then changes to a 3/4 time signature with a quarter note B4, followed by a quarter rest, and a quarter note C5. The system concludes with a 2/4 time signature change, followed by a quarter note D5, a quarter note E5, and a quarter note F#5, all under a fermata. The lower staff is a grand staff with two empty staves.

Handwritten musical notation system 3. The upper staff is in treble clef with a key signature of one sharp (F#) and a 3/4 time signature. It begins with a half note F#4, followed by a quarter note G4, and a quarter note A4, all under a fermata. The system then changes to a 3/4 time signature with a quarter note B4, a quarter note C5, and a quarter note D5, all under a fermata. The system concludes with a quarter note E5, a quarter note F#5, and a quarter note G5, all under a fermata. The lower staff is a grand staff with two empty staves.

Handwritten musical notation system 4. The upper staff is in treble clef with a key signature of one sharp (F#) and a 3/4 time signature. It begins with a quarter note F#4, a quarter note G4, and a quarter note A4, all under a fermata. The system then changes to a 3/4 time signature with a quarter note B4, a quarter note C5, and a quarter note D5, all under a fermata. The system concludes with a quarter note E5, a quarter note F#5, and a quarter note G5, all under a fermata. The lower staff is a grand staff with two empty staves.

Handwritten musical score system 1. The system consists of a vocal line and a piano accompaniment line. The vocal line is in treble clef with a key signature of one sharp (F#) and a 3/4 time signature. It begins with a half note, followed by a quarter note, and then a series of eighth notes. The lyrics "do - me" are written under the first two notes, and "(v)a" and "xi - vo" are written under the subsequent notes. The piano accompaniment line is in grand staff notation and is currently empty.

Handwritten musical score system 2. The system consists of a vocal line and a piano accompaniment line. The vocal line is in treble clef with a key signature of two sharps (F# and C#) and a 2/4 time signature. It begins with a half note, followed by a quarter note, and then a series of eighth notes. The lyrics "A" and "E" are written under the notes. The piano accompaniment line is in grand staff notation and is currently empty.

Handwritten musical score system 3. The system consists of a vocal line and a piano accompaniment line. The vocal line is in treble clef with a key signature of one sharp (F#) and a 3/4 time signature. It begins with a half note, followed by a quarter note, and then a series of eighth notes. The lyrics "a" and "oo" are written under the first two notes, and "qw" and "pi" are written under the subsequent notes. The piano accompaniment line is in grand staff notation and is currently empty.

Handwritten musical score system 4. The system consists of a vocal line and a piano accompaniment line. The vocal line is in treble clef with a key signature of one sharp (F#) and a 2/4 time signature. It begins with a half note, followed by a quarter note, and then a series of eighth notes. The lyrics "o" and "(v)o" are written under the notes. The piano accompaniment line is in grand staff notation and is currently empty.



Handwritten musical notation on a grand staff. The treble clef staff contains a melodic line with a key signature of one sharp (F#) and a 2/4 time signature. The melody consists of eighth and sixteenth notes, with some rests. The lyrics "vo" and "oav" are written below the notes. The piano accompaniment is represented by empty staves.

Handwritten musical notation on a grand staff. The treble clef staff contains a melodic line with a key signature of one sharp (F#) and a 2/4 time signature. The melody consists of eighth and sixteenth notes, with some rests. The lyrics "A", "Sinn", "Ha - va", "ja", "va - wü" are written below the notes. The piano accompaniment is represented by empty staves.

Handwritten musical notation on a grand staff. The treble clef staff contains a melodic line with a key signature of one sharp (F#) and a 2/4 time signature. The melody consists of eighth and sixteenth notes, with some rests. The lyrics "pe - ra", "wäi", "e'lo xpi - slo", "ro - gr -" are written below the notes. The piano accompaniment is represented by empty staves.

Handwritten musical notation on a grand staff. The treble clef staff contains a melodic line with a key signature of one sharp (F#) and a 2/4 time signature. The melody consists of eighth and sixteenth notes, with some rests. The lyrics "ju", "A", "oav" are written below the notes. The piano accompaniment is represented by empty staves.

Handwritten musical notation in treble clef, 3/4 time signature, key of D major. The melody includes the lyrics: *γῆ-γῆ*, *τῆ*, *(v)ο* *σοῦ*, *τῆ*, *μου*. A triplet of eighth notes is marked with a '3' above it.

Handwritten musical notation in treble clef, 3/4 time signature, key of D major. The melody includes the lyrics: *Να*, *πῦρ* *ἐν* *τοῖς*, *κα-* *τα-* *ρα-* *σι-* *ται*.

Handwritten musical notation in treble clef, 3/4 time signature, key of D major. The melody consists of a few notes and rests. Two rectangular stamps are present: one on the left and one on the right, both containing the text "N. ΣΚΑΛΙΩΤΑΞ ΑΘΗΝΑΙ".

"Εὐλαοὺς ἱερουργεῖν :

Handwritten musical notation in treble clef, 3/4 time signature, key of D major. The melody consists of a few notes and rests. A rectangular stamp is present on the right containing the text "N. ΣΚΑΛΙΩΤΑΞ ΑΘΗΝΑΙ".

N. ΣΦΑΛΑΚΟΥΤΑΣ  
ΛΟΓΗΤΗΣ

