

#

177⁶

Πανταί μεν παρ' εὐσέλγου

τραγῶδι, λυγα μεν λυγαῖο

3374

Ν. ΣΤΑΜΒΟΥΛΟΣ
ΑΘΗΝΑΙ

The first system of the handwritten musical score consists of three staves. The top staff is a vocal line in treble clef with a 6/8 time signature. The middle and bottom staves are piano accompaniment in grand staff notation (treble and bass clefs). The music begins with a key signature of one flat (B-flat) and a 6/8 time signature. The piano part features a steady bass line with chords and some melodic movement in the right hand.

The second system of the handwritten musical score consists of three staves. It continues the vocal line and piano accompaniment from the first system. The piano part shows more complex chordal textures and some melodic lines in the right hand.

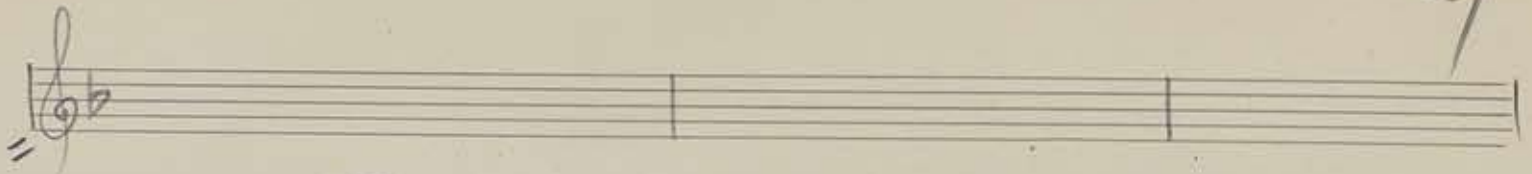
The third system of the handwritten musical score consists of three staves. It continues the vocal line and piano accompaniment. The piano part features a prominent bass line with sustained notes and chords.

The fourth system of the handwritten musical score consists of three staves. It continues the vocal line and piano accompaniment. The piano part includes a triplet of eighth notes in the right hand.

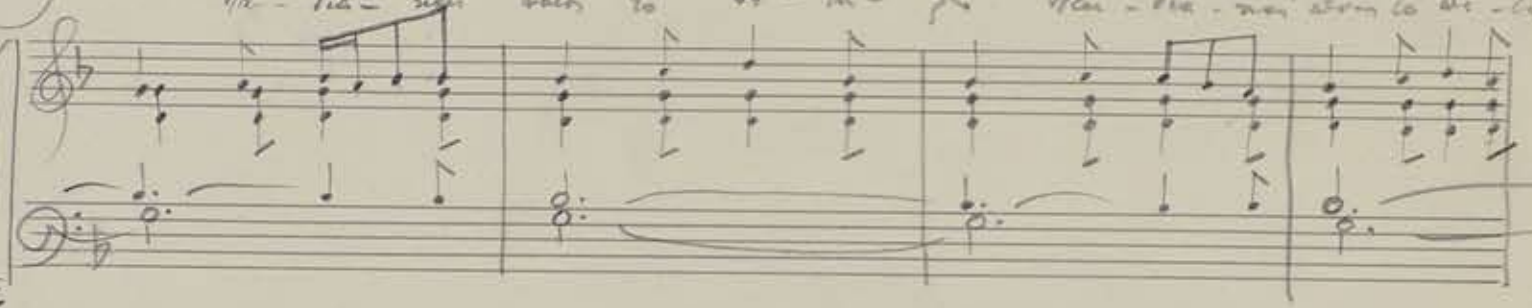
Four empty musical staves at the bottom of the page, consisting of two grand staves (treble and bass clefs).

137⁶ — . To Nagasvi . — Op. 3327

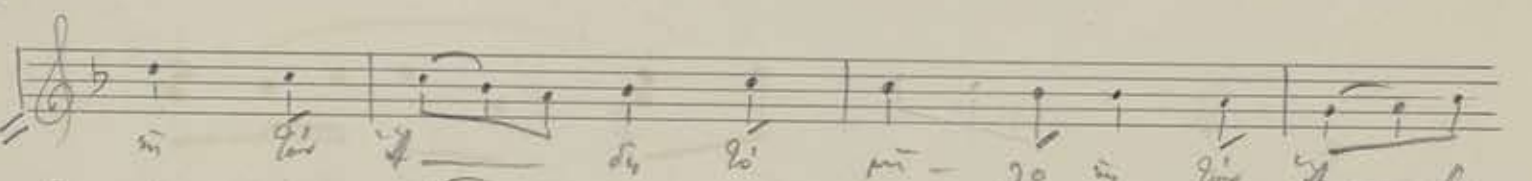
A handwritten musical score for a piece titled "To Nagasvi". The score is written on 12 staves, each with a treble clef and a key signature of one flat (B-flat). The time signature is 2/4. The music features a variety of rhythmic patterns, including eighth and sixteenth notes, often beamed together. There are several instances of triplets and slurs. The notation includes stems, beams, and note heads, with some notes having flags or beams. The overall style is that of a traditional handwritten manuscript.



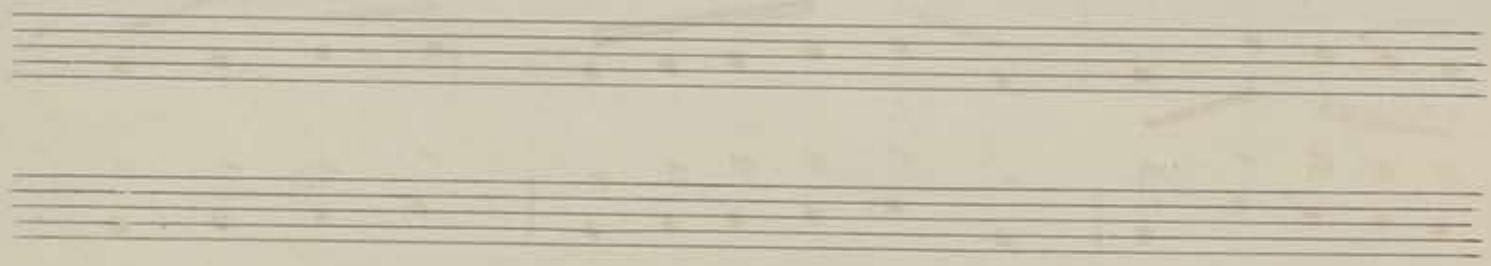
ta - na - nei san - to - si - pa - tris



mi - se - re - re - re - re



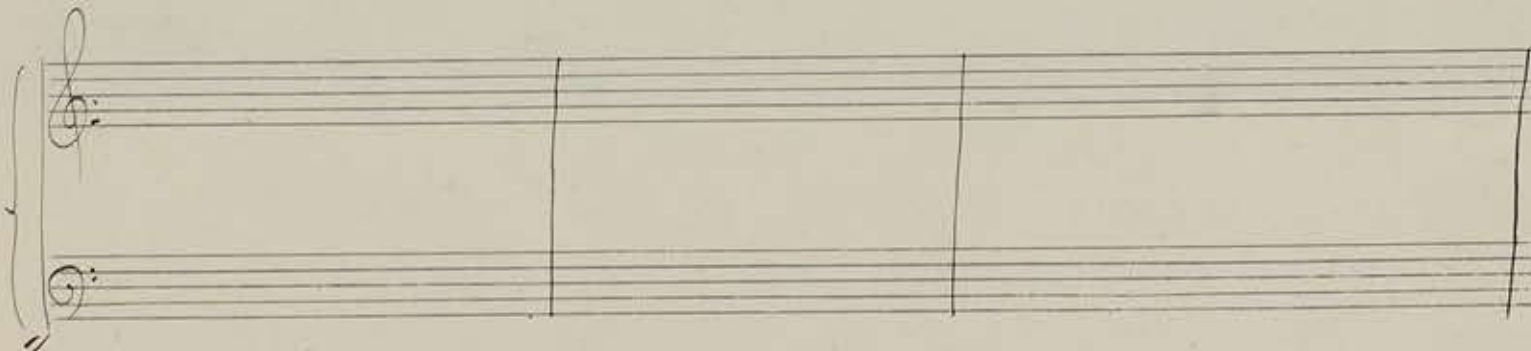
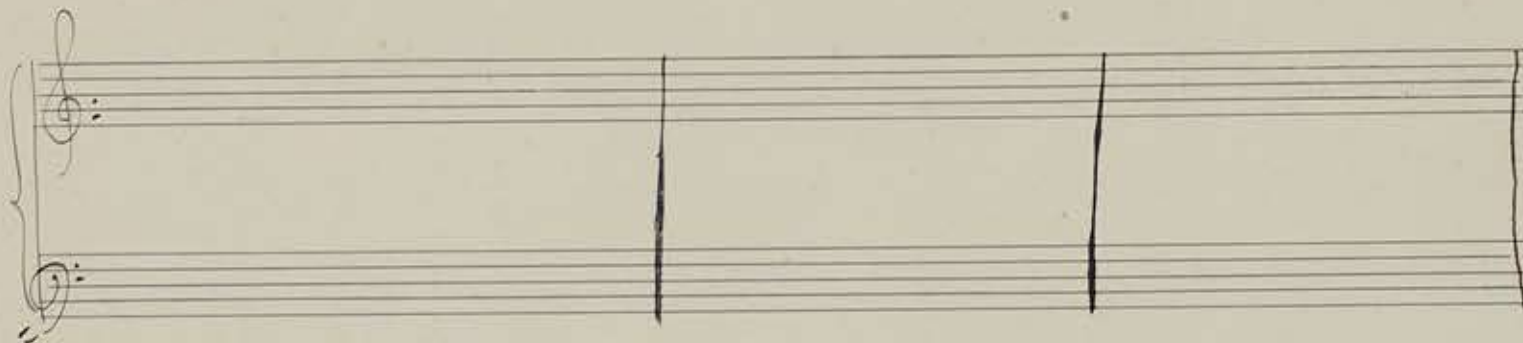
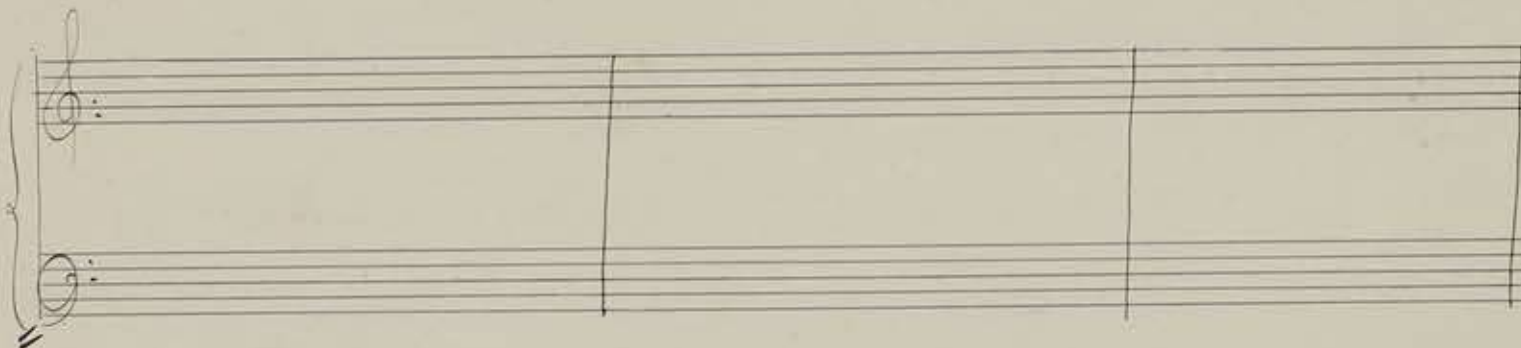
mi - se - re - re - re - re



Kai' 2i' xru-oi' mai' 2i' xrou - oi' mai' 2i' - xrou -

oi' - oia-di - 62i' yin, kai' 2i' xrou oi' kai'

2i' - xrou oi' - oia-di - 62i' yin.



Handwritten musical notation for the first system, including a treble clef, a key signature of one flat, and a piano accompaniment with chords and melodic lines.

Handwritten musical notation for the second system, featuring a vocal line with lyrics and piano accompaniment.

Handwritten musical notation for the third system, featuring a vocal line with lyrics and piano accompaniment.

A set of empty musical staves.

Handwritten musical notation for the fourth system, featuring a vocal line with lyrics and piano accompaniment.

A set of empty musical staves.

Handwritten musical score on aged paper, featuring a vocal line with Greek lyrics and a piano accompaniment. The score is written in treble clef and includes various time signatures such as 7/8, 3/8, 5/8, and 2/4. The lyrics are in Greek and appear to be a religious or liturgical text. The notation includes notes, rests, and bar lines, with some notes beamed together. The paper shows signs of age, including slight discoloration and wear at the edges.

Lyrics (Greek):

ἔ - ρε λὸν ὁπὸς ἔ - λη - ραι νῆν - γου - ρι - ζει οὐ
ἔ - μαν γο - ρω - μῆ - ρος νῆν - ρι - ζει
- Α - σὸ εὐ - γὴ - δὲ - μα - γο - φε παρ μὲ - ρα σου
- γοὶ - θα - νῆν βο - ρῆ - ναι μὲ - ρι - σπὶ - ραι

Εὐαγ- γελ- οἱ παῖ- ρα- ρι, Τρι- γωνοῦ ἀν- θρώ- πω- νος

The first system of the handwritten musical score consists of a vocal line on a single staff and a piano accompaniment on two staves. The vocal line begins with a treble clef and a key signature of one flat (B-flat). The lyrics are written below the notes. The piano accompaniment features a steady bass line in the left hand and chords in the right hand.

γωνοῦ ἀν- θρώ- πω- νος ἀν- θρώ- πω- νος ἀν- θρώ- πω- νος

The second system continues the musical piece with a vocal line and piano accompaniment. The lyrics are written below the notes. The piano accompaniment maintains a consistent harmonic and rhythmic structure.

ἀν- θρώ- πω- νος ἀν- θρώ- πω- νος ἀν- θρώ- πω- νος

The third system of the handwritten musical score features a vocal line and piano accompaniment. The lyrics are written below the notes. The piano accompaniment continues with its established pattern.

Two empty musical staves, one for the vocal line and one for the piano accompaniment, positioned between the third and fourth systems.

ἀν- θρώ- πω- νος

The fourth system of the handwritten musical score features a vocal line and piano accompaniment. The lyrics are written below the notes. The piano accompaniment concludes the piece with sustained chords.

Two empty musical staves at the bottom of the page, one for the vocal line and one for the piano accompaniment.

A. Voces solae.

Li mia re- ja ju e- jo- pi- a, re- va- ray-
 ja li mia la- xi- nu e- ou- ja
 do- no- sa- di. Et dev- you, si ju- la- lia,
 si- so- la- ma si do- or- pa
 nai lev- ge- pa- na- ga- ma- Mi- sa- la
 su- que- nu- ra- lau- de- que- ra, nai-
 bo- man- ra- ga- ga- ma- la- man- si- va
 Et ju- o- cu- po- or- pa, la- gap- la
 pa- ma, sai- no- no- me- ju- sa- ou-
 ra- sav- ga- ma- ta- ru- pia
 ju- fe- ra, sa- ru- pra- no- pu- us
 sar- na- ju- nay- tra- nu- pai- a- la- du- pre-
 -8- by- or- na- ora- o- ba- la- di- na- sus, ki-

Handwritten musical notation on a grand staff. The top staff is empty. The middle and bottom staves contain notes and rests. The key signature has one flat (B-flat). There are some handwritten annotations above the notes, possibly indicating dynamics or articulation.

Handwritten musical notation on a grand staff. The top staff is empty. The middle and bottom staves contain notes and rests. The key signature has one flat (B-flat). There are some handwritten annotations above the notes, possibly indicating dynamics or articulation.

Handwritten musical notation on a grand staff. The top staff is empty. The middle and bottom staves contain notes and rests. The key signature has one flat (B-flat). There are some handwritten annotations above the notes, possibly indicating dynamics or articulation.

Handwritten musical notation on a grand staff. The top staff is empty. The middle and bottom staves contain notes and rests. The key signature has one flat (B-flat). There are some handwritten annotations above the notes, possibly indicating dynamics or articulation.

Empty grand staff lines at the bottom of the page.

N. ΣΒΑΛΚΟΤΑΣ
ΑΘΗΝΑΙ

Handwritten musical score for the first system. It consists of a vocal line on a single staff and a piano accompaniment on two staves. The key signature has one flat (B-flat). The time signature starts with 3/8 and changes to 2/8. The piano part includes a *dim.* marking and a triplet of eighth notes. The vocal line begins with a melodic phrase.

Handwritten musical score for the second system. It continues the vocal and piano parts from the first system. The piano accompaniment features a triplet of eighth notes and a *dim.* marking. The vocal line continues with a similar melodic pattern.

Handwritten musical score for the third system, including Greek lyrics under the vocal line. The lyrics are: *χα-ρι-ς - μι - χα-ρι-ς ἀρ-χι-ε-πί-σκο-ποι ε-πί-σκο-ποι*. The piano accompaniment continues with a steady accompaniment.



Handwritten musical score for the fourth system, including Greek lyrics under the vocal line. The lyrics are: *κυ-ρι-α Τὸν ἀρ-χι-ε-πί-σκο-ποι ε-πί-σκο-ποι*. The piano accompaniment continues with a steady accompaniment.



Handwritten musical score for the first system. It consists of a vocal line in the upper staff and a piano accompaniment in the lower staff. The key signature has one flat (B-flat), and the time signature is common time (C). The piano part features a steady accompaniment with some melodic movement in the right hand.

Handwritten musical score for the second system. The vocal line includes the lyrics "Ter-ram a' ni Ter-ram a'". The piano accompaniment continues with similar rhythmic patterns.

Handwritten musical score for the third system. The vocal line includes the lyrics "ni Ter-ram a' ni qui se'". The piano accompaniment continues with similar rhythmic patterns.

Two empty musical staves, one for the vocal line and one for the piano accompaniment.

Handwritten musical score for the fourth system. The vocal line includes the lyrics "ni qui se' ni qui se'". The piano accompaniment continues with similar rhythmic patterns.

Two empty musical staves, one for the vocal line and one for the piano accompaniment.

Handwritten musical notation on a single staff, featuring a treble clef, a key signature of one sharp (F#), and a series of notes with various accidentals (sharps, naturals, flats) and stems.

Two empty musical staves, one for the treble clef and one for the bass clef, with a brace on the left side.

Handwritten musical notation on a single staff, featuring a treble clef, a key signature of one flat (Bb), and a series of notes with various accidentals and stems.

Two empty musical staves, one for the treble clef and one for the bass clef, with a brace on the left side.

Handwritten musical notation on a single staff, featuring a treble clef, a key signature of one flat (Bb), and a series of notes with various accidentals and stems.

Two empty musical staves, one for the treble clef and one for the bass clef, with a brace on the left side.

Handwritten musical notation on a single staff, featuring a treble clef, a key signature of one flat (Bb), and a series of notes with various accidentals and stems.

Two empty musical staves, one for the treble clef and one for the bass clef, with a brace on the left side.

Two empty musical staves, one for the treble clef and one for the bass clef, with a brace on the left side.

La' - vi mai vi - giu' La' - poi - La' - vi - Te' -

The first system of the handwritten musical score consists of two staves. The upper staff is a vocal line in G major, with lyrics 'La' - vi mai vi - giu' La' - poi - La' - vi - Te' -'. The lower staff is a piano accompaniment, with the right hand playing chords and the left hand playing a simple bass line.

xor mai La' La' - xor mai La' - La' - xor - mai

The second system of the handwritten musical score consists of two staves. The upper staff is a vocal line in G major, with lyrics 'xor mai La' La' - xor mai La' - La' - xor - mai'. The lower staff is a piano accompaniment, with the right hand playing chords and the left hand playing a simple bass line.

La' - pur - pe - san - dia - tor' - xor mai - La' La' -

The third system of the handwritten musical score consists of two staves. The upper staff is a vocal line in G major, with lyrics 'La' - pur - pe - san - dia - tor' - xor mai - La' La' -'. The lower staff is a piano accompaniment, with the right hand playing chords and the left hand playing a simple bass line.

xor - mai La' - pur - pe - san - dia -

The fourth system of the handwritten musical score consists of two staves. The upper staff is a vocal line in G major, with lyrics 'xor - mai La' - pur - pe - san - dia -'. The lower staff is a piano accompaniment, with the right hand playing chords and the left hand playing a simple bass line.

Handwritten musical notation on a single staff, featuring a sequence of notes with accidentals (sharps, flats, naturals) and plus signs. The notes are grouped in pairs. Above the staff, the word "Dim" is written three times, indicating a dynamic marking.

Empty musical staves for piano accompaniment, consisting of a grand staff with treble and bass clefs.

Handwritten musical notation on a single staff, continuing the sequence of notes with accidentals and plus signs. The word "Dim" is written above the first measure.

Empty musical staves for piano accompaniment, consisting of a grand staff with treble and bass clefs.

Handwritten musical notation on a single staff, continuing the sequence of notes with accidentals and plus signs.

Empty musical staves for piano accompaniment, consisting of a grand staff with treble and bass clefs.

Handwritten musical notation on a single staff, continuing the sequence of notes with accidentals and plus signs.

Empty musical staves for piano accompaniment, consisting of a grand staff with treble and bass clefs.