

A

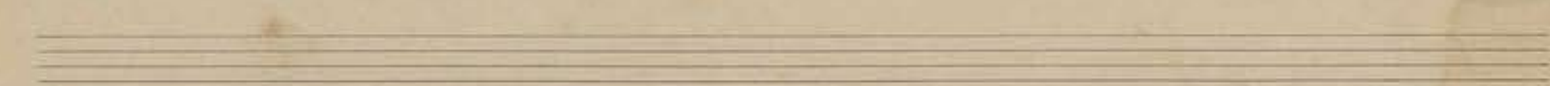
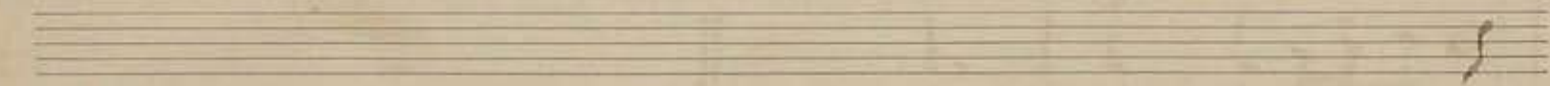
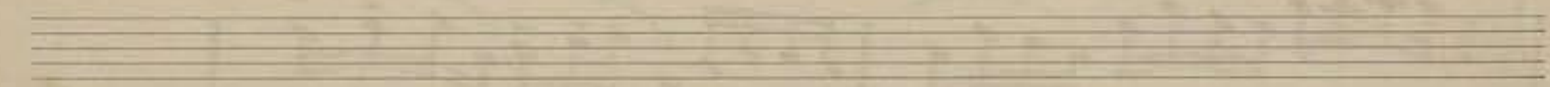
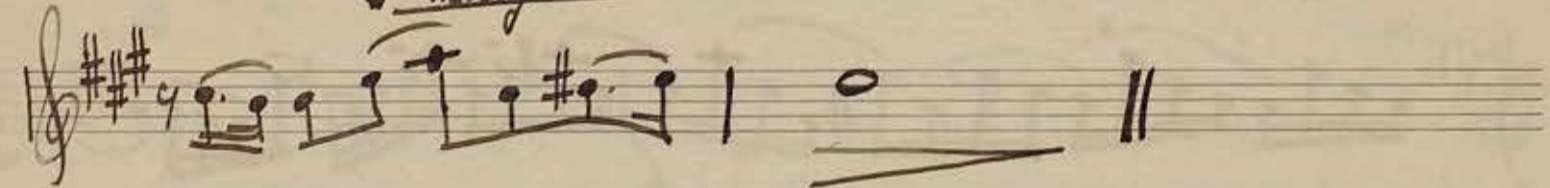
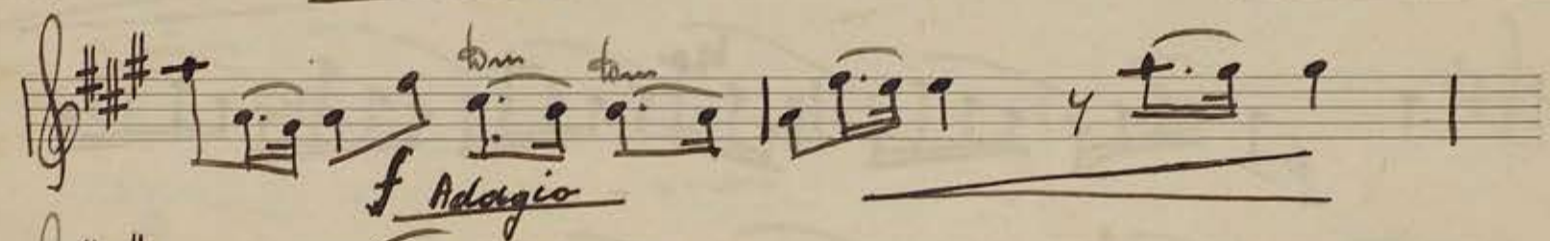
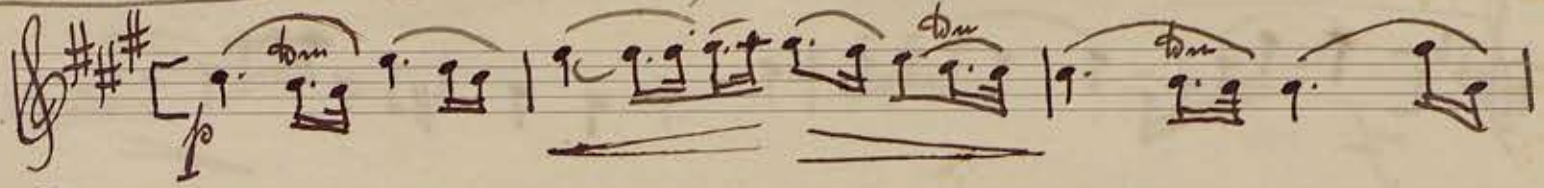
2 And' áðrygos Konstantín
(Oxyria)
(Amph) 1963

Andante

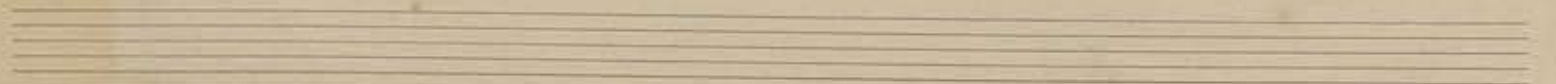
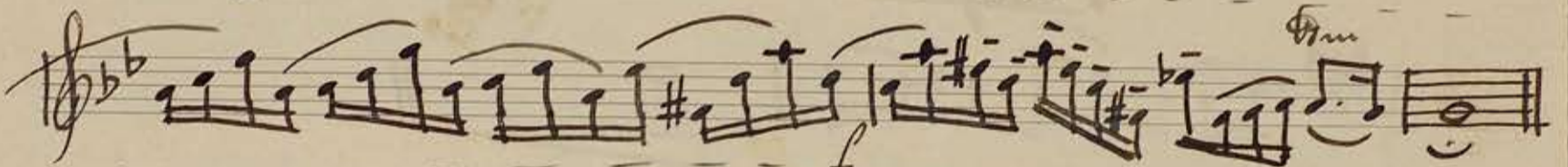
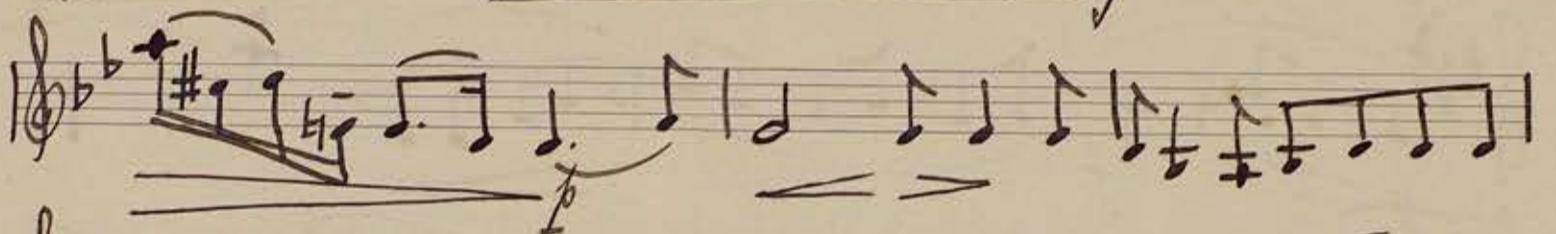
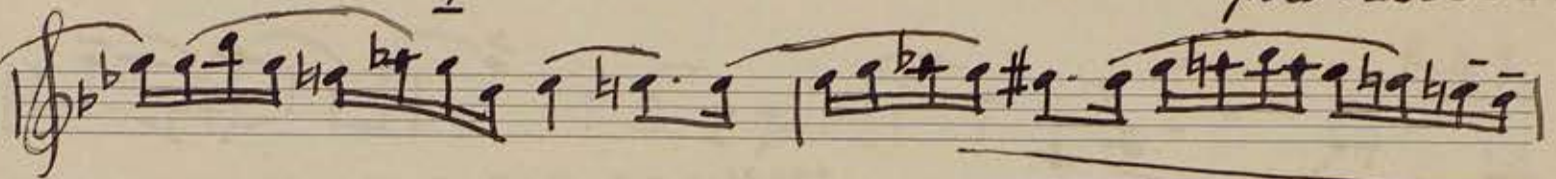
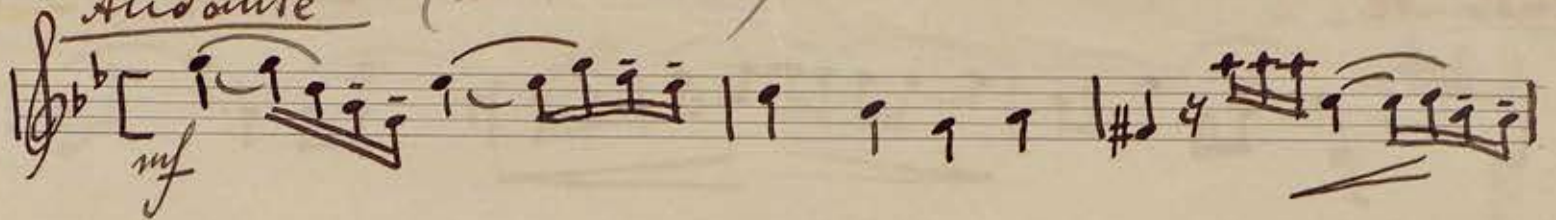
(1 Sonate) 1 Violino

C.F. Händel

Amstete



Andante (2. Sonata)



(3 Sonate)

Adagio

Handwritten musical notation on a single staff, starting with a treble clef, a key signature of two flats (B-flat and E-flat), and a 3/4 time signature. The notation includes a dynamic marking of *mf* and a *p* marking. The music consists of a series of notes, some beamed together, and rests.

Handwritten musical notation on a single staff, continuing the piece. It features a treble clef, a key signature of two flats, and a 3/4 time signature. The notation includes a *p* dynamic marking and a *mf* marking. The music consists of a series of notes, some beamed together, and rests.

Handwritten musical notation on a single staff, continuing the piece. It features a treble clef, a key signature of two flats, and a 3/4 time signature. The notation includes a *p* dynamic marking and a *mf* marking. The music consists of a series of notes, some beamed together, and rests.

Handwritten musical notation on a single staff, continuing the piece. It features a treble clef, a key signature of two flats, and a 3/4 time signature. The notation includes a *crescendo* marking and a *mf* marking. The music consists of a series of notes, some beamed together, and rests.

Handwritten musical notation on a single staff, continuing the piece. It features a treble clef, a key signature of two flats, and a 3/4 time signature. The notation includes a *p* dynamic marking and a *mf* marking. The music consists of a series of notes, some beamed together, and rests.

Handwritten musical notation on a single staff, continuing the piece. It features a treble clef, a key signature of two flats, and a 3/4 time signature. The notation includes a *p* dynamic marking and a *mf* marking. The music consists of a series of notes, some beamed together, and rests.

Handwritten musical notation on a single staff, continuing the piece. It features a treble clef, a key signature of two flats, and a 3/4 time signature. The notation includes a *p* dynamic marking and a *mf* marking. The music consists of a series of notes, some beamed together, and rests.

Handwritten musical notation on a single staff, continuing the piece. It features a treble clef, a key signature of two flats, and a 3/4 time signature. The notation includes a *crescendo* marking and a *mf* marking. The music consists of a series of notes, some beamed together, and rests.

Handwritten musical notation on a single staff, continuing the piece. It features a treble clef, a key signature of two flats, and a 3/4 time signature. The notation includes a *f* dynamic marking and a *mf* marking. The music consists of a series of notes, some beamed together, and rests.

Handwritten musical notation on a single staff, continuing the piece. It features a treble clef, a key signature of two flats, and a 3/4 time signature. The notation includes a *pp* dynamic marking and a *mf* marking. The music consists of a series of notes, some beamed together, and rests.

Handwritten musical notation on a single staff, continuing the piece. It features a treble clef, a key signature of two flats, and a 3/4 time signature. The notation includes a *crescendo* marking and a *mf* marking. The music consists of a series of notes, some beamed together, and rests.

Handwritten musical notation on a single staff, continuing the piece. It features a treble clef, a key signature of two flats, and a 3/4 time signature. The notation includes a *f* dynamic marking and a *mf* marking. The music consists of a series of notes, some beamed together, and rests.

(3 Sonate)

Largo

(Weihnachts-lied,
Helle-Nacht.)

3 mal . 1 mal con sordino, 2 mal con sord. pizzicato, 3 mal senza sordino et fortissimo .

Andante (1 Sonata) 2 Violino G.F. Händel

Handwritten musical score for two violins, G.F. Händel, Andante. The score consists of seven staves of music in treble clef with a key signature of three sharps (F#, C#, G#). The first staff begins with a piano (*p*) dynamic. The second staff has a *dim* marking. The third staff has a *cresc.* marking. The fourth staff has *mf* and *p* markings. The fifth staff has a *f* marking. The sixth staff has a *dim* marking. The seventh staff ends with an *Adagio* marking and a double bar line. There are also several empty staves at the bottom of the page.

Andante (2 Sonate)

Adagio (3 Sonate)

Handwritten musical notation on a single staff, featuring a melodic line with a dynamic marking of *f* (forte) and a fermata at the end.

Handwritten musical notation on a single staff, featuring a melodic line with a dynamic marking of *f* (forte) and a fermata at the end.

Handwritten musical notation on a single staff, featuring a melodic line with a dynamic marking of *f* (forte) and a fermata at the end.

Handwritten musical notation on a single staff, featuring a melodic line with a dynamic marking of *crescendo* and a fermata at the end.

Handwritten musical notation on a single staff, featuring a melodic line with a dynamic marking of *f* (forte) and a fermata at the end.

Handwritten musical notation on a single staff, featuring a melodic line with a dynamic marking of *crescendo* and a fermata at the end.

Handwritten musical notation on a single staff, featuring a melodic line with a dynamic marking of *f* (forte) and a fermata at the end.

Handwritten musical notation on a single staff, featuring a melodic line with a dynamic marking of *f* (forte) and a fermata at the end.

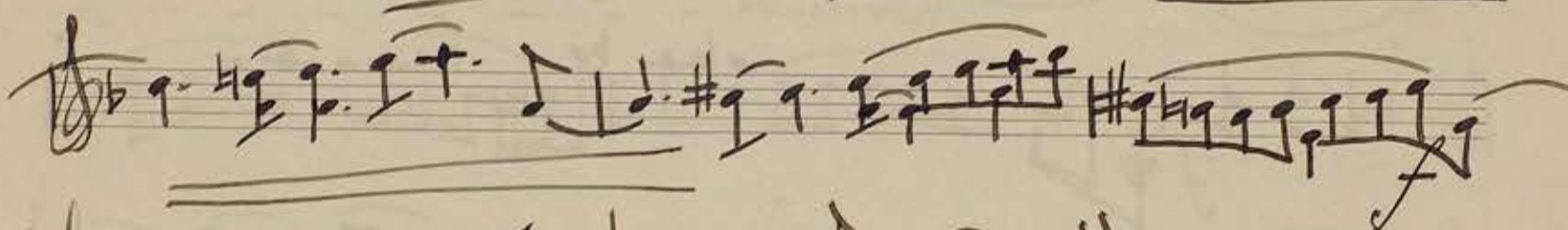
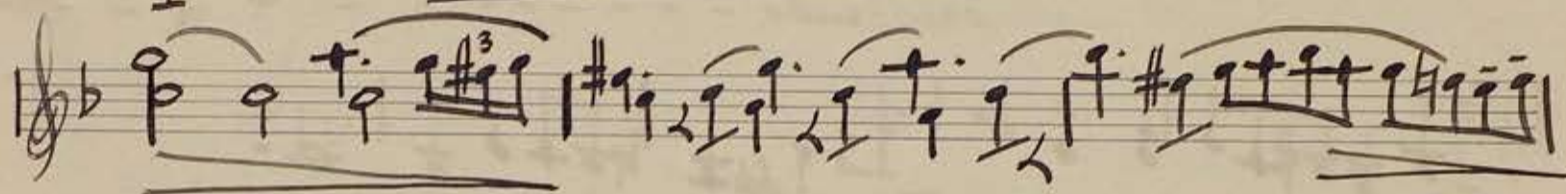
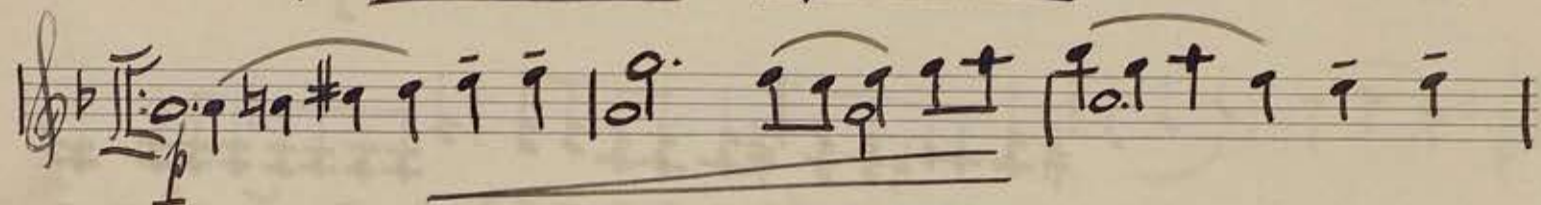
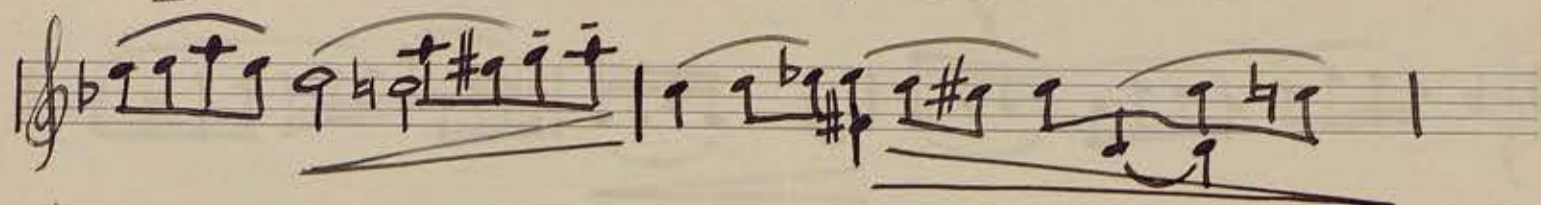
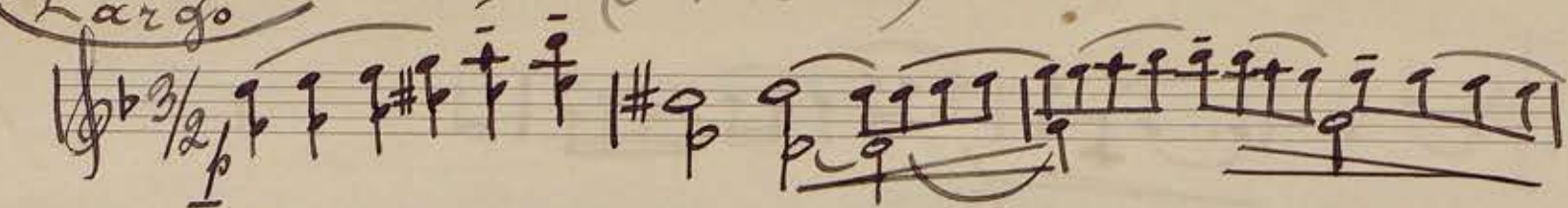
Handwritten musical notation on a single staff, featuring a melodic line with a dynamic marking of *riten.* (ritardando) and a fermata at the end.

Empty musical staff.

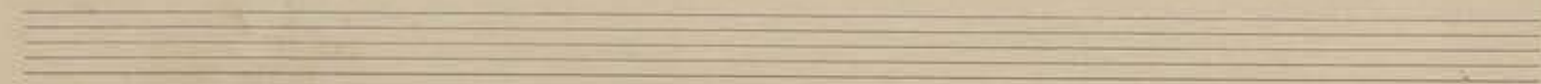
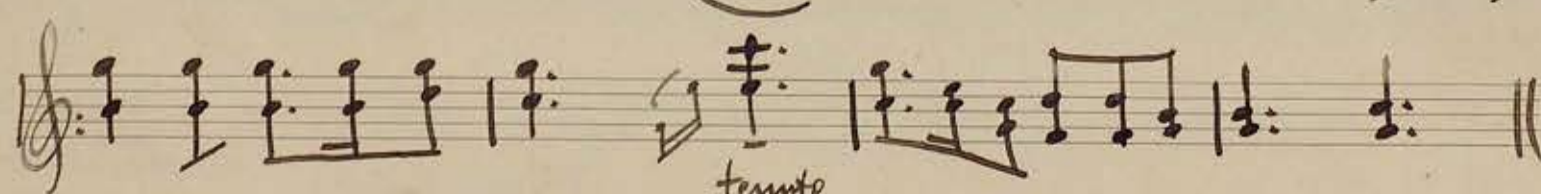
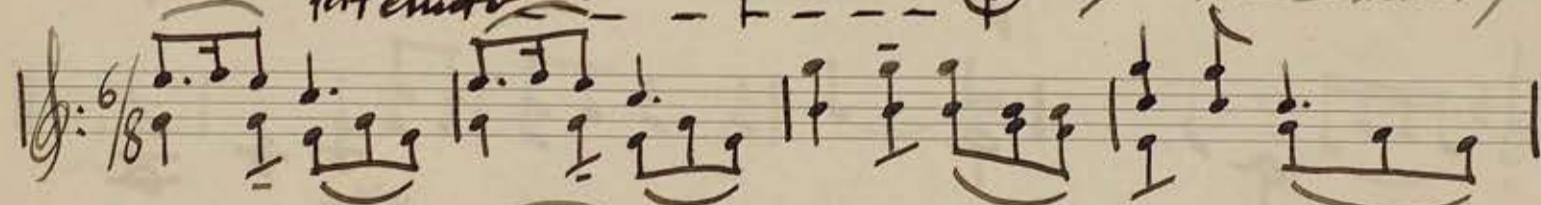
Empty musical staff.

Empty musical staff.

Largo (3 Sonate)



(Weihnachts-Lied
Hille-Weist)



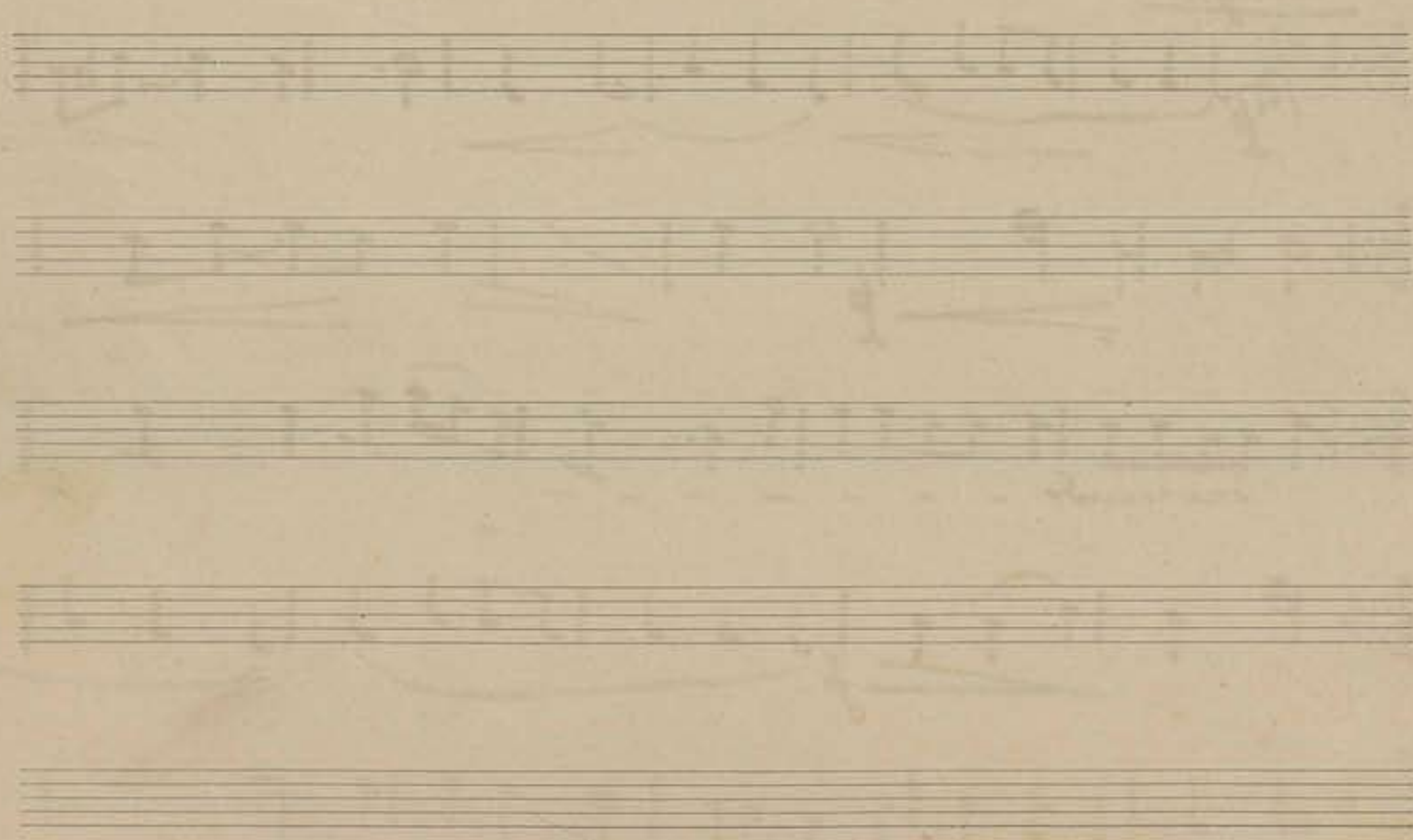
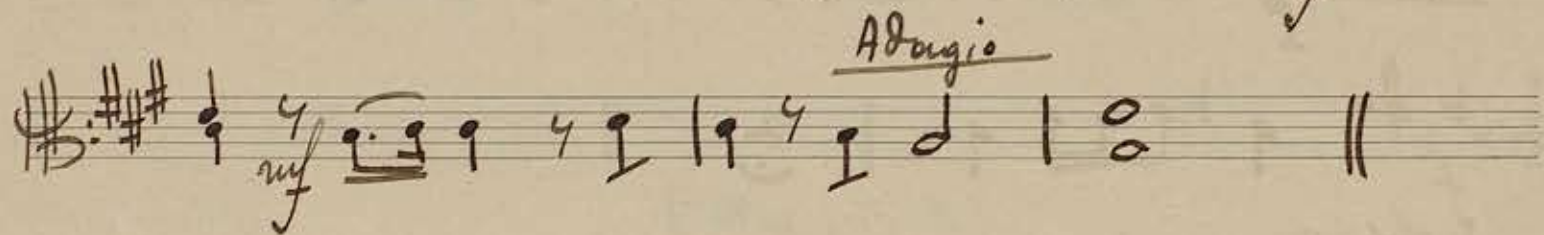
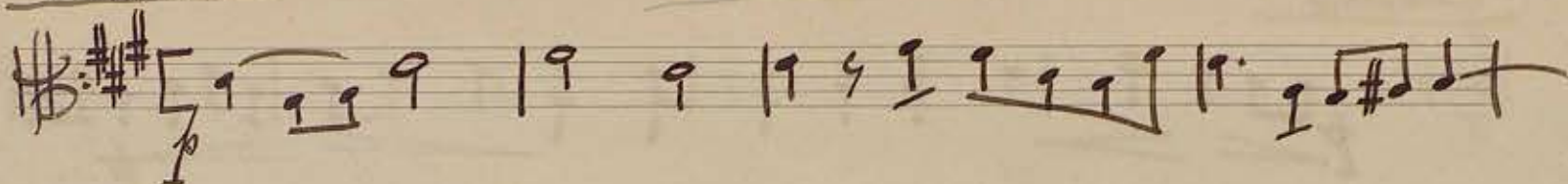
32

Andante

(1 Sonata)

Viola

G. F. Händel



(2 Sonate)

Andante

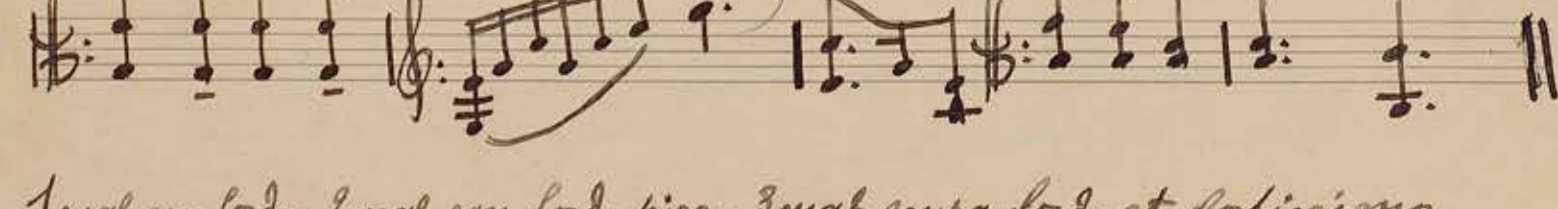
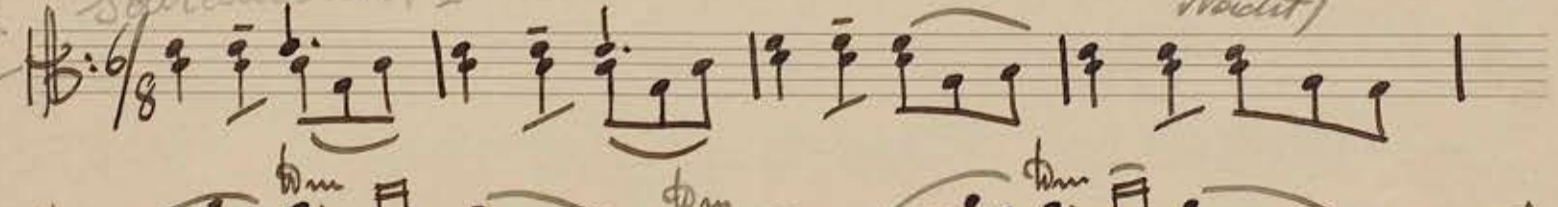
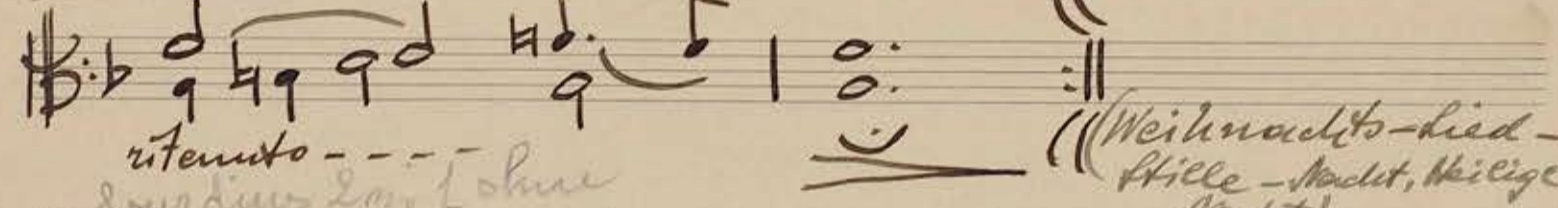
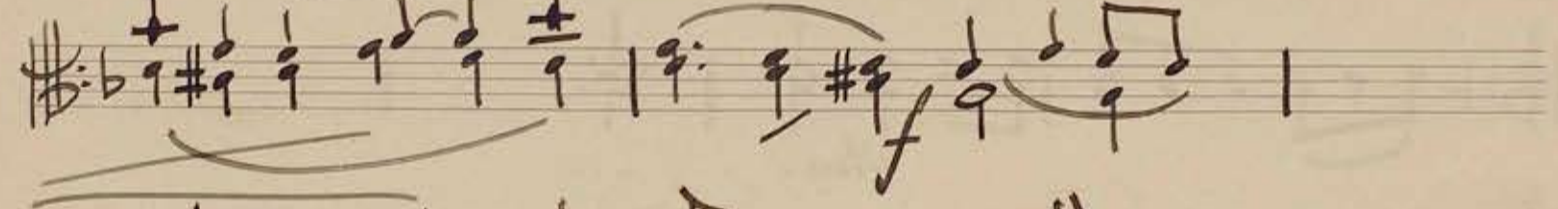
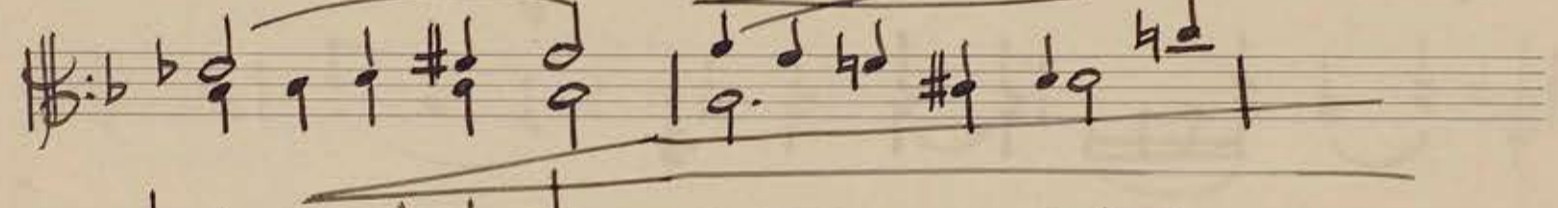
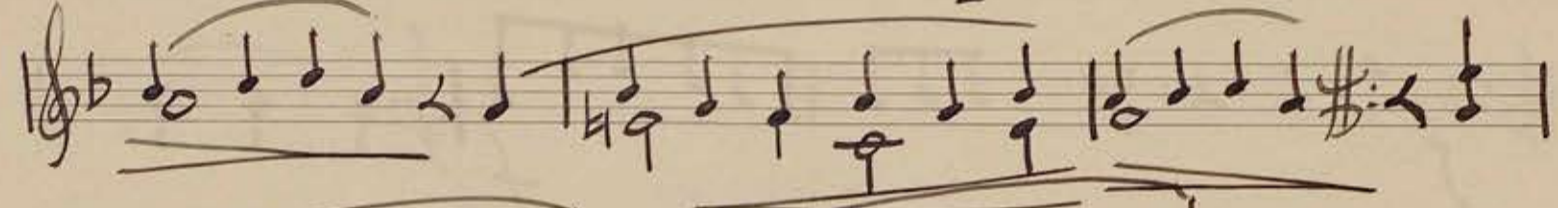
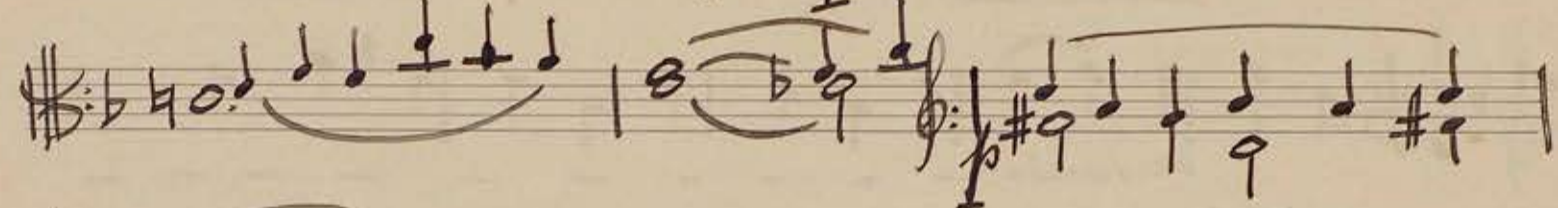
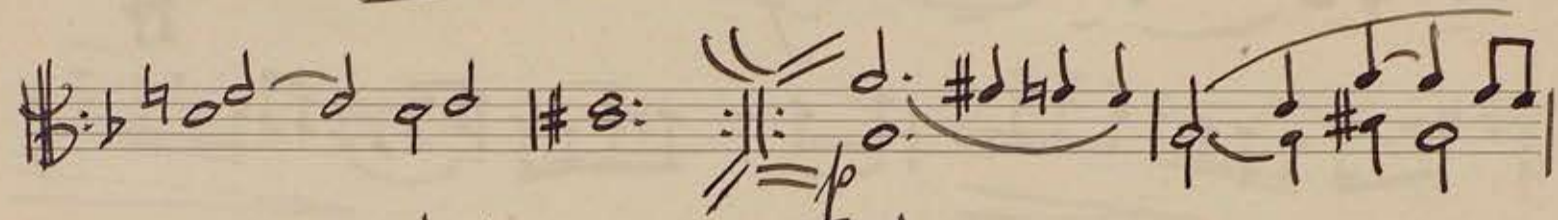
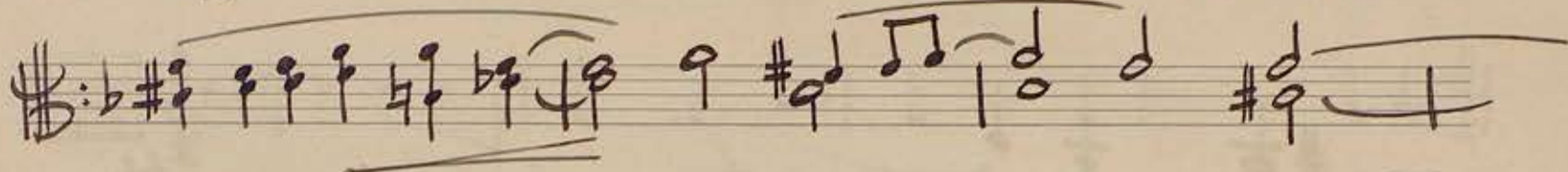
Handwritten musical score for the first section, "Andante". The score consists of seven staves of music in B-flat major. The notation includes various note values, rests, and dynamic markings such as "p" and "mf". A "crescendo" marking is present in the sixth staff.

Adagio

(3 Sonate)

Handwritten musical score for the second section, "Adagio". The score consists of five staves of music in B-flat major. The notation includes various note values, rests, and dynamic markings such as "p" and "f". A "crescendo" marking is present in the third staff.

Largo (3 sonate)



1mal con bord., 2mal con bord. pizz., 3mal senza bord. et fortissimo

3x *Sordicus 2m, 1ohne*

((Weihnachts-lied-
Stille-Nacht, Heilige
Nacht))

Andante (1 Sonata) Cello G. F. Händel

Handwritten musical score for Cello, G.F. Händel, Andante. The score consists of 11 staves of music in D major (three sharps) and 4/4 time. The first staff begins with a piano (*p*) dynamic. The second staff has a fermata at the end. The third staff includes a *cresc.* marking. The fourth staff starts with *mf* and has a *p* marking later. The fifth staff has a *f* marking. The sixth staff has a fermata. The seventh staff has a fermata. The eighth staff has a fermata. The ninth staff has a fermata. The tenth staff has a fermata. The eleventh staff begins with *f Adagio* and ends with a double bar line. There are three empty staves at the bottom of the page.

Andante (2 Sonate)

Adagio (3 Sonate)

Handwritten musical notation on a single staff, featuring a treble clef, a key signature of one flat (B-flat), and a common time signature (C). The notation includes a series of eighth and sixteenth notes, some beamed together, and a dynamic marking of *f* (forte) at the end.

Handwritten musical notation on a single staff, featuring a treble clef, a key signature of one flat (B-flat), and a common time signature (C). The notation includes a series of eighth and sixteenth notes, some beamed together, and a dynamic marking of *f* (forte) at the end.

Handwritten musical notation on a single staff, featuring a treble clef, a key signature of one flat (B-flat), and a common time signature (C). The notation includes a series of eighth and sixteenth notes, some beamed together, and a dynamic marking of *p* (piano) followed by *cresc.* (crescendo).

Handwritten musical notation on a single staff, featuring a treble clef, a key signature of one flat (B-flat), and a common time signature (C). The notation includes a series of eighth and sixteenth notes, some beamed together, and a dynamic marking of *f* (forte) at the end.

Handwritten musical notation on a single staff, featuring a treble clef, a key signature of one flat (B-flat), and a common time signature (C). The notation includes a series of eighth and sixteenth notes, some beamed together, and a dynamic marking of *pp* (pianissimo) followed by *f* (forte).

Handwritten musical notation on a single staff, featuring a treble clef, a key signature of one flat (B-flat), and a common time signature (C). The notation includes a series of eighth and sixteenth notes, some beamed together, and a dynamic marking of *crescendo*.

Handwritten musical notation on a single staff, featuring a treble clef, a key signature of one flat (B-flat), and a common time signature (C). The notation includes a series of eighth and sixteenth notes, some beamed together, and a dynamic marking of *f* (forte).

Handwritten musical notation on a single staff, featuring a treble clef, a key signature of one flat (B-flat), and a common time signature (C). The notation includes a series of eighth and sixteenth notes, some beamed together, and a dynamic marking of *f* (forte).

Handwritten musical notation on a single staff, featuring a treble clef, a key signature of one flat (B-flat), and a common time signature (C). The notation includes a series of eighth and sixteenth notes, some beamed together, and a dynamic marking of *f* (forte).

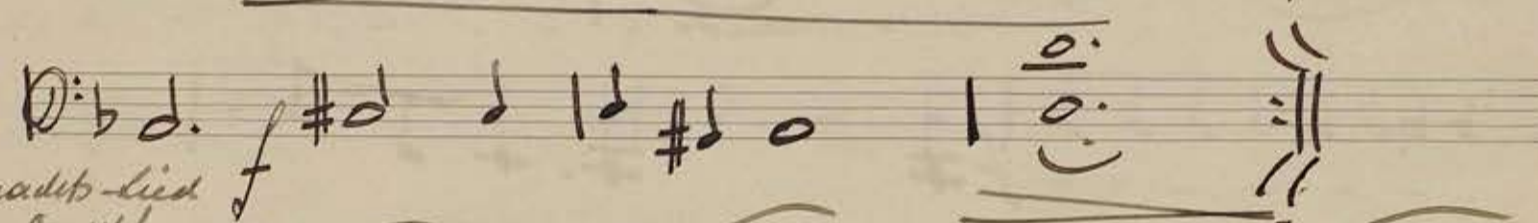
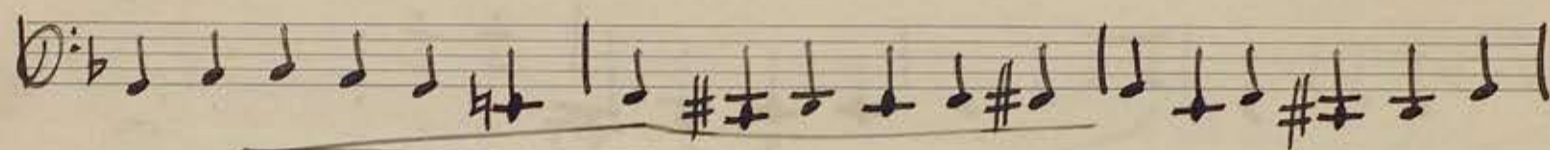
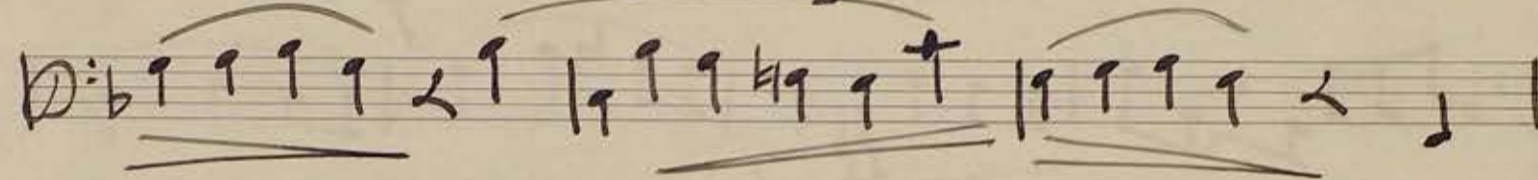
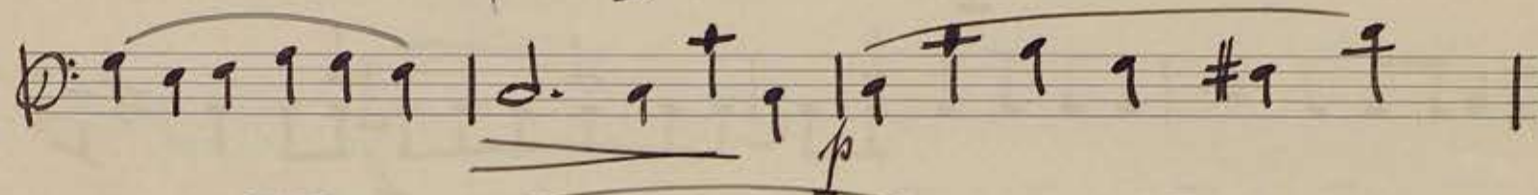
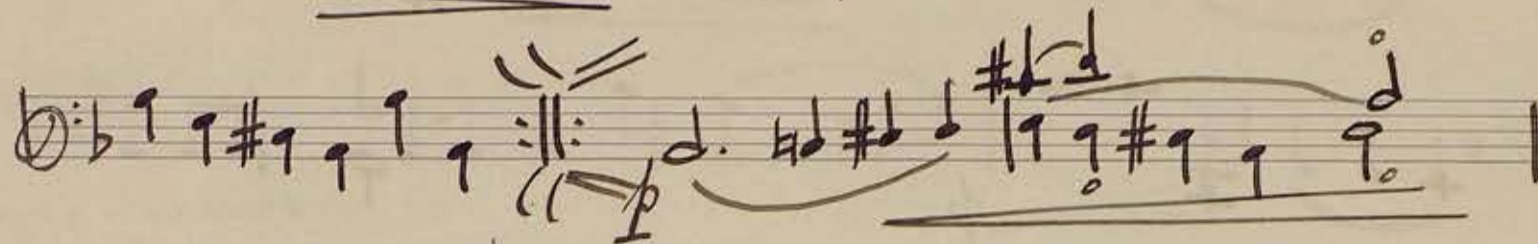
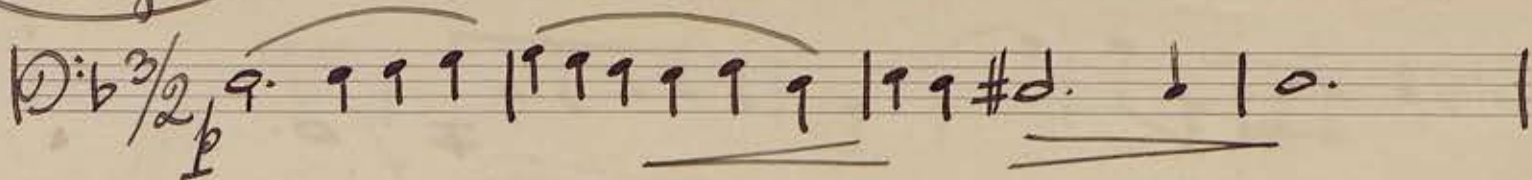
Handwritten musical notation on a single staff, featuring a treble clef, a key signature of one flat (B-flat), and a common time signature (C). The notation includes a series of eighth and sixteenth notes, some beamed together, and a dynamic marking of *f* (forte).

Handwritten musical notation on a single staff, featuring a treble clef, a key signature of one flat (B-flat), and a common time signature (C). The notation includes a series of eighth and sixteenth notes, some beamed together, and a dynamic marking of *riten.* (ritardando).

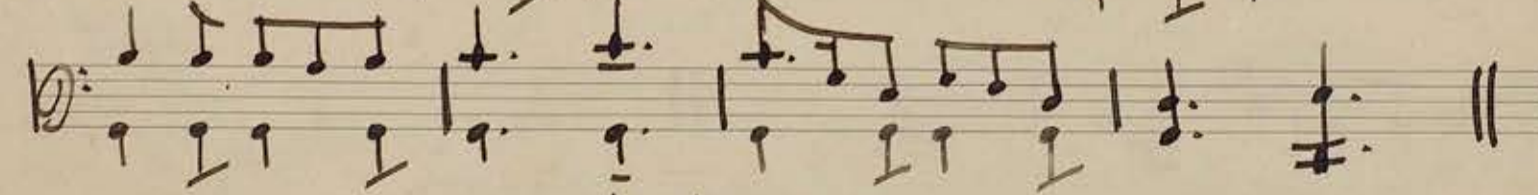
Two empty musical staves at the bottom of the page.

(3 Sonate)

Largo



(Weihnachts-lied
Hilce - Stult)



tenuto

1 mal con sordino, 2 mal con sordino p'zzo, 3 mal senza sordino et fortissimo.

