

79 B B₁

Beethoven's original manuscript
for the first time in the original manuscript
79 B and K = Kon. (Kopier) (3)

Handwritten musical score, first system. Treble and bass clefs, 6/4 time signature. *mf* dynamic marking. Includes slurs and accents.

Handwritten musical score, second system. Treble and bass clefs, 6/4 time signature. *mf* dynamic marking. Includes slurs and accents.

Handwritten musical score, third system. Treble and bass clefs, 6/4 time signature. *mf* dynamic marking. Includes slurs and accents. Time signature changes to 7/4 in the final measure.

Handwritten musical score, fourth system. Treble and bass clefs, 4/4 time signature. *f* dynamic marking. Includes slurs and accents.

Handwritten musical score, fifth system. Treble and bass clefs, 4/4 time signature. *f* dynamic marking. Includes slurs and accents.

Handwritten musical score on ten staves. The first staff contains complex chordal textures with dynamic markings *p* and *dim*. The second staff features a melodic line with slurs and ties. The third staff continues the melodic line with various articulations. The fourth staff shows a melodic line with ties and slurs. The fifth staff includes dynamic markings *dim* and *rit*. The sixth staff features a melodic line with a *Tempo I* marking. The seventh staff contains a melodic line with a dynamic marking *f*. The eighth staff is a bass line with rests. The ninth and tenth staves continue the melodic and bass lines respectively.

61

Handwritten musical notation for the first system. The top staff is in treble clef and the bottom staff is in bass clef. The music consists of eighth and sixteenth notes with various accidentals (flats and naturals). Dynamic markings include *mf* and *ff*. There are also slurs and accents over some notes.

Handwritten musical notation for the second system. The top staff is in treble clef and the bottom staff is in bass clef. The music features chords and moving lines. A dynamic marking of *mf* is present. There are accents and slurs throughout the system.

Handwritten musical notation for the third system. The top staff is in treble clef and the bottom staff is in bass clef. The music is characterized by long, sustained notes with slurs. A dynamic marking of *p* (piano) is visible at the beginning of the system.

Handwritten musical notation for the fourth system. The top staff is in treble clef and the bottom staff is in bass clef. The music shows a clear crescendo in the upper voice. A dynamic marking of *cresc...* is written between the staves. There are accents and slurs over the notes.

Handwritten musical notation for the fifth system. The top staff is in treble clef and the bottom staff is in bass clef. The music consists of chords and moving lines. A dynamic marking of *f* (forte) is present at the start of the system.

Handwritten musical notation for the first system. The top staff is in treble clef and the bottom staff is in bass clef. The key signature has two flats (B-flat and E-flat). The first measure has a dynamic marking of *f*. The second measure has a dynamic marking of *ff*. The notation includes chords and melodic lines with accents.

Handwritten musical notation for the second system. The top staff is in treble clef and the bottom staff is in bass clef. The key signature has two flats. The first measure has a dynamic marking of *fff*. The notation includes chords and melodic lines with accents.

Handwritten musical notation for the third system. The top staff is in treble clef and the bottom staff is in bass clef. The key signature has two flats. The notation includes chords and melodic lines with accents.

Handwritten musical notation for the fourth system. The top staff is in treble clef and the bottom staff is in bass clef. The key signature has two flats. The first measure has a dynamic marking of *p*. The notation includes chords and melodic lines with accents.

Handwritten musical notation for the fifth system. The top staff is in treble clef and the bottom staff is in bass clef. The key signature has two flats. The first measure has a dynamic marking of *cres*. The notation includes chords and melodic lines with accents.

Handwritten musical notation for the first system, consisting of two staves. The top staff has a treble clef and a key signature of one sharp (F#). The bottom staff has a treble clef. Dynamics include *pp* and *f*.

Handwritten musical notation for the second system, consisting of two staves. The top staff has a treble clef and a key signature of one flat (Bb). The bottom staff has a treble clef. Dynamics include *pp* and *dim*.

Handwritten musical notation for the third system, consisting of two staves. The top staff has a treble clef and a key signature of one flat (Bb). The bottom staff has a bass clef. Dynamics include *p* and *f*.

Handwritten musical notation for the fourth system, consisting of two staves. The top staff has a treble clef and a key signature of one flat (Bb). The bottom staff has a bass clef. Dynamics include *p* and *pp*.

Handwritten musical notation for the fifth system, consisting of two staves. The top staff has a treble clef and a key signature of one flat (Bb). The bottom staff has a bass clef. Dynamics include *pp*.

pp

f

stacc.

II

Molto Moderato

p

cresc...

mf

Handwritten musical notation for the first system, consisting of two staves. The top staff is in treble clef and the bottom staff is in bass clef. The time signature is 2/4. The music features complex melodic lines with many accidentals (flats and naturals) and dynamic markings. The key signature appears to be B-flat major or D-flat minor.

Handwritten musical notation for the second system, consisting of two staves. The top staff is in treble clef and the bottom staff is in bass clef. The time signature is 2/4. The music features complex melodic lines with many accidentals. Dynamic markings include *dim.* (diminuendo), *pp* (pianissimo), and *f* (forte). There is a double bar line with repeat dots and a fermata-like symbol.

Handwritten musical notation for the third system, consisting of two staves. The top staff is in treble clef and the bottom staff is in bass clef. The time signature is 2/4. The music features complex melodic lines with many accidentals. A dynamic marking of *f* (forte) is present. The bottom staff has some rhythmic markings like accents.

Handwritten musical notation for the fourth system, consisting of two staves. The top staff is in treble clef and the bottom staff is in bass clef. The time signature is 2/4. The music features complex melodic lines with many accidentals. Dynamic markings include *pp* (pianissimo) and *p* (piano).

Handwritten musical notation for the fifth system, consisting of two staves. The top staff is in treble clef and the bottom staff is in bass clef. The time signature is 2/4. The music features complex melodic lines with many accidentals. Dynamic markings include *cres.* (crescendo), *f* (forte), *p* (piano), and *pp* (pianissimo). There are also some fermatas and repeat symbols.

Handwritten musical score for strings, consisting of multiple staves. The score includes various dynamic markings and performance instructions:

- Staff 1: *p*
- Staff 2: *cresc. f stringendo*
- Staff 3: *f stringendo. cresc. ff stringendo*
- Staff 4: *sf*
- Staff 5: *Tempo I*
- Staff 6: *ff*, *p*, *sf*
- Staff 7: *cresc.*

The score features complex rhythmic patterns, including sixteenth and thirty-second notes, and rests. Time signatures include 3/4 and 2/4. The notation is in a key with two flats (B-flat and E-flat).

8

mf

dim *f*

mp

dim *pp*

p

cresc. f stringendo

ff rall. Tempo I p

mf stringendo sf

Tempo I

cresc. ff string. ff p

Ausdruck p

Handwritten musical score for a piano piece, consisting of six staves. The music is in 3/4 time and features complex chordal textures and melodic lines. The score includes dynamic markings such as *p*, *flügend*, and *pp ohne rallentando*. There are also tempo markings like *Allegro* and *Allegro* written vertically. The piece concludes with a tremolo effect.

III

Shimmy tempo (♩ = 92)

Handwritten musical score for a "Shimmy tempo" section, consisting of two staves. The music is in 4/4 time and features a rhythmic pattern of eighth notes with accents. The score starts with a dynamic marking of *f*.

8.

pp sf

mf quasi Fagotti

f und rhythmisch

25

Handwritten musical score system 1. It consists of two staves, Treble and Bass clef. The Treble staff begins with a treble clef, a key signature of one flat (B-flat), and a dynamic marking of *mf*. The Bass staff begins with a bass clef, a key signature of one flat, and a dynamic marking of *mf*. The system contains four measures. The first measure has a treble clef and a key signature of one flat. The second measure has a treble clef and a key signature of one flat. The third measure has a treble clef and a key signature of one flat. The fourth measure has a treble clef and a key signature of one flat. The time signature is 5/4.

Handwritten musical score system 2. It consists of two staves, Treble and Bass clef. The Treble staff begins with a treble clef, a key signature of one flat, and a dynamic marking of *p*. The Bass staff begins with a bass clef, a key signature of one flat, and a dynamic marking of *p*. The system contains four measures. The first measure has a treble clef and a key signature of one flat. The second measure has a treble clef and a key signature of one flat. The third measure has a treble clef and a key signature of one flat. The fourth measure has a treble clef and a key signature of one flat. The time signature is 5/4.

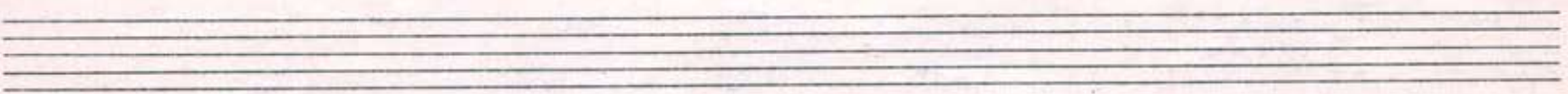
Handwritten musical score system 3. It consists of two staves, Treble and Bass clef. The Treble staff begins with a treble clef, a key signature of one flat, and a dynamic marking of *p*. The Bass staff begins with a bass clef, a key signature of one flat, and a dynamic marking of *p*. The system contains four measures. The first measure has a treble clef and a key signature of one flat. The second measure has a treble clef and a key signature of one flat. The third measure has a treble clef and a key signature of one flat. The fourth measure has a treble clef and a key signature of one flat. The time signature is 5/4.

Handwritten musical score system 4. It consists of two staves, Treble and Bass clef. The Treble staff begins with a treble clef, a key signature of one flat, and a dynamic marking of *p*. The Bass staff begins with a bass clef, a key signature of one flat, and a dynamic marking of *p*. The system contains four measures. The first measure has a treble clef and a key signature of one flat. The second measure has a treble clef and a key signature of one flat. The third measure has a treble clef and a key signature of one flat. The fourth measure has a treble clef and a key signature of one flat. The time signature is 5/4. A *cresc.* marking is present in the Treble staff.

Handwritten musical score system 5. It consists of two staves, Treble and Bass clef. The Treble staff begins with a treble clef, a key signature of one flat, and a dynamic marking of *f*. The Bass staff begins with a bass clef, a key signature of one flat, and a dynamic marking of *f*. The system contains four measures. The first measure has a treble clef and a key signature of one flat. The second measure has a treble clef and a key signature of one flat. The third measure has a treble clef and a key signature of one flat. The fourth measure has a treble clef and a key signature of one flat. The time signature is 5/4. A *cresc.* marking is present in the Treble staff.

40

Handwritten musical score for the first system. It consists of three staves. The top staff is in treble clef, the middle in treble clef, and the bottom in bass clef. The music is in 5/4 time. The first measure of the top staff has a circled '40' above it. The second measure of the middle staff has a dynamic marking 'ff'. The word 'ordinar' is written below the first measure of the middle staff. The system ends with a double bar line.



Handwritten musical score for the second system. It consists of three staves. The top staff is in treble clef, the middle in treble clef, and the bottom in bass clef. The music is in 5/4 time. The system ends with a double bar line.

8

Handwritten musical score for the first system. It consists of three staves: a treble staff, a piano staff, and a bass staff. The treble staff begins with a treble clef and a 5/4 time signature. The piano staff starts with a piano clef and a 5/4 time signature, marked with a forte dynamic *ff*. The bass staff also begins with a bass clef and a 5/4 time signature. The word *ausgelassen* is written in the middle of the system. The music includes various notes, rests, and dynamic markings.

Handwritten musical score for the second system, consisting of two staves: a treble staff and a bass staff. The treble staff features a long slur spanning across several measures. The bass staff contains rhythmic accompaniment. The system concludes with a double bar line.

Handwritten musical score for the third system, consisting of two staves: a treble staff and a bass staff. The treble staff begins with a forte dynamic marking *f*. The music continues with various notes and rests across both staves.

Two empty musical staves, one for the treble clef and one for the bass clef, positioned between the third and fourth systems.

Handwritten musical score for the fourth system, consisting of two staves: a treble staff and a bass staff. The treble staff begins with a *dim* (diminuendo) marking. The system concludes with a double bar line and a large handwritten 'V' symbol.

jämmerlich

70

immer leiser werden

Rhythmus und Humor
pp

p

mf

Handwritten musical notation for the first system. The top staff is in treble clef and the bottom staff is in bass clef. The music consists of several measures with notes, rests, and dynamic markings. A forte (*f*) dynamic marking is present in the second measure.

Handwritten musical notation for the second system. The top staff is in treble clef and the bottom staff is in bass clef. The music continues with various note values and rests.

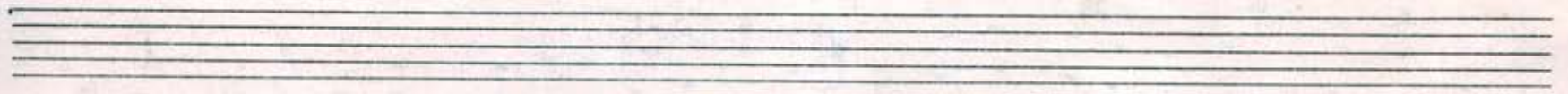
Handwritten musical notation for the third system. The top staff is in treble clef and the bottom staff is in bass clef. The music includes dynamic markings *ff* and *rapido*.

Handwritten musical notation for the fourth system. The top staff is in treble clef and the bottom staff is in bass clef. The music shows a series of chords and rests.

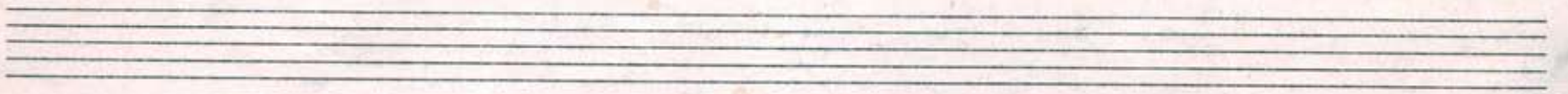
Handwritten musical notation for the fifth system. The top staff is in treble clef and the bottom staff is in bass clef. The music includes dynamic markings *Breit* and various note values.

Tempo I

Handwritten musical score for the first system. It consists of two staves: a treble clef staff on top and a bass clef staff on the bottom. The treble staff begins with a dynamic marking of *ff* and contains several measures of music with notes, rests, and slurs. The bass staff contains corresponding bass notes and rests. There are some handwritten annotations and a wavy line above the treble staff in the second measure.



Handwritten musical score for the second system. It consists of two staves: a treble clef staff on top and a bass clef staff on the bottom. The treble staff has a wavy line above it in the first measure, followed by notes and rests. The bass staff contains notes and rests, with some triplets indicated by a '3' over the notes. A dynamic marking of *ff* is present in the second measure of the treble staff.



Handwritten musical score for the third system. It consists of two staves: a treble clef staff on top and a bass clef staff on the bottom. The treble staff begins with a dynamic marking of *cresc* and contains several measures of music with notes, rests, and slurs. The bass staff contains corresponding bass notes and rests. There are some handwritten annotations and a wavy line above the treble staff in the second measure.

Handwritten musical score for the first system. It consists of two staves: a treble clef staff on top and a bass clef staff on the bottom. The music is written in a key with one sharp (F#) and one flat (Bb). The first measure shows a treble staff with a series of eighth notes and a bass staff with a whole note. The second measure continues with similar notation. The third measure features a treble staff with a complex chordal structure and a bass staff with a whole note. The fourth measure includes a treble staff with a glissando marking and a bass staff with a whole note. The system concludes with a treble staff showing a glissando and a bass staff with a whole note.

Handwritten musical score for the second system. It consists of two staves: a treble clef staff on top and a bass clef staff on the bottom. The music is written in a key with one sharp (F#) and one flat (Bb). The first measure shows a treble staff with a series of eighth notes and a bass staff with a whole note. The second measure features a treble staff with a complex chordal structure and a bass staff with a whole note. The third measure includes a treble staff with a complex chordal structure and a bass staff with a whole note. The fourth measure features a treble staff with a complex chordal structure and a bass staff with a whole note. The system concludes with a treble staff showing a complex chordal structure and a bass staff with a whole note.

Performance instructions in the second system include: "Breit" (written above the treble staff), "ordinär" (written below the treble staff), "ff" (written below the treble staff), and "Tempo mit voller Kraft" (written below the treble staff). The word "Bana" is written in a box below the bass staff.

Handwritten musical score for the third system. It consists of two staves: a treble clef staff on top and a bass clef staff on the bottom. The music is written in a key with one sharp (F#) and one flat (Bb). The first measure shows a treble staff with a complex chordal structure and a bass staff with a whole note. The second measure features a treble staff with a complex chordal structure and a bass staff with a whole note. The third measure includes a treble staff with a complex chordal structure and a bass staff with a whole note. The fourth measure features a treble staff with a complex chordal structure and a bass staff with a whole note. The system concludes with a treble staff showing a complex chordal structure and a bass staff with a whole note.

Handwritten musical score system 1, consisting of three staves. The top staff features a melodic line with a series of slurs and a five-finger fingering (5) indicated above a group of notes. The middle staff contains a more complex melodic line with slurs and a five-finger fingering (5) indicated above a group of notes. The bottom staff shows a bass line with slurs and a five-finger fingering (5) indicated above a group of notes. The system is marked with a dynamic of *fff* and includes a time signature change from 5/4 to 5/4.

Handwritten musical score system 2, consisting of three staves. The top staff features a melodic line with a series of slurs and a five-finger fingering (5) indicated above a group of notes. The middle staff contains a more complex melodic line with slurs and a five-finger fingering (5) indicated above a group of notes. The bottom staff shows a bass line with slurs and a five-finger fingering (5) indicated above a group of notes. The system is marked with a dynamic of *fff* and includes a time signature change from 5/4 to 5/4.

Handwritten musical score system 3, consisting of three staves. The top staff features a melodic line with a series of slurs and a five-finger fingering (5) indicated above a group of notes. The middle staff contains a more complex melodic line with slurs and a five-finger fingering (5) indicated above a group of notes. The bottom staff shows a bass line with slurs and a five-finger fingering (5) indicated above a group of notes. The system is marked with a dynamic of *fff* and includes a time signature change from 5/4 to 5/4. The word *rapido* is written in the middle of the system.

Handwritten musical score, first system. It consists of two staves. The upper staff begins with a treble clef, a key signature of two flats (B-flat and E-flat), and a dynamic marking of *fff*. The lower staff begins with a bass clef and a key signature of two flats. The system concludes with a measure containing a piano (*p*) dynamic marking and a *Ped.* (pedal) instruction. A dashed line with the number '8' above it spans the final two measures of the system.

Handwritten musical score, second system. It consists of two staves. The upper staff begins with a treble clef and a key signature of two flats. The lower staff begins with a bass clef and a key signature of two flats. The system includes a measure with a forte (*f*) dynamic marking and another measure with a piano (*p*) dynamic marking and the instruction *rhythmisch*. A dashed line with the number '8' above it spans the first two measures of the system.

Handwritten musical score, third system. It consists of two staves. The upper staff begins with a treble clef and a key signature of two flats. The lower staff begins with a bass clef and a key signature of two flats. This system contains several measures of music with various notes and rests.

Handwritten musical score, fourth system. It consists of two staves. The upper staff begins with a treble clef and a key signature of two flats. The lower staff begins with a bass clef and a key signature of two flats. This system contains several measures of music with various notes and rests.

Handwritten musical score, fifth system. It consists of two staves. The upper staff begins with a treble clef and a key signature of two flats. The lower staff begins with a bass clef and a key signature of two flats. This system contains several measures of music with various notes and rests.

Handwritten musical score for a piece in B-flat major. The score is written on four staves. The first two staves are in bass clef, and the last two are in treble clef. The music is in 4/4 time. The first staff begins with a piano (*p*) dynamic and features a melodic line with a slur and a fermata. The second staff provides a harmonic accompaniment with chords and a melodic line. The third staff contains a complex melodic passage with many notes and a forte (*f*) dynamic marking. The fourth staff continues the melodic and harmonic development. The score includes various musical notations such as slurs, fermatas, and dynamic markings.

Five sets of empty musical staves, each consisting of a pair of five-line staves, arranged vertically on the page.