

59,6 B

Ans 1. Naime  
1-5-63

Aggravicos Kapos - Apkaduol

pour Violon Solo et Piano

M. Luczak

*Εγχειρίδιο Χαρόδ - Αφροαιδύοις* Pour Violon Solo et Piano

*Piano Moderato*

59.6 B1

*A. Spyridakis* trio A. N. 1-3  
*4 gradus*

Handwritten musical notation on a single staff, featuring a treble clef, a key signature of one sharp (F#), and a common time signature (C). The notation includes a series of vertical strokes and some rhythmic markings.

Handwritten musical notation for a piano accompaniment, consisting of two staves (treble and bass clefs). The right hand features a complex texture of chords and arpeggios, while the left hand has a simpler rhythmic accompaniment.

Handwritten musical notation on a single staff, similar to the first system, with a treble clef and a key signature of one sharp.

Handwritten musical notation for a piano accompaniment, consisting of two staves. The right hand has a dense texture of chords, and the left hand provides a rhythmic base.

Handwritten musical notation on a single staff, featuring a treble clef and a key signature of one sharp.

Handwritten musical notation for a piano accompaniment, consisting of two staves. The right hand has a complex texture of chords, and the left hand has a rhythmic accompaniment.

*Tempo I*

Handwritten musical notation on a single staff, featuring a treble clef, a key signature of one sharp, and a common time signature. It includes a *rit.* marking and a *p* dynamic marking.

Handwritten musical notation for a piano accompaniment, consisting of two staves. The right hand has a complex texture of chords, and the left hand has a rhythmic accompaniment.

Handwritten musical notation, first system. Treble clef, 3/4 time signature, key signature of one sharp (F#). The notation includes a series of eighth notes followed by a half note, with a dynamic marking of *mf* and a Roman numeral *II* above the staff.

Handwritten musical notation, second system. Treble and bass clefs, 3/4 time signature, key signature of one sharp. The notation includes chords and single notes, with a dynamic marking of *mf*.

Handwritten musical notation, third system. Treble clef, 3/4 time signature, key signature of one sharp. The notation includes a series of eighth notes followed by a half note, with a dynamic marking of *mf*.

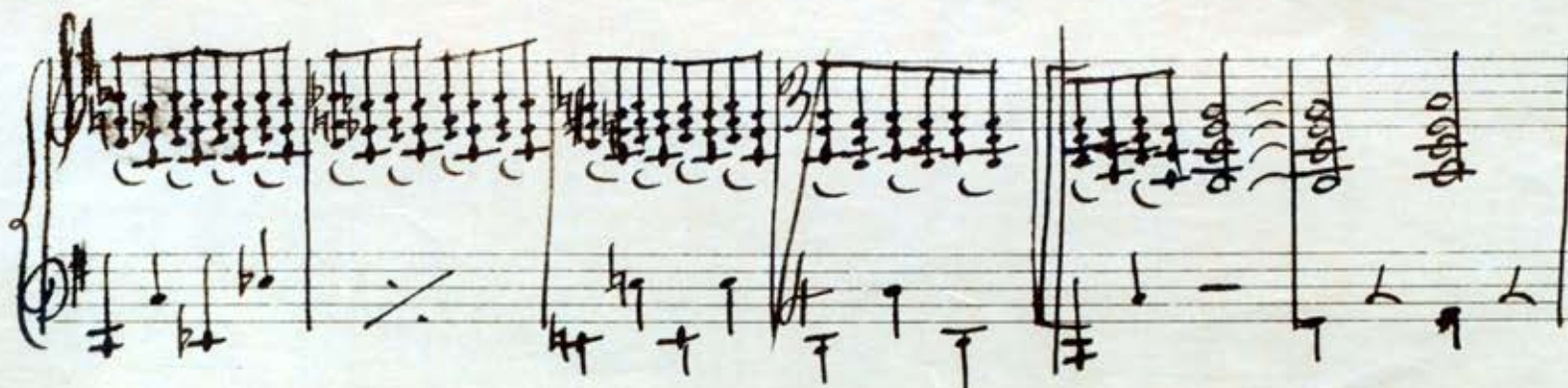
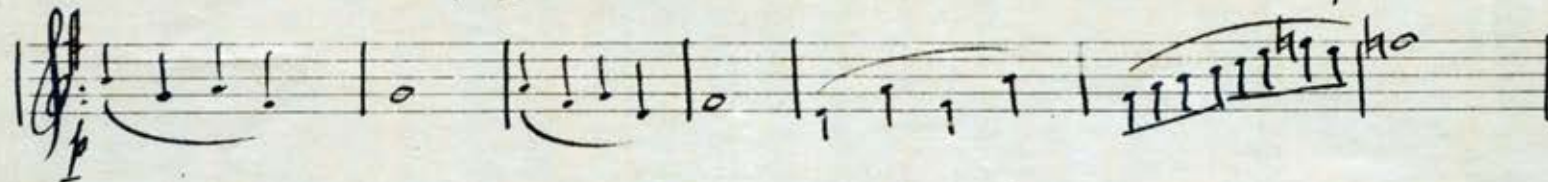
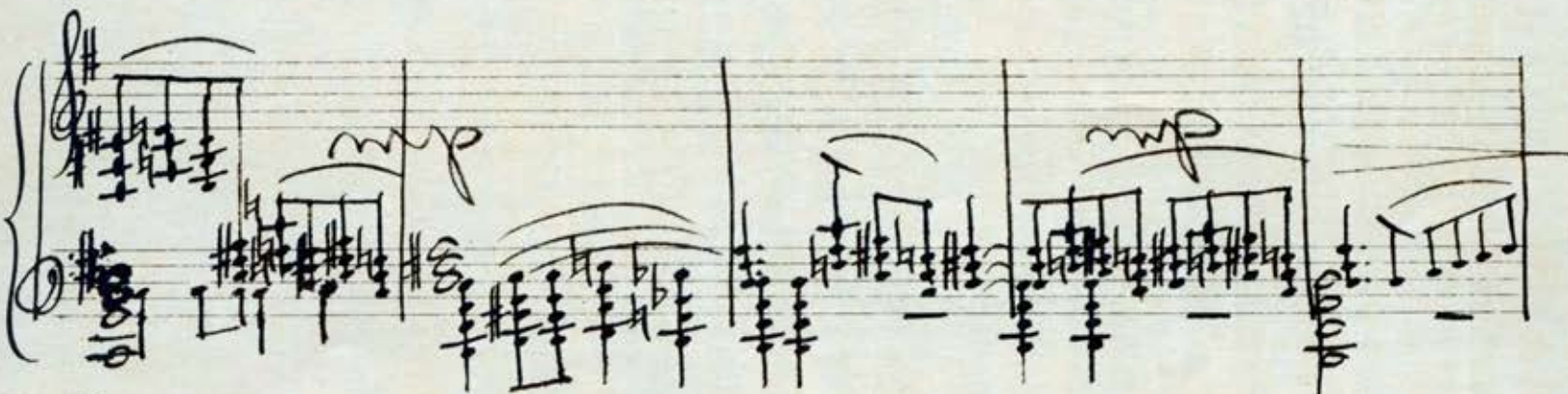
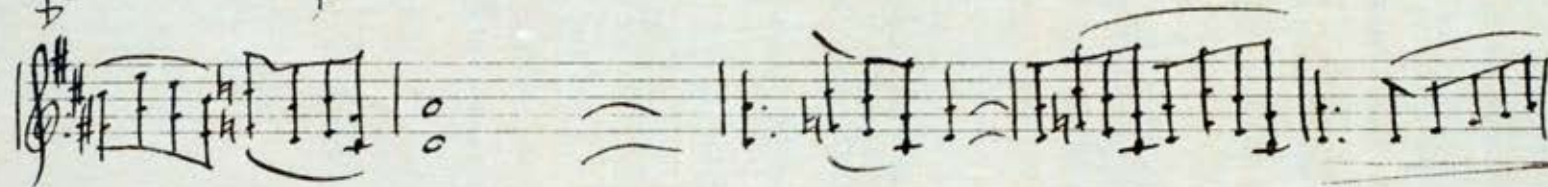
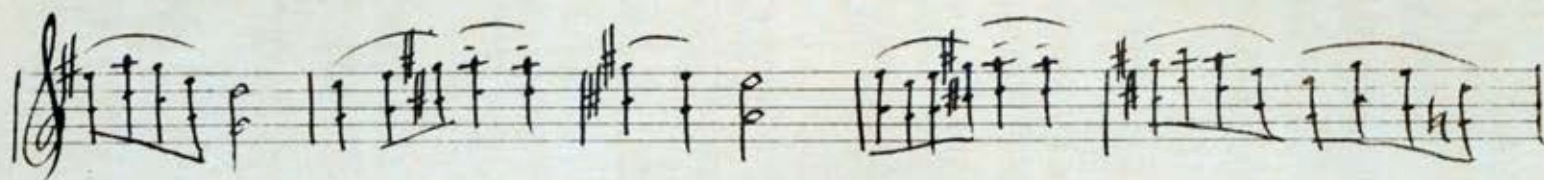
Handwritten musical notation, fourth system. Treble and bass clefs, 3/4 time signature, key signature of one sharp. The notation includes chords and single notes, with a dynamic marking of *mf*.

Handwritten musical notation, fifth system. Treble clef, 3/4 time signature, key signature of one sharp. The notation includes a series of eighth notes followed by a half note, with a dynamic marking of *mf*.

Handwritten musical notation, sixth system. Treble and bass clefs, 3/4 time signature, key signature of one sharp. The notation includes chords and single notes, with a dynamic marking of *mf* and a *cresc.* marking above the staff.

Handwritten musical notation, seventh system. Treble clef, 3/4 time signature, key signature of one sharp. The notation includes a series of eighth notes followed by a half note, with a dynamic marking of *f* and a *molto legato* marking below the staff.

Handwritten musical notation, eighth system. Treble and bass clefs, 3/4 time signature, key signature of one sharp. The notation includes chords and single notes, with a dynamic marking of *mf* and *Ped...* markings below the staff.



Handwritten musical notation on a single staff, featuring a treble clef and a key signature of one sharp (F#). The notation includes a series of sixteenth notes, followed by a measure with a fermata and the instruction "rit. ---".

Handwritten musical notation for a grand staff (treble and bass clefs). The right hand contains chords and melodic lines, while the left hand contains bass notes and chords. The key signature is one sharp (F#).

Handwritten musical notation on a single staff, featuring a treble clef and a key signature of one sharp (F#). It includes a 3/4 time signature and a fermata.

Handwritten musical notation for a grand staff. The right hand has chords and a 3/4 time signature. The left hand has bass notes and chords. The key signature is one sharp (F#).

Handwritten musical notation on a single staff, featuring a treble clef and a key signature of one sharp (F#). It includes a fermata and a dynamic marking of *p*.

Handwritten musical notation for a grand staff. The right hand contains chords and a dynamic marking of *p*. The left hand contains bass notes and chords.

Handwritten musical notation on a single staff, featuring a treble clef and a key signature of one sharp (F#). It includes a fermata and the instruction "dim. ---".

Handwritten musical notation for a grand staff. The right hand contains chords and a dynamic marking of *pp*. The left hand contains bass notes and chords. The key signature is one sharp (F#).

3/2

Paul Violon Solo et Piano

Violon - Solo

59.6 B2

N. Sargislian

Ελληνικός Χανός - Αρκαδισμός

Moderato

Handwritten musical notation on a single staff, starting with a treble clef, a key signature of one sharp (F#), and a 3/2 time signature. The music begins with a dynamic marking of *p* and includes various note values and rests.

Handwritten musical notation on a single staff, continuing the piece with various rhythmic patterns and rests.

Handwritten musical notation on a single staff, featuring a series of eighth notes and a change in dynamics.

Handwritten musical notation on a single staff, marked *Tempo* and *rit.* (ritardando). It includes a dynamic marking of *p* and a fermata over a note.

Handwritten musical notation on a single staff, featuring a 3/4 time signature and a dynamic marking of *mf* (mezzo-forte).

Handwritten musical notation on a single staff, including a section marked *rit.* and a dynamic marking of *f* (forte).

Handwritten musical notation on a single staff, featuring a key signature change to one flat (F) and a dynamic marking of *cresc.* (crescendo).

Handwritten musical notation on a single staff, including a key signature change to two sharps (F# and C#) and a dynamic marking of *f*.

Handwritten musical notation on a single staff, marked *molto legato* and featuring a series of eighth notes.

Handwritten musical notation on a single staff, continuing the melodic line with various note values.

Handwritten musical notation on a single staff, ending with a dynamic marking of *p* and a fermata over the final note.

Handwritten musical score for a piece in G major. The score consists of seven staves of music. The first staff is the melody, starting with a half note G4, followed by quarter notes A4, B4, and C5, then a sixteenth-note run. The second staff is the accompaniment, starting with a quarter note G4, followed by quarter notes A4, B4, and C5, then a 3/4 time signature change and a sixteenth-note run. The third staff continues the accompaniment with a sixteenth-note run. The fourth staff features a *rit.* marking and a *V* marking. The fifth staff continues the accompaniment with a 3/4 time signature change and a *dim.* marking. The sixth staff continues the accompaniment with a *V* marking. The seventh staff concludes the piece with a *dim.* marking and a *rit.* marking. The score includes various musical notations such as slurs, dynamics, and time signature changes.

Five empty musical staves, each consisting of five horizontal lines, arranged vertically on the page.