

Petite Suite pour Violon Solo et Piano

I partie

Allegro marcato (♩ = 92) *Tanz - Preludio*
Violon - Solo
Piano

5
10
15

cresc.

Handwritten musical notation and a circled note at the bottom of the page.

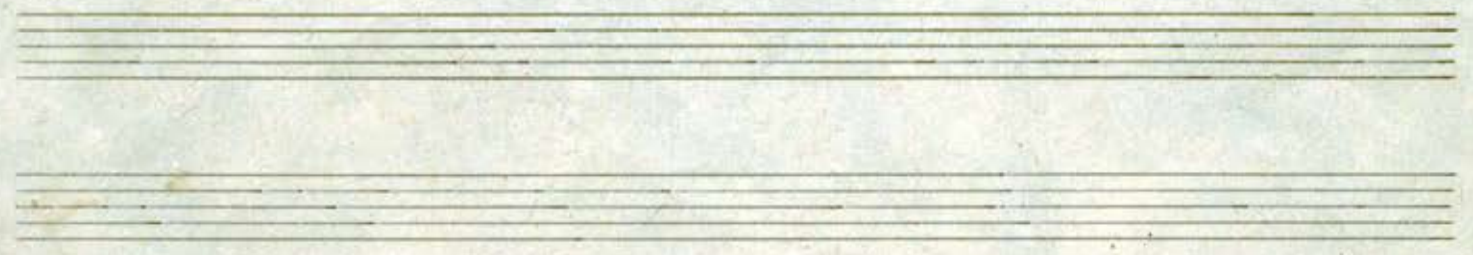
12 eideu

This image shows a page of handwritten musical notation on aged paper. The score is organized into several systems, each consisting of two staves. The notation includes treble and bass clefs, various note values (quarter, eighth, and sixteenth notes), rests, and bar lines. The music is written in a style characteristic of 19th-century manuscript notation. Measure numbers 25, 30, 35, and 40 are clearly marked. The paper shows signs of age, including some staining and discoloration.

This page contains a handwritten musical score for guitar, consisting of six systems of staves. The notation is dense and includes various musical symbols such as notes, rests, accidentals, and dynamic markings. Fingerings are indicated by numbers 1-5. The score includes several systems of chords and melodic lines. Key features include:

- System 1:** Starts with a treble clef and a key signature of one sharp (F#). It features a complex chordal texture with many accidentals. Fingerings like 3, 4, 5, and 4, 5 are noted. A circled '2' appears in the bass line.
- System 2:** Continues the complex texture. A circled '5' is present in the bass line. The notation is highly detailed with many accidentals.
- System 3:** Shows a transition in the bass line with triplets and other rhythmic patterns. A circled '55' is visible.
- System 4:** Features a prominent melodic line in the treble clef with triplets and slurs. The bass line continues with complex chords. A circled '35' is present.
- System 5:** The treble clef part shows a series of sixteenth-note patterns. The bass line has a circled '60'.
- System 6:** The final system shows a series of chords with slurs and triplets in the bass line. A circled '32' is present.

The notation is highly detailed, with many accidentals and complex chord structures. The handwriting is in blue ink on aged paper.



This page contains a handwritten musical score consisting of several systems of staves. The notation includes treble and bass clefs, various note values, rests, and dynamic markings. Key annotations include:

- 65**: A large number marking a section of the score.
- 70**: A number marking another section.
- 75** and **80**: Numbers marking further sections.
- 85**: A number marking a section towards the bottom of the page.
- copp.*: An annotation above the first system.
- qu.*: An annotation above the second system.
- nuovo spr.*: An annotation above the third system.
- cantabile*: An annotation above the fourth system.
- un poco agitato*: An annotation above the fifth system.

The score is densely written with many notes and rests, and includes various musical symbols such as accidentals, slurs, and dynamic markings like *ff* and *fp*. The handwriting is in blue ink on aged paper.



Handwritten musical score for piano, measures 90-110. The score is written in blue ink on aged paper. It consists of two staves per system, with a treble clef on the upper staff and a bass clef on the lower staff. The key signature is one sharp (F#), and the time signature is 4/4. The score includes various musical notations such as notes, rests, accidentals, and dynamic markings. Measure numbers 90, 95, 100, 105, and 110 are clearly marked. There are several triplets and slurs throughout the piece. A handwritten note in the right margin reads "loop cell mib, do".

90

95

100

105

110

loop cell mib, do

Four empty musical staves at the bottom of the page, consisting of two treble clefs and two bass clefs.

II partie (Jebbajwluu)

Aairis' opayudi - Volkshied

Andante moderato, (♩ = 50)

51/52

51

Handwritten musical score for piano, consisting of eight systems of staves. The notation includes treble and bass clefs, various time signatures (2/4, 3/4, 4/4), and complex chordal textures. Performance markings include *pp*, *dim*, and *ped...*. Measure numbers 20 and 26 are indicated. The score shows a progression of chords and melodic lines across the systems.

Two empty musical staves at the bottom of the page, consisting of five-line systems.

57

57

Handwritten musical score for measures 25-30. The score is written on three staves: Treble, Middle, and Bass. Measure 25 is marked with a large '25'. The music features complex rhythmic patterns with many beamed notes and rests. Pedal markings 'Ped...' are present below the bass staff. The key signature changes from one sharp to one flat between measures 25 and 26.

58

58

Handwritten musical score for measures 30-35. The score is written on three staves: Treble, Middle, and Bass. Measure 30 is marked with a large '30'. Measure 35 is marked with a large '35'. The music continues with complex rhythmic patterns and beamed notes. Pedal markings 'Ped...' are present below the bass staff. The key signature changes from one flat to one sharp between measures 30 and 31.

510

510

Handwritten musical score for measures 35-40. The score is written on three staves: Treble, Middle, and Bass. Measure 35 is marked with a large '35'. Measure 40 is marked with a large '40'. The music features complex rhythmic patterns and beamed notes. A dynamic marking 'sub. p' is present in the middle staff. The key signature changes from one sharp to one flat between measures 35 and 36.

Handwritten musical score for the first section. It consists of two systems of staves. The top system includes a vocal line and a piano accompaniment. The vocal line has a dynamic marking of *dim... pp*. The piano part has a dynamic marking of *pp*. The second system is marked *Fegets* and includes a measure number *45*. It features a complex piano accompaniment with various rhythmic patterns and dynamic markings like *pp* and *ppp*. There are also some handwritten notes on the right side of the page, including *M. and 48*, *dry 52*, and *3/3*.

III *Partie*
Finale

Wie ein Bauerntanz — Ein xapicilucos xapod

Handwritten musical score for the *Finale* section. It begins with the tempo marking *Allegro vivo* and the range *135-160*. The section is marked *Piano Solo* and *Piano*. The score is written for piano and includes a complex, rhythmic accompaniment. There are several measure numbers written in the score, including *5*, *10*, and *4*. The music features various chords and melodic lines, with some handwritten annotations and markings throughout.

Handwritten musical score on aged paper, featuring multiple systems of staves. The notation includes treble and bass clefs, complex rhythmic patterns, and various accidentals (sharps, flats, naturals). Measure numbers 15, 20, 25, 30, 35, and 40 are clearly marked. The score includes dynamic markings such as *calant* and *mf*. There are also some handwritten annotations in blue ink, including a large '5' and some circled numbers like '2', '3', '1', '2', '1', '2', '5', '1'.

Four empty musical staves at the bottom of the page, intended for further notation.

Handwritten musical notation on a single staff, featuring treble clef, a key signature of one sharp (F#), and a common time signature (C). The notation includes several measures of music with slurs and accents. The number "11" is written below the staff.

Handwritten musical notation on two staves. The upper staff is in treble clef and the lower staff is in bass clef. The music is in 4/4 time and includes various chordal textures and melodic lines. The number "5" is written above the second measure of the upper staff.

Handwritten musical notation on two staves. The upper staff is in treble clef and the lower staff is in bass clef. The music continues with complex harmonic structures. The number "50" is written above the first measure of the upper staff.

Handwritten musical notation on two staves. The upper staff is in treble clef and the lower staff is in bass clef. The music features a melodic line in the upper staff and a more rhythmic accompaniment in the lower staff. The word "gua" is written below the first measure of the upper staff.

Handwritten musical notation on two staves. The upper staff is in treble clef and the lower staff is in bass clef. The music consists of dense chordal patterns. The number "3" is written above the first measure of the upper staff.

Handwritten musical notation on two staves. The upper staff is in treble clef and the lower staff is in bass clef. The music continues with complex harmonic textures. The number "60" is written below the first measure of the upper staff.

Handwritten musical notation on two staves. The upper staff is in treble clef and the lower staff is in bass clef. The music features a melodic line in the upper staff and a more rhythmic accompaniment in the lower staff. The number "2" is written below the first measure of the upper staff.

Handwritten musical notation on two staves. The upper staff is in treble clef and the lower staff is in bass clef. The music continues with complex harmonic textures. The number "5" is written below the first measure of the upper staff.

Handwritten musical notation on a single staff, featuring a treble clef and a key signature of one sharp (F#). The notation includes various note values and rests. The number "65" is written below the first measure, and "70" is written below the fifth measure.

Handwritten musical notation on a grand staff (treble and bass clefs). The notation is dense with chords and melodic lines. The number "75" is written below the first measure, and "80" is written below the fifth measure. The word "dim" is written above the staff in the latter part of the system.

Handwritten musical notation on a single staff, continuing the piece. The number "75" is written below the first measure, and "80" is written below the fifth measure.

Handwritten musical notation on a grand staff. The notation includes many chords and melodic fragments. The number "85" is written below the first measure, and "90" is written below the fifth measure.

Handwritten musical notation on a single staff. The number "85" is written below the first measure, and "90" is written below the fifth measure. The word "dim" is written above the staff, and "staccato" is written in a circle below the staff.

Handwritten musical notation on a grand staff. The notation is very dense with many notes and chords. The number "90" is written below the first measure, and "95" is written below the fifth measure.

Handwritten musical notation on a single staff. The number "90" is written below the first measure, and "95" is written below the fifth measure.

Handwritten musical notation on a grand staff. The notation includes many chords and melodic lines. The number "95" is written below the first measure, and "90" is written below the fifth measure. The word "dim" is written above the staff.

Four empty musical staves at the bottom of the page, arranged in two pairs.

leggero

This page contains a handwritten musical score for piano, consisting of approximately 12 staves. The notation includes treble and bass clefs, various time signatures, and complex rhythmic patterns. The score is heavily annotated with blue ink, including performance instructions such as *poco cresc.*, *pizz*, *arco*, *calme*, *cresc.*, *sotto*, and *sopra*. Measure numbers 100, 105, 110, 115, and 120 are clearly marked. The piece begins with a *leggero* tempo marking. The notation features many beamed notes, triplets, and dynamic markings like *f* and *p*. There are also some handwritten corrections and markings in blue ink throughout the score.

Handwritten musical notation on a single staff, featuring complex rhythmic patterns and accidentals. The number 125 is written below the staff.

Handwritten musical notation on two staves. The upper staff contains a melodic line with various ornaments and accidentals. The lower staff contains a bass line with chords and rhythmic notation. The number 130 is written between the staves.

Handwritten musical notation on two staves. The upper staff features a melodic line with a series of notes and accidentals. The lower staff contains a bass line with chords. The number 135 is written between the staves.

Handwritten musical notation on a single staff, showing a complex melodic line with many notes and accidentals. The number 135 is written below the staff.

Handwritten musical notation on two staves. The upper staff contains a melodic line with a series of notes and accidentals. The lower staff contains a bass line with chords. The number 140 is written between the staves.

Handwritten musical notation on two staves. The upper staff contains a melodic line with a series of notes and accidentals. The lower staff contains a bass line with chords. The number 145 is written between the staves.

Handwritten musical notation on two staves. The upper staff contains a melodic line with a series of notes and accidentals. The lower staff contains a bass line with chords. The number 140 is written between the staves.

Empty musical staves at the bottom of the page.

Handwritten musical score, measures 145-165. The score is written in blue ink on aged paper. It consists of two systems of staves. The first system includes measures 145-150, with a dynamic marking of *f* and a Roman numeral *IV* in the upper right. The second system includes measures 155-165, with dynamic markings of *f* and *fz*. The notation includes complex rhythmic patterns, accidentals, and slurs. Measure numbers 150, 155, 160, and 165 are clearly marked.

Handwritten musical score, measures 170-175. The score is written in blue ink on aged paper. It consists of two systems of staves. The first system includes measures 170-175, with a dynamic marking of *fz*. The second system includes measures 170-175, with a dynamic marking of *fz*. The notation includes complex rhythmic patterns, accidentals, and slurs. Measure numbers 170 and 175 are clearly marked. The word "five" is written in the right margin of the second system.

170/174
175
5/12