

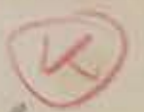
G

Από το φάκτο

624

Thème populaire Grèque — 8 Variationen für Violine, Viola, Cello und Klavier. —
Moderato assai

N. Skalkottas



32

Viol.

Viol. *con fantasia*
Musical notation for Violin, first system.

Cello

Cello *quasi glissando*
ritardato
p (pizz) sur ponticello
Musical notation for Cello, first system.

Piano

Piano *pp*
Musical notation for Piano, first system.

Musical notation for Violin and Cello, second system.

Musical notation for Piano, second system.

Musical notation for Violin and Cello, third system.

Musical notation for Piano, third system.

~~Handwritten scribbles and a large number '2' in the top right corner.~~

15

Handwritten musical notation on a single staff, featuring a treble clef, a key signature of one flat, and a complex melodic line with various accidentals and slurs.

Handwritten musical notation on a single staff, featuring a bass clef and a melodic line with several flats and a final double bar line.

Handwritten musical notation for a grand staff (treble and bass clefs), showing complex chordal textures and melodic fragments.

Handwritten musical notation on a single staff, featuring a treble clef and a series of chords or block chords.

Handwritten musical notation on a single staff, featuring a bass clef and a series of chords or block chords.

Handwritten musical notation for a grand staff, showing a dense texture of notes and chords across both staves.

Handwritten musical notation on a single staff, featuring a treble clef and a melodic line ending with a double bar line.

Handwritten musical notation on a single staff, featuring a bass clef and a melodic line ending with a double bar line.

attaca

Handwritten musical notation for a grand staff, showing a final section of music with various dynamics and articulations.

I Variant.

Allegro

3/

Handwritten musical score for the first variant, measures 1-35. The score is written on a system of five staves. The top staff is in treble clef, and the bottom staff is in bass clef. The music consists of dense chordal textures and melodic lines. Measure numbers 30 and 35 are clearly marked. The tempo is indicated as 'Allegro'.

II Variant. Allegro vivo

Handwritten musical score for the second variant, measures 36-45. The score is written on a system of five staves. The top staff is in treble clef, and the bottom staff is in bass clef. The music consists of dense chordal textures and melodic lines. Measure number 45 is clearly marked. The tempo is indicated as 'Allegro vivo'.

2 Kc. Fc.

4 Fc. 2. 4.

2 Kcor. in E₃ (Ab)

5 Kcor. in B

4 Kcor. in B

4 Kcor. in B

2 Posaunen

1 Alt. Saxophon in E₃

2 Tenor. Sax. in B

2 Bariton. Sax. in E₃

4 Fagotti

2 K. Ophi.

Handwritten musical notation for measures 50-55. The top staff shows a melodic line with various accidentals. Below it are staves for woodwinds and brass, with notes and rests. The notation is dense and includes many accidentals.

III Variat. Allegretto

55

Handwritten musical notation for measures 55-60. The notation continues from the previous section, showing complex rhythmic patterns and many accidentals across multiple staves.

60

Handwritten musical notation for measures 60-65. The notation shows a continuation of the musical piece with various instrumental parts.

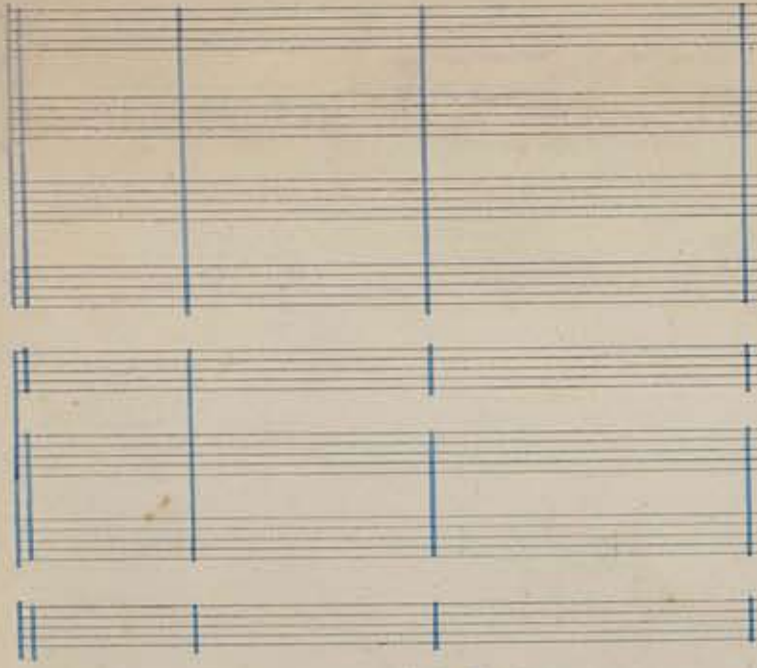
65

Handwritten musical notation for measures 65-70. The notation includes a variety of rhythmic values and accidentals, typical of a handwritten score.

Handwritten musical notation for measures 70-75. The notation shows a continuation of the musical piece with various instrumental parts.

Handwritten musical notation for measures 75-80. The notation includes a variety of rhythmic values and accidentals, typical of a handwritten score.

Handwritten musical notation for measures 80-85. The notation shows a continuation of the musical piece with various instrumental parts.

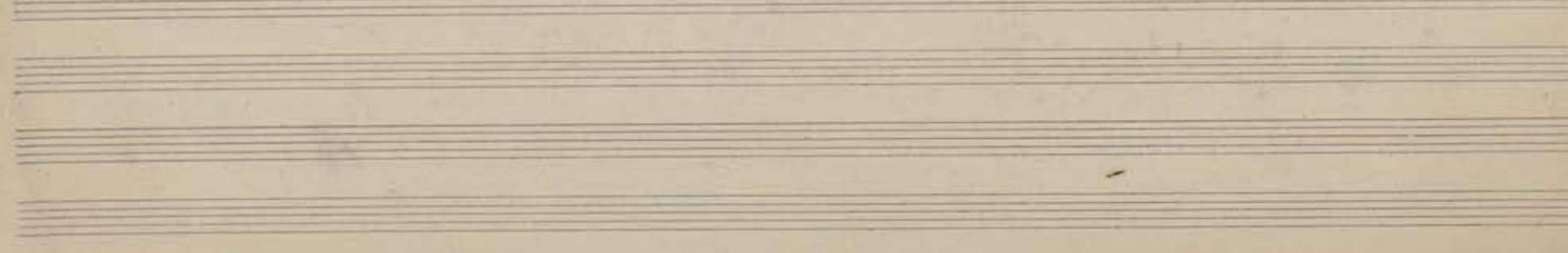


5/ N. J. AMERICAN
MUSIC CO.
NEW YORK

70

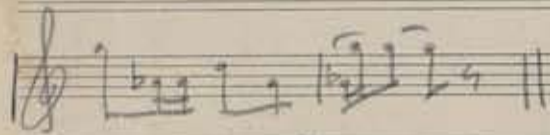
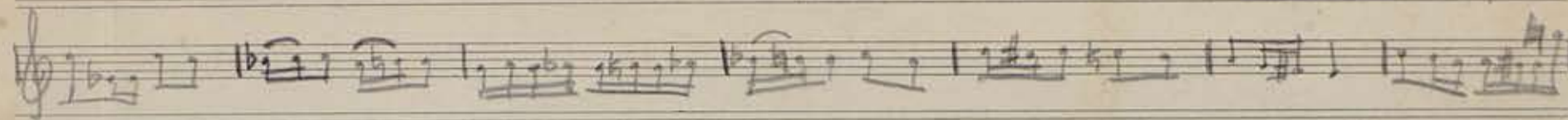
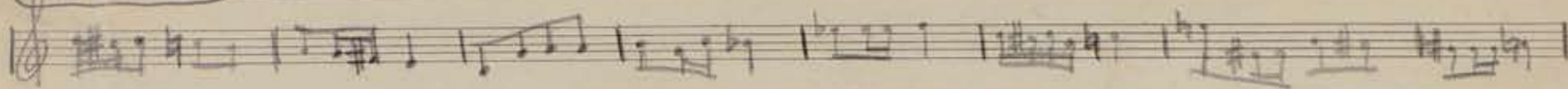
75

80

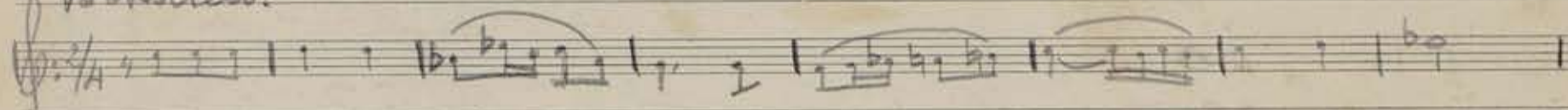




Valseid!

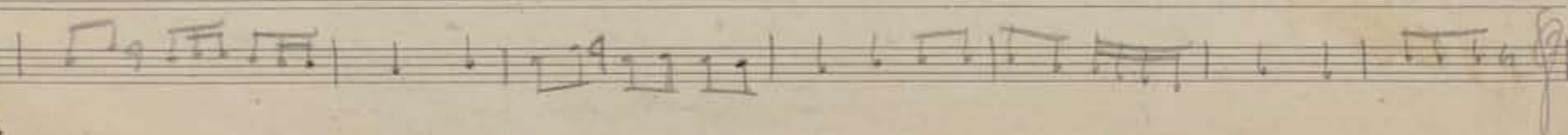
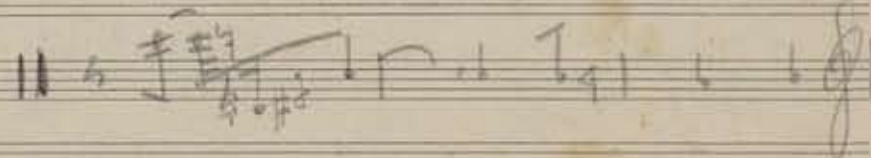
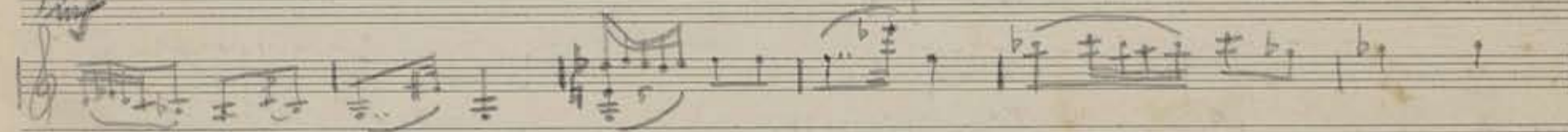


Volkslied!



Volkslied!

Moderato assai



IV Variation
Moderato

85

Handwritten musical notation for measures 85-89. Includes treble and bass staves with notes, rests, and dynamic markings such as *arco* and *pizz*. A circled number '85' is visible in the upper right corner of the page.

Handwritten musical notation for measures 90-94. Includes treble and bass staves with notes, rests, and dynamic markings such as *arco* and *pizz*. A circled number '90' is visible above the first staff.

Handwritten musical notation for measures 95-99. Includes treble and bass staves with notes, rests, and dynamic markings such as *arco* and *pizz*. A circled number '95' is visible above the first staff.

Handwritten musical notation for measures 100-104. Includes treble and bass staves with notes, rests, and dynamic markings such as *arco* and *pizz*. A circled number '100' is visible above the first staff.

Handwritten musical notation for measures 105-109. Includes treble and bass staves with notes, rests, and dynamic markings such as *arco* and *pizz*. A circled number '105' is visible above the first staff.

Handwritten musical notation for measures 110-114. Includes treble and bass staves with notes, rests, and dynamic markings such as *arco* and *pizz*. A circled number '110' is visible above the first staff.

Handwritten musical notation for measures 115-119. Includes treble and bass staves with notes, rests, and dynamic markings such as *arco* and *pizz*. A circled number '115' is visible above the first staff.

110

V *Andante: au moto*

4

Handwritten musical notation for measures 110-115. The notation includes a grand staff with treble and bass clefs. The music consists of several measures with notes, rests, and dynamic markings. A double bar line with a repeat sign is at the end of measure 115.

115

Handwritten musical notation for measures 115-120. The notation continues from the previous system, showing a continuation of the musical piece with various notes and rests.

120

Handwritten musical notation for measures 120-125. The notation shows a continuation of the musical piece with various notes and rests.

125

Handwritten musical notation for measures 125-130. The notation includes a section marked "Sinf" with a dashed line above it, indicating a symphonic or orchestral section.

130

Handwritten musical notation for measures 130-135. The notation shows a continuation of the musical piece with various notes and rests.

135

Handwritten musical notation for measures 135-140. The notation shows a continuation of the musical piece with various notes and rests.

VI Variation

Adagio

cap. mo.

140

8

150

(Piano)

(Piano)

Handwritten musical score for measures 160-165. The notation includes treble and bass clefs, complex chordal textures, and various musical markings such as *pp.* and *arco*. The number 160 is written in the upper right corner of the first system.

9/9

Handwritten musical score for measures 165-170. The notation includes treble and bass clefs, with markings for *arco* and *Dim.* (diminuendo). The number 165 is written at the beginning of the first system.

Handwritten musical score for measures 170-175. The notation includes treble and bass clefs. A section heading *VII Variation* is written above the staff, with the tempo marking *allegroben ritmato* below it. The number 170 is written above the first system, and 175 is written below the second system.

Handwritten musical score for measures 175-180. The notation includes treble and bass clefs, showing complex chordal textures and melodic lines. The number 175 is written below the first system.

Handwritten musical score for measures 180-185. The notation includes treble and bass clefs, with various musical markings. The number 180 is written above the first system.

Allegro

Kanw (4) 133

3

Canon zu drei Stimmen

A handwritten musical score for a three-voice canon. The score is written on ten staves, each with a treble and bass clef. The music is in a key with one flat (B-flat major or D minor) and a common time signature. The score is divided into measures by vertical bar lines. There are several measures of music that are heavily scribbled over with dark ink, particularly in the first and second systems. The notation includes various note values, rests, and accidentals. At the bottom of the page, the word "Fine" is written in a decorative, slanted font. The paper shows signs of age, including some staining and a horizontal crease.

22/

26/

30 du du du du

36/

Fine

Handwritten musical notation for the first system, featuring treble and bass staves with notes, rests, and dynamic markings like 'p' and 'f'.

Handwritten musical notation for the second system, continuing the piece with various rhythmic values and accidentals.

Handwritten musical notation for the third system, including a double bar line and the instruction "Fine" with the number "205" below it.

M

Handwritten musical notation for the fourth system, showing a continuation of the musical piece with complex chordal structures.

Handwritten musical notation for the fifth system, featuring a tempo marking "Allegro vivace" and a measure number "210".

Handwritten musical notation for the sixth system, including the instruction "Variation (Finale)" and "Allegro vivace".

Handwritten musical notation for the seventh system, concluding the piece with various musical notations and a measure number "220".

225

12

Handwritten musical notation for measure 225, top staff. It features a treble clef and a key signature of one sharp (F#). The notation includes quarter notes, eighth notes, and a half note, with various accidentals and slurs.

Handwritten musical notation for measure 225, bottom staff. It features a bass clef and a key signature of one sharp (F#). The notation includes quarter notes, eighth notes, and a half note, with various accidentals and slurs.

m

Handwritten musical notation for measure 226, top and bottom staves. The top staff is in treble clef and the bottom staff is in bass clef, both with a key signature of one sharp (F#). The notation is complex, featuring many accidentals, slurs, and dynamic markings.

230

Handwritten musical notation for measure 230, top staff. It features a treble clef and a key signature of one sharp (F#). The notation includes quarter notes, eighth notes, and a half note, with various accidentals and slurs.

Handwritten musical notation for measure 230, bottom staff. It features a bass clef and a key signature of one sharp (F#). The notation includes quarter notes, eighth notes, and a half note, with various accidentals and slurs.

Handwritten musical notation for measure 231, top and bottom staves. The top staff is in treble clef and the bottom staff is in bass clef, both with a key signature of one sharp (F#). The notation is complex, featuring many accidentals, slurs, and dynamic markings.

235

Handwritten musical notation for measure 235, top staff. It features a treble clef and a key signature of one sharp (F#). The notation includes quarter notes, eighth notes, and a half note, with various accidentals and slurs.

Handwritten musical notation for measure 235, bottom staff. It features a bass clef and a key signature of one sharp (F#). The notation includes quarter notes, eighth notes, and a half note, with various accidentals and slurs.

Handwritten musical notation for measure 236, top and bottom staves. The top staff is in treble clef and the bottom staff is in bass clef, both with a key signature of one sharp (F#). The notation is complex, featuring many accidentals, slurs, and dynamic markings.

I V. (Tenor) II V. (Soprano)

21

Musical notation for the first vocal line with lyrics: *mi mi lip - van, ma - va mi mi lip - van*

Piano accompaniment for the first system, including treble and bass staves with chords and melodic lines.

Musical notation for the second vocal line with lyrics: *mi mi lip - van, ma - va*

Piano accompaniment for the second system, including treble and bass staves with chords and melodic lines.

Musical notation for the third vocal line with lyrics: *mi lor ko - aa - vo mi mi lip - van*

Piano accompaniment for the third system, including treble and bass staves with chords and melodic lines.

Musical notation for the fourth vocal line with lyrics: *mi va mi lor ko - aa - vo rall -*

Piano accompaniment for the fourth system, including treble and bass staves with chords and melodic lines.

5

I (Tenor) II (Soprano)

ped - - - - -

rall - - - - -

ped - - - - -

250

14/1

14

255

I (Tenor) II (Soprano)

Handwritten musical notation for the first system, featuring a vocal line with lyrics "dieu mi sup-ven, mi va, mi mi sup-ven" and a piano accompaniment. The key signature has one sharp (F#) and the time signature is 2/4. A dynamic marking of *p* is present.

Handwritten musical notation for the second system, showing the piano accompaniment for the first system. It includes chordal textures and some melodic lines in both hands.

Handwritten musical notation for the third system, featuring a vocal line with lyrics "mi dieu mi sup-ven, mi va," and a piano accompaniment. A circled number "5" is written below the vocal line.

Handwritten musical notation for the fourth system, showing the piano accompaniment for the third system. It includes chordal textures and some melodic lines in both hands.

(Tenor) (Soprano)

Handwritten musical notation for the fifth system, featuring a vocal line with lyrics "mi dieu vo-vo" and "dieu mi sup-ven" and a piano accompaniment. The key signature changes to two sharps (F# and C#).

Handwritten musical notation for the sixth system, showing the piano accompaniment for the fifth system. It includes chordal textures and some melodic lines in both hands.

Handwritten musical notation for the seventh system, featuring a vocal line with lyrics "mi va, mi dieu vo-vo" and a piano accompaniment. A circled number "10" is written below the vocal line. The tempo marking *rall.* is present.

Handwritten musical notation for the eighth system, showing the piano accompaniment for the seventh system. It includes chordal textures and some melodic lines in both hands. The tempo marking *rall.* is present.

260

Handwritten musical notation for the first system of exercise 260, featuring a treble clef and a 9/8 time signature. The notation includes a series of chords and melodic lines.

stringendo

Handwritten musical notation for the second system of exercise 260, featuring a bass clef.

stringendo

Handwritten musical notation for the third system of exercise 260, featuring a grand staff with both treble and bass clefs.

stringendo

Handwritten musical notation for the first system of exercise 265, featuring a treble clef.

265

Handwritten musical notation for the second system of exercise 265, featuring a bass clef.

Handwritten musical notation for the third system of exercise 265, featuring a grand staff with both treble and bass clefs.

Handwritten musical notation for the first system of exercise 270, featuring a treble clef.

270

Handwritten musical notation for the second system of exercise 270, featuring a bass clef.

Handwritten musical notation for the third system of exercise 270, featuring a grand staff with both treble and bass clefs.

Tempo

Handwritten musical notation on a single staff. It begins with a treble clef and a key signature of one sharp (F#). The first measure contains a triplet of eighth notes. The lyrics below the staff are: "ro'e-já de ro'e é - o-á - pu - ro' ka-ka-260' - áá -". A circled number "15" is written above the staff in the third measure.

Handwritten musical notation for piano accompaniment, consisting of two staves (treble and bass clefs). The first two measures show chords in the right hand and single notes in the left hand. The third and fourth measures show chords in the right hand and a slash in the left hand, indicating a rest.

Handwritten musical notation for piano accompaniment, consisting of two staves. The first measure shows a treble clef with a key signature change to one flat (Bb) and a measure rest. The second measure shows chords in both hands. The piece concludes with a double bar line and repeat slashes.

Seven sets of empty musical staves, each consisting of a treble clef staff and a bass clef staff, arranged vertically down the page.

Tempo I

161

ritardando

Tempo I

275

280

(Λαϊκά ενλόγιον)

2/

Handwritten musical notation for the first system, consisting of two staves with treble and bass clefs, showing chords and melodic lines.

(Λαϊκά)

Handwritten musical notation for the second system, including a large 'C' time signature and two staves with treble and bass clefs.

Handwritten musical notation for the third system, including a large 'II' section marker and two staves with treble and bass clefs.

Handwritten musical notation for the fourth system, including a large 'III' section marker and two staves with treble and bass clefs.

Μισόγυρος
 Μισός διόλογος
 Στίχοι εκδοχέοιο

Handwritten musical notation for the fifth system, including a large 'C' time signature and two staves with treble and bass clefs.

285

17/

17-

Handwritten musical notation for the first system, top staff. It features a treble clef and a key signature of one sharp (F#). The notation includes a series of notes with various accidentals (sharps, naturals, flats) and a fermata over the final note.

Handwritten musical notation for the first system, bottom staff. It features a bass clef and contains several chords and notes, including a measure with a '5' above a group of notes.

Handwritten musical notation for the second system, top and middle staves. The top staff has a treble clef and a key signature of one sharp. The middle staff has a bass clef. The system includes various musical notations such as notes, rests, and chords, with a measure number '290' written between the staves.

Handwritten musical notation for the second system, bottom staff. It features a bass clef and contains a series of notes with various accidentals.

Handwritten musical notation for the third system, top and middle staves. The top staff has a treble clef and a key signature of one sharp. The middle staff has a bass clef. The system includes various musical notations such as notes, rests, and chords, with a measure number '295' written between the staves.

Handwritten musical notation for the third system, bottom staff. It features a bass clef and contains several chords and notes, including a measure with a '5' above a group of notes.

Handwritten musical notation for the fourth system, top staff. It features a treble clef and a key signature of one sharp. The notation includes a series of notes with various accidentals.

Handwritten musical notation for the fourth system, middle and bottom staves. The middle staff has a treble clef and the bottom staff has a bass clef. The system includes various musical notations such as notes, rests, and chords, with the word 'piano' written vertically in the middle staff.

Handwritten musical notation on a single staff, featuring a treble clef, a key signature of one flat, and a 9/8 time signature. The notation includes a half note, a quarter note, and a complex chord structure with accidentals. A slur is placed over the final two measures. The word "piano" is written below the staff.

Handwritten musical notation on a single staff, featuring a treble clef, a key signature of one flat, and a 9/8 time signature. The notation includes a half note, a quarter note, and a complex chord structure with accidentals. A slur is placed over the final two measures. The word "piano" is written below the staff.

Handwritten musical notation on two staves. The upper staff has a treble clef and a key signature of one flat. The lower staff has a bass clef and a key signature of one flat. Both staves contain complex chordal structures with accidentals. A slur is placed over the final two measures of the lower staff. The word "piano" is written between the staves.

Handwritten musical notation on a single staff, featuring a treble clef, a key signature of one flat, and a 9/8 time signature. The notation includes a half note, a quarter note, and a complex chord structure with accidentals. A slur is placed over the final two measures.

Handwritten musical notation on two staves. The upper staff has a treble clef and a key signature of one flat. The lower staff has a bass clef and a key signature of one flat. Both staves contain complex chordal structures with accidentals. A slur is placed over the final two measures of the lower staff. The word "piano" is written between the staves.

Handwritten musical notation on a single staff, featuring a treble clef, a key signature of one flat, and a 9/8 time signature. The notation includes a half note, a quarter note, and a complex chord structure with accidentals. A slur is placed over the final two measures. The word "Fine" is written at the end of the staff.

Handwritten musical notation on two staves. The upper staff has a treble clef and a key signature of one flat. The lower staff has a bass clef and a key signature of one flat. Both staves contain complex chordal structures with accidentals. A slur is placed over the final two measures of the lower staff. The word "Fine" is written at the end of the staff.