

C

Solo - Contrebass

Κοντσέρτο για Κοντραμπάσο σόλο και

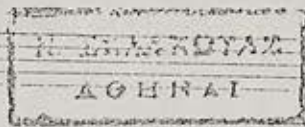
μεγάλη ορχήστρα.

N. Σκαγκιώτας

Konzert für Contrebass Solo und grosses

Orchester.

N. Skalkottas



Cantata für Solo Cantabasso und großes Orchester

Andante

Später möglich - Erster Satz

110

Allargro

Tutti

115

Solo

2. f. Cadenza

50

cresc.

vite

vibrato

55

Handwritten musical notation, first system, bass clef. Includes a double bar line and a fermata.

Handwritten musical notation, second system, bass clef. Includes a tempo marking of 70 and the instruction *cresc.*

Handwritten musical notation, third system, treble clef. Includes a tempo marking of 75.

Handwritten musical notation, fourth system, treble clef. Includes a *dim.* marking.

Handwritten musical notation, fifth system, bass clef. Includes a tempo marking of 80.

Handwritten musical notation, sixth system, bass clef. Includes a *dim.* marking.

Handwritten musical notation, seventh system, bass clef. Includes the instruction *mf molto espressivo*.

Handwritten musical notation, eighth system, bass clef. Includes a tempo marking of 90.

Handwritten musical notation, ninth system, bass clef. Includes a tempo marking of 95.

Handwritten musical notation, tenth system, bass clef. Includes a *dim.* marking.

Handwritten musical notation, eleventh system, treble clef. Includes a tempo marking of 100 and the instruction *ritardamento*.

Handwritten musical notation, twelfth system, bass clef. Includes a tempo marking of 105.

110

115

120

125

130

135

Handwritten musical notation on a single staff, featuring a treble clef and a key signature of one flat. The notation includes a series of eighth notes, a fermata, and a measure with a '6' written below it. A tempo marking of '110' is present in the upper right corner.

Handwritten musical notation on a single staff, featuring a treble clef and a key signature of one flat. The notation includes a series of eighth notes and a fermata. A tempo marking of '110' is present in the upper left corner.

Handwritten musical notation on a single staff, featuring a treble clef and a key signature of one flat. The notation includes a series of eighth notes and a fermata. A tempo marking of '150' is present in the upper left corner, along with the word 'falso' and the dynamic marking 'mf'.

Handwritten musical notation on a single staff, featuring a treble clef and a key signature of one flat. The notation includes a series of eighth notes and a fermata. A tempo marking of '155' is present in the upper right corner.

Handwritten musical notation on a single staff, featuring a treble clef and a key signature of one flat. The notation includes a series of eighth notes and a fermata.

Handwritten musical notation on a single staff, featuring a treble clef and a key signature of one flat. The notation includes a series of eighth notes and a fermata. A tempo marking of '160' is present in the upper right corner.

Handwritten musical notation on a single staff, featuring a treble clef and a key signature of one flat. The notation includes a series of eighth notes and a fermata.

Handwritten musical notation on a single staff, featuring a treble clef and a key signature of one flat. The notation includes a series of eighth notes and a fermata. A tempo marking of '165' is present in the upper left corner.

Handwritten musical notation on a single staff, featuring a treble clef and a key signature of one flat. The notation includes a series of eighth notes and a fermata. A tempo marking of '170' is present in the upper left corner.

Handwritten musical notation on a single staff, featuring a treble clef and a key signature of one flat. The notation includes a series of eighth notes and a fermata. A tempo marking of '170' is present in the upper left corner, and the dynamic marking 'molto espressivo' is written below the staff.

Handwritten musical notation on a single staff, featuring a treble clef and a key signature of one flat. The notation includes a series of eighth notes and a fermata. A tempo marking of '175' is present in the upper right corner.

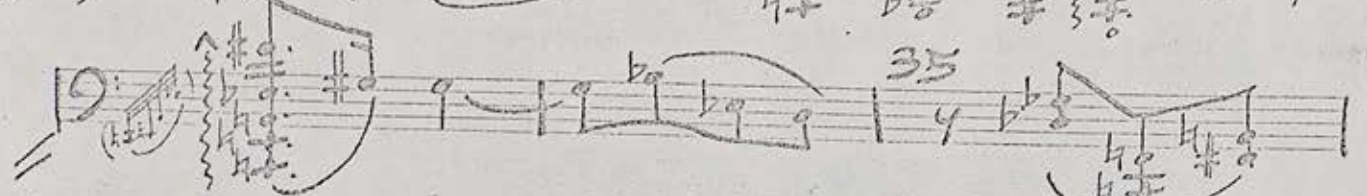
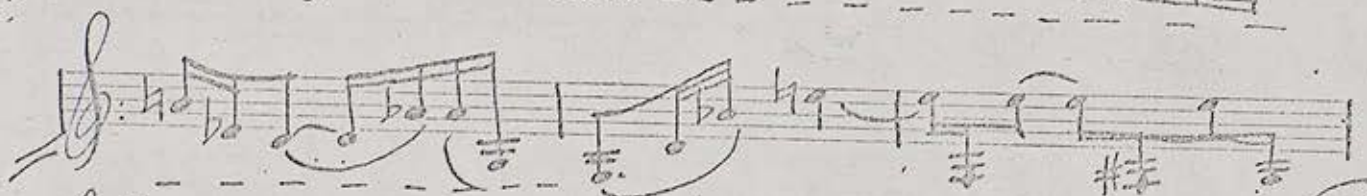
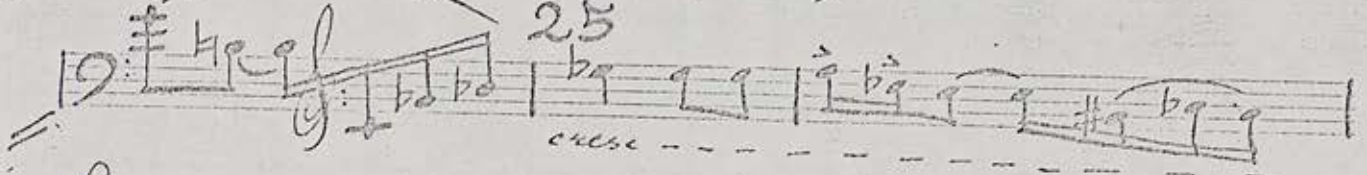
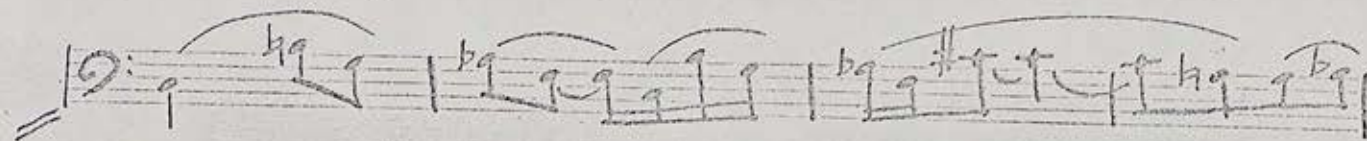
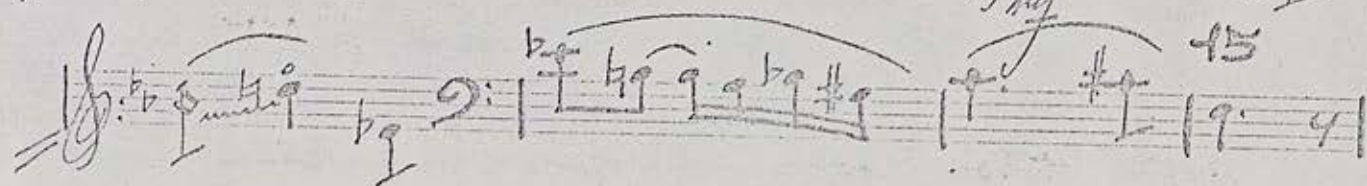
Handwritten musical notation on a single staff, featuring a treble clef and a key signature of one flat. The notation includes a series of eighth notes and a fermata.

Handwritten musical score on a single page, featuring multiple staves of music. The score includes several measures, with measure numbers 185, 190, 195, 200, 205, and 210 clearly marked. The notation includes treble and bass clefs, various time signatures, and complex rhythmic patterns. Key markings include *Molto Allegro marcato* and *Très vite*. A *Solo* marking is present near measure 190. A 3-measure rest is indicated near measure 195. The manuscript shows signs of being a working draft, with some ink bleed-through and corrections.



Tristepor pipel - 2. venter Saite

Andantino



Handwritten musical notation on a single staff, bass clef. Includes notes with accidentals (sharps and flats) and a measure number '40' written above the staff.

Handwritten musical notation on a single staff, bass clef. Includes notes with accidentals and a measure number '45' written above the staff.

Handwritten musical notation on a single staff, bass clef. Includes notes with accidentals and a measure number '50' written above the staff.

Handwritten musical notation on a single staff, bass clef. Includes notes with accidentals and a measure number '55' written above the staff. The instruction *molto espressivo* is written below the staff.

Handwritten musical notation on a single staff, bass clef. Includes notes with accidentals and a measure number '60' written above the staff.

Handwritten musical notation on a single staff, bass clef. Includes notes with accidentals and a measure number '65' written above the staff. The instruction *allegro* is written above the staff.

Handwritten musical notation on a single staff, treble clef. Includes notes with accidentals and a measure number '70' written above the staff.

Handwritten musical notation on a single staff, treble clef. Includes notes with accidentals and a measure number '75' written above the staff.

Handwritten musical notation on a single staff, treble clef. Includes notes with accidentals and a measure number '80' written above the staff.

Handwritten musical notation on a single staff, treble clef. Includes notes with accidentals and a measure number '85' written above the staff.

Handwritten musical notation on a single staff, treble clef. Includes notes with accidentals and a measure number '90' written above the staff.

Handwritten musical notation on a single staff, bass clef. Includes notes with accidentals and a measure number '95' written above the staff.

Handwritten musical notation on a single staff, featuring a treble clef and a key signature of one flat. The notes are: B^b, A^b, G^b, F^b, E^b, D^b, C^b, B^b, A^b, G^b, F^b, E^b, D^b, C^b. A tempo marking of 80 is written above the staff.

Handwritten musical notation on a single staff, featuring a treble clef and a key signature of one flat. The notes are: B^b, A^b, G^b, F^b, E^b, D^b, C^b, B^b, A^b, G^b, F^b, E^b, D^b, C^b.

Handwritten musical notation on a single staff, featuring a treble clef and a key signature of one flat. The notes are: B^b, A^b, G^b, F^b, E^b, D^b, C^b, B^b, A^b, G^b, F^b, E^b, D^b, C^b. A tempo marking of 85 is written above the staff.

Handwritten musical notation on a single staff, featuring a treble clef and a key signature of one flat. The notes are: B^b, A^b, G^b, F^b, E^b, D^b, C^b, B^b, A^b, G^b, F^b, E^b, D^b, C^b.

Handwritten musical notation on a single staff, featuring a treble clef and a key signature of one flat. The notes are: B^b, A^b, G^b, F^b, E^b, D^b, C^b, B^b, A^b, G^b, F^b, E^b, D^b, C^b. A dynamic marking of *pp* is written below the staff.

Trilov nepod — *Dritter Satz*
Allegro vivo et molto ritmato

Handwritten musical notation on a single staff, featuring a treble clef and a key signature of one flat. The notes are: B^b, A^b, G^b, F^b, E^b, D^b, C^b, B^b, A^b, G^b, F^b, E^b, D^b, C^b. A dynamic marking of *mf* and a tempo marking of *gracioso* are written above the staff.

Handwritten musical notation on a single staff, featuring a treble clef and a key signature of one flat. The notes are: B^b, A^b, G^b, F^b, E^b, D^b, C^b, B^b, A^b, G^b, F^b, E^b, D^b, C^b. A tempo marking of 5 is written above the staff.

Handwritten musical notation on a single staff, featuring a treble clef and a key signature of one flat. The notes are: B^b, A^b, G^b, F^b, E^b, D^b, C^b, B^b, A^b, G^b, F^b, E^b, D^b, C^b.

Handwritten musical notation on a single staff, featuring a treble clef and a key signature of one flat. The notes are: B^b, A^b, G^b, F^b, E^b, D^b, C^b, B^b, A^b, G^b, F^b, E^b, D^b, C^b. A tempo marking of 40 is written above the staff.

Handwritten musical notation on a single staff, featuring a treble clef and a key signature of one flat. The notes are: B^b, A^b, G^b, F^b, E^b, D^b, C^b, B^b, A^b, G^b, F^b, E^b, D^b, C^b. A tempo marking of 4 is written above the staff.

Handwritten musical notation on a single staff, featuring a treble clef and a key signature of one flat. The notes are: B^b, A^b, G^b, F^b, E^b, D^b, C^b, B^b, A^b, G^b, F^b, E^b, D^b, C^b. A tempo marking of 15 is written above the staff.

Handwritten musical notation on a single staff, featuring a series of eighth notes with various accidentals and slurs.

Handwritten musical notation on a single staff, featuring a series of eighth notes with various accidentals and slurs.

20

Handwritten musical notation on a single staff, starting with a measure number '20'. It features eighth notes and slurs.

Handwritten musical notation on a single staff, featuring eighth notes and slurs.

25

Handwritten musical notation on a single staff, starting with a measure number '25'. It includes a guitar chord diagram.

Handwritten musical notation on a single staff, featuring slurs and various accidentals.

30

Tutti 35

Handwritten musical notation on a single staff, starting with a measure number '30'. It includes the word 'Tutti' and a measure number '35'.

Solo

Handwritten musical notation on a single staff, starting with the word 'Solo'. It features slurs and various accidentals.

Handwritten musical notation on a single staff, featuring eighth notes and slurs.

45

Handwritten musical notation on a single staff, starting with a measure number '45'. It features eighth notes and slurs.

Handwritten musical notation on a single staff, featuring eighth notes and slurs.

50

Handwritten musical notation on a single staff, starting with a measure number '50'. It includes the word 'cresc' and a dynamic marking 'f'.

Handwritten musical notation on a single staff, bass clef, 2/4 time signature. The music consists of several measures with notes and accidentals. A measure number '55' is written above the staff.

Handwritten musical notation on a single staff, bass clef, 2/4 time signature. The music consists of several measures with notes and accidentals.

Handwritten musical notation on a single staff, bass clef, 2/4 time signature. The music consists of several measures with notes and accidentals. A measure number '60' is written above the staff.

Handwritten musical notation on a single staff, bass clef, 2/4 time signature. The music consists of several measures with notes and accidentals. A measure number '65' is written above the staff.

Handwritten musical notation on a single staff, bass clef, 2/4 time signature. The music consists of several measures with notes and accidentals.

Handwritten musical notation on a single staff, bass clef, 2/4 time signature. The music consists of several measures with notes and accidentals. A measure number '70' is written above the staff.

Handwritten musical notation on a single staff, treble clef, 2/4 time signature. The music consists of several measures with notes and accidentals.

Handwritten musical notation on a single staff, treble clef, 2/4 time signature. The music consists of several measures with notes and accidentals. A measure number '75' is written above the staff.

Handwritten musical notation on a single staff, treble clef, 2/4 time signature. The music consists of several measures with notes and accidentals.

Handwritten musical notation on a single staff, treble clef, 2/4 time signature. The music consists of several measures with notes and accidentals. A measure number '80' is written above the staff.

Handwritten musical notation on a single staff, treble clef, 2/4 time signature. The music consists of several measures with notes and accidentals.

Handwritten musical notation on a single staff, treble clef, 2/4 time signature. The music consists of several measures with notes and accidentals. A measure number '85' is written above the staff.

90 *Tutti* 95 111

100

Solo 105

110

115

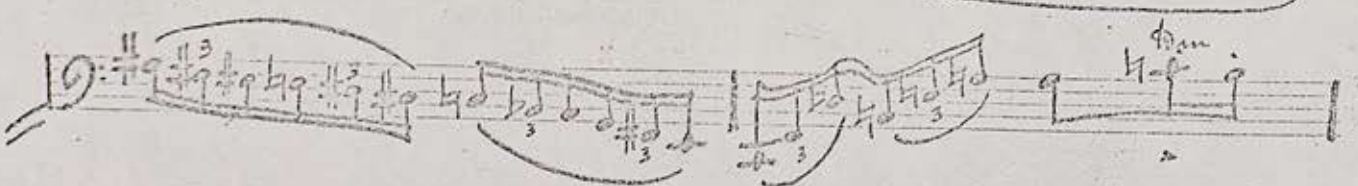
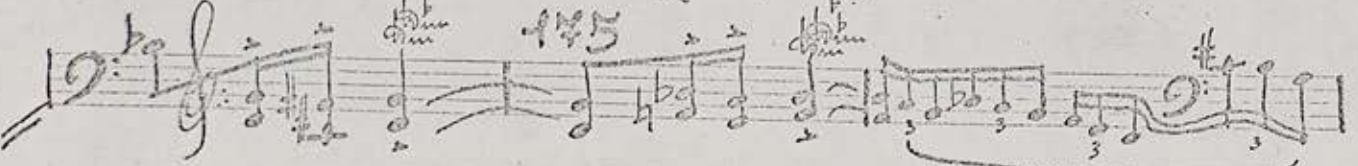
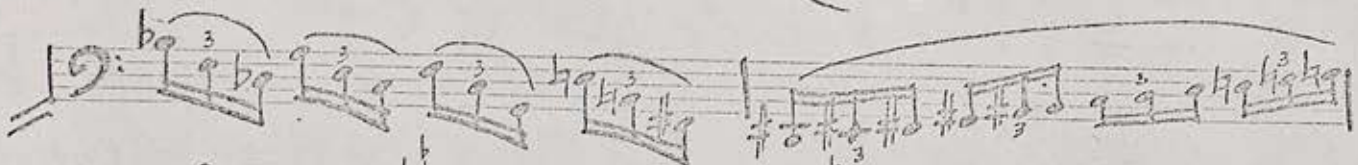
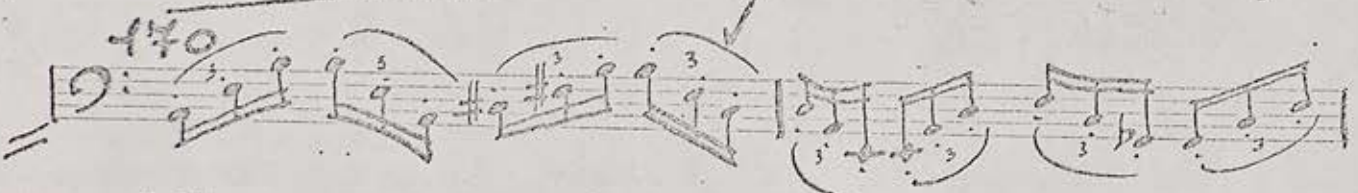
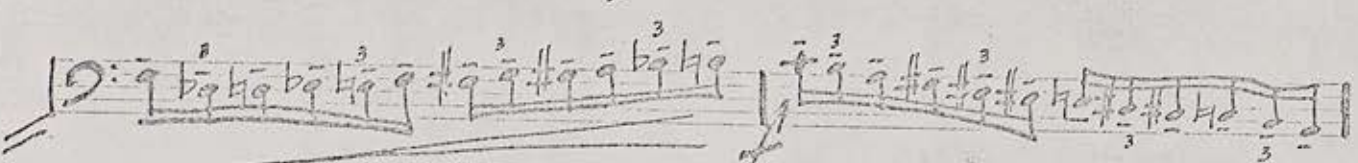
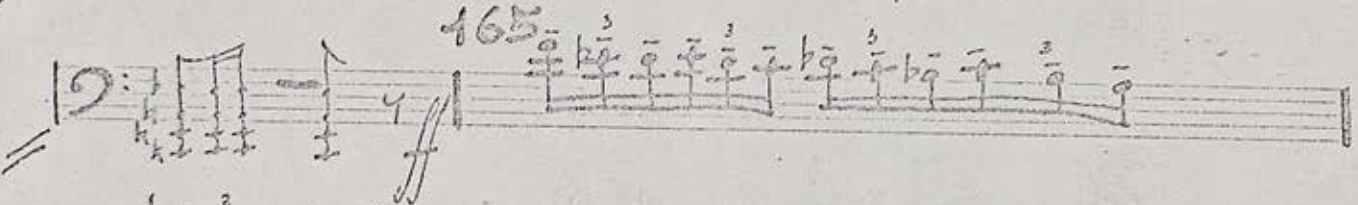
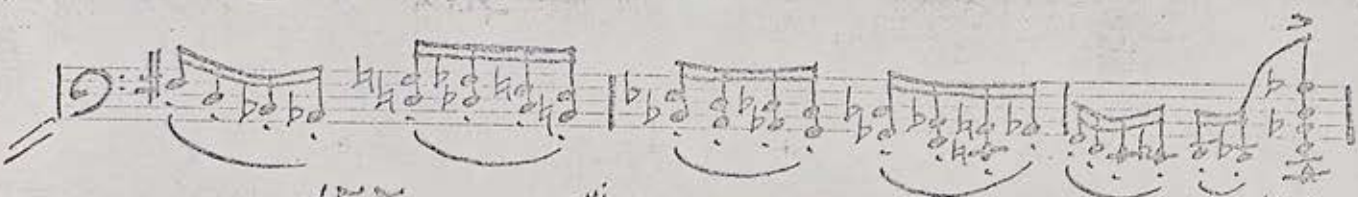
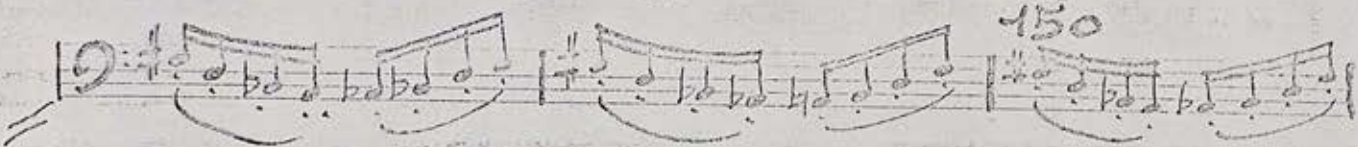
120

125

130

135

140



180 *dim.*

185 *dim.*

190

195 *cresc.*

200

205 *cresc.*

210

215

220

225

230

Handwritten musical score on ten staves, numbered 215 through 265. The notation includes notes, rests, and dynamic markings such as *f* and *dim*. The score concludes with the word "FINE" on the final staff.

215

220

225

230

235

240

245

250

255

260

265

FINE