

C

Ανάλυση Σιδέρη στο κ=Καρίνη Ευδοκίου (Παπασημιά)

α 20 β 7

Konzertino für zwei Klaviere und Orchester

N. Skalkottas. (1935)

Allegro

I

Brass

Brass

Brass

Brass

Brass

Brass

20

Orchestra

p

25

Orchestra

mf

dim.

Orchestra

p

dim.

30

Orchestra

f

Brass

I Clarinet

II Clarinet

35

Brass

I Clarinet

II Clarinet

gua

Brickwork

I Klavier

II Klavier

Brickwork

I Klavier

II Klavier

01 (30)

♯5

Orchestra

Handwritten musical score for the Orchestra section, consisting of two staves. The notation includes various rhythmic values, accidentals, and dynamic markings such as *f* and *p*. The music is written in a complex, multi-measure style.

I Clarinet

Handwritten musical score for the I Clarinet section, consisting of two staves. The notation includes melodic lines with slurs and dynamic markings such as *f*. A circled *♯5* is visible above the staff.

II Clarinet

Handwritten musical score for the II Clarinet section, consisting of two staves. The notation includes melodic lines with slurs and dynamic markings such as *f*. A circled *♯5* is visible above the staff.

Orchestra

Handwritten musical score for the Orchestra section, consisting of two staves. The notation includes complex rhythmic patterns, slurs, and dynamic markings such as *f* and *pizz*. A circled *mf* is visible above the staff.

I Clarinet

Handwritten musical score for the I Clarinet section, consisting of two staves. The notation includes melodic lines with slurs and dynamic markings such as *mf* and *ff*. A circled *mf* is visible above the staff.

II Clarinet

Handwritten musical score for the II Clarinet section, consisting of two staves. The notation includes melodic lines with slurs and dynamic markings such as *ff*.

Bretardes

50

pizz

gva-----

I K. Curier

mf

50

II K. Curier

p

50

Bretardes

gva

mf

arco

I K. Curier

II K. Curier

f

gva

resc

55
Orchester

55
I. Clarinet

55
II. Clarinet

Orchester

I. Clarinet

II. Clarinet

60

Orchestra

60

I Violin

pp

60

II Violin

Brass

I Cello

65

II Cello

Orrchester

8va

I Klavier

mf

I Klavier

Orrchester

I Klavier

I Klavier

70

Brecheles

70

cresc.

I Klarin

70

II Klarin

70

Brecheles

72

cresc.

I Klarin

II Klarin

Preceder

75

I Klavier

75

II Klavier

75

Preceder

I Klavier

II Klavier

80

Orchester

I Klavier

II Klavier

Orchester

I Klavier

II Klavier

85

Bretcher

Musical notation for the Bretcher part, measures 85-87. The notation is written on a grand staff with a treble clef and a bass clef. It features a complex rhythmic pattern with many beamed notes and rests.

85

I Klawier

Musical notation for the I Klawier part, measures 85-87. The notation is written on a grand staff with a treble clef and a bass clef. It features a complex rhythmic pattern with many beamed notes and rests.

85

II Klawier

Musical notation for the II Klawier part, measures 85-87. The notation is written on a grand staff with a treble clef and a bass clef. It features a complex rhythmic pattern with many beamed notes and rests.

Bretcher

Musical notation for the Bretcher part, measures 88-90. The notation is written on a grand staff with a treble clef and a bass clef. It features a complex rhythmic pattern with many beamed notes and rests.

I Klawier

Musical notation for the I Klawier part, measures 88-90. The notation is written on a grand staff with a treble clef and a bass clef. It features a complex rhythmic pattern with many beamed notes and rests.

II Klawier

Musical notation for the II Klawier part, measures 88-90. The notation is written on a grand staff with a treble clef and a bass clef. It features a complex rhythmic pattern with many beamed notes and rests.

90

Oboe

90

I Clarinet

90

II Clarinet

95

Oboe

95

I Clarinet

95

II Clarinet

Brecker

Two staves of music, both containing rests. The top staff is in treble clef and the bottom staff is in bass clef.

I Klavier

Two staves of music. The top staff is in treble clef and the bottom staff is in bass clef. The music features complex melodic lines with many accidentals and dynamic markings.

Brecker

Two staves of music. The top staff is in treble clef and the bottom staff is in bass clef. The music features complex melodic lines with many accidentals and dynamic markings. A circled "100" is written above the second measure.

I Klavier

Two staves of music. The top staff is in treble clef and the bottom staff is in bass clef. The music features complex melodic lines with many accidentals and dynamic markings. A circled "100" is written above the second measure.

II Klavier

Two staves of music. The top staff is in treble clef and the bottom staff is in bass clef. The music features complex melodic lines with many accidentals and dynamic markings. A circled "100" is written above the second measure. At the bottom right, there are markings for "L.H." and "R.H.".

Bretaster

Measures 1-3. The first staff has a treble clef and a key signature of two flats. The second staff has a bass clef and a key signature of two flats. Both staves have rests in measures 2 and 3.

I Klavier

II Klavier

gua

Measures 4-6. The first staff (I Klavier) has a treble clef and a key signature of two flats. The second staff (II Klavier) has a bass clef and a key signature of two flats. A dashed box encloses measures 5 and 6 in the first staff, with the annotation 'gua' above it. The second staff has a melodic line with various ornaments and dynamics.

105

Bretaster

pizz

Measures 7-9. The first staff has a treble clef and a key signature of two flats. The second staff has a bass clef and a key signature of two flats. The first staff has a melodic line with a 'pizz' annotation in measure 7.

105

I Klavier

Measures 10-12. The first staff has a treble clef and a key signature of two flats. The second staff has a bass clef and a key signature of two flats. A '10' annotation is present above the first staff in measure 10.

105

II Klavier

espz.

Measures 13-15. The first staff has a treble clef and a key signature of two flats. The second staff has a bass clef and a key signature of two flats. The first staff has a melodic line with an 'espz.' annotation in measure 13.

Orchester

I. Klarinet

II. Klarinet

410

410

410

Orchester

I. Klarinet

II. Klarinet

Orchestra

Handwritten musical notation for the Orchestra section, featuring a treble and bass clef staff with various notes and rests.

I Clarinet

Handwritten musical notation for the I Clarinet section, featuring a treble clef staff with notes and rests.

II Clarinet

Handwritten musical notation for the II Clarinet section, featuring a treble clef staff with notes and rests.

Orchestra

Handwritten musical notation for the Orchestra section, featuring a treble and bass clef staff with notes and rests.

I Clarinet

Handwritten musical notation for the I Clarinet section, featuring a treble clef staff with notes and rests.

II Clarinet

Handwritten musical notation for the II Clarinet section, featuring a treble clef staff with notes and rests.

445

445

445

53

tr 6

Cr. restes

f

120

Cr. restes

rit

120

I k. Corist

rit

120

Cr. restes

125

I k. Corist

ff

ff

ff

125

I k. Corist

f

f

125

Brecker

130

I Kowar

130

II Kowar

130

Brecker

135

I Kowar

135

II Kowar

135

II

Andante

Orchester

Orchester

Orchester

Orchester

Orchester

Orchester

Brass

I Klav.

II Klav.

30

30

30

Brass

I Klav.

II Klav.

pp

mf

f

espressivo

35

Breckerley

35

I Kaw.

35

II Kaw.

40

Breckerley

40

I Kaw.

40

II Kaw.

Brakender

I k. Cou.

II k. Cou.

#5

#5

guaranga Ped

Brakender

I k. Cou.

II k. Cou.

Bricker

I Kcov.

II Kcov.

50

50

50

Bricker

I Kcov.

II Kcov.

pp

pp

Brass

55

pp

f

81 4-12

I Clar.

55

II Clar.

55

Brass

60

pp

ff

3 37

I Clar.

60

II Clar.

60

40

Prerack

I clav.

II clav.

65

65

I clav.

65

II clav.

Gravitas

I. clav.

II. clav.

molto

Gravitas

I. clav.

I. clav.

Bracelet

I. clav.

II. clav.

ff

Bracelet

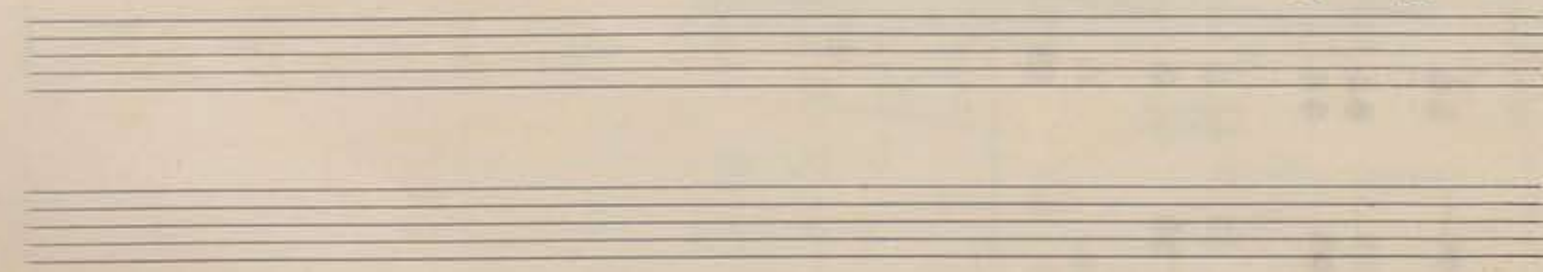
I. clav.

II. clav.

75

75

75



Brass

rit.

I C. w.

II C. w.

I K. w.

II K. w.

Bruscher

I k. Cav.

II k. Cav.

Bruscher

I k. Cav.

II k. Cav.

III

Allegro giusto

Orchestra

I. clavi.

II. clavi.

Orchestra

I. clavi.

II. clavi.

Orchestra

I kcw.

II kcw.

Orchestra

I kcw.

II kcw.

Breider

45

I Kaw.

45

II Kaw.

45

Breider

20

I Kaw.

20

II Kaw.

20

25

Braceley

I k Cow.

II k Cow.

Braceley

I k Cow.

II k Cow.

no 53

30

Brass

I clar.

II clar.

Brass

I clar.

II clar.

Handwritten musical notation for the first system, including notes, rests, and dynamic markings. Includes the number 30 in a red box at the beginning.

Handwritten musical notation for the second system, including notes, rests, and dynamic markings. Includes the number 30 in a red box at the beginning.

Handwritten musical notation for the third system, including notes, rests, and dynamic markings. Includes the number 30 in a red box at the beginning.

Handwritten musical notation for the fourth system, including notes, rests, and dynamic markings. Includes the number 35 in a red box at the beginning.

Handwritten musical notation for the fifth system, including notes, rests, and dynamic markings. Includes the number 35 in a red box at the beginning.

Handwritten musical notation for the sixth system, including notes, rests, and dynamic markings. Includes the number 35 in a red box at the beginning.

Σ

final (51)

guz

rit

rit

rit

53X

mf

f#m

Tempo

Tempo I

Critester

S1 *S2* *S2* *S2*

H0

I k. Cav.

II k. Cav.

Criticster

S1 *S2*

H0

I k. Cav.

II k. Cav.

Crescendo

cresc.

+5

This system contains the first system of handwritten musical notation. It features a piano part on the left and a guitar part on the right. The piano part begins with a *cresc.* (crescendo) marking and includes a dynamic marking of *f* (forte). The guitar part has a red box containing the number **+5** at the beginning. The notation includes various notes, rests, and accidentals.

I k. Cov.

+5

This system contains the second system of handwritten musical notation. It features a piano part on the left and a guitar part on the right. The piano part has a red box containing the number **+5** at the beginning. The notation includes various notes, rests, and accidentals.

II k. Cov.

+5

This system contains the third system of handwritten musical notation. It features a piano part on the left and a guitar part on the right. The piano part has a red box containing the number **+5** at the beginning. The notation includes various notes, rests, and accidentals.

Crescendo

p

50

This system contains the fourth system of handwritten musical notation. It features a piano part on the left and a guitar part on the right. The piano part begins with a *p* (piano) dynamic marking. The guitar part has a red box containing the number **50** at the beginning. The notation includes various notes, rests, and accidentals.

I k. Cov.

f

50

This system contains the fifth system of handwritten musical notation. It features a piano part on the left and a guitar part on the right. The piano part begins with a *f* (forte) dynamic marking. The guitar part has a red box containing the number **50** at the beginning. The notation includes various notes, rests, and accidentals.

II k. Cov.

50

This system contains the sixth system of handwritten musical notation. It features a piano part on the left and a guitar part on the right. The piano part has a red box containing the number **50** at the beginning. The notation includes various notes, rests, and accidentals.

Brass

I k. Cov.

II k. Cov.

fac. chd.

SI

S2

S3

SI k. chd.

Brass

I k. Cov.

II k. Cov.

55

55

55

Breiter

60

I Kaw.

60

II Kaw.

60

Breiter

p
f

I Kaw.

f

II Kaw.

65
Brass
Musical notation for the first system, featuring brass instruments. The system includes a treble clef staff with a key signature of one flat and a common time signature. The music consists of several measures with complex chordal textures and melodic lines. A handwritten number '53' is visible below the first measure.

65
I kcov.
Musical notation for the first system of the first keyboard part. It features a grand staff with treble and bass clefs. The music is primarily chordal, with some melodic movement in the upper voice. A handwritten number '51' is visible below the first measure.

65
II kcov.
Musical notation for the second system of the first keyboard part. It features a grand staff with treble and bass clefs. The music is primarily chordal, with some melodic movement in the upper voice. A handwritten number '52' is visible below the first measure.

70
Brass
Musical notation for the second system, featuring brass instruments. The system includes a treble clef staff with a key signature of one flat and a common time signature. The music consists of several measures with complex chordal textures and melodic lines. A handwritten number '65' is visible below the first measure.

70
I kcov.
Musical notation for the second system of the first keyboard part. It features a grand staff with treble and bass clefs. The music is primarily chordal, with some melodic movement in the upper voice. A handwritten number '51' is visible below the first measure.

70
II kcov.
Musical notation for the third system of the first keyboard part. It features a grand staff with treble and bass clefs. The music is primarily chordal, with some melodic movement in the upper voice. A handwritten number '52' is visible below the first measure.

75

Brezsky

75

I kcau.

75

II kcau.

80

Brezsky

80

I kcau.

80

II kcau.

Brass

Handwritten musical notation for the Brass section, featuring complex chordal textures and melodic lines in both staves.

I. Cor.

Handwritten musical notation for the first Cor Anglais part, showing sparse notes and rests.

II. Cor.

Handwritten musical notation for the second Cor Anglais part, showing sparse notes and rests.

Brass

Handwritten musical notation for the Brass section, starting at measure 85, with dense and somewhat chaotic notation.

I. Cor.

Handwritten musical notation for the first Cor Anglais part, starting at measure 85, with sparse notes and rests.

II. Cor.

Handwritten musical notation for the second Cor Anglais part, starting at measure 85, with sparse notes and rests.

Brecheke

90

I kcau.

90

II kcau.

90

Brecheke

95

I kcau.

95

II kcau.

95

Bratseker

Measures 1-3. Key signature: one sharp (F#). Dynamic markings: *f*, *pizz*.

I klaw.

Measures 1-4. Key signature: one sharp (F#). Dynamic marking: *f*.

II klaw.

Measures 1-4. Key signature: one sharp (F#). Dynamic marking: *f*. Circled number: 100.

Bratseker

Measures 4-7. Key signature: one sharp (F#). Dynamic marking: *f*. Circled number: 100.

I klaw.

Measures 4-7. Key signature: one sharp (F#). Dynamic marking: *f*. Circled number: 100.

II klaw.

Measures 4-7. Key signature: one sharp (F#). Dynamic marking: *f*. Circled number: 100.

Bratscher
25
105

I Klav.
105

II Klav.
105

Bratscher
30
Sax

I Klav.
Sax
Sax

II Klav.

110
Britches
Musical notation for the first system, featuring a treble clef and a bass clef. The treble clef part has a melodic line with quarter notes. The bass clef part has a bass line with quarter notes and rests. A red box highlights the number 110.

110
I K. Cav.
Musical notation for the second system, featuring a treble clef and a bass clef. The treble clef part has a melodic line with quarter notes. The bass clef part has a bass line with quarter notes and rests. A red box highlights the number 110.

110
II K. Cav.
Musical notation for the third system, featuring a treble clef and a bass clef. The treble clef part has a melodic line with quarter notes. The bass clef part has a bass line with quarter notes and rests. A red box highlights the number 110.

115
Britches
Allegro vivace
Musical notation for the fourth system, featuring a treble clef and a bass clef. The treble clef part has a melodic line with quarter notes. The bass clef part has a bass line with quarter notes and rests. A red box highlights the number 115. The tempo marking "Allegro vivace" is written above the staff.

115
I K. Cav.
Musical notation for the fifth system, featuring a treble clef and a bass clef. The treble clef part has a melodic line with quarter notes. The bass clef part has a bass line with quarter notes and rests. A red box highlights the number 115.

115
II K. Cav.
Musical notation for the sixth system, featuring a treble clef and a bass clef. The treble clef part has a melodic line with quarter notes. The bass clef part has a bass line with quarter notes and rests. A red box highlights the number 115. The tempo marking "Allegro vivace" is written above the staff. The text "5 keys lines" is written at the bottom right.

120

Brecker

I Kaw.

II Kaw.

Brecker

I Kaw.

II Kaw.

120

120

ff

p

p

p

Handwritten musical notation for the first system, labeled *Brecker*. It consists of two staves with rests.

Handwritten musical notation for the second system, labeled *I Kaw.*. It features a treble clef with a 4/4 time signature, a key signature of one flat, and a dynamic marking of *ff*. The notation includes chords and melodic lines.

Handwritten musical notation for the third system, labeled *II Kaw.*. It features a treble clef and a key signature of one flat. The notation includes complex chordal textures and melodic fragments.

Handwritten musical notation for the fourth system, labeled *Brecker*. It features a treble clef and a key signature of one flat. The notation includes a dynamic marking of *p* and complex chordal textures.

Handwritten musical notation for the fifth system, labeled *I Kaw.*. It features a treble clef and a key signature of one flat. The notation includes a dynamic marking of *p* and melodic lines.

Handwritten musical notation for the sixth system, labeled *II Kaw.*. It features a treble clef and a key signature of one flat. The notation includes a dynamic marking of *p* and melodic lines.

Cembalo

125

I Klav.

125

II Klav.

125

Cembalo

I Klav.

II Klav.

Bruderer

130

I Kcw.

130

II Kcw.

130

Bruderer

135

I Kcw.

135

8va

L. H.

Fine

II Kcw.

135