

115

120

Handwritten musical score for measures 115-120. The score is written on five staves. The first staff contains a melodic line with various notes and accidentals (sharps, flats, naturals). The second staff contains a bass line with notes and accidentals. The third and fourth staves contain notes with stems, some with accidentals. The fifth staff contains notes with stems and accidentals. The notation includes slurs, ties, and dynamic markings such as *ppp* and *pp*. The measure numbers 115 and 120 are boxed in red at the top of the first and second staves respectively.

Handwritten musical score for measures 115-120. This section consists of five empty staves, indicating that the musical notation for these measures is not present on this page.

Handwritten musical score for measures 115-120. This section consists of five empty staves, indicating that the musical notation for these measures is not present on this page.

Handwritten musical score for measures 115-120. The notation is sparse, with notes appearing primarily in the lower staves. It includes notes with stems, accidentals, and dynamic markings such as *ppp* and *pp*. The notation is less dense than in the first section of the page.

125

Handwritten musical score for the first system, consisting of two staves. The top staff begins with a treble clef and a key signature of one flat (B-flat). It contains a melodic line with a slur over the first two measures, followed by a measure with a sharp sign. The bottom staff begins with a bass clef and a key signature of one flat. It contains a melodic line with a slur over the first two measures, followed by a measure with a sharp sign and a flat sign. A large 'X' is drawn across the middle of the system, indicating a correction or deletion. To the right of the 'X', there are additional musical notations, including a treble clef, a key signature of one flat, and various notes and accidentals. Arrows point to specific notes in the bottom staff on the right side.

Handwritten musical score for the second system, consisting of two staves. The top staff begins with a treble clef and a key signature of one flat. It contains a melodic line with a slur over the first two measures, followed by a measure with a sharp sign. The bottom staff begins with a bass clef and a key signature of one flat. It contains a melodic line with a slur over the first two measures, followed by a measure with a sharp sign and a flat sign. A large 'X' is drawn across the middle of the system, indicating a correction or deletion. To the right of the 'X', there are additional musical notations, including a treble clef, a key signature of one flat, and various notes and accidentals.

Two empty musical staves, each with a treble clef on the left and a bass clef on the right. A large 'X' is drawn across the middle of these two staves, indicating they are unused or crossed out.

Handwritten musical score for the third system, consisting of two staves. The top staff begins with a treble clef and a key signature of one flat. It contains a melodic line with a slur over the first two measures, followed by a measure with a sharp sign. The bottom staff begins with a bass clef and a key signature of one flat. It contains a melodic line with a slur over the first two measures, followed by a measure with a sharp sign and a flat sign. A large 'X' is drawn across the middle of the system, indicating a correction or deletion. To the right of the 'X', there are additional musical notations, including a treble clef, a key signature of one flat, and various notes and accidentals.

Handwritten musical score for measures 130-135. The score is written on six staves. Measure 130 is highlighted with a red box. The notation includes various notes, rests, and accidentals. The key signature changes from one flat to two flats between measures 130 and 135. The word "dim." is written above the staff in measure 135.

Handwritten musical score for measures 136-140. The score is written on six staves. The notation is mostly empty staves with some notes and rests at the end of the system.

Handwritten musical score for measures 141-145. The score is written on six staves. The notation is mostly empty staves with some notes and rests at the end of the system.

Handwritten musical score for measures 146-150. The score is written on six staves. The notation includes various notes, rests, and accidentals. The word "dim." is written above the staff in measure 148.

140

Handwritten musical score for the first system. The piano part (left) features a complex chord sequence with various accidentals (sharps, flats, naturals) and a melodic line with slurs. The violin part (right) is mostly rests.

Handwritten musical score for the second system. The piano part (left) has a few notes with accidentals, while the violin part (right) is mostly rests.

Handwritten musical score for the third system. Both the piano and violin parts are mostly rests.

Handwritten musical score for the fourth system. The piano part (left) has a complex melodic line with many notes and accidentals, while the violin part (right) is mostly rests.

Handwritten musical score for the fifth system. The piano part (left) has a few notes with accidentals, while the violin part (right) is mostly rests.

145

150

Handwritten musical score for measures 145-150. The score consists of five staves. The top staff contains a melodic line with notes and rests. The second staff contains a complex rhythmic pattern with many notes. The third, fourth, and fifth staves contain sustained notes with slurs, likely representing a harmonic or bass line. Dynamic markings include *pp* and *ppp*.

Five empty musical staves, likely representing a section of the score that is either blank or has been removed.

Two musical staves. The top staff has some notes and rests, while the bottom staff is mostly empty with some scribbles.

dim

Handwritten musical score for measures 145-150, continuing from the first system. It features a complex melodic line in the top staff and a dense, multi-layered accompaniment in the lower staves, including many notes and rests.

Handwritten musical score for measures 145-150, continuing from the second system. It features a complex melodic line in the top staff and a dense, multi-layered accompaniment in the lower staves, including many notes and rests. Dynamic markings include *ppp* and *pp*.

155

Handwritten musical score for the first system, consisting of five staves. The first staff is in 6/8 time. The second staff is in 2/4 time. The third staff is in 3/4 time and contains the notation "♭ ♯ ♯ ♯ ♯". The fourth staff is in 2/4 time and contains the notation "♭ ♭ ♭ ♭ ♭". The fifth staff is in 3/4 time. The rest of the system consists of empty staves.

Handwritten musical score for the second system, consisting of five staves. The first staff is in 6/8 time. The second staff is in 2/4 time. The third staff is in 2/4 time. The fourth staff is in 3/4 time and contains the notation "f 3/4 ♯". The fifth staff is in 3/4 time and contains the notation "f 3/4 ♯". The rest of the system consists of empty staves.

Handwritten musical score for the third system, consisting of two staves. The first staff is in 6/8 time. The second staff is in 2/4 time. The rest of the system consists of empty staves.

Handwritten musical score for the fourth system, consisting of two staves with complex notation, including many notes and accidentals. The first staff is in 6/8 time and the second staff is in 2/4 time.

Handwritten musical score for the fifth system, consisting of four staves. The first staff is in 6/8 time. The second staff is in 2/4 time. The third staff is in 3/4 time. The fourth staff is in 2/4 time. The rest of the system consists of empty staves.

160

165

Handwritten musical notation for measures 160-165, system 1. The system consists of eight staves. Measures 160-165 are mostly empty, with only a few horizontal lines drawn across the staves.

Handwritten musical notation for measures 160-165, system 2. The system consists of eight staves. Measures 160-165 are mostly empty, with only a few horizontal lines drawn across the staves.

Handwritten musical notation for measures 160-165, system 3. The system consists of two staves. Measures 160-165 are mostly empty, with only a few horizontal lines drawn across the staves.

Handwritten musical notation for measures 160-165, system 4. This system contains a complex musical passage with notes, rests, and accidentals across two staves.

Handwritten musical notation for measures 160-165, system 5. The system consists of eight staves. Measures 160-165 are mostly empty, with only a few horizontal lines drawn across the staves.

170

175

Handwritten musical score for measures 170-175, top system. The system consists of five staves. Measures 170-174 are mostly empty staves with some faint markings. Measure 175 contains handwritten notes and rests. Measure 176 contains a complex melodic line with many notes and accidentals, including a double sharp (x) and a double flat (bb). Measure 177 contains a complex melodic line with many notes and accidentals, including a double sharp (x) and a double flat (bb). Measure 178 contains a complex melodic line with many notes and accidentals, including a double sharp (x) and a double flat (bb). Measure 179 contains a complex melodic line with many notes and accidentals, including a double sharp (x) and a double flat (bb). Measure 180 contains a complex melodic line with many notes and accidentals, including a double sharp (x) and a double flat (bb).

Handwritten musical score for measures 170-175, second system. The system consists of five staves. Measures 170-174 are mostly empty staves with some faint markings. Measure 175 contains handwritten notes and rests. Measure 176 contains a complex melodic line with many notes and accidentals, including a double sharp (x) and a double flat (bb). Measure 177 contains a complex melodic line with many notes and accidentals, including a double sharp (x) and a double flat (bb). Measure 178 contains a complex melodic line with many notes and accidentals, including a double sharp (x) and a double flat (bb). Measure 179 contains a complex melodic line with many notes and accidentals, including a double sharp (x) and a double flat (bb). Measure 180 contains a complex melodic line with many notes and accidentals, including a double sharp (x) and a double flat (bb).

Handwritten musical score for measures 170-175, third system. The system consists of five staves. Measures 170-174 are mostly empty staves with some faint markings. Measure 175 contains handwritten notes and rests. Measure 176 contains a complex melodic line with many notes and accidentals, including a double sharp (x) and a double flat (bb). Measure 177 contains a complex melodic line with many notes and accidentals, including a double sharp (x) and a double flat (bb). Measure 178 contains a complex melodic line with many notes and accidentals, including a double sharp (x) and a double flat (bb). Measure 179 contains a complex melodic line with many notes and accidentals, including a double sharp (x) and a double flat (bb). Measure 180 contains a complex melodic line with many notes and accidentals, including a double sharp (x) and a double flat (bb).

Handwritten musical score for measures 170-175, bottom system. The system consists of five staves. Measures 170-174 are mostly empty staves with some faint markings. Measure 175 contains handwritten notes and rests. Measure 176 contains a complex melodic line with many notes and accidentals, including a double sharp (x) and a double flat (bb). Measure 177 contains a complex melodic line with many notes and accidentals, including a double sharp (x) and a double flat (bb). Measure 178 contains a complex melodic line with many notes and accidentals, including a double sharp (x) and a double flat (bb). Measure 179 contains a complex melodic line with many notes and accidentals, including a double sharp (x) and a double flat (bb). Measure 180 contains a complex melodic line with many notes and accidentals, including a double sharp (x) and a double flat (bb).

190

195

L. Weber

180

185

Handwritten musical score for measures 180-185. The score consists of seven staves. The first two staves have a treble clef and a key signature of one sharp (F#). The remaining five staves have a bass clef. The notation includes various note values, rests, and dynamic markings. The measures are numbered 180 through 185.

Handwritten musical score for measures 180-185, continuing from the previous block. It features seven staves with treble and bass clefs, containing musical notation and rests.

Handwritten musical score for measures 180-185. This section includes a variety of musical notations, including treble and bass clefs, notes, rests, and dynamic markings. The measures are numbered 180 through 185.

Handwritten musical score for measures 180-185. This section includes a variety of musical notations, including treble and bass clefs, notes, rests, and dynamic markings. The measures are numbered 180 through 185.

Handwritten musical score for measures 180-185. This section includes a variety of musical notations, including treble and bass clefs, notes, rests, and dynamic markings. The measures are numbered 180 through 185.

200

205

Musical score for system 200, measures 1-5. It consists of five staves, each containing a whole rest.

Musical score for system 205, measures 1-5. It consists of five staves. Measures 3-5 contain handwritten notes: ppp , $x0$, and $\#0$.

Musical score for system 200, measures 6-10. It consists of five staves, each containing a whole rest.

Musical score for system 205, measures 6-10. It features a complex melodic line with many accidentals and a *rit.* marking above the staff.

Musical score for system 200, measures 11-15. It consists of five staves. Measures 13-15 contain handwritten notes: ppp , $x0$, and $\#0$.

rit.

210

215

Handwritten musical score for measures 210-215, top system. The score consists of six staves. Measures 210-214 are mostly blank with some notes and rests. Measure 215 contains several notes with dynamic markings such as *f* and *ff*. There are also some handwritten annotations and a double bar line at the end of the system.

Handwritten musical score for measures 210-215, middle system. The score consists of six staves. Measures 210-214 are mostly blank. Measure 215 contains notes with dynamic markings such as *ppp* and *pp*. There are also some handwritten annotations and a double bar line at the end of the system.

Handwritten musical score for measures 210-215, bottom system. The score consists of six staves. Measures 210-214 are mostly blank. Measure 215 contains notes with dynamic markings such as *ppp* and *pp*. There are also some handwritten annotations and a double bar line at the end of the system.

220

Handwritten musical score for the first system, consisting of six staves. The first five staves are mostly empty with horizontal lines. The sixth staff contains a treble clef, a 3/4 time signature, and a whole note chord.

Handwritten musical score for the second system, consisting of six staves. Similar to the first system, the first five staves are empty, and the sixth staff has a treble clef, a 3/4 time signature, and a whole note chord.

Handwritten musical score for the third system, consisting of two staves. The top staff has a treble clef, a 3/4 time signature, and a whole note chord. The bottom staff is empty.

Handwritten musical score for the fourth system, consisting of two staves with dense musical notation, including notes, rests, and dynamic markings like "pp".

Handwritten musical score for the fifth system, consisting of six staves. The first five staves are empty, and the sixth staff has a treble clef, a 3/4 time signature, and a whole note chord.

225

Handwritten musical score for the first system, consisting of five staves. Each staff begins with a treble clef and a 3/4 time signature. The notation consists of rests and rhythmic markings (vertical lines) across four measures. The first measure contains a whole rest on the first staff and a half rest on the second. The second measure contains a whole rest on the first staff and a half rest on the second. The third measure contains a whole rest on the first staff and a half rest on the second. The fourth measure contains a whole rest on the first staff and a half rest on the second.

Handwritten musical score for the second system, consisting of five staves. Each staff begins with a treble clef and a 3/4 time signature. The notation consists of rests and rhythmic markings (vertical lines) across four measures. The first measure contains a whole rest on the first staff and a half rest on the second. The second measure contains a whole rest on the first staff and a half rest on the second. The third measure contains a whole rest on the first staff and a half rest on the second. The fourth measure contains a whole rest on the first staff and a half rest on the second.

Handwritten musical score for the third system, consisting of five staves. The first two staves have rests and rhythmic markings. The third staff has a treble clef and a 3/4 time signature. The fourth and fifth staves have rests and rhythmic markings. The central section of the system contains dense musical notation with many notes and rests, spanning across the staves.

Handwritten musical score for the fourth system, consisting of five staves. Each staff begins with a treble clef and a 3/4 time signature. The notation consists of rests and rhythmic markings (vertical lines) across four measures. The first measure contains a whole rest on the first staff and a half rest on the second. The second measure contains a whole rest on the first staff and a half rest on the second. The third measure contains a whole rest on the first staff and a half rest on the second. The fourth measure contains a whole rest on the first staff and a half rest on the second.

230

235

Handwritten musical score for measures 230-235. The first system (measures 230-234) shows rests in all staves. The second system (measures 235-236) shows musical notation with dynamics such as *ff* and *p*, and some notes in the upper staves.

Handwritten musical score for measures 230-235. The first system (measures 230-234) shows rests in all staves. The second system (measures 235-236) shows rhythmic patterns and notes in the upper staves.

Handwritten musical score for measures 230-235. The first system (measures 230-234) shows rests in all staves. The second system (measures 235-236) shows notes in the upper staves.

Handwritten musical score for measures 230-235. A complex passage with many notes and slurs, possibly a transcription of a specific section.

Handwritten musical score for measures 230-235. The first system (measures 230-234) shows rests in all staves. The second system (measures 235-236) shows notes and dynamics such as *pizz* in the upper staves.

240

Handwritten musical score for the first system. It begins with a treble clef and consists of six staves. The notation is primarily rhythmic, using stems and flags to indicate note values. The first three staves appear to be a vocal line, while the last three are accompaniment. The music is organized into measures by vertical bar lines.

Handwritten musical score for the second system. It starts with a treble clef and six staves. The notation includes dynamic markings such as *f* (forte) and *mf* (mezzo-forte). There are melodic lines with notes and rests, as well as some chordal structures. The system continues with rhythmic notation on the lower staves.

Handwritten musical score for the third system. It consists of six staves, all of which are mostly empty, indicating a section of the score where the notes have been omitted or are otherwise unrecorded.

Handwritten musical score for the fourth system. It begins with a treble clef and six staves. This system contains dense melodic and harmonic notation, including many notes, accidentals, and slurs. The notation is more complex than the previous systems, with many notes beamed together.

Handwritten musical score for the fifth system. It starts with a treble clef and six staves. The notation is primarily rhythmic, using stems and flags to indicate note values. The first three staves appear to be a vocal line, while the last three are accompaniment. The system continues with rhythmic notation on the lower staves.

245

250

Handwritten musical score for measures 245-250. The score consists of seven staves. The first five staves are heavily crossed out with diagonal lines. The sixth staff contains some notes and rests. The seventh staff contains a sequence of notes with a fermata. There are some handwritten annotations and a 'p' dynamic marking.

Handwritten musical score for measures 250-255. The score consists of seven staves. The first staff has a few notes and rests. The second staff has some notes and rests. The third staff has some notes and rests. The fourth staff has some notes and rests. The fifth staff has some notes and rests. The sixth staff has some notes and rests. The seventh staff has some notes and rests.

Handwritten musical score for measures 255-260. The score consists of seven staves, all of which are empty.

Handwritten musical score for measures 260-265. The score consists of seven staves. The first two staves have some notes and rests. The third staff has some notes and rests. The fourth staff has some notes and rests. The fifth staff has some notes and rests. The sixth staff has some notes and rests. The seventh staff has some notes and rests.

Handwritten musical score for measures 265-275. The score consists of seven staves. The first two staves have some notes and rests. The third staff has some notes and rests. The fourth staff has some notes and rests. The fifth staff has some notes and rests. The sixth staff has some notes and rests. The seventh staff has some notes and rests. There are some handwritten annotations like 'pizz', 'arco', and 'mi'.

255

Handwritten musical score for the first system. It begins with a treble clef, a key signature of one sharp (F#), and a 4/4 time signature. The score includes a piano introduction with a melodic line and a bass line, followed by a main section with a complex rhythmic pattern. The notation includes various note values, rests, and dynamic markings.

Handwritten musical score for the second system, consisting of several empty staves with a few notes written in the bottom staff. The notation is sparse and appears to be a continuation or a separate part of the piece.

Handwritten musical score for the third system, featuring a treble clef and a key signature of one sharp. The score includes a melodic line with various ornaments and a bass line. The notation is dense and includes many accidentals and dynamic markings.

Handwritten musical score for the fourth system, consisting of several empty staves with a few notes written in the bottom staff. The notation is sparse and appears to be a continuation or a separate part of the piece.

270

Handwritten musical score for the first system, consisting of six staves. The notation includes various notes, rests, and accidentals. The first staff has a treble clef and a 4/4 time signature. The second staff has a bass clef and a 4/4 time signature. The third staff has a bass clef and a 4/4 time signature. The fourth staff has a bass clef and a 4/4 time signature. The fifth staff has a bass clef and a 4/4 time signature. The sixth staff has a bass clef and a 4/4 time signature. The notes are mostly whole and half notes, with some rests.

Handwritten musical score for the second system, consisting of six staves. The notation includes various notes, rests, and accidentals. The first staff has a treble clef and a 4/4 time signature. The second staff has a bass clef and a 4/4 time signature. The third staff has a bass clef and a 4/4 time signature. The fourth staff has a bass clef and a 4/4 time signature. The fifth staff has a bass clef and a 4/4 time signature. The sixth staff has a bass clef and a 4/4 time signature. The notes are mostly whole and half notes, with some rests.

Handwritten musical score for the third system, consisting of six staves. The notation includes various notes, rests, and accidentals. The first staff has a treble clef and a 4/4 time signature. The second staff has a bass clef and a 4/4 time signature. The third staff has a bass clef and a 4/4 time signature. The fourth staff has a bass clef and a 4/4 time signature. The fifth staff has a bass clef and a 4/4 time signature. The sixth staff has a bass clef and a 4/4 time signature. The notes are mostly whole and half notes, with some rests.

Handwritten musical score for the fourth system, consisting of six staves. The notation includes various notes, rests, and accidentals. The first staff has a treble clef and a 4/4 time signature. The second staff has a bass clef and a 4/4 time signature. The third staff has a bass clef and a 4/4 time signature. The fourth staff has a bass clef and a 4/4 time signature. The fifth staff has a bass clef and a 4/4 time signature. The sixth staff has a bass clef and a 4/4 time signature. The notes are mostly whole and half notes, with some rests.

Handwritten musical score for the fifth system, consisting of six staves. The notation includes various notes, rests, and accidentals. The first staff has a treble clef and a 4/4 time signature. The second staff has a bass clef and a 4/4 time signature. The third staff has a bass clef and a 4/4 time signature. The fourth staff has a bass clef and a 4/4 time signature. The fifth staff has a bass clef and a 4/4 time signature. The sixth staff has a bass clef and a 4/4 time signature. The notes are mostly whole and half notes, with some rests.

260

265

(Tempo)

(Tempo)

275

280

Handwritten musical score for measures 275-280. The score is written on ten staves. The first staff contains a melodic line with notes and accidentals. The remaining staves contain a complex accompaniment with many notes, some beamed together, and various accidentals. There are some markings like 'p' (piano) and 'f' (forte) scattered throughout the score.

A section of the musical score consisting of ten empty staves, indicating a section where the music was not written or is a placeholder.

A section of the musical score consisting of two empty staves, indicating a section where the music was not written or is a placeholder.

Handwritten musical score for measures 280-285. The score is written on ten staves. The first staff contains a melodic line with notes and accidentals. The remaining staves contain a complex accompaniment with many notes, some beamed together, and various accidentals. There are some markings like 'mf' (mezzo-forte) and 'f' (forte) scattered throughout the score.

The first system of the manuscript contains six staves of handwritten musical notation. The notation is dense and includes various rhythmic values, accidentals, and dynamic markings such as *ff* and *dim*. The staves are arranged in a single system, with some staves containing rests while others are filled with notes and stems.

This section of the manuscript consists of multiple empty musical staves, arranged in two systems of three staves each. The staves are completely blank, suggesting that the original notation for this section has been removed or that it was a placeholder for a different piece of music.

The second system of the manuscript contains six staves of handwritten musical notation. This section is more complex than the first, featuring a variety of note values, rests, and dynamic markings. The notation is dense and includes various accidentals and dynamic markings such as *ff* and *dim*. The staves are arranged in a single system, with some staves containing rests while others are filled with notes and stems.

Handwritten musical score for the first system. It consists of seven staves. The top staff has a treble clef and contains a melodic line with various accidentals. The lower staves contain complex chordal structures and rhythmic patterns. A circled section of the notation is visible in the middle-right part of the system.

Handwritten musical score for the second system. It features six staves. The notation is primarily rhythmic, with many notes marked with 'x' or similar symbols, possibly indicating percussive sounds or specific articulation. There are some melodic fragments interspersed within the rhythmic notation.

Handwritten musical score for the third system. It includes a section labeled "Tom-Tom" with rhythmic notation and a section labeled "Bachman" with a melodic line. The notation is sparse and focuses on these specific elements.

Handwritten musical score for the fourth system. It shows a melodic line with various accidentals and a section with guitar-like notation, including a fretboard diagram. The notation is dense and detailed.

Handwritten musical score for the fifth system. It consists of six staves with complex notation, including chords and melodic lines. A circled section of the notation is visible in the middle-right part of the system.

295

Handwritten musical score for system 1, measures 1-6. It features a grand staff with treble and bass clefs, and a vocal line with a soprano clef. The notation includes various notes, rests, and accidentals.

Handwritten musical score for system 2, measures 7-12. It features a grand staff with treble and bass clefs, and a vocal line with a soprano clef. The notation includes various notes, rests, and accidentals.

Handwritten musical score for system 3, measures 13-14. It features a grand staff with treble and bass clefs, and a vocal line with a soprano clef. The notation includes various notes, rests, and accidentals.

Handwritten musical score for system 4, measures 15-18. It features a grand staff with treble and bass clefs, and a vocal line with a soprano clef. The notation includes various notes, rests, and accidentals.

Handwritten musical score for system 5, measures 19-24. It features a grand staff with treble and bass clefs, and a vocal line with a soprano clef. The notation includes various notes, rests, and accidentals.

300

305

Handwritten musical score for measures 300-305. The score is written on a grand staff with a treble clef on the upper staff and a bass clef on the lower staff. The piano part consists of chords and arpeggiated figures. The vocal part features a melodic line with various note values and rests. The key signature has one sharp (F#) and the time signature is 4/4.

Handwritten musical score for measures 306-311. This section continues the piece with more complex rhythmic patterns in the vocal line, including sixteenth and thirty-second notes. The piano accompaniment provides harmonic support with chords and moving lines. The notation includes various accidentals and dynamic markings.

A set of empty musical staves, likely representing a section where the music was not written or is a placeholder.

Handwritten musical score for measures 312-317. This section features a melodic flourish in the vocal line, with a series of ascending and descending notes. The piano accompaniment includes chords and arpeggiated figures. The notation includes various accidentals and dynamic markings.

Handwritten musical score for measures 318-323. This section continues the piece with more complex rhythmic patterns in the vocal line, including sixteenth and thirty-second notes. The piano accompaniment provides harmonic support with chords and moving lines. The notation includes various accidentals and dynamic markings.

3-10

Handwritten musical score for the first system. It consists of seven staves. The top two staves are treble clefs, and the bottom five are bass clefs. The music is dense with notes and rests. Dynamic markings include *dim* and *ppp*. A red box highlights the number '3-10' in the upper right corner.

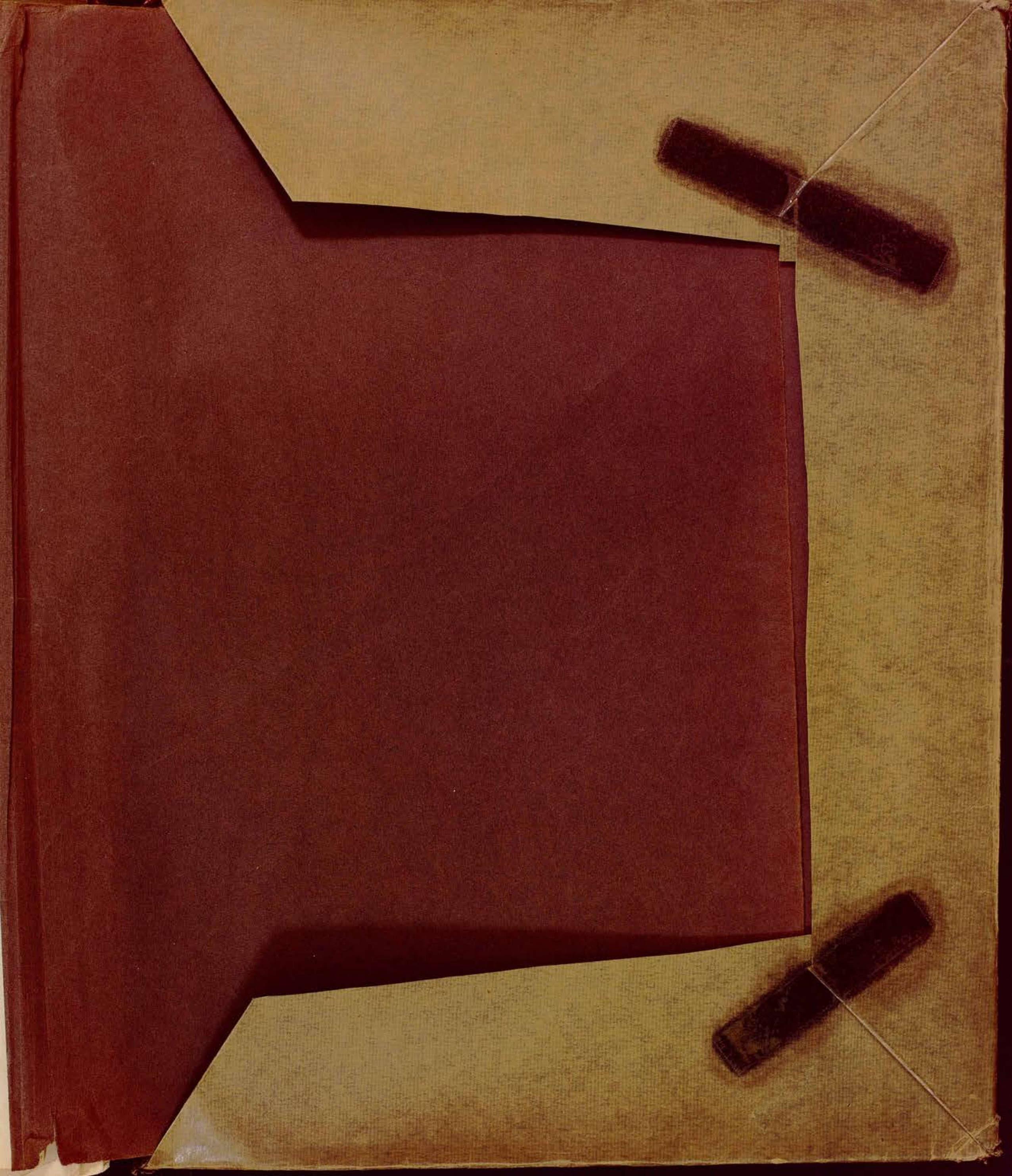
Handwritten musical score for the second system, continuing the complex rhythmic and melodic lines from the first system. It consists of seven staves with similar notation and dynamic markings.

Molto
Andante
Tempo

Handwritten musical score for the third system. It features a prominent 'Tempo' marking and a change in the musical texture. The notation includes various note values and rests.

Handwritten musical score for the fourth system, showing a transition in dynamics and melodic focus. The notation includes various note values and rests.

Handwritten musical score for the fifth system, concluding the page with complex rhythmic patterns and dynamic markings. The notation includes various note values and rests.





Α/Α ΕΡΓΟΥ

17 (1)

ΚΑΤΑΛ.

ΚΑΤΑΛ.

ΑΡΧΕΙΟ Ν. ΣΚΑΛΚΩΤΑ

ΕΡΓΟ

2^ο ΚΟΝΤΣΕΡΤΟ ΓΙΑ ΠΙΑΝΟ ΚΑΙ ΟΡΧΗΣΤΡΑ

Α/Α ΥΠΟΦΑΚΕΛΛΟΥ

1

ΧΕΙΡΟΓΡΑΦΑ

β3, 4.

ΕΝΔΕΙΚΤΙΚΗ ΤΟΠΟΘΕΤΗΣΗ ΧΕΙΡΟΓΡΑΦΩΝ

Αναγωγές για 2 Πιανα...

ΚΑΤΩ ΠΛΕΥΡΑ ΧΕΙΡΟΓΡΑΦΩΝ

ΕΞΩ

Α/Α ΦΑΚΕΛΛΟΥ

1

ΚΑΤΑΛ.

ΚΑΤΑΛ.

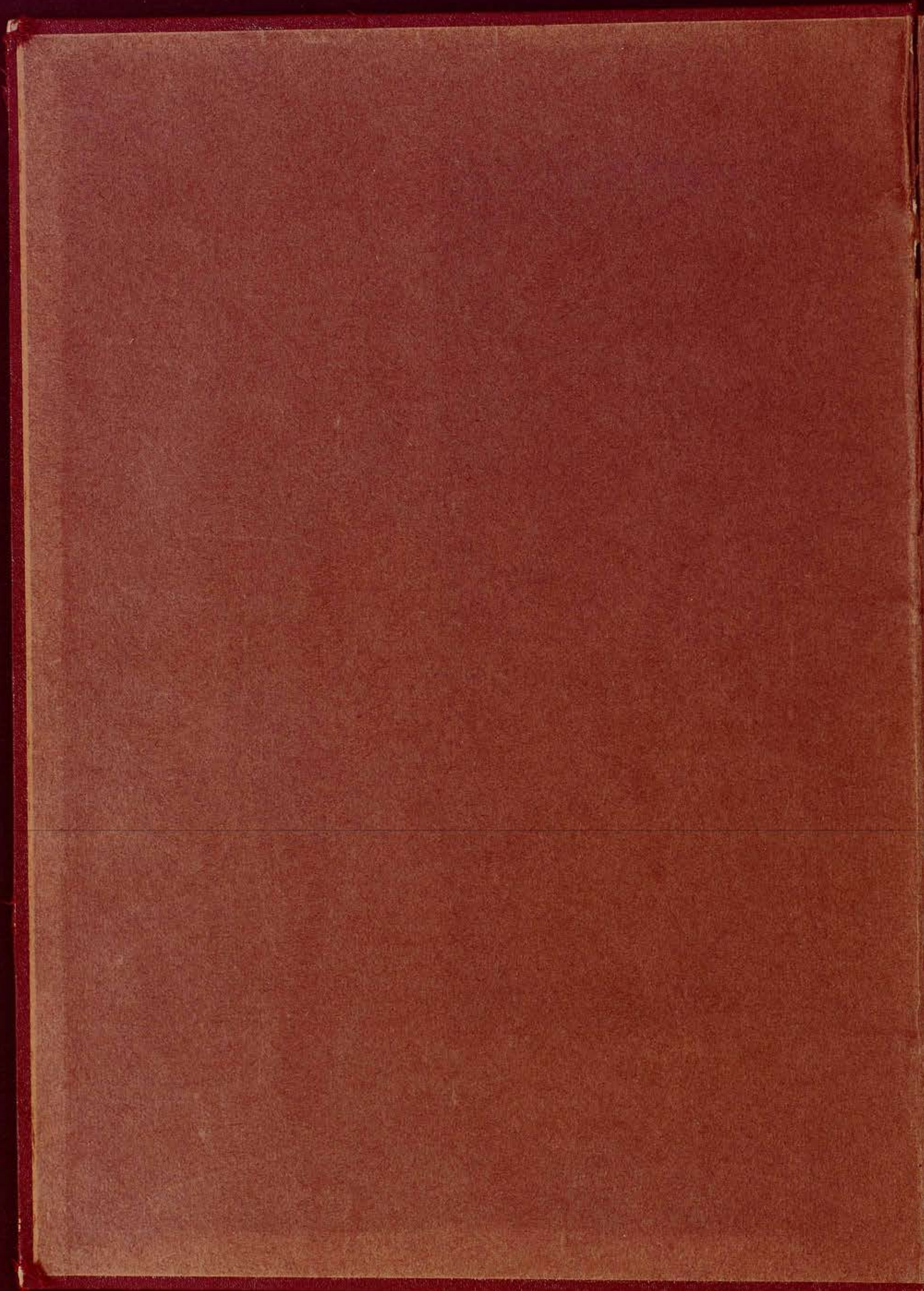
ΚΑΤΩ

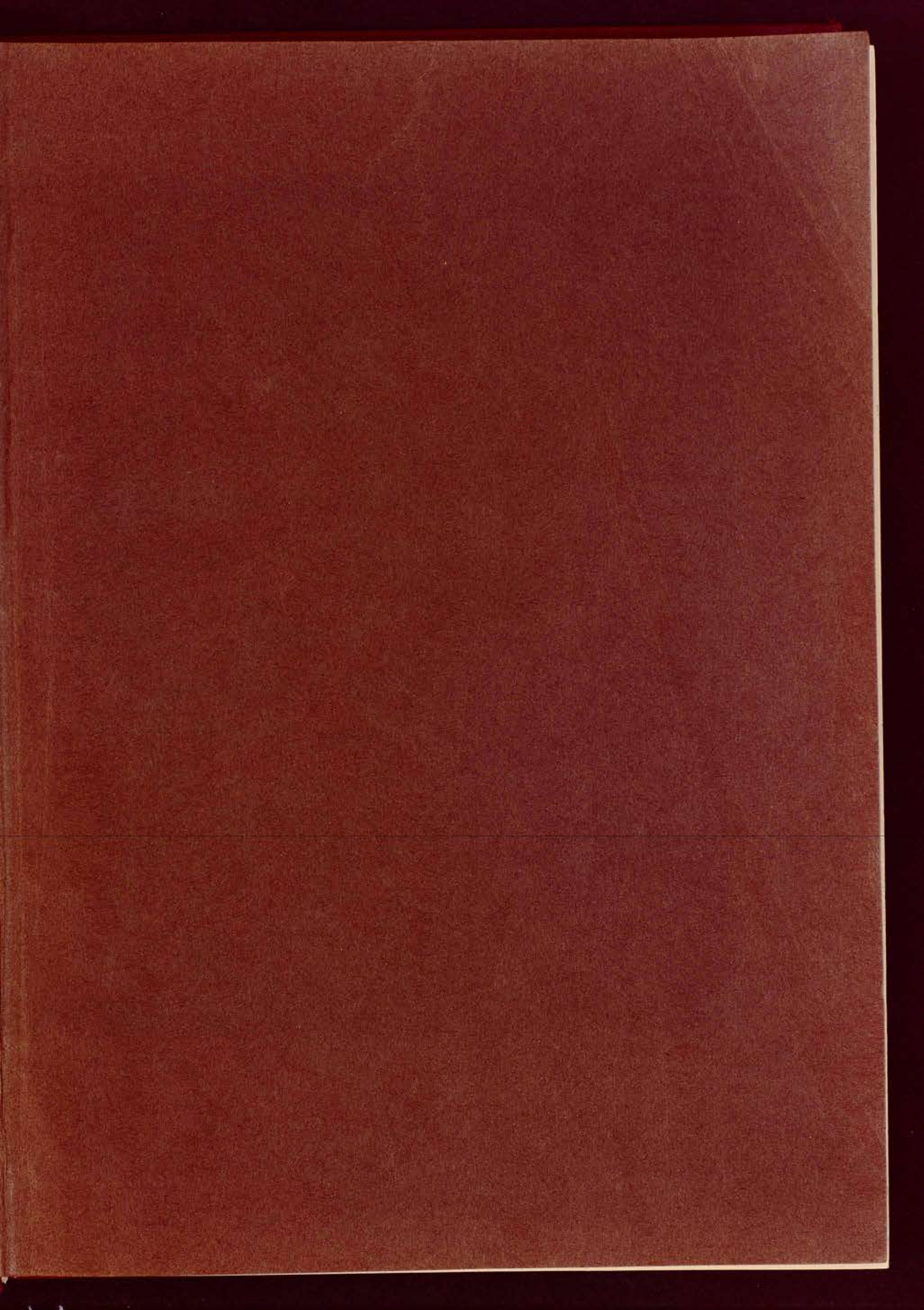
ΥΠΟΔ.

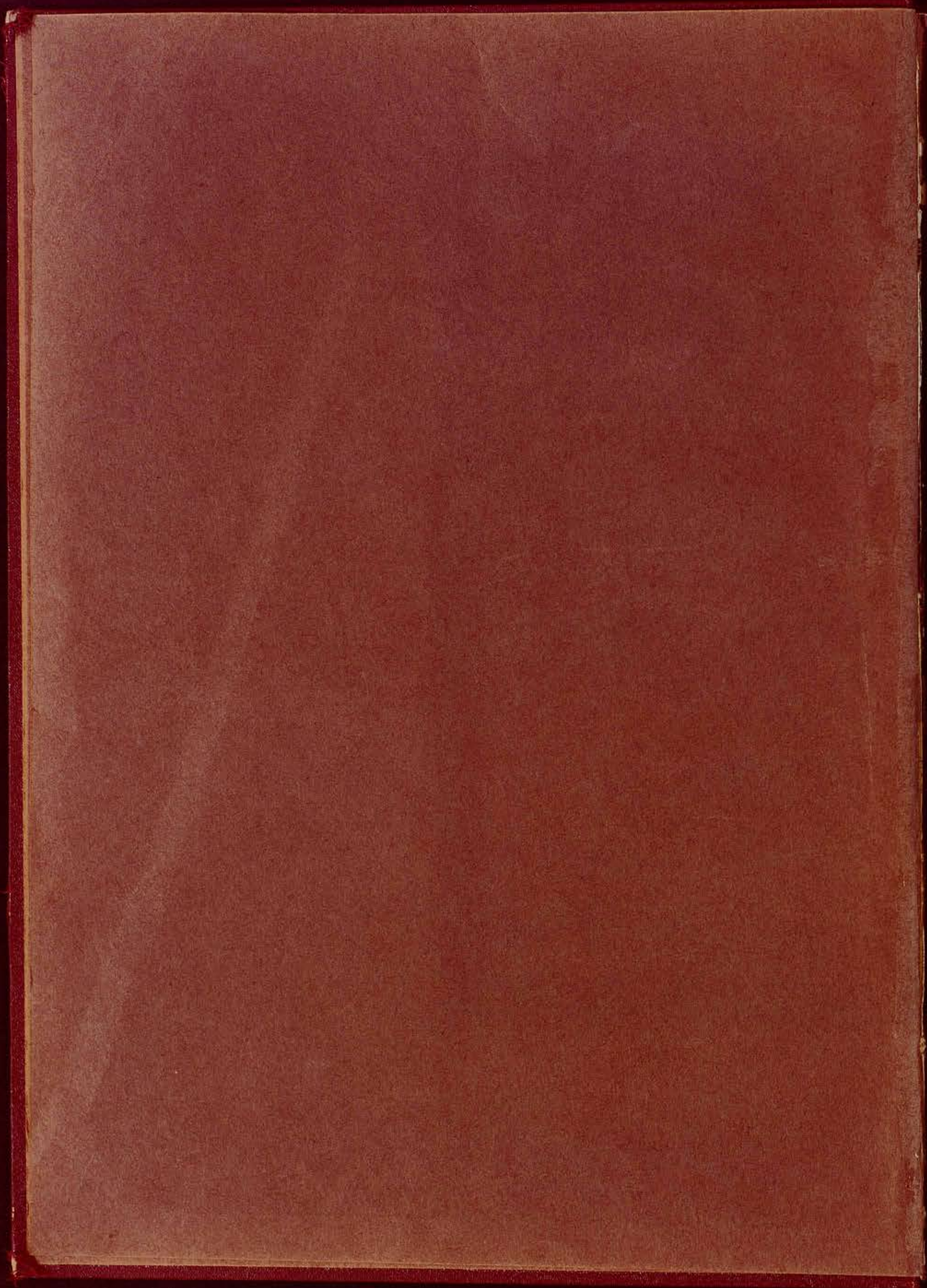


B

Ν. ΕΚΚΑΛΕΣΤΑΣ ΔΕΤΤΕΓΟ ΚΟΝΤΣΕΡΤΟ ΓΙΑ ΠΙΑΝΟ & ΟΡΧΗΣΤΡΑ







PIANO

ΔΕΥΤΕΡΟ

ΚΟΝΤΣΕΡΤΟ ΓΙΑ ΠΙΑΝΟ ΚΑΙ ΟΡΧΗΣΤΡΑ

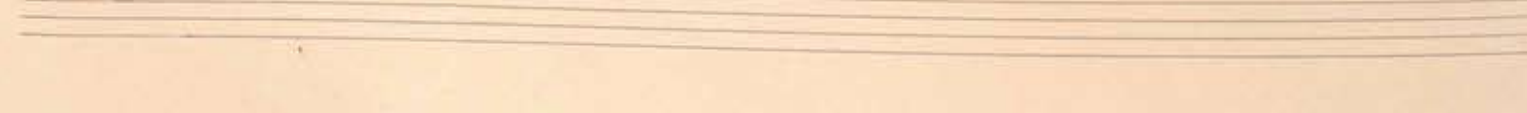
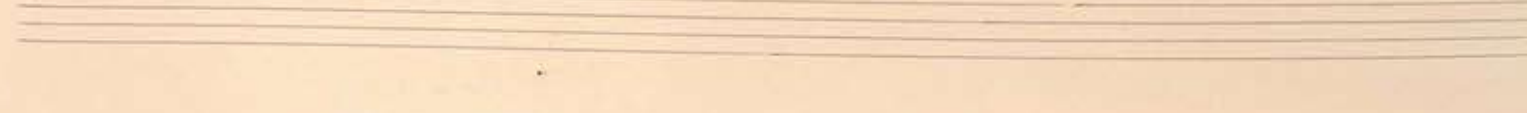
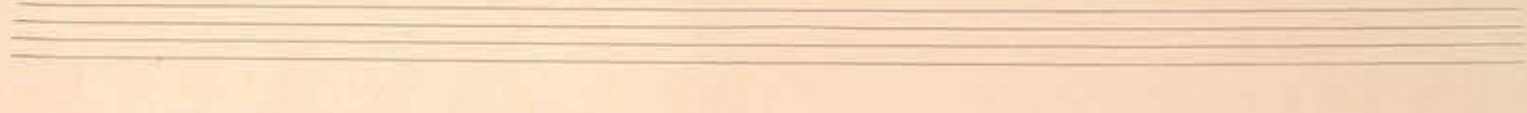
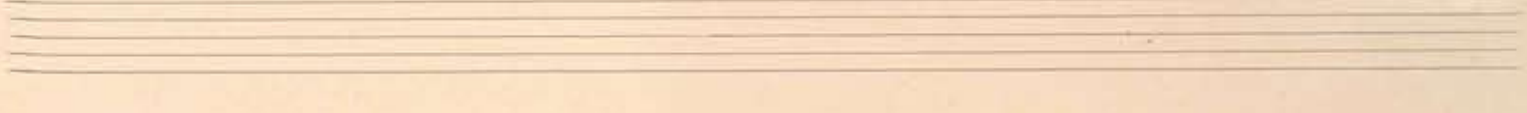
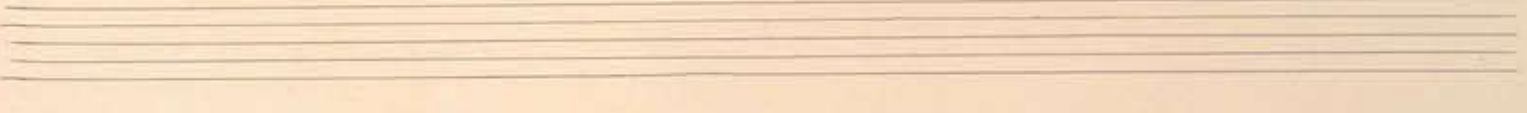
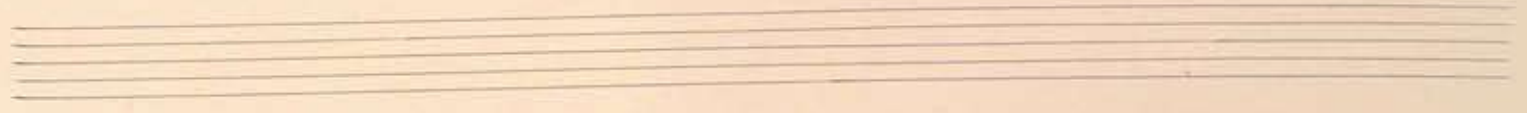
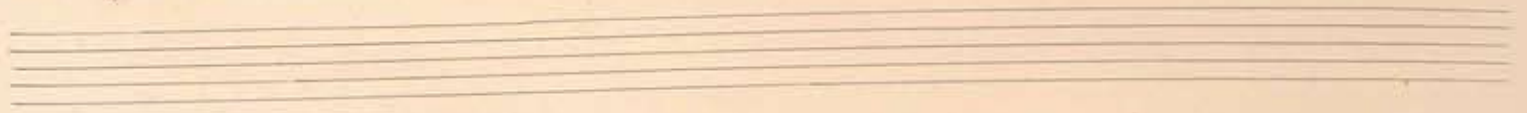
ZWEITES

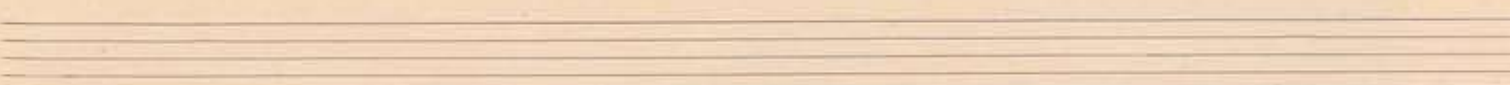
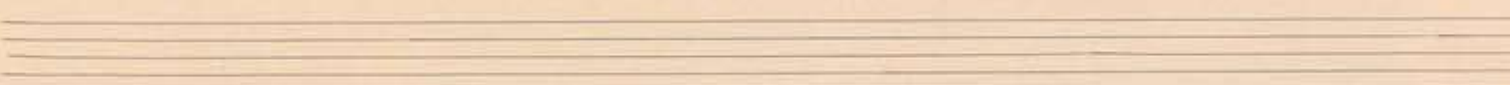
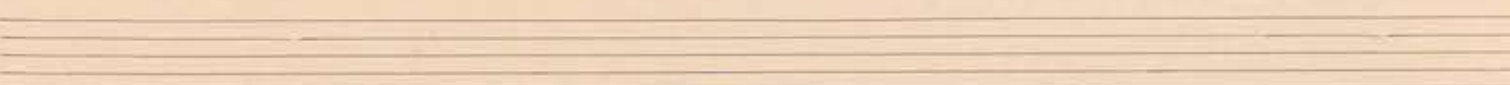
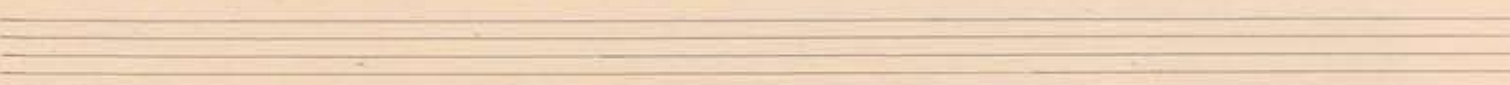
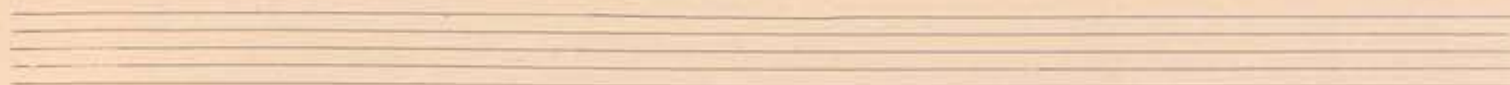
KLAVIERKONZERT MIT ORCHESTER

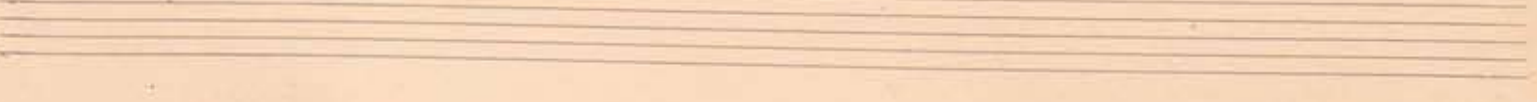
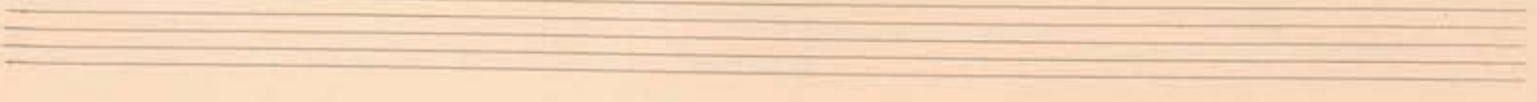
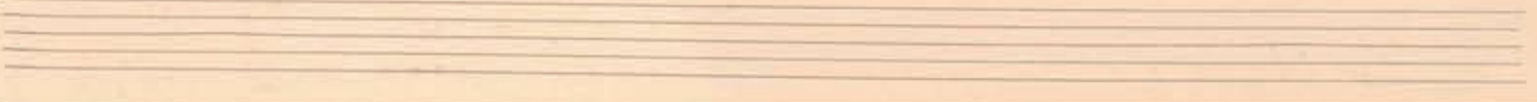
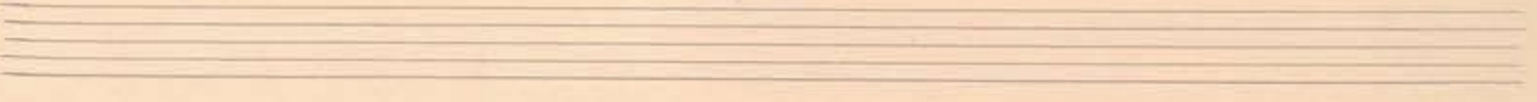
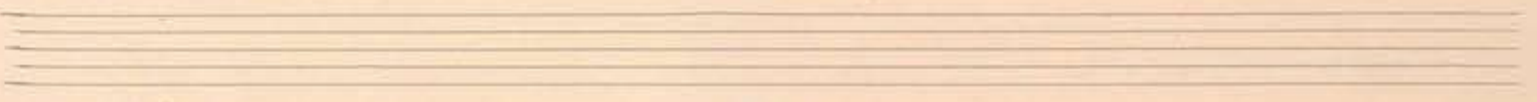
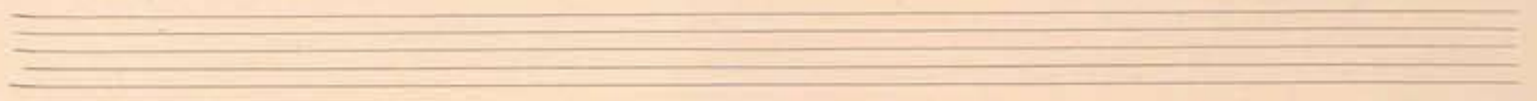
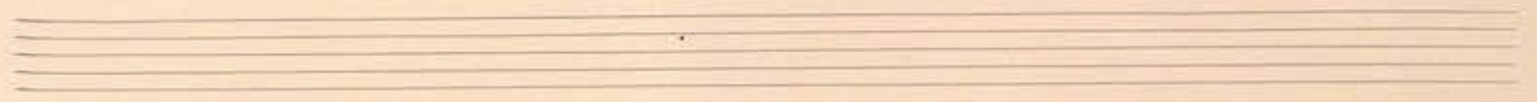
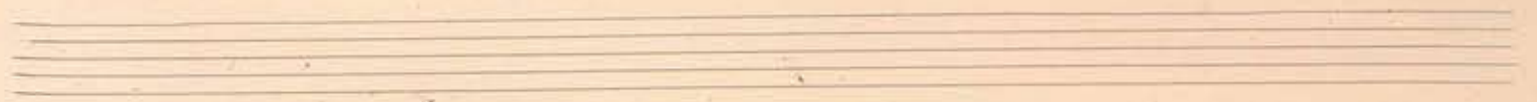
N. ΣΚΑΛΚΩΤΑΣ

N. ΣΚΑΛΚΩΤΑΣ
ΑΘΗΝΑΙ

α17 β4







Πρώτο κλαβιέρ

Πρώτο Κοντσέρτο για Πρώτο και δεύτερο

Zweites Klavier-Konzert mit Orchester

N. Scapuzza

N. ΣΚΑΠΟΥΖΑΣ
ΑΘΗΝΑΙ

N. ΣΥΜΑΡΧΤΑΣ
ΑΘΗΝΑΙ

ΠΡΩΤΟ ΜΕΡΟΣ

ERSTER SATZ

Allegromolto vivace

Handwritten musical score for the first system. It consists of three staves: Treble, Alto, and Bass. The Treble staff begins with a treble clef, a key signature of one flat (B-flat), and a 4/4 time signature. The music is marked with a forte 'f' dynamic. The Alto staff begins with an alto clef and contains complex chordal textures with triplets. The Bass staff begins with a bass clef and contains complex rhythmic patterns with triplets. The system concludes with a fermata over the final notes.

Empty musical staves for the first system, showing treble and bass clefs and a 4/4 time signature.

5

Handwritten musical score for the second system. It consists of three staves: Treble, Alto, and Bass. The Treble staff begins with a treble clef, a key signature of one flat (B-flat), and a 4/4 time signature. The music is marked with a piano 'p' dynamic. The Alto staff begins with an alto clef and contains complex chordal textures with triplets. The Bass staff begins with a bass clef and contains complex rhythmic patterns with triplets. The system concludes with a fermata over the final notes.

Empty musical staves for the second system, showing treble and bass clefs and a 4/4 time signature.

10

2/

15

Tempo I

The first system of the handwritten musical score consists of three staves. The top staff is in treble clef and contains complex chordal textures with many accidentals (sharps and flats) and some triplets. The middle staff is also in treble clef and features a melodic line with various note values and accidentals. The bottom staff is in bass clef and contains a few notes, including a whole note and a half note, with some accidentals. The system concludes with a double bar line.

The second system of the handwritten musical score consists of two empty staves, one in treble clef and one in bass clef, with no musical notation present.

The third system of the handwritten musical score consists of two empty staves, one in treble clef and one in bass clef, with no musical notation present.

Tempo

The fourth system of the handwritten musical score consists of three staves. The top staff is in treble clef and begins with a melodic line, followed by a section marked 'rit.' (ritardando) indicated by a dashed line. The middle staff is in treble clef and contains a complex melodic line with many accidentals. The bottom staff is in bass clef and contains a few notes, including a whole note and a half note, with some accidentals. The system concludes with a double bar line.

The fifth system of the handwritten musical score consists of two empty staves, one in treble clef and one in bass clef, with no musical notation present.

The sixth system of the handwritten musical score consists of two empty staves, one in treble clef and one in bass clef, with no musical notation present.

25

4)

Handwritten musical score for exercise 25, consisting of three staves. The first staff is in treble clef with a key signature of one flat (B-flat) and a common time signature. It contains a sequence of notes with various rhythmic values and accidentals. The second staff is in bass clef with a key signature of one flat and a common time signature, mirroring the first staff. The third staff is in bass clef with a key signature of one flat and a common time signature, featuring more complex rhythmic patterns and some slurs. Below the three staves are four empty staves for practice.

30

Handwritten musical score for exercise 30, consisting of three staves. The first staff is in treble clef with a key signature of one flat (B-flat) and a common time signature. It contains a sequence of notes with various rhythmic values and accidentals. The second staff is in bass clef with a key signature of one flat and a common time signature, mirroring the first staff. The third staff is in bass clef with a key signature of one flat and a common time signature, featuring more complex rhythmic patterns and some slurs. Below the three staves are four empty staves for practice.

Handwritten musical score for the first system. It consists of three staves: treble, alto, and bass. The treble staff contains a complex melodic line with many beamed notes and rests. The alto staff contains a series of chords and some melodic fragments. The bass staff contains a few notes and rests. There are various musical notations including accidentals, slurs, and dynamic markings like 'p' and 'f'.

Two empty musical staves, one in treble clef and one in bass clef, with no notes or markings.

Or

Handwritten musical score for the second system. It consists of three staves: treble, alto, and bass. The treble staff contains a complex melodic line with many beamed notes and rests. The alto staff contains a series of chords and some melodic fragments. The bass staff contains a few notes and rests. There are various musical notations including accidentals, slurs, and dynamic markings like 'p' and 'f'.

Two empty musical staves, one in treble clef and one in bass clef, with no notes or markings.

Two empty musical staves, one in treble clef and one in bass clef, with no notes or markings.

Handwritten musical score for the first system, consisting of three staves. The top staff has a treble clef and a key signature of one sharp (F#). The middle and bottom staves have bass clefs. The music includes various notes, rests, and dynamic markings like 'f' and 'p'.

25

Handwritten musical score for the second system, consisting of three staves. The top staff has a treble clef and a key signature of one flat (Bb). The middle and bottom staves have bass clefs. The music includes various notes, rests, and dynamic markings like 'f' and 'p'.

A set of empty musical staves at the bottom of the page.

50

Handwritten musical score for exercise 50, measures 1-4. The score is written on three staves. The top staff is in treble clef, the middle in alto clef, and the bottom in bass clef. The key signature has one flat (B-flat). The first measure contains a whole note chord in the top staff and a half note in the middle staff. The second measure has a half note in the top staff and a half note in the middle staff. The third measure has a half note in the top staff and a half note in the middle staff. The fourth measure has a half note in the top staff and a half note in the middle staff. There are various annotations including 'f' and 'p' dynamics, and a 'pizz' marking in the bottom staff.

Handwritten musical score for exercise 50, measures 5-8. The score is written on two staves, both in treble clef. The key signature has one flat (B-flat). The first measure is a whole rest. The second measure is a whole rest. The third measure is a whole rest. The fourth measure contains a half note chord in the top staff and a half note in the bottom staff. There are various annotations including 'f' and 'p' dynamics, and a 'pizz' marking in the bottom staff.

55

Handwritten musical score for exercise 55, measures 1-8. The score is written on four staves. The top two staves are in treble clef, and the bottom two are in bass clef. The key signature has one flat (B-flat). The first measure contains a whole note chord in the top staff and a half note in the bottom staff. The second measure has a half note in the top staff and a half note in the bottom staff. The third measure has a half note in the top staff and a half note in the bottom staff. The fourth measure has a half note in the top staff and a half note in the bottom staff. The fifth measure has a half note in the top staff and a half note in the bottom staff. The sixth measure has a half note in the top staff and a half note in the bottom staff. The seventh measure has a half note in the top staff and a half note in the bottom staff. The eighth measure has a half note in the top staff and a half note in the bottom staff. There are various annotations including 'pizz' and 'f' dynamics.

Handwritten musical notation for the first system, consisting of three staves. The top staff has a treble clef and a key signature of one sharp (F#). The middle staff has a treble clef. The bottom staff has a bass clef. The notation includes various chords, some with 'y' markings, and melodic lines with slurs and accents. A 'biss' marking is present in the bottom staff.

Handwritten musical notation for the second system, consisting of two staves. The top staff has a treble clef and a key signature of one sharp (F#). The bottom staff has a bass clef. The notation is dense with chords and melodic lines, including slurs and accents. A 'thema' marking is present in the bottom staff.

60

Handwritten musical notation for the third system, consisting of three staves. The top staff has a treble clef and a key signature of one sharp (F#). The middle staff has a treble clef. The bottom staff has a bass clef. The notation includes chords and melodic lines with slurs. A large handwritten 'H' is written across the bottom staff.

Handwritten musical notation for the fourth system, consisting of two staves. The top staff has a treble clef and a key signature of one sharp (F#). The bottom staff has a bass clef. The notation includes chords and melodic lines with slurs and accents.

Empty musical staves at the bottom of the page.

65

Handwritten musical notation for exercise 65, consisting of three staves. The first staff is in treble clef with a key signature of one flat and a 4/4 time signature. The second and third staves are in bass clef. The notation includes various rhythmic values, accidentals, and dynamic markings.

Handwritten musical notation for exercise 65, consisting of two staves. The first staff is in treble clef and the second is in bass clef. This section features more complex rhythmic patterns and dense chordal textures.

70

Handwritten musical notation for exercise 70, consisting of three staves. The first staff is in treble clef with a key signature of two sharps. The second and third staves are in bass clef. The notation includes rests and rhythmic patterns.

Handwritten musical notation for exercise 70, consisting of two staves. The first staff is in treble clef and the second is in bass clef. This section features complex rhythmic patterns and dense chordal textures.

Handwritten musical notation for the first system. The top staff is in treble clef with a key signature of one sharp (F#) and a 4/4 time signature. It contains several measures of music, including a long rest in the second measure. The bottom staff is in bass clef and contains chords and some melodic fragments. The notation is somewhat sketchy and includes various accidentals and clef changes.

Handwritten musical notation for the second system. The top staff continues the melody from the first system, featuring eighth and sixteenth notes. The bottom staff provides harmonic support with chords and bass lines. There are some annotations like 'L.H.' above the top staff in the final measure.

75

Handwritten musical notation for the third system. The top staff has several measures with rests, followed by a few notes in the final measure. The bottom staff contains chords and rests, with some melodic lines in the second and third measures.

Handwritten musical notation for the fourth system. The top staff has a more active melody with eighth and sixteenth notes, including a triplet. The bottom staff has a corresponding bass line with chords and eighth notes. The notation is more detailed and includes various musical ornaments and dynamics.

Two empty musical staves at the bottom of the page, consisting of five lines each.

80

Three empty musical staves (treble, alto, and bass clefs) for measures 80, 81, and 82. A large handwritten '2' is written across the staves in the third measure.

Handwritten musical notation for measures 80-82. Measure 80 is enclosed in a dashed box and labeled '800'. The notation includes complex chords and melodic lines in treble and bass clefs. A large handwritten '2' is written across the staves in the third measure.

85

Handwritten musical notation for measures 85-88. The notation includes complex chords and melodic lines in treble and bass clefs. A large handwritten '2' is written across the staves in the first measure. An arrow points from the first measure to the second measure.