

ΚΑΙΜΟΚΟΝΤΟΡΟΣ ΠΟΛΚΑ. ^K

LIMOKONDOROS POLKA.

Introduction.

Z. Veloudios.

Musical notation for the Introduction section, featuring a treble and bass staff with a 2/4 time signature and a mezzo-forte (mf) dynamic marking.

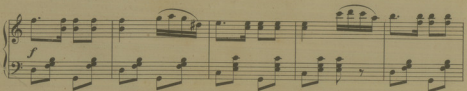
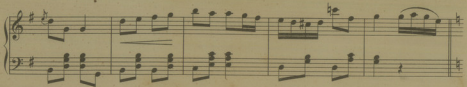
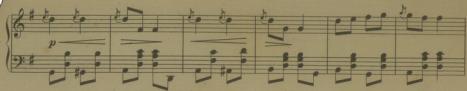
Polka.

Musical notation for the first system of the Polka section, featuring a treble and bass staff with a 2/4 time signature and a forte (f) dynamic marking.

Musical notation for the second system of the Polka section, featuring a treble and bass staff with a 2/4 time signature.

Musical notation for the third system of the Polka section, featuring a treble and bass staff with a 2/4 time signature.

Musical notation for the fourth system of the Polka section, featuring a treble and bass staff with a 2/4 time signature.



Αὐτὸ θεὸν ἡρώδην καὶ πω Πάππη Κυρία

καὶ οὐτε δεῦτε Παλιτιποῦ

καὶ ἔγ μου οὐ καὶ Εἰς τὸ

τέσσερα ἐπιθυμοῦντες ἡρώδην καὶ πω καὶ

ἐξουσίαν σου ἐπιθυμοῦντες ἡρώδην καὶ πω καὶ πω