

8

ΜΕ ΤΟΣΑ ΦΥΛΛΑ.

Handwritten musical score for the first system. It consists of two staves: a treble clef staff and a bass clef staff. The key signature is two sharps (F# and C#), and the time signature is 2/4. The tempo is marked as  $\text{♩} = 104$ . The treble staff contains a series of chords, and the bass staff contains a corresponding bass line. The music is in a simple harmonic style.

Handwritten musical score for the second system, including lyrics. It consists of two staves: a treble clef staff and a bass clef staff. The key signature is two sharps (F# and C#), and the time signature is 2/4. The tempo is marked as  $\text{♩} = 104$ . The lyrics are written below the treble staff. The music continues with chords and a bass line.

ME τόσα φύλλα σου γιόρα  
 τόσα φύλλα σου γιόρα

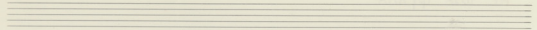
ΜΕ ΤΟΣΑ ΦΥΛΛΑ

7 5 2

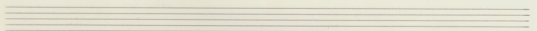
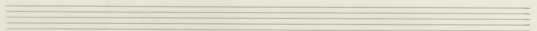
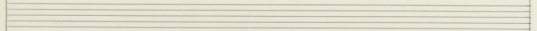
υη λιος κα λη τε ου πα ρα υος  
 λαρ σε ο - ου πα ρα υος

2 2

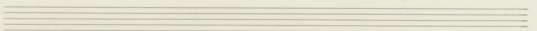
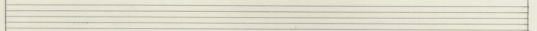
με και του ρος σο ci δε



pa uai aē voi pēs zo xō -



ka uai zoō zoī pēs za -



ΜΕ ΤΟΣΑ ΦΥΛΛΑ

Handwritten musical score for the first system. The vocal line is in G major (one sharp) and 2/4 time. The lyrics are: σι δε πα υαι υβι ραι πει ρο -

Handwritten musical score for the second system. The vocal line continues with the lyrics: χω - μα Σω Παι σου

*psalm*

Handwritten musical notation for the first system, featuring a vocal line with lyrics: *vā vai θā an pā voui oi uap āā Yēs*. The notation includes a treble clef, a key signature of one sharp (F#), and a common time signature (C). The lyrics are written below the notes.

Handwritten musical notation for the second system, including piano accompaniment for the first system. It features a treble clef with chords and a bass clef with a simple bass line. The key signature remains one sharp (F#).

Handwritten musical notation for the third system, starting with a vocal line. It is divided into two sections: *I VOLTA* and *II VOLTA.* The lyrics for the second section are: *Aū zō zō Xw - pa*. The notation includes a treble clef, a key signature of one sharp (F#), and a common time signature (C). There are some handwritten annotations above the notes, including the number '10' and a circled '9'.

Handwritten musical notation for the fourth system, including piano accompaniment for the third system. It features a treble clef with chords and a bass clef with a simple bass line. The key signature remains one sharp (F#).

ΜΕ ΤΟΣΑ ΦΥΛΛΑ

I VOLTA

Ε να δι νό σου και δι νό μας αὐ

A musical staff in G major (one sharp) with a vocal line. The lyrics are written below the notes. The staff ends with a double bar line and repeat dots.

I VOLTA

A piano accompaniment for the first system, consisting of two staves. The right hand plays chords, and the left hand plays a simple bass line. The system ends with a double bar line and repeat dots.

11

A musical staff in G major with a triplet of notes. The notes are G4, A4, and B4. The staff ends with a double bar line and repeat dots.

3

A piano accompaniment for the second system, consisting of two staves. The right hand plays chords with triplet markings (3) above them. The left hand plays a bass line with triplet markings (3) below it. The system ends with a double bar line and repeat dots.

Handwritten musical score for page 7, measures 1-4. The score is written on two staves (treble and bass clefs) in the key of D major (one sharp). The first staff contains whole rests for all four measures. The second staff contains chords for all four measures. The first two measures have two chords each, and the last two measures have three chords each. The chords are marked with a '3' above them, indicating a triplet. A handwritten 'r' is written above the second measure of the second staff. A handwritten 'd' is written above the first measure of the first staff.

Two empty musical staves, one for the treble clef and one for the bass clef.

Handwritten musical score for page 7, measures 5-8. The score is written on two staves (treble and bass clefs) in the key of D major (one sharp). The first staff contains whole rests for all four measures. The second staff contains chords for all four measures. The first two measures have two chords each, and the last two measures have three chords each. The chords are marked with a '3' above them, indicating a triplet. A handwritten 'r' is written above the second measure of the second staff. A handwritten 'd' is written above the first measure of the first staff.

ΜΕ ΤΟΣΑ ΦΥΛΛΑ

$\text{♩} = 60$

Κα ζωαί'λο Χω μα πρσ σ'α σ'αυρω πρσ να

$\text{♩} = 60$

ΑΡΓΑ

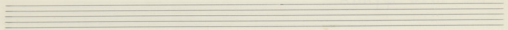
$\text{♩} = 60$

Χε πια τους Ηρα - τω νε εις Καρ ωα νας τω σ'χοι

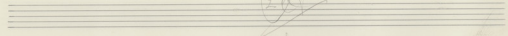
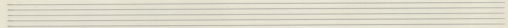
$\text{♩} = 60$

4/4

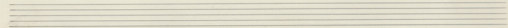




vi. Trep mÉ vou ve zuv ò pa Trep



mÉ - - - vou va em pa vou zuv à



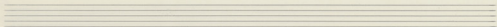


17

Handwritten musical score for measures 17-18. The top staff is a vocal line in G-flat major, 4/4 time. The lyrics are: "va - - - - - cia om. Tou zo zo Xw pa". The piano accompaniment consists of two staves with chords and bass notes.

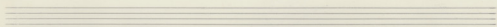
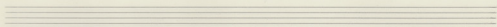
18

Handwritten musical score for measures 18-21. The top staff is a vocal line in G-flat major, 3/4 time. The lyrics are: "Ei vai di ud - pas vai di ud - - -". The piano accompaniment consists of two staves with chords and bass notes.



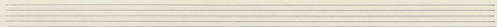
Musical notation for the first system, featuring a vocal line in G major with lyrics: "Aer p'oo p'ei ua veis va pas zo".

Accompanying piano notation for the first system, including a treble clef with a key signature change to G major and a bass clef.

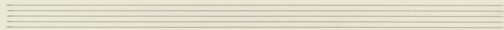


Musical notation for the second system, featuring a vocal line in G major with lyrics: "Ta per Aer p'oo p'ei ua veis va pas zo".

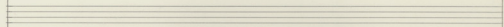
Accompanying piano notation for the second system, including a treble clef with a key signature change to G major and a bass clef.



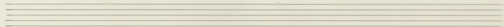
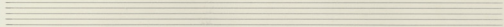
20



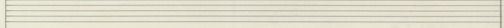
Handwritten musical notation in treble clef, 3/4 time, key of B-flat. The lyrics are: Πά ρει νῆν ἴσο πῦ μα νῆς. ναί μὰς ζῶ



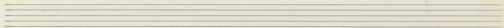
Handwritten musical notation in bass clef, 3/4 time, key of B-flat. The notation consists of chords marked with # and + symbols.

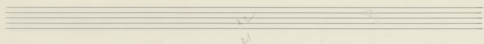


Handwritten musical notation in treble clef, 3/4 time, key of B-flat. The lyrics are: Πά ρει Σὼ Πατρὸς τοῦ ναί νῆ. A circled annotation "ΓΟΡΓΑ" is placed above the staff, and a tempo marking "♩ = 104" is present.



Handwritten musical notation in bass clef, 3/4 time, key of B-flat. The notation consists of chords marked with # and + symbols. A circled annotation "ΓΟΡΓΑ" is placed above the staff, and another circled annotation "ΓΟΡΓΑ" is placed below the staff. A tempo marking "♩ = 104" is present.

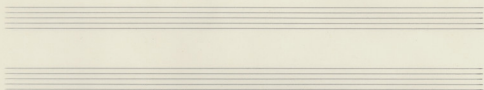




I VOLTA

θα εν πα υουρ οι καρ αα YES

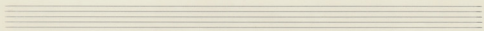
I VOLTA



II VOLTA

πα υες αα ρο ρο χω - μα

II VOLTA



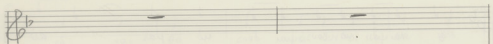
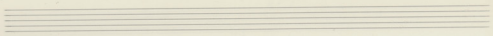
20  
23 I VOLTA

èi vai di ué zous vai di ué pas ad

I VOLTA.

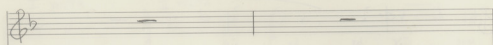
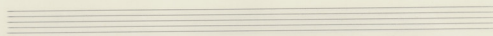
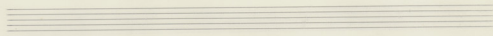
II VOLTA

II VOLTA.

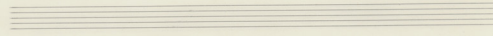


3 3

3 3



rit-



Handwritten musical score on page 16 of manuscript 55. The page features ten staves. The first three staves contain handwritten notation. The first staff has a treble clef and a flat key signature. The second staff has a treble clef, a flat key signature, and a series of vertical lines representing notes. The third staff has a bass clef, a flat key signature, and a series of vertical lines representing notes. A large bracket on the left side of the second and third staves groups them together. Above the second staff, the number '26' is written and underlined. The remaining seven staves are empty.