

7

ΚΑΙ ΤΩΡΑ ΤΙΣ ΚΛΕΙΔΩΣΑΝΕ

$\text{♩} = 50$

Kai zw pa ws tger

dw sa ve zw top ra pas Tap

ΚΑΙ ΤΩΡΑ ΠΡΟΣ ΚΛΕΙΘΡΩΣΑΝΕ

2

Handwritten musical score for the first system. It consists of three staves: a vocal line in G major (one sharp) and two guitar accompaniment staves. The vocal line begins with the lyrics "ωὐὲ γὰρ παρ." and "Τῶς -". The guitar accompaniment features a mix of chords and melodic lines, with a circled treble clef and a circled "2" above the second measure of the guitar part.

8

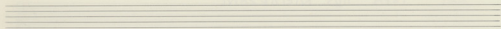
Handwritten musical score for the second system, continuing from the first. It also consists of three staves: a vocal line in G major and two guitar accompaniment staves. The vocal line continues with the lyrics "γὶγνῆσθε ὡς ἄνθρωποι" and "ἡὰν - ἰδοὺ οὐρανοῦ". The guitar accompaniment continues with various chords and melodic fragments.



ΚΑΙ ΤΩΡΑ ΠΟΣ ΚΛΕΙΘΡΩΣΑΝΕ

Handwritten musical score for the first system. It consists of three staves. The top staff is a vocal line in G major (one sharp) and 4/4 time, with lyrics: "Epi sou zaou phi sou". Above the first measure, there is a handwritten "10". The middle staff shows guitar chords, and the bottom staff shows bass guitar chords, including a low E string chord marked "mi".

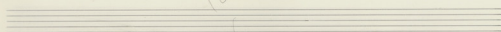
Handwritten musical score for the second system. It consists of three staves. The top staff is a vocal line in G major (one sharp) and 4/4 time, with lyrics: "Ka zw aō - zō xō - pa ω". There are triplets of eighth notes over "aō - zō" and "xō - pa". The middle staff shows guitar chords, and the bottom staff shows bass guitar chords, including a low E string chord marked "mi".



Musical notation for the first system, top staff. Key signature: one sharp (F#). Time signature: 3/4. Notes:  $\text{d}^{\flat}$ ,  $\text{d}^{\flat}$ ,  $\text{d}^{\flat}$ ,  $\text{d}^{\flat}$ ,  $\text{d}^{\flat}$ ,  $\text{d}^{\flat}$ ,  $\text{d}^{\flat}$ ,  $\text{d}^{\flat}$ ,  $\text{d}^{\flat}$ ,  $\text{d}^{\flat}$ ,  $\text{d}^{\flat}$ ,  $\text{d}^{\flat}$ . A fermata is placed over the final note.

Musical notation for the first system, middle staff. Key signature: one sharp (F#). Time signature: 3/4. Chords:  $\text{d}^{\flat}$ ,  $\text{d}^{\flat}$ ,  $\text{d}^{\flat}$ ,  $\text{d}^{\flat}$ ,  $\text{d}^{\flat}$ ,  $\text{d}^{\flat}$ ,  $\text{d}^{\flat}$ ,  $\text{d}^{\flat}$ ,  $\text{d}^{\flat}$ ,  $\text{d}^{\flat}$ ,  $\text{d}^{\flat}$ ,  $\text{d}^{\flat}$ .

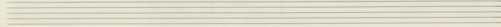
Musical notation for the first system, bottom staff. Key signature: one sharp (F#). Time signature: 3/4. Chords:  $\text{d}^{\flat}$ ,  $\text{d}^{\flat}$ ,  $\text{d}^{\flat}$ ,  $\text{d}^{\flat}$ ,  $\text{d}^{\flat}$ ,  $\text{d}^{\flat}$ ,  $\text{d}^{\flat}$ ,  $\text{d}^{\flat}$ ,  $\text{d}^{\flat}$ ,  $\text{d}^{\flat}$ ,  $\text{d}^{\flat}$ ,  $\text{d}^{\flat}$ .



Musical notation for the second system, top staff. Key signature: one sharp (F#). Time signature: 3/4. Notes:  $\text{d}^{\flat}$ ,  $\text{d}^{\flat}$ ,  $\text{d}^{\flat}$ ,  $\text{d}^{\flat}$ ,  $\text{d}^{\flat}$ ,  $\text{d}^{\flat}$ ,  $\text{d}^{\flat}$ ,  $\text{d}^{\flat}$ ,  $\text{d}^{\flat}$ ,  $\text{d}^{\flat}$ ,  $\text{d}^{\flat}$ ,  $\text{d}^{\flat}$ . A fermata is placed over the final note.

Musical notation for the second system, middle staff. Key signature: one sharp (F#). Time signature: 3/4. Chords:  $\text{d}^{\flat}$ ,  $\text{d}^{\flat}$ ,  $\text{d}^{\flat}$ ,  $\text{d}^{\flat}$ ,  $\text{d}^{\flat}$ ,  $\text{d}^{\flat}$ ,  $\text{d}^{\flat}$ ,  $\text{d}^{\flat}$ ,  $\text{d}^{\flat}$ ,  $\text{d}^{\flat}$ ,  $\text{d}^{\flat}$ ,  $\text{d}^{\flat}$ .

Musical notation for the second system, bottom staff. Key signature: one sharp (F#). Time signature: 3/4. Chords:  $\text{d}^{\flat}$ ,  $\text{d}^{\flat}$ ,  $\text{d}^{\flat}$ ,  $\text{d}^{\flat}$ ,  $\text{d}^{\flat}$ ,  $\text{d}^{\flat}$ ,  $\text{d}^{\flat}$ ,  $\text{d}^{\flat}$ ,  $\text{d}^{\flat}$ ,  $\text{d}^{\flat}$ ,  $\text{d}^{\flat}$ ,  $\text{d}^{\flat}$ .



*Handwritten signatures and initials*

Musical staff with treble clef, key signature of two sharps (F# and C#), and common time signature. The staff contains a sequence of notes with some handwritten annotations below them: *4,*, *101*, *11*, *ool*, *ool*, *11*.

Musical staff system with treble and bass clefs, key signature of two sharps, and common time signature. The system contains chords and melodic lines. Handwritten annotations include *RE* and *M*.

Empty musical staff with a handwritten checkmark or symbol on the right side.

Musical staff with treble clef, key signature of two sharps, and a 3/4 time signature. It contains notes and rests. Handwritten annotations include *de* and *pa*.

Musical staff system with treble and bass clefs, key signature of two sharps, and a 3/4 time signature. The system contains chords and melodic lines. A circled symbol containing the letter *G* is present, with the text *Προπά* and *PIANO Solo* written next to it.