

3

Quand ils serent la main

3 ΟΤΑΝ ΣΦΙΓΓΟΥΝ ΤΟ ΧΕΡΙ

$\text{♩} = 108-112$

ο ο zar eply your zo xe pi

I VOLTA.

I VOLTA

ΟΤΑΝ ΣΦΙΛΙΤΟΥΝ ΤΟ ΧΕΡΙ

Handwritten musical score for the first system. The vocal line (treble clef) begins with a fermata over a whole note, followed by a second ending marked with a '2'. The lyrics are: Ο, ἡ γῆς εἰς ναὶ θεοῦ βασιλείας μα - ρίας. The piano accompaniment (grand staff) features a simple harmonic accompaniment with chords and moving lines in both hands.

Handwritten musical score for the second system. The vocal line (treble clef) continues with the lyrics: ὡς πο - θοῦ. It includes first and second endings labeled 'I VOLTA' and 'II VOLTA'. The piano accompaniment (grand staff) features chords and moving lines in both hands, with some complex textures in the right hand.

I VOLTA.

Handwritten musical notation for the first system. The vocal line is in G major (one sharp) and 2/4 time. The lyrics are: "o zav xa yo ye ot ve". The piano accompaniment consists of chords in the right hand and a simple bass line in the left hand. A first ending bracket labeled "I VOLTA." spans the final two measures.

I VOLTA.

Handwritten musical notation for the second system, which is the piano accompaniment for the first system. It features chords in the right hand and a bass line in the left hand. A first ending bracket labeled "I VOLTA." spans the final two measures.

I VOLTA.

Handwritten musical notation for the third system. The vocal line is in G major and 2/4 time. The lyrics are: "va pi upo Xe ji so - yi". The piano accompaniment consists of chords in the right hand and a simple bass line in the left hand. A first ending bracket labeled "I VOLTA." spans the final two measures.

I VOLTA.

Handwritten musical notation for the fourth system, which is the piano accompaniment for the third system. It features chords in the right hand and a bass line in the left hand. A first ending bracket labeled "I VOLTA." spans the final two measures.

ΟΤΑΝ ΣΦΙΓΓΟΥΝ ΤΟ ΧΕΡΙ

I VOLTA

φω' δα / τ'εσ αν ελ' για ξε νια σουσ

I VOLTA.

I VOLTA

ο αν σου / εω' τον και ' αν σου εω' τον και

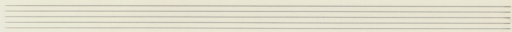
II VOLTA

Handwritten musical score for the first system. The vocal line is in G major and 3/4 time, with lyrics: "H zw ni Tra ba si ziv a m go pa H zw". A triplet of eighth notes is marked above the final measure. The piano accompaniment consists of chords in the right hand and a bass line in the left hand.

Two empty musical staves, one for the vocal line and one for the piano accompaniment.

Handwritten musical score for the second system. The vocal line is in G major and 3/4 time, with lyrics: "ni za ba si ziv a m go pa me om pa i es me om". A triplet of eighth notes is marked above the final measure. The piano accompaniment consists of chords in the right hand and a bass line in the left hand.

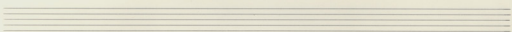
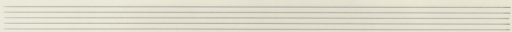
Two empty musical staves, one for the vocal line and one for the piano accompaniment.



5

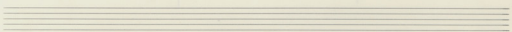
Handwritten musical notation in G major, 2/4 time. The melody is written on a treble clef staff with lyrics underneath: "pai es vai te rap rap ga ch ju". A circled number "5" is written above the staff.

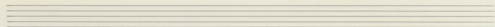
Handwritten accompaniment for the first system, consisting of two staves (treble and bass clef). The treble staff contains chords with stems, and the bass staff contains a simple bass line.



Handwritten musical notation in G major, 2/4 time. The melody is written on a treble clef staff with lyrics underneath: "ni ... pa bai in a m ga pa ch ju". A circled number "6" is written above the staff.

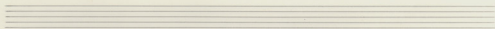
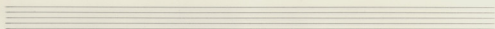
Handwritten accompaniment for the second system, consisting of two staves (treble and bass clef). The treble staff contains chords with stems, and the bass staff contains a simple bass line.





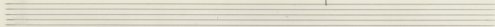
Handwritten musical notation for the first system, featuring a treble clef, a key signature of two sharps (F# and C#), and a 2/4 time signature. The melody is written on a single staff with lyrics underneath: "ni zpa baai zni a m po pa fe om". A handwritten number "7" is written at the end of the staff.

Handwritten musical notation for the first system, featuring a treble clef, a key signature of two sharps (F# and C#), and a 2/4 time signature. The accompaniment consists of two staves: the upper staff contains chords with stems, and the lower staff contains a bass line with notes and rests.

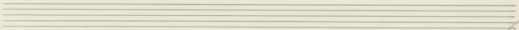


Handwritten musical notation for the second system, featuring a treble clef, a key signature of two sharps (F# and C#), and a 2/4 time signature. The melody is written on a single staff with lyrics underneath: "pai es fe om pai Es Me om pai - es". A handwritten number "8" is written at the end of the staff.

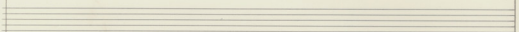
Handwritten musical notation for the second system, featuring a treble clef, a key signature of two sharps (F# and C#), and a 2/4 time signature. The accompaniment consists of two staves: the upper staff contains chords with stems, and the lower staff contains a bass line with notes and rests.



Handwritten initials or signature



Musical staff with lyrics: *vai pe rap wop ga.*



Musical staff with chords and notes.

Musical staff with notes and rests.

