

1 AYTA TA ΔENTRA

$\text{♩} = 66-69$

A

Rem.

Rem.

Rem.

za za dei pa de bo geu ox sau ke zi

1

1

AYTA TA ΔENTPA

Rem Do Rem

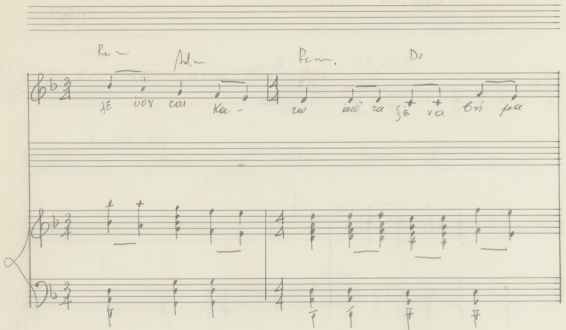
yo ce po co pa ro

Rem

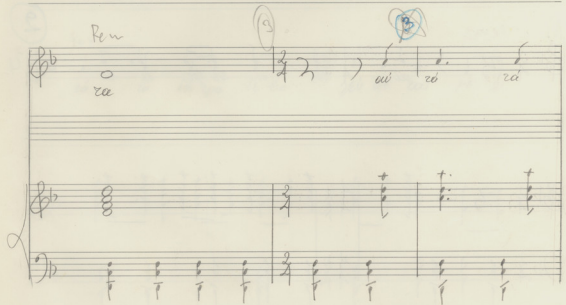
ai ces ai ces ces ces

9

Handwritten musical score for the first system. It consists of a vocal line and a piano accompaniment. The vocal line is in G major (one flat) and 3/4 time. The lyrics are: "Re - u Ad - u Re - u Do je uov eai ka - zw au ra je va tri pa". The piano accompaniment features chords in the right hand and single notes in the left hand.



Handwritten musical score for the second system. The vocal line starts with the word "ra" and continues with "ai ra ra". There are circled numbers 9 and 10 above the notes. The piano accompaniment continues with chords and single notes.



AYTA TA AENTPA

Do (4) ham Ad

opi sw do do do re - - der cai da'pa 3 4  
po ro cebr

lam Do Sit ha (5)

ciH - - - - - 2 4  
200

La Rem

es oi uap dis de lo

3  
U

Do Rem Do (6) Rem Do Rem Do

Do Rem Do Rem Do Rem Do

you or zar ai pa po ro oai oi -

AYTA TA AENTRA

1ª parte

7

Handwritten musical score for the first system. It consists of three staves: a vocal line and two piano accompaniment staves. The key signature is one flat (Bb). The vocal line begins with notes labeled 'Do', 'Re', and 'La'. The piano accompaniment features chords and rhythmic patterns. A 3/4 time signature is indicated on the right side of the system.

Handwritten musical score for the second system, including a vocal line and two piano accompaniment staves. The key signature remains one flat (Bb). The vocal line includes the lyrics: "Ei vai dagn pó dagn di oi u". The piano accompaniment continues with chords and rhythmic accompaniment. A 3/4 time signature is indicated on the left side of the system.

Le re

①

Handwritten musical notation on a single staff. The key signature has one flat (Bb). The melody starts with a dotted quarter note 'le' and a quarter note 're'. This is followed by a sequence of eighth notes: 'a pi y', 'je re', 'o sa', 'a p pa', 're', 're', 'le', 're', 'pa'. A circled '2' is written above the first eighth note of the second measure.

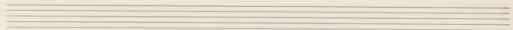
Handwritten musical notation for piano accompaniment on two staves. The left hand (treble clef) has three chords, each marked with a '+' sign and a sharp sign (#). The right hand (bass clef) has three chords, each marked with a '+' sign and a flat sign (F). The piece ends with a double bar line and repeat slashes on both staves.

②

③

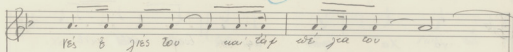
Handwritten musical notation on a single staff. The key signature has one flat (Bb). The melody starts with a dotted quarter note 're' and a quarter note 'va'. This is followed by a sequence of eighth notes: 're', 'je', 're', 'o', 'sa', 'a', 'p', 'pa'. This is followed by another sequence of eighth notes: 'a', 'p', 'pa', 'je', 're', 'o', 'sa', 'a', 'p', 'pa'. A circled '2' is written above the eighth note 're' in the second measure, and a circled '3' is written above the eighth note 're' in the third measure.

Handwritten musical notation for piano accompaniment on two staves. Both staves are empty except for double bar lines and repeat slashes, indicating the end of the piece.

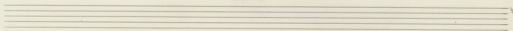
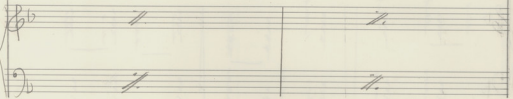


La

3



2  
+

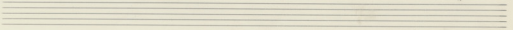
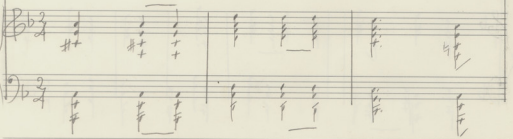
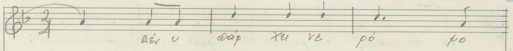


La

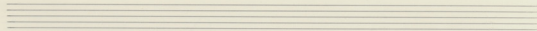
Re m

Do

La m 41

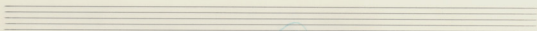
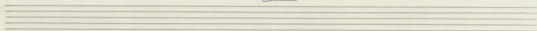
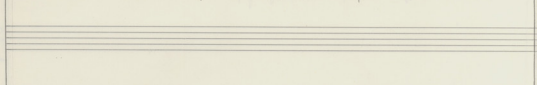






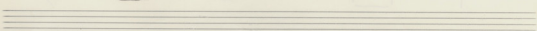
Reve Do Low Reve

vá Xa pús Aév U wáp XEí VE

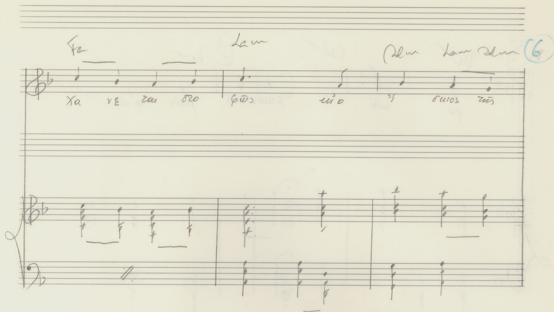


Do Low Reve (5) Do Fa

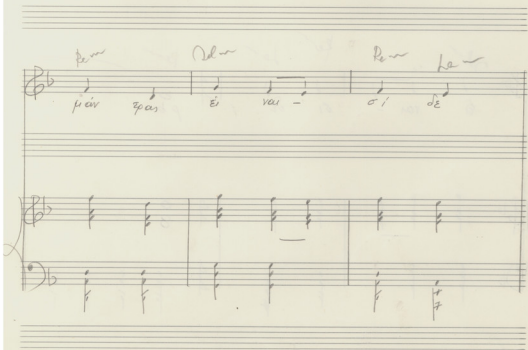
pó mo vá Xa pús 0 Apo pos



Handwritten musical score for the first system. It consists of a vocal line and a piano accompaniment. The vocal line is in G major (one sharp) and 4/4 time. The lyrics are: "Xa ve zai ozo pas eio si ouos mas". Above the notes are the chords: F#m, Lam, and Dm Lam Dm. A circled number "6" is written at the end of the system.



Handwritten musical score for the second system. It consists of a vocal line and a piano accompaniment. The vocal line is in G major (one sharp) and 4/4 time. The lyrics are: "pas pas ei var - oi de". Above the notes are the chords: Dm, Dm, Dm, and Lam. The piano accompaniment continues with chords in the left hand.



*Per* *Ad* *Per*

po uio i ouos ems paiv qas

*Ad* *Per* *Lo* *Per*

ei ran - si de po

8

Handwritten musical notation on a system of three staves. The top staff has a treble clef with a flat key signature and a single note. The middle staff has a treble clef with a flat key signature and two notes. The bottom staff has a bass clef with a flat key signature and a double bar line. A circled number '8' is written in the right margin.

Seven empty musical staves.