

③ ΤΟ ΚΡΥΠΟ

TA ΠΡΟΣΩΠΑ
ΤΟΥ ΑΓΙΟΥ

la MI MI la

Τὴν ἀνὰ τὴν ἐκκλησίαν Χριστοῦ

la mi FA D=

τὴν ἀνὰ τὴν ἐκκλησίαν Χριστοῦ

la MI FA D= la ze

τὴν ἀνὰ τὴν ἐκκλησίαν Χριστοῦ

ze MI la mi FA D=

τὴν ἀνὰ τὴν ἐκκλησίαν Χριστοῦ

la MI MI ze MI

τὴν ἀνὰ τὴν ἐκκλησίαν Χριστοῦ

la MI la MI la MI la

τὴν ἀνὰ τὴν ἐκκλησίαν Χριστοῦ

MI la la MI la

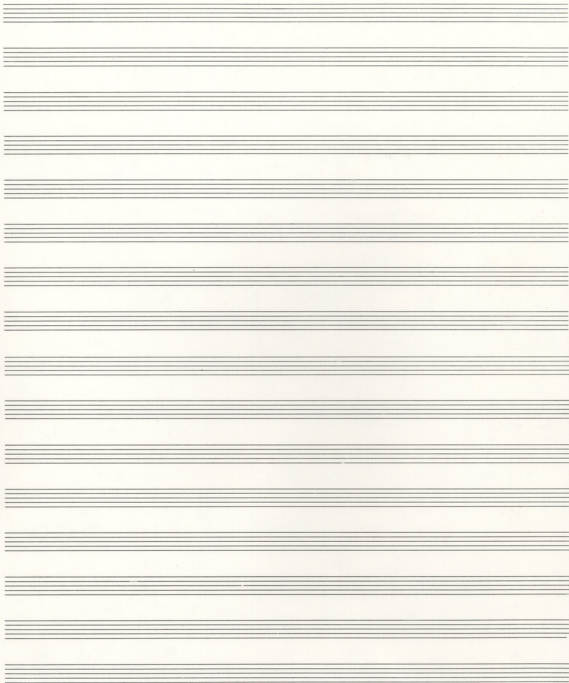
τὴν ἀνὰ τὴν ἐκκλησίαν Χριστοῦ

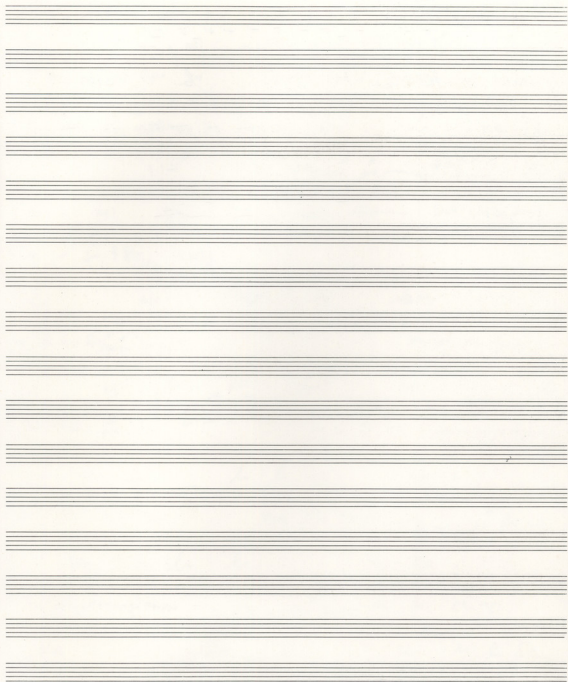
Sol la la ze FA

τὴν ἀνὰ τὴν ἐκκλησίαν Χριστοῦ

FA FA MI ze MI la Sol

τὴν ἀνὰ τὴν ἐκκλησίαν Χριστοῦ





Sol Do

ὁ ἄγιος πνεῦμα ἡμᾶς ἁγιάζει καὶ ἡμᾶς ἁγιάζει καὶ ἡμᾶς ἁγιάζει

καὶ ἡμᾶς ἁγιάζει καὶ ἡμᾶς ἁγιάζει καὶ ἡμᾶς ἁγιάζει

καὶ ἡμᾶς ἁγιάζει καὶ ἡμᾶς ἁγιάζει καὶ ἡμᾶς ἁγιάζει

Αἴμα
24. VII. 87

To Kpato

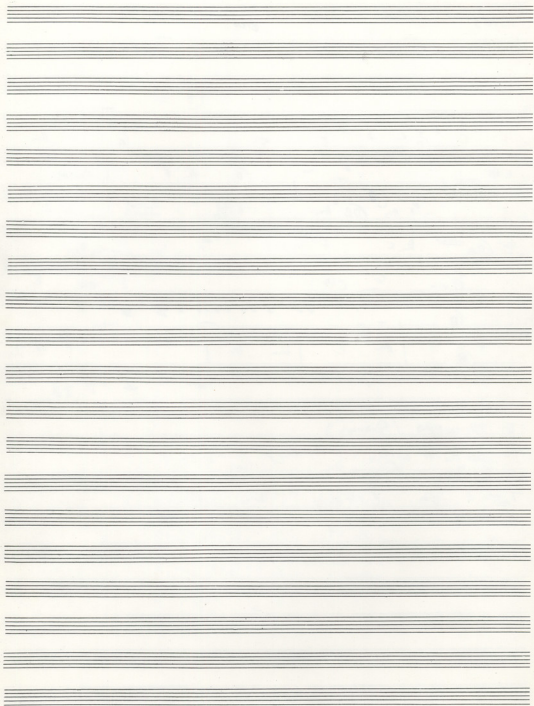
SAHX
BHW

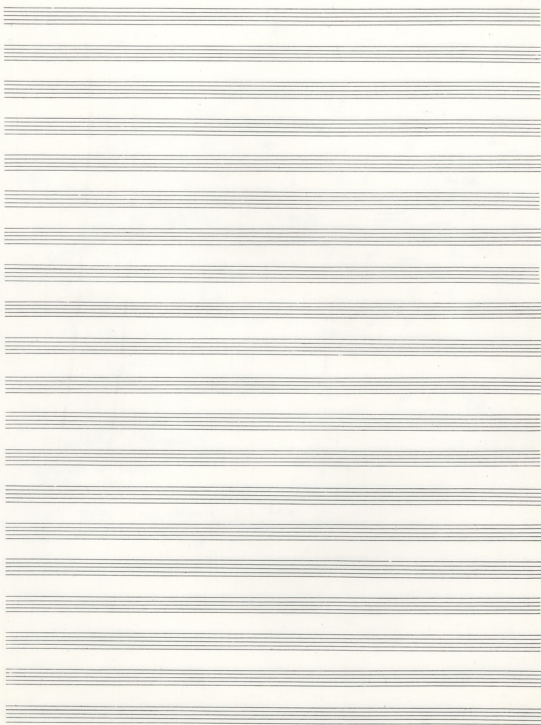
The musical score for 'To Kpato' is written on six staves. The first staff shows a treble clef and a key signature of one sharp (F#). The second staff contains the melody with various notes and rests. The third and fourth staves provide harmonic accompaniment with chords such as F, C, E, Am, and G. The fifth and sixth staves continue the accompaniment with chords like Dm, F, and E. There are several circled letters (A, B) and other markings throughout the score, possibly indicating specific sections or performance instructions.

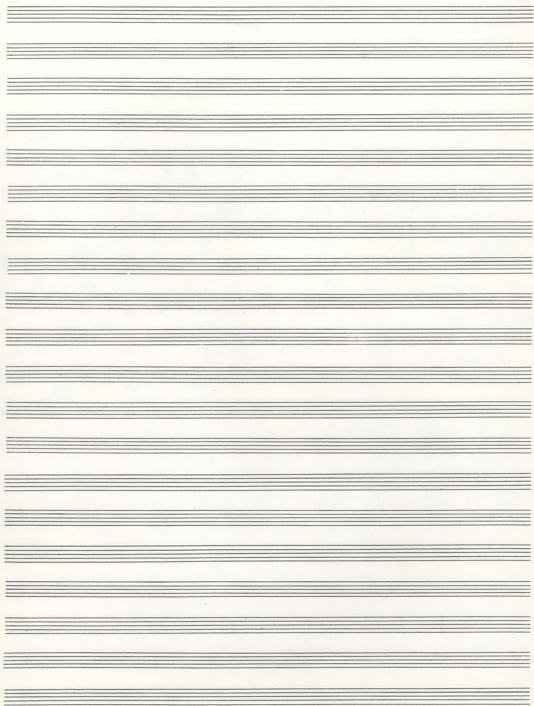
To Trimeps (Dancing)

TH PONTA # ENXH (AKOPI) fan?
 O BOPIA (DANCING) SA
 TETIA WPA (AKOPI) DO
 VIXTIVA (AKOPI) SA

Empty musical staves for additional notation.







ΤΑ ΠΡΟΣΩΠΑ
ΤΟΥ ΗΓΙΟΥ

ni man a lo xi ce xra to i do mo ni p san ti pa tra

ni pa tris xi ni pa tris - tis

ΕΡΧΟΜΕΝΟΝ ΔΕΚΑΤΟΝ ΣΠΙΝΟΝ

ni pa tris xi ni pa tris - tis

ni pa tris xi ni pa tris - tis

ni pa tris xi ni pa tris - tis

ni pa tris xi ni pa tris - tis

ni pa tris xi ni pa tris - tis

ni pa tris xi ni pa tris - tis

ni pa tris xi ni pa tris - tis

ni pa tris xi ni pa tris - tis

ni pa tris xi ni pa tris - tis

ni pa tris xi ni pa tris - tis

ni pa tris xi ni pa tris - tis

ni pa tris xi ni pa tris - tis

ni pa tris xi ni pa tris - tis

ni pa tris xi ni pa tris - tis

Do FA FA LA ze

re tei "tt po mo Xt clu os ce-xi a ni pi o

Sol Do Re Do FA

re tei os fa tes u m mi pny

Do Re dom Do ze

tu o fa m ut o fa ce re ce tu t

ze sil sicut ze Do FA Sol

ze la sem LA RO

lan carni ope ni ka r bai mo ma ope tu de xi

MI RE Sol Si m

tu fa do os tu p. os

LA RE MI RE



