

1. Το Συλλυγμένο

Ε
(βρυση πα' ελ' η' πα' η')

Allegro Moderato

(ΚΑΘΩΣ ΤΟ ΑΡΧΑΙΟΤΕΡΟΝ (S.M.T.)
ΟΕΕ. ΟΥΝ ΤΟ ΑΣΤΕΥΡΟΝ ΑΡΧΑΙΟΝ ΟΥΣΙΝΟΥ (ΔΟ) ΜΕ ΤΕΤΕ)

Viola

Viol II

Viola

Cello

Boys

Η ή χαλκίαν ορεάντο
ΚΑΡΑ ΚΑΡΑ

(Cello in basso assai rasostron
passo più arpastra Gini nei quinquages)

dim. ppp

ΚΑΡΑ ΚΑΡΑ ΕΥΡΑΝ

The lower section of the page contains four staves of handwritten musical notation. The notation is dense and includes various rhythmic values, accidentals, and dynamic markings such as accents and hairpins. The staves appear to be for different instruments or voices, continuing the piece from the upper section. The handwriting is consistent with the rest of the document.

Allegro moderato, ma

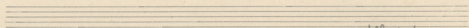
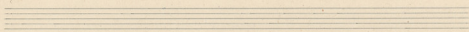
Handwritten musical score for five staves. The first two staves feature rhythmic patterns of eighth notes with accents. The third staff has a similar pattern. The fourth staff contains chords with accents and dynamic markings like "ff" and "p". The fifth staff has notes with accents and dynamic markings like "p" and "ff".

Largo

Handwritten musical score for five staves. The first staff has a treble clef and a 3/4 time signature. The second and third staves have bass clefs. The fourth and fifth staves have bass clefs and contain sustained notes with dynamic markings like "pp" and "p".

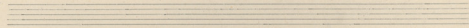
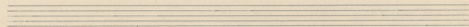
Handwritten musical score for the first system, consisting of five staves. The top staff contains a melodic line with a dynamic marking of *sf* (sforzando) and a hairpin crescendo. The second and third staves are accompaniment parts with dynamic markings of *pp* (pianissimo) and *p* (piano). The fourth staff is another accompaniment part with *pp* and *p* markings. The bottom staff is a bass line with *pp* markings. The system is divided into three measures by vertical bar lines.

Handwritten musical score for the second system, consisting of five staves. The top staff contains a melodic line with a dynamic marking of *mf* (mezzo-forte) and a hairpin crescendo. The second and third staves are accompaniment parts with *mf* markings. The fourth staff is another accompaniment part with *mf* markings. The bottom staff is a bass line with *mf* markings. The system is divided into three measures by vertical bar lines.



Allo Moderato

No. 60 *Allegro* *con* *forzando*
 non *Animato* *per* *forz.*
sempre staccato
arco
pr. sprat. battim.

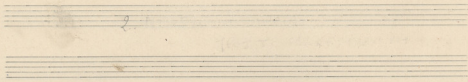



Handwritten musical score for five staves, measures 1-5. The notation includes treble and bass clefs, a key signature of one flat (B-flat), and a 3/4 time signature. The first two staves feature complex rhythmic patterns with triplets and slurs. The third staff has a similar rhythmic pattern. The fourth and fifth staves are primarily rhythmic, consisting of quarter and eighth notes, with some rests and dynamic markings like *ff*.

Handwritten musical score for five staves, measures 6-10. The notation includes treble and bass clefs, a key signature of one flat (B-flat), and a 3/4 time signature. The first three staves feature complex rhythmic patterns with triplets and slurs. The fourth and fifth staves are primarily rhythmic, consisting of quarter and eighth notes, with some rests and dynamic markings like *mf* and *ff*.

Handwritten musical score for the first system, consisting of five staves. The notation includes various notes, rests, and dynamic markings such as *p* and *cres*. The first staff has a *cres* marking under a slur. The second staff has a *p* marking. The third staff has a *cres* marking. The fourth and fifth staves have a *cres* marking. The notation is dense with notes and rests, indicating a complex piece of music.

Handwritten musical score for the second system, consisting of five staves. The notation includes various notes, rests, and dynamic markings such as *p* and *cres*. The first staff has a *cres* marking under a slur. The second staff has a *p* marking. The third staff has a *cres* marking. The fourth and fifth staves have a *cres* marking. The notation is dense with notes and rests, indicating a complex piece of music.



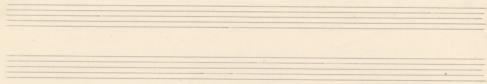
Moderato

Solo 2

All: Moderato (Ma sempre con anima)

Rall

Rall



Flaut *C* $\frac{2}{4}$

Violin I *C* $\frac{2}{4}$

Violin II *Tempo* $\frac{2}{4}$ *Rall*

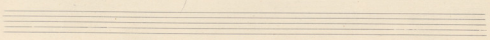
Viola *Tempo* $\frac{2}{4}$ *Rall*

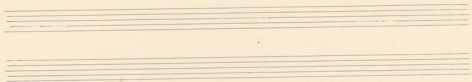
~~Cello~~ *Cello* $\frac{2}{4}$ *Rall*

Handwritten musical notation for the first system, including notes, rests, and dynamic markings like *Tempo* and *Rall*.

Tempo

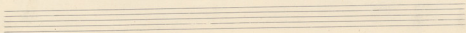
Handwritten musical notation for the second system, featuring rhythmic patterns, accents, and dynamic markings such as *Tempo* and *Rall*.





Handwritten musical notation on five staves. The first two staves contain rhythmic patterns with notes and rests. The third staff has notes with stems and flags, including a 'sk' marking. The fourth staff contains notes with stems and flags, some with accidentals. The fifth staff contains rhythmic markings.

Handwritten musical notation on five staves. The first staff contains notes with stems and flags, including a 'sk' marking. The second staff contains notes with stems and flags, including a 'sk' marking. The third staff contains notes with stems and flags, including a 'sk' marking. The fourth staff contains notes with stems and flags, including a 'sk' marking. The fifth staff contains rhythmic markings.



Handwritten musical score for a piano piece, consisting of five staves. The notation includes various notes, rests, and dynamic markings such as 'p' and 'f'. The score is organized into measures, with some measures containing multiple notes and rests. The key signature appears to be one flat (B-flat), and the time signature is not explicitly shown but the notation suggests a common time signature.

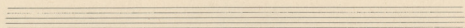
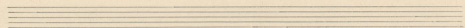
Handwritten musical score for a piano piece, consisting of four staves. The notation includes various notes, rests, and dynamic markings such as 'p' and 'f'. A dashed line is present above the first staff, possibly indicating a section or a specific performance instruction. The score is organized into measures, with some measures containing multiple notes and rests. The key signature appears to be one flat (B-flat), and the time signature is not explicitly shown but the notation suggests a common time signature.

Handwritten musical notation on a single staff. It features a sequence of notes with various accidentals (flats and sharps), a triplet of eighth notes, and articulation marks like accents and slurs.

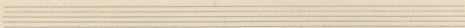
Handwritten musical notation on a system of five staves. The notation includes notes, accidentals, dynamic markings (such as *p*), and slurs across the different staves, suggesting a complex multi-voice or multi-instrumental piece.

Handwritten musical score for the first system, consisting of four staves. The notation includes various notes, rests, and dynamic markings. The first staff begins with a treble clef and a key signature of one flat. The second staff has a bass clef and a key signature of one flat. The third and fourth staves also have bass clefs and a key signature of one flat. The music features complex rhythmic patterns, including triplets and sixteenth notes. Dynamic markings such as *mf*, *f*, and *pp* are present throughout the system.

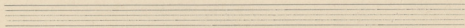
Handwritten musical score for the second system, consisting of four staves. The notation continues from the first system, featuring more complex rhythmic patterns and dynamic markings. The first staff has a treble clef and a key signature of one flat. The second staff has a bass clef and a key signature of one flat. The third and fourth staves also have bass clefs and a key signature of one flat. The music includes various notes, rests, and dynamic markings such as *mf*, *f*, and *pp*. The notation is dense and detailed, with many slurs and accents.



Handwritten musical notation on five staves. The notation includes various rhythmic symbols, accidentals, and dynamic markings such as *pp*, *f*, and *mf*. The first staff contains a sequence of notes and rests, with some notes marked with a sharp sign. The subsequent staves contain rhythmic patterns and dynamic markings.



Handwritten musical notation on five staves. The notation includes various rhythmic symbols, accidentals, and dynamic markings such as *p*, *mf*, and *arco*. The first staff contains a sequence of notes and rests, with some notes marked with a sharp sign. The subsequent staves contain rhythmic patterns and dynamic markings. The notation is dense and includes many accidentals and dynamic markings.



Handwritten musical score for a piano piece, consisting of five staves. The notation includes various rhythmic values, slurs, and accents. Dynamic markings such as *p* (piano) and *sf* (sforzando) are used throughout. The piece concludes with a double bar line and a fermata.

Handwritten musical score for a piano piece, consisting of four staves. The notation includes various rhythmic values, slurs, and accents. Dynamic markings such as *p* (piano), *fp* (fortissimo piano), and *pizz* (pizzicato) are used. The piece concludes with a double bar line and a fermata.

Handwritten musical score for the first system. The top staff is a vocal line with notes and dynamics: *mf*, *mf*, *mf*, *mf*, *mf*, *mf*, *mf*, *mf*, *mf*, *mf*. It includes markings for *I-alto* and *II-alto* with slurs. The second staff shows chords with stems and flags. The third and fourth staves contain rhythmic notation with 'x' marks. The fifth staff is a piano accompaniment with chords and stems.

Handwritten musical score for the second system. The top staff is a vocal line with notes and dynamics: *mf*, *mf*, *mf*, *mf*, *mf*, *mf*, *mf*, *mf*, *mf*, *mf*. It includes markings for *I-alto* and *II-alto* with slurs. The second staff shows chords with stems and flags. The third and fourth staves contain rhythmic notation with 'x' marks. The fifth staff is a piano accompaniment with chords and stems. The word "roll" is written below the first and second staves.

3. 17p25/x4

Flauto solo

Handwritten musical notation for Flauto solo, starting with a treble clef and a key signature of one sharp (F#). The tempo marking is *Andante*. The notation includes various note values and rests.

Violon

Handwritten musical notation for Violon, starting with a treble clef and a key signature of one sharp (F#). The tempo marking is *con Sordina*. The notation includes various note values and rests.

3 arco

Violon

Handwritten musical notation for Violon, starting with a treble clef and a key signature of one sharp (F#). The tempo marking is *con Sordina*. The notation includes various note values and rests.

3 arco

Violon

Handwritten musical notation for Violon, starting with a treble clef and a key signature of one sharp (F#). The tempo marking is *con Sordina*. The notation includes various note values and rests.

3

Flauto solo

Handwritten musical notation for Flauto solo, starting with a treble clef and a key signature of one sharp (F#). The tempo marking is *con Sordina*. The notation includes various note values and rests.

2

Cello

Handwritten musical notation for Cello, starting with a bass clef and a key signature of one sharp (F#). The tempo marking is *ppz*. The notation includes various note values and rests.

1

Handwritten musical notation for Cello, starting with a bass clef and a key signature of one sharp (F#). The notation includes various note values and rests.

Handwritten musical notation for Cello, starting with a bass clef and a key signature of one sharp (F#). The tempo marking is *pp*. The notation includes various note values and rests.

Handwritten musical notation for Cello, starting with a bass clef and a key signature of one sharp (F#). The tempo marking is *pp*. The notation includes various note values and rests.

Handwritten musical notation for Cello, starting with a bass clef and a key signature of one sharp (F#). The tempo marking is *pp*. The notation includes various note values and rests.

Handwritten musical notation for Cello, starting with a bass clef and a key signature of one sharp (F#). The notation includes various note values and rests.

Handwritten musical notation for Cello, starting with a bass clef and a key signature of one sharp (F#). The notation includes various note values and rests.

Handwritten musical score for the first system, consisting of five staves. The notation includes various rhythmic values, stems, and beams. A *finito* marking is present at the end of the system. The staves are connected by horizontal lines, and there are some annotations like *rit.* and *finito* written in the right margin.

Handwritten musical score for the second system, consisting of five staves. The notation includes various rhythmic values, stems, and beams. The staves are connected by horizontal lines. The bottom staff has markings for *pizz arco* and *p.* (piano). The system concludes with a double bar line and repeat signs.

The first system of the handwritten musical score consists of five staves. The top staff is a vocal line with a treble clef and a key signature of one sharp (F#). It contains a melodic line with various note values, including eighth and sixteenth notes, and rests. Above the vocal line, there are two dynamic markings: a hairpin crescendo leading to a forte 'f' and a hairpin decrescendo leading to a piano 'p'. The four staves below are piano accompaniment parts, each with a different clef: the second staff has a soprano clef, the third a alto clef, the fourth a tenor clef, and the fifth a bass clef. These staves contain rhythmic accompaniment, primarily consisting of eighth and sixteenth notes, with some rests. The system concludes with a double bar line and a repeat sign.

The second system of the handwritten musical score also consists of five staves. The top staff is a vocal line with a treble clef and a key signature of one sharp (F#). It features a melodic line with eighth and sixteenth notes, some with slurs, and rests. Above the vocal line, there are two dynamic markings: a hairpin crescendo leading to a forte 'f' and a hairpin decrescendo leading to a piano 'p'. The four staves below are piano accompaniment parts with different clefs: soprano, alto, tenor, and bass. These staves contain rhythmic accompaniment, including eighth and sixteenth notes, and rests. The system concludes with a double bar line and a repeat sign.

