

- 12 -

B $\sharp$ 

## ΔΟΞΑΣΤΙΚΟ

Handwritten musical score for the first system of "ΔΟΞΑΣΤΙΚΟ". The score is written in treble clef with a key signature of two sharps (F# and C#) and a 9/8 time signature. The melody is written on a single staff, and the accompaniment is on a grand staff (treble and bass clefs). The music consists of four measures, with the first measure being a whole note chord and the following three measures being quarter notes with chords.

Handwritten musical score for the second system of "ΔΟΞΑΣΤΙΚΟ". The score is written in treble clef with a key signature of two sharps (F# and C#) and a 9/8 time signature. The melody is written on a single staff with Greek lyrics underneath. The accompaniment is on a grand staff (treble and bass clefs). The music consists of four measures, with the first measure being a whole note chord and the following three measures being quarter notes with chords.

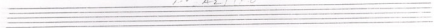
Ε  
 γω  
 εν  
 σε  
 τα  
 ορα  
 για  
 μας

ΑΘΕΑΤΙΚΟ

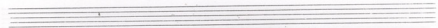
Handwritten musical score for the first system. The vocal line is in G major (one sharp) and 2/4 time. The lyrics are: Βρά ξια Βρά ξια Ε vw / Κο Πι λια φας Κο φως. The piano accompaniment consists of chords in the left hand and single notes in the right hand.

Handwritten musical score for the second system. The vocal line continues with the lyrics: Οα zι χι πια χι πια. / Οα za σες Βου ya φας. The piano accompaniment continues with chords and single notes.

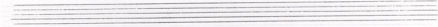
1. ΑΣΤΙΟΥ



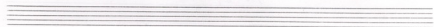
Ta Bou ra kai Ta ja yia sou  
Ma yes ko pes aka zio ki va a



Tia esi to zpa pou oi  
ei zpa tia zi pa eis



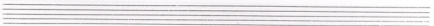
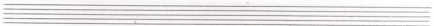
-4-  
ΑΘΑΣΤΙΚΟ



Handwritten musical notation for the first system, featuring a vocal line with lyrics and a piano accompaniment line. The key signature is one sharp (F#).

Lyrics:   
Πο ρι  
"Ε να

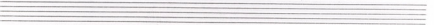
Handwritten musical notation for the second system, featuring a piano accompaniment line with chords and a bass line with notes.



Handwritten musical notation for the third system, featuring a vocal line with lyrics and a piano accompaniment line. The key signature is one sharp (F#).

Lyrics:   
Ζη ει κα ρι πο να τια ει το Χο πο  
δω ρο ρι ρια πι θα ρια αν ρι ρι βρι

Handwritten musical notation for the fourth system, featuring a piano accompaniment line with chords and a bass line with notes.



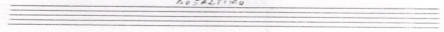
ADAGIETTO

Handwritten musical score for the first system. The top staff is a vocal line in G major, starting with a treble clef and a key signature of one sharp (F#). The melody begins with a quarter note G4, followed by a half note A4, and a quarter note B4. A fermata is placed over the B4 note. Below the vocal line, the piano accompaniment consists of two staves. The right hand plays chords in the treble clef, and the left hand plays chords in the bass clef. The first measure of the piano accompaniment includes the handwritten marking "G7".

Handwritten musical score for the second system. The top staff is a vocal line in G major, starting with a treble clef and a key signature of one sharp (F#). The melody begins with a quarter note G4, followed by a half note A4, and a quarter note B4. A fermata is placed over the B4 note. Below the vocal line, the piano accompaniment consists of two staves. The right hand plays chords in the treble clef, and the left hand plays chords in the bass clef. The first measure of the piano accompaniment includes the handwritten marking "G7".

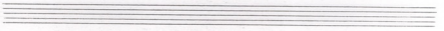
Lyrics: *Sin* *pr* *pa* *Tia* *vepru*

AD FALTI MO



Musical notation for the first system, featuring a treble clef, a key signature of two sharps (F# and C#), and a common time signature. The melody consists of quarter and eighth notes. Below the notes are the lyrics: "ou mi zu 'H jo tor".

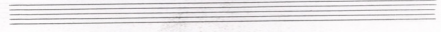
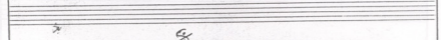
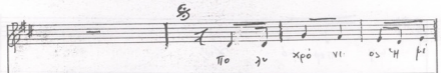
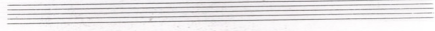
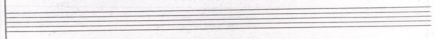
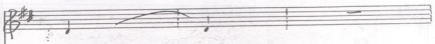
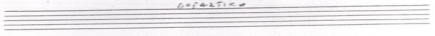
Accompanying musical notation for the first system, including a bass clef and a grand staff. The bass line features a simple harmonic accompaniment with quarter notes. The treble clef part contains chords and rests.



Musical notation for the second system, featuring a treble clef, a key signature of two sharps (F# and C#), and a common time signature. The melody consists of quarter and eighth notes. Below the notes are the lyrics: "'H jo mi zu nu em em po va noi Ba em fla oxa".

Accompanying musical notation for the second system, including a bass clef and a grand staff. The bass line features a simple harmonic accompaniment with quarter notes. The treble clef part contains chords and rests.

ΑΝΤΑΦΩΝΙΑ



РОЗНАТИКА

Handwritten musical notation for the vocal line of the first system. The staff is in G major (one sharp) and 2/4 time. The lyrics are: pa c y nep fo Xu!

Handwritten musical notation for the piano accompaniment of the first system. It consists of two staves: the upper staff is for the right hand and the lower for the left hand. The music features chords and simple rhythmic patterns.

Handwritten musical notation for the vocal line of the second system. The staff is in G major (one sharp) and 2/4 time. The lyrics are: c y nep fo Xu!

Handwritten musical notation for the piano accompaniment of the second system. It consists of two staves: the upper staff is for the right hand and the lower for the left hand. The music features chords and simple rhythmic patterns.