

78

ΣΤΑ ΠΕΡΒΟΛΙΑ

Handwritten musical score for the first system of "ΣΤΑ ΠΕΡΒΟΛΙΑ". The score is written on three staves: Treble Clef (top), Bass Clef (middle), and Bass Clef (bottom). The key signature is one sharp (F#) and the time signature is 9/8. The music features a melodic line in the treble clef, a bass line in the middle clef, and a bass line in the bottom clef. There are some scribbles and corrections in the first few measures.

Two empty musical staves, one above the other, intended for the second system of the score.

Handwritten musical score for the second system of "ΣΤΑ ΠΕΡΒΟΛΙΑ". The score is written on three staves: Treble Clef (top), Bass Clef (middle), and Bass Clef (bottom). The key signature is one sharp (F#) and the time signature is 9/8. The music continues from the first system, with a melodic line in the treble clef, a bass line in the middle clef, and a bass line in the bottom clef. There are some scribbles and corrections in the first few measures.

-2-  
ΣΤΑ ΠΕΡΘΑΙΝ

Στα Περθ  
Στο Τέρ

The first system of the handwritten musical score consists of three staves. The top staff is a vocal line in treble clef with a key signature of one sharp (F#) and a 4/4 time signature. It contains two measures of music, with the lyrics "Στα Περθ" and "Στο Τέρ" written below. The middle staff is a piano accompaniment in treble clef, showing chords and melodic lines. The bottom staff is a piano accompaniment in bass clef, showing chords and a bass line. There are some scribbles and corrections in the piano parts.

66 γα τει ραις Αρ Di ρπ' ραις κη - - ραις Εαρ  
66 γα τει ραις Αρ Di ρπ' ραις κη - Τεις

The second system of the handwritten musical score consists of three staves. The top staff is a vocal line in treble clef with a key signature of one sharp (F#) and a 4/4 time signature. It contains three measures of music with the lyrics "66 γα τει ραις Αρ Di ρπ' ραις κη - - ραις Εαρ" and "66 γα τει ραις Αρ Di ρπ' ραις κη - Τεις" written below. The middle staff is a piano accompaniment in treble clef, showing chords and melodic lines. The bottom staff is a piano accompaniment in bass clef, showing chords and a bass line.

.3-

## ΕΤΑ ΝΕΡΒΟΝΙΑ

Handwritten musical score for the first system of "ΕΤΑ ΝΕΡΒΟΝΙΑ". The score is written on a grand staff with a vocal line and a piano accompaniment. The key signature is G major (one sharp) and the time signature is 2/4. The lyrics are in Greek.

Vocal line lyrics: α 2) ο 2ε da - em sou ps - xo  
 Άν - σε Παρε Χάρι εσε - - κκα

Handwritten musical score for the second system of "ΕΤΑ ΝΕΡΒΟΝΙΑ". The score continues the vocal line and piano accompaniment. The key signature remains G major and the time signature is 2/4.

Vocal line lyrics: πό  
 οι

ΕΤΑ ΔΙΒΡΟΔΙΑ

Kar zo na po da ka fi sou  
As si Ta' po su Xi se sou

ti na diou pre ra ta sou ra pa jou  
ra na tra jou di zo xi xa pi se pei

ΕΤΑ ΠΕΡΒΟΛΙΑ

Handwritten musical notation for the first system. The top staff is in treble clef with a key signature of one sharp (F#) and a 2/4 time signature. The melody consists of quarter and eighth notes. The lyrics are written below the staff: "En sou pi pa di Kpa za" and "Kpa za".

Handwritten musical notation for the second system. The top staff continues the melody from the first system. The bottom staff shows a bass line with chords, primarily consisting of triads and dyads. A double bar line is present in the middle of the system.

Handwritten musical notation for the third system. The top staff continues the melody. The lyrics are: "zo Kpa pi ro uoi zo you pro!" and "mi Kap sou na ra ju mio".

Handwritten musical notation for the fourth system. The top staff continues the melody. The bottom staff shows the bass line with chords. A double bar line is present in the middle of the system.

ΣΤΑ ΠΕΡΒΟΛΙΑ

Handwritten musical score for the first system of "ΣΤΑ ΠΕΡΒΟΛΙΑ". It features a vocal line in G major with lyrics in Greek, and piano accompaniment in the right and left hands. The lyrics are: "Και για όλα κι όλα / Και για όλα κι όλα".

Handwritten musical score for the second system of "ΣΤΑ ΠΕΡΒΟΛΙΑ". It continues the vocal line and piano accompaniment. The lyrics are: "είναι η ζωή σου με τον ήλιο / είναι η ζωή σου με τον ήλιο".

-7-

ETA NEPBOAIA

Handwritten musical notation for the first system, featuring a vocal line with lyrics and a piano accompaniment. The key signature is two sharps (F# and C#) and the time signature is 4/4. The lyrics are: "Aa' eai pu' bap' o'w' Mh' rnis' Aa' pu' fu' ka' zia' Gud' zo'".

Handwritten musical notation for the second system, showing piano accompaniment for the first system. It consists of two staves: a treble clef staff with chords and a bass clef staff with chords.

Handwritten musical notation for the third system, featuring a vocal line with lyrics and a piano accompaniment. The key signature is two sharps (F# and C#) and the time signature is 4/4. The lyrics are: "ma' xus' zi' gu' zia' pav' du' pis' xa' --- fe' Mi' zu' oo' sai' e' Gu' ya' pa' reu' --- ja' e'".

Handwritten musical notation for the fourth system, showing piano accompaniment for the third system. It consists of two staves: a treble clef staff with chords and a bass clef staff with chords.

ETA ARBOREA

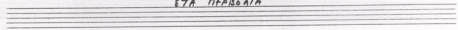
Handwritten musical score for the first system of "ETA ARBOREA". It consists of three staves. The top staff is a vocal line in G major (one sharp) with lyrics: "Pa' te ste ter ra go ra - xo po cu in spi ritu Na - ye - deo". The middle staff is a piano accompaniment with chords and some melodic lines. The bottom staff is empty.

Handwritten musical score for the second system of "ETA ARBOREA". It consists of three staves. The top staff is empty. The middle staff is a vocal line with notes and rests. The bottom staff is a piano accompaniment with chords. The system ends with a double bar line.

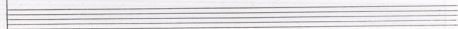


9

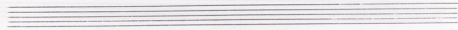
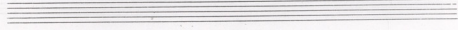
ETA DEABOIA



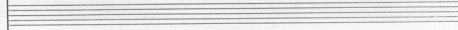
Handwritten musical notation for the first system, featuring a vocal line with lyrics: se ro sov ge us ani da fa



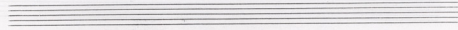
Handwritten musical notation for the piano accompaniment of the first system, including treble and bass clefs and chordal structures.



Handwritten musical notation for the second system, featuring a vocal line with lyrics: ho ro spar zo spar ro sov si an ge



Handwritten musical notation for the piano accompaniment of the second system, including treble and bass clefs and chordal structures.



ETA PERBONIA

Handwritten musical score for the piece "ETA PERBONIA". The score is written on a system of three staves. The top staff is in treble clef with a key signature of one sharp (F#) and a common time signature (C). It contains a melodic line with notes and rests, with the lyrics "rip' a' m' ju" written below the notes. The middle staff is in bass clef and contains a melodic line with notes and rests, ending with a double bar line and a repeat sign. The bottom staff is in bass clef and contains a bass line with chords and rests. The score is written in black ink on aged, slightly yellowed paper.