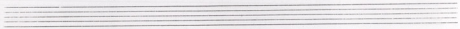


-1-

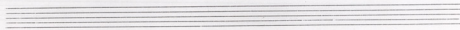
ΚΟΙΜΗΣΟΥ ΑΓΓΕΛΟΥΔΙ ΜΟΥ.

Handwritten musical score for the first system. It consists of three staves. The top staff is a treble clef with a key signature of two sharps (F# and C#) and a 3/4 time signature. The middle staff is a vocal line with a treble clef, showing a melody of quarter notes: G4, A4, B4, C5, B4, A4, G4. The bottom staff is a bass line with a bass clef, showing a harmonic accompaniment of chords: G2-B2, A2-C3, B2-D3, and G2-B2. The first measure contains a fermata over the G2-B2 chord.

Handwritten musical score for the second system. It consists of three staves. The top staff is a treble clef with a key signature of two sharps (F# and C#). The middle staff is a vocal line with a treble clef, showing a melody of quarter notes: G4, A4, B4, C5, B4, A4, G4. The bottom staff is a bass line with a bass clef, showing a harmonic accompaniment of chords: G2-B2, A2-C3, B2-D3, and G2-B2. The first measure contains a fermata over the G2-B2 chord.



Handwritten musical score for the first system. It consists of two staves. The upper staff is in treble clef with a key signature of two sharps (F# and C#). The lower staff is in bass clef with the same key signature. The music includes various notes, rests, and dynamic markings. A fermata is placed over the final note of the upper staff, with the lyrics "Κοι Κε" written below it.



Handwritten musical score for the second system. It consists of two staves. The upper staff is in treble clef with a key signature of one flat (Bb). The lower staff is in bass clef with the same key signature. The music includes various notes, rests, and dynamic markings. The lyrics "Μην Μην σου σου Αγγε μου ορ μου ρι σε ρι μου" are written below the notes. The system concludes with a double bar line.

.3-

PROMISSON AITTOYAR MO

Handwritten musical notation for the first system. The vocal line is in G major (one sharp) and 4/4 time. The lyrics are written below the notes. The piano accompaniment is in the bass clef with a key signature of one flat (F major/D minor).

Lyrics:
 Ttar ri kav Na NI NA- NI
 Na yi kav cov A TSA- NI

Handwritten musical notation for the second system, showing the piano accompaniment. It includes chords, dynamics like *mf* and *f*, and articulation marks such as accents and slurs.

Handwritten musical notation for the third system. The vocal line continues with lyrics. The piano accompaniment includes a double bar line with repeat dots.

Lyrics:
 Na pi ya ju oers jpi jo
 Na ri ya ni kap sou ja

Handwritten musical notation for the fourth system, showing the piano accompaniment. It includes chords, dynamics like *f*, and articulation marks.

ΚΕΙΜΗΛΟΝ ΑΓΓΕΛΟΥ ΜΕΛ.

Handwritten musical notation for the first system, featuring a treble clef, a key signature of one flat (B-flat), and a common time signature. The melody consists of several notes, with a dotted quarter note followed by an eighth rest, and a dotted half note. The lyrics are: "pa σου - - - - -" and "δαν σο υμ", "Σαν σοι χρι".

Handwritten musical notation for the second system, featuring a treble clef, a key signature of one flat (B-flat), and a common time signature. The system contains three measures with double bar lines (//) and a final measure with a melodic line and a bass line. The lyrics are: "pa σου - - - - -" and "δαν σο υμ", "Σαν σοι χρι".

Handwritten musical notation for the third system, featuring a treble clef, a key signature of one flat (B-flat), and a common time signature. The melody consists of several notes, with a dotted quarter note followed by an eighth rest, and a dotted half note. The lyrics are: "jo του ηγα za - - - - -", "δαν σο υμ", "Σαν σοι χρι".

Handwritten musical notation for the fourth system, featuring a treble clef, a key signature of one flat (B-flat), and a common time signature. The system contains three measures with double bar lines (//) and a final measure with a melodic line and a bass line. The lyrics are: "jo του ηγα za - - - - -", "δαν σο υμ", "Σαν σοι χρι".

-5-

KUMHAY ACDIADOMI MU

Handwritten musical notation for the first system. The vocal line is in treble clef with a key signature of one flat (Bb) and a common time signature. The lyrics are written below the notes. The piano accompaniment is in bass clef, showing the first few measures of the piece.

Lyrics:
 No: rō hā yēs ēr pas sio - uop
 rō hā hā hā ēs pas sio - ŷw

Handwritten musical notation for the second system. The piano accompaniment continues in bass clef. A fermata is placed over the final measure of the system. The system concludes with a double bar line and repeat signs.

Handwritten musical notation for the third system. The vocal line is in treble clef with a key signature of one flat (Bb) and a common time signature. The lyrics are written below the notes. The piano accompaniment is in bass clef, showing the continuation of the piece.

Lyrics:
 hi kai ēro - pva jō uat
 n ōu ōw - pōo pō uat
 uat
 uat

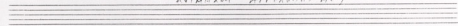
Handwritten musical notation for the fourth system. The piano accompaniment continues in bass clef. A fermata is placed over the final measure of the system. The system concludes with a double bar line and repeat signs.

ΚΟΙΝΗΡΟΙ ΠΕΡΙΣΤΡΟΦΕΣ

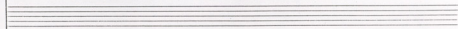
Handwritten musical score for the first system. The top staff is a vocal line in G major (one sharp) and 4/4 time. The lyrics are: *ra' ope sou Tax zo mi-oso ope to te or na ope dia no pa ra-on ni stis nai - Irou*. The piano accompaniment consists of two staves: the upper staff has a treble clef and the lower staff has a bass clef. The accompaniment features a simple harmonic structure with some triplets and rests.

Handwritten musical score for the second system. The top staff continues the vocal line with lyrics: *jo po Koi mi sou ay je*. The piano accompaniment continues with similar harmonic patterns, including a key signature change to D major (two sharps) in the final measure of the system.

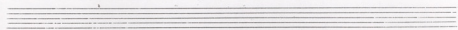
7 -
KUMHARI ACCADULTI MUM



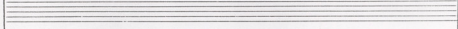
Musical notation for the first system, featuring a vocal line with lyrics: "jou di pou ju uo ps".



Piano accompaniment for the first system, including treble and bass clefs with a slur over the treble staff.



Musical notation for the second system, featuring a vocal line with lyrics: "zo zpa jou - di pou".



Piano accompaniment for the second system, including treble and bass clefs with a slur over the treble staff.

