

ΠΟΛΙΤΕΙΑ Δ

Εξελ

Δ ΑΙΣΙΟΛΟΓΙΑ

Εκφ.

Handwritten musical notation for the first system. It consists of two staves. The top staff is in treble clef with a key signature of one sharp (F#) and a 2/4 time signature. The bottom staff is in bass clef. The music features a melody line with eighth and sixteenth notes, and a bass line with quarter notes and rests. There are several slurs and ties across the measures.

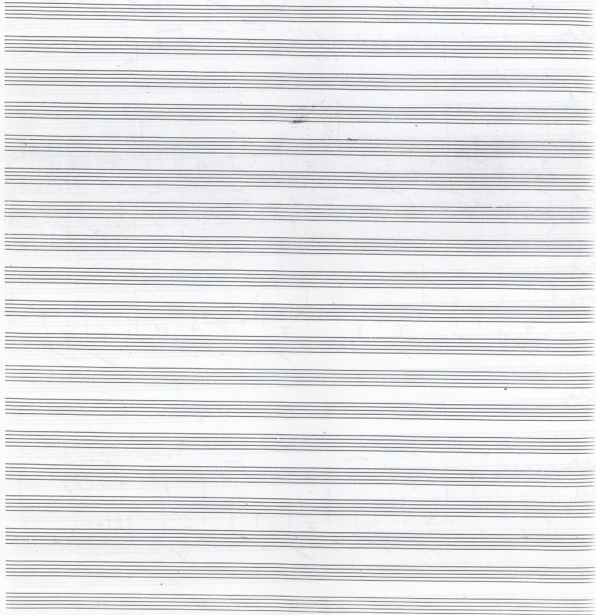
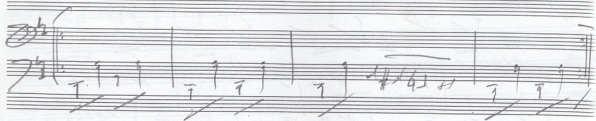
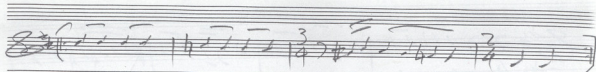
Handwritten musical notation for the second system. It consists of two staves. The top staff is in treble clef with a key signature of one sharp (F#) and a 2/4 time signature. The bottom staff is in bass clef. The music continues with a melody line and a bass line, featuring various rhythmic patterns and slurs.

Handwritten musical notation for the third system. It consists of two staves. The top staff is in treble clef with a key signature of one sharp (F#) and a 2/4 time signature. The bottom staff is in bass clef. The music continues with a melody line and a bass line, featuring slurs and ties.

A single staff of handwritten musical notation. It is in treble clef with a key signature of one sharp (F#) and a 2/4 time signature. The notation appears to be a continuation of the bass line or a specific rhythmic pattern.

Handwritten musical notation for the fourth system. It consists of two staves. The top staff is in treble clef with a key signature of one sharp (F#) and a 2/4 time signature. The bottom staff is in bass clef. The music continues with a melody line and a bass line, featuring slurs and ties.

2



Handwritten musical notation on a single staff. The key signature is two sharps (F# and C#). The notation includes several notes with stems, some beamed together, and rests.

Two staves of handwritten musical notation. The top staff has a treble clef and a key signature of two sharps. The bottom staff has a bass clef and a key signature of two sharps. Both staves are mostly empty with some faint markings.

Handwritten musical notation on a single staff. The key signature is two sharps. The notation includes several notes with stems, some beamed together, and rests.

Two staves of handwritten musical notation. The top staff has a treble clef and a key signature of two sharps. The bottom staff has a bass clef and a key signature of two sharps. Both staves are mostly empty with some faint markings.

Handwritten musical notation on a single staff. The key signature is two sharps. The notation includes several notes with stems, some beamed together, and rests. There is a double bar line followed by a fermata-like symbol.

Two staves of handwritten musical notation. The top staff has a treble clef and a key signature of two sharps. The bottom staff has a bass clef and a key signature of two sharps. Both staves are mostly empty with some faint markings.

Multiple empty musical staves, providing space for further notation.



Handwritten musical notation on a single staff, featuring a treble clef, a key signature of one sharp (F#), and a common time signature (C). The notation includes a series of eighth and quarter notes, with some notes beamed together.

Handwritten musical notation on a grand staff (treble and bass clefs). The bass clef part contains several chords, some with a 'q.' (quarter) note below them. The treble clef part is mostly blank.

Handwritten musical notation on a single staff, similar to the first system, with a treble clef, one sharp key signature, and common time. It features a sequence of eighth and quarter notes.

Handwritten musical notation on a grand staff. The bass clef part contains several chords, some with a 'q.' (quarter) note below them. The treble clef part is mostly blank.

Handwritten musical notation on a single staff, featuring a treble clef, one sharp key signature, and common time. It includes a sequence of eighth and quarter notes with some phrasing slurs.

Handwritten musical notation on a grand staff. The bass clef part contains several chords, some with a 'q.' (quarter) note below them. The treble clef part contains some notes and rests.

Handwritten musical notation on a single staff, featuring a treble clef, one sharp key signature, and common time. It shows a continuous sequence of eighth and quarter notes.

Handwritten musical notation on a grand staff. The bass clef part contains several chords, some with a 'q.' (quarter) note below them. The treble clef part is mostly blank.

Handwritten musical notation on a grand staff. The bass clef part contains several chords, some with a 'q.' (quarter) note below them. The treble clef part is mostly blank.

SONATA PIANO

Handwritten musical notation for the first system. The system consists of two staves. The upper staff is in treble clef with a key signature of two sharps (F# and C#) and a 3/4 time signature. It contains four measures of music. The lower staff is in bass clef with the same key signature and time signature, containing four measures of accompaniment.

Handwritten musical notation for the second system. The system consists of two staves. The upper staff is in treble clef with a key signature of two sharps and a 3/4 time signature. It contains four measures of music. The lower staff is in bass clef with the same key signature and time signature, containing four measures of accompaniment.

Handwritten musical notation for the third system. The system consists of two staves. The upper staff is in treble clef with a key signature of two sharps and a 3/4 time signature. It contains four measures of music. The lower staff is in bass clef with the same key signature and time signature, containing four measures of accompaniment.

Handwritten musical notation for the fourth system. The system consists of two staves. The upper staff is in treble clef with a key signature of two sharps and a 3/4 time signature. It contains four measures of music. The lower staff is in bass clef with the same key signature and time signature, containing four measures of accompaniment.

Handwritten musical notation for the fifth system. The system consists of two staves. The upper staff is in treble clef with a key signature of two sharps and a 3/4 time signature. It contains four measures of music. The lower staff is in bass clef with the same key signature and time signature, containing four measures of accompaniment.

Handwritten musical notation for the sixth system. The system consists of two staves. The upper staff is in treble clef with a key signature of two sharps and a 3/4 time signature. It contains four measures of music. The lower staff is in bass clef with the same key signature and time signature, containing four measures of accompaniment.

Handwritten musical notation for the seventh system. The system consists of two staves. The upper staff is in treble clef with a key signature of two sharps and a 3/4 time signature. It contains four measures of music. The lower staff is in bass clef with the same key signature and time signature, containing four measures of accompaniment.

Handwritten musical notation for the eighth system. The system consists of two staves. The upper staff is in treble clef with a key signature of two sharps and a 3/4 time signature. It contains four measures of music. The lower staff is in bass clef with the same key signature and time signature, containing four measures of accompaniment.

ΨΕΤΟ ΧΑΜΕΝΟ

ΤΗ ΨΥΧΗ

$\text{♩} = 60$

A handwritten musical score for the piece "ΨΕΤΟ ΧΑΜΕΝΟ ΤΗ ΨΥΧΗ". The score is written on ten systems of five-line staves. Each system contains a grand staff with a treble clef on the top line and a bass clef on the bottom line. The music is written in a key signature of one sharp (F#) and a 4/4 time signature. The tempo is indicated as $\text{♩} = 60$. The score includes various musical notations such as notes, rests, accidentals, and dynamic markings. The handwriting is in black ink on aged paper.

2

Handwritten musical notation on a single staff, featuring a treble clef and a series of rhythmic notes.

Handwritten musical notation on two staves. The top staff has a treble clef and the bottom staff has a bass clef. Both staves contain rhythmic notation with various note values and rests.

Handwritten musical notation on a single staff, featuring a treble clef and a series of rhythmic notes.

Handwritten musical notation on two staves. The top staff has a treble clef and the bottom staff has a bass clef. The notation includes rhythmic patterns and some dynamic markings.

Handwritten musical notation on a single staff, featuring a treble clef and a series of rhythmic notes. The letters 'A' and 'B' are circled below the staff.

Handwritten musical notation on two staves. The top staff has a treble clef and the bottom staff has a bass clef. The notation includes rhythmic patterns and some dynamic markings.

Handwritten musical notation on a single staff, featuring a treble clef and a series of rhythmic notes. The letter 'c' is written below the staff.

Handwritten musical notation on two staves. The top staff has a treble clef and the bottom staff has a bass clef. The notation includes rhythmic patterns and some dynamic markings.

5. VI. 02
Alm

28 min 29' Jovino
 da Bova
 no min 200
 Beethoven

(Ostap & Markovets)

A page of blank musical notation paper. The page is filled with 28 horizontal staves, each consisting of five lines. The staves are arranged in a vertical column, with a small gap between each staff. The paper is off-white and shows some faint, illegible markings and a small number '8' at the top center.

Handwritten musical notation on a single staff. The notation includes notes, rests, and dynamic markings. Above the staff, the word "FAH" is written in three locations. Above the first measure, there are two arrows pointing right. Above the second measure, there are two notes with "mi" written above them. Above the third measure, there are two notes with "mi" written above them. Above the fourth measure, there are two notes with "FAH" written above them. Above the fifth measure, there are two notes with "si" written above them.

Handwritten musical notation on two staves. The top staff contains notes and rests. The bottom staff contains notes and rests, with some accidentals (sharps) visible.

Handwritten musical notation on a single staff, consisting of a series of rests.

Handwritten musical notation on two staves. The top staff contains notes and rests with dynamic markings "p", "mf", "LA", "RE", and "SAL" above it. The bottom staff contains notes and rests with the marking "A-7" above it.

Handwritten musical notation on a single staff. It contains notes and rests, with a "p" marking above the final measure.

Handwritten musical notation on two staves. The top staff contains notes and rests with "facc" and "FA" markings above it. The bottom staff contains notes and rests with "f" markings above it.

Handwritten musical notation on a single staff. It contains notes and rests with "si" and "FAH" markings above it.

Handwritten musical notation on two staves. The top staff contains notes and rests. The bottom staff contains notes and rests with some accidentals (sharps) visible.

Handwritten musical notation on two staves, consisting of a series of rests.

.. PERI MENS ME

Handwritten musical notation on a grand staff (treble and bass clefs). The music begins with a treble clef and a key signature of one sharp (F#). The first measure contains a treble clef, a treble staff with a quarter note, and a bass staff with a whole note chord. Subsequent measures show a melody in the treble staff and chords in the bass staff.

Handwritten musical notation on a grand staff. The treble staff continues the melody with eighth and quarter notes. The bass staff provides harmonic support with chords and some eighth notes.

Handwritten musical notation on a grand staff. A dynamic marking 'A' is written above the first measure. The notation continues with a melody in the treble and chords in the bass.

Handwritten musical notation on a grand staff. The treble staff features a melodic line with a slur and an accent (>) over a note. The bass staff has chords.

Handwritten musical notation on a grand staff. The treble staff continues with a melody. The bass staff has chords and some eighth notes.

Handwritten musical notation on a grand staff. The treble staff has notes with dynamic markings 'si', 'mi', 'mi', and 'LA' written above them. The bass staff has chords.

Handwritten musical notation on a grand staff. The treble staff has a melody with slurs. The bass staff has chords and some eighth notes.

Handwritten musical notation on a grand staff. Dynamic markings 'A', 'RE', 'si', 'si', and 'su' are written above the treble staff. The notation includes a melody and chords.

Handwritten musical notation on a grand staff. The treble staff has a melody with slurs. The bass staff has chords and some eighth notes.

Handwritten musical notation on a single staff. It begins with a treble clef and a key signature of one flat. The notation includes several notes with stems, some marked with 'si' above them. There are also rests and a measure with a 'P.H.H.' marking above it.

Two empty musical staves, one with a treble clef and one with a bass clef, separated by a vertical bar line.

Handwritten musical notation on a single staff. It starts with a treble clef and a key signature of one flat. The notation includes notes with stems, some marked with 'P.H.H.' above them, and a measure with a 'si' above it.

Two empty musical staves, one with a treble clef and one with a bass clef, separated by a vertical bar line.

Handwritten musical notation on a single staff. It starts with a treble clef and a key signature of one flat. The notation includes notes with stems and rests, with a double bar line in the middle.

Handwritten musical notation on a single staff. It starts with a treble clef and a key signature of one flat. The notation includes notes with stems, a large curved line, and a double bar line.

Five empty musical staves, each with a treble clef, arranged vertically.



АХУИЭН ЭВЭНЭН

Handwritten musical score for the piece "АХУИЭН ЭВЭНЭН". The score is written on ten systems of staves, each system containing a treble clef staff and a bass clef staff. The key signature is one sharp (F#), and the time signature is 4/4. The notation includes various rhythmic values, accidentals, and dynamic markings. The piece concludes with a double bar line and a fermata over the final notes.

Handwritten musical notation on a single staff, featuring a treble clef, a key signature of one sharp (F#), and a 4/4 time signature. The notation includes various rhythmic values such as eighth and sixteenth notes, along with rests.

Handwritten musical notation on a grand staff (treble and bass clefs). The treble clef part continues the melody from the first system, while the bass clef part provides a harmonic accompaniment with chords and single notes.

Handwritten musical notation on a single staff, continuing the melody from the previous system. It features a treble clef and a key signature of one sharp.

Handwritten musical notation on a grand staff. The treble clef part shows a melodic line with some accidentals, and the bass clef part continues the accompaniment with chords and rhythmic patterns.

Handwritten musical notation on a single staff, showing a treble clef and a key signature of one sharp. The notation is sparse, with several rests.

Handwritten musical notation on a grand staff. The treble clef part has a more active melodic line with many notes and accidentals, while the bass clef part provides a steady accompaniment.

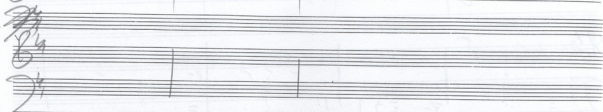
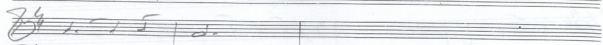
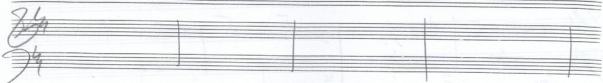
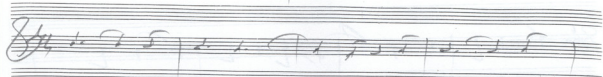
Handwritten musical notation on a single staff, featuring a treble clef and a key signature of one sharp. The notation includes some rests and rhythmic markings.

Handwritten musical notation on a grand staff. The treble clef part continues the melodic development, and the bass clef part provides accompaniment with chords and rhythmic figures.

Four empty musical staves at the bottom of the page, indicating the end of the written music on this page.

A handwritten musical score consisting of ten systems of staves. Each system contains two staves: a treble clef staff on top and a bass clef staff on the bottom. The music is written in a single system with a common time signature of 4/4. The notation includes various rhythmic values such as quarter notes, eighth notes, and rests. The score is divided into measures by vertical bar lines, with some measures containing repeat signs. The handwriting is clear and legible, showing a progression of musical ideas across the ten systems.

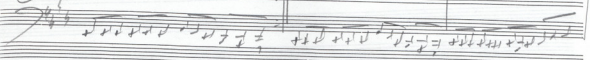
4



844



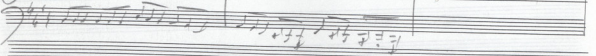
844



844



844





Второй аккорд

Handwritten musical notation for the first system. It consists of a treble clef staff with a key signature of two flats and a 6/8 time signature. The melody is written on a single staff, and the accompaniment is on a grand staff with a bass clef on the left and a treble clef on the right.

Handwritten musical notation for the second system, continuing the melody and accompaniment from the first system.

Handwritten musical notation for the third system, continuing the melody and accompaniment.

Handwritten musical notation for the fourth system, continuing the melody and accompaniment.

Handwritten musical notation for the fifth system, continuing the melody and accompaniment.

Handwritten musical notation for the sixth system, continuing the melody and accompaniment.

Handwritten musical notation for the seventh system, continuing the melody and accompaniment.

Handwritten musical notation on a single staff, featuring a treble clef, a key signature of one flat (B-flat), and a 2/4 time signature. The notation includes a series of eighth and sixteenth notes.

Handwritten musical notation on three staves. The top staff is a treble clef with a key signature of one flat. The middle and bottom staves are bass clefs, with the bottom staff containing dense, complex rhythmic patterns and some markings like '8va'.

Handwritten musical notation on a single staff, treble clef, key signature of one flat, 2/4 time signature. It shows a sequence of notes with some rests.

Handwritten musical notation on a single staff, bass clef, key signature of one flat, 2/4 time signature. It features a series of notes with some rests.

Handwritten musical notation on a single staff, bass clef, key signature of one flat, 2/4 time signature. It shows a sequence of notes with some rests.

Handwritten musical notation on a single staff, treble clef, key signature of one flat, 2/4 time signature. It features a sequence of notes with some rests.

Handwritten musical notation on two staves. The top staff is a treble clef with a key signature of one flat. The bottom staff is a bass clef with a key signature of one flat. Both staves contain complex rhythmic patterns and some markings.

Handwritten musical notation on a single staff, treble clef, key signature of one flat, 2/4 time signature. It features a sequence of notes with some rests.

Handwritten musical notation on two staves. The top staff is a treble clef with a key signature of one flat. The bottom staff is a bass clef with a key signature of one flat. Both staves contain complex rhythmic patterns and some markings.

Handwritten musical notation on three staves. The top staff is a treble clef with a key signature of one flat. The middle and bottom staves are bass clefs with a key signature of one flat. The notation includes notes, rests, and a double bar line.

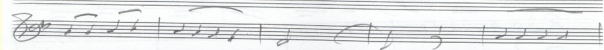
Handwritten musical score for the first system. It features a treble clef and a bass clef. The key signature has one flat (Bb), and the time signature is 4/4. The music consists of several measures with notes and rests, some of which are crossed out with diagonal lines.

Handwritten musical score for the second system. It includes a treble clef and a bass clef. A handwritten note "Adagio con XPS" is written above the music. The notation continues with notes and rests, some crossed out.

Handwritten musical score for the third system. It shows treble and bass clefs and musical notation with notes and rests, some crossed out.

Handwritten musical score for the fourth system. It features treble and bass clefs and musical notation with notes and rests, some crossed out.

Handwritten musical score for the fifth system. It includes treble and bass clefs and musical notation with notes and rests, some crossed out.



A

A B

Handwritten musical notation on a single staff, featuring a treble clef and a key signature of one flat. The notation includes a series of eighth notes and rests, with a bar line at the end.

Handwritten musical notation on two staves. The top staff is in treble clef and the bottom in bass clef. The music consists of eighth notes and rests, with a bar line at the end.

Handwritten musical notation on a single staff, featuring a treble clef and a key signature of one flat. The notation includes a series of eighth notes and rests, with a bar line at the end.

Handwritten musical notation on two staves. The top staff is in treble clef and the bottom in bass clef. The music consists of eighth notes and rests, with a bar line at the end.

Handwritten musical notation on a single staff, featuring a treble clef and a key signature of one flat. The notation includes a series of eighth notes and rests, with a bar line at the end.

Handwritten musical notation on two staves. The top staff is in treble clef and the bottom in bass clef. The music consists of eighth notes and rests, with a bar line at the end. The letters 'A' and 'B' are written above the first two measures.

Handwritten musical notation on a single staff, featuring a treble clef and a key signature of one flat. The notation includes a series of eighth notes and rests, with a bar line at the end.

Handwritten musical notation on two staves. The top staff is in treble clef and the bottom in bass clef. The music consists of eighth notes and rests, with a bar line at the end. The letters 'A' and 'B' are written above the first two measures. A circled 'C' is written above the third measure. The word 'Pianissimo' is written below the first measure, and 'Finis' is written below the last measure.

Handwritten musical notation on two staves. The top staff is in treble clef and the bottom in bass clef. The music consists of eighth notes and rests, with a bar line at the end.

This image shows a page of blank musical notation. It consists of 20 horizontal staves, each made of five lines. The staves are arranged vertically and are completely empty of any notes or markings. The paper is off-white and shows some faint, illegible ghosting of text from the reverse side. A small number '8' is visible at the top center of the page.

XRONA EXTRA

sol RE sol FA miB do RE

Handwritten musical notation for the first system. It consists of a vocal line on a treble clef staff and a piano accompaniment on a grand staff (treble and bass clefs). The vocal line starts with the notes 'sol RE sol FA miB do RE'. The piano accompaniment features a complex rhythmic pattern with many beamed notes.

Handwritten musical notation for the second system. It continues the vocal and piano parts from the first system. The piano accompaniment includes dynamic markings 'A' and 'B'.

Handwritten musical notation for the third system. The vocal line continues with a melodic phrase. The piano accompaniment features dense, beamed sixteenth-note passages.

Handwritten musical notation for the fourth system. The vocal line continues with a melodic phrase. The piano accompaniment features dense, beamed sixteenth-note passages.

Handwritten musical notation on a single staff, featuring a treble clef, a key signature of two flats (B-flat and E-flat), and a common time signature (C). The notation includes several measures of music with notes and rests, and a double bar line.

Handwritten musical notation on a single staff, featuring a treble clef, a key signature of two flats, and a common time signature. The notation includes several measures of music with notes and rests, and a double bar line.

Handwritten musical notation on a single staff, featuring a treble clef, a key signature of two flats, and a common time signature. The notation includes several measures of music with notes and rests, and a double bar line.

Handwritten musical notation on a single staff, featuring a treble clef, a key signature of two flats, and a common time signature. The notation includes several measures of music with notes and rests, and a double bar line.

Handwritten musical notation on a single staff, featuring a treble clef, a key signature of two flats, and a common time signature. The notation includes several measures of music with notes and rests, and a double bar line.

Handwritten musical notation on a single staff, featuring a treble clef, a key signature of two flats, and a common time signature. The notation includes several measures of music with notes and rests, and a double bar line.

Handwritten musical notation on a single staff, featuring a treble clef, a key signature of two flats, and a common time signature. The notation includes several measures of music with notes and rests, and a double bar line.

Handwritten musical notation on a single staff, featuring a treble clef, a key signature of two flats, and a common time signature. The notation includes several measures of music with notes and rests, and a double bar line.

3

Handwritten musical notation on a single staff, featuring a treble clef, a key signature of one flat (B-flat), and a 3/4 time signature. The notation includes a series of eighth and quarter notes, with a final measure ending in a double bar line.

Handwritten musical notation on two staves. The top staff has a treble clef and a key signature of one flat. The bottom staff has a bass clef and a key signature of one flat. The notation consists of rhythmic patterns represented by vertical lines and stems, with some beams connecting them.

Handwritten musical notation on a single staff, featuring a treble clef, a key signature of one flat, and a 3/4 time signature. The notation includes a series of eighth and quarter notes, with a final measure ending in a double bar line.

Handwritten musical notation on two staves. The top staff has a treble clef and a key signature of one flat. The bottom staff has a bass clef and a key signature of one flat. The notation consists of rhythmic patterns represented by vertical lines and stems, with some beams connecting them.

Handwritten musical notation on a single staff, featuring a treble clef, a key signature of one flat, and a 3/4 time signature. The notation includes a series of eighth and quarter notes, with a final measure ending in a double bar line.

Handwritten musical notation on two staves. The top staff has a treble clef and a key signature of one flat. The bottom staff has a bass clef and a key signature of one flat. The notation consists of rhythmic patterns represented by vertical lines and stems, with some beams connecting them.

Multiple empty musical staves, each consisting of five horizontal lines, arranged vertically on the page.



2

Handwritten musical notation on a grand staff (treble and bass clefs). The music consists of several measures with various notes and rests.

Handwritten musical notation on a grand staff. The second measure of the bass line contains a circled letter 'A'.

Handwritten musical notation on a grand staff, showing a few measures of music.

Handwritten musical notation on a grand staff. The first measure of the bass line contains a circled letter 'B'.

Handwritten musical notation on a grand staff, showing a few measures of music.

Handwritten musical notation on a grand staff. The piece concludes with a double bar line. To the right of the notation, there is a handwritten signature and the date "4.VI.02".

Handwritten musical notation on a grand staff. Above the first four measures, the numbers 1, 2, 3, and 4 are written, possibly indicating measure numbers or a sequence.

Empty musical staves at the bottom of the page.

1. = 90

Twist von (Boris)

Handwritten musical notation for the first system, featuring a treble clef, a key signature of one sharp (F#), and a 6/8 time signature. The notation includes a melody line with eighth and sixteenth notes, and a bass line with quarter notes. A large bracket is drawn under the first two measures.

Handwritten musical notation for the second system, continuing the melody and bass line from the first system. The notation includes various rhythmic values and rests.

Handwritten musical notation for the third system, showing further development of the musical piece with similar rhythmic patterns.

Handwritten musical notation for the fourth system, which appears to be a rest or a section of silence, indicated by a large vertical line and the word "A" written above the staff.

Handwritten musical notation for the fifth system, featuring a treble clef, a key signature of one sharp, and a 6/8 time signature. The notation includes a melody line and a bass line with various rhythmic values.

Handwritten musical notation for the sixth system, including a treble clef, a key signature of one sharp, and a 6/8 time signature. The notation includes a melody line and a bass line. There are some markings below the staff, possibly indicating fingerings or dynamics.

Handwritten musical notation for the seventh system, including a treble clef, a key signature of one sharp, and a 6/8 time signature. The notation includes a melody line and a bass line. There are some markings below the staff, including circled letters A and B, and some crossed-out notes.

5

Handwritten musical notation on a five-line staff. The melody is written in a treble clef with a key signature of one sharp (F#) and a 2/4 time signature. The lyrics below the staff are: "fi suu on lu i pou E vac no ta".

Handwritten musical notation on a five-line staff. The melody continues in the same treble clef, key signature, and time signature. The lyrics below the staff are: "fi suu on lu i pou E vac no ta".

Handwritten musical notation on a five-line staff. The melody continues in the same treble clef, key signature, and time signature. The lyrics below the staff are: "fi suu on lu do Ki'e. Vac tpa".

Handwritten musical notation on a five-line staff. The melody continues in the same treble clef, key signature, and time signature. The lyrics below the staff are: "fi suu on lu do Ki'e. Vac tpa".

Handwritten musical notation on a five-line staff. The melody continues in the same treble clef, key signature, and time signature. The lyrics below the staff are: "fi suu on lu do Ki'e. Vac tpa".

Handwritten musical notation on a five-line staff. The melody continues in the same treble clef, key signature, and time signature. The lyrics below the staff are: "fi suu on lu do Ki'e. Vac tpa".

Handwritten musical notation on a five-line staff. The melody continues in the same treble clef, key signature, and time signature. The lyrics below the staff are: "fi suu on lu do Ki'e. Vac tpa".

Handwritten musical notation on a five-line staff. The melody continues in the same treble clef, key signature, and time signature. The lyrics below the staff are: "fi suu on lu do Ki'e. Vac tpa".

S piano

ju st ag pu xis tou

Handwritten musical notation on three staves, including notes and rests.

Don't be a 2

Exel~

DOANTERIAS

Desv. 1^o 2^o 3^o cov
Sib 2^o 3^o 4^o 5^o 6^o 7^o 8^o 9^o 10^o 11^o 12^o

$\text{♩} = 85$

fa fa

Handwritten musical notation for the first system, featuring treble and bass clefs, a 9/8 time signature, and rhythmic patterns with stems and beams.

Handwritten musical notation for the second system, including lyrics "Mib" and "Lao fa Sib" above the notes.

Handwritten musical notation for the third system, including lyrics "Sib" and "do" above the notes.

Handwritten musical notation for the fourth system, including lyrics "do", "Sib", "Lao", and "Sib" above the notes.

Handwritten musical notation for the fifth system, including lyrics "do" above the notes.

Handwritten musical notation for the sixth system, including lyrics "Sib" and "do" above the notes.

Handwritten musical notation for the seventh system, including lyrics "Sib", "Lao", and "Sib" above the notes.

Handwritten musical notation for the eighth system, including lyrics "Sib", "Lao", "Sib", "Sib", "Sib", and "Sib" above the notes.

Handwritten musical notation for the ninth system, including lyrics "Sib" above the notes.

Handwritten musical notation on a single staff. The key signature is one sharp (F#) and the time signature is 4/4. The notes are: *So* (do), *do*, *do*, *do*, *do*, *do*, *do*, *do*, *do*, *do*. The word "golo" is written above the final notes.

Handwritten musical notation on two staves. The top staff is in treble clef with a key signature of one sharp and a time signature of 4/4. The bottom staff is in bass clef with a key signature of one sharp and a time signature of 4/4. The notation consists of rhythmic patterns and chords.

Handwritten musical notation on a single staff. The notes are: *So* (do), *do*, *do*, *do*, *do*, *do*, *do*, *do*, *do*, *do*. The word "So" is written above the first two notes and "do" above the last two notes.

Handwritten musical notation on two staves. The top staff is in treble clef with a key signature of one sharp and a time signature of 4/4. The bottom staff is in bass clef with a key signature of one sharp and a time signature of 4/4. The notation consists of rhythmic patterns and chords.

Handwritten musical notation on a single staff. The notes are: *do*, *do*, *do*, *do*, *do*, *do*, *do*, *do*, *do*, *do*. The word "Lao" is written above the first two notes, "So" above the next two, and "do" above the last two.

Handwritten musical notation on two staves. The top staff is in treble clef with a key signature of one sharp and a time signature of 4/4. The bottom staff is in bass clef with a key signature of one sharp and a time signature of 4/4. The notation consists of rhythmic patterns and chords.

Handwritten musical notation on a single staff. The notes are: *do*, *do*, *do*, *do*, *do*, *do*, *do*, *do*, *do*, *do*. The word "Lao" is written above the first two notes, "So" above the next two, and "do" above the last two.

Handwritten musical notation on two staves. The top staff is in treble clef with a key signature of one sharp and a time signature of 4/4. The bottom staff is in bass clef with a key signature of one sharp and a time signature of 4/4. The notation consists of rhythmic patterns and chords.

Handwritten musical notation on a single staff. The notes are: *do*, *do*, *do*, *do*, *do*, *do*, *do*, *do*, *do*, *do*. The word "So" is written above the first two notes, "do" above the next two, and "So" above the last two.

Handwritten musical notation on two staves. The top staff is in treble clef with a key signature of one sharp and a time signature of 4/4. The bottom staff is in bass clef with a key signature of one sharp and a time signature of 4/4. The notation consists of rhythmic patterns and chords.

Handwritten musical notation for the first system, featuring treble and bass staves with notes and a circled 'A' marking.

Handwritten musical notation for the second system, featuring treble and bass staves with notes and a circled 'A' marking.

Handwritten musical notation for the third system, featuring treble and bass staves with notes and a circled 'B' marking.

Handwritten musical notation for the fourth system, featuring treble and bass staves with notes and a circled 'D' marking.

Handwritten musical notation for the fifth system, featuring treble and bass staves with notes and letter markings B, C, K, S, A.

Handwritten musical notation for the sixth system, featuring treble and bass staves with notes and letter markings D, E, Z, H, G, B.

Handwritten musical notation for the seventh system, featuring treble and bass staves with notes and letter markings C, I, K.

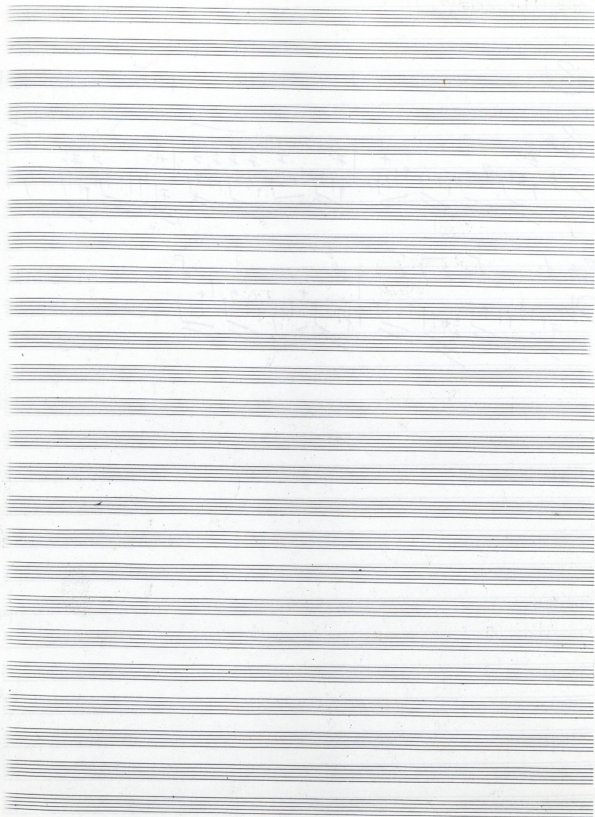
Handwritten musical notation for the eighth system, featuring treble and bass staves with notes and a circled 'A' marking.



8b

Handwritten musical notation for system 1, measures 1-3. The system consists of two staves. The top staff is in treble clef with a key signature of one flat (Bb) and a common time signature (C). It contains three measures of music with various notes and rests. The bottom staff is in bass clef with a key signature of one flat (Bb) and a common time signature (C). It contains three measures of music, primarily consisting of eighth notes and sixteenth notes.

Handwritten musical notation for system 2, measures 4-5. The system consists of two staves. The top staff is in treble clef with a key signature of one flat (Bb) and a common time signature (C). It contains two measures of music. The bottom staff is in bass clef with a key signature of one flat (Bb) and a common time signature (C). It contains two measures of music, primarily consisting of eighth notes and sixteenth notes.

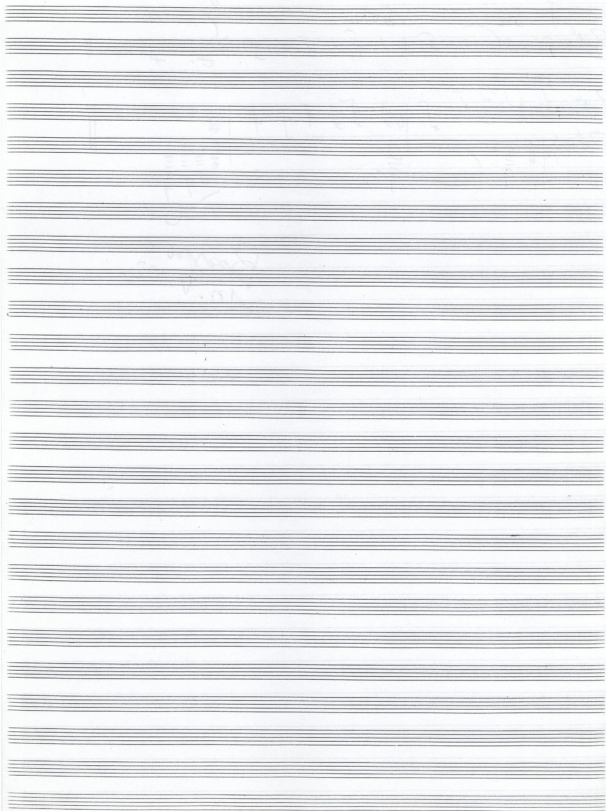


3

Handwritten musical notation on a five-line staff. The notation includes a treble clef, a key signature of one sharp (F#), and a common time signature (C). The notes are: F#4, G4, A4, B4, C5, D5, E5, F#5, G5, A5, B5, C6. Above the staff, there are handwritten annotations: "do" above the first measure, "Sol" above the second measure, "Sol" above the third measure, and "do" above the fourth measure. The piece ends with a double bar line.

Handwritten musical notation on a five-line staff. The notation includes a treble clef, a key signature of one sharp (F#), and a common time signature (C). The notes are: F#4, G4, A4, B4, C5, D5, E5, F#5, G5, A5, B5, C6. Below the staff, there are handwritten annotations: "do" above the first measure, "Sol" above the second measure, "Sol" above the third measure, and "do" above the fourth measure. The piece ends with a double bar line.

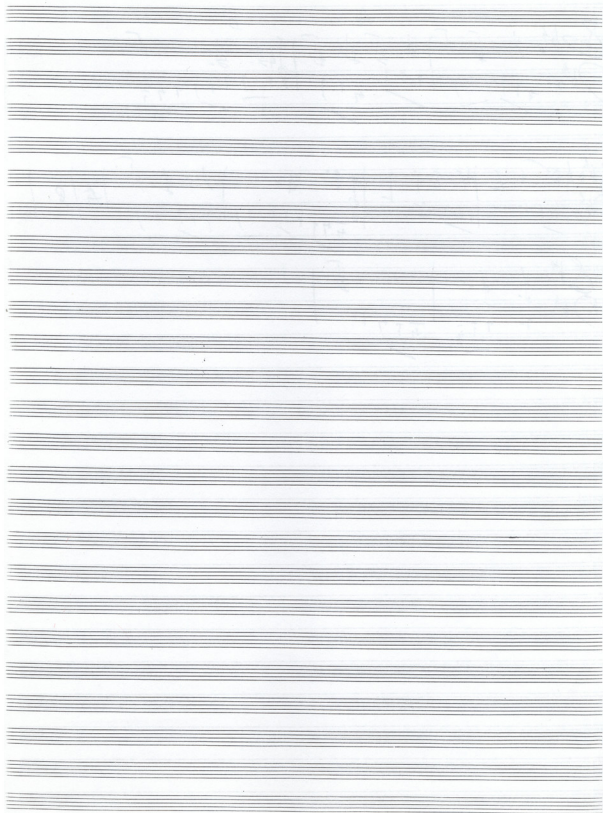
Braxton
10. V. 02



Handwritten musical notation for the first system. The top staff is in treble clef with a key signature of one flat (Bb) and a 4/4 time signature. The bottom staff is in bass clef with the same key signature and time signature. The music consists of two measures. The first measure is marked with a large 'A' above it. The second measure is marked with a large 'B' above it. The notation includes various note values, rests, and fingerings indicated by numbers 1-5.

Handwritten musical notation for the second system. The top staff is in treble clef with a key signature of one flat (Bb) and a 4/4 time signature. The bottom staff is in bass clef with the same key signature and time signature. The music consists of four measures. The first two measures are marked with a large 'A' above them. The last two measures are marked with a large 'B' above them. The notation includes various note values, rests, and fingerings. A repeat sign is present at the end of the system.

Handwritten musical notation for the third system. The top staff is in treble clef with a key signature of one flat (Bb) and a 4/4 time signature. The bottom staff is in bass clef with the same key signature and time signature. The music consists of two measures. The notation includes various note values, rests, and fingerings.



Spencer

Ex. 1

POSITIV 4

Ex 2

