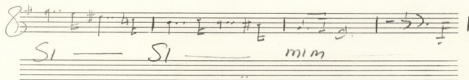
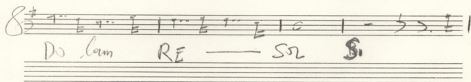
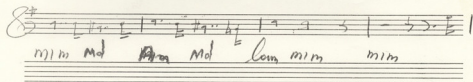
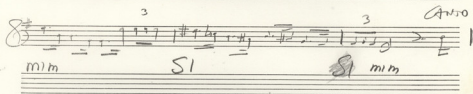
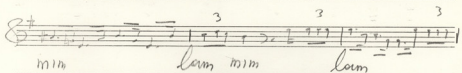
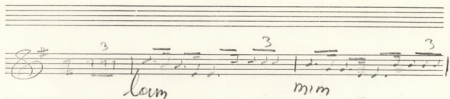


01 TEJUNTADOI



SI ——— SI — mim — low mim

SI ——— SI —

mim ——— SI

SI ——— Spim mim ——— mim SI mim ——— SI

01 TEJUNTATOI

Handwritten musical notation on a five-line staff. The key signature has one sharp (F#). The time signature is 8/8. The melody consists of three measures, each containing a triplet of eighth notes. The notes are G4, A4, and B4. Below the staff, the lyrics "lam mim" are written under the first two measures.

Handwritten musical notation on a five-line staff. The key signature has one sharp (F#). The time signature is 8/8. The melody consists of three measures, each containing a triplet of eighth notes. The notes are G4, A4, and B4. Below the staff, the lyrics "mim Mim lam mim lam" are written under the three measures.

Handwritten musical notation on a five-line staff. The key signature has one sharp (F#). The time signature is 8/8. The melody consists of three measures, each containing a triplet of eighth notes. The notes are G4, A4, and B4. Below the staff, the lyrics "mim SI Mim mim" are written under the three measures. The word "Anno" is written above the end of the staff.

Handwritten musical notation on a five-line staff. The key signature has one sharp (F#). The time signature is 8/8. The melody consists of three measures, each containing a triplet of eighth notes. The notes are G4, A4, and B4. Below the staff, the lyrics "mim H.° ~~h.°~~ H.° lam mim mim" are written under the three measures.

Handwritten musical notation on a five-line staff. The key signature has one sharp (F#). The time signature is 8/8. The melody consists of three measures, each containing a triplet of eighth notes. The notes are G4, A4, and B4. Below the staff, the lyrics "Do lam RE — SR SI" are written under the three measures.

Handwritten musical notation on a five-line staff. The key signature has one sharp (F#). The time signature is 8/8. The melody consists of three measures, each containing a triplet of eighth notes. The notes are G4, A4, and B4. Below the staff, the lyrics "SI — SI — mim" are written under the three measures.

8

SI — SI — mim — lolo, mim

SI — SI —

mim SI

SI SI mim mim SI mim 8