

12 Après la cloche. - 2 } Montant - Basse.

13 Particular direction - Cimetière Dialogue  
(Basse)

14 Gross. (Zwangs) - Basse -

15 My son - se Montant

Richard My name 2<sup>em</sup> Montant

15 \* \*

14 Ηχο από Κόστακας & DAVID -- (Basse)  
Ευχαρία στον θάνατο & Μπαρτό.

Monologos - POISON! (Montant)

TENS οι γυναικες DAVID -

1

15

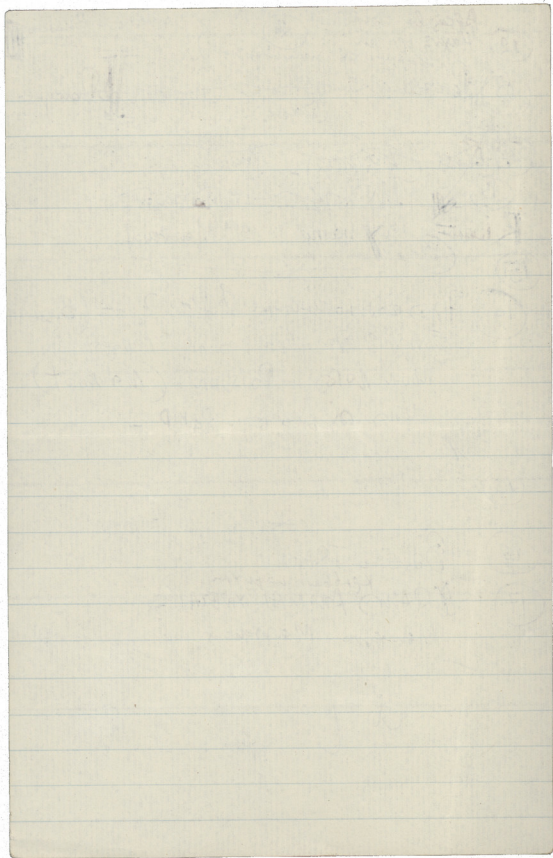
\*

16 Bois. - TRAIN.

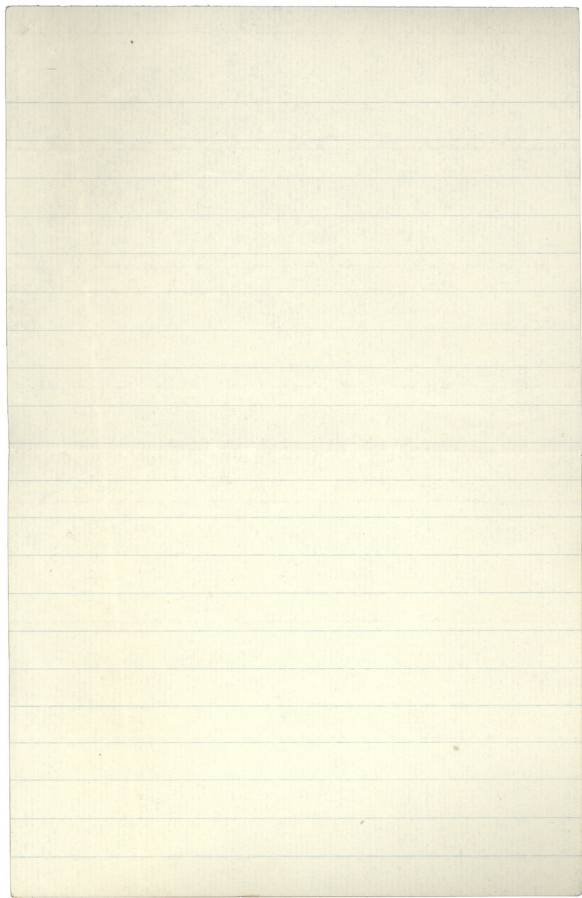
17 ΦΑΝΟΣ ΠΡΟΜΑΡΤΥΜΕΤΑΙ

Mouvements Montant

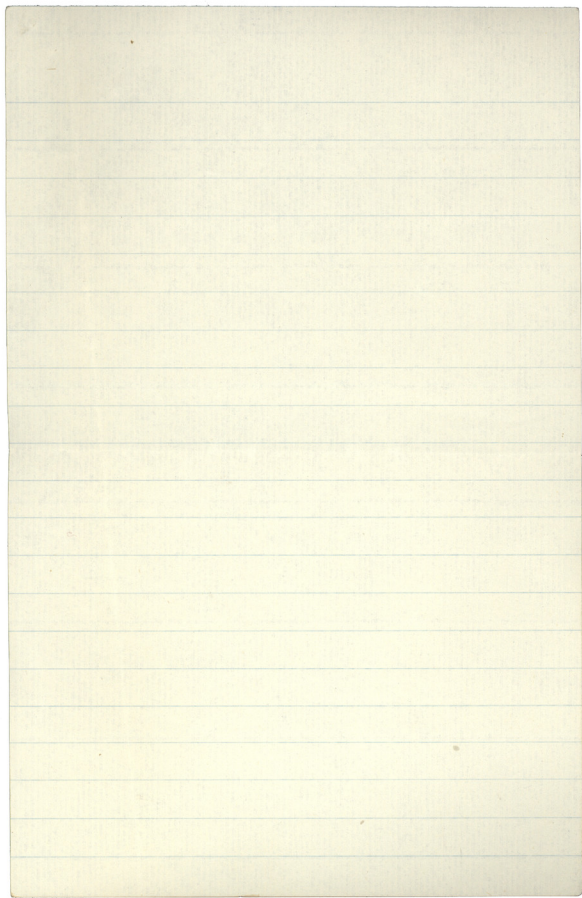
u l





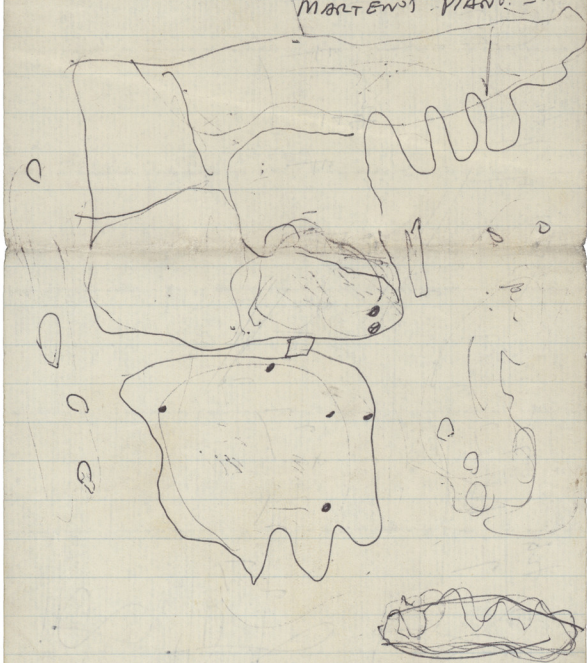






[ JANNETTE - LA MAIN AVEC DU SANG  
ENTREE DE SA FEMME ]

DOCTEUR TOLD. : ( GROSSE PLAN )  
MARTENS. PIANO. -



Handwritten musical notation on a five-line staff. The notation includes a treble clef, a key signature of one flat (B-flat), and a common time signature (C). The notes are written in a cursive style. Above the staff, the word "fid" is written in the first measure, and "Hum" is written above the second measure. The notes are connected by stems and beams, with some notes having flags. There are several slurs and ties. A double slash is drawn across the staff between the first and second measures. The notation ends with a double bar line.

Handwritten musical notation on a five-line staff, continuing from the first staff. It features a treble clef, a key signature of one flat, and a common time signature. The notation includes notes with stems and beams, some with flags. Above the staff, the word "Hum" is written twice. There are several slurs and ties. A double slash is drawn across the staff between the first and second measures. The notation ends with a double bar line.

Handwritten musical notation on a five-line staff, consisting of a treble clef and a single horizontal line drawn across the staff, possibly representing a rest or a specific musical instruction.



① Small ~~enjoy~~ (2) ~~Smurvan~~ } ~~Alto~~ <sup>5 pils</sup> ~~avari~~ <sup>raparsa</sup> }

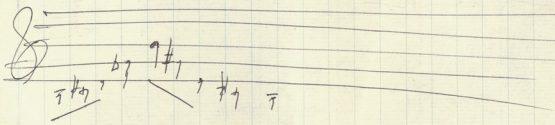
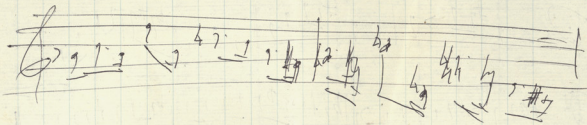
More ( mentally part )

Part 1-2 ( Alto part )

Alto

A single staff of handwritten musical notation. It begins with a double bar line. The notation consists of a series of vertical lines (possibly stems or flags) followed by notes with stems. The notes are mostly quarter notes and eighth notes, with some beaming. The staff ends with a double bar line.

Two staves of handwritten musical notation. The top staff contains a melodic line with notes and stems, including some beaming. The bottom staff contains a bass line with notes and stems, including a sharp sign (#) and a flat sign (b). The two staves are connected by a brace on the left side.

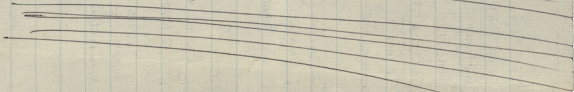
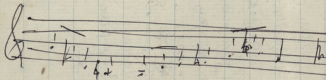
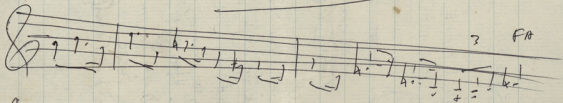


- ① TITRES \*
- ② ENTREE DANS LA VILLA .. SORTIE SUR LA TERRACE
- ~~③~~ ~~SA MAIN~~ \*
- ③ ANETTE! → - ENTREE DE SA FEMME
- ⑤ DOCTEUR TOLD - WISKY. (MARTENOT)
- ⑥ <sup>La zone</sup> LE NOUVEAU (il est blanc) (MARTENOT) - CAR
- ~~⑦~~ ~~...~~ ~~(Marteno?)~~ ~~(MARTENOT)~~
- \*
- ⑦ ΣΗΚΟΝΕΤΑΙ (MARTENOT) (Pint) (Basse) (Marteno?)
- ⑧ IL COMMENCE A CE PROMENER ...  
 [ Basse - Marteno? ] = ΧΑΝΣΙ ΜΙ  
 ni p... ni pi... }  


---
- ⑨ Pitstree? (Marteno?)  
 (Ays are don... ni avaka)  
 (Marteno? - Basse - Marteno?)
- ⑩ Max ↔ Δορτα (Basse) (2)  
 (Enxepi ni... Max Kopt...)
- ⑪ Who is that? (Basse) - TATA (2)

\*

Piano solo



FACES IN THE DARK

Handwritten musical notation on a single staff, featuring a treble clef, a key signature of one flat, and a 3/4 time signature. The notation includes a series of notes and rests, with a bar line.

Handwritten musical notation on a single staff, featuring a treble clef, a key signature of one flat, and a 3/4 time signature. The notation includes a series of notes and rests, with a bar line.

Handwritten musical notation on a single staff, featuring a treble clef, a key signature of one flat, and a 3/4 time signature. The notation includes a series of notes and rests, with a bar line.

Handwritten musical notation on a single staff, featuring a treble clef, a key signature of one flat, and a 3/4 time signature. The notation includes a series of notes and rests, with a bar line.

Handwritten musical notation on a single staff, featuring a treble clef, a key signature of one flat, and a 3/4 time signature. The notation includes a series of notes and rests, with a bar line.

Multiple empty musical staves on the page, arranged in a vertical column.

' THE FACE IN THE DARK.

(A) MANDOLIN

①

②

③

④

⑤

⑥

⑦

⑧

(B) CONTRABASS

①

②

③

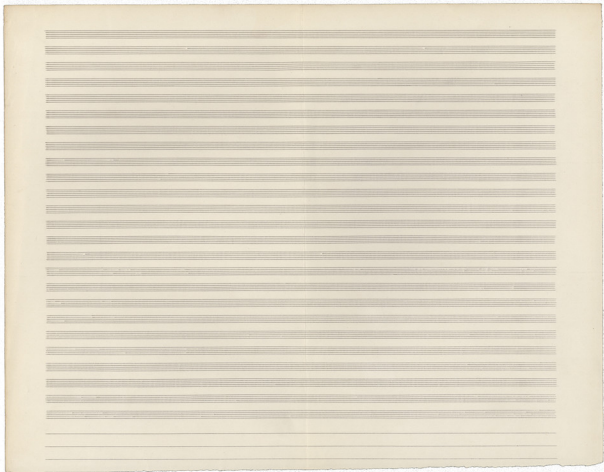
④

⑤

⑥

⑦

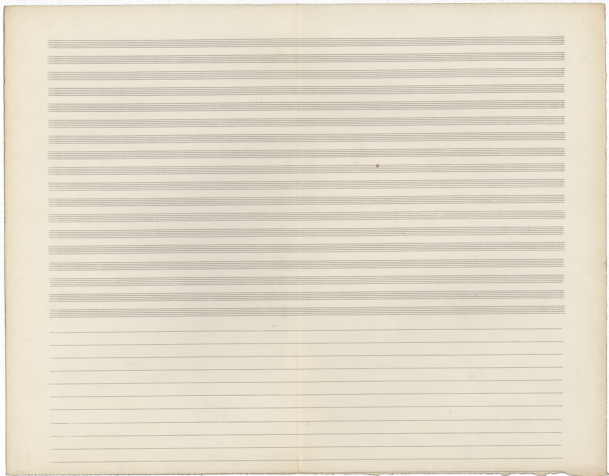
⑧





llh

~~ff~~ , , , | b7 , 27 | x )



Cam<sup>e</sup> a s

A	A	A	B
A	A	B	B
A	B	B	B

or

Handwritten musical notation on a five-line staff, featuring various notes, rests, and a double bar line. The notation includes a treble clef and a key signature of one flat.

Handwritten musical notation on a five-line staff, featuring various notes, rests, and a double bar line. The notation includes a treble clef and a key signature of one flat.

Handwritten musical notation on a five-line staff, featuring various notes, rests, and a double bar line. The notation includes a treble clef and a key signature of one flat.

Handwritten musical notation on a five-line staff, featuring various notes, rests, and a double bar line. The notation includes a treble clef and a key signature of one flat.

Handwritten musical notation on a five-line staff, featuring various notes, rests, and a double bar line. The notation includes a treble clef and a key signature of one flat.

Seven empty five-line musical staves, providing space for further handwritten notation.

Handwritten musical notation for the first system, measures 1-8. The system includes three staves: *Violin I*, *Violin II*, and *Cello*. The time signature is 8/8. Measure numbers 4, 8, 12, 16, 20, 24, and 28 are indicated above the staves. The notation consists of rhythmic patterns and stems with flags.

Handwritten musical notation for the second system, measures 32-40. The system includes two staves. Measure numbers 32, 36, 40, and 44 are indicated above the staves. The notation includes rhythmic patterns and stems with flags.

Handwritten musical notation for the third system, measures 44-52. The system includes two staves. Measure numbers 44, 48, 52, 56, 60, and 64 are indicated above the staves. The notation includes rhythmic patterns and stems with flags.

Handwritten musical notation for the fourth system, measures 64-72. The system includes one staff. Measure numbers 64, 68, 72, 76, 80, 84, 88, and 92 are indicated above the staff. The notation includes rhythmic patterns and stems with flags.

Five empty musical staves at the bottom of the page, intended for further notation.

