

MIKIS THEODORAKIS

KOSTAS KARIOTAKIS

OPERA

"A DEW ACTS"

PARTICIPATION BY CHORO

	Pages
I PRISONIERS	68-89
II SOLDATS - PAYSANS	102-121
III PARTISANS (ANDARTES)	129-150
IV CONTEMPORAINS	154-163
V SOLDATS - PEUPLE	165-182
VI PEUPLE	209-247

ΜΙΚΗΣ ΘΕΟΔΩΡΑΚΗΣ

“ ΚΩΣΤΑΣ ΚΑΡΩΤΑΚΗΣ ”

ΟΠΕΡΑ ΣΕ ΔΥΟ ΠΡΑΞΕΙΣ

ΤΑ ΠΡΟΣΩΠΑ

Ο ΠΟΙΗΤΗΣ, Βαρύτος
 ΔΙΟΝΥΣΟΣ, Μπαίος
 Η ΡΩΜΗΟΣΩΝΗ, Αλτο
 ΦΑΙΔΡΑ, Σοπράνο
 ΔΗΜΟΣΙΟΓΡΑΦΟΣ, Τενόρος
 ΠΟΝΗΝΤΕΣ, Τενόρος
 ΒΑΣΙΛΕΥΣ ΟΘΩΝ και ΠΑΥΛΟΣ, Τενόρος
 ΒΑΣΙΛΙΣΣΑ ΑΜΑΛΙΑ και ΦΡΕΙΔΕΡΙΚΗ, Σοπράνο
 ΑΞΙΩΜΑΤΙΚΟΣ, Βαρίτιος
 ΚΑΠΕΤΑΝΙΟΣ, Τενόρος
 ΣΤΡΑΤΙΩΤΕΣ
 Λαός. (Τετραφωνία Χορωδία)
 ΑΓΓΕΛΟΣ - Τενόρος

(ΤΑ ΚΕΙΜΕΝΑ ΕΙΝΑΙ ΤΟΥ ΚΩΣΤΑ ΚΑΡΩΤΑΚΗ
 ΤΩ ΚΩΣΤΑ ΒΑΡΩΛΗ ΚΑΙ ΤΩ ΣΩΜΑΤΗ)

ΜΙΚΗΣ ΘΕΟΔΩΡΑΚΗΣ
« ΚΩΣΤΑΣ ΚΑΡΩΤΑΚΗΣ »

ΟΜΕΡΑ ΣΤΕ ΘΥΝ ΠΡΑ ΣΕΙΣ

topoi ♩ = 58

ΠΡΑΞΗ 1
ΣΚΗΝΗ 1

ΔΙΟΝΥΣΟΣ

Musical staff with a treble clef, a key signature of one flat (B-flat), and a common time signature (C). The staff contains a few notes and rests.

topoi ♩ = 58

PiANO

Musical staff with a treble clef, a key signature of one flat, and a common time signature. It features a piano accompaniment with chords and a melodic line. The word "PiANO" is written to the left of the staff.

5

Musical staff with a treble clef, a key signature of one flat, and a common time signature. It contains a melodic line with several notes.

Είμαι Δι. ο. υ. ο. υ. σ

Musical staff with a treble clef, a key signature of one flat, and a common time signature. It features a piano accompaniment with chords and a melodic line. The word "MAD" is written to the right of the staff.

10

Musical staff with a treble clef, a key signature of one flat, and a common time signature. It contains a melodic line with several notes.

Σὺ χυφτ τῷ

στὴ σαλ. νῆ λυ αὐ. τῷ

Musical staff with a treble clef, a key signature of one flat, and a common time signature. It features a piano accompaniment with chords and a melodic line.

Handwritten musical notation on a single staff with a treble clef and a key signature of one flat. The lyrics are: *Ὁς ἀκαταπαύστως ἔχει ἡμᾶς*

(b) Handwritten piano accompaniment for the first system, featuring a grand staff with treble and bass clefs. The music includes chords and melodic lines.

Handwritten musical notation on a single staff with a treble clef and a key signature of one flat. A triplet of eighth notes is marked with a '3'. The lyrics are: *Τὸ εὐαγγέλιον τῆς ἀγάπης τοῦ Θεοῦ τοῦ Πατρὸς καὶ τοῦ Υἱοῦ*

Handwritten piano accompaniment for the second system, featuring a grand staff with treble and bass clefs. The music includes chords and melodic lines.

Handwritten musical notation on a single staff with a treble clef and a key signature of one flat. The lyrics are: *καὶ τοῦ ἁγίου Πνεύματος τοῦ ἐκπορευομένου ἀπὸ τοῦ Πατρὸς καὶ τοῦ Υἱοῦ*

Handwritten piano accompaniment for the third system, featuring a grand staff with treble and bass clefs. The music includes chords and melodic lines.

Four sets of empty musical staves at the bottom of the page, consisting of grand staves with treble and bass clefs.

40

P G^b d > J | d J J J J J | q q >

Vn omi oKo. Va. e je-pi-ov b- to- nos

Δ Z_6 | | | | J J J

h- pu. mo.

P G^b = J J | J J J J | J J J J | J > >

Kui xpi qm he to Sui Xtu-to eov pous.

Δ J J J J | J > > | J J J J | J J J J

cu- va op qm vi he x eov. Ap.

45

P G^b | q | J J J J | q J J J J

H. tov- cu- tu xi- ope- va- to- te-h

Δ J J J J | J q | | |

Bpu ki- ko. va cu vaov. ti oev

65

P
 ε. Χυ νε Qu. ver το σα Χρ ισ την

A
 ce. ηγ. τα επα. ται δω

70

P
 τω πα κτε με νε τη ναι πα συ πα κλι στο

A
 το επα μα αυ το

Πολύ αργά λ. = 46

P
 ση ρε τη φι Χρ ισ τι μο στο

A
 σας Αφ ηι ναι ναι ο νο ν

f

ΠΟΙΗΤΗΣ

Δεν φαίνομαι στον κόσμο σου. Τρα γέφυρα να τὴν βυχθῆται ἀπὸ

75

75

80

Κέρ. ἔχει σπῆ-σαν. Τὴν νύξιν Βυθῆν σου σπῆσαν. α.

80

80

Μα. τί. ἦτα γὰρ. ἦτα ἦτα. Μα. τί. καὶ ἦτα. ἦτα. ἦτα. ἦτα.

80

n

eu. pe. w. e. pi. pi. ka. ur. pe.

n

ka. pi. pi. sou. X'ri. ou. Δev. Tpa. pi. Δev. Tpa. pi. o

85

12

Δev. Tpa. Av. pi. pi. pe. Sou. pi. o. sou. Tpa. po. Sou.

Handwritten musical score for the first system. It consists of a vocal line on a single staff and a piano accompaniment on two staves. The key signature is one sharp (F#) and the time signature is 12/8. The lyrics are in Greek: "ΜΕ. ΧΕ-ΤΕ ΚΑΙ ΦΙ - - - ΤΟ ΤΩ ΚΥ-ΘΥ. ΚΑΙ ΟΥΚ ΟΥΚ ΕΙΜΙ ΥΠΟΧΡΩΣΤΟΙ". There are various musical notations including slurs, accents, and fingerings (e.g., 3, 2, 2).

Handwritten musical score for the second system. It continues the vocal and piano parts from the first system. The lyrics are: "ΝΕΙ. ΤΕ. ΗΑΙ. Ο. ΤΕΩΝ ΑΡ-ΥΟ. ΤΕ ΠΑ ΦΑΙ. ΝΕΙ ΤΟ". There are musical notations such as slurs, accents, and fingerings (e.g., 2, 3, 2).

Handwritten musical score for the third system, concluding the piece. The lyrics are: "ΝΕ Ο. ΟΥΚ ΦΙΛΙ - - - ΤΟ. ΟΥΚ-ΠΛΗΘΗ ΚΑ-ΚΗΘΑ. ΤΟ -". There are musical notations including slurs, accents, and fingerings (e.g., 2, 2).

95

Handwritten musical notation for the first system, featuring a vocal line and a piano accompaniment. The vocal line includes the lyrics "paq juo va. Xa- eai Te".

Piano accompaniment for the first system, showing complex chordal textures and melodic lines.

Handwritten musical notation for the second system, featuring a vocal line and a piano accompaniment. The vocal line includes the lyrics "Kra qoo tou era. De rraa pa va te. yua. nio. ja."

Piano accompaniment for the second system, including a triplet of eighth notes in the right hand and a triplet of eighth notes in the left hand.

Handwritten musical notation for the third system, featuring a vocal line and a piano accompaniment. The vocal line includes the lyrics "ni oio Ta. qe. Et pa ka. ta e. du. pa oia nio. on"

Piano accompaniment for the third system, featuring a prominent melodic line in the right hand and a bass line in the left hand.

(100)

Ε γιο-ις- γω-τε. Ρο- γ'ι-α- τε Σε θε- ος αι- γου- ην ου

ο. Των θε- ος. Χε-τε κ'ε- ρις. α.

(105)

Κο. ηα. ηρο. ονε ροι ου

Αρραγορα δ' Ανομοδ
ηρα αιρα σκοτισα

DIONIZOS

W-
c

Mnai-ver. ó San.ta. si. o. xpe pas os EPT!

Allegro Moderato ♩ = 84

ΔΙΑΡΧΩΣ ΜΕ ΠΑΡΟΣ

ΠΟΙΝΤΗΣ

Allegro Moderato ♩ = 84

Καζο νεπαρκαριτ Καπουζιανου

Δr

⑤ Β. f m ος Β. f m va Kou Bev.

π

25

4/4

Ti sup-ra-ris ñ e-rao p'no' tro o-vo p'p'rae

4/4

ta k'ni p'p'ri-voi

7/8

h'pa ni- p'ro' p'p'rae a-

4/4 (30)

av-to-ak'ri-b'us me' p'p'rae-ko'ni ta' say

7/8

pa'ni'k'us'ri

ΔΗ

παι

Mi-

ΔΗ

παι δι' οτι ποσ' ηρωδης αε-ρα ποσ' vi α εως

οι α φε α. Τεγ. α. δε. πο

38

ΔΗ

παι von va- kai- souv δε-στα- ηε πε ες

To ψως

40

ΔΗ

1. Ου-φί-κί ου-το-κτο-υί-ου 55

ΠΟΙ

ΔΗ

0-μύ-νη τέ 809-85-709-α-ε-ρα 60

ΠΟΙ

Τι-να-ρωί

ΔΗ

ηώς αιθέρης Τι νόμιστ' τε δι' γαίης ημάς ηριανόταθ' 65

ΠΟΙ

ΔΗ.

ὦ- τὲ-ρσ- Χρῆ! ἡμ-νο-σῶ-ν-τ' ἵ-ε-ρ-α-ρ-ε

Ποι

Ἰ-ε-σοῦ-τε-κα-ρ-ε

ΔΗ.

ἡ-μῶ-ν-τε-ροῦ

Ποι

ἡ-μῶ-ν-τε-ροῦ

ΔΗ.

(75)

Ποι

το-τὲ-ροῦ καὶ ἡμῶ-ν ἡ-α-ρ-χῆ το-τὲ-ροῦ

ΔΗ.

95

αύ-τολ ται τει. κα Χορ. ται ο έρω-κός

ΔΗ.

100

Α γυ. αν. ται. α. ε. π. α. α. τες ου αυ-

Ποι. ται. τα. τος

ΔΗ.

5

5

υι. χθ. α. τω ηρω. πο. η. τος τωγ το ηρω. πο. η. τος. α. τω. χθ. πο. η. τος. η. τος. ε. ο. υ. ο. η. τος.

Ποι.

ΔΗ

5

6

2

701

α-φί-ε-ρω. η-ε-ρ-ο-φί-λη-τος. ε-στί. Μι-ση-λ-ος

105

ΔΗ

6

110

701

Ζη-η-σα-τε. Κε-ε-νο-σπ-ι-ρι-τι-σ-μα. το. Α-γι-ου. Π-νε-υ-μα-τος. το. Κ-υ-ρι-ου. και. θε-ου. Πα-τρο-ς. Η-με-τε-ρ-ου. Ι-η-σο-υ. Χ-ρισ-τού. το. υ-ι-ου. το-υ. Θε-ου. το. Κ-υ-ρι-ου. και. Κ-ο-υ-ν-ου. το-υ. Πα-τρο-ς. ο-ν. ο-ρα-ει. η-με-τε-ρα. τα. ο-υ-ρα-να.

Αδελφισ ο. = 52

ΔΗ

701

Οι υ-ιοι. της. γ-α-ρ-ίας. ο-ν. του.

ΔΗ

του - νων κα - τε του - νων ουκ ουκ ην ου - ου ου - ου ου - ου ου - ου ου

ΠΜ

5

ΔΗ

10

ου - ου ου - ου ου - ου ου - ου ου - ου ου - ου ου

ΠΜ

Αν - τω - νω ου - ου ου - ου ου - ου ου - ου ου - ου ου - ου ου

15

ου - ου ου - ου ου - ου ου - ου ου - ου ου - ου ου

ου - ου ου - ου ου - ου ου - ου ου - ου ου - ου ου

ΔΗ 24

ΚΑ-ΤΟΥ-ΤΟΥ-ΟΤΙΣ ΚΑ-ΡΕ ΚΙ-ΕΥ ΜΟΡ ΤΟΥ-
 ΠΡΟΣ ΤΟ ΧΩ ΟΣ ΤΟΥ ΚΙ-ΕΥ ΚΑ ΠΕ ΤΟ ΚΙ-ΕΥ

ΔΗ 25

ΠΟΥ ΤΟΥ Α-ΣΙ-Α-ΣΑ ΚΑΙ ΧΑΡ ΤΙΑ ΧΩ ΠΙΣ ΑΙ-ΤΙ-ΑΙ
 ΤΩ ΠΟ ΤΕ ΣΙ-ΟΥ ΤΟΥ ΟΙ-ΘΕ-ΑΙ ΠΕ-ΣΙ-ΟΥ ΤΟΥ ΑΙ

ΔΗ 30

ΑΥ ΤΗ-ΟΝ ΠΟΥ ΟΙ ΑΙ-ΤΗ ΤΟ ΓΥΝΑ-ΚΙ-ΑΙ Ε-ΧΩ ΜΟΥ
 ΕΚΕ-ΠΟΣ-ΦΑ-ΡΑΙ-ΤΗ-ΣΕ ΠΑΙ ΚΙ-Ε-Υ ΠΡΕ-ΠΕΙ ΤΟ ΜΟΥ ΜΟΥ-ΕΤΑ-ΚΟ-ΜΟΥ

35

ΔΗ

ΤΗΥ ΤΙ. ΜΑΥ. ΣΙΝ. ΒΕ. ΕΝ. Ω. ΥΟΥ

ΠΩ

ΥΕ. ΤΟ. ΓΑΙ. ΠΑ. ΜΑ. / Ε. ΜΟΥ. Τ. ΕΥΣ. ΕΕ. ΗΙ. ΓΑ. ΝΑ. ΝΙ. ΜΑΥ. ΚΑΥ.

Detailed description: This system contains three staves. The top staff is a vocal line in G major, starting with a treble clef and a key signature of one flat (F major). It contains the lyrics 'ΤΗΥ ΤΙ. ΜΑΥ. ΣΙΝ. ΒΕ. ΕΝ. Ω. ΥΟΥ'. The middle staff is a piano line in G major, starting with a bass clef and a key signature of one flat (F major), with the lyrics 'ΥΕ. ΤΟ. ΓΑΙ. ΠΑ. ΜΑ. / Ε. ΜΟΥ. Τ. ΕΥΣ. ΕΕ. ΗΙ. ΓΑ. ΝΑ. ΝΙ. ΜΑΥ. ΚΑΥ.'. The bottom staff is a grand staff with piano accompaniment, showing chords and melodic lines for the right and left hands.

40

ΔΗ

ΚΑΥ. ΜΑ. ΥΕ. ΧΑ. ΗΙ. ΤΑ. ΜΑ. ΤΑΥ. ΕΙ. ΟΥ. ΠΕ. ΥΕ

ΠΩ

ΜΑ. ΜΥ. ΣΕ. ΗΙ. ΣΕ. ΗΙ. ΝΑ

Detailed description: This system contains three staves. The top staff is a vocal line in G major, starting with a treble clef and a key signature of one flat (F major). It contains the lyrics 'ΚΑΥ. ΜΑ. ΥΕ. ΧΑ. ΗΙ. ΤΑ. ΜΑ. ΤΑΥ. ΕΙ. ΟΥ. ΠΕ. ΥΕ'. The middle staff is a piano line in G major, starting with a bass clef and a key signature of one flat (F major), with the lyrics 'ΜΑ. ΜΥ. ΣΕ. ΗΙ. ΣΕ. ΗΙ. ΝΑ'. The bottom staff is a grand staff with piano accompaniment, showing chords and melodic lines for the right and left hands.

45

ΔΗ

Ο. ΤΑΥ. ΕΝ. ΝΑ. ΦΑ. ΠΙ. ΛΟΥ. ΥΕ. ΤΑΥ. ΣΠΙ. ΜΟΥ. ΤΑ. ΡΑΥ. ΟΥ. ΟΥΣ. ΟΥ. Χ.

ΠΩ

Detailed description: This system contains three staves. The top staff is a vocal line in G major, starting with a treble clef and a key signature of one flat (F major). It contains the lyrics 'Ο. ΤΑΥ. ΕΝ. ΝΑ. ΦΑ. ΠΙ. ΛΟΥ. ΥΕ. ΤΑΥ. ΣΠΙ. ΜΟΥ. ΤΑ. ΡΑΥ. ΟΥ. ΟΥΣ. ΟΥ. Χ.'. The middle staff is a piano line in G major, starting with a bass clef and a key signature of one flat (F major). The bottom staff is a grand staff with piano accompaniment, showing chords and melodic lines for the right and left hands.

ΔΗ

50

ηοι Χιθι Το Βραυ Συ. εις. αχ. τω σαν κερδω. σφρ - νοι

δ'αυτη τι

ΔΗ

55

ηοι

Χυπητοι Δι - ο - νυ. σοι. Τι. ται ves και. ηορ ves ηερ vai - ες Υ. σφες. και Ε - φι.

60

ηοι

ηοιε νωμ και στω νε σκεν - τω. τω. τω νω

- αϊτες ον κυ - ον κυ - βρε νων

δ ηοι η - τας

DH

65

ημς σφε-λι-των-των ου-ραν-ων και της
 τω-ν ω-μων ου-

κα-τω-θεν ης ου-ρα-νος

DH

και υ-ων των ου-ραν-ων και της
 ου-ρας

ου-ραν-ων και της ου-ρας

DH 70

Più appoi

ης ου-ραν-ων και της ου-ρας

Απ' Ουρα-νου και της ου-ρας

Piu Lento d. = 48

Dionysos

και νε-κρω-των

- 27

Διο. (75)

Handwritten musical score for Διο. (75). The score is written on a grand staff with a vocal line and piano accompaniment. The key signature is one sharp (F#) and the time signature is 4/4. The lyrics are: "πο- το σοσ αφ- ηου - Κου, η- γε σορ- οση σο." The piano part features chords and some melodic lines in the left hand.

Διο

(80)

Handwritten musical score for Διο (80). The score is written on a grand staff with a vocal line and piano accompaniment. The key signature is one sharp (F#) and the time signature is 4/4. The lyrics are: "vi kai η- γε σα τω". The piano part features chords and some melodic lines in the left hand.

Διο

Handwritten musical score for Διο. The score is written on a grand staff with a vocal line and piano accompaniment. The key signature is one sharp (F#) and the time signature is 4/4. The lyrics are: "του. σι η- κροι. ο- των. εη- σω. οι". The piano part features chords and some melodic lines in the left hand.

Piano accompaniment for Διο. The score is written on a grand staff. The key signature is one sharp (F#) and the time signature is 4/4. The piano part features chords and some melodic lines in the left hand.

410. (85)

Xp - - - Vol ka. ve-tiv no- vo soo

410 (90)

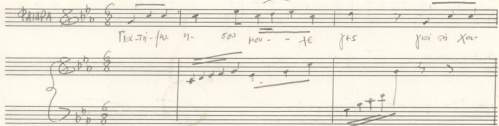
ae - - - na kai ne-to-ve ten you-ten - - -

(95)

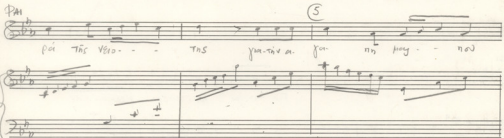
Si - - - Maui-va-i-pai Spa

ΣΚΗΝΗ 2

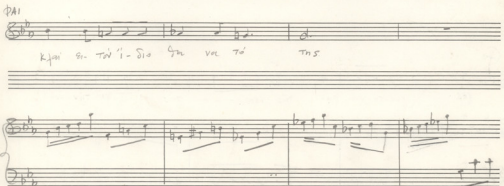
♩. = 54

ΠΑΡΑ 

Πα-τη-φω η- σοο ηου- - τε γης γαι ος Χου-

ΠΑΙ 

γαι της νεο- - - της γου-νι α. γου ηη ηου- - ηου

ΠΑΙ 

και οη τω'ι-δω ου νοε το της

10

15

19

For - ti - fu - ti - us coe - li et

20

yes - u - chi - pa - tris ve - ro - - - tus qui ter - ce -

(25)

you - my - pas - nei - kai - se - tou - i - dio - you - va - to

Tris

Tris

(30)

ke - - - va - mia - o - xri

Ph.

35

tra ha- tie- en

Ph.

ne voi ce a - va-je-ns a. va. jet.

Ph.

40

ni H. tis par Spi- ritu a - - va-ri-

Φ41

Handwritten musical notation for the first system, featuring a vocal line and piano accompaniment. The lyrics are: Χρὸς Ἡ. Ἰησοῦ ἁγίου Σπὶτος ἀν' ἑα. . . υἱοῦ Χρὸς πα. πα. ἁγ.

Empty musical staff lines.

Handwritten musical notation for the second system, featuring a vocal line and piano accompaniment.

Empty musical staff lines.

45

Handwritten musical notation for the third system, featuring a vocal line and piano accompaniment. The lyrics are: πο. ἁ. Χρὸς ἁγ.

Empty musical staff lines.

Handwritten musical notation for the fourth system, featuring a vocal line and piano accompaniment.

Empty musical staff lines.

Handwritten musical notation for the fifth system, featuring a vocal line and piano accompaniment. It includes tempo markings: *Allegro* and *Andante* (50). The lyrics are: ἁγ. ἁγ. ἁγ. ἁγ.

Empty musical staff lines.

♩ 4/4 (55)

o - noi - a - nis A - nae bo - nae opti - mas

♩ 4/4 (60)

he cae se nae pa - se ves o - m - ni - si - es e - ju

♩ 4/4 (65)

o - m - ni - a - que in cae - lis i - us h - o - nae pa - tris qui se - dit ad dex - te - ram pa - tris

ΔΗΜ.

70

Handwritten musical score for the first system. The top staff is a treble clef with a circled '70' above it. The bottom staff is a piano accompaniment with various chords and accidentals, including flats and naturals. There are some scribbles and corrections in the piano part.

ΔΗΜ.

Handwritten musical score for the second system. The top staff is a treble clef. The bottom staff is a piano accompaniment with complex rhythmic patterns and accidentals, including flats and naturals. There are some scribbles and corrections in the piano part.

ΔΗΜ.

Handwritten musical score for the third system. The top staff is a treble clef with a '3' above it. The bottom staff is a piano accompaniment. The Greek lyrics "I va-t-pu. tu ka. ce nos." are written below the treble staff. There are some scribbles and corrections in the piano part.

♩ = 120

75

Tutti

si - yon pa sa - pa - ja - kaw - oca

♩ = 120

79

no - va - xi - tu

o - tu - pro - pter - tu - m - i - e -

80

80

pa - oca

Tu - ti - tu - m - i - e -

Allegro $\text{♩} = 92$

Ф#1

Handwritten musical score for the first system. It includes a vocal line and a piano accompaniment. The vocal line starts with the lyrics "E-Su Si-nja su" and includes the instruction "rit. su;". The piano accompaniment features a 3/4 time signature and various chordal textures.

Ф#1

Handwritten musical score for the second system. It includes a vocal line with the lyrics "Δε ητ Βη-ης;" and a piano accompaniment. The piano part continues with complex chordal patterns.

Handwritten musical score for the third system, featuring a piano accompaniment. A circled number "5" is written above the staff. The piano part consists of intricate chordal and melodic lines.

Ф#1

Handwritten musical score for the fourth system. It includes a vocal line with the lyrics "ne-er. noo" and "He-su-va. Sei-ovv" and a piano accompaniment. The piano part continues with complex chordal textures.

Handwritten musical score for the fifth system, featuring a piano accompaniment. The piano part continues with intricate chordal and melodic lines.

ΦΗ

Τοι μέγα Ποταμίηγ ε-να πέλω-ας

Αχ. ο-ο. Το Σπαγο. οο.

ΦΗ

Αλλοζορρ.

w-vi-οο

Τι-δύ-λο-βίε-νετε

ΔΗΗ

Κυ-οίε. Κα-ρωω. Τί κα ;

Κυ-οίε. Κα-ρωω. Τί κα ;

Ε.τ.ην τοχο πο' τον Ζαφ.γ.ωο

ΠΟΙΗ

Vol Tai X' pei-u. pe ta va. en. *Rall*

ΦΑΙΛΑ. ΔΗΜΟΣ. Δ. = 60 (Δ = 24)

ΠΟΙΗ

Τι - - - - - VE - οί

Τι VE οί- ης φτα εν πεν. Ε. Σι

20

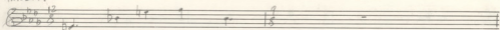
ΠΑΙ. ΔΗΜ.

ΠΟΙΗ

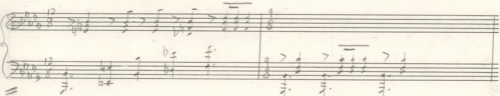
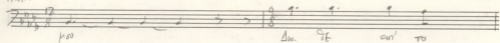
Οπ. " Ερ. πο- να. σι ορδ Χη. ποσ Ται. Κορ -

25

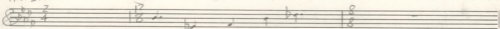
ΦΑΙ. ΔΗΜ.



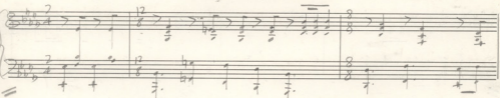
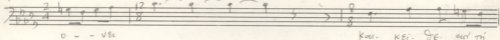
ΠΟΗ.



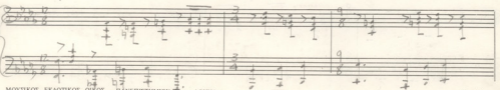
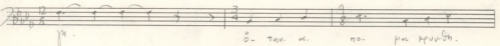
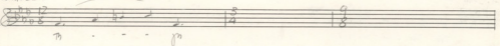
ΦΑΙ. ΔΗΜ.



ΠΟΗ.



ΦΑΙ. ΔΗΜ.



ΦΑΙ. ΔΗΜ.

35

ΠΩΗ. 6 12
 ΚΕΝ. Ο. ΤΕ ΉΒ. ΤΟΥ. ΟΣ. ΜΟΥ ΦΙ. ΤΟΣ

ΦΑΙ. ΔΗΜ.

ΠΩΗ. 6 12
 ΗΡ ΘΥ ΠΕ Α ΓΥ ΤΕ ΣΕΡ. ΒΑ. ΤΡΑΣ ΣΕΡ. ΒΟΥ. ΤΟΥ

ΗΡ ΘΥ ΠΕ. ΑΙ. ΓΥ. ΤΕ. ΣΕΡ. ΒΑ. ΤΡΑΣ

ΦΑΙ. ΔΗΜ. 46

ΤΩ ΑΙ. Ω. ΒΙ. Α. ΠΗ. ΓΗ

ΤΩ ΑΙ. Ω. ΒΙ. Α. ΠΗ. ΓΗ

ΔΗΜΟΣ.

(Μπαλάντα τρέχουσα ή Ρεθμοζώνη γκαστριανή. Της κομπι : Πανετίου. Ο Αντιστρωφός είναι κτητός)

(2422113) ♩ = 100

(45)

δ - Κίρι ος. υ. ου. παρ' ης

ΡΕΘΜΟΣ.

(5)

P2M.

Handwritten musical notation for the first system. It consists of a vocal line (treble clef) and a piano accompaniment (grand staff). The vocal line has lyrics: "ПОИМЪ АГО-ТЪ ПЪЛЪНЪ ТЪ ХЪ И ТЪ" and "СЪ ПЪЛЪНЪ СЪ. ТЪ-НЪ СЪ." The piano accompaniment features chords with sharp signs (#) and some notes with accents (>).

Handwritten musical notation for the second system, continuing the vocal and piano parts from the first system. The piano accompaniment includes various chord voicings and rhythmic patterns.

P2M.

Handwritten musical notation for the third system, showing a vocal line (treble clef) and a piano accompaniment (grand staff). The vocal line is mostly blank with a circled number "55" above it.

Handwritten musical notation for the vocal line of the third system. It includes lyrics: "СЪ ПЪЛЪНЪ СЪ ПЪЛЪНЪ СЪ" and "Ka". There are notes with sharp signs (#) and accents (>).

Handwritten musical notation for the piano accompaniment of the third system. It shows complex chord structures with sharp signs (#) and flat signs (b) across the grand staff.

P2M.

Handwritten musical notation for the fourth system, showing a vocal line (treble clef) and a piano accompaniment (grand staff). The vocal line has lyrics: "О-ВЪ-ПЪЛЪНЪ ПЪЛЪНЪ СЪ-ВЪ" and "КЛАВ-".

Handwritten musical notation for the vocal line of the fourth system. It includes lyrics: "О-ВЪ-ПЪЛЪНЪ ПЪЛЪНЪ СЪ-ВЪ" and "КЛАВ-". There are notes with sharp signs (#) and flat signs (b).

Handwritten musical notation for the piano accompaniment of the fourth system. It shows complex chord structures with sharp signs (#) and flat signs (b) across the grand staff.

Ρομ. 60

3

(Βασίλειο)

Handwritten musical notation for the first system, including a treble clef, a 9/8 time signature, and a key signature of one sharp (F#).

Handwritten musical notation for the second system, including a bass clef and the lyrics: "Τὸς δὲ Τύ-θης, ἢ Κου-υῦ γὰρ".

Handwritten musical notation for the third system, including a treble clef and a bass clef, with various chordal textures and accidentals.

ΦΑΙΔΡΑ (Πιπέρισιβ)

Handwritten musical notation for the fourth system, including a treble clef, a 9/8 time signature, and a key signature of one flat (Bb).

Handwritten musical notation for the fifth system, including a bass clef and the lyrics: "Μη - τι τῶν ναὶ καὶ υἱῶν ;".

Handwritten musical notation for the sixth system, including a treble clef and a bass clef, with the lyrics: "(ἀπὸ τῆς Πυρραμῆς) Α. - ηὶ σὺν".

Handwritten musical notation for the seventh system, including a bass clef and a 3/4 time signature.

65 *Mf. qoiav.*

Mf. a. nai tn. ces ;

Handwritten musical notation for the eighth system, including a treble clef and a bass clef, with various dynamic markings and accidentals.

P=H 16

76

Handwritten musical score for the first system. It consists of a vocal line and a piano accompaniment. The vocal line is in 3/4 time and contains the lyrics "oys op-ki-fo-". The piano accompaniment features a complex rhythmic pattern with many beamed notes and rests.

DAI

Handwritten musical score for the second system, labeled "DAI". It consists of a single line of music with a 3/4 time signature and a key signature of one flat.

P=H

Handwritten musical score for the third system, labeled "P=H". It consists of a single line of music with a 3/4 time signature and a key signature of one flat.

Handwritten musical score for the fourth system, labeled "P=H". It consists of a single line of music with a 3/4 time signature and a key signature of one flat. The lyrics "mae ku pie ka-puw-tai-ku ov-te-rov" are written below the notes.

Handwritten musical score for the fifth system. It consists of a vocal line and a piano accompaniment. The vocal line has lyrics "mae ku pie ka-puw-tai-ku ov-te-rov" and "Hoyyit". The piano accompaniment is complex with many beamed notes and rests.

Five empty musical staves at the bottom of the page, each consisting of a treble and bass clef staff.

75

ΦΑΙ.
 ΠΡΟΣΦΕΡΕ
 ΠΡΟΝΕΜΤΕΣ

ΠΡΟΝΕΜΤΕΣ
 (ηρώχαιρα σὺ βασανιστὴρ
 καὶ περιφρονῶν,
 ἔργα σὺ φησὶς)

ΠΟΗ.
 Πῶς ἔ-πυ-ρε αἴετ

O-vo-papapou kipi or Poo

ΠΡΟΝΕΜΤΕΣ
 ΝΕΥ ΤΕΣ !
 ΠΟΙ
 U-pu. nou jōs !
 Ε-σθῆ μοι γ-γι-τε ;

80

ΠΟΙ.
 U- nou, tu- tou
 85

ΦΑΙΔ

ΡΕΑ. Κωστα τι γες;

[Τον ερπυσια
κερε νεε ερπε]

ΠΟΗ

Φυγετε. Κιερ ε!

Πιρ. να. ερ. να. αε γο!

ΦΑΙΔΑ

(100)

ΡΕΑ

ΠΟΗ.

Δα υ. ρι. γα δ. Κο η ο σ

Αηωσσεσ ηι γο βαι ηε α. να ηε κ. ηι. ο. νυ.

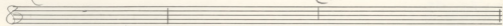
ΦΑΙΔ 2

ΠΟΗΤ.

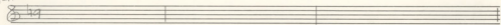
(100)

DM. 195

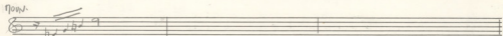
105



PM



005



PM

Au-tis qu- te!

DM

105

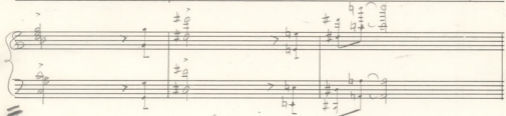
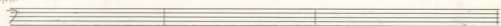


Ma-Sé

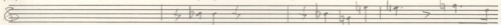
Je-hu-ri-So-ri

con RET

PM



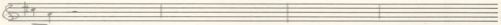
PM



0-X!

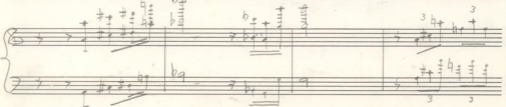
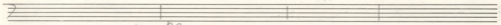
Et-er-nus ex-tis-ter-nus

DM



SE-COND

PM



ΦΑΙ.

Ρ.Σ.Μ. (110)

ΠΡΩΤΗ

ΤΟΣ

ΑΙ-ΝΕ-ΣΤΕ. ΠΡΟ-ΦΕ-ΡΕΙ-ΑΙ-ΤΗ-ΡΑΙ-Α-Ε-ΣΤΟ ΛΟ-Ο

ΠΡΩΤΗ

(110)

RET - SE-COND

ΦΑΙ

Ρ.Σ.Μ.

ΣΤΟΙ-ΧΟΣ ΤΩ ΑΓ-ΙΩ.

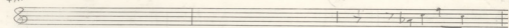
ΠΡΩΤΗ

(115)

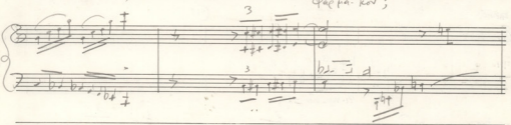
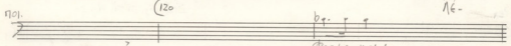
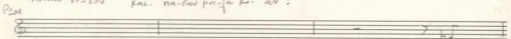
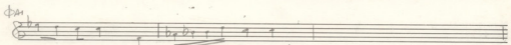
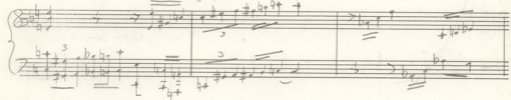
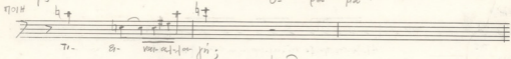
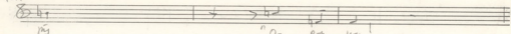
ΠΡΩΤΗ

ΤΙ ΣΕ-ΥΕΙ-ΑΙ-ΟΝ ΤΟ ;

ΦΑΙ.



ΡΕΜ



35

ΦΑΙ

oi El-to- ves!

ΡΕΜ

ΠΟΙ

oi El-to ves!

Kai mo-i-tni pou you s; Λε.

ΦΑΙ

A-e po vai you!

ΡΕΜ

ΠΟΙ

A-e po vai you!

A. vai-you

Au-tis se ka-te-om-ef

ΚΑΡ.

Handwritten musical score for the first system. It features a vocal line and a piano accompaniment. The vocal line is in G major and includes the lyrics: "Ε. ΠΑΡ. ΑΡ. ΒΡΑΧΕ-ΤΕ-ΓΙΑΤΟ ΜΗ- ΔΩ ΚΑΙ ΤΙ ΟΥΔΕ-ΡΟ ΜΥ!". The piano accompaniment consists of chords in the left hand and a melodic line in the right hand. A large orange 'U' is written above the staff.

ΠΟΥΝ

Allegro ♩ = 96

Handwritten musical score for the second system. It features a vocal line and a piano accompaniment. The vocal line includes the lyrics: "Ε. ΜΥ ΟΥΔΕ- ΤΙΣ". The piano accompaniment includes a triplet of eighth notes in the right hand and chords in the left hand. The tempo is marked *Allegro* with a quarter note equal to 96 beats per minute.

ΠΟΥΝ.

Handwritten musical score for the third system. It features a vocal line and a piano accompaniment. The vocal line includes the lyrics: "ΕΥΧΑ. ΠΑΡ. ΠΡ. ΟΥΔΕ-ΡΑ ΟΥ ΤΑΙ ΒΑ. ΝΟ-ΤΕ ΜΩ ΣΙ ΚΑ. ΠΙΥ- ΤΩΥ". The piano accompaniment includes a triplet of eighth notes in the right hand and chords in the left hand.

Мушн

Handwritten musical score for the first system, labeled "Мушн". It features a vocal line with lyrics "o - pa kol - tov" and a piano accompaniment. The lyrics are written in Cyrillic. The score includes a treble clef, a key signature of one sharp (F#), and a 3/4 time signature. There are circled numbers 30 and 31 above the vocal line. The piano part includes bass clef, treble clef, and figured bass notation.

Мушн

Handwritten musical score for the second system, labeled "Мушн". It features a vocal line with lyrics "Tu - pa - no - kon - k - vou - ve" and "M - pa - fe - tu". The lyrics are written in Cyrillic. The score includes a treble clef, a key signature of one sharp (F#), and a 3/4 time signature. There are circled numbers 34 and 35 above the vocal line. The piano part includes bass clef, treble clef, and figured bass notation.

Мушн

Handwritten musical score for the third system, labeled "Мушн". It features a vocal line with lyrics "Tin ve - re - pa - oi - Gu - tu - ser" and "K - lai - ve - tu ai - an - ep - i - ste". The lyrics are written in Cyrillic. The score includes a treble clef, a key signature of one sharp (F#), and a 3/4 time signature. There is a circled number 35 above the vocal line. The piano part includes bass clef, treble clef, and figured bass notation.

PREMIERE PARTe Xofz Page
2 bar 7 (bar 2 of 56) - 56.

Meno mosso $\text{♩} = 84$ 561

10111111 560

MED. di. no. tra. Str. Xes. p. w. di. va. Str. w. TO Hfl. - 10V.

562 563

To XRES TOU. NOI. N. m

564 565 INSTRUMENTAL

10111111

di. va. TO au. pi. o. TOU KO. OFPO AV E-XES

to bar 13

Handwritten text at the top of the page, possibly a title or reference number, including the number "32-5290".

Handwritten musical notation on ten staves. The notation is extremely faint and illegible, appearing as light grey lines and scattered characters. Some faint markings resembling notes and stems are visible, but no specific musical information can be discerned.

C

All. Moderato $\text{♩} = 84$

ΠΟΥΝΤ

ο-φω-φω-φω

Μετ' ἡ-γά-θης, ἐπι-χρῆ-σθ-ῆ-ναι, ἑσθ-η-ναι το μελ-ισν

ΠΟΥΝΤ

To Χρῆς τῶ πο-η-θῆ

ἐ-να-το-ῦ-φι-ο-τος κῶ. σπας

ΠΟΥΝΤ

ἂν ἔ-χῃς σου μετ' ἡ-γά-θης, ἐπι-χρῆ-σθ-ῆ-ναι, ἑσθ-η-ναι το μελ-ισν

TRINH (15)

Handwritten musical score for the first system. It features a vocal line and a piano accompaniment. The vocal line includes lyrics: "ĐE HỒ VA-KU-LE-ĐU-TO HÉ-LAV ;". The piano part consists of chords and melodic lines with triplets. There are some handwritten annotations like "3" and "2" above notes.

PHAPA

Handwritten musical score for the second system. It includes a vocal line with lyrics: "Mm TO KE-VY-SAC-EN-YU-SEU K-V-TA". The piano accompaniment features a complex rhythmic pattern with many sixteenth notes and triplets. There are circled numbers "20" and "21" above the vocal line.

PHAP

Handwritten musical score for the third system. It includes a vocal line with lyrics: "ĐE HỒ E-YU HES'AU-TAS AU-WI-VRE HÉ-UM-DE". The piano accompaniment continues with chords and melodic lines.

PHAP

Handwritten musical score for the fourth system. It includes a vocal line and a piano accompaniment. The piano part features a complex rhythmic pattern with many sixteenth notes and triplets.

25

ΦΑΛΟΡΑ

Πλυν. *λύω.* σου αὐ-ρί ο

ΤΟΥΝ
Τοῦ πο-σε καὶ Σά-το ε-σω.

ΤΟΥΝ
το σο θε σου σοῦς αὐ σο

NOUVEAU

35

O - TOUT BIE N'AVAN
 JEU PAR NE QU'UN VINS

Handwritten musical score for 'NOUVEAU'. It features a vocal line with lyrics 'O - TOUT BIE N'AVAN JEU PAR NE QU'UN VINS' and a piano accompaniment. The score includes a treble clef, a key signature of one flat, and a common time signature. The piano part consists of chords and arpeggiated figures.

NOUVEAU

36

Ka ju

Handwritten musical score for 'NOUVEAU'. It features a vocal line with the lyrics 'Ka ju' and a piano accompaniment. The score includes a treble clef, a key signature of one flat, and a common time signature. The piano part consists of chords and arpeggiated figures.

NOUVEAU

37

Ta ta bar pa des noi-n ons

Handwritten musical score for 'NOUVEAU'. It features a vocal line with the lyrics 'Ta ta bar pa des noi-n ons' and a piano accompaniment. The score includes a treble clef, a key signature of one flat, and a common time signature. The piano part consists of chords and arpeggiated figures.

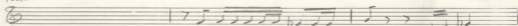
NOUVEAU

38

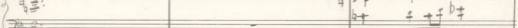
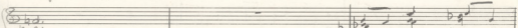
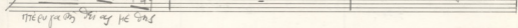
Tison fai- es tou ju pi opas
 Ta e-fa-

Handwritten musical score for 'NOUVEAU'. It features a vocal line with the lyrics 'Tison fai- es tou ju pi opas' and 'Ta e-fa-'. The score includes a treble clef, a key signature of one flat, and a common time signature. The piano part consists of chords and arpeggiated figures.

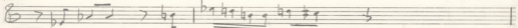
ΡΕΜΙΟ



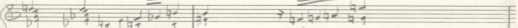
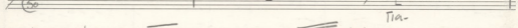
ΠΟΙΗ Τη ἀ-γι-α-τὴν ἁ-γι-ω-ν κ-αὶ τ-ῆ-ς τ-ῆ-ς ἁ-γ-ίας



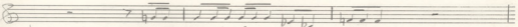
ΡΕΜΙΟ



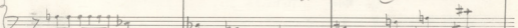
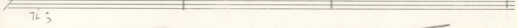
ΠΟΙΗ τὸς κό σ-π-ου τ-ὸν π-ὸ νο-τὸν ὡ-ς θε-ὸς ἡ-σο-ῦ



ΡΕΜΙΟ



ΠΟΙΗ τίς τὸ το-ῦτο ὁ ἀνθρώπος ἐν οὐ-κ-αν-ὸν ἀνθρώπος



55

Πεμ Πρα νη το εις κο ;

οι ηυε γου

Και ται να λοι ται ταις υβι πευ

Musical notation for system 55, measures 1-3. The vocal line (treble clef) contains the lyrics "οι ηυε γου" and "Και ται να λοι ται ταις υβι πευ". The piano accompaniment (grand staff) features chords and melodic lines in the right and left hands.

Πεμ

60

Πουη

Σκι. εγ σκι-υη

σι-υη

Τοι ην σε. αν ηη

Musical notation for system 60, measures 1-3. The vocal line (treble clef) contains the lyrics "Σκι. εγ σκι-υη", "σι-υη", and "Τοι ην σε. αν ηη". The piano accompaniment (grand staff) features chords and melodic lines in the right and left hands.

Πεμ

Πουη

Το σι υη το εου...

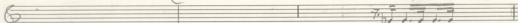
Πουη εβ

Με ποιο. Τι-ηη. ηη

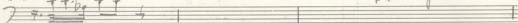
Musical notation for system 60, measures 4-5. The vocal line (treble clef) contains the lyrics "Με ποιο. Τι-ηη. ηη". The piano accompaniment (grand staff) features chords and melodic lines in the right and left hands.

Ρεμ

65

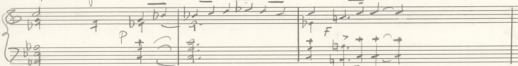


Ποιη

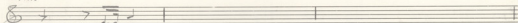


Και η α-γα-πη

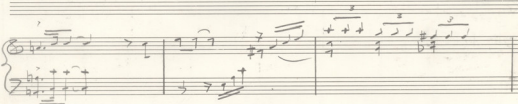
Και η α-γα-πη



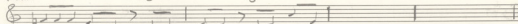
ΡεμΠο



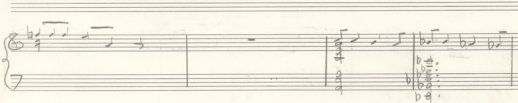
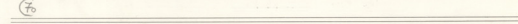
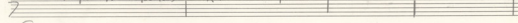
Φυσι και.



ΡεμΠο



Ποιη οι νε-τρο πο-τα-να ε-ξ-ει. α-πο-ψ-ει νε-τρο



ΠΟΙΗΤ

Ε- φαι. Ε- Τολ. τ' ος

Αἰθιαὶ κραιπνῆρα αἰθέ, πῦρ, αὐτῆ εὐφροσύνη πρῶτα σοὶ
Σέπασαι. Τοῖς νεκροῖσι φῶς γέφυραι ὀρμητικῶς Εἰ-Εἰ τ' ἔπειτα
σοὶ ἑσπῆ.)

Προῖος d=56

Handwritten musical notation for the first system. It features a vocal line with a treble clef and a piano accompaniment with a grand staff (treble and bass clefs). The key signature has two flats (B-flat and E-flat), and the time signature is 4/4. The tempo is marked 'd=56'. The piano part includes a 'P' (piano) dynamic marking and a circled '5' in the second measure. The vocal line has lyrics 'Ε- φαι. Ε- Τολ. τ' ος' written below it.

Handwritten musical notation for the second system. It continues the vocal and piano parts from the first system. The piano accompaniment features a steady bass line with chords in the right hand. A circled '10' is present in the vocal line.

Handwritten musical notation for the third system. The vocal line includes a circled '15' and a fermata over a note. The piano accompaniment continues with similar harmonic support.

Handwritten musical notation for the fourth system. The vocal line concludes with a final note. The piano accompaniment provides harmonic closure.

Handwritten musical notation for the fifth system, which is a piano solo section. It features a grand staff with a complex rhythmic pattern in the right hand and a simpler bass line in the left hand. The word 'Finis' is written at the beginning, and a circled '3' is at the end.

ΚΟΡΟ

RENIERE ACTE

Violoncelle
Adagio - 62

to bar 2

POIHT

628

629

630

Handwritten musical notation for the first staff, showing notes and rests.

27 Et. par. E. Tol. P. 5

Handwritten musical notation for the second staff, showing notes and rests.

Handwritten musical notation for the third staff, showing notes and rests.

Empty musical staves at the bottom of the page.

REVERSE ACT

Handwritten notes and markings at the top of the page, including the word "Handwritten" and other illegible scribbles.

Handwritten notes on the left side of the page, including the word "Handwritten" and other illegible scribbles.

The image shows a musical score on a page with five staves. The top two staves are mostly blank with some faint markings. The bottom three staves contain handwritten musical notation, including notes, rests, and bar lines. The handwriting is very faint and difficult to read. There are also some handwritten notes and markings at the top and left sides of the page.

Handwritten musical score for the first system, starting with a circled number 20. It features a treble and bass clef with various notes, rests, and dynamic markings like 'c' and '>'. The bass line includes chords with flats and naturals.

Handwritten musical score for the second system, continuing the piece with similar notation and dynamics.

Handwritten musical score for the third system, including a circled number 25 and the word 'spres' above the treble staff.

Handwritten musical score for the fourth system, continuing the musical composition.

35

P niente

Coro

Tra - tu - si - tu - su - ma - xpe - vi

FF

pp

pp

Coro

FF

ti - so - i - su - m - ma - te - ri - a -e - su - a -e

Mto.

pp *FF*

Coro *Vol.*

F *ff*

ff

Coro *P*

FF

40

per - va - na - pe - te - ro - vo - lu - ta - te

E - va - ge - li - um

ff *ff* *ff*

ff *ff*

ff

Coro

Colo

p *6* *FF*

'E-ki' qoo qoo-te Su ta E-xe-te ö- ta

Sord

p *f*

Sord Sord

Colo

mf

Tpo qi poi Xu

Viol. I

f *pizz*

Viol. I

Colo

f *FF*

Ka-ta. Ki-a. E-pa ri-a. Ka-o. po. ta ta

f

Coro *FF*

Tu. pa. Tu. pa. May no. pai nou va kai vou. pe

Tap 3 *F*

Tap 1-2 *F*

F

FFF

Coro ΝΤΟΥ

οὐς

50

Tap *FF*

Tap *c*

V. I. sul *p*

Coro

To va To va To va

To va To va To va

Alto

F TO VTOIS

F

Canto

55

P Pa re e va tou phi tou

pp

Σφουρίστρες

quinto

ΑΕΙΜΑΤΙΚΟΣ (ΜΑΡΤΟΣ)

Kaθ' ote kai to' ste eis Se ka de ntoi'

ΠΡΟ ΤΗ ΓΟΡΓΗ
♩ = 72

66
ΠΟΙΗΤΗΣ

ΒΡΑΒΕΙΟ
ΠΑΡΑΣΤΑΣΕΩΣ

Οι Κρατούμενοι Κιθάρων ΣΑΝ-ΣΑΝ Α . . . Α . . . Α . . . Α . . . Α-Αδὲς γοι ποῦ

65

ΠΟΙΗΤΗΣ

Ε . . . Ε . . . Ε Εὐχόμενοι τῆς!

Οι Κρατούμενοι Εμφωνικών
Καὶ Πινακωδίων
Σαχάρων

ΠΟΙΗΤ

Μη φοβασθε τὸν ἄνθρωπον
ὁ ἀποθνήσκει τὸ σῶμα αὐτοῦ
ἀλλὰ τὸ πνεῦμα
ὁ ἀποθνήσκει οὐκ ἀποθνήσκει

ΠΟΙΗΤ

Νὺν ἐκείνη ἡμέρα τὸ πνεῦμα αὐτῶν

Allegro

Allegro

Two pi - i fe te Ti - - say ne pi te vea

Allegro

(25)

Allegro

Ze

Allegro

FF

ti yo ce ti - yo ze - karate vto - vs

90

Ποιητ

Coro

Αν - Τσ - ποίος ἔσται ἡ φωνὴ τοῦ ποταμοῦ ὅταν ἔλθῃ τὸ ὕδωρ ἐκ τοῦ οὐρανοῦ καὶ κατακλύσῃ τὴν γῆν;

Ποιητ.

Coro

Ματὶ ἐχέτε καὶ ὕδατος καὶ ἄλατος ἵνα μὴ ἴσθαι ἡμεῖς τὸ ἕλεος τοῦ κυρίου ἡμῶν;

Coro

Ὁ κύριος ἡμῶν

91

Coro

Coro

2

4

Handwritten musical notation for the vocal line of the first system. The melody is written on a single staff with a treble clef and a key signature of one sharp (F#). The lyrics are written below the staff: "την βασιλειαν σου - Σαι εν ταυς ουρανους εν Χω".

Handwritten musical notation for the piano accompaniment of the first system. The piano part is written on a grand staff (treble and bass clefs). It features a steady accompaniment with chords and moving lines in both hands.

Coro

Handwritten musical notation for the vocal line of the second system. The melody continues on a single staff with a treble clef and a key signature of one sharp. The lyrics are: "Κυ τα ουρα τα ουρα Και τη Γη σου".

Handwritten musical notation for the piano accompaniment of the second system. The piano part continues on a grand staff, providing harmonic support for the vocal line.

Allegro marcato $\text{♩} = 100$ ($\text{♩} = 76$)

Handwritten musical notation for the third system, featuring a more complex rhythmic structure. The vocal line is on a single staff with a treble clef and a key signature of two sharps (F# and C#). The piano accompaniment is on a grand staff, with a more active and rhythmic accompaniment.

Coro

- 75 -

(UN)
(ENAS)(TOUS)
(OIOI)

Coro

5

f Ουκ ηγναι νε σε στην το νε σο νε η η τα
ff

Coro

5

νε η η τα σο - - - ου

(UN AURE)

(ΑΙΟΣ)

(TOUS)

(ΟΙΟΙ)

Coro

Ουκ ηγναι ε. σο ναι. ου νε η η τα η η τα η η τα

FEMMES
ΓΥΝΑΙΚΕΣ

HOMMES
ΑΝΔΡΕΣ

Handwritten musical notation for the first system, featuring a vocal line with lyrics and a piano accompaniment. The lyrics are: "ΕΙ-ΣΑΙ ΠΕΡΙΗΓΗ ΚΑΙ ΤΑΓΗ ΓΥ ΓΑΡΕΟ ΤΗ ΣΟΥ ΤΑ ΝΟΥ ΣΙΝΙ ΠΑΝ ΕΙ-ΝΑΙ ΚΕΡ ΠΑ-ΤΗ".

Handwritten musical notation for the second system, featuring a vocal line with lyrics and a piano accompaniment. The lyrics are: "ΕΙ-ΝΑΙ ΚΕΡ ΠΑ-ΤΗ ΚΑΙ ΕΙ-ΝΑΙ ΚΕΡ ΠΑ-ΤΗ ΚΑΙ ΕΙ-ΝΑΙ ΚΕΡ ΠΑ-ΤΗ".

Handwritten musical notation for the third system, featuring a vocal line with lyrics and a piano accompaniment. The lyrics are: "ΕΙ-ΝΑΙ ΚΕΡ ΠΑ-ΤΗ ΚΑΙ ΕΙ-ΝΑΙ ΚΕΡ ΠΑ-ΤΗ ΚΑΙ ΕΙ-ΝΑΙ ΚΕΡ ΠΑ-ΤΗ".

Handwritten musical notation for the fourth system, featuring a vocal line with lyrics and a piano accompaniment. The lyrics are: "ΕΙ-ΝΑΙ ΚΕΡ ΠΑ-ΤΗ ΚΑΙ ΕΙ-ΝΑΙ ΚΕΡ ΠΑ-ΤΗ ΚΑΙ ΕΙ-ΝΑΙ ΚΕΡ ΠΑ-ΤΗ".

Handwritten musical notation for the fifth system, featuring a vocal line with lyrics and a piano accompaniment. The lyrics are: "ΕΙ-ΝΑΙ ΚΕΡ ΠΑ-ΤΗ ΚΑΙ ΕΙ-ΝΑΙ ΚΕΡ ΠΑ-ΤΗ ΚΑΙ ΕΙ-ΝΑΙ ΚΕΡ ΠΑ-ΤΗ".

Handwritten musical notation for the sixth system, featuring a vocal line with lyrics and a piano accompaniment. The lyrics are: "ΕΙ-ΝΑΙ ΚΕΡ ΠΑ-ΤΗ ΚΑΙ ΕΙ-ΝΑΙ ΚΕΡ ΠΑ-ΤΗ ΚΑΙ ΕΙ-ΝΑΙ ΚΕΡ ΠΑ-ΤΗ".

ff

(Ποις τρι ημων)

Adagio $\text{♩} = 72$

Handwritten musical notation for the first system, including a vocal line and piano accompaniment. The lyrics are: *Τῶν αἰ χριστιανικῶν ποιητῶν ἡς (Tutti) Ἐ. νι τῆς;*

Handwritten musical notation for the second system, including a vocal line and piano accompaniment. The lyrics are: *30 Ἐ. νι τῆς;*

Handwritten musical notation for the third system, including a vocal line and piano accompaniment. The lyrics are: *35 Ἐ. νι τῆς;*

Handwritten musical notation for the fourth system, including a vocal line and piano accompaniment.

Handwritten musical notation for the fifth system, including a vocal line and piano accompaniment. The lyrics are: *Ποιητῶν Σὺν ῥῆσιν α. νι τῆς σ. σ. κα τα*

Handwritten musical notation for the sixth system, including a vocal line and piano accompaniment.

Coro

ΔΗΜΟΣ

POINT Πες της για το νους σου το μιν

Α - Κου ω τρε

POIN Xoi me va et en va se Spi si lau Coro va se Spi si lau

Soprano I
Tenor I
Bass II

POINT

55

FFF

Soprano
 VTOU - To VTOU TO VTOU - TO VTOU - TO VTOU TO VTOU TO VTOU
 To VTOU To VTOU TO VTOU TO VTOU

Alto
 To VTOU TO VTOU TO VTOU TO VTOU
 To VTOU TO VTOU TO VTOU TO VTOU

Tenore
 VTOU TO VTOU TO VTOU TO VTOU
 To VTOU TO VTOU TO VTOU TO VTOU

Basso
 To VTOU TO VTOU TO VTOU TO VTOU
 To VTOU TO VTOU TO VTOU TO VTOU

FFF

To VTOU TO VTOU TO VTOU TO VTOU

55

FF

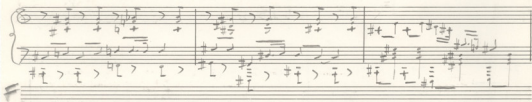
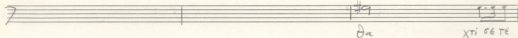
3

Είστε το κεί-λι-νός κα' σπῶ σε λι-πό-σπῶ εἰ-σε πῶ-κα-πο-ρὶ-κί-α-τα-σῶ-σε-φα

60

60

ΠΟΗΤ



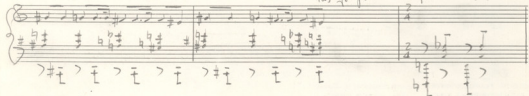
ΠΟΗΤ



ΠΟΗΤ



SOPR TEN



Cello

FFF Εὐχαριστοῦμεν σοὶ Κύριε, οἱ ἄγγελοι τοῦ οὐρανοῦ. Τελευτή

Sopr	Σε - ευχαριστοῦμε	Κύριε Κύριε ψευ-τη	μας τα εὐ-νεσ καὶ τοῖ -
Alt	Σε ευχαριστοῦμε	Κυριε Κυριε ψευ-τη	μας τα ευ-νεσ καὶ τοῖ
Ten	Σε ευχαριστοῦμε	Κυριε Κυριε ψευ-τη	μας τα ευ-νεσ καὶ τοῖ -
B	Σε ευχαριστοῦμε	Κυριε Κυριε ψευ-τη	μας τα ευ-νεσ καὶ τοῖ
B	Σε	εὐ	Χα-

90

Σε - τί γο. εσθ Vrais	Θα. Θυ. κω. κω. σρε. τα τί γο. εσθ	Τα. σο. φαί. ται. σο. φαί -
en	στον	πε
Σε τί γο. εσθ Vrais	Θα. Θυ. κω. κω. σρε. τα τί γο. εσθ	Τα. σο. φα. τα. σο. φαί
Σε - τί γο. εσθ Vrais	Θα. Θυ. κω. κω. σρε. τα τί γο. εσθ	Τα. σο. φα. τα. σο. φαί
Σε τί γο. εσθ Vrais.	Θα. Θυ. κω. κω. σρε. τα τί γο. εσθ	Τα. σο. φα. τα. σο. φαί
en	στον	πε

90

(Bḡaḡiḡaḡe aḡḡi aḡḡi)

(unrs)

κὶ ἰησοῦ χριστοῦ κὶ ἰησοῦ χριστοῦ
κὺρ εὐφρανῶ

κὶ ἰησοῦ χριστοῦ κὶ ἰησοῦ χριστοῦ

κὶ ἰησοῦ χριστοῦ κὶ ἰησοῦ χριστοῦ

κὶ ἰησοῦ χριστοῦ κὶ ἰησοῦ χριστοῦ
κὺρ εὐφρανῶ

95

dim

hct. $\sharp \sharp \sharp$ re fa re. Tai	hct. \rightarrow Tai	-	-	-
hct. $\sharp \sharp \sharp$ re fa re Tai	hct. \rightarrow Tai	-	-	-
hct. $\sharp \sharp \sharp$ re fa re Tai.	hct. \rightarrow Tai.	-	-	-
hct. $\sharp \sharp \sharp$ re fa re Tai	hct. \rightarrow Tai	-	-	-

95

\approx	\approx	\approx	
\approx	\approx	\approx	

dim

(90)

Andantino (♩ = 108)

ΠΙΛΗΟΣ

(5)

Tu pa oi pa kai ro ve me pa na fa -
 Tu pa ro pa va se pa kai ta ft pa -

(10)

Ti ki kai ve kai oi su tu ses kai ve ta
 va ki pa ro o pa ro vou rou oi pa ro

ΦΑΙ 255

ο - να - πο - μου - μου - ves

po - hu - hu - ves

ο - να - πο - μου - μου - ves

ο - να - πο - μου - μου - ves

ο - να - πο - μου - μου - ves

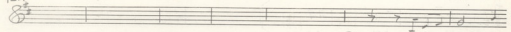
MEI SWAPO ene pa - san

ο - να - πο - μου - μου - ves

ο - σο - ρα - να - - - - - w

ho - vos hu a - ro - hu va

Pcm.

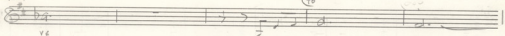


7014

Me - em - pas na - w

65 Ae - po - cu - tu - er -

Pcm

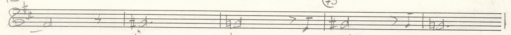


ve

76 Tu - su - cer - X -

77 pla

Pcm



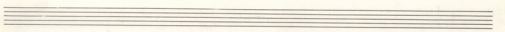
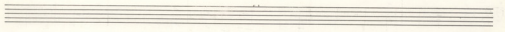
75

hi -

76

77

Tu - pro - su - na



Σελίδα. Page (96) ΜΕΤΡΟ. Measure

CORRECTIONS.

Page
96A

833 835 PREMIERE ACTE (Fin) 840

ΦΑΙΝΕΙ 833
 ΚΟΥΡΟΣ 835
 ΠΑΥΣ 840
 ΟΥΝ 840
 ΟΥΝ 840
 ΟΥΝ 840

835 840

845

FIN DE LA PREMIERE ACTE
 ΤΕΛΟΣ ΤΗΣ ΠΡΩΤΗΣ ΠΡΑΞΗΣ

pp ————— ff

ΔΙΟΝ

30

Καὶ ἡ-τίς-νὴν φεῖ γὰρ ἦν ἡν ἔειπες, ἦν

ΔΙΟΝ

35

ὄντι-φίτ' ἔκ-κα-ν καὶ πρὸς τὴν ἄρ-νη-σιν

ΔΙΟΝ

40

ἦν-τὸ

ΔΙΟΝ

ἦν ἡν ἔειπες κα

410M

SE-TE-TUIS-XI-E-TC AU-TE-S-TOR H-TERO-PA-TRI-PER DI-TI-TOR VEG

45

420M

50

55

410N

AN-NUN-CE-TU-PA-RE BO-NI-S-PE-RI-AM VO-S

410N

AN-TE-QUA-M IN-CE-PTA

60

65 - 101 -

Διον

σκαρ. πινα σφι να

70

Διον

ο - να - ρη γυ - ρω τον

75

Διον

γη κα. κτ. να

DEUXIEME ACTE

102 SCENE

Viz Page (102)

MONVIZO

— 5 —

Tu pu tu ka-toi- kaw law or psi mau to- se

92

on B for se

93

ΔΡΩΝ

Καὶ βασιλεὺς ποιεῖ τὸ εὖ
 ἵππῳ ἐν εὐνοίᾳ βασιλεύει

(95)

ἦτο καὶ ἐκεῖ

Ἐπεὶ ἐπέκεινα τῆσιν ἡμῶν ἀπέστησαν αἱ ἰσχυροὶ
 ἢ ἐπὶ τῆσιν αἰσῶν ἐκίχοντο, τῶν αὐτῶν ἀπέστησαν
 Μακρῶν τραπεζῶν αἱ ἐπὶ τῶν ῥυθμῶν, ἀπέστησαν (ἡ
 ἐπὶ τῶν καὶ ἐπὶ τῶν αἰσῶν) ἀπέστησαν
 Βασιλεὺς καὶ βασιλεὺς καὶ
 ἡγεμῶν αἰσῶν τῶν αἰσῶν αἰσῶν αἰσῶν ὁ ὄρων
 καὶ ἡ ἀναστασία. Τῶν αἰσῶν αἰσῶν καὶ αἰσῶν αἰσῶν
 ἀπέστησαν ἀπέστησαν.

Maes $\text{♩} = 104$

T. And. $\text{♩} = 104$

SOLDATS
ΣΤΡΑΤΙΩΤΕΣ

Coro

Τὸ Μὲν Χρὸ
 Χρὸ τῶν αἰσῶν αἰσῶν τῶν αἰσῶν
 τῶν αἰσῶν αἰσῶν αἰσῶν αἰσῶν
 τῶν αἰσῶν αἰσῶν αἰσῶν αἰσῶν

Καὶ τῶν αἰσῶν
 αἰσῶν αἰσῶν
 τῶν αἰσῶν αἰσῶν

(10)

ΣΡΑΤ
Corno

25

ΣΡΑΤ
Corno

30

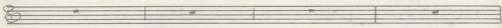
2. Τὴν ἀγ-ι-ο-
3. κὴν ἁγ-ια-

Αἴψα νῖο ἀίψα
ΣΡΑΤ $\text{♩} = 92$

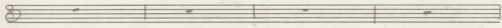
Μαρι- οῦς ἁ- γ-ι- οῦς ἁ- γ-ι- οῦς ἁ- γ-ι- οῦς ἁ- γ-ι- οῦς

Corno
marc.

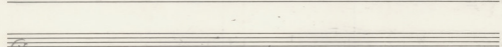
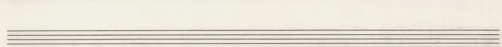
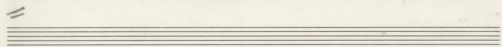
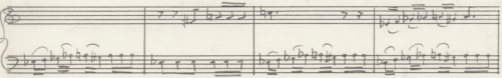
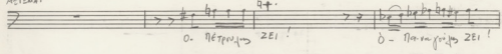
ΑΝΑΝΙΑ



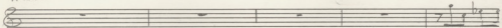
ΟΡΓΑΝ



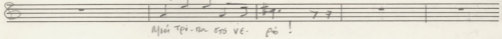
ΑΞΙΜΑΤ



ΑΝΑΝΙΑ

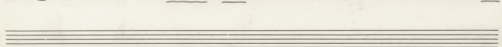
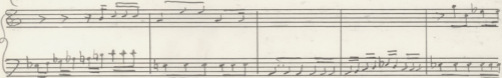


ΟΡΓΑΝ



ΑΞΙΜΑ

Τι - ΚΑΙΟΥΤΕ;



ANNA

Handwritten musical notation for the first system, featuring a vocal line and a piano accompaniment. The lyrics are: "Kari tui kau roa he u. Hele yo E. vai. hi. mo. So."

A-pa-ti-a! ti-tis;

Handwritten musical notation for the second system, including a circled measure number '20' and a piano accompaniment.

ANNA

Handwritten musical notation for the third system, including a circled measure number '25' and lyrics: "Ki-pae he. va au-ta yo o-ne en pa vs-ko. hi. yo"

Handwritten musical notation for the piano accompaniment of the third system.

ANNA

Handwritten musical notation for the fourth system, including a circled measure number '30' and lyrics: "Ia he - en kau ihi au-i. Ai. o-vu ois"

Handwritten musical notation for the piano accompaniment of the fourth system.

ΑΥΛΙΑ

Handwritten musical score for the first system. It consists of a vocal line and a piano accompaniment. The vocal line is in treble clef with a key signature of one sharp (F#) and a 2/4 time signature. The lyrics are: "Ποι σὸν φῶς ἴα μή Τὸν καὶ βῆγ ἴ ποτε". The piano accompaniment is in bass clef with a key signature of one sharp and a 2/4 time signature.

ΑΥΛΙΑ

Handwritten musical score for the second system. It consists of a vocal line and a piano accompaniment. The vocal line is in treble clef with a key signature of one sharp and a 2/4 time signature. The lyrics are: "ὦ. Κ' ἔχῃ τὸ σὸν μου τοῦ". The piano accompaniment is in bass clef with a key signature of one sharp and a 2/4 time signature.

ΑΥΛΙΑ.

Handwritten musical score for the third system. It consists of a vocal line and a piano accompaniment. The vocal line is in treble clef with a key signature of one sharp and a 2/4 time signature. The lyrics are: "Κ.ὸ σὸν! Ἐὖ σὲν Ἐὖ σὲν Ἐὖ σὲν ἦ σὺ σὲν!". There is a circled number "40" below the vocal line. The piano accompaniment is in bass clef with a key signature of one sharp and a 2/4 time signature.

PAYSANES
 ХОРЕНА ХУРКАН $\lambda = 4=4$

-110-

ANTHO
 TUNIKES à unisson

Arçijçar avri paupri kai ajustoite

Coro

Mapoiti vs ju- pto Tpa-ju

Detailed description: This block contains the first musical system. It includes a vocal line with lyrics in Greek and Cyrillic, and a piano accompaniment. The score is marked with a '2' above the vocal line and a circled '45' below it. The piano part features a rhythmic accompaniment with various chords and melodic lines.

X.X.

Coro

Au ter jai na Sias kai ne pa

Xa-

Detailed description: This block contains the second musical system. It includes a vocal line with lyrics in Greek and Cyrillic, and a piano accompaniment. The score is marked with a circled '50' below the vocal line. The piano part continues with a similar rhythmic accompaniment.

X.X.

Coro

poi te voy avc dny ju s

την κρηνην. ο. το ηι εν

Detailed description: This block contains the third musical system. It includes a vocal line with lyrics in Greek and Cyrillic, and a piano accompaniment. The score is marked with a circled '50' below the vocal line. The piano part continues with a similar rhythmic accompaniment.

Coro

ΑΜΑΡΙΑ

ΚΥΡΙΕΣ ΤΗΣ ΑΝΗΣ

Ευ- κω- ρί- α να δι- α- φω- τι-

ΟΡΘΗ

Ερχε- ται ὁ λα- ὸς σου!

ΑΜΑΡΙΑ

Rall

ΚΥΡΙΕΣ

(μικραίνει σὺν Ἀραρίᾳ)

(σκαρτ σὺν Ἰσραὴλ)

νοι δι- α- φω- τι- (60) στα και νοι 90 φω- ει ορει!

Ἄρφα

Αἶνον

Με γα- λ- ο- ται- τε νε- τω- σι- στω- τω- ς ἡ- ἡ- ς ἡ- ἡ- ς

ΧΟΡΙΑΤΕΣ

Coro
 pou te vis pouf sou. Jeu e. tu papou tu i. ta ta pa

75

ΧΟΡΙΑΤΕΣ

Coro
 Kou pou Xou Ti - ju. Vou. Kou.

ΟΡΘΗΝ
 Μεγυ λησαν τι οβουα και οα
 Αρχει. Ομωρ να κηρτεω
 ωσθη τω, Κορυωλων και γουατλων

ΧΟΡΙΑΤ. COPO
 Τα Χηριατω και βα οι. Jeo d = 80-84

AΣΙΩΝ

0-υ-υ-υ ; Ει-σα βου- τος ! Ει-βος

ΕΝΑΣ ΧΡΙΑΤΟΣ

ΕΙ-ΡΗ-ΝΗ

90

Detailed description: This system contains the first two staves of music. The top staff is a vocal line in G major with a treble clef and a common time signature. It begins with a series of eighth notes and rests, followed by a quarter note G. The lyrics '0-υ-υ-υ ; Ει-σα βου- τος ! Ει-βος' are written below. The second staff is a vocal line in G major with a treble clef and a common time signature. It begins with a quarter note G, followed by a quarter rest, then a quarter note G. The lyrics 'ΕΝΑΣ ΧΡΙΑΤΟΣ' are written above, and 'ΕΙ-ΡΗ-ΝΗ' is written below. A circled '90' is written below the staff. The piano accompaniment consists of two staves (treble and bass clefs) with a common time signature. The right hand plays a series of chords and eighth notes, while the left hand plays a bass line with chords. There are dynamic markings like '>' and 'f' throughout.

AΣΙΩΝ

ΥΑΙ ΤΗ ΠΙΣΤΕΙ ΤΩ ΠΑΡΕΛΘΟΝΤΙ!

ΧΡΙΑΤΟΣ

Αγίατα

91

Detailed description: This system contains the next two staves of music. The top staff is a vocal line in G major with a treble clef and a common time signature. It begins with a series of eighth notes and rests, followed by a quarter note G. The lyrics 'ΥΑΙ ΤΗ ΠΙΣΤΕΙ ΤΩ ΠΑΡΕΛΘΟΝΤΙ!' are written below. The second staff is a vocal line in G major with a treble clef and a common time signature. It begins with a quarter note G, followed by a quarter rest, then a quarter note G. The lyrics 'ΧΡΙΑΤΟΣ' are written above, and 'Αγίατα' is written below. A circled '91' is written below the staff. The piano accompaniment consists of two staves (treble and bass clefs) with a common time signature. The right hand plays a series of chords and eighth notes, while the left hand plays a bass line with chords. There are dynamic markings like '>' and 'f' throughout.

AΣΙΩΝ

0-ΥΟΥΣ ΟΥ ΠΑΡΕΛΘΟΝΤΙ

ΧΡΙΑΤΟΣ

92

Detailed description: This system contains the final two staves of music. The top staff is a vocal line in G major with a treble clef and a common time signature. It begins with a series of eighth notes and rests, followed by a quarter note G. The lyrics '0-ΥΟΥΣ ΟΥ ΠΑΡΕΛΘΟΝΤΙ' are written below. The second staff is a vocal line in G major with a treble clef and a common time signature. It begins with a quarter note G, followed by a quarter rest, then a quarter note G. The lyrics 'ΧΡΙΑΤΟΣ' are written above, and '92' is written below. The piano accompaniment consists of two staves (treble and bass clefs) with a common time signature. The right hand plays a series of chords and eighth notes, while the left hand plays a bass line with chords. There are dynamic markings like '>' and 'f' throughout.

TUN. FEM.

ANTP. - HOM. *Τει - σω*
 Ε - χω σοι νου - κληρο - τη - κοι ητοι ηραρετ νου οσ. Την ηει - von

TUN - FEM

HOM. *κορ μου νι σεις και ο - νος Χι -*
 ANTP. *καις τρις και βου κρη πυ. σοι και ει - που α - τει - θυμη - ρι φα*

TUN - FEM

HOM. *μου - τει ηραρ τα - σου χρι -*
 ANTP. *σοι - και ει - που οσ ο - νος - μη πι ος τω ψη - φα - μη - τη*

FEM. HOM.
TUN. ANTP.

150

Τρί-Σαγ κολ φού-ζα κιν ερ-ναι! Μο-νο οι θε-οι πρέ-σβη-ρα ναί και γέ-ρω.

150

TUN. ANTP

155

το - κί-ε γέ-ρω: *δρ. Στι Σίττον φρι αρχίτων ναί βραίων*
 ερ-βρ-σι-μνι μου τον και το στο θρ-νο και στα

155

160

κορο, , → Οι Χερουσίμους έχουν βρει.
 φα σα ερ-δύ-να-το. Γου-μαν-σι στις ως να-μω-πρεσ οτιν και σα

160

Азіям. д. = 84

(165)

Агітацо

W Bar or

stacc

ОБІВН

Азіям

Азі-ям. Си-а-ти-а-ди. о-у-сов ти- ва при-го ;

ОБІВН

(170)

Вис-те ва-ти бси-те Ка-ва-ти пи-те о-те

Obari

(175)

Handwritten musical score for the first system, measures 175-178. It consists of a vocal line and a piano accompaniment. The lyrics are: "i. bau. a. ei. a. 3. Et. tai. 80 h. kop. 81.00".

(180)

Handwritten musical score for the second system, measures 180-183. It consists of a vocal line and a piano accompaniment. The lyrics are: "tu ny. x. ei. Th. vru. pt. en. tou. ka. tu. ju".

(ΕΡΧΕΤΑΙ Ο ΘΕΩΣ - ΑΝΑΓΑ ΚΑΙ Η ΑΝΟΧΙΑ ΤΩΝ ΜΕΝΩΝ ΟΙ ΣΥΝΑΙΟΥΣ ΚΑΙ Ο ΣΥΝΑΙΟΥΣ)

Handwritten musical score for the third system, measures 184-187. It consists of a vocal line and a piano accompaniment.

(185)

Handwritten musical score for the fourth system, measures 188-191. It consists of a vocal line and a piano accompaniment.

Handwritten musical notation for the first system, featuring a treble and bass clef with various notes and accidentals.

ΑΞΙΩΜ. Plu mosso (190)

Empty musical staff for the second system.

ΣΠΙΤ (ΨΑΧΝΟΥ)

♩ = 132
 marcato

♩ = 132
 marcato

Handwritten musical notation for the third system, including notes, rests, and dynamic markings.

ΑΞΙΩΜ (της της σπαρτικής φοιτητικής για να γίνει και η πρώτη)

Βασιλει- και Σι-α-τα- για και-τα και για Σε η' να

DE η' να; Α. η'

(195)

Handwritten musical notation for the fourth system, including notes, rests, and dynamic markings.

ΑΞΙΩΜ

ΣΕΡΑΤ 1u-ke-vo. Se ke-vo ep-sti o. n. pa-ni-w-ke vo Se ju to Δt a-w. so tov fa-ko.

va;

(200)

ΑΞΙΩΜ

cro!

(205)

Ma Kapsi va mo. coi ou!

va Ba. ju Tw ke pa. ja-ros se-na-ju ke

AE110 *bu. bu. bu*
hu. te po
 Sopran *Kai Voi-To-emi ou emi pa-hi-a*

210

Soprano (215) *So. pa-ti-a emi pa-hi-a So. pa-ti-a emi pa-hi-a*

Poco Meno *d. = 120-126*

220

- 127. -

(225)

Στρατή

Να-τίς! Να-τίς!

Διον

(235)

α, Αρτεμις ὁ ποι-τός

Κε-πέ νος οὐ ποι-τός!

Handwritten musical notation for the first system, featuring a treble and bass clef with various notes and accidentals.

410H

Agoni $\text{♩} = 69-72$

240

Vi - pu. o - Δι - o - vu.

Handwritten musical notation for the second system, including a treble clef and a bass clef with notes and a key signature change.

410H

3

οὐς!

Κιηδου να ηρω ου. vi ου

Τη

Handwritten musical notation for the third system, featuring a treble clef and a bass clef with notes and a key signature change.

410H

Αξιου.

245

πi

Τη - ηα - ηρ - ηη

Ε. φα. Χη. Τη - τε Ε - Χη - τε. Τη Χη. Ρου

Handwritten musical notation for the fourth system, including a treble clef and a bass clef with notes and a key signature change.

Allegro (Tempo de Moxes)

ΑΕΙΩΜ. *mf*

vo - ó 'ó ðw naç ay ðe - ða - u - noçp

$\text{♩} = 80$

Coro DE ANDANTES

ΜΑΧΙΝΑΙ ΕΡΧΟΝΤΟ ΕΚ ΑΣΤΡΟΥΣ ΤΩ ΕΛΛΑΣ ΚΑΙ Ο ΚΑΘΕΡΩΝΑΣ ΤΩΝ. ΟΙ ΣΥΝΑΓΟΝΤΕΣ

σηκουον τω χιρμ τω ψηδ

mf

3

250

f

3

UN PARTISAN - LE CHEF ΚΑΡΕΤΑΝΟΣ (Αφ' ου τω Διδωου) *mf*

Σι - νροφι φται αν - τε στω ω - ρα

ó - τωρ τρι - χου να - ρι αν - Α -

mf

3

KARJET.

Handwritten musical score for Karjet. The top staff is a vocal line with lyrics: "sh re", "na. na. va. ter. jou. ta", "ô. Jou. E. Kar. ti". The bottom staff is a piano accompaniment. The key signature has one flat (B-flat) and the time signature is 3/4. The music consists of three measures.

Handwritten musical score for Karjet. The top staff is a vocal line with lyrics: "ka. Xa. qpa. kif. at. tau. en. pau. ri", "mi". The bottom staff is a piano accompaniment. The key signature has one flat (B-flat) and the time signature is 3/4. The music consists of three measures. A tempo marking "Allegri" and "(Bourras éjou - Mère i shévros)" is written above the second measure. A dynamic marking "F" is present in the second measure. A tempo marking "♩ = 50" is written above the second measure.

BRANCO

Handwritten musical score for Branco. The top staff is a vocal line with a long note and a fermata. The bottom staff is a piano accompaniment. The key signature has one flat (B-flat) and the time signature is 3/4. The music consists of three measures.

(265)

Handwritten musical score for Branco. The top staff is a vocal line with lyrics: "ka. Xa. qpa. kif. at. tau. en. pau. ri", "mi". The bottom staff is a piano accompaniment. The key signature has one flat (B-flat) and the time signature is 3/4. The music consists of three measures.

Διον

(280)

Handwritten musical score for the first system. It consists of a vocal line and a piano accompaniment. The vocal line is written on a single staff with a treble clef and a common time signature. The lyrics are: "ὦ Μοῦσ' αἰ. Τὸν τοῦ. τοῦ τῶν τῶν - - γι. Κῆ". The piano accompaniment is written on two staves (treble and bass clefs) with a common time signature. The music features various chords and melodic lines.

Διον

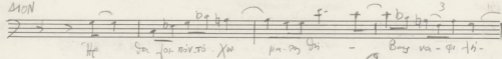
Handwritten musical score for the second system. It consists of a vocal line and a piano accompaniment. The vocal line is written on a single staff with a treble clef and a common time signature. The lyrics are: "ἀντὶ χυ. τοῦ αἰ. μα. θε. οὐ. δικαίου σου". The piano accompaniment is written on two staves (treble and bass clefs) with a common time signature. The music features various chords and melodic lines, including a triplet in the vocal line.

Διον

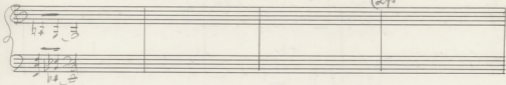
(285)

Handwritten musical score for the third system. It consists of a vocal line and a piano accompaniment. The vocal line is written on a single staff with a treble clef and a common time signature. The lyrics are: "ἔσαν. τα. οἱ βα. α. ποι -". The piano accompaniment is written on two staves (treble and bass clefs) with a common time signature. The music features various chords and melodic lines.

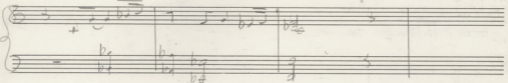
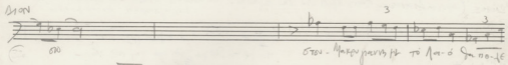
MON



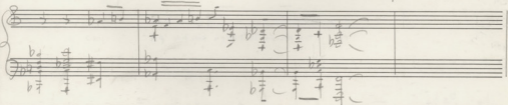
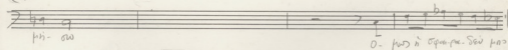
(2)^o



MON



(2)^o



Ρεμ

Στοιχ. Κρ. no. pag. a.p.

ὁ Πῶς ἂν σφαιρῶν Σὺν ἡαορῶν υἱὸς τοῦ - οὐ

Ρεμ

Ρω. οὐ αὐ. ὁ Μαε- τῶς

Στοιχ. Μακρῶν γυναικῶν τοῦ Λαοῦ ὁ Σαν. no. 16.

Ρεμ

(320)

Κι' αὖ ἐν αὐτῶν ὁ Μαε- ὁ Μαεργῶν αὐτῶν κατ' ἑαυτῶν

335

Pizz

3

non nou e ja ta na avon en B te noyay o vo

va - pe - pi a To - te kje - qto - no ja poe

340

Pizz

(H Puzoniam (Gapani) (Gau))

Dist

sey tra you in kas - Bio. joi

(Xarica kai i diavros)

KAMPIAMENTO - Affai di omikov - Gvante ii ΦΑΙΛΑ too apokavio.

ΦΑΙΛΑ Affai

$\text{♩} = 69$

P Δφο - cov - ta

Pedal sionle

ΦΑΝΑΡΑ

5 TO - i-fo-po. TO - nps-sw-no no

10 K'E yu'n hant TO - ka TO qe-po aepo-tai te - -

15 OMO K'E-est ee TO su. - nva mu'ns vasi-

ΦΑΙΩΡ.

20 *mf* *mf* *mf* *mf*

Handwritten musical score for 'ΦΑΙΩΡ.' in 3/2 time. It consists of a vocal line and a piano accompaniment. The vocal line starts with a treble clef and a key signature of two flats (B-flat and E-flat). The piano accompaniment is written for grand piano with a bass clef and the same key signature. The score includes dynamic markings such as 'mf' and 'f', and various musical notations like slurs, accents, and fermatas. The lyrics '20 *mf* *mf* *mf* *mf*' are written below the vocal line.

ΦΑΙΩ.

25 *mf* *mf* *mf* *mf*

Handwritten musical score for 'ΦΑΙΩ.' in 3/2 time. It consists of a vocal line and a piano accompaniment. The vocal line starts with a treble clef and a key signature of two flats. The piano accompaniment is written for grand piano with a bass clef and the same key signature. The score includes dynamic markings such as 'mf' and 'f', and various musical notations like slurs, accents, and fermatas. The lyrics '25 *mf* *mf* *mf* *mf*' are written below the vocal line.

ΦΑΙΩ

30 *mf* *mf* *mf* *mf*

Handwritten musical score for 'ΦΑΙΩ' in 3/2 time. It consists of a vocal line and a piano accompaniment. The vocal line starts with a treble clef and a key signature of two flats. The piano accompaniment is written for grand piano with a bass clef and the same key signature. The score includes dynamic markings such as 'mf' and 'f', and various musical notations like slurs, accents, and fermatas. The lyrics '30 *mf* *mf* *mf* *mf*' are written below the vocal line.

Handwritten musical notation on a single staff. The lyrics are: "pa-va-tu. pa" followed by a fermata over "pa". The word "oriv" is written at the end of the staff.

35

Handwritten musical notation for a piano accompaniment, consisting of two staves. The music includes various chords and melodic lines with some dynamics markings like *f*.

Handwritten musical notation on a single staff. The lyrics are: "Ap. 8ps. ki-ko - va a-va-ri - oti tov noi-n-ti".

40

Handwritten musical notation for a piano accompaniment, consisting of two staves. The music includes various chords and melodic lines with some dynamics markings like *f*.

45

Handwritten musical notation on a single staff. The lyrics are: "To-ve po di o. w. ni oti oi-d-".

Handwritten musical notation for a piano accompaniment, consisting of two staves. The music includes various chords and melodic lines with some dynamics markings like *f*.

τρεῖ-ς ἡμέρας τὸ νύκτ' ἦλθ' ἔπος παρὰ Σι-φωῖν ἡ - φασασι - γι - γὰρ

(50)

(οὐκ-εὐκὴ φωνή γίνεται τὸ νύκτ' ὡς ΠΡΩΤΗΣ ΠΡΑΞΗΣ)

τρεῖ-ς ἡμέ- ρα - - - - - κὶ ἡ Τροῦς Σι - φωῖν - σα

(55)

dem

ΠΡΑΞΗ 2
ΣΚΗΝΗ 2

(Τυγχόνει από Μάρκο τον Πρωτό ΠΡΑΞΗΣ - Τον ηρώων - τον Ίσον του
ο οποίος και είναι λειτουργός - ή Σκηνή 1 και Ίσον, ο οποίος
Μαρκου - ο Διδασκάλος όπως και πριν ηδύτης και αγαποδύτης.
Οι αλλη, τον ηρωονόμην ην' ανώπιον αίσθησιν. Οραση -
π. 61 - Σκηνή 2)

♩ = 100

9/16
Soprano marcato

Δύο

7
5

Μαρκου και Ισονόμην Διδασκάλου φ. 10.

10

Δύο

7
170 φ. 10 - φ. 11 - 15

Και και Τον και Ισονόμην Της Μαρκου ην' Της Σε ην' 15

50

6. es. m. y f pa noy. St. k'pav. eris

55

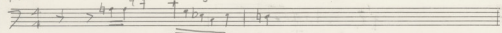
Prv. ka Au. ty nou i. i. sta. pi n San. a. va tri ece

60

oi E. pa eris tis -

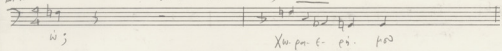
-147-

Ποιη.



Δρον

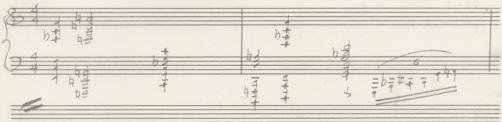
ὁ Ἐλ-λεὺς Χου-φου-τῶ-φου-φου ὦ ; 5



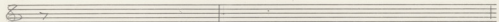
ὦ ;

Χου-φου-ε-εῖ-φου

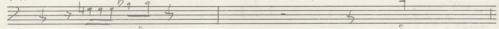
In Stesso tempo



Φαίβ.



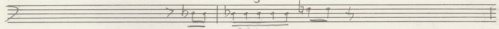
Ποιη



Χου-φου-φου-φου-φου ;

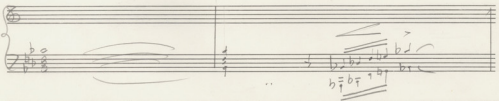
ὦ

Δρον



Χου-φου-φου-φου-φου-φου Ἐ-φου-εῖ-φου

70



ΦΑΙ.

ποι. Δι-ο-vo. σε κ'ι'νω-σας Βα-βυ ;

Μοι μ'αγαπ'α πι

Pia Lento

ποιη Kai ποιν η' εχου ποιν-τι ;

♩ = 44

(FS)

ο Πι-η-της ε-νω-σε

Ποιη

Μαυ. 3 πο. νου με. να α. πο φε φι λη τω. Χρσ

Διων

κρσ ! Μαυρ νου με. να φι λη τω

Ποι.

Ε λη. τε σο δι κο ρου περι. βσ. η ε νου παρ ην θη ρω

Διων

Μαυρ νου με. να

Ποι

φι - λη

Διων

151

Μεγάλο Πιλοτάρισμα

(90)

ΠΟΙΗΤ.

Handwritten musical score for the first system. It includes a vocal line with lyrics "Αρβανίτες", a piano accompaniment, and a drum part. The tempo is marked as $\text{♩} = 69-72$. The key signature has one sharp (F#).

(#ΦΑΙΔΑ ΠΙ ΕΥΡΥΜΑΤΕΣ)

(95)

ΠΟΙΗΤ.

Handwritten musical score for the second system. It includes a vocal line with lyrics "Δε-φω-ρεσνιασμα για σο", a piano accompaniment, and a drum part. The tempo is marked as $\text{♩} = 95$. The key signature has one sharp (F#).

Handwritten musical score for the piano accompaniment of the second system. It features complex chordal textures and rhythmic patterns.

ΡΑΠΣΟΔ.

Handwritten musical score for the third system. It includes a vocal line with lyrics "Με-προ-γρηγορα αυ-τι-μα-τα-κα-τα-ε-ρε-πο-για-ο-ση-μα-τα", a piano accompaniment, and a drum part. The tempo is marked as $\text{♩} = 95$. The key signature has one sharp (F#).

Handwritten musical score for the piano accompaniment of the third system. It continues the complex harmonic and rhythmic development.

Αίψο νιό άγγί

ΡΕΛΗΝΖ

Καταύτα τα ΤΕΣ

ΠΟΗ

♩ = 60

ΔΙΟΝ

Αίψο νιό άγγί

100 ΗΕ.νΑ. Ο.νΕ.ΡΑ Με γου.τι ΚΕΥ.ν. ΙΟ. ΓΟΥΣ. ΝΟΟ. ΣΤ.ΚΑΙ. ΤΙΦΟΥ

ΠΟΗ

(105)

ΚΑ. ΤΑ.Ι.Α. ΒΑ. ΚΑ. ΤΑ.Ι.Α. ΒΑ ΤΟ ΕΘΝΟΒΟΥ.ΙΟΥ.Ι.Α. ΝΟΕΡΑ ΦΙΙ. ΝΩΣ

ΚΕ.ΨΥ. ΤΙ.ΝΑ ΚΑ.ΝΩ ΝΑ.ΝΥ. ΨΥ

P.M.

Soprano: σοφὸν σοφίαν καὶ ἐπιστήμη
 Tenor: σοφίαν καὶ ἐπιστήμη
 Bass: σοφίαν καὶ ἐπιστήμη

σοφίαν καὶ ἐπιστήμη σοφίαν καὶ ἐπιστήμη
 σοφίαν καὶ ἐπιστήμη σοφίαν καὶ ἐπιστήμη
 σοφίαν καὶ ἐπιστήμη σοφίαν καὶ ἐπιστήμη

(130)

P.M.

Soprano: τὴν
 Tenor: τὴν
 Bass: τὴν

ἡνέκεν-α ἡνέκεν-α τὴν ἡνέκεν-α τὴν ἡνέκεν-α
 τὴν ἡνέκεν-α τὴν ἡνέκεν-α τὴν ἡνέκεν-α τὴν ἡνέκεν-α

ΦΗΛΩ
 To φως εν Χρισ- ω εν

ΡΕΝ

ΔΑΜΩ
 Τη- πο- σα- ρη- η- φα
 To φως η- πο- σα- ρη- εν Χρισ- ω εν

ΠΑΡΩ
 To φως η- πο- σα- ρη- εν Χρισ- ω εν

ΤΡΑΧΤ
 To - - φως η- πο- σα- ρη- εν Χρισ- ω εν

ΑΡΩ
 To φως εν Χρισ- ω εν

Coro. Tutti (Unsono)
 Ε- τα απο Χρισ- η- ταρ- η- κη- εν- σο- ρη-

Handwritten musical notation for piano accompaniment, showing chords and rhythmic patterns.

ΕΤΑΙΡΟΧΡΩΜΑΤΩΝ ΚΑΙ ΕΣΤΙ - ΡΑ

F- Vay - Kan Pōs Pōnē - Kōmōsōn ē Sō Sō + ♯ ♭ γι - νο - τω

ΕΤΑΙΡΟΧΡΩΜΑΤΩΝ ΠΡΟΒΑΛΕΙ - ΡΑ

ΕΤΑΙΡΟΧΡΩΜΑΤΩΝ ΠΡΟΒΑΛΕΙ - ΡΑ

ΕΤΑΙΡΟΧΡΩΜΑΤΩΝ ΠΡΟΒΑΛΕΙ - ΡΑ

ΕΤΑΙΡΟΧΡΩΜΑΤΩΝ ΠΡΟΒΑΛΕΙ - ΡΑ

135

Coro

P.M. (140)
 Soprano *á spqo* *ov ve pnao ne - pa*
 Alto *(unif)* *ne* *Ser. vuv oi noi n - ter*
 Tenor *0* *á - vai is - ú - pa qoa ne* *pa - nne. Ser -* *vuvai noi n - ter* *vov tae*
 Bass *0* *á - vai is - ú - pa ov ne Ser - vuv ne Ser -* *vuv oi noi n - ter*

P.M. ME *pa' ju ve* *i - úo ov. pa' roas* *pa' ju ve*
 Soprano *(Coco)* *je* *vov tau* *er* *erpa*
 Alto *0* *á - - - erpa - - ve qo á - va - ne* *pa*
 Tenor *0*
 Bass *je* *vov tau. á -* *erpa ..*

Coco

Φωνή

Το φως του Χριστού

Περιο

ηλεκτρικά σου φω

ποι-φαί-τε - α

Δημο

Το φως του σου Χριστού

Καθόρα

Το φως του σου Χριστού

Ποιητ

Το φως του σου Χριστού

Δον

Το φως του σου Χριστού

Το φως του σου Χριστού

Coro. Tutti (145)

Coro

Ε-ως του Χριστού σου φω

ΦΑΛΛ

ΕΙΣ ΤΟΝ ΧΡΙΣΤΟΝ ΗΜΕΙΣ ΠΙΣΤΕΥΟΜΕΝ ΕΙΣΕ - ΡΑ

ΡΕΜ

Ο - ΤΑΥΤΟ ΣΕ ΙΣ ΠΡΟ ΟΥ ΣΙ ΠΑΤΗΡΑ.

ΟΜΗ

ΕΙΣ ΤΟΝ ΧΡΙΣΤΟΝ ΗΜΕΙΣ ΠΙΣΤΕΥΟΜΕΝ ΕΙΣΕ - ΡΑ

ΚΑΡ

ΕΙΣ ΤΟΝ ΧΡΙΣΤΟΝ ΗΜΕΙΣ ΠΙΣΤΕΥΟΜΕΝ ΕΙΣΕ - ΡΑ

ΠΟΙΗ

ΕΙΣ ΤΟΝ ΧΡΙΣΤΟΝ ΗΜΕΙΣ ΠΙΣΤΕΥΟΜΕΝ ΕΙΣΕ - ΡΑ

ΔΙΑΝ

ΕΙΣ ΤΟΝ ΧΡΙΣΤΟΝ ΗΜΕΙΣ ΠΙΣΤΕΥΟΜΕΝ ΕΙΣΕ - ΡΑ

ΚΟΡΟ

ΕΙΣ ΤΟΝ ΧΡΙΣΤΟΝ ΗΜΕΙΣ ΠΙΣΤΕΥΟΜΕΝ ΕΙΣΕ - ΡΑ

(150)

Κορο

Handwritten musical score with lyrics: *ψαλ μω χησ -*

(H. Pappadimitriou, φωνητα Δημοτικού)

ψαλ μω στα εη μω χησ va

ψαλ μω στα εη μω χησ va

ψαλ μω στα εη μω χησ - - va

ψαλ μω - χησ - (va)

(160) *Coro*

Ε-τσι απο χησ εη των ημ υμει η Εσπε - pa

Handwritten musical score for the chorus section, including a piano accompaniment line.

Ακούεται το τραγούδι των στρατιωτών από παντού. Έως ο ύψος (υψος)

προς τα πάνω, φανερότατα

Μοαίαν οι φαντασι με στις τις αρχές 1946-49.

Αρκετά καραγκιόζι και άλλα χιμαιρικά ποι κρατούν

αυτοί στον πιο όριον με τα πλάνα - κέρτα και άλλα

και οι Φρενιόζι - κι άλλα χιμαιρικά ποι.

Αρκετά οι αίσια και κέρτα και άλλα

Οι προταγμένα καταρτιώνονται ανήλικα από τα άλλα

ΔΡΟΜΟΣ

10

οὐκ ἔστιν ἄλλος θεὸς παρὰ τὸν πατέρα καὶ υἱόν

ΝΑΤΑΣ

Ἰακουβὲ ἐξ ἧς γέννησται

ΦΡΕΙΔΕΡΙΚΗ

15

Ὁς ἐξ ἑαυτοῦ γεννητὸς ἦν καὶ ἰσὺς τοῦ πατρὸς

ΘΕ Ἰωάννης ὁ Βαπτιστῆς

ΦΡΕΙΔ

ὁ ἀληθὴς θεὸς ἐκ γεννητοῦ

20

ὁ ἀληθὴς θεὸς ἐκ γεννητοῦ

Αἶθρον

Τὸ ἀληθὲς θεὸν ἐκ γεννητοῦ

CoRo

ΦΡΕΙΑ

SOLDATS
SOLDATS

dev se

Sou pa fi a en pa fi a. So. pa. fe. tou i huf. mouz. ge. - a

ΑΣΙΩ

3

hi. a. exi. en. sti!

ΦΡΕΙΑ

35

u. no. St. en. Natapirika. i. No. Gi. a. Jo. nro. St. ka. ra. jo. pa. pa. te.

ΦΡΕΙΑ

36

3

3

pa. va. i. rap. fo. si. de. a. o. er. sti. no. i. Δι

ΦΡΕΣ

ο-νυ εγ' ειν' ο' κ'α σ'τ'α-α-αο Ε'φοο ε'ι-α Π'υρ'α'ρ'ι' ο'ι' κ'α' ο'ι' Α'οι-ε'ν' ο'ι' ο'ο' ο'ο'

ΣΤΡΑΤ-ΣΟΛΔΑΤΣ

ΑΕΙΩΜ

(55)

ΦΡΕΣ $\text{♩} = 120$

- ΠΟΙΗΤΗΣ

Vi
ΣΤΡΑΤ-ΣΟΛΔΑΤΣ

CORO

NAVIGY
 AAS Kai
 PEUPLE
 COTO

Handwritten musical score for NAVIGY, AAS Kai, PEUPLE, and COTO. The score includes vocal lines with lyrics and piano accompaniment. The lyrics include "i. ce. pi. kai!" and "(ANANIAS O AAS)". The piano part has a complex rhythmic pattern with many accidentals.

AAS (SS)
 COTO

Handwritten musical score for AAS (SS) and COTO. The score includes a vocal line with lyrics and piano accompaniment. The lyrics include "Kai Paiza Ba. si. paia".

(F#)

(3 5) ♩ = 88
 (4 8)

SOPR.
 ALTI
 TEN.
 BASS.
 COTO

Handwritten musical score for Soprano, Alto, Tenor, Bass, and COTO. The score includes vocal lines with lyrics and piano accompaniment. The lyrics include "Ba. vre. xpo. ti. xre. = / a. pu. Ba. se. en. pe. - va. re. nis". The piano part has a complex rhythmic pattern with many accidentals.

- 171

Sopr 3 5 3 5 3 5

ALT

TEN.

BAS

To. m. m. pi to' q'is S ni pu HE ka po'ta kai na ni ni S'ou q'is kai pin S'ou tou

FS.

Sopr 3 5 3 5 3 5 3

ALT

TEN.

BAS

ni-spa-re-za-da-pa - ja - va ni ja-va S'ou S'ou tu pa ni q'is ka ta ni pu ni tu S'ou

FS.

SOPR 5 3 5 3 5 3

ALT
Si janta ero Kinty Kuisi tvi - sko

TEN

BAS

90

SOPR

ALT
kui tui ette vai tui tui Bo ju sin Ee xju sing no Si - sko

TEN

BAS

95

Coro

Soprano 5 3 5 3 5 (2+3) (3+2)

Alto

Tenor *dep* *umg*

Bass

E - va Kri - sto - for - ge - je - su - xpe - ste - va - to - tu - so - ba - ra - ge - su - su -

(100)

Soprano 3 5 (2+3) (3+2)

Alto

Tenor

Bass

It - je - su - xpe - ste - va - to - tu - so - ba - ra - ge - su - su -

(105) (110)

Sopr (302) 3 (245) (302) 3

ALT
 Ten - Xu - pa
 6^o - an - no - e - et
 e - et 9^o pa

TEM

BAS

115.

POINT

rit. mosso $\text{♩} = 92$

O - pa - tris mi - Si - vo - su - va - to

120

POINT

3

corpus q. - va - ri - et - at

600

FF

Coro

Король (174)

Политик (Poete)

131

132

133

130
Piu mosso

O. pa. ka. so. di. va. su. va. to

134
Kos. pas. - a. von. Si. kos

135.

136
Ti - ve

os. Mo. pa. y. os. Tu. qf. vi. to

138

139

140

141

brisketnev. tis. so

4

See also

TRIO

O-Xi! Gra-ti-a-ge! Tri-a-ge pro eo qui pro nobis

ASSIM

140

TRIO

o-m-ni-bus! Amen!

ASS

E-loi-E-loi qui non se des ad dextera dei

CHORO

TRIO

cum si-vo-o-pa-ri-um si-vo-um et in terra

ASS-CORO

145

CHORO

150

- 177 -

ΛΑΣ

Μιλι πο. να χα-ύ. παρ χα- α. Λα. Σεν

ΛΑΣ

κοχ. κορ. Λα. κι. και ου- να. Σεν

ΛΑΣ

Λα. ε. που α. α-πο φησ εε-ε-

ΛΑΣ - COPO

155

Allegro d=80

-178-

(16)

ΠΑΡΑΙ

Musical staff for PARAI, showing a treble clef, a key signature of one flat (B-flat), and a 4/4 time signature. The staff contains a few notes and rests.

ΑΔΩ - Κορο

Musical staff for ΑΔΩ - Κορο, showing a treble clef, a key signature of one flat, and a 4/4 time signature. The staff contains a vocal line with lyrics.

Allegro

Σο-λα-ρι-α

Επι-λα-τι-α

80

Piano accompaniment for ΑΔΩ - Κορο, showing a grand staff with treble and bass clefs, a key signature of one flat, and a 4/4 time signature. The music includes various chords and melodic lines.

ΑΔΩ - Κορο

Musical staff for ΑΔΩ - Κορο, showing a treble clef, a key signature of one flat, and a 4/4 time signature. The staff contains a vocal line with lyrics.

ΑΔΩ - Κορο

Musical staff for ΑΔΩ - Κορο, showing a treble clef, a key signature of one flat, and a 4/4 time signature. The staff contains a vocal line with lyrics.

Piano accompaniment for ΑΔΩ - Κορο, showing a grand staff with treble and bass clefs, a key signature of one flat, and a 4/4 time signature. The music includes various chords and melodic lines.

ΦΡΕΙΔ

(165)

Musical staff for ΦΡΕΙΔ, showing a treble clef, a key signature of one flat, and a 4/4 time signature. The staff contains a vocal line with lyrics.

Η Πυρρο οί- νος ε-φτα ψυ-χης

ΠΑΡΑΙ

Musical staff for ΦΡΕΙΔ, showing a treble clef, a key signature of one flat, and a 4/4 time signature. The staff contains a vocal line with lyrics.

Piano accompaniment for ΦΡΕΙΔ, showing a grand staff with treble and bass clefs, a key signature of one flat, and a 4/4 time signature. The music includes various chords and melodic lines.

Κορο

ΦΡΣ

παι(ι) si- vai ;

Ε-ΣΩ ΣΩ ΠΕΡ ΠΕΡ-ΚΑ ΠΑΥ ΛΡΕΙ ΑΙ ΠΟ ΟΥΕ ΤΟ

παι(ι)

ΠΕΡ ΠΕΡ ΟΣ Ε-ΧΑ ΣΙ Α-ΓΓΑ ΠΕΡ ΠΕΡ-ΝΑ ΝΑ ΠΙ ΓΩ ΠΡ ΣΥ.

ΦΡΣΙΔ.

(175)

παι(ι) βγ

βγ !

εφ. νι. σεν. ο. ητ θη αι ι- στο

pp. *fi-a*

ov. ti Su Sa-sa-ti ju. on tu TE-JA W TI ni

pp. *ni-n. ni!*

ti ti tay va ce So. fai sea ti - pu. fi - a

pp. *ba-ci-ju ni!*

Mo-va xos cov tu ti-pu fi-a Su. Su sey ar- pou

ΠΑΝΩ

Piu Mosso

ΑΣΠΩΝ ηου.τα σε φρι. σε. 3. 1η. ος !

Piu Mosso $\text{♩} = 132$ *Allegro*

Piu Mosso $\text{♩} = 132$ *Allegro*

ΑΞΙ 3 3 3

ϋψηθε και φρι. ve ϋψηθε και φρι. ve. 190 να ηη παρ θεου. η Που ηνω. αυ. να

Piu Mosso $\text{♩} = 132$ *Allegro*

Piu Mosso $\text{♩} = 132$ *Allegro*

ΑΞΙ

Ο. των ηη βλε. ηνω ηω ηη δι. να 195

Piu Mosso $\text{♩} = 132$ *Allegro*

ΛΑΟΣ

Piu Mosso $\text{♩} = 132$ *Allegro*

Piu Mosso $\text{♩} = 132$ *Allegro*

Piu Mosso $\text{♩} = 132$ *Allegro*

ΠΡΑΞΗ 2
ΣΚΗΝΗ 4

(Η Ραμνοσύνη κινείται - αχρείβι χαρρακίσι - αχίφρα σην πριονίσι.
Τραγουδι εστραφένου κινετα προς το κινετο)

Ραμνοσύνη

Allegro ♩ = 88



Musical notation for the first system, featuring a treble clef, a 3/4 time signature, and a key signature of one flat. The notation includes a series of eighth notes and rests, with a dynamic marking of *mf* and a fermata over the final note.

Musical notation for the second system, featuring a treble clef, a 3/4 time signature, and a key signature of one flat. The notation includes a series of eighth notes and rests, with a dynamic marking of *mf* and a fermata over the final note.

Musical notation for the third system, featuring a treble clef and a 3/4 time signature. The notation includes a series of eighth notes and rests.

Musical notation for the fourth system, featuring a treble clef and a 3/4 time signature. The notation includes a series of eighth notes and rests.

Piano

Piano

Piano

ΡΕΛΗΘΕ

Handwritten musical notation for the first system of the piece 'ΡΕΛΗΘΕ'. It features a treble clef and a key signature of one flat (B-flat). The melody is written on a single staff with lyrics underneath: 'και το περ αι ω. παντα δυο μου ανη πα τρι σου'. The notation includes various accidentals and dynamic markings.

Piano accompaniment for the first system of 'ΡΕΛΗΘΕ'. It consists of two staves (treble and bass clefs) with complex chordal and melodic patterns. The key signature remains one flat.

ΡΕΛΗΘΕ

Handwritten musical notation for the second system of 'ΡΕΛΗΘΕ'. It features a treble clef and a key signature of one flat. The melody is written on a single staff with lyrics underneath: 'και το περ αι ω. παντα δυο μου ανη πα τρι σου'. The notation includes various accidentals and dynamic markings.

Piano accompaniment for the second system of 'ΡΕΛΗΘΕ'. It consists of two staves (treble and bass clefs) with complex chordal and melodic patterns. The key signature remains one flat.

Empty musical notation for the third system, consisting of a single treble clef staff and an empty bass clef staff.

Piano accompaniment for the third system of 'ΡΕΛΗΘΕ'. It consists of two staves (treble and bass clefs) with complex chordal and melodic patterns. The key signature remains one flat.

Διον.

(40)

Musical notation for the first system, featuring a vocal line and a piano accompaniment.

Διον.

Xw - fu. eu. fo. ya H v K. T. 1

Musical notation for the second system, featuring a vocal line and a piano accompaniment.

Παυλα

Διονυσ.

no. te i. d.

ki - a Tuw St wv

(45)

Musical notation for the third system, featuring a vocal line and a piano accompaniment.

PAROLA

St. m. Sov. i. nne fr. u. pau. o. re en é. ni. tis ye py. tye. pu. xas. Tis de.

PAROLA

kép. Ben ce napako ja. Sui sa de ó w ce

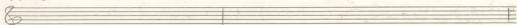
So

PARAP.

ú. no. ti jo. po Tsi pi. jo. nain. nos

Δov. ce. é. fo. Bi. fo. vi. Ek. ap. so. pa. ti. o. sy. s

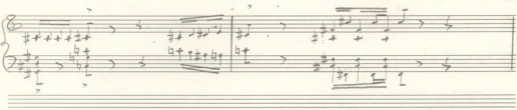
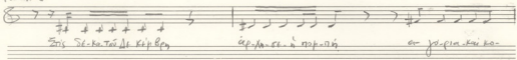
ΡΩΜΗΟΣ.



55



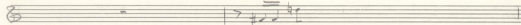
ΡΩΜΗΟΣ



ΡΩΜΗΟΣ

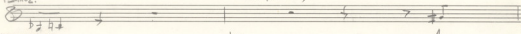


ПАНДРА



РЪМНОЗ.

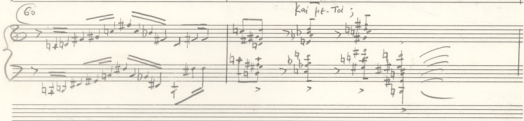
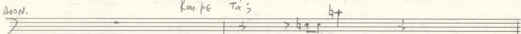
Kai he Tai;



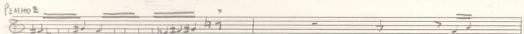
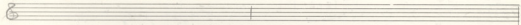
ПРИТЪКЪ-ВЪ.

Kai he Tai;

A.

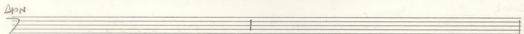
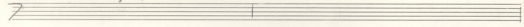


ПАНДРА



ПРИТЪКЪ ВЪ БЪСЪ-КА ТЪ БЪСЪ КЪ.Ъ.МЪ. ТЪ.АИ. ТЪИ

"E-us



ΦΑΙΩΡ

ΡΩΜΟΣ 'Ε-ως ὁ-τος; ὁ-ρι-σῶ-κας;

ΠΡΩΤ ὁ-του ἡ-δεν-αί-τος! ΣΤΑ-ΣΤΙ-ΤΙ ΕΙ-ΧΑ-ΚΕ

ΔΡΩΝ 'Ε-ως ὁ-τος; ὁ-ρι-σῶ-κας;

'Ε-ως ὁ-τος; ὁ-ρι-σῶ-κας;

(65)

ΡΩΜΟΣ

ἦν-τος ὁ-Πα-ρὸς ἡ-μῶν ἡ-με-ρῶν καὶ ὀψὲν ἦν-τος!

Psalm.

O. Pa. TE. pas e. pa. pi. a. kai. to. Eni. Ti. op. Pa. vo. h. pa. TE. pu. pa. pa. vo.

stacc

Psalm.

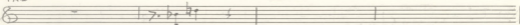
To. TE. e. Xriste i. the. son. Pa. ti. su. var. ;

Psalm.

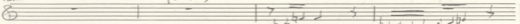
O. Pa. TE. pas e. pa. pi. a. kai. to. Eni. Ti. op. Pa. vo. h. pa. TE. pu. pa. pa. vo.

f

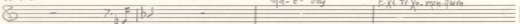
ΦΑΛΛ.



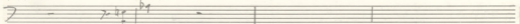
ΡΩΜΗΟ



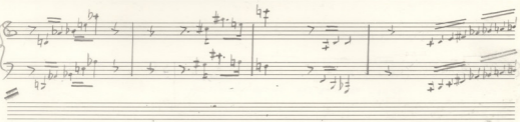
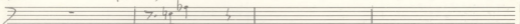
ΔΗΜΟΣ.



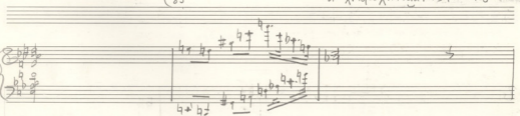
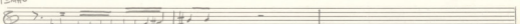
ΓΟΥΝΤ



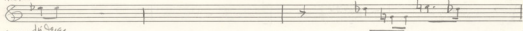
ΑΥΡΑ



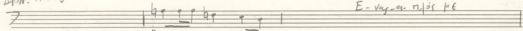
ΡΩΜΗΟ



Πορν.



Αρν. 1η Στρεφ

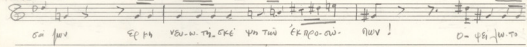


Ὡς στενοὶ τὸ ἦταν;

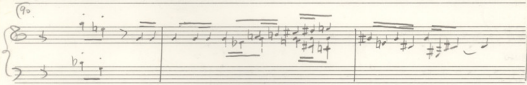
E-vag-a-nis te



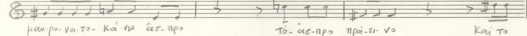
Πορν.



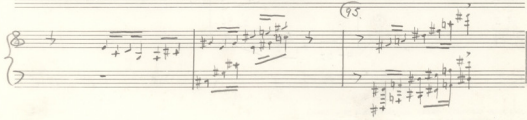
σα φωνε ερην νεω-ν τη εκε ψη τωυ εκ πο-ωυ ουν! ο-ψη-ω-το



Πορν.



μα-ρο-υα-το- και να εσ-πεο το-εσ-πεο ηπι-εσ-υο και το



KARDA

ΠΟΙΗΤ ΠΡΟΣΙ ΕΝ ΚΑΚΕΙ-ΝΟ !

Ω ! 'Ι-Σε-ο-το γι' α. Του Χρωματιστου

ΦΑΙΛΙΑ

Μαί! Τη' σρέ-ψη-τις η' παρ.

αύ-η η. σού-μα

ΦΑΙΛΙΑ

Κα-τα-ψη-ψη

στο μαρ-ρο

Piano

Kape é. M. To se é-nu. ai fup on-ni. M. Pa Te-pa fup

105

Kape é. M. To se é-nu. ai fup on-ni. M. Pa Te-pa fup

Adapt

Piano

O. Zi. pa. To. M. no. Zi. Gi. nu. Kai. Yu. Si. Kai. Tu. Kai. To. Te

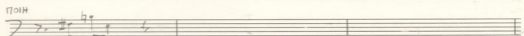
110

O. Zi. pa. To. M. no. Zi. Gi. nu. Kai. Yu. Si. Kai. Tu. Kai. To. Te

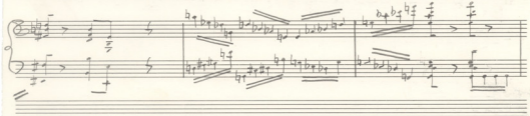
ΦΑΒΛΑ



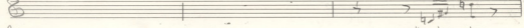
ΡΕΜΠΟ και τί τε ;



ΠΟΙΗ και τί τε ;



ΦΑΒΛΑ



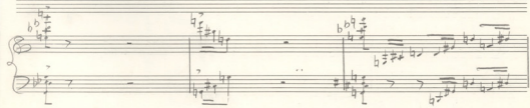
ΡΕΜΠΟ και λοι- νόν ;

ΔΥΜ Εβγα- λε το χύψι και σι- νε α- κούστε το φων. νι τού

ΠΟΙΗ και λοι- νόν ;

ΔΙΟΝ και λοι- νόν ;

(115)



ΡΑΜΠΟ

φωτὸς φωτὸς - ἔσται
 ἡ-σὺν τοῖς κτῆ
 ἡ-σὺν τοῖς κτῆ
 ἡ-σὺν τοῖς κτῆ

ΡΑΜΠΟ

ὡς τὸ πρῶτον ἔσται
 ὡς τὸ πρῶτον ἔσται
 τὸ βίβησιν Ἄνερον

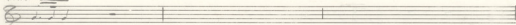
(120)

ΡΑΜΠΟ

ΠΑΙΔΙΑ

Κὴ-τὶ σὺν τῶν κτῆ
 ἡ-σὺν τοῖς κτῆ
 ὡ!

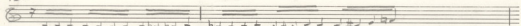
ΦΑΙΝΡΑ



Εὐ στυ-χῶ



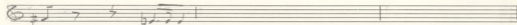
Ρουνο



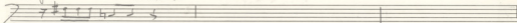
Ποιητὴς Κασσιμὸς τῶν Ἰνδουσιανῶν ὁ-ροῦ μετὰ τὸν Πάου-λο-ν ἔχ-τερον τὸν ὄ-νη ρη φᾶ νο κο-ῖο



ΡΟΜΠΟ

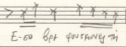


ΡΟΜΠΟ ΦΟΥΣΚΩ-ΥΕ

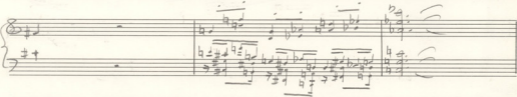


ΔΙΟΝ. ΚΑΙ-Η-ΚΑΙ-ΔΕΙ-ΣΑ

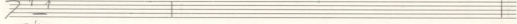
ΠΡΟΣ ΤΗΝ
ΠΡΟΜΗΘΕΑ
ΟΡΓΑΝΟΝ



Ε-ΣΤΙ ΒΑΤ ΦΑΡΜΑΚΕΥΣΙ



ΠΛΟΥΝ. Ε-ΠΙ ΟΥ-ΛΙ-Α-ΙΝ



ΤΡΑΓΩΝ



- 2ο μέρος

ΡΩΜΝΟ

ΠΡΩΗ (ΜΑΡΤΥΡΙΑΣ)

ΔΗΜΟΣ Μαρτυρία Χρὶ Φθ

καὶ ποῖς φησικε;

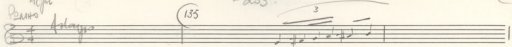
ΔΡΑΜΑ

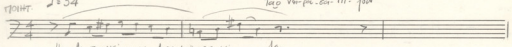
ΡΩΜΝΟ

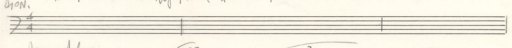
ΔΗΜΟΣ

ὁ ἄριστος αὐτὸς ἐστὶν ὁ θεὸς καὶ ὁ πατήρ σου ὁ ἀληθινός

Adagio - 203 - 135


ΠΑΝΟΣ


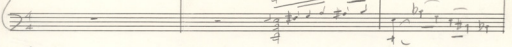
ΤΡΟΠΗ $\text{♩} = 54$


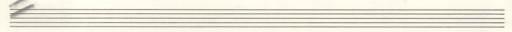
ΔΙΩΝ.



Trois ven-tes-tes-ti-tes
H- li-tes-tes-ti-tes-ti-tes-ti-tes

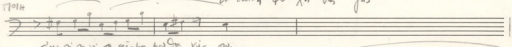
Adagio 135

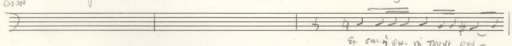
ΠΑΝΟΣ


ΤΡΟΠΗ



ΔΙΩΝ.


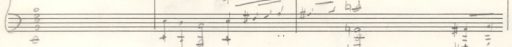
ΠΑΝΟΣ


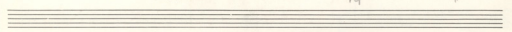
ΤΡΟΠΗ


ΔΙΩΝ.


Et-tes-tes-ti-tes-ti-tes-ti-tes
Et-tes-tes-ti-tes-ti-tes-ti-tes

ΠΑΝΟΣ


ΤΡΟΠΗ


ΔΙΩΝ.


Pan.

Voiz

Движ

A. 45. 576 11 20 24 28 32 36 40 44 48 52 56 60 64 68 72 76 80 84 88 92 96 100 104 108 112 116 120 124 128 132 136 140 144 148 152 156 160 164 168 172 176 180 184 188 192 196 200

(140)

Pan.

Voiz.

Движ

576 11 20 24 28 32 36 40 44 48 52 56 60 64 68 72 76 80 84 88 92 96 100 104 108 112 116 120 124 128 132 136 140 144 148 152 156 160 164 168 172 176 180 184 188 192 196 200

(145)

125

ΠΩΗ

you - si - in - ar - ge - ce - su - an - noi - sou

ΠΩΗ

ΔΩΔ

an - noi - ce - su - an - xi - m - ou - si - kai

ΔΩΔ

ΔΩΔ

ΠΩΗ

ΠΩΗ

Ti - mo - ra - sui - fas - tu - pa - tri - ar - chi - fua - o - la - ta - tra - pan - you - sou

ΔΩΔ

noi - tou - ko - i - tou

ΔΩΔ

150

P2M

Tin - nona pa ju Si pa fe. ay a pa pa. fe ou Sa noi pas oi pa. ri Tau noi.

NOIH

qui Sa pa vir. Sa - ouw

ANW

Tin - nona pa ju Si pa fe. ay a pa pa. fe ou Sa noi pas oi pa. ri Tau noi.

P2M

dan ku tau vt paw

NOIH

dan - ta to pa ju si. Sa pa va ft - vit - tau.

ANW

dan ku tau vt paw

(155)



ΦΑΙΣΑ

PCM

TRIA or for piano

DAHA

TRIA

PCM

ΕΡΧΕΤΑΙ ΚΑΙ Σ' ΑΝΘ

PCM

ΕΡΧΕΤΑΙ ΚΑΙ Σ' ΑΝΘ

(163) (165)

ΦΑΙΣΑ

TRIA

PCM

ΕΡΧΕΤΑΙ ΚΑΙ Σ' ΑΝΘ

PCM

ΕΡΧΕΤΑΙ ΚΑΙ Σ' ΑΝΘ

ENTRÉE DU CORO

MS

[ΑΣΤΡΑΦΕΣ ΒΡΟΧΕΣ - ΠΟΛΥ ΣΥΝΑΓΕΣ]

[ΜΗΔΕΙ ΟΥΔΕ ΤΡΕΧΟΜΕΝΑ]

CoRo

CoRo

PCM

ΕΡΧΕΤΑΙ ΚΑΙ Σ' ΑΝΘ

Σ. ΚΑΙ ΟΙ ΝΑΤΑ

DAHA

ΑΝΘ

ΤΩ ΑΡΘΡΟ ΚΑΙ ΚΑΙ

(167) (168)

CoRo

CORO

DRON. ¹⁰¹ αὐτὴν ἔσται τὸ βῆμα
 Ζωνεῖς θεοί; αὐτὴν ἔσται τὸ βῆμα
 αὐτὴν ἔσται τὸ βῆμα

CORO (BPOVTO)

DRON. ¹¹⁶ καὶ οὐκ ἔστιν ἄλλος. καὶ
 καὶ οὐκ ἔστιν ἄλλος;

DRON

ἄλλοι οὐκ ἔσται τὸ βῆμα
 ἄλλοι οὐκ ἔσται τὸ βῆμα

ATTEUS

(1)

Musical notation for the first system of 'ATTEUS'. It consists of a vocal line and a piano accompaniment line. The vocal line starts with a treble clef and a key signature of one sharp (F#). The piano accompaniment starts with a bass clef and the same key signature. The lyrics 'At o' ro et et xou-er ni' are written below the vocal line.

Musical notation for the second system of 'ATTEUS'. It continues the vocal and piano parts from the first system. The lyrics 'o. ti. ex y ra nis.' are written below the vocal line. A circled number '175' is written above the piano part.

ATTEUS

(2)

Musical notation for the first system of the second 'ATTEUS' section. It consists of a vocal line and a piano accompaniment line. The vocal line starts with a treble clef and a key signature of one sharp (F#). The piano accompaniment starts with a bass clef and the same key signature. The lyrics '(2) an' ter au u. n-or u- quo hoc. te re era fr va' are written below the vocal line.

Musical notation for the second system of the second 'ATTEUS' section. It continues the vocal and piano parts from the first system.

Musical notation for the third system of the second 'ATTEUS' section. It continues the vocal and piano parts from the previous systems. The lyrics 'qui o-jo tri-um-fo- ur' and 'su-ro-ia' are written below the vocal line.

Musical notation for the fourth system of the second 'ATTEUS' section. It continues the vocal and piano parts from the previous systems.

Coro

ATTEND

(12/8)

va-ep-qa. Si sw nrota ho to Sa va n tu noi-a. ti

Coro

(18)

Coro

Ta fo a h. pou ta vr pa traye. sou ti Sévra nrota.

(4)

CHORUS

On-ja Si-a-Dei. Kai

PEAN

Dee pa vi- kai

DRUM

Pa-va pa- hi-ja ka-De-

CHORO

185

ATTACIO

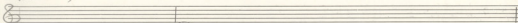
H di-sa Si-a-Dei pa-

DRUM

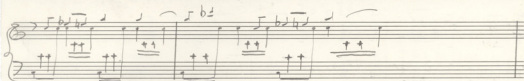
Ta-va pa-De-ai ta-ti-er pa-va-va

Choro

Coro kai
Soloist (Tutti)



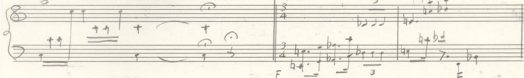
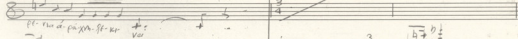
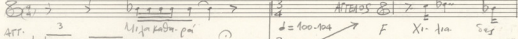
ARRENO



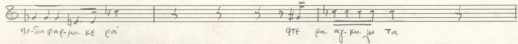
(TO PDS TIVTA I ENTONA MEVLO)

(Asterisks
Circles)
Allegro agitato

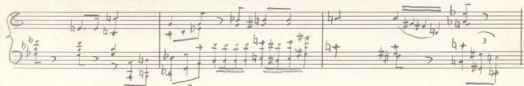
Coro-Solo



ARR



(195)



Coro

Arr > >

Coro ni-ka- kai Su-va-no eay nbi 3'

Zno.Ej. la Su no'te gap-

Arr

Coro A-ko Su-npu-to-pap pa-kt pa

Arr

Coro To-ko. pi a-Se-i. ki ke ca

A-no. youSu Byxi:

Coro



Αγιο. Αδαμης

Παινο $\text{♩} = 54$

Η ΠΑΡΟΥΣΙΑ ΠΡΟΣ ΤΩΝ ΠΟΙΗΤΗ

ΠΟΙΗΤΗ b_2 q_2 b_2 b_2 b_2 b_2 b_2 b_2 b_2 q_2 b_2 Tar. b_2 b_2 b_2

Η Η τα. ρε-α τα γυμνός xi τα

(Ο ΠΟΙΗΤΗΣ ΕΚΧΡΙΖΕΙ ΠΡΟΣ ΤΟ ΚΟΙΝΟ)

Η Η. τα ρε - - α α -

Ο ΛΑΟΣ ΣΤΡΕΦΕΤΑΙ ΠΡΟΣ ΤΩΝ ΠΟΙΗΤΗ

Soprano
R Ten.
Bass

Η Η τα ρε

Αγιο. Αδαμης

22a

ni - faw
Ta - po - va fai pa...

(Piano)
TRIN TIN TIN

S
ni - - - faw
Gm Dm
na Gm - Dm na Dm Gm - Vm

A
ni - faw
Gm Dm
na Gm Dm na Dm Gm - Vm

T
ni - - - faw
Gm Dm
na Gm Dm na Dm Gm - Vm

B
ni faw
Gm
Gm - Dm na Dm Gm - Vm

22b

av. nos - sou vai ve Xti sou oi kai fou Tou - - kos.

Xti sou oi kai fou Tou kos - - - -
 Xti sou oi kai fou Tou oi - kai fou tou kos -
 Xti sou oi kai fou Tou oi - kai fou tou kos -
 Xti - sou oi - oi - kai fou oi kai fou Tou - kos.

Allegro ♩ = 100-104

Perc

Viol.

Th' spring' fall m' ea' ð. f'at'ur'ga ju' Sta' r'oi

Acorn

hoo

215 (O MAS-KAN OI AAOI -
 HES TON ATRAS)

S

Da an'na'nd'oi Da r'up'ia'nd'oi Da an'na'nd'oi Da r'up'ia'nd'oi

Kou ft' Tai Kou ft' Tai

A

T

Da an'na'nd'oi Da r'up'ia'nd'oi Da an'na'nd'oi Da r'up'ia'nd'oi

B

215

Coro

ΑΡΤΕΜΙΣ

Handwritten musical notation on a single staff, starting with a treble clef and a common time signature. The melody consists of two measures. The first measure contains a triplet of eighth notes. The second measure contains a quarter note followed by a quarter rest. The lyrics "α ποσει ηρα ηε νη ηε!" are written below the notes.

Five sets of empty musical staves, each consisting of a grand staff (treble and bass clefs).

Handwritten musical notation on a grand staff. The top staff contains a melody with a triplet of eighth notes. The bottom staff contains a bass line with chords and some triplets. The notation is more complex than the first staff, including various accidentals and rests.

(ΕΠΙΚΕΝΤΡΟ Ο ΒΟΗΘΗΣ)

Allegro $\text{♩} = 72$

ΠΟΙΗΤ

Allegro $\text{♩} = 72$

Τὴ κα- να- ρία ἡσὸ δι- σπᾶσι - λῶσι τοὶ τοὶ γῶσι

Allegro

ATT $\text{♩} = 100-104$

ΠΟΙΗΤ

$\text{♩} = 100-104$

Ἡ σὶ σὶ πε- νι- λ- πα- χῶ

Coro

Allegro

Ὀὐ (ΠΡΟΣ ΤΟΝ ΑΓΓΕΛΟ)

$\text{♩} = 100-104$

Καί- με- τοί; Καί- με- τοί;

Allegro

Coro

Alf

Coro *Tai-ta-ta pa-ta-i-e Pa-ka-tai-Xtai*

225

Tai i-e Pa-ka-tai-Xtai Tai-ta-ta

PIANTAS

Coro *Kai-ti Gu-ji Ve-to-av*

Alf

Coro *Sei-ni-vo-je-vo*

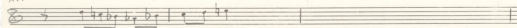
Kai-ti-Gu-ji-ve-to-av Sei-ni-vo-je-vo

To-er-Se-ple-ria-a-pax-va

Coro

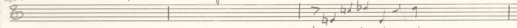
ATT

3



Coro

ai - no - na ft pa te - ra yi

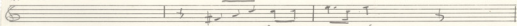


Kai ft Tai kai te Tai s



ATT

3



Cor

ai - no - na ft pa te - ra yi

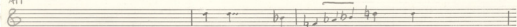


185



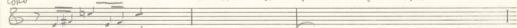
ATT

3



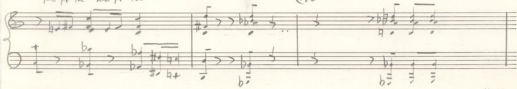
Coro

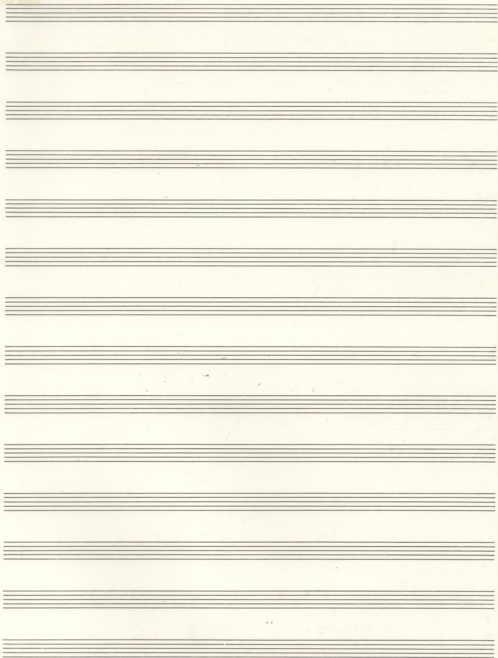
H. a. Sa ft - na - a - pai Xva

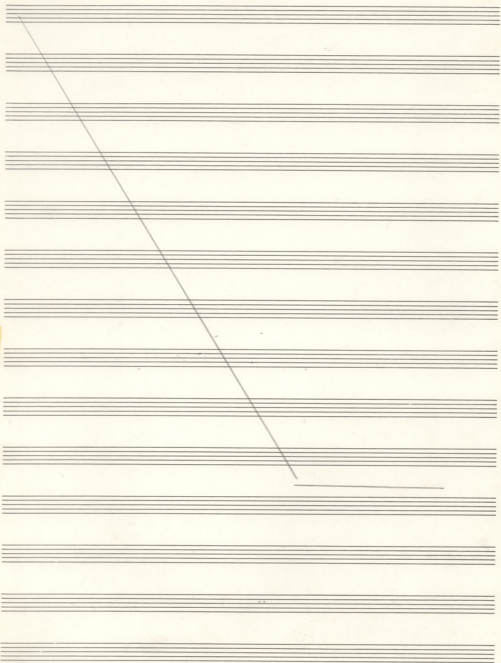


Kai ft Ta Kai ft Tai

190







Alf

3

Alf *qu vi. vii. -* *ya te. sa. cro. ai. -* *tu*

Soprano
Soprano

Alto
Alto

Tempo
Moderato

Basso
Basso

235

3

3

240

S.
φ.δ
Α
P.
T.
ηχοητη
BAS
φ.δ

tu *Do. fa do. fa* *Do fa te ya te cry tu* *Do fa te ya te cry tu*

tu *Do. fa do. fa* *Do fa te ya te cry tu* *Do fa te ya te cry tu*

tu *Do. fa do. fa* *Do fa te ya te cry tu* *Do fa te ya te cry tu*

tu *Do. fa do. fa* *Do fa te ya te cry tu* *Do fa te ya te cry tu*

tu *Do. fa do. fa* *Do fa te ya te cry tu* *Do fa te ya te cry tu*

tu *Do. fa do. fa* *Do fa te ya te cry tu* *Do fa te ya te cry tu*

ΔΙΟΝΥΣΟΣ
ΠΙ.

240

ΔΙΟΝ

Coro $\text{K}^{\text{ti}} \text{pa} \text{on} \text{E}^{\text{i}} \text{-} \text{I} \text{a}$ $\text{En} \text{. m. p.} \text{K}^{\text{ti}}$

ΦΑΙΣΙΡΑ - ΔΙΗΜΟΣ - ΠΟΥΝΕΜΕΣ
 ΡΕΜΗΝΣ. ΡΟΥΜΗΣ

$\Delta \text{I} \text{-} \text{o.} \text{v} \text{u} \text{re} \text{Ti}$

ΔΙΟΝ

Coro $\text{To} \text{N}^{\text{e}^{\text{i}} \text{o.}} \text{m} \text{e} \text{S} \text{u} \text{r} \text{-} \text{t} \text{u} \text{pa.}$

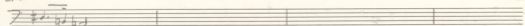
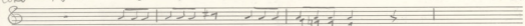
Φ. Δ. Η
 ΡΕ-ΠΟΥ

245

Coro

229

Solo

Coro
Sui freg' nei

Φ. Δ. Ποιητ

ηφ-ηει. ευ. θυς να πας. ηεις ηφ-ηει. ευ. θυς να πας ηεις

P. η.

ηφ-ηει. ευ. θυς να πας. ηεις ηφ-ηει. ευ. θυς να πας ηεις

Arr

Ας ετοι. πα. μι.

αυ. ε. δώ

να-οί

Coro

(Δ1) (ΕΠΙΚΕΝΤΡΟ: Ο ΠΟΙΗΤΗΣ)

Αδρ. - Adagio $\text{♩} = 65$
ΑΓΓΕΛΟ $\text{♩} = 68$

ΠΟΙΗΤ

A ψι. σ'ετ ηε ρα σ'ημε-νι- οω ηυμνιςτερι πο- ποι ε'ετ ηα-ηη ηε να

Αδρ. - Adagio

S (ΠΡΟΣΤΟΝ ΠΟΙΗΤΗ)

ΕΙ. εωε η' ψυ Χη ηη ηη ηη

A ΕΙ. εωε η' ψυ Χη ηη ηη ηη

T ΕΙ. εωε η' ψυ Χη ηη ηη ηη

B ΕΙ. εωε η' ψυ Χη ηη ηη ηη

Αδρ. - Adagio

Γ 1

ΠΟΙΗΤ. Αρχαί

Handwritten musical notation for the vocal line, including notes, rests, and accidentals. The lyrics are: Αρχαί τῆ πο-υα. Σῆναι καὶ οἱ σφραγίσαντα τῶν γυναι-

Handwritten musical notation for the piano accompaniment, including notes, rests, and accidentals.

All^o

Handwritten musical notation for the vocal line, including notes, rests, and accidentals. The lyrics are: καὶ τῶ καὶ τῶ τῶ

188

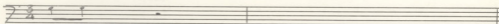
Handwritten musical notation for the vocal line, including notes, rests, and accidentals.

All^o

Handwritten musical notation for the piano accompaniment, including notes, rests, and accidentals.

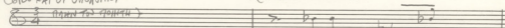
Allargo

ΠΟΙΗΤ $\downarrow = 900-904$



Coro H^{f} Ch
CORO KAI OI UPODOXONTEI

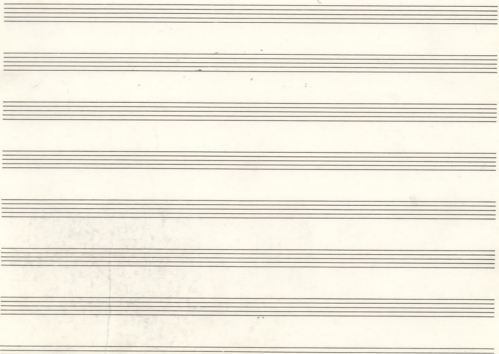
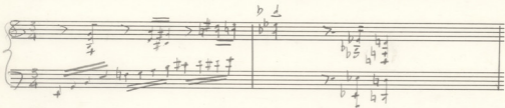
(ΠΡΟΣ ΤΟΝ ΑΓΓΕΛΟ)



Ti-Bje ηηγ 74

Allargo

2^{da}



Coro

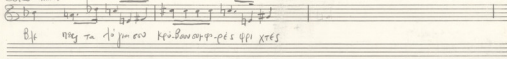
A page of 14 blank musical staves, each consisting of five horizontal lines. The staves are arranged vertically and are completely empty of any musical notation or text. The paper is aged and yellowed, with some minor stains and a small piece of tape at the top left and bottom right corners.

-233-

ΡΑΜΟΣ



CORO + ΑΛΛΟΙ



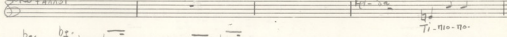
Τι ημε τα δ' ομν ου κη. Βαν αυτη. ρετ φρι χρετ



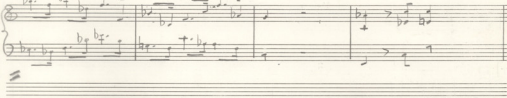
ΡΑΜ



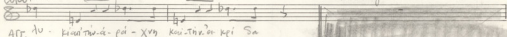
CORO + ΑΛΛΟΙ



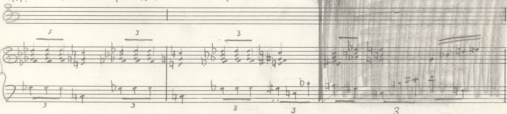
ηο. ηο. ιυ αν' τιν ου. ροι. Χρη. και. τιν ου. κη. Σα



CORO + ΑΛΛΟΙ



ΑΓΓ. Ιυ. κη αν' τιν ου. ροι. Χρη. και. τιν ου. κη. Σα



CORO

1^o Adagio - Adagio (d=50)

POINTAS

In po va Gi mi po tu pa ro si ep pa gi fan o - for ta - ren ju si lu

2^o Adagio - Adagio

POINTAS

for - no ra pa ju si lu te - tis a - po sta - fi sou sou

3^o Adagio - Adagio

POINTAS

for - no ra pa ju si lu te - tis a - po sta - fi sou sou

4^o Adagio - Adagio

POINTAS

for - no ra pa ju si lu te - tis a - po sta - fi sou sou

5^o Adagio - Adagio

POINTAS

for - no ra pa ju si lu te - tis a - po sta - fi sou sou

6^o Adagio - Adagio

POINTAS

for - no ra pa ju si lu te - tis a - po sta - fi sou sou

7^o Adagio - Adagio

POINTAS

for - no ra pa ju si lu te - tis a - po sta - fi sou sou

8^o Adagio - Adagio

POINTAS

for - no ra pa ju si lu te - tis a - po sta - fi sou sou

9^o Adagio - Adagio

POINTAS

for - no ra pa ju si lu te - tis a - po sta - fi sou sou

10^o Allegro (d=100-104)

ATTENZIONE

POINTAS

na pas an pa - mi - tu nou ju ni kai tuu vr

11^o Allegro

POINTAS

na pas an pa - mi - tu nou ju ni kai tuu vr

12^o Allegro

POINTAS

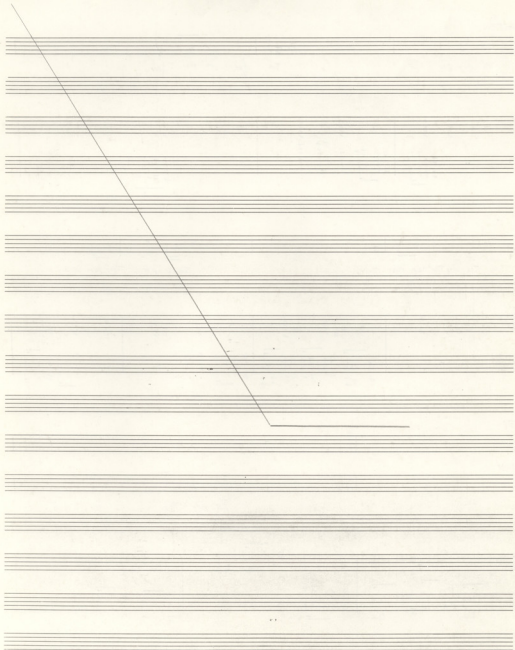
na pas an pa - mi - tu nou ju ni kai tuu vr

13^o Allegro

POINTAS

na pas an pa - mi - tu nou ju ni kai tuu vr

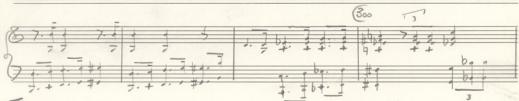
Coro



Διον.



φv. οη | τi φv. σα βα-πα-τηρ θεi!



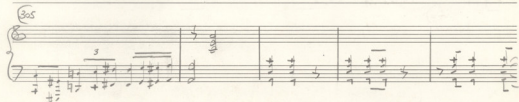
Διον.




Αγγ



Βλε πω τi ηε γει



(Τὸ πῦρ Καρφύρα)

Άρσι
Αδαιγος

ΦΑΙΣ

Handwritten musical notation on a five-line staff with a treble clef. The time signature is 12/8. The staff contains a few notes and rests.

ΡΑΜ

Handwritten musical notation on a five-line staff with a treble clef. The time signature is 12/8. The staff contains a few notes and rests.

ΔΗΜ

Handwritten musical notation on a five-line staff with a treble clef. The time signature is 12/8. The staff contains a few notes and rests.

ΠΟΥΝ.

Handwritten musical notation on a five-line staff with a treble clef. The time signature is 12/8. The staff contains a few notes and rests.

ΑΤΤΑ

Handwritten musical notation on a five-line staff with a treble clef. The time signature is 12/8. The staff contains a few notes and rests.

ΡΟΙΗ

Handwritten musical notation on a five-line staff with a treble clef. The time signature is 12/8. The staff contains a few notes and rests.

ΔΙΟΝ

Handwritten musical notation on a five-line staff with a treble clef. The time signature is 12/8. The staff contains a few notes and rests.

Flto

Handwritten musical notation on a five-line staff with a treble clef. The time signature is 12/8. The staff contains a few notes and rests.

COHO

Handwritten musical notation on a five-line staff with a treble clef. The time signature is 12/8. The staff contains a few notes and rests.

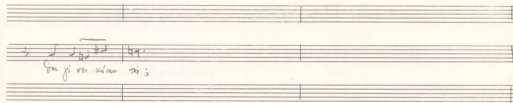
Rall

Handwritten musical notation on a five-line staff with a treble clef. The time signature is 12/8. The staff contains a few notes and rests.

Handwritten musical notation on a five-line staff with a treble clef. The time signature is 12/8. The staff contains a few notes and rests.

Five empty musical staves.

COHO

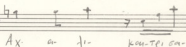


(AFF)

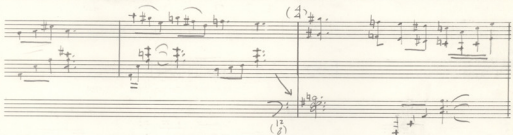


(POIN)

(4)



(3)5



ηρε ηερ να φω - γη

ηρε ηερ να φω - γη

ηρε ηερ να φω - γη

φω. γη

ο - ν - σε ηρο σα ηι δε - ι - κι ηρε - ηερ να φω - γη

ΠΡΟΒΟΛΗ ΓΙΑ ΝΑ ΓΙΝΕΙ ΤΟ ΦΩΣ ΚΟΚΚΙΝΟ

ηρε ηερ να φω - γη

φω. γη

κατ' εν ηι δε - ι - κι

ηρε ηερ να φω - γη

Φωνη
 ηρε- ηεί α- ηο Του τη τη ηί
Πον
 ηρε ηεί α- ηο- Του τη τη ηί
 και το τραγούδι του νε

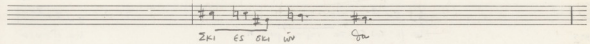
Αλλη
 ηρε ηεί α- ηο Του τη τη ηί
Πονη
 ηρε ηεί- να ψο- - γη

ΑΤΤ
 α- ηο του τη τη ηί
 Σε νε θα- ναυ βίωτοι

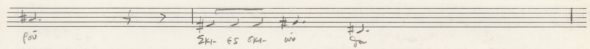
Πολη
 ηρε- ηεί να και οι θε οι
Αιων
 ηρε ηεί να ψο- - ηί

Κορο
 και οι θε- οι
 και οι θε- οι
 και οι θε- οι

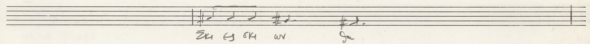
Κορο



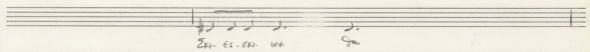
Σκι ες σκι ων Ων



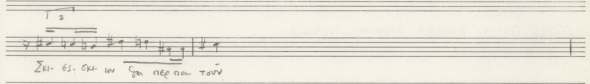
Σκι ες σκι ων Ων



Σκι ες σκι ων Ων

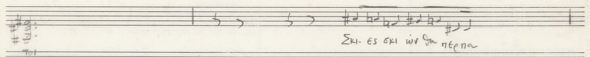


Σκι ες σκι ων Ων

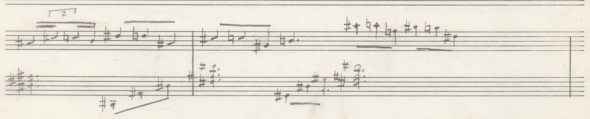


Σκι ες σκι ων Ων ηέρ ηα τών

Ο ΠΟΙΗΤΗΣ ΠΕΡΝΕΙ ΤΟ ΠΕΡΙΣΤΡΟΦΟ ΑΠΟ ΤΟ ΤΡΑΠΕΖΙ
ΚΑΙ ΤΟ ΒΑΖΕΙ ΣΤΟΝ ΚΡΟΤΑΦΟ



Σκι ες σκι ων Ων ηέρ ηα



Σκι ες σκι ων Ων ηέρ ηα

Musical score system 1. Includes vocal line with lyrics: "Tu vas en feu h Ma fi sou sou tu vas en feu h".

Musical score system 2. Includes vocal line with lyrics: "Tu vas en feu h Ma fi sou sou tu vas en feu h".

Empty musical staff.

Musical score system 3. Includes vocal line with lyrics: "Tu vas en feu h Ma fi sou sou tu vas en feu h".

Musical score system 4. Includes vocal line with lyrics: "Tu vas en feu h Ma fi sou sou tu vas en feu h".

Musical score system 5. Includes vocal line with lyrics: "Tu vas en feu h Ma fi sou sou tu vas en feu h".

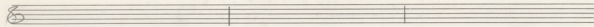
Musical score system 6. Includes vocal line with lyrics: "Tu vas en feu h Ma fi sou sou tu vas en feu h".

Musical score system 7. Includes vocal line with lyrics: "Tu vas en feu h Ma fi sou sou tu vas en feu h".

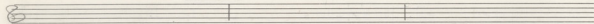
Musical score system 8. Includes vocal line with lyrics: "Tu vas en feu h Ma fi sou sou tu vas en feu h".

Coro

DAW

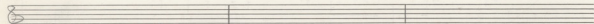


PEM

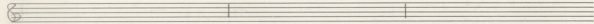


ΛΑΟΣ ΚΑΙ ΠΡΕΤΑΞΕΝΙΣΤΕΣ
ΧΑΝΟΝΤΑΙ ΜΕΣΑ ΣΤΟ ΣΥΚΑΔΑ

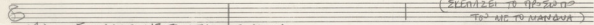
ΔΗΜ



ΠΟΥΝ

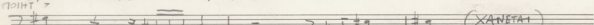


ALT



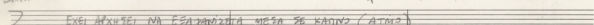
(ΣΥΝΑΞΕΙ ΤΟ ΠΡΟΣΩΠΟ
ΤΟΥ ΜΕ ΤΟ ΜΑΝΑΒΑ)

(4) ΣΗΜΑΔΕΥΕΙ ΜΕ ΤΟ ΟΠΛΟ ΤΟ ΚΟΙΝΟ



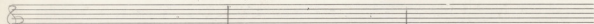
(ΧΑΝΕΤΑΙ)

ALT! ΠΥΡΟΣ ΧΩ ΤΟ ΜΕΤ

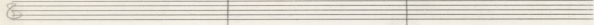


ΕΧΕΙ ΑΡΧΗΣΕΙ ΝΑ ΕΣΑΦΑΡΙΖΕΙ ΜΕΣΑ ΣΤΟ ΚΑΙΝΟ (ΑΤΜΟ)

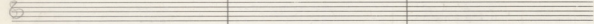
SOPR



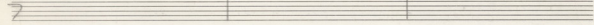
ALT



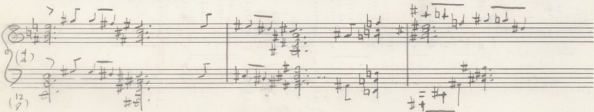
TEN.



BAS.



dim.



Coro

ΕΚΟΤΑΔΙ
ΤΕΝΙΚΟ

(ΑΛΛΑΙΑ - ΑΡΓΑ)

330

(ΑΛΛΑΙΑ - ΑΡΓΑ)

ΜΟΥΣΙΚΟΣ ΕΚΔΟΤΙΚΟΣ ΟΙΚΟΣ
Κ. ΠΑΠΑΓΡΗΓΟΡΙΟΥ - Χ. ΝΑΚΑΣ

ΠΑΝΕΠΙΤΗΜΙΟΥ 39 - ΑΘΗΝΑ
ΤΗΛ. 3251144 & 3221786

Μαν. Γκαμπριέλι 13.12.85
Αθήνα

330
No 10

COLO

