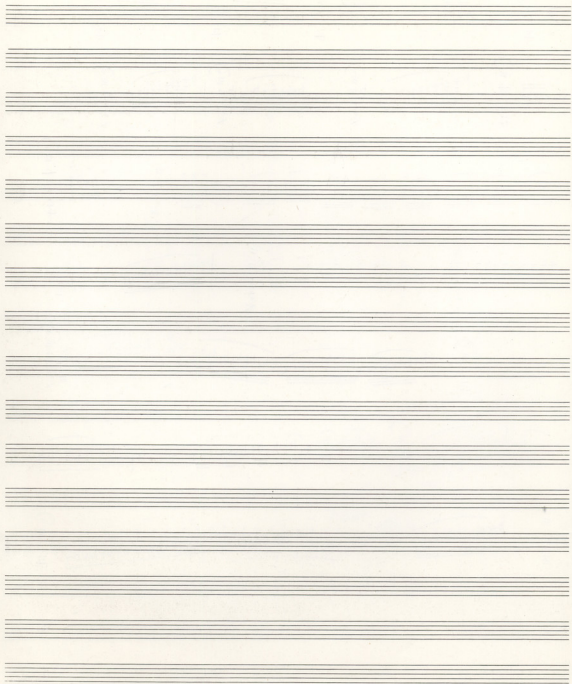
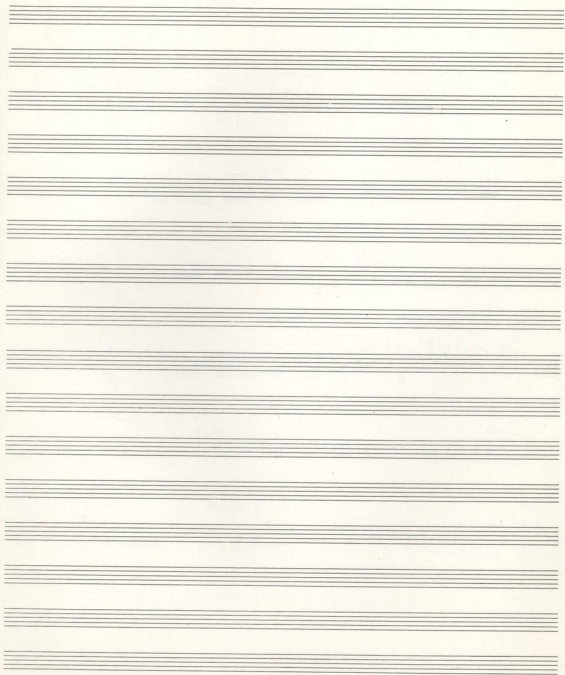


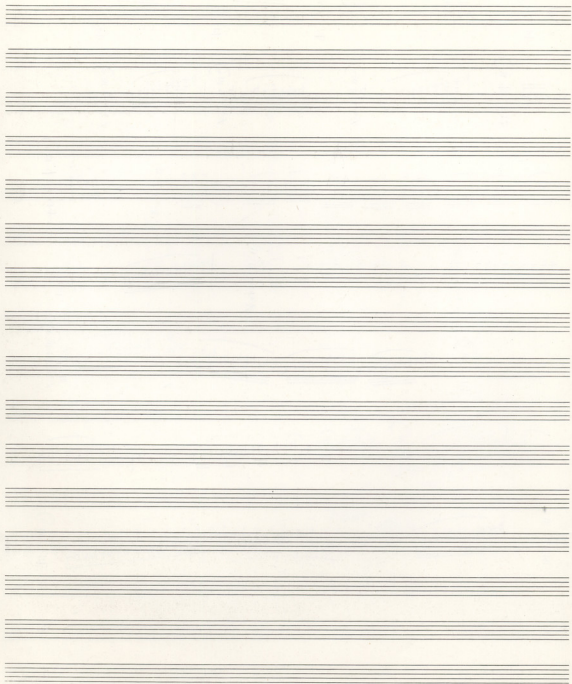
ΜΟΝΟΥΣ

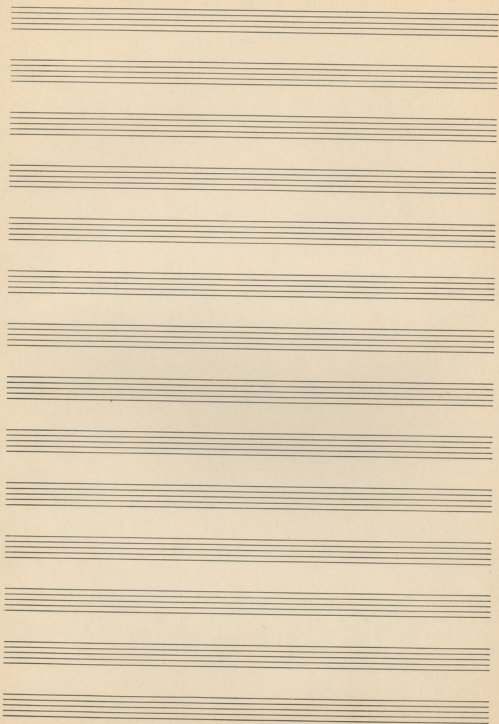
Nº 12
Ad Libitum

Handwritten musical score for 'ΜΟΝΟΥΣ' (Monous), No. 12, Ad Libitum. The score consists of 11 staves of music. The notation includes various rhythmic values, accidentals (sharps, flats, naturals), and dynamic markings such as 'f' (forte) and 'x' (fortissimo). The music is written in a single melodic line on a grand staff. The notation is dense and expressive, with many slurs and accents. The piece concludes with a 'tremolo' marking over a series of rapid notes.









Armin

~~WUNDERBAR~~ (Answer)
TO TENEVARIO TENCAP

(Percussion)

LA cem cem

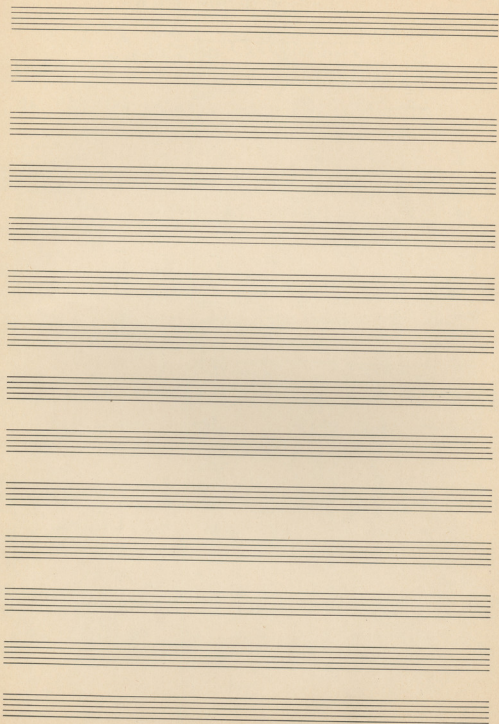
LA LA cem

cem LA cem silm RE silm cem

silm cem LA cem cem

cem cem LA cem LA cem

cem silm LA cem cem LA



IX

Cresc. Δ 

DIONUZES

21 de 20

cem Fica Kai xa cem

cem sang amu pipu si ka

na hi tipu a pa pa pa Do SOL

7 IV NTA

na kapi a pa pa pa pa pa pa FA cem

7 IV NTA

na pa pa pa pa pa pa pa pa FA cem cem

na pa pa pa pa pa pa pa pa SOL cem Zonta Ber

na pa pa pa pa pa pa pa pa Sib FA

Handwritten musical notation, first system. Treble clef, 3/4 time signature. The word "Canto" is written above the staff. A large "8" is written above the first measure. The notation includes notes, rests, and bar lines.

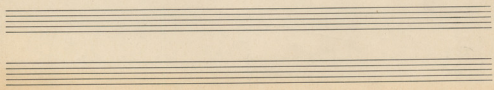
Handwritten musical notation, second system. Treble clef, 3/4 time signature. A circled "5" is written above the first measure. The notation includes notes, rests, and bar lines.

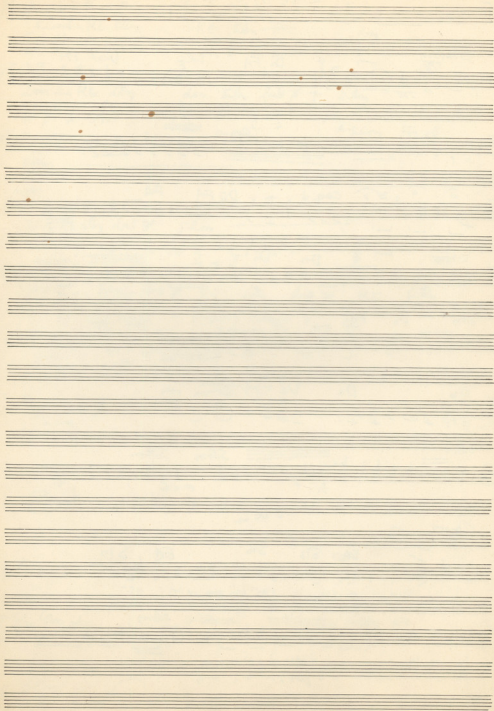
Handwritten musical notation, third system. Treble clef, 3/4 time signature. A circled "10" is written above the first measure. The notation includes notes, rests, and bar lines.

Handwritten musical notation, fourth system. Treble clef, 3/4 time signature. The notation includes notes, rests, and bar lines.

Handwritten musical notation, fifth system. Treble clef, 3/4 time signature. A circled "15" is written above the first measure. The notation includes notes, rests, and bar lines.

Handwritten musical notation, sixth system. Treble clef, 3/4 time signature. The notation includes notes, rests, and bar lines.





Adapted
Compos

ΣΑΜΠΑΧ

ΕΙΣΑΓΩΓΗ

Do FA FA Do FA
Cem
Do FA FA Cem Cem
Cem Do FA FA Sibm
Sibm Do Do 3 Cem
Cem FA FA Sibm
Sib Do Do Sibm
Sibm Sibm Sibm Sibm

ΚΑΡΟΣ

FA Sib Sib FA Sib
Sib Sibm Sibm Sibm
Sibm Sibm

Μία κι ένα και
Χαρά κι αγάπη
Μία κι ένα και
Χαρά κι αγάπη

Όχι για πρόσωπο
Όχι για πρόσωπο
Όχι για πρόσωπο
Όχι για πρόσωπο

Handwritten musical notation on a five-line staff. The key signature is one sharp (F#) and the time signature is 3/4. The melody is written in a treble clef. The lyrics are: "selmon RE selm / Sura Ma qe paxer va / me selm qaxer va".

Handwritten musical notation on a five-line staff. The key signature is one sharp (F#) and the time signature is 3/4. The melody is written in a treble clef. The lyrics are: "dom - RE dom / dom selm fact / selm".

Handwritten musical notation on a five-line staff. The key signature is one sharp (F#) and the time signature is 3/4. The melody is written in a treble clef. The lyrics are: "selm".

Handwritten musical notation on a five-line staff. The key signature is one sharp (F#) and the time signature is 3/4. The melody is written in a treble clef. The lyrics are: "selm RE selm doct / selm".

Handwritten musical notation on a five-line staff. The key signature is one sharp (F#) and the time signature is 3/4. The melody is written in a treble clef. The lyrics are: "selm dom doct RE dom doct RE selm".

Handwritten musical notation on a five-line staff. The key signature is one sharp (F#) and the time signature is 3/4. The melody is written in a treble clef. The lyrics are: "selm selm".

Handwritten musical notation on a five-line staff. The key signature is one sharp (F#) and the time signature is 3/4. The melody is written in a treble clef. The lyrics are: "selm".

Handwritten musical notation on a five-line staff. The key signature is one sharp (F#) and the time signature is 3/4. The melody is written in a treble clef. The lyrics are: "Stom FA".

Handwritten musical notation on a five-line staff. The key signature is one sharp (F#) and the time signature is 3/4. The melody is written in a treble clef. The lyrics are: "Do zem".

Handwritten musical notation on a five-line staff. The key signature is one sharp (F#) and the time signature is 3/4. The melody is written in a treble clef. The lyrics are: "zem zem".

Handwritten musical notation on a five-line staff. The key signature is one sharp (F#) and the time signature is 3/4. The melody is written in a treble clef. The lyrics are: "zem".

