

Z

$\frac{2}{4}$ Andante $\text{♩} = 60$

Fl 8^{va}

Ob 6^{va}

Clar 8^{va}
Sop

Fag 7^{va}

Coro 8^{va}

$\frac{2}{4}$

Timpa $\frac{2}{4}$

F

CONTRA 8^{va}
LTA
Sop

F

Son fpo d'adesso in fa nno de pax dei vob fce in fce ad me

X.A. FORTI SIMILATA MATA DE KA FA MES XES RI ZANTON A

Corno 8^{va}

$\frac{2}{4}$

GIORGIO
Corno 8^{va}

Ff

$\frac{2}{4}$

$\frac{2}{4}$ Andante $\text{♩} = 60$

Vcllo 8^{va}

Vcllo 8^{va}

Alto 8^{va}

$\frac{2}{4}$ F

Vcllo 7^{va}

Clarin 7^{va}

$\frac{2}{4}$ F

Allegro 1 = 96

R 6³/₈
 B 6³/₈
 A 6³/₈
 F₁ 7⁴/₈

Corn 6³/₈

Trp 7⁴/₈

Chorus
 Tenor
 Soprano
 Bass

Ep. on ye - now men
 En - Bi - ble - can - read

Coro 6³/₈

Guitar

Sempre f a melo marcando
 Allegro 1 = 96

Viol I 6³/₈

Viol II 6³/₈

Alto 6³/₈

Vc 7⁴/₈

Cbass 7⁴/₈

dolce

mf

ppizz

ppizz

ppizz

ppizz

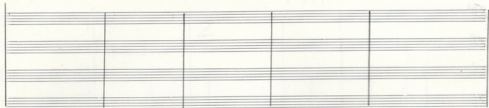
P

P

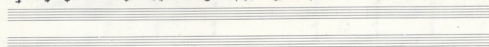
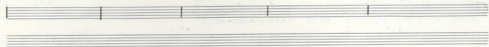
P

P

10



Sop. - - You - thy - self - con - ce - ptions - are - as - a - vapor
 Bar. - - Ge - nesis - 1:2 - YES - SA - FOR - WA - PS - DI - - - - -



Fl $B^{\flat} 3/4$

B B

d B

Fg 7

Clarinet B

Timp 7

Contra $B^{\flat} 3/4$

Tr. $Xu. fa. ve. ki. k. ve. Ba. ris$

Tn. $Hi. Ma. ye. ke. ka. ne. vor. tis$

Cello B

do

Contra $B^{\flat} 3/4$

Viola I $B^{\flat} 3/4$

Viola II $B^{\flat} 3/4$

Alc $B^{\flat} 3/4$

Vc $B^{\flat} 3/4$

Ob $B^{\flat} 3/4$

Musical staff with notes and dynamics. The staff contains a series of notes with a dynamic marking of *mf* and a slur over the notes.

Musical staff with notes and dynamics. The staff contains a series of notes with a dynamic marking of *mf* and a slur over the notes.

Musical staff with notes and dynamics. The staff contains a series of notes with a dynamic marking of *mf* and a slur over the notes.

Musical staff with notes and dynamics. The staff contains a series of notes with a dynamic marking of *mf* and a slur over the notes.

Musical staff with notes and dynamics. The staff contains a series of notes with a dynamic marking of *mf* and a slur over the notes.

Musical staff with notes and dynamics. The staff contains a series of notes with a dynamic marking of *mf* and a slur over the notes.

Musical staff with notes and dynamics. The staff contains a series of notes with a dynamic marking of *mf* and a slur over the notes.

6

R $\text{B}^{\flat} \text{E}^{\flat}$ 4/4

B B

A B

Fg Z

Arno B

Tap Z

Contr $\text{B}^{\flat} \text{E}^{\flat}$ 4/4

Am- Toul ke- Ho- fia- H- SKE- ve f- STAN

LA- T- K- ME- MA- MOU- SKE- P- A- STAN

3

Guitare $\text{B}^{\flat} \text{E}^{\flat}$ 4/4

Viol. I $\text{B}^{\flat} \text{E}^{\flat}$ 4/4

Viol. II $\text{B}^{\flat} \text{E}^{\flat}$ 4/4

Alc $\text{B}^{\flat} \text{E}^{\flat}$ 4/4

Vc $\text{B}^{\flat} \text{E}^{\flat}$ 4/4

Cb $\text{B}^{\flat} \text{E}^{\flat}$ 4/4

Handwritten musical notation for the first system, featuring a treble clef and a series of notes with stems and beams, some marked with accents.

Two empty staves for the second system.

Handwritten musical notation for the third system, featuring a treble clef and a series of notes with stems and beams, some marked with accents.

Handwritten musical notation for the fourth system, featuring a treble clef and a series of notes with stems and beams, some marked with accents.

ai - - kai - ta hui kai - he - h - tau tau
 E - - ka - ta ka - ka - he - e - tau - tau

Two empty staves for the fifth system.

Handwritten musical notation for the sixth system, featuring a treble clef and a series of notes with stems and beams, some marked with accents.

Handwritten musical notation for the seventh system, featuring a treble clef and a series of notes with stems and beams, some marked with accents.

Fl B^{\sharp} $\frac{3}{4}$

Cl B^{\sharp}

Fg $\frac{3}{4}$

Corm B^{\sharp}

Timp $\frac{3}{4}$

Corm B^{\sharp}

Corm B^{\sharp}

Corno B^{\sharp}

E- fa mi. sev. Ep. na. me na. yev te
 E. xi. RE. DEW. EN. BO. die PIA NAM. DE

Corno B^{\sharp}

Viol I B^{\sharp}

Viol II B^{\sharp}

Alc B^{\sharp}

Vc B^{\sharp}

Cb B^{\sharp}

Handwritten musical score for the first system. The top staff shows a vocal line with a long note on a high pitch, followed by a melodic line. The piano accompaniment consists of a single melodic line with eighth notes.

Handwritten musical score for the second system. The vocal line continues with a melodic line. The piano accompaniment continues with eighth notes.

Handwritten musical score for the third system. The vocal line includes lyrics: "AX-AV-TA-vi TO-EI-Kay" and "AN-AN-TA-NI TO-EB KAN-". The piano accompaniment includes performance markings: *F* (forte) and *P* (piano). A handwritten note "(Haupt-Artikel)" is written below the piano part.

Handwritten musical score for the fourth system. The piano accompaniment features a rhythmic pattern of eighth notes with a steady bass line.

Handwritten musical score for the fifth system. This system includes multiple staves for piano accompaniment. The top two staves are labeled "Viol II" and "Alc" (Alto). The bottom two staves are labeled "Alc" and "Alc". The piano part includes performance markings: *Alc* and *Alc*.

Fl &
 Ob B^{\flat}
 Cl B^{\flat}
 Fg F

Coro &
 Timpani C

Coro B^{\flat}
 Cello C

Coro: *ve-je po ne la ne - la-ve-ve-ve-ve*
 Cello: *FOR-CA-RO ME LA NE LA-M-PO-RO*

50

Corona B^{\flat}

Vcl I B^{\flat}
 Vcl II B^{\flat}
 Vcl III B^{\flat}
 Vcl IV B^{\flat}
 Vcl V B^{\flat}
 Vcl VI B^{\flat}
 Vcl VII B^{\flat}

Handwritten musical score system 1, featuring a treble clef and a dynamic marking of *mf*. The notation includes a series of eighth notes with accents and slurs, and a corresponding bass line with eighth notes.

Empty musical staff.

Empty musical staff.

Musical staff with notes, including a half note and a quarter note with an accent.

Empty musical staff.

Musical staff with notes, including a half note and a quarter note with an accent.

Handwritten musical score system 2, featuring a treble clef and lyrics in two lines. The lyrics are: *Kwampu ya- pa- ya- pa- pa- je pau Ax. Av. re:* and *KAM-DEA-GA- RA- GA- RA- FA LE APO- AN- AN-TA-*

Musical staff with notes, including a half note and a quarter note with an accent.

Empty musical staff.

Empty musical staff.

Musical staff with notes, including a half note and a quarter note with an accent.

Empty musical staff.

Empty musical staff.

Empty musical staff.

Musical staff with notes, including a half note and a quarter note with an accent.

Musical staff with notes, including a half note and a quarter note with an accent.

Musical staff with notes, including a half note and a quarter note with an accent.

Musical staff with notes, including a half note and a quarter note with an accent.

Musical staff with notes, including a half note and a quarter note with an accent.

Musical staff with notes, including a half note and a quarter note with an accent.

Musical staff with notes, including a half note and a quarter note with an accent.

Musical staff with notes, including a half note and a quarter note with an accent.

8000 - - - - -

IR $B^{\sharp} 4/4$

OB $B^{\sharp} 4/4$

CL $B^{\sharp} 4/4$

Fg $B^{\sharp} 4/4$

mf

mf

Coro I $B^{\sharp} 4/4$

Temp $B^{\sharp} 4/4$

Coro R $B^{\sharp} 4/4$

VA. Ten. Ka. - - - - - ma. ca. a. - - - - -

VI. - - - - - BEL. - - - - - KAH. - - - - - So. - - - - - Ri. - - - - - o. - - - - -

PA XI - - - - - RES. - - - - - ANA - - - - - VA. - - - - -

7/8

mf

Coro $B^{\sharp} 4/4$

6

Coro R $B^{\sharp} 4/4$

Viol I $B^{\sharp} 4/4$

Viol II $B^{\sharp} 4/4$

Alc $B^{\sharp} 4/4$

Vc $B^{\sharp} 4/4$

Ob $B^{\sharp} 4/4$

mf

Handwritten musical score for the first system, consisting of five staves. The notation includes various rhythmic values and melodic lines. A large slur covers the first two staves across the first two measures.

Empty musical staff.

Empty musical staff.

Empty musical staff.

Handwritten musical score for the second system, consisting of five staves. The notation includes various rhythmic values and melodic lines. A large slur covers the first two staves across the first two measures.

Empty musical staff.

Empty musical staff.

Empty musical staff.

Handwritten musical score for the third system, consisting of five staves. The notation includes various rhythmic values and melodic lines. A large slur covers the first two staves across the first two measures.

Empty musical staff.

Empty musical staff.

Empty musical staff.

Empty musical staff.

Soprano	Alto	Tenore	Baritone	Basso	Violino	Viola	Violoncello	Contrabbasso
SA	AL	TEN	BASS	VC	VLA	VCL	CB	

f

Fl. G^{major} 4/4 f

Ob. G^{major} 4/4 f

Cl. G^{major} 4/4

Fag. G^{major} 4/4

Cornet G^{major}

Temp. 4/4

CONTR. G^{major}

f

mf
GIA. Ti. To. RA. TNA. SE FAIR TO KR. o

mf
Ti. To. RA. TNA. SE FAIR TO KR. o

Cello G^{major}

Violoncello G^{major}

f

Viol. I G^{major}

Viol. II G^{major}

Viola G^{major}

Vc. G^{major}

Contra Bass G^{major}

Handwritten musical score for the first system, consisting of four staves. The top two staves appear to be vocal lines with lyrics, and the bottom two are piano accompaniment. The music is in a key with one flat and a common time signature.

Two empty musical staves.

Handwritten musical score for the second system, including lyrics and piano accompaniment.

Ti Tu-er Ca ne Ca
 Tu-er CA THA- PE- THA- PE- THA- = VE- RI- TI-
 PE- THA- = NI- S- PIA

Handwritten musical score for the third system, featuring a dense piano accompaniment with many chords.

Handwritten musical score for the fourth system, including lyrics and piano accompaniment.

dn
 unis

Andante

Andante 12 G

R Flute 1
 Flute 2
 Clarinet
 Bassoon

Trumpet

Violin I
 Violin II

*Sono in pace se tornata ho
 Spero a chi mi ha putata ho*

*Te, fido, se
 Da te ho
 Ho te ho*

Viola

Andante 12 G

Violoncello

Violin I

Violin II

Viola

Violoncello

Contrabasso

Allegro ♩ = 96

mf *lento*

Corno

Timp

Solo

Cello

(Antiph. upwards - downwards figures)

1. 2. 3.

mf

Tutti *passato* *rit.* *meno*
Tutti *meno* *rit.* *meno*

p

Allegro ♩ = 96

90

Corno

mf

Allegro ♩ = 96

mf
mf
mf
mf
mf
mf
mf

TR $8^{\flat} \frac{1}{2}$

OB $8^{\flat} \frac{1}{2}$

CL $8^{\flat} \frac{1}{2}$

Fg $7^{\flat} \frac{1}{2}$

Cor $8^{\flat} \frac{1}{2}$

Timp

Contr $8^{\flat} \frac{1}{2}$

tr. - - - - - m. - - - - - *son. - - - - - A. - - - - -* *ali. - - - - - - - - - - -* *tr. - - - - - Po - - - - -* *TA*

Cello

Contraba

Vcl

Vcl

Vla

Vc *for* *tr.*

Cb

Handwritten musical score for the first system, featuring a vocal line and a piano accompaniment line. The vocal line begins with a treble clef and a key signature of one flat. The piano accompaniment is in the bass clef. The music consists of four measures with various rhythmic values and accidentals.

Handwritten musical score for the second system, showing a vocal line and a piano accompaniment line. The vocal line continues with a treble clef and a key signature of one flat. The piano accompaniment is in the bass clef. The music consists of four measures with various rhythmic values and accidentals.

Handwritten musical score for the third system, including a vocal line with lyrics and a piano accompaniment line. The vocal line is in the treble clef with a key signature of one flat. The piano accompaniment is in the bass clef. The music consists of four measures with various rhythmic values and accidentals.

Lyrics: *maux ven par ce que ke - - - - -*
Pris NA. Ge. de. - - - - - FA. - - - - -

Handwritten musical score for the fourth system, featuring a complex piano accompaniment with many notes. The music is in the bass clef and consists of four measures with various rhythmic values and accidentals. A circled number '100' is written above the staff.

Handwritten musical score for the fifth system, showing a vocal line and a piano accompaniment line. The vocal line is in the treble clef with a key signature of one flat. The piano accompaniment is in the bass clef. The music consists of four measures with various rhythmic values and accidentals.

Lyrics: *du* *mais*

gr.....

TR 8^{th} 8^{th} 8^{th}

OB 8^{th}

CL 8^{th}

FP 7^{th}

CORNS 8^{th} 8^{th} 8^{th}

TIMP 7^{th}

CONTR. 8^{th}

KE TA SQU HE VA XII - - - - -
HE TA SQU GUE KE HE

NEW TO TE
KE TO TE

CORNO 8^{th}

CONTRAB. 8^{th}

Vcl I 8^{th} 8^{th}

Vcl II 8^{th} 8^{th}

ALC 8^{th} 8^{th}

VC 8^{th} 8^{th} *du unj*

CB 8^{th}

110 110 110 110 110 110 110 110
 110 110 110 110 110 110 110 110
 110 110 110 110 110 110 110 110
 110 110 110 110 110 110 110 110

Viol II

Viol I

Ma

gr...

Fl $\text{G}\sharp\text{F}$ 3 4 3 2 1 | 9 | $>$ 4 3 2 1 | 3^{2} | 1 | 1 | 1 |

Ob $\text{G}\sharp\text{F}$ 4 3 2 1 | 9 | $>$ 4 3 2 1 | 3^{2} | 1 | 3^{2} | 1 |

Ce $\text{G}\sharp\text{F}$ 4 3 2 1 | 9 | $>$ 4 3 2 1 | 3^{2} | 1 | 3^{2} | 1 |

Fg $\text{F}\sharp\text{E}$ 4 3 2 1 | 9 | $>$ 4 3 2 1 | 3^{2} | 1 | 3^{2} | 1 |

Coro $\text{G}\sharp\text{F}$ 4 3 2 1 | 9 | $>$ 4 3 2 1 | 3^{2} | 1 | 3^{2} | 1 |

TRP 7 7 5 4 | 3 2 1 | 3 2 1 | 3 2 1 | 3 2 1 |

CONTR $\text{G}\sharp\text{F}$ 4 3 2 1 | 9 | $>$ 4 3 2 1 | 3^{2} | 1 | 3^{2} | 1 |

Or - - pa - - ver
ou - - RA - - nus
König der - - him - - mel
König - - der - - Welt
Herr - - Gott
Gott

Claro $\text{G}\sharp\text{F}$ 4 3 2 1 | 9 | $>$ 4 3 2 1 | 3^{2} | 1 | 3^{2} | 1 |

Violine $\text{G}\sharp\text{F}$ 4 3 2 1 | 9 | $>$ 4 3 2 1 | 3^{2} | 1 | 3^{2} | 1 |

Vcllo $\text{G}\sharp\text{F}$ 4 3 2 1 | 9 | $>$ 4 3 2 1 | 3^{2} | 1 | 3^{2} | 1 |

Vcllo $\text{G}\sharp\text{F}$ 4 3 2 1 | 9 | $>$ 4 3 2 1 | 3^{2} | 1 | 3^{2} | 1 |

Alt $\text{G}\sharp\text{F}$ 4 3 2 1 | 9 | $>$ 4 3 2 1 | 3^{2} | 1 | 3^{2} | 1 |

Vc $\text{F}\sharp\text{E}$ 4 3 2 1 | 9 | $>$ 4 3 2 1 | 3^{2} | 1 | 3^{2} | 1 |

Cb $\text{F}\sharp\text{E}$ 4 3 2 1 | 9 | $>$ 4 3 2 1 | 3^{2} | 1 | 3^{2} | 1 |

23

d	> r r r	r	f	#f	b f	f
fis	fp sf. na-	r-ur	va-	ye	ka-	ra-
fos	la. rre ko	ra-	na-	pe	ka-	ra-

24

FL $\text{E}^{\flat} \text{F}$ G^{\flat} A^{\flat} B^{\flat} C D

B E^{\flat} F G^{\flat} A^{\flat} B^{\flat} C D

O E^{\flat} F G^{\flat} A^{\flat} B^{\flat} C D

Fg E^{\flat} F G^{\flat} A^{\flat} B^{\flat} C D

dim

Coro E^{\flat} F G^{\flat} A^{\flat} B^{\flat} C D

dim

Tim E^{\flat} F G^{\flat} A^{\flat} B^{\flat} C D

dim

Corno E^{\flat} F G^{\flat} A^{\flat} B^{\flat} C D

dim

Coro E^{\flat} F G^{\flat} A^{\flat} B^{\flat} C D

Camac E^{\flat} F G^{\flat} A^{\flat} B^{\flat} C D

dim

Cantabile

VI I E^{\flat} F G^{\flat} A^{\flat} B^{\flat} C D

dim

VI I E^{\flat} F G^{\flat} A^{\flat} B^{\flat} C D

ALC E^{\flat} F G^{\flat} A^{\flat} B^{\flat} C D

VC E^{\flat} F G^{\flat} A^{\flat} B^{\flat} C D

CB E^{\flat} F G^{\flat} A^{\flat} B^{\flat} C D

dim

p *dim*