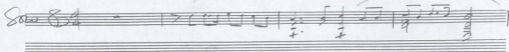
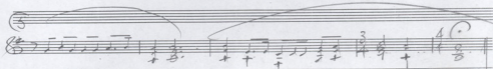


## PALMISTIA-KISAPPA N° 5

Lento  $\text{♩} = 58$ 

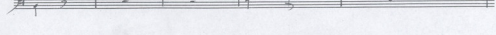
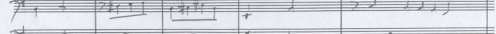
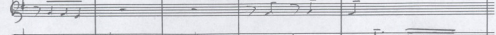
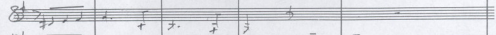
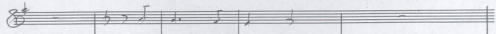
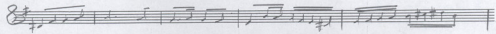
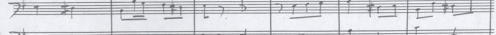
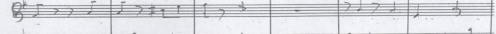
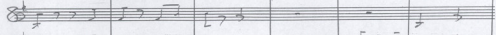
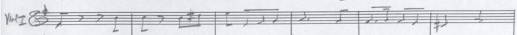
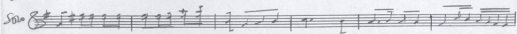
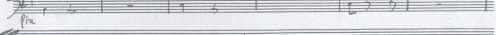
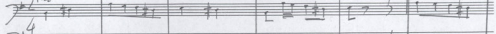
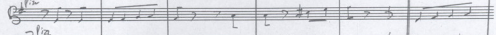
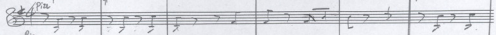
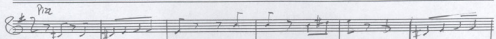
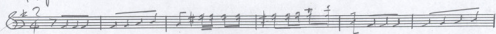
Vcllo I $\text{♩} = 58$ F $\text{♩} = 58$	$\text{♩} = 58$ sfpp	$\text{♩} = 58$	$\text{♩} = 58$
Vcllo II $\text{♩} = 58$ F $\text{♩} = 58$	$\text{♩} = 58$ sfpp	$\text{♩} = 58$	$\text{♩} = 58$
Alto $\text{♩} = 58$ F $\text{♩} = 58$	$\text{♩} = 58$ sfpp	$\text{♩} = 58$	$\text{♩} = 58$
Viola $\text{♩} = 58$ F $\text{♩} = 58$	$\text{♩} = 58$ sfpp	$\text{♩} = 58$	$\text{♩} = 58$
Cello $\text{♩} = 58$ F $\text{♩} = 58$	$\text{♩} = 58$ sfpp	$\text{♩} = 58$	$\text{♩} = 58$
Contra $\text{♩} = 58$ F $\text{♩} = 58$	$\text{♩} = 58$ sfpp	$\text{♩} = 58$	$\text{♩} = 58$

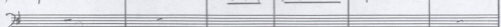
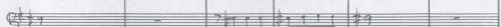
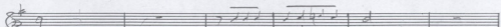
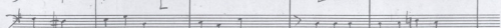
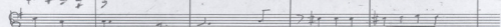
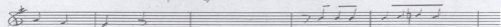
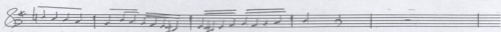
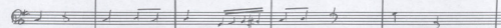
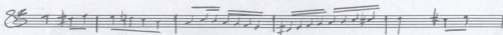


$\text{♩} = 58$				3	4
$\text{♩} = 58$				4	4
$\text{♩} = 58$				4	4
$\text{♩} = 58$				3	4
$\text{♩} = 58$				4	4

4/4 tempo  $\text{♩} = 100$

29





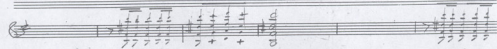
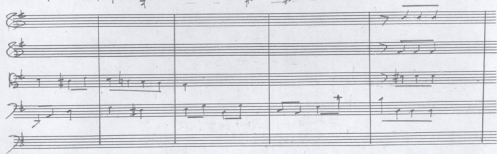
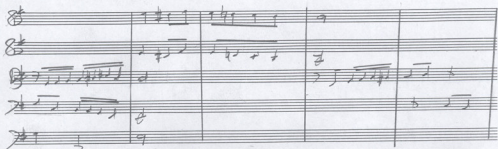
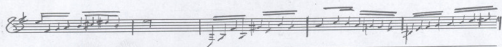
Handwritten musical notation on a single staff, starting with a treble clef and a key signature of one sharp (F#). The notation includes a series of eighth and sixteenth notes, some with beams, and rests.

Handwritten musical notation on five staves. The top staff is in treble clef with a key signature of one sharp. The lower four staves are in bass clef. The notation includes various rhythmic patterns, including eighth and sixteenth notes, and rests.

Handwritten musical notation on five staves. The top staff is in treble clef with a key signature of one sharp. The lower four staves are in bass clef. The notation includes various rhythmic patterns, including eighth and sixteenth notes, and rests.

Handwritten musical notation on five staves. The top staff is in treble clef with a key signature of one sharp. The lower four staves are in bass clef. The notation includes various rhythmic patterns, including eighth and sixteenth notes, and rests.

5



Handwritten musical notation on a single staff, featuring a treble clef, a key signature of one sharp (F#), and a 4/4 time signature. The notation includes a series of chords in the first measure, followed by a melodic line with eighth and sixteenth notes in the subsequent measures.

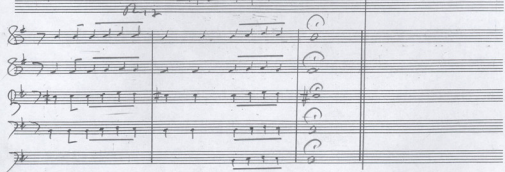
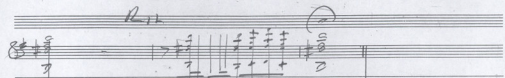
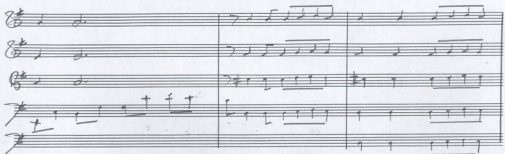
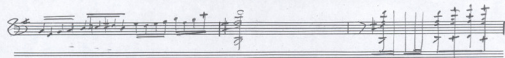
A system of five staves of handwritten musical notation. The top staff is in treble clef with a key signature of one sharp. The lower four staves are in bass clef. The notation includes various rhythmic patterns, including eighth and sixteenth notes, and rests.

A system of six staves of handwritten musical notation. The top staff is in treble clef with a key signature of one sharp. The bottom two staves are in bass clef. The notation includes complex rhythmic patterns with many beamed notes and rests.

A single staff of handwritten musical notation in treble clef with a key signature of one sharp. It features a melodic line with eighth and sixteenth notes, ending with a double bar line.

A system of five staves of handwritten musical notation. The top two staves are in treble clef with a key signature of one sharp. The bottom three staves are in bass clef. The notation includes various rhythmic patterns and rests.

7



A page of 20 blank musical staves, arranged vertically. Each staff consists of five horizontal lines. The paper is off-white and shows signs of age, including some staining and a small tear at the top left. The staves are evenly spaced and occupy most of the page's width.