

Александр II

Экз. № 2

Handwritten text, possibly a signature or name, appearing as a faint, mirrored bleed-through from the reverse side of the page.

Handwritten text, possibly a signature or name, appearing as a faint, mirrored bleed-through from the reverse side of the page.

АРКАДА II

Астана 4 тамеу 2002
XIV/1/2!

ТРА ПОТАРИ

Handwritten musical score for "ТРА ПОТАРИ". The score is written on multiple staves, including vocal lines and piano accompaniment. The key signature is one flat (B-flat), and the time signature is 8/8. The lyrics "ла са FA са ла До ла" are written above the first vocal line.

The score is divided into sections labeled A, BCD 1, BCD 2, and BCD 3. Section A is marked with a double slash (//). Section BCD 1 includes a circled correction in the vocal line. Section BCD 2 and BCD 3 show more complex piano accompaniment with various rhythmic patterns and dynamics.

The notation includes treble and bass clefs, notes, rests, and various musical symbols such as slurs, ties, and dynamic markings. The piano part features a mix of chords and melodic lines, often with slurs and ties.

BCD 4

2

Handwritten musical notation for system 1, measures 1-2. The first staff has a treble clef and a key signature of one flat. The second staff has a bass clef. The first measure contains a whole note chord. The second measure contains a complex rhythmic pattern with many beamed notes.

ABC 1

Handwritten musical notation for system 2, measures 3-4. The first staff has a treble clef and a key signature of one flat. The second staff has a bass clef. The first measure contains a complex rhythmic pattern with many beamed notes. The second measure contains a complex rhythmic pattern with many beamed notes.

ABC 2

Handwritten musical notation for system 3, measures 5-6. The first staff has a treble clef and a key signature of one flat. The second staff has a bass clef. The first measure contains a complex rhythmic pattern with many beamed notes. The second measure contains a complex rhythmic pattern with many beamed notes.

Al-ja-ri's-ya wa-nin-va-po

Handwritten musical notation for system 4, measures 7-8. The first staff has a treble clef and a key signature of one flat. The second staff has a bass clef. The first measure contains a whole note chord. The second measure contains a whole note chord.

Al-ja-ri's-ya wa-nin-va-po

Handwritten musical notation for system 5, measures 9-10. The first staff has a treble clef and a key signature of one flat. The second staff has a bass clef. The first measure contains a whole note chord. The second measure contains a whole note chord.

A

Handwritten musical notation for the first system. It consists of three staves. The top staff is a vocal line with lyrics: "TPI a p w ein na na na". The middle staff is a piano accompaniment with chords and some melodic lines. The bottom staff is another piano accompaniment with chords and some melodic lines. There are some markings like "A 9" at the end of the system.

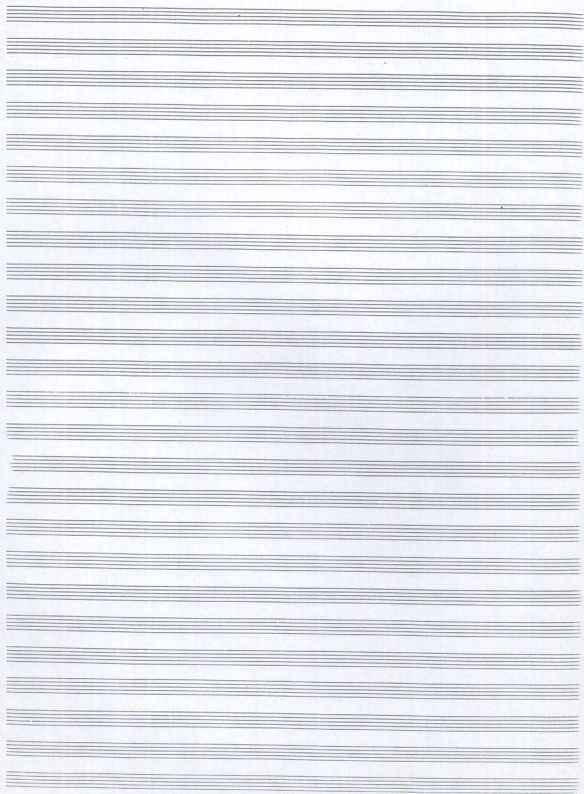
Handwritten musical notation for the second system. It consists of two staves. The top staff is a vocal line with lyrics: "Km TPI a na Ar ca - na". The bottom staff is a piano accompaniment with chords and some melodic lines.

Handwritten musical notation for the third system. It consists of two staves. The top staff is a piano accompaniment with chords and some melodic lines. The bottom staff is another piano accompaniment with chords and some melodic lines. There is a marking "A" with a slash through it in the middle of the system.

Handwritten musical notation for the fourth system. It consists of two staves. The top staff is a piano accompaniment with chords and some melodic lines. The bottom staff is another piano accompaniment with chords and some melodic lines. There are markings "ABC 1" and "ABC 2" in the middle of the system.

Handwritten musical notation for the fifth system. It consists of three staves. The top staff is a piano accompaniment with chords and some melodic lines. The middle staff is another piano accompaniment with chords and some melodic lines. The bottom staff is a piano accompaniment with chords and some melodic lines. There are markings "BCD 1", "2", and "3" in the middle of the system.

Handwritten musical notation for the sixth system. It consists of three staves. The top staff is a piano accompaniment with chords and some melodic lines. The middle staff is another piano accompaniment with chords and some melodic lines. The bottom staff is a piano accompaniment with chords and some melodic lines. There are markings "4", "ABC 1", and "ABC 2" in the middle of the system.



Handwritten musical notation for the first system. It consists of two staves: a treble clef staff on top and a bass clef staff on the bottom. The treble staff contains a series of notes, including a circled 'A' in the first measure. The bass staff contains notes and rests. There are some annotations like '+' and 'x' above the notes.

Handwritten musical notation for the second system. It consists of two staves: a treble clef staff on top and a bass clef staff on the bottom. The treble staff contains notes and rests, with a circled 'A' in the first measure. The bass staff contains notes and rests. There are some annotations like '+' and 'x' above the notes.

Handwritten musical notation for the third system. It consists of two staves: a treble clef staff on top and a bass clef staff on the bottom. The treble staff contains notes and rests. The bass staff contains notes and rests. There are some annotations like '+' and 'x' above the notes.

Handwritten musical notation for the fourth system. It consists of two staves: a treble clef staff on top and a bass clef staff on the bottom. The treble staff contains notes and rests, with two circled 'A's in the second and third measures. The bass staff contains notes and rests. There are some annotations like '+' and 'x' above the notes.

Handwritten musical notation for the fifth system. It consists of two staves: a treble clef staff on top and a bass clef staff on the bottom. The treble staff contains notes and rests. The bass staff contains notes and rests, and is circled in the lower part of the system. There are some annotations like '+' and 'x' above the notes.

Handwritten musical notation on a grand staff (treble, alto, and bass clefs). The notation includes notes, rests, and bar lines. A large 'X' is drawn over this system.

Handwritten musical notation on a grand staff. The notation includes notes, rests, and bar lines. A large 'X' is drawn over this system.

Handwritten musical notation on a grand staff. The notation includes notes, rests, and bar lines. A large 'X' is drawn over this system.

Handwritten musical notation on a grand staff. The notation includes notes, rests, and bar lines.

Handwritten musical notation on a grand staff. The notation includes notes, rests, and bar lines.

Empty musical staves at the bottom of the page.

Handwritten musical notation for the first system. It consists of three staves. The top staff is a treble clef with a key signature of one flat (Bb) and a common time signature (C). The middle and bottom staves are bass clefs with the same key signature and time signature. The notation includes various note values, rests, and some markings that appear to be fingerings or articulation marks.

Handwritten musical notation for the second system. It consists of three staves. The top staff is a treble clef with a key signature of one flat (Bb) and a common time signature (C). The middle and bottom staves are bass clefs with the same key signature and time signature. The notation includes various note values, rests, and some markings that appear to be fingerings or articulation marks.

Handwritten musical notation for the third system. It consists of three staves. The top staff is a treble clef with a key signature of one flat (Bb) and a common time signature (C). The middle and bottom staves are bass clefs with the same key signature and time signature. The notation includes various note values, rests, and some markings that appear to be fingerings or articulation marks.

Handwritten musical notation for the fourth system. It consists of three staves. The top staff is a treble clef with a key signature of one flat (Bb) and a common time signature (C). The middle and bottom staves are bass clefs with the same key signature and time signature. The notation includes various note values, rests, and some markings that appear to be fingerings or articulation marks.

Handwritten musical notation on a single staff, featuring a treble clef, a key signature of one sharp (F#), and a 2/4 time signature. The notation includes a quarter rest, followed by a quarter note G4, an eighth note A4, and a quarter note B4. A slur covers the eighth note A4 and the quarter note B4. The staff ends with a double bar line.

Handwritten musical notation on a single staff, featuring a bass clef, a key signature of one sharp (F#), and a 2/4 time signature. The notation consists of a series of eighth notes: G3, A3, B3, C4, D4, E4, F#4, G4, A4, B4, C5, D5, E5, F#5, G5, A5, B5, C6, D6, E6, F#6, G6, A6, B6, C7, D7, E7, F#7, G7, A7, B7, C8, D8, E8, F#8, G8, A8, B8, C9, D9, E9, F#9, G9, A9, B9, C10, D10, E10, F#10, G10, A10, B10, C11, D11, E11, F#11, G11, A11, B11, C12, D12, E12, F#12, G12, A12, B12, C13, D13, E13, F#13, G13, A13, B13, C14, D14, E14, F#14, G14, A14, B14, C15, D15, E15, F#15, G15, A15, B15, C16, D16, E16, F#16, G16, A16, B16, C17, D17, E17, F#17, G17, A17, B17, C18, D18, E18, F#18, G18, A18, B18, C19, D19, E19, F#19, G19, A19, B19, C20, D20, E20, F#20, G20, A20, B20, C21, D21, E21, F#21, G21, A21, B21, C22, D22, E22, F#22, G22, A22, B22, C23, D23, E23, F#23, G23, A23, B23, C24, D24, E24, F#24, G24, A24, B24, C25, D25, E25, F#25, G25, A25, B25, C26, D26, E26, F#26, G26, A26, B26, C27, D27, E27, F#27, G27, A27, B27, C28, D28, E28, F#28, G28, A28, B28, C29, D29, E29, F#29, G29, A29, B29, C30, D30, E30, F#30, G30, A30, B30, C31, D31, E31, F#31, G31, A31, B31, C32, D32, E32, F#32, G32, A32, B32, C33, D33, E33, F#33, G33, A33, B33, C34, D34, E34, F#34, G34, A34, B34, C35, D35, E35, F#35, G35, A35, B35, C36, D36, E36, F#36, G36, A36, B36, C37, D37, E37, F#37, G37, A37, B37, C38, D38, E38, F#38, G38, A38, B38, C39, D39, E39, F#39, G39, A39, B39, C40, D40, E40, F#40, G40, A40, B40, C41, D41, E41, F#41, G41, A41, B41, C42, D42, E42, F#42, G42, A42, B42, C43, D43, E43, F#43, G43, A43, B43, C44, D44, E44, F#44, G44, A44, B44, C45, D45, E45, F#45, G45, A45, B45, C46, D46, E46, F#46, G46, A46, B46, C47, D47, E47, F#47, G47, A47, B47, C48, D48, E48, F#48, G48, A48, B48, C49, D49, E49, F#49, G49, A49, B49, C50, D50, E50, F#50, G50, A50, B50, C51, D51, E51, F#51, G51, A51, B51, C52, D52, E52, F#52, G52, A52, B52, C53, D53, E53, F#53, G53, A53, B53, C54, D54, E54, F#54, G54, A54, B54, C55, D55, E55, F#55, G55, A55, B55, C56, D56, E56, F#56, G56, A56, B56, C57, D57, E57, F#57, G57, A57, B57, C58, D58, E58, F#58, G58, A58, B58, C59, D59, E59, F#59, G59, A59, B59, C60, D60, E60, F#60, G60, A60, B60, C61, D61, E61, F#61, G61, A61, B61, C62, D62, E62, F#62, G62, A62, B62, C63, D63, E63, F#63, G63, A63, B63, C64, D64, E64, F#64, G64, A64, B64, C65, D65, E65, F#65, G65, A65, B65, C66, D66, E66, F#66, G66, A66, B66, C67, D67, E67, F#67, G67, A67, B67, C68, D68, E68, F#68, G68, A68, B68, C69, D69, E69, F#69, G69, A69, B69, C70, D70, E70, F#70, G70, A70, B70, C71, D71, E71, F#71, G71, A71, B71, C72, D72, E72, F#72, G72, A72, B72, C73, D73, E73, F#73, G73, A73, B73, C74, D74, E74, F#74, G74, A74, B74, C75, D75, E75, F#75, G75, A75, B75, C76, D76, E76, F#76, G76, A76, B76, C77, D77, E77, F#77, G77, A77, B77, C78, D78, E78, F#78, G78, A78, B78, C79, D79, E79, F#79, G79, A79, B79, C80, D80, E80, F#80, G80, A80, B80, C81, D81, E81, F#81, G81, A81, B81, C82, D82, E82, F#82, G82, A82, B82, C83, D83, E83, F#83, G83, A83, B83, C84, D84, E84, F#84, G84, A84, B84, C85, D85, E85, F#85, G85, A85, B85, C86, D86, E86, F#86, G86, A86, B86, C87, D87, E87, F#87, G87, A87, B87, C88, D88, E88, F#88, G88, A88, B88, C89, D89, E89, F#89, G89, A89, B89, C90, D90, E90, F#90, G90, A90, B90, C91, D91, E91, F#91, G91, A91, B91, C92, D92, E92, F#92, G92, A92, B92, C93, D93, E93, F#93, G93, A93, B93, C94, D94, E94, F#94, G94, A94, B94, C95, D95, E95, F#95, G95, A95, B95, C96, D96, E96, F#96, G96, A96, B96, C97, D97, E97, F#97, G97, A97, B97, C98, D98, E98, F#98, G98, A98, B98, C99, D99, E99, F#99, G99, A99, B99, C100, D100, E100, F#100, G100, A100, B100, C101, D101, E101, F#101, G101, A101, B101, C102, D102, E102, F#102, G102, A102, B102, C103, D103, E103, F#103, G103, A103, B103, C104, D104, E104, F#104, G104, A104, B104, C105, D105, E105, F#105, G105, A105, B105, C106, D106, E106, F#106, G106, A106, B106, C107, D107, E107, F#107, G107, A107, B107, C108, D108, E108, F#108, G108, A108, B108, C109, D109, E109, F#109, G109, A109, B109, C110, D110, E110, F#110, G110, A110, B110, C111, D111, E111, F#111, G111, A111, B111, C112, D112, E112, F#112, G112, A112, B112, C113, D113, E113, F#113, G113, A113, B113, C114, D114, E114, F#114, G114, A114, B114, C115, D115, E115, F#115, G115, A115, B115, C116, D116, E116, F#116, G116, A116, B116, C117, D117, E117, F#117, G117, A117, B117, C118, D118, E118, F#118, G118, A118, B118, C119, D119, E119, F#119, G119, A119, B119, C120, D120, E120, F#120, G120, A120, B120, C121, D121, E121, F#121, G121, A121, B121, C122, D122, E122, F#122, G122, A122, B122, C123, D123, E123, F#123, G123, A123, B123, C124, D124, E124, F#124, G124, A124, B124, C125, D125, E125, F#125, G125, A125, B125, C126, D126, E126, F#126, G126, A126, B126, C127, D127, E127, F#127, G127, A127, B127, C128, D128, E128, F#128, G128, A128, B128, C129, D129, E129, F#129, G129, A129, B129, C130, D130, E130, F#130, G130, A130, B130, C131, D131, E131, F#131, G131, A131, B131, C132, D132, E132, F#132, G132, A132, B132, C133, D133, E133, F#133, G133, A133, B133, C134, D134, E134, F#134, G134, A134, B134, C135, D135, E135, F#135, G135, A135, B135, C136, D136, E136, F#136, G136, A136, B136, C137, D137, E137, F#137, G137, A137, B137, C138, D138, E138, F#138, G138, A138, B138, C139, D139, E139, F#139, G139, A139, B139, C140, D140, E140, F#140, G140, A140, B140, C141, D141, E141, F#141, G141, A141, B141, C142, D142, E142, F#142, G142, A142, B142, C143, D143, E143, F#143, G143, A143, B143, C144, D144, E144, F#144, G144, A144, B144, C145, D145, E145, F#145, G145, A145, B145, C146, D146, E146, F#146, G146, A146, B146, C147, D147, E147, F#147, G147, A147, B147, C148, D148, E148, F#148, G148, A148, B148, C149, D149, E149, F#149, G149, A149, B149, C150, D150, E150, F#150, G150, A150, B150, C151, D151, E151, F#151, G151, A151, B151, C152, D152, E152, F#152, G152, A152, B152, C153, D153, E153, F#153, G153, A153, B153, C154, D154, E154, F#154, G154, A154, B154, C155, D155, E155, F#155, G155, A155, B155, C156, D156, E156, F#156, G156, A156, B156, C157, D157, E157, F#157, G157, A157, B157, C158, D158, E158, F#158, G158, A158, B158, C159, D159, E159, F#159, G159, A159, B159, C160, D160, E160, F#160, G160, A160, B160, C161, D161, E161, F#161, G161, A161, B161, C162, D162, E162, F#162, G162, A162, B162, C163, D163, E163, F#163, G163, A163, B163, C164, D164, E164, F#164, G164, A164, B164, C165, D165, E165, F#165, G165, A165, B165, C166, D166, E166, F#166, G166, A166, B166, C167, D167, E167, F#167, G167, A167, B167, C168, D168, E168, F#168, G168, A168, B168, C169, D169, E169, F#169, G169, A169, B169, C170, D170, E170, F#170, G170, A170, B170, C171, D171, E171, F#171, G171, A171, B171, C172, D172, E172, F#172, G172, A172, B172, C173, D173, E173, F#173, G173, A173, B173, C174, D174, E174, F#174, G174, A174, B174, C175, D175, E175, F#175, G175, A175, B175, C176, D176, E176, F#176, G176, A176, B176, C177, D177, E177, F#177, G177, A177, B177, C178, D178, E178, F#178, G178, A178, B178, C179, D179, E179, F#179, G179, A179, B179, C180, D180, E180, F#180, G180, A180, B180, C181, D181, E181, F#181, G181, A181, B181, C182, D182, E182, F#182, G182, A182, B182, C183, D183, E183, F#183, G183, A183, B183, C184, D184, E184, F#184, G184, A184, B184, C185, D185, E185, F#185, G185, A185, B185, C186, D186, E186, F#186, G186, A186, B186, C187, D187, E187, F#187, G187, A187, B187, C188, D188, E188, F#188, G188, A188, B188, C189, D189, E189, F#189, G189, A189, B189, C190, D190, E190, F#190, G190, A190, B190, C191, D191, E191, F#191, G191, A191, B191, C192, D192, E192, F#192, G192, A192, B192, C193, D193, E193, F#193, G193, A193, B193, C194, D194, E194, F#194, G194, A194, B194, C195, D195, E195, F#195, G195, A195, B195, C196, D196, E196, F#196, G196, A196, B196, C197, D197, E197, F#197, G197, A197, B197, C198, D198, E198, F#198, G198, A198, B198, C199, D199, E199, F#199, G199, A199, B199, C200, D200, E200, F#200, G200, A200, B200, C201, D201, E201, F#201, G201, A201, B201, C202, D202, E202, F#202, G202, A202, B202, C203, D203, E203, F#203, G203, A203, B203, C204, D204, E204, F#204, G204, A204, B204, C205, D205, E205, F#205, G205, A205, B205, C206, D206, E206, F#206, G206, A206, B206, C207, D207, E207, F#207, G207, A207, B207, C208, D208, E208, F#208, G208, A208, B208, C209, D209, E209, F#209, G209, A209, B209, C210, D210, E210, F#210, G210, A210, B210, C211, D211, E211, F#211, G211, A211, B211, C212, D212, E212, F#212, G212, A212, B212, C213, D213, E213, F#213, G213, A213, B213, C214, D214, E214, F#214, G214, A214, B214, C215, D215, E215, F#215, G215, A215, B215, C216, D216, E216, F#216, G216, A216, B216, C217, D217, E217, F#217, G217, A217, B217, C218, D218, E218, F#218, G218, A218, B218, C219, D219, E219, F#219, G219, A219, B219, C220, D220, E220, F#220, G220, A220, B220, C221, D221, E221, F#221, G221, A221, B221, C222, D222, E222, F#222, G222, A222, B222, C223, D223, E223, F#223, G223, A223, B223, C224, D224, E224, F#224, G224, A224, B224, C225, D225, E225, F#225, G225, A225, B225, C226, D226, E226, F#226, G226, A226, B226, C227, D227, E227, F#227, G227, A227, B227, C228, D228, E228, F#228, G228, A228, B228, C229, D229, E229, F#229, G229, A229, B229, C230, D230, E230, F#230, G230, A230, B230, C231, D231, E231, F#231, G231, A231, B231, C232, D232, E232, F#232, G232, A232, B232, C233, D233, E233, F#233, G233, A233, B233, C234, D234, E234, F#234, G234, A234, B234, C235, D235, E235, F#235, G235, A235, B235, C236, D236, E236, F#236, G236, A236, B236, C237, D237, E237, F#237, G237, A237, B237, C238, D238, E238, F#238, G238, A238, B238, C239, D239, E239, F#239, G239, A239, B239, C240, D240, E240, F#240, G240, A240, B240, C241, D241, E241, F#241, G241, A241, B241, C242, D242, E242, F#242, G242, A242, B242, C243, D243, E243, F#243, G243, A243, B243, C244, D244, E244, F#244, G244, A244, B244, C245, D245, E245, F#245, G245, A245, B245, C246, D246, E246, F#246, G246, A246, B246, C247, D247, E247, F#247, G247, A247, B247, C248, D248, E248, F#248, G248, A248, B248, C249, D249, E249, F#249, G249, A249, B249, C250, D250, E250, F#250, G250, A250, B250, C251, D251, E251, F#251, G251, A251, B251, C252, D252, E252, F#252, G252, A252, B252, C253, D253, E253, F#253, G253, A253, B253, C254, D254, E254, F#254, G254, A254, B254, C255, D255, E255, F#255, G255, A255, B255, C256, D256, E256, F#256, G256, A256, B256, C257, D257, E257, F#257, G257, A257, B257, C258, D258, E258, F#258, G258, A258, B258, C259, D259, E259, F#259, G259, A259, B259, C260, D260, E260, F#260, G260, A260, B260, C261, D261, E261, F#261, G261, A261, B261, C262, D262, E262, F#262, G262, A262, B262, C263, D263, E263, F#263, G263, A263, B263, C264, D264, E264, F#264, G264, A264, B264, C265, D265, E265, F#265, G265, A265, B265, C266, D266, E266, F#266, G266, A266, B266, C267, D267, E267, F#267, G267, A267, B267, C268, D268, E268, F#268, G268, A268, B268, C269, D269, E269, F#269, G269, A269, B269, C270, D270, E270, F#270, G270, A270, B270, C271, D271, E271, F#271, G271, A271, B271, C272, D272, E272, F#272, G272, A272, B272, C273, D273, E273, F#273, G273, A273, B273, C274, D274, E274, F#274, G274, A274, B274, C275, D275, E275, F#275, G275, A275, B275, C276, D276, E276, F#276, G276, A276, B276, C277, D277, E277, F#277, G277, A277, B277, C278, D278, E278, F#278, G278, A278, B278, C279, D279, E279, F#279, G279, A279, B279, C280, D280, E280, F#280, G280, A280, B280, C281, D281, E281, F#281, G281, A281, B281, C282, D282, E282, F#282, G282, A282, B282, C283, D283, E283, F#283, G283, A283, B283, C284, D284, E284, F#284, G284, A284, B284, C285, D285, E285, F#285, G285, A285, B285, C286, D286, E286, F#286, G286, A286, B286, C287, D287, E287, F#287, G287, A287, B287, C288, D288, E288, F#288, G288, A288, B288, C289, D289, E289, F#289, G289, A289, B289, C290, D290, E290, F#290, G290, A290, B290, C291, D291, E291, F#291, G291, A291, B291, C292, D292, E292, F#292, G292, A292, B292, C293, D293, E293, F#293, G293, A293, B293, C294, D294, E294, F#294, G294, A294, B294, C295, D295, E295, F#295, G295, A295, B295, C296, D296, E296, F#296, G296, A296, B296, C297, D297, E297, F#297, G297, A297, B297, C298, D298, E298, F#298, G298, A298, B298, C299, D299, E299, F#299, G299, A299, B299, C300, D300, E300, F#300, G300, A300, B300, C301, D301, E301, F#301, G301, A301, B301, C302, D302, E302, F#302, G302, A302, B302, C303, D303, E303, F#303, G303, A303, B303, C304, D304, E304, F#304, G304, A304, B304, C305, D305, E305, F#305, G305, A305, B305, C306, D306, E306, F#306, G306, A306, B306, C307, D307, E307, F#307, G307, A307, B307, C308, D308, E308, F#308, G308, A308, B308, C309, D309, E309, F#309, G309, A309, B309, C310, D310, E310, F#310, G310, A310, B310, C311, D311, E311, F#311, G311, A311, B311, C312, D312, E312, F#312, G312, A312, B312, C313, D313, E313, F#313, G313, A313, B313, C314, D314, E314, F#314, G314, A314, B314, C315, D315, E315, F#315, G315, A315, B315, C316, D316, E316, F#316, G316, A316, B316, C317, D317, E317, F#317, G317, A317, B317, C318, D318, E318, F#318, G318, A318, B318, C319, D319, E319, F#319, G319, A319, B319, C320, D320, E320, F#320, G320, A320, B320, C321, D321, E321, F#321, G321, A321, B321, C322, D322, E322, F#322, G322, A322, B322, C323, D323, E323, F#323, G323, A323, B323, C324, D324, E324, F#324, G324, A324, B324, C325, D325, E325, F#325, G325, A325, B325, C326, D326, E326, F#326, G326, A326, B326, C327, D327, E327, F#327, G327, A327, B327, C328, D328, E328, F#328, G328, A328, B328, C329, D329, E329, F#329, G329, A329, B329, C330, D330, E330, F#330, G330, A330, B330, C331, D331, E331, F#331, G331, A331, B331, C332, D332, E332, F#332, G332, A332, B332, C333, D333, E333, F#333, G333, A333, B333, C334, D334, E334, F#334, G334, A334, B334, C335, D335, E335, F#335, G335, A335, B335, C336, D336, E336, F#336, G336, A336, B336, C337, D337, E337, F#337, G337, A337, B337, C338, D338, E338, F#338, G338, A338, B338, C339, D339, E339, F#339, G339, A339, B339, C340, D340, E340, F#340, G340, A340, B340, C341, D341, E341, F#341, G341, A341, B341, C342, D342, E342, F#342, G342, A342, B342, C343, D343, E343, F#343, G343, A343, B343, C344, D344, E344, F#344, G344, A344, B344, C345, D345, E345, F#345, G345, A345, B345, C346, D346, E346, F#346, G346, A346, B346, C347, D347, E347, F#347, G347, A347, B347, C348, D348, E348, F#348, G348, A348, B348, C349, D349, E349, F#349, G349, A349, B349, C350, D350, E350, F#350, G350, A350, B350, C351, D351, E351, F#351, G351, A351, B351, C352, D352, E352, F#352, G352, A352, B352, C353, D353, E353, F#353, G353, A353, B353, C354, D354, E354, F#354, G354, A354, B354, C355, D355, E355, F#355, G355, A355, B355, C356, D356, E356, F#356, G356, A356, B356, C357, D357, E357, F#357, G357, A357, B357, C358, D358, E358, F#358, G358, A358, B358, C359, D359, E359, F#359, G359, A359, B359, C360, D360, E360, F#360, G360, A360, B360, C361, D361, E361, F#361, G361, A361, B361, C362, D

Handwritten musical notation on a single staff, featuring a treble clef, a key signature of one flat, and a series of notes with stems.

Handwritten musical notation on two staves, including a treble clef, a key signature of one flat, and various musical symbols like accidentals and dynamics.

Handwritten musical notation on a single staff, featuring a treble clef, a key signature of one flat, and notes with stems.

Handwritten musical notation on two staves, including a treble clef, a key signature of one flat, and various musical symbols like accidentals and dynamics.

Handwritten musical notation on a single staff, featuring a treble clef, a key signature of one flat, and notes with stems.

Handwritten musical notation on two staves, including a treble clef, a key signature of one flat, and various musical symbols like accidentals and dynamics.

Handwritten musical notation on a single staff, featuring a treble clef, a key signature of one flat, and notes with stems.

Handwritten musical notation on a grand staff (treble and bass clefs). The notation includes notes, rests, and bar lines. A large diagonal slash is drawn across the entire page, passing through this section.

Handwritten musical notation on a grand staff, continuing from the first system. It features notes, rests, and bar lines. A large diagonal slash is drawn across the entire page, passing through this section.

A series of ten empty musical staves, each consisting of five horizontal lines, located at the bottom of the page.

1

Handwritten musical notation for the first system, featuring a treble clef, a key signature of one sharp (F#), and a 3/4 time signature. The system includes a vocal line with a melodic line and a piano accompaniment with chords and rhythmic patterns.

Handwritten musical notation for the second system, continuing the piece with similar notation and accompaniment.

Handwritten musical notation for the third system, showing further development of the melody and accompaniment.

Handwritten musical notation for the fourth system, including a variety of rhythmic values and chordal structures.

Handwritten musical notation for the fifth system, featuring a mix of eighth and sixteenth notes in the vocal line.

Handwritten musical notation for the sixth system, concluding the page with a final melodic phrase and accompaniment.

Handwritten musical notation for the first system, consisting of three staves (treble, alto, and bass clefs). The notation includes various note values, rests, and bar lines. A checkmark is visible above the second staff.

Handwritten musical notation for the second system, consisting of three staves (treble, alto, and bass clefs). The notation includes various note values, rests, and bar lines. A checkmark is visible above the second staff.

Handwritten musical notation for the third system, consisting of three staves (treble, alto, and bass clefs). The notation includes various note values, rests, and bar lines.

Handwritten musical notation for the fourth system, consisting of three staves (treble, alto, and bass clefs). The notation includes various note values, rests, and bar lines.

Handwritten musical notation for the fifth system, consisting of three staves (treble, alto, and bass clefs). The notation includes various note values, rests, and bar lines.

Handwritten musical notation for the sixth system, consisting of three staves (treble, alto, and bass clefs). The notation includes various note values, rests, and bar lines.

Four empty musical staves at the bottom of the page, consisting of two treble clef staves and two bass clef staves.

Handwritten musical score system 1. It consists of three staves: a treble clef staff with a key signature of one flat and a 3/4 time signature, and two bass clef staves. The music is written in ink with various notes, rests, and bar lines.

Handwritten musical score system 2. It consists of three staves. The top staff has a treble clef and a key signature of one flat. The middle and bottom staves have bass clefs. There are handwritten annotations including a circled 'B' and the letters 'An' written twice.

Handwritten musical score system 3. It consists of three staves. A prominent red scribble is present in the middle of the system, crossing over the staves. The notation includes various notes and rests.

Handwritten musical score system 4. It consists of three staves. The top staff has a treble clef and a key signature of one flat. There are handwritten annotations including 'Mib', 'sl', and 'Sib' above the notes.

Handwritten musical score system 5. It consists of three staves. The top staff has a treble clef and a key signature of one flat. There are handwritten annotations including 'sl' and 'Sib' above the notes.

Handwritten musical score system 6. It consists of three staves. The top staff has a treble clef and a key signature of one flat. The notation includes various notes, rests, and bar lines.

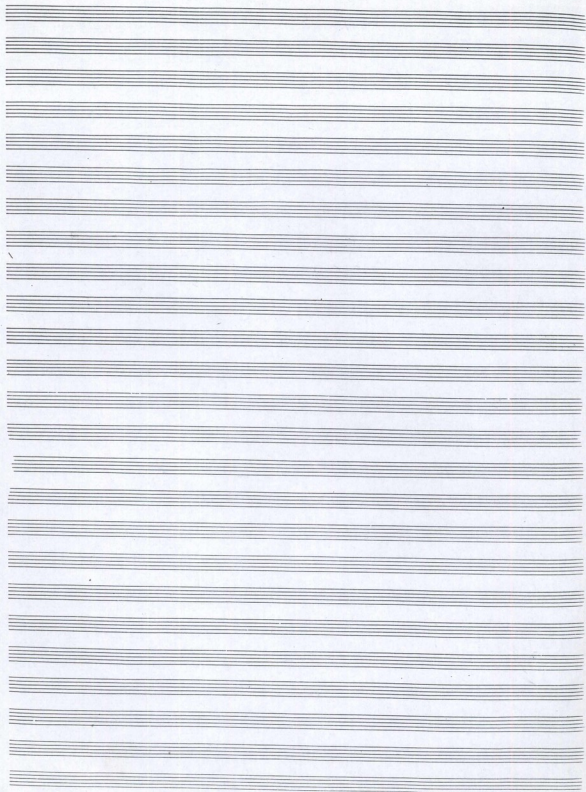
A A₁ A₂ A₃

smile

(B) →

3 parts

Handwritten musical score for three parts. The score is written on multiple staves, alternating between treble and bass clefs. The notation includes notes, rests, and bar lines. Annotations such as "Sb", "CAB", and "Mib" are present above the staves. A large diagonal line is drawn across the middle of the page, crossing through several staves. The score concludes with a double bar line and repeat dots.



Handwritten musical notation on a single staff, featuring a treble clef and a series of notes.

Handwritten musical notation on two staves, including a treble clef and a bass clef, with notes and rests.

Handwritten musical notation on a single staff, featuring a treble clef and notes.

Handwritten musical notation on two staves, including a treble clef and a bass clef, with notes and rests.

Handwritten musical notation on a single staff, featuring a treble clef and notes.

Handwritten musical notation on two staves, including a treble clef and a bass clef, with notes and rests.

Handwritten musical notation on two staves, including a treble clef and a bass clef, with notes and rests.

Empty musical staves at the bottom of the page.

TA

Handwritten musical notation on a grand staff (treble and bass clefs). The music features a complex rhythmic pattern with many beamed notes and rests. The notation is dense and appears to be a technical exercise or a piece of music with a specific rhythmic focus.

Handwritten musical notation on a grand staff. This system includes a circled measure number '4' at the end of the piece. The notation continues with similar rhythmic complexity as the previous system.

Handwritten musical notation on a grand staff. This system shows further development of the rhythmic patterns, with some notes marked with accents or slurs.

Handwritten musical notation on a grand staff. This system contains circled measure numbers 2, 3, 4, 5, 6, and 7, indicating a sequence of measures. The notation is highly rhythmic and technical.

Handwritten musical notation on a grand staff. This system includes circled measure numbers 8, 9, and 10, marking the end of the piece. The notation concludes with a final cadence.

Handwritten musical notation for the first system. It consists of three staves: a treble clef staff at the top, a bass clef staff in the middle, and a guitar-style bass clef staff at the bottom. The treble staff contains a melodic line with notes and rests. The middle and bottom staves contain chords and rhythmic patterns. Above the middle staff, five sections are labeled with letters A, B, C, D, and E, corresponding to different chordal or melodic segments.

Handwritten musical notation for the second system. It consists of three staves: a treble clef staff at the top, a bass clef staff in the middle, and a guitar-style bass clef staff at the bottom. The treble staff contains a melodic line. The middle and bottom staves contain chords and rhythmic patterns. Above the middle staff, two sections are labeled with letters F and G.

Handwritten musical notation for the third system. It consists of three staves: a treble clef staff at the top, a bass clef staff in the middle, and a guitar-style bass clef staff at the bottom. The treble staff contains a melodic line. The middle and bottom staves contain chords and rhythmic patterns. Above the middle staff, three sections are labeled with letters A, B, and C.

Handwritten musical notation for the fourth system. It consists of three staves: a treble clef staff at the top, a bass clef staff in the middle, and a guitar-style bass clef staff at the bottom. The treble staff contains a melodic line. The middle and bottom staves contain chords and rhythmic patterns. Above the middle staff, two sections are labeled with letters X10 and X11.

Handwritten musical notation for the fifth system. It consists of three staves: a treble clef staff at the top, a bass clef staff in the middle, and a guitar-style bass clef staff at the bottom. The treble staff contains a melodic line. The middle and bottom staves contain chords and rhythmic patterns. Above the middle staff, ten sections are labeled with numbers 1 through 10.

4A

Musical notation system 1: Treble clef, 2/4 time signature. Measures 7 and 8. Includes handwritten notes and a circled '4A' above.

Musical notation system 2: Treble clef, 2/4 time signature. Measures 11-18. Includes handwritten notes and measure numbers 11 through 18.

Musical notation system 3: Treble clef, 2/4 time signature. Measures 19-22. Includes circled annotations ①, ②, ④, and ⑤.

Musical notation system 4: Treble clef, 2/4 time signature. Measures 18-20. Includes circled annotation (K) and notes D, E, F, G, H.

5A 3

Handwritten musical notation on a five-line staff. The notes are mostly quarter notes with stems pointing down. There are some slurs and beams. The text "0 Kreg" is written below the staff.

Handwritten musical notation on a five-line staff, showing chords and stems. The notes are mostly quarter notes with stems pointing down.

Handwritten musical notation on a five-line staff. The notes are mostly quarter notes with stems pointing down. The text "Kisp. r. w. TP3 K2" is written below the staff.

Handwritten musical notation on a five-line staff, showing chords and stems. The notes are mostly quarter notes with stems pointing down.

Handwritten musical notation on a five-line staff, showing chords and stems. The notes are mostly quarter notes with stems pointing down.

Handwritten musical notation on a five-line staff. The notes are mostly quarter notes with stems pointing down. The letters "D A B" are written below the staff.

Handwritten musical notation on a five-line staff. The notes are mostly quarter notes with stems pointing down. The text "Kisi atopa je M r. Jans" is written below the staff.

Handwritten musical notation on a five-line staff, showing chords and stems. The notes are mostly quarter notes with stems pointing down.

Empty musical staves at the bottom of the page.

Handwritten musical notation for the first system. The treble clef staff contains a few notes with a bar line. The bass clef staff contains the numbers 1, 2, 3, 4, 5, 6.

Handwritten musical notation for the second system. The treble clef staff contains a few notes with a bar line. The bass clef staff contains the numbers 7, 8, 9, 10.

Handwritten musical notation for the third system. The treble clef staff contains a few notes with a bar line. The bass clef staff contains the letters A, B, C and some musical notation.

Handwritten musical notation for the fourth system. The treble clef staff contains a few notes with a bar line. The bass clef staff contains the letters D, E and some musical notation.

Handwritten musical notation for the fifth system. The treble clef staff contains a few notes with a bar line. The bass clef staff contains the letter K and some musical notation.

6A

Handwritten musical notation for the first system. It consists of three staves: a treble clef staff with a melodic line, and two bass clef staves for guitar. The guitar part includes a bracketed chord sequence and a sequence of fret numbers: 4, 5, 6, 7.

Handwritten musical notation for the second system. It features three staves. The treble staff has a simple melodic line. The guitar part includes fret numbers 8, 5, 6, 5, followed by a section with dense, scribbled-out notes and heavy diagonal lines, indicating a complex or difficult passage.

Handwritten musical notation for the third system. The treble staff contains a melodic line with the instruction *lisp a p* written below it. The guitar part includes fret numbers 13, 14, 15, and 16.

Handwritten musical notation for the fourth system. It consists of three staves. The treble staff has a melodic line. The guitar part includes fret numbers 17, 20, 11, 15, 20, and concludes with a bracketed chord structure.

Handwritten musical notation on a single staff, featuring a treble clef and a key signature of one sharp (F#). The notation includes several notes and rests, with a vertical bar line separating the first and second measures.

Handwritten musical notation on a single staff, featuring a treble clef and a key signature of one sharp (F#). The notation includes notes and rests, with the numbers 18, 19, and 20 written below the staff. A circled scribble is present at the end of the staff.

Handwritten musical notation on a single staff, featuring a treble clef and a key signature of one sharp (F#). The notation includes notes and rests, with a circled '6' above the staff. A vertical red line is drawn through the staff, and the letters 'F' and 'E' are written below the staff.

Handwritten musical notation on a single staff, featuring a treble clef and a key signature of one sharp (F#). The notation includes notes and rests, with a circled 'D' above the staff. A vertical red line is drawn through the staff, and the letters 'A', 'B', 'D', 'E', 'F', and 'D' are written below the staff.

Handwritten musical notation on a single staff, featuring a treble clef and a key signature of one sharp (F#). The notation includes notes and rests, with a circled 'B' above the staff. A vertical red line is drawn through the staff, and the letters 'B', 'D', 'E', 'F', 'D', and 'B' are written below the staff.

Handwritten musical notation on a single staff, featuring a treble clef and a key signature of one sharp (F#). The notation includes notes and rests, with a circled 'D' above the staff. A vertical red line is drawn through the staff, and the letters 'D', 'E', and 'F' are written below the staff. There are additional scribbles and notes at the bottom of the page.

Handwritten musical notation for the first system, featuring a treble and bass staff with various notes and rests.

Handwritten musical notation for the second system, including a treble staff with a 'C' time signature and a bass staff with a circled 'C'.

Handwritten musical notation for the third system, showing treble and bass staves with rhythmic patterns.

Handwritten musical notation for the fourth system, with treble and bass staves.

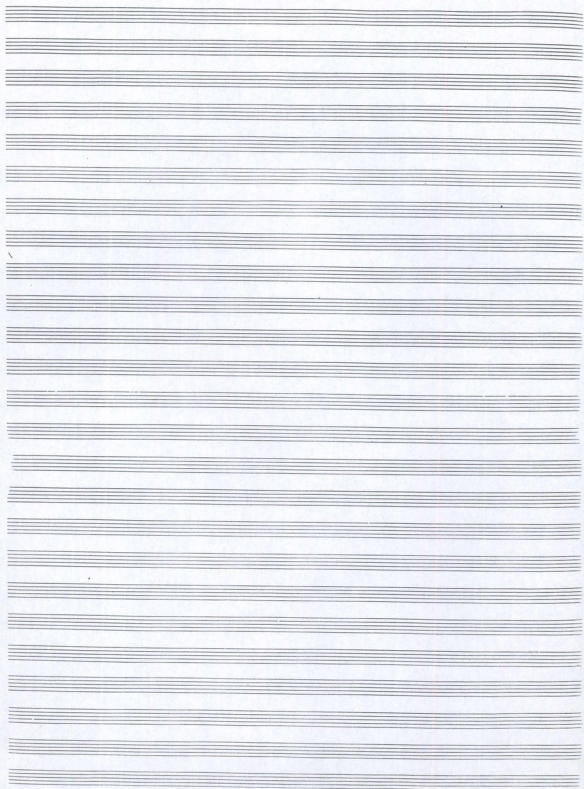
Handwritten musical notation for the fifth system, featuring treble and bass staves.

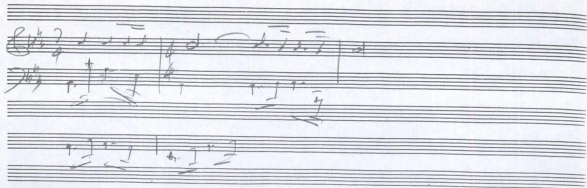
Handwritten musical notation for the sixth system, including treble and bass staves.

Handwritten musical notation for the seventh system, with treble and bass staves.

Handwritten musical notation for the eighth system, including treble and bass staves.

9. 1. 02
 Agar
 Dhanu Prakash





Handwritten musical notation on a grand staff (treble and bass clefs). The music consists of three measures. The first measure contains a whole note chord. The second and third measures contain eighth notes. A large '801' is written in the top left corner.

Handwritten musical notation on a grand staff. The first measure contains a whole note chord. The second measure contains a whole note chord with a fermata. The third measure contains a complex rhythmic pattern with many notes and rests, including some with '+' signs.

Handwritten musical notation on a grand staff. The first measure contains a whole note chord. The second measure contains a whole note chord with a fermata. The third measure contains a complex rhythmic pattern with many notes and rests, including some with '+' signs.

Handwritten musical notation on a grand staff. The first measure contains a whole note chord. The second measure contains a whole note chord with a fermata. The third measure contains a complex rhythmic pattern with many notes and rests, including some with '+' signs.

Handwritten musical notation on a grand staff. The first measure contains a whole note chord. The second measure contains a whole note chord with a fermata. The third measure contains a complex rhythmic pattern with many notes and rests, including some with '+' signs.

Five empty grand staves at the bottom of the page.

Handwritten musical notation, first system. Treble clef, 2/4 time signature. Section A is marked above the first measure. Section B is marked above the second measure. The bass line features a complex rhythmic pattern with many beamed notes.

Handwritten musical notation, second system. Treble clef, 2/4 time signature. The bass line continues with complex rhythmic patterns.

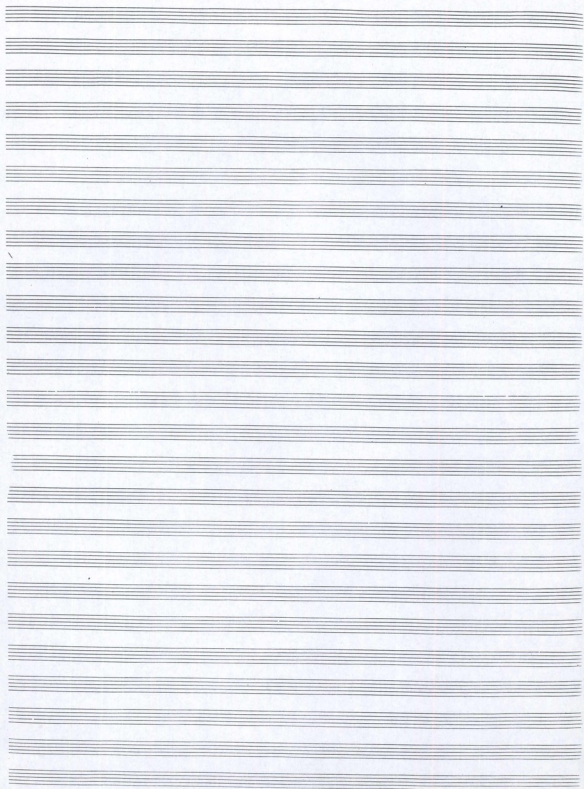
Handwritten musical notation, third system. Treble clef, 2/4 time signature. The bass line continues with complex rhythmic patterns.

Handwritten musical notation, fourth system. Treble clef, 2/4 time signature. Section A is marked above the first measure. Section B is marked above the second measure. The bass line continues with complex rhythmic patterns.

Handwritten musical notation, fifth system. Treble clef, 2/4 time signature. The bass line continues with complex rhythmic patterns.

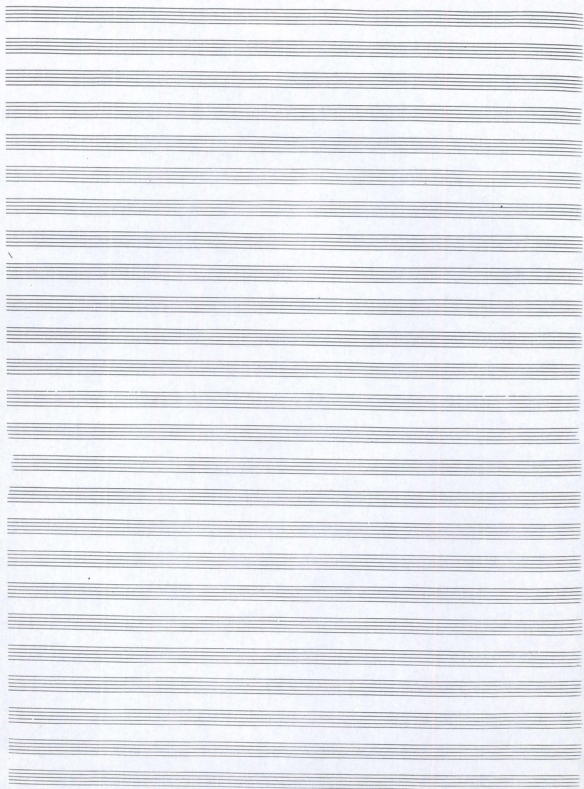
Handwritten musical notation, sixth system. Treble clef, 2/4 time signature. The bass line continues with complex rhythmic patterns.

Handwritten musical notation, seventh system. Treble clef, 2/4 time signature. The bass line continues with complex rhythmic patterns.



Handwritten musical score for a string quartet, labeled 'B'. It consists of four systems of staves. Each system includes a violin I part, a violin II part, a viola part, and a cello/bass part. The notation includes various musical symbols such as clefs, time signatures, notes, rests, and dynamic markings. The first system starts with a treble clef and a key signature of one flat. The second system has a treble clef and a key signature of two flats. The third system has a treble clef and a key signature of two flats. The fourth system has a treble clef and a key signature of two flats. The notation is dense and includes many slurs and ties.

1410



C

Handwritten musical notation for the first system, featuring treble and bass clefs, a key signature of one sharp (F#), and a 3/4 time signature. The notation includes notes, rests, and bar lines, with some parts underlined.

Handwritten musical notation for the second system, continuing the piece with treble and bass clefs, a key signature of one sharp, and a 3/4 time signature. It includes notes, rests, and bar lines, with some parts underlined.

Handwritten musical notation for the third system, continuing the piece with treble and bass clefs, a key signature of one sharp, and a 3/4 time signature. It includes notes, rests, and bar lines, with some parts underlined.

To D in B

A

Handwritten musical notation for the first system, featuring treble and bass clefs, a key signature of one flat, and rhythmic notation.

Handwritten musical notation for the second system, including treble and bass clefs, a key signature of one flat, and rhythmic notation.

Handwritten musical notation for the third system, including treble and bass clefs, a key signature of one flat, and a tempo marking of $9. \frac{2}{2}$.

Handwritten musical notation for the fourth system, including treble and bass clefs, a key signature of one flat, and a tempo marking of $9. \frac{2}{2}$.

Handwritten musical notation for the fifth system, including treble and bass clefs, a key signature of one flat, and a tempo marking of $9. \frac{2}{2}$.

Empty musical staves at the bottom of the page.

Handwritten musical notation on a grand staff (treble and bass clefs). The music consists of several measures with notes and rests. There are some markings below the staff, possibly indicating fingerings or dynamics.

Handwritten musical notation on a grand staff. Similar to the first system, it contains several measures of music with notes and rests. There are some markings below the staff.

Handwritten musical notation on a grand staff. The notation is less dense than the previous systems. There is a handwritten note below the staff that reads "on quella - f".

Handwritten musical notation on a grand staff. The music continues with several measures of notes and rests. There are some markings below the staff.

Handwritten musical notation on a grand staff. The notation includes notes, rests, and some markings below the staff.

Handwritten musical notation on a grand staff. The music concludes with several measures of notes and rests. There are some markings below the staff.

Handwritten musical notation on a grand staff, appearing to be a continuation or a separate system.

Epifania

*Stamaglio
on Phonon*

*2002
1966*

*per 36 X 60 cm
con sig. tra. di armonio*

†

Handwritten musical notation on a grand staff (treble and bass clefs). The top staff contains a melody with a sharp sign above it. The bottom staff contains a bass line with many beamed notes and slurs.

Handwritten musical notation on a grand staff. The top staff has a section labeled 'A' and a section labeled 'B'. The bottom staff contains a bass line with beamed notes and slurs.

Handwritten musical notation on a grand staff. The top staff contains a melody. The bottom staff contains a bass line with beamed notes and slurs.

Handwritten musical notation on a grand staff. The top staff contains a melody. The bottom staff contains a bass line with beamed notes and slurs. A section labeled 'A' and a section labeled 'B' are indicated.

Handwritten musical notation on a grand staff. The top staff contains a melody. The bottom staff contains a bass line with beamed notes and slurs.

Handwritten musical notation on a grand staff. The top staff contains a melody. The bottom staff contains a bass line with beamed notes and slurs.

Empty musical staves at the bottom of the page.

Handwritten musical notation on two staves. The top staff is in treble clef with a key signature of one flat (Bb) and a common time signature (C). The bottom staff is in bass clef. The music consists of a single melodic line in the treble and a rhythmic accompaniment in the bass, featuring eighth and sixteenth notes.

Handwritten musical notation on a single staff in treble clef, one flat key signature (Bb), and common time (C). The notation shows a sequence of notes and rests.

Handwritten musical notation on two staves. The top staff is in treble clef, one flat key signature (Bb), and common time (C). The bottom staff is in bass clef. The music features a melodic line in the treble and a rhythmic accompaniment in the bass.

Handwritten musical notation on two staves. The top staff is in treble clef, one flat key signature (Bb), and common time (C). The bottom staff is in bass clef. The music is divided into four measures labeled A, B, C, and D. Measure A contains a whole note chord, while B, C, and D contain eighth notes.

Handwritten musical notation on a single staff in treble clef, one flat key signature (Bb), and common time (C). The notation shows a sequence of notes and rests.

Handwritten musical notation on a single staff in treble clef, one flat key signature (Bb), and common time (C). The notation shows a sequence of notes and rests.

Handwritten musical notation on two staves. The top staff is in treble clef, one flat key signature (Bb), and common time (C). The bottom staff is in bass clef. The music is divided into four measures labeled A, B, C, and D, each containing a whole note chord.

Handwritten musical notation on two staves. The top staff is in treble clef, one flat key signature (Bb), and common time (C). The bottom staff is in bass clef. The music is divided into four measures labeled A, B, C, and D, each containing a whole note chord.

Am 5. Januari 2002 Wpa 7 at.
Kata baru yang
H Allah yang - Allah yang!
Xmas

Handwritten musical notation on a grand staff. The top staff has a treble clef and a key signature of one sharp (F#). The bottom staff has a bass clef. The music consists of several measures with notes and rests, some with slurs and ties.

Handwritten musical notation on a single staff with a treble clef and a key signature of one sharp (F#). The music features a series of notes with slurs and ties, suggesting a melodic line.

Handwritten musical notation on a grand staff. The top staff has a treble clef and a key signature of one sharp (F#). The bottom staff has a bass clef. The music consists of several measures with notes and rests, some with slurs and ties.

Handwritten musical notation on a grand staff. The top staff has a treble clef and a key signature of one sharp (F#). The bottom staff has a bass clef. The music consists of several measures with notes and rests, some with slurs and ties.

Handwritten musical notation on a single staff with a treble clef and a key signature of one sharp (F#). The music features a series of notes with slurs and ties, suggesting a melodic line.

Handwritten musical notation on a grand staff. The top staff has a treble clef and a key signature of one sharp (F#). The bottom staff has a bass clef. The music consists of several measures with notes and rests, some with slurs and ties.

Handwritten musical notation on a grand staff (treble and bass clefs). The music is in 4/4 time and consists of three measures. The first measure features a bass line with eighth notes and a treble line with a quarter note. The second measure continues the bass line with eighth notes and the treble line with a quarter note. The third measure shows a more complex bass line with eighth notes and a treble line with a quarter note.

Handwritten musical notation on a grand staff (treble and bass clefs). The music is in 4/4 time and consists of three measures. The first measure features a bass line with eighth notes and a treble line with a quarter note. The second measure continues the bass line with eighth notes and the treble line with a quarter note. The third measure shows a more complex bass line with eighth notes and a treble line with a quarter note.

Handwritten musical notation on a grand staff (treble and bass clefs). The music is in 4/4 time and consists of two measures. The first measure features a bass line with eighth notes and a treble line with a quarter note. The second measure continues the bass line with eighth notes and the treble line with a quarter note.

Empty musical staves for writing.

