

# 1 KAPITI ŽON OUPANO (A Estremu)

Missa Solopiano

ESTREM

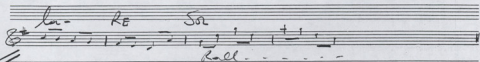
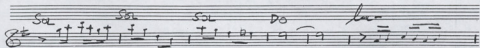
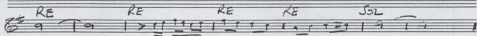
SOL

SOL

Appetito R. (P. Sopra)

SOL

SOL



Raccl. - - - - -

1 App. Sol

Vcel.

# KARABI (5<sup>me</sup> 2)

Handwritten musical notation for the first system, featuring a treble clef and a bass clef with notes and rests.

Handwritten musical notation for the second system, featuring a treble clef and a bass clef with notes and rests.

## 14. Air COUPLET

Flute  $8\sharp \frac{3}{4}$   
 Clarinet  $8\sharp \frac{2}{4}$   
 Horns (Acorchados)  $8\sharp \frac{2}{4}$  SOL  
 Violon  $8\sharp \frac{3}{4}$

Handwritten musical notation for the 'Air COUPLET' section, showing parts for Flute, Clarinet, Horns, and Violon.

Handwritten musical notation for the first system of the 'Air COUPLET' section, featuring a treble clef and a bass clef with notes and rests.

Handwritten musical notation for the second system of the 'Air COUPLET' section, featuring a treble clef and a bass clef with notes and rests.

Handwritten musical notation for the first system of 'Karabi (3)'. It features a vocal line in treble clef and a piano accompaniment in bass clef. The piano part includes a bass line and a right-hand line with chords. The notation includes a key signature of one sharp (F#) and a 4/4 time signature. The first measure of the piano right hand has 'RE' written below it. The second measure has 'Sa' written below it. The system ends with a double bar line and arrows pointing to sections A and B.

Handwritten musical notation for the second system, divided into two sections labeled A and B. Section A contains two measures of piano accompaniment with lyrics 'RE RE Da Da Sa' written below. Section B contains two measures with lyrics 'RE RE Da Sa'. Arrows from the first system point to these sections.

Handwritten musical notation for the third system, continuing the piano accompaniment. It features a vocal line in treble clef and a piano accompaniment in bass clef. The piano part includes a bass line and a right-hand line with chords. The notation includes a key signature of one sharp (F#) and a 4/4 time signature. The system ends with a double bar line.

A series of ten empty musical staves, each consisting of a treble clef staff and a bass clef staff, intended for further notation.

