

Noi jivow allhaysi opai Tempri:

~~TRUMP~~

Passacaglia's

N° 1

l = 58

Pass N° 2

l = 176 (200)

Pass N° 3

l = 54

IV

Dolce

l = 40

Allegro

l = 176

Pass N° 4

l = 56

Pass N° 5

l = 58 (opus 58)

Passage N° 2

~~Flute~~

CORNI

kor

TRUMP. 1.2

N° 2

N° 3

(Score ora. 13)

FLAUTI 1.2

kor

ARPA

Noi Nagayaw

kor N° 10

EVVIAE MIPA

(kor ins 2 MIPA opai N° 11)

(Score page 27)

[Blene kor photocopie to parastin, pi oi nira nam Sloghristy]

K 113

1
[5] ~~Handwritten notes and scribbles at the top of the page.~~

[6] ~~Handwritten notes and scribbles in the middle section.~~

Frame N. 2

~~Large scribbled-out section of text.~~

Handwritten notes and scribbles below the large scribble.

Handwritten notes and scribbles in the lower middle section.

[B] ~~Handwritten notes at the bottom of the page.~~

Pass No 5 VI

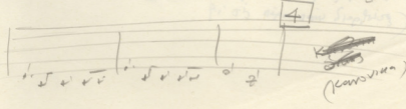
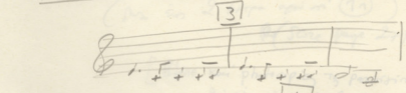
① Η Xαρωμή vois γίνε Μουσική και Πόρεια.
Σταφύλι του Καυσιόγια ~~Ποιητής~~ αί Χρωστίου.

② Τα Viol I και II vois διαγραφούν ~~==~~
ορί N° ④ (5 ήχοι)
ορί N° ⑤ (1 ήχοι)
Αλλι το 4 ήχοι με N° ⑥ τρία ήχοι

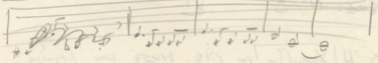
③ Τα Fl 1.2 και ορί OB. 1.2 vois διαγραφούν
Δύο ήχοι ορί N° ⑤
Ένας ήχοι ήχοι N° ⑤
Αλλι το 4 ήχοι με N° ⑥ τρία ήχοι

④ Trp 1.2 - Εναν με N° ④ και γίν τρία ήχοι
~~Καυσιόγια~~
vois διαγραφεί 2^ο Trpe
(2 Trp 2 tacet)

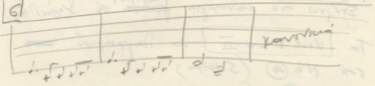
Trp 3 vois διαγραφεί:



5



6



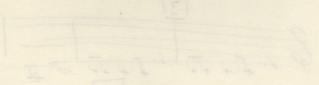
7

8

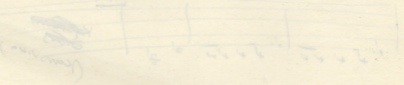
9

10

11



12



Changements de tempo à effectuer:

-Passacaglia No 1	=58
-Passacaglia No 2	=176
-Passacaglia No 3	=54
IV	
Dolce	=40
Allegro	=176
-Passacaglia No4	=56
-Passacaglia No 5	=58 (déjà noté).

P A S S A C A G L I A N o 2 .

CORPE I-2

et

A effacer de la mesure 5 du No2 jusqu'au No3 (partition p.13).

TROMPES I-2

FLUTES 1-2 et HARPE : Effacer à partir du No 10 neuf mesures. (C'est-à-dire jusqu'à deux mesures précédant le No II), (partition page 27).

(Voir également les photocopies de la partition portant les corrections ci-dessus).

P A S S A C A G L I A N o 5 . V I .

1- La Chorale doit devenir mixte et plus importante. Ci-joint la nouvelle partition pour chorale.

2- Les Violons I et II sont à supprimer au No 4 (5 mesures)
au No 5 (Une mesure)

Documentos de todos los años

- I- 1900
- II- 1901
- III- 1902
- IV- 1903
- V- 1904
- VI- 1905
- VII- 1906
- VIII- 1907
- IX- 1908
- X- 1909
- XI- 1910
- XII- 1911

ANEXO I

ARTICULO I

El presente Reglamento tiene por objeto regular el funcionamiento de la Comision de...

El presente Reglamento tiene por objeto regular el funcionamiento de la Comision de...

El presente Reglamento tiene por objeto regular el funcionamiento de la Comision de...

ARTICULO II

El presente Reglamento tiene por objeto regular el funcionamiento de la Comision de...

A partir du No6, mesure 4, trois mesures.

3- Les FLURS I-2 et les HAUSNOIS I-2 sont à supprimer:

Deux mesures avant le No5

Une mesure après le No5

A partir de la 4^{ème} mesure du No6, trois
mesures.

4- TRP I-2. Sur le No4, et pour trois mesures, supprimer la 2^{ème} TRPS (2 TRP
2 Tacet).

TRP X.

A corriger:

HAZARANES ?

PRELUDE

Andante espressivo

Fl 8 - - - - -
ob 8 - - - - -
Cl 8 - - - - -
Fag 7 - - - - -

P molto espress

6
8

AAA

P son-cc

CELESTA

PP pedali

6
8

2 soli-sonc
Violini I
Tutti altri

ppp

2 soli-sonc
Violini II
Tutti altri

ppp

2 soli-sonc
ALTI
Tutti altri

ppp

2 soli-sonc
VCELLI
Tutti altri

ppp

The first system consists of five staves. The top staff is a vocal line with a long note followed by a rest and then a melodic phrase. The second and third staves are piano accompaniment with rhythmic patterns. The fourth and fifth staves are also piano accompaniment. Dynamics include *mf* and *ff*. There are accents and slurs throughout.

The second system continues the piano accompaniment with complex rhythmic textures, including sixteenth and thirty-second notes. It features a variety of articulation marks and dynamic markings.

10 Recitativa

The 'Recitativa' section begins with a piano accompaniment. The first part has a steady rhythmic pattern. The second part features a dense, rapid rhythmic texture with many sixteenth notes. Dynamic markings include *f*, *mf*, and *ff*. There are also slurs and accents.

Fl: *dim*

Op: *FF dim*

Cl: *FF dim*

Fg: *FF dim*

Arpa: *p*

PP dolce

PP dolce

PP pedal

15

In Tempo

2 soli *FF dim*

I Viol

Altri div in 3

2 soli *FF dim*

II Viol

Altri *div*

2 soli *FF dim*

Alt.

Altri *div*

2 soli

Vc.

Altri

PPP

PPP

PPP

PPP

PPP

PPP

PPP

PPP

PPP

PPP

PPP

PPP

PPP

PPP

PPP

Musical score for the first system, measures 1-19. The score includes a vocal line and a piano accompaniment. The vocal line has a 'dim' marking. The piano accompaniment has a 'C.F. 2C' marking. The score is written in a key signature of one sharp (F#) and a 2/4 time signature.

20

Musical score for the second system, measures 20-24. The score includes a piano accompaniment. The score is written in a key signature of one sharp (F#) and a 2/4 time signature. The piano accompaniment features various chordal textures and markings: 'CCE2L', 'CCE2G', 'CCE2C', and 'CCE2A'.

The first system consists of four staves. The top three staves are marked with a forte (**ff**) dynamic and contain rhythmic notation with accents and slurs. The bottom two staves are marked with a piano (**p**) dynamic and contain rhythmic notation with slurs. The notation includes various rhythmic values and articulation marks.

Recitativo 25

ff *canta* **fff** *dim* **ppp**

The second system is labeled "Recitativo" and numbered "25". It consists of five staves. The top two staves are marked with a forte (**ff**) dynamic and contain complex rhythmic patterns with slurs and accents. The middle two staves are marked with a fortissimo (**fff**) dynamic and contain similar rhythmic patterns. The bottom staff is marked with a pianissimo (**ppp**) dynamic and contains a simpler rhythmic pattern. The notation includes various rhythmic values, slurs, and accents.

pp
dolce

pp

pp
piano

This system contains six staves. The top two staves are for a piano, with the first staff marked 'pp dolce'. The third and fourth staves are for a harp, with the third staff marked 'pp'. The bottom two staves are for a piano, with the fifth staff marked 'pp piano'. The music is in 3/4 time and consists of four measures. The piano part features a melodic line with grace notes, while the harp part plays a rhythmic accompaniment of eighth notes.

Vid. I senza sord. PPP

This system contains six staves. The top two staves are for a piano, with the first staff marked 'Vid. I senza sord. PPP'. The third and fourth staves are for a harp, with the third staff marked 'pp'. The bottom two staves are for a piano, with the fifth staff marked 'pp'. The music is in 3/4 time and consists of four measures. The piano part features a melodic line with grace notes, while the harp part plays a rhythmic accompaniment of eighth notes.

Fl. 2
Op.
Cl.
Fg.
Acp.
Cel.

35

molto dim. Solo
P molto espressivo
Viol. Alt. div in 2
PP dolce
Tutti
PP dolce
Tutti
PP dolce
Tutti
PP dolce
Poco meno

40

45

Poco cresc.

pp dolce

dim 50

55

cresc.

dim

sfz

sfz