

H E A N S O N A

Basamir⁹¹

The first system of the manuscript features a vocal line on a single staff with a treble clef and a common time signature (C). The melody begins with a whole rest, followed by a series of eighth and sixteenth notes. Below the vocal line is a piano accompaniment consisting of two staves. The right hand plays a complex, rhythmic pattern of sixteenth and thirty-second notes, while the left hand provides a simpler harmonic accompaniment with eighth notes.

A single staff of handwritten musical notation, likely a continuation of the vocal line from the first system. It contains several measures of music with eighth and sixteenth notes.

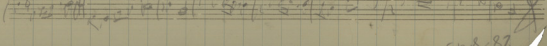
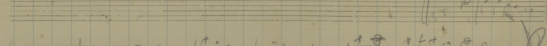
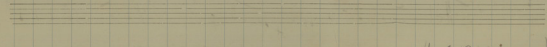
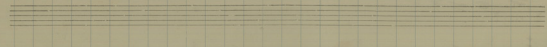
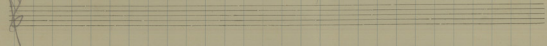
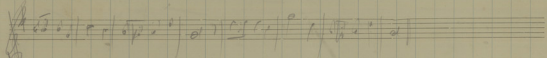
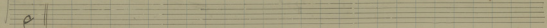
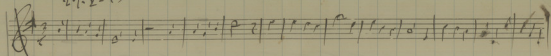
A single staff of handwritten musical notation, likely a continuation of the piano accompaniment from the first system. It shows a dense texture of sixteenth and thirty-second notes.

A single staff of handwritten musical notation, likely a continuation of the vocal line. It features a mix of eighth and sixteenth notes with some rests.

A single staff of handwritten musical notation, likely a continuation of the vocal line. It contains several measures of music with eighth and sixteenth notes.

A single staff of handwritten musical notation, likely a continuation of the piano accompaniment. It shows a rhythmic pattern of eighth and sixteenth notes.

27.2-43



28 and 82