

ΦΥΣΤΡΟΜΟΝΙΚΑ

ΚΙΣΑΡΑ I

ΚΙΣΑΡΑ II

ΜΠΕΡΟΓΙΑΝΝΗΣ (Em)

*M. J. ...*

8# 4/4

Bm Em — D Em Bm Em D Bm

8# 4/4

Am Bm Bm Em — D Em Em G Am D

8# 4/4

Em — Bm Am Bm D Bm Em Am D

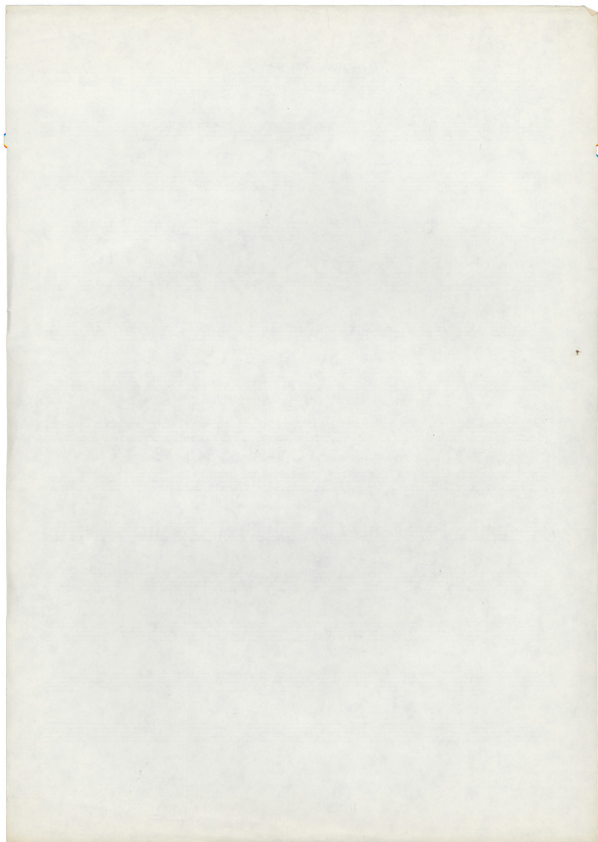
8# 4/4

Am G Em Am — C C Bm Bm Am D Bm

8# 4/4

Em Bm C LAm Bm D Am D Em =

Empty musical staves

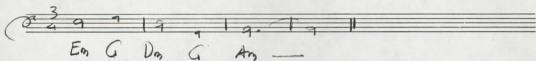
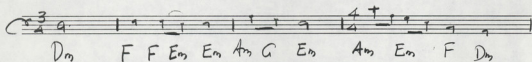
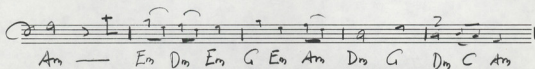
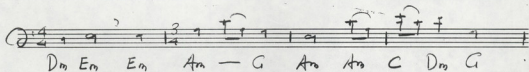
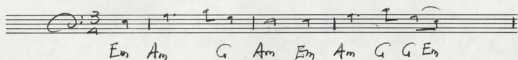


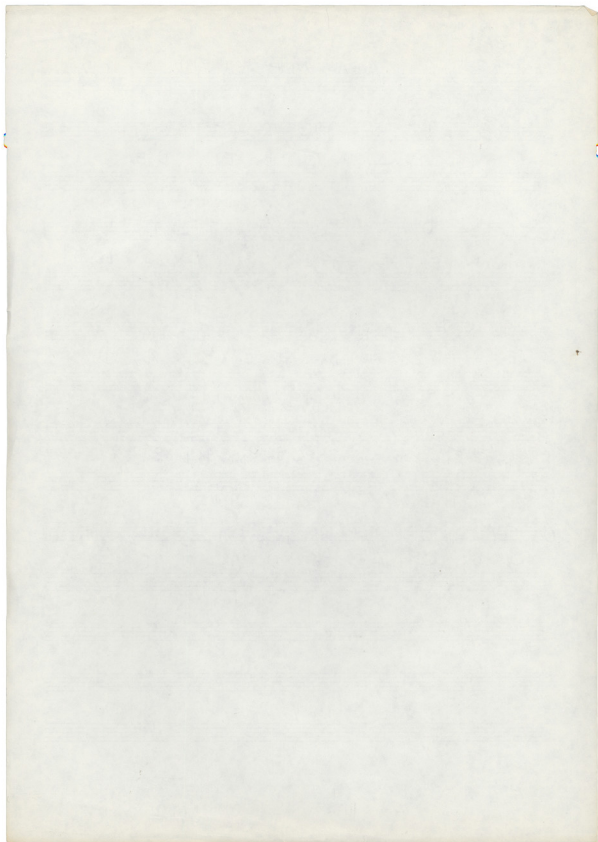
VCELLO  
ΚΙΘΑΡΑ I  
ΚΙΘΑΡΑ II

12

ΜΙΣΘΟΤΙΑΝΝΗΣ (Am)

Mimis Tsilipis





KISADA I  
KISADA II  
ΦΛΟΓΕΡΑ

m

13

M. V. G. S.

VIOLINO I (Solo) ΜΠΕΡΟΤΙΑΝΝΑ (D<sub>2</sub>)

The image shows a handwritten musical score for Violino I (Solo) with guitar chords. The score is written on a grand staff with a treble clef and a key signature of one flat (Bb). The tempo is marked 'm' (moderato). The piece is titled 'KISADA I', 'KISADA II', and 'ΦΛΟΓΕΡΑ'. The composer is identified as 'M. V. G. S.' in the top right corner. The score consists of several systems of music, each with a treble clef staff and a guitar chord staff below it. The chords are written in blue ink and include various triads and dyads such as Em, Am, G, Dm, C, F, Bb, and D<sub>2</sub>. The notation includes notes, rests, and bar lines, with some notes marked with stems and flags. The overall structure is a single melodic line for the violin with accompanying guitar chords.

Em ↓ Am ↓ G ↓ Am Em ↓ Am G D<sub>2</sub>

Am D<sub>2</sub> — C — D<sub>2</sub> Am D<sub>2</sub> — C Am

Am ↓ D<sub>2</sub> ↓ Am ↓ G ↓ Am ↓ G D<sub>2</sub> G

Gm Am Am D<sub>2</sub> — C D<sub>2</sub> — F — Gm C

Am ↓ D<sub>2</sub> ↓ Gm ↓ Am ↓ G D<sub>2</sub> Am D<sub>2</sub> G

D<sub>2</sub> — Am — Gm Am — C Am D<sub>2</sub> Gm C

D<sub>2</sub> ↓ Am ↓ D<sub>2</sub> ↓ Gm ↓ Gm ↓ Am ↓ Am ↓ D<sub>2</sub> ↓ C ↓ Am

Gm F D<sub>2</sub> Gm Bb Bb Am Am D<sub>2</sub> C Am

Gm ↓ Am ↓ Bb ↓ Gm ↓ Am ↓ C ↓ Gm ↓ C ↓ D<sub>2</sub>

D<sub>2</sub> Am Bb Gm Am C Gm C D<sub>2</sub>



KISAPA I  
KISAPA II  
ΦΛΟΓΕΡΑ

Mitsy Schymin

VIOLINO I (SOL) ΜΠΕΡΟΤΑΝΝΑ (Dm)

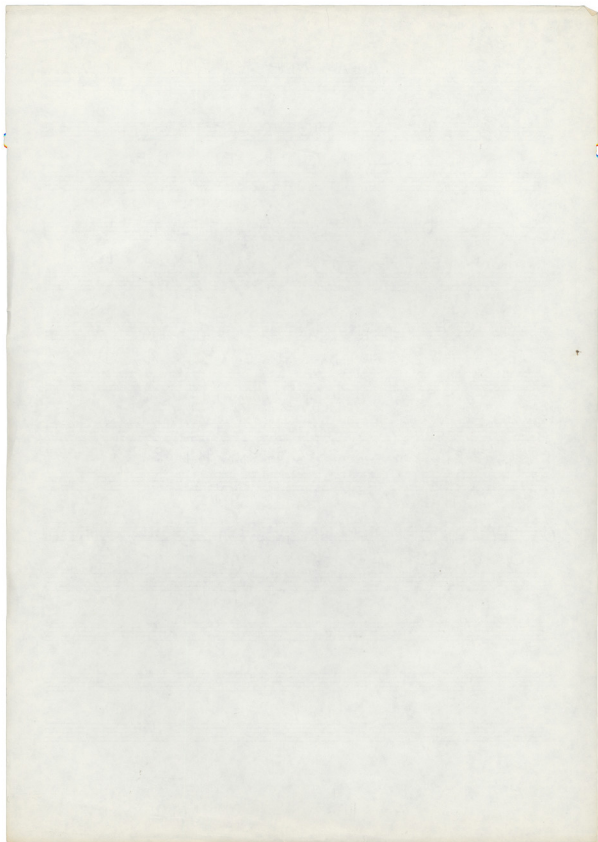
Am Dm - C Dm Am Dm - C Am

Gm Am Am D - C Dm - F - Gm C

Dm Am - Gm Am C Am Dm Gm C

Gm F Dm Gm Bb Bb Am Am Dm C Am

Dm Am Bb Gm Am C Gm C Dm

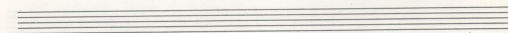
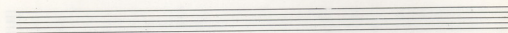
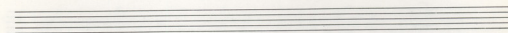
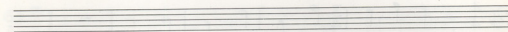
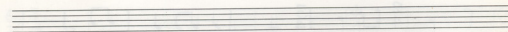
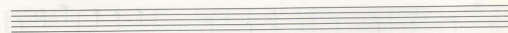
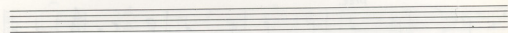
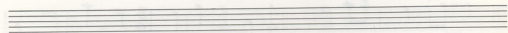
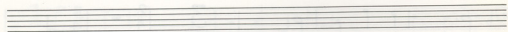
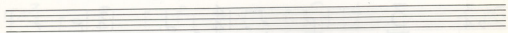
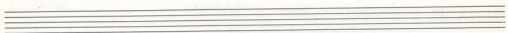


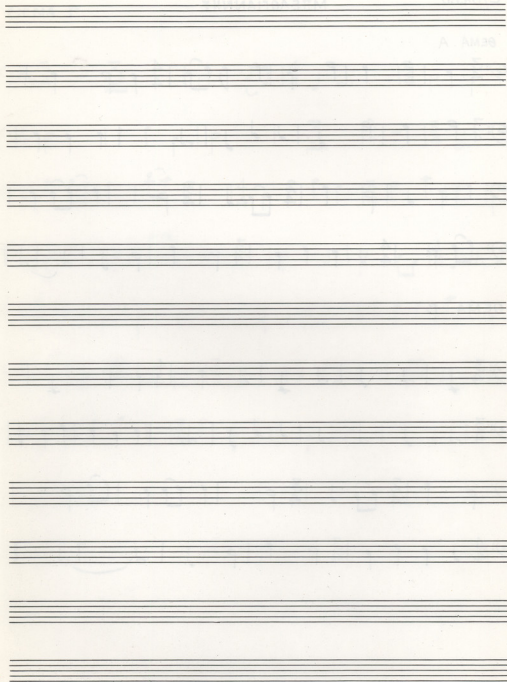


## ΘΕΜΑ Γ

Handwritten musical score for 'ΘΕΜΑ Γ' in bass clef. The score consists of seven staves of music. The first staff begins with a treble clef, a key signature of one flat (B-flat), and a 3/4 time signature. A bracketed '3' indicates a triplet of eighth notes. The second staff continues with a 4/4 time signature, followed by a 3/4 time signature. The third staff features a 4/4 time signature, then a 3/4 time signature. The fourth staff includes the instruction 'Pizz.' above the first measure. The fifth staff starts with a 3/4 time signature. The sixth staff begins with a 2/4 time signature, followed by a 3/4 time signature. The seventh staff starts with a 4/4 time signature, then a 3/4 time signature, and ends with a whole rest.

Four empty musical staves, each consisting of five horizontal lines, provided for additional notation.





C/BASSO

ΜΠΕΛΟΓΙΑΝΝΗΣ

ΘΕΜΑ Α

Musical score for Theme A, C/BASSO. The score consists of four staves of music. The first staff begins with a treble clef and a 3/4 time signature, followed by a 4/4 time signature. The second staff begins with a bass clef and a 3/4 time signature. The third staff begins with a bass clef and a 2/4 time signature, followed by a 3/4 time signature. The fourth staff begins with a bass clef and a 4/4 time signature, followed by a 3/4 time signature. The music is written in a single melodic line.

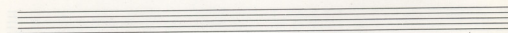
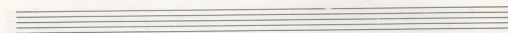
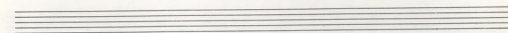
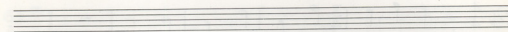
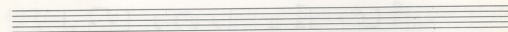
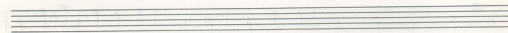
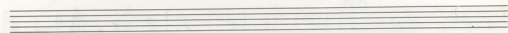
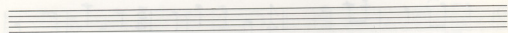
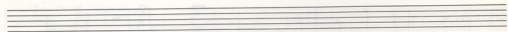
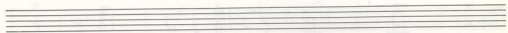
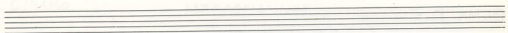
ΘΕΜΑ Β

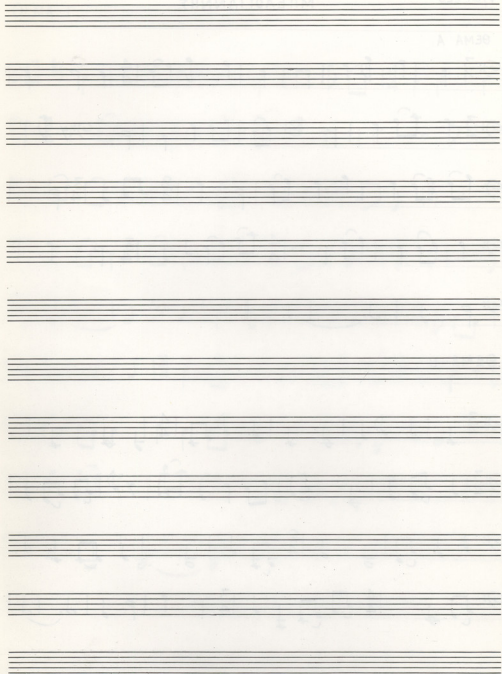
Musical score for Theme B, C/BASSO. The score consists of four staves of music. The first staff begins with a bass clef and a 3/4 time signature, followed by a 4/4 time signature. The second staff begins with a bass clef and a 3/4 time signature. The third staff begins with a bass clef and a 2/4 time signature, followed by a 3/4 time signature. The fourth staff begins with a bass clef and a 4/4 time signature, followed by a 3/4 time signature. The music is written in a single melodic line.

Two sets of empty musical staves, each consisting of five lines.

## ΘΕΜΑ Γ

Handwritten musical score for 'ΘΕΜΑ Γ'. The score consists of ten staves of music. The first staff is a treble clef with a 3/4 time signature. The second staff is a bass clef with a 3/4 time signature. The third staff is a bass clef with a 3/4 time signature. The fourth staff is a bass clef with a 3/4 time signature. The fifth staff is a bass clef with a 3/4 time signature. The sixth staff is a bass clef with a 4/4 time signature. The seventh staff is a bass clef with a 3/4 time signature. The eighth staff is a bass clef with a 3/4 time signature. The ninth staff is a bass clef with a 3/4 time signature. The tenth staff is a bass clef with a 3/4 time signature. The music is written in a single system with various time signatures and clefs.





V/CELLO

ΜΠΕΛΟΓΙΑΝΝΗΣ

ΘΕΜΑ Α

Musical score for Theme A, Cello part. The score consists of five staves of music. The first staff begins with a 3/4 time signature, followed by a 4/4 time signature. The second staff continues with a 3/4 time signature. The third staff features a 2/4 time signature, followed by a 3/4 time signature. The fourth staff starts with a 4/4 time signature, followed by a 3/4 time signature. The fifth staff concludes the theme with a double bar line.

ΘΕΜΑ Β

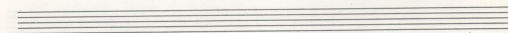
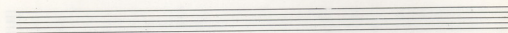
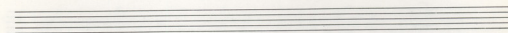
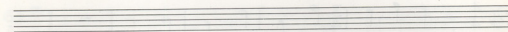
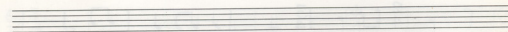
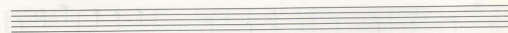
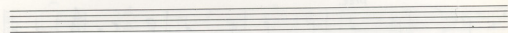
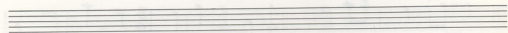
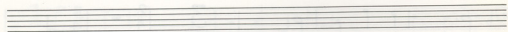
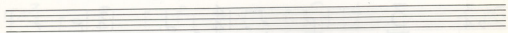
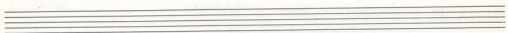
Musical score for Theme B, Cello part. The score consists of four staves of music. The first staff begins with a 3/4 time signature, followed by a 4/4 time signature. The second staff continues with a 3/4 time signature. The third staff features a 2/4 time signature. The fourth staff starts with a 4/4 time signature, followed by a 3/4 time signature. The score ends with a double bar line.

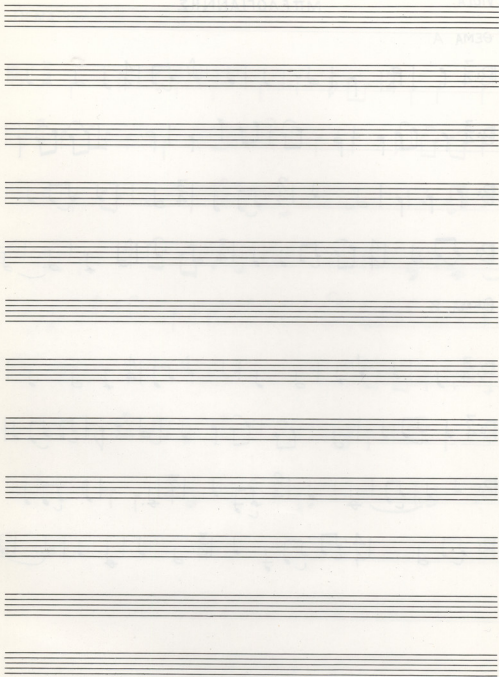


## ΘΕΜΑ Γ

Handwritten musical score for 'ΘΕΜΑ Γ'. The score consists of eight staves of music, each with a different key signature and time signature. The notation includes various rhythmic values, accidentals, and phrasing slurs. The staves are arranged vertically, with the first staff starting with a treble clef and a key signature of one flat (B-flat). The subsequent staves use different clefs and key signatures, including bass clefs and a key signature of two flats (B-flat and E-flat). The time signatures vary, including 3/4, 4/4, 2/4, and 3/8. The music concludes with a double bar line on the eighth staff.

Three empty musical staves, each consisting of five horizontal lines, provided for additional notation.





VIOLA

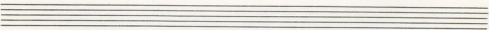
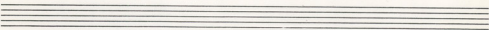
ΜΠΕΛΟΓΙΑΝΝΗΣ

ΘΕΜΑ Α

Musical score for Viola, Theme A. The score consists of four staves of music. The first staff begins with a treble clef and a 3/4 time signature, followed by a 4/4 time signature. The second staff continues with a 3/4 time signature. The third staff features a 2/4 time signature, a 3/4 time signature, and a 4/4 time signature. The fourth staff continues with a 4/4 time signature, a 3/4 time signature, and a 4/4 time signature. The music is written in a single melodic line.

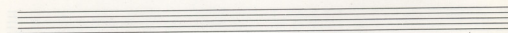
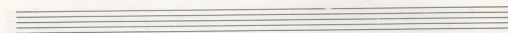
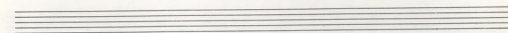
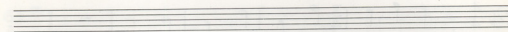
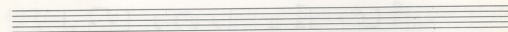
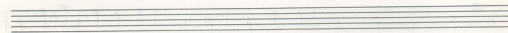
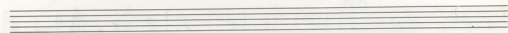
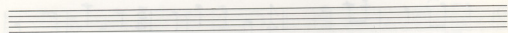
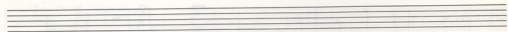
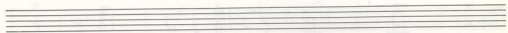
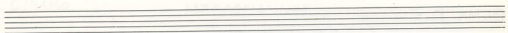
ΘΕΜΑ Β

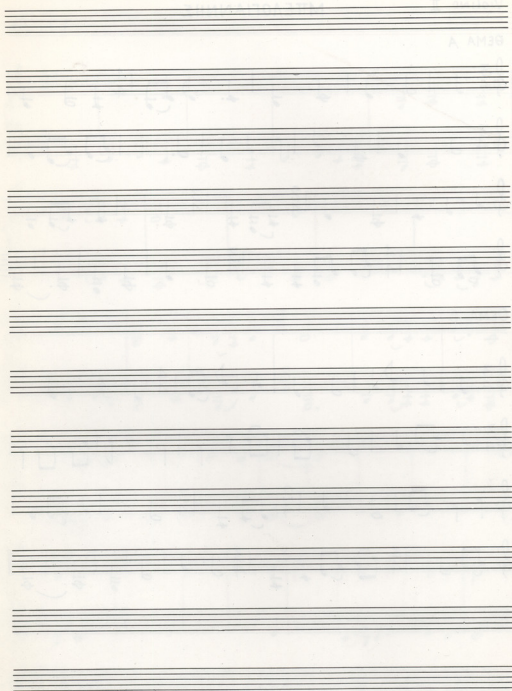
Musical score for Viola, Theme B. The score consists of four staves of music. The first staff begins with a treble clef and a 3/4 time signature, followed by a 4/4 time signature. The second staff continues with a 3/4 time signature. The third staff features a 2/4 time signature, a 3/4 time signature, and a 4/4 time signature. The fourth staff continues with a 4/4 time signature, a 3/4 time signature, and a 4/4 time signature. The music is written in a single melodic line.



## ΘΕΜΑ Γ

Handwritten musical score for 'ΘΕΜΑ Γ' (Theme Gamma). The score is written on six systems of two staves each, using a grand staff format (treble and bass clefs). The key signature is one flat (B-flat). The time signature is 3/4, which changes to 4/4 in the second measure of the first system and remains 4/4 for the rest of the piece. The notation includes various rhythmic values (quarter, eighth, and sixteenth notes), rests, and dynamic markings. The piece concludes with a double bar line and repeat signs.





Violino II

ΜΠΕΛΟΓΙΑΝΝΗΣ

ΘΕΜΑ Α

Musical score for Theme A, Violino II, by Mpelogiannis. The score consists of four staves of music. The first staff begins with a treble clef and a 3/4 time signature. The second staff continues the melody. The third staff features a key signature change to one flat (B-flat) and includes a 2/4 time signature change. The fourth staff concludes the theme with a double bar line and repeat dots.

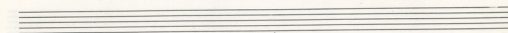
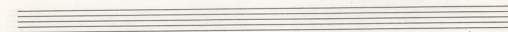
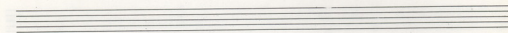
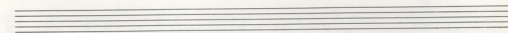
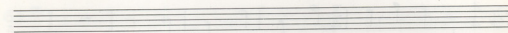
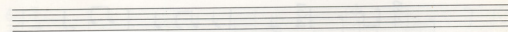
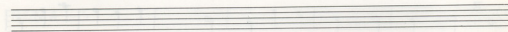
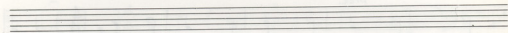
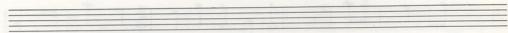
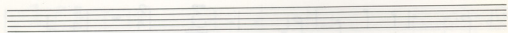
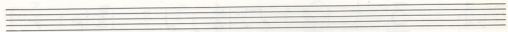
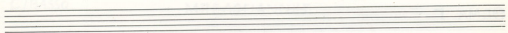
ΘΕΜΑ Β

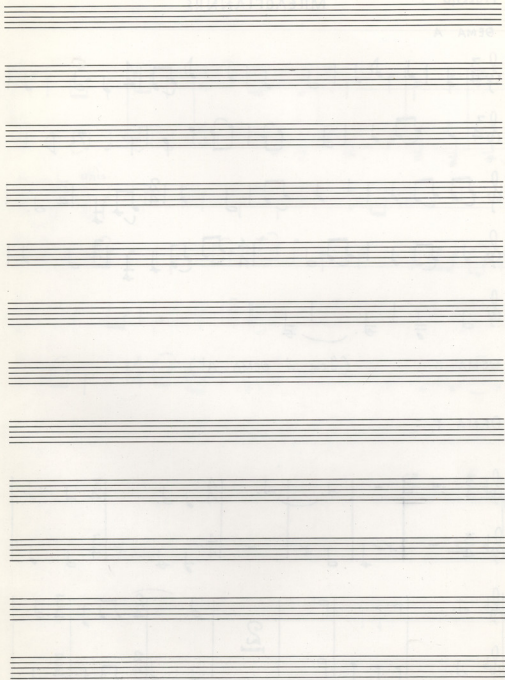
Musical score for Theme B, Violino II, by Mpelogiannis. The score consists of four staves of music. The first staff begins with a treble clef and a 3/4 time signature. The second staff continues the melody. The third staff features a key signature change to one flat (B-flat) and includes a 2/4 time signature change. The fourth staff concludes the theme with a double bar line and repeat dots.

Two empty musical staves, each consisting of five horizontal lines, located at the bottom of the page.



Handwritten musical score on page 23, featuring a piano introduction and a vocal melody. The score consists of six staves. The first two staves are piano accompaniment. The third staff begins with a vocal line marked "unis." and includes a fermata. The fourth, fifth, and sixth staves continue the vocal melody with various time signatures (3/4, 4/4, 2/4, 3/4, 4/4).





Violino I

ΜΠΕΛΟΓΙΑΝΝΗΣ

ΘΕΜΑ Α

Musical score for Violino I, Theme A. It consists of five staves of music in treble clef. The first staff starts in 3/4 time and changes to 4/4. The second staff continues in 4/4. The third staff changes to 2/4 and then 3/4. The fourth staff changes to 4/4 and then 3/4. The fifth staff concludes the theme with a final cadence.

ΘΕΜΑ Β (όμοιος με ΘΕΜΑ Α!)

ΘΕΜΑ Γ

Musical score for Violino I, Theme C. It consists of two systems of piano accompaniment. The first system has two staves (treble and bass clef) with various time signatures (3/4, 4/4, 3/4). The second system also has two staves with similar time signatures and includes a '21' marking in the bass staff.