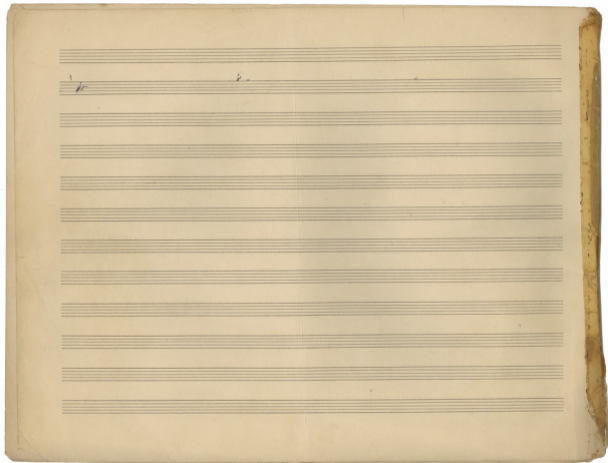




1850



↑ ILL WEI BY MOON LIGHT,
"DANSE ET CHANT CRETIJ,"

M. K. S. THESSALONIA

MANDOLA (5) LYRA (10) P.G.

10

CHANT 8/4

CLARIN 8

LYRA 8/8

OBOE 8

Kithara I 8/4

Kithara II 8/4

Viola 7/4

BATTERIES 6/4

GRASSA

Detailed description of the musical score: The score is written on ten staves. The top staff is for 'CHANT' in 8/4 time. The second staff is for 'CLARIN' in 8/8 time. The third staff is for 'LYRA' in 8/8 time, starting with a forte 'F' dynamic. The fourth staff is for 'OBOE' in 8/8 time. The fifth and sixth staves are for 'Kithara I' and 'Kithara II' in 8/4 time, with rhythmic patterns of eighth notes and rests. The seventh staff is for 'Viola' in 7/4 time. The eighth staff is for 'BATTERIES' in 6/4 time, with a 'GRASSA' marking. Above the first staff, there are markings for 'MANDOLA (5)' and 'LYRA (10) P.G.', and a circled '10' is written below the first staff.

X

15

Ni
VINGER

20

20

INTRO

12°

Clarinet I staff with notes and rests.

Clarinet II staff with notes and rests.

Trumpet staff with notes and rests.

Trombone staff with notes and rests.

Left Hand I staff with notes and rests.

Left Hand II staff with notes and rests.

Voice staff with notes and rests.

Bass staff with notes and rests.

40

45

Allegro

(25)

Tutti

- 3

(30)

DANSE (35)

30

20!
37

50

Group

Group

Les tambours
qui apporte un plat

(37)



BAIRD & CO

4. Hymne

40

45

Chant

Clair

LYRA

VOIX

VI

VI

Viol

Bass

Handwritten musical notation for the Chant part, consisting of a single staff with a treble clef and a common time signature.

Handwritten musical notation for the Clair part, consisting of a single staff with a treble clef and a common time signature.

Handwritten musical notation for the LYRA part, consisting of a single staff with a treble clef and a common time signature.

Handwritten musical notation for the VOIX part, consisting of a single staff with a treble clef and a common time signature.

Handwritten musical notation for the VI part, consisting of a single staff with a treble clef and a common time signature.

Handwritten musical notation for the VI part, consisting of a single staff with a treble clef and a common time signature.

Handwritten musical notation for the Viol part, consisting of a single staff with a treble clef and a common time signature.

Handwritten musical notation for the Bass part, consisting of a single staff with a bass clef and a common time signature.

50

pp

60

70

le Pape

les danseurs
et le group

les deux prairie

⑤ ANOTHER GROUP

⑤5 ANOTHER GROUP

3.40
VIVE LE PEUPLE

50

les pieds du premier danseur

Group applauding & drinking

2.5

Visage du premier danseur

Les deux premiers

LE DANSEUR
et le Group

Le Pape
Le Pape

Chant 6

69

70

85 Un group

90 Un chœur 155

Clarin 8

1-2

Lyra 8

UPE 8

K I

155

K II

Viol 7

90

910

Bass

Le Chœur

87

110

230

91

97

15

87

130

91

97

15

Les pieds au sol
75

Les pieds
garnis
80

Colonne

Handwritten musical notation on a single staff with notes and rests. Below the staff, there are two arrows pointing to specific measures, each labeled "Un group" and "100".

105 Le Pense 120
2nd
tune

Handwritten musical score consisting of multiple staves. The top two staves are treble clef, and the bottom two are bass clef. The score includes various musical notations such as notes, rests, and chords. There are some red markings, including a large red 'C' and a red 'END'.

100
220
le Pense qui
23! dans

END

120 240

130
130

85

allegro

ff

90

moderato

f

95



Handwritten musical notation on a single staff, consisting of a series of empty measures.

Handwritten musical notation on a grand staff (treble and bass clefs). The music features complex rhythmic patterns with many beamed notes and accents.

Handwritten musical notation on a grand staff. The music continues with similar rhythmic complexity. A dynamic marking *P* (piano) is visible in the middle of the system.

Handwritten musical notation on a grand staff. The bottom staff shows a series of rhythmic patterns with accents. A dynamic marking *Mandala* with a downward arrow is present. The number *140* is written in red ink.

*Daंसत
les pieds*

135

140

137

140

Victor

-7- Victor

1st Dance
VBS

(100)

(105)

VBS

1st
MID

LYRA

Danceur

Musiciens

VCLAR

Force of
1st Dance

Solo

FF

db

Handwritten musical score for a dance piece. The score is written on ten staves. The top staff is a treble clef with a common time signature. The second staff is a treble clef with a key signature of one sharp (F#) and a common time signature. The third and fourth staves are also treble clef with a common time signature. The fifth and sixth staves are bass clef with a common time signature. The seventh and eighth staves are bass clef with a common time signature. The ninth and tenth staves are bass clef with a common time signature. The score includes various musical notations such as notes, rests, and dynamic markings. There are also some handwritten annotations in red ink.

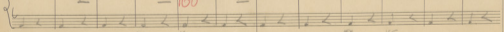
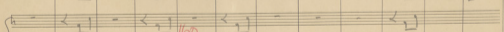
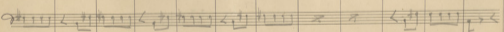
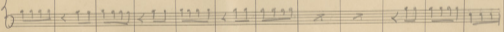
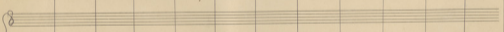
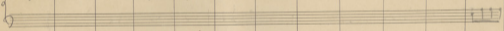
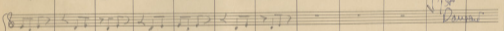
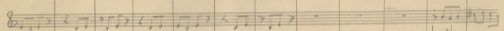
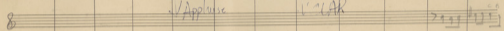
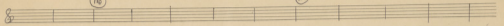
150



- to - ↓ Le danseur

(16)

(15)



160 160 160 160

- 1 -

(20)

↓ *leichte*

(10)

↓ *Motiv*
(12)

↓ *Warme
Fille*

150

Handwritten musical score for a piece titled "Warme Fille". The score is written on ten staves. The top staff is a grand staff with a treble clef and a circled "20". The second staff is a treble clef staff with a circled "10". The third and fourth staves are treble clef staves. The fifth staff is a bass clef staff with the handwritten instruction "Mando - light". The sixth and seventh staves are treble clef staves. The eighth staff is a bass clef staff with the handwritten instruction "Sanctus F". The ninth and tenth staves are grand staves with a circled "170". The score includes various musical notations such as notes, rests, and dynamic markings. There are also some handwritten annotations in red ink, including "150" and "170".

12 -
↓ *Moderato*

La Pista
Gu. Faust

Group applauding (135) (140)

Handwritten musical score for piano and orchestra. The score includes a piano part with treble and bass clefs, and an orchestral part with woodwinds, strings, and percussion. The piano part features a melodic line with slurs and accents, while the orchestra provides harmonic support with chords and rhythmic patterns. The score is marked with measures 135, 140, 150, and 170.

135

140

150

170

190

(45)

~~WDA~~

~~Pizzicato~~

(50)

~~S~~

A handwritten musical score on aged, yellowed paper. The score consists of approximately 10 staves. The top staff is a single line with a treble clef, containing several measures of rests and some handwritten markings. Below it are several staves with musical notation, including notes, stems, and beams. The notation is somewhat dense and appears to be a complex piece. There are several red annotations: a '2.5' written in red ink on the right side of the middle staves, and a '200' written in red ink near the bottom right. The paper shows signs of wear, with some staining and a torn edge on the left side. At the top, there are some crossed-out markings and circled numbers: '(45)', '~~WDA~~', '~~Pizzicato~~', '(50)', and '~~S~~'. The bottom of the page has some faint markings that look like '45', '45', '45', '45', '45', '45', '45', '45', '45', '45'.

