

Handwritten musical notation on a single staff, featuring rhythmic patterns and notes.

Handwritten musical notation on a single staff, featuring rhythmic patterns and notes.

Handwritten musical notation on a single staff, featuring rhythmic patterns and notes.

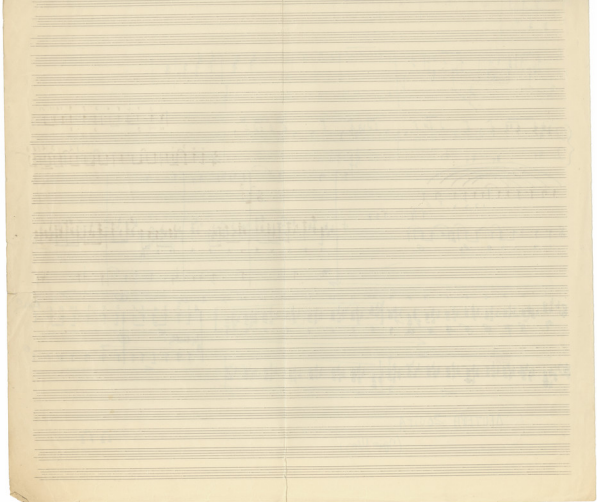
Handwritten musical notation on a single staff, featuring rhythmic patterns and notes.

Handwritten musical notation on a single staff, featuring rhythmic patterns and notes.

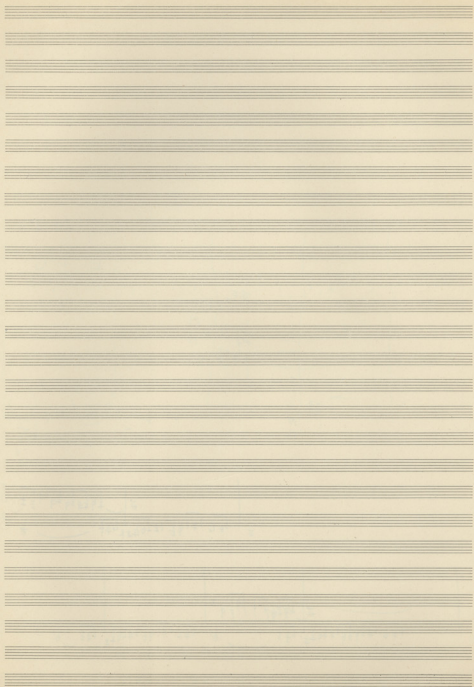
Handwritten musical notation on a single staff, featuring rhythmic patterns and notes.

DEUTERH ZOVITA  
(Opus 147)

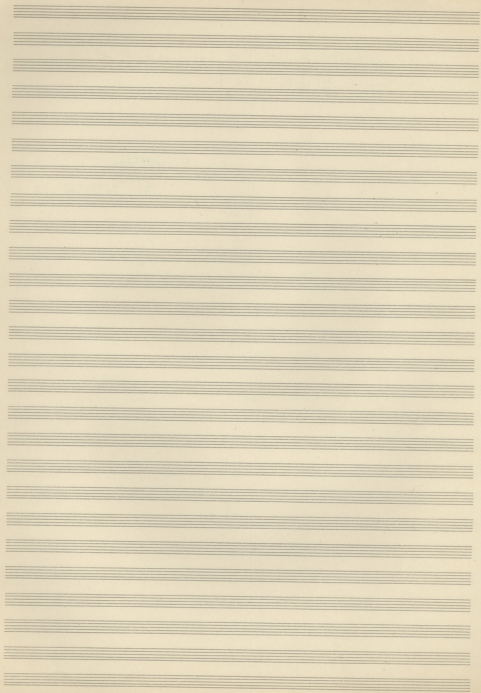
12 12

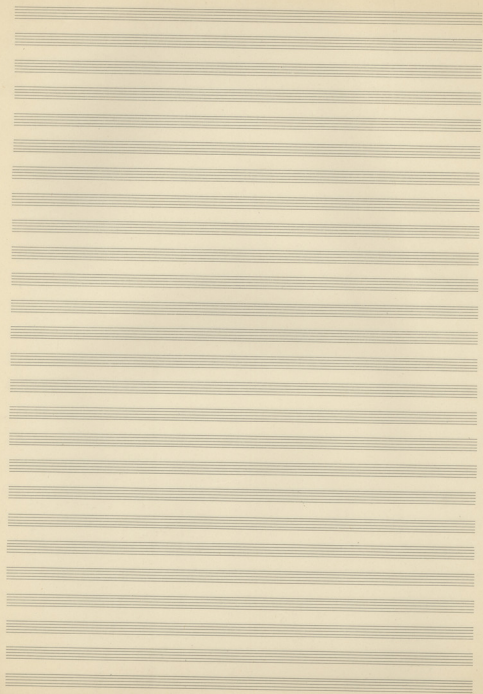


PARIS '50









**F**

**F**

Handwritten musical notation, first system. It consists of two staves. The upper staff is a treble clef with a key signature of one flat (B-flat) and a time signature of 8/8. The lower staff is a bass clef with a key signature of one flat and a time signature of 8/8. The music features a complex rhythmic pattern with many beamed notes and rests.

Handwritten musical notation, second system. It consists of two staves. The upper staff is a treble clef with a key signature of one flat and a time signature of 8/8. The lower staff is a bass clef with a key signature of one flat and a time signature of 8/8. The music continues with complex rhythmic patterns and includes some dynamic markings.

Handwritten musical notation, third system. It consists of two staves. The upper staff is a treble clef with a key signature of one flat and a time signature of 8/8. The lower staff is a bass clef with a key signature of one flat and a time signature of 8/8. The music continues with complex rhythmic patterns and includes some dynamic markings.

Handwritten musical notation, fourth system. It consists of two staves. The upper staff is a treble clef with a key signature of one flat and a time signature of 8/8. The lower staff is a bass clef with a key signature of one flat and a time signature of 8/8. The music continues with complex rhythmic patterns and includes some dynamic markings.

Handwritten musical notation, fifth system. It consists of two staves. The upper staff is a treble clef with a key signature of one flat and a time signature of 8/8. The lower staff is a bass clef with a key signature of one flat and a time signature of 8/8. The music continues with complex rhythmic patterns and includes some dynamic markings.

Handwritten musical notation, sixth system. It consists of two staves. The upper staff is a treble clef with a key signature of one flat and a time signature of 8/8. The lower staff is a bass clef with a key signature of one flat and a time signature of 8/8. The music continues with complex rhythmic patterns and includes some dynamic markings.

Handwritten musical notation, seventh system. It consists of two staves. The upper staff is a treble clef with a key signature of one flat and a time signature of 8/8. The lower staff is a bass clef with a key signature of one flat and a time signature of 8/8. The music continues with complex rhythmic patterns and includes some dynamic markings.

Middleman's work - of southern sincerity

Handwritten musical notation, first system. It consists of two staves. The top staff is in 3/4 time and contains a melodic line with various notes and rests. The bottom staff is in 4/4 time and contains a bass line with notes and rests. A dynamic marking  $\beta$  is present at the end of the first staff.

Handwritten musical notation, second system. It consists of two staves. The top staff is in 3/4 time and contains a melodic line with notes and rests. The bottom staff is in 4/4 time and contains a bass line with notes and rests.

Handwritten musical notation, third system. It consists of two staves. The top staff is in 3/4 time and contains a melodic line with notes and rests. The bottom staff is in 4/4 time and contains a bass line with notes and rests. A dynamic marking  $\beta$  is present at the end of the first staff.

Handwritten musical notation, fourth system. It consists of two staves. The top staff is in 3/4 time and contains a melodic line with notes and rests. The bottom staff is in 4/4 time and contains a bass line with notes and rests. There are some markings and symbols in this system, including a large 'X' and some handwritten notes.

# 2. ЗОВИТА

Handwritten musical notation for the first system, including a treble clef, a key signature of one flat, and a melody line with notes and rests.

Handwritten musical notation for the second system, featuring a treble clef and a melody line with notes and rests.

Handwritten musical notation for the third system, showing a treble clef and a complex melody line with many notes.

Handwritten musical notation for the fourth system, including a treble clef and a bass clef with notes and rests.

Handwritten musical notation for the fifth system, featuring a treble clef and a bass clef with notes and rests, and a section marked 'A'.

Handwritten musical notation for the sixth system, including a treble clef and a bass clef with notes and rests.

Handwritten musical score for the first system, featuring staves for Flute (Fl), Oboe (Ob), Clarinet (Cl), Bassoon (Fg), and Cello/Double Bass (Cb). The music includes various notes, rests, and dynamic markings such as *f* and *mf*. A section marked *I. II* is indicated.

Handwritten musical score for the second system, featuring staves for Trumpet (Tr), Trombone (T), Baritone (B), Bassoon (Fg), and Cello/Double Bass (Cb). The music includes various notes, rests, and dynamic markings such as *f* and *mf*. A section marked *I. II* is indicated.

Handwritten musical score for the third system, featuring staves for Flute (Fl), Oboe (Ob), Clarinet (Cl), Bassoon (Fg), and Cello/Double Bass (Cb). The music includes various notes, rests, and dynamic markings such as *f* and *mf*. A section marked *I. III* is indicated.

Handwritten musical score for the fourth system, featuring staves for Trumpet (Tr), Trombone (T), Baritone (B), Bassoon (Fg), and Cello/Double Bass (Cb). The music includes various notes, rests, and dynamic markings such as *f* and *mf*. A section marked *I. III* is indicated. Handwritten notes "Pizz Solo" and "Solo" are present on the right side of the page.

dr p-----

I 8

II 8

III 8

IV 7

V 7

Com = 8 4

dr p-----

I Gus. id

pp

V-I 8

II 8

III 8

IV 8

V 8

VI 8

Fug 7:

Com 8 7

I 8

II 8

III 8

IV 8

V 8

VI 8





Handwritten musical score for the first system, featuring the following parts and markings:

- Fl**: Flute part with a dynamic marking of  $<$ .
- ob**: Oboe part with a dynamic marking of  $<$ .
- Cl**: Clarinet part with a dynamic marking of  $<$ .
- Fg**: Bassoon part with dynamic markings  $mf$  and  $mf$ .
- Fag**: Contrabassoon part with dynamic markings  $f$  and  $p$ .
- Cor**: Horn part with dynamic markings  $f$  and  $mf$ .
- Str**: String section with dynamic markings  $mf$  and  $mf$ .

Handwritten musical score for the second system, featuring the following parts and markings:

- Rob**: Trombone part with dynamic markings  $mf$  and  $mf$ .
- Cl**: Clarinet part with dynamic markings  $mf$  and  $mf$ .
- Fg**: Bassoon part with dynamic markings  $mf$  and  $mf$ .
- Fag**: Contrabassoon part with dynamic markings  $mf$  and  $mf$ .
- Cor**: Horn part with dynamic markings  $mf$  and  $mf$ .
- III Trp**: Trumpet part with dynamic markings  $mf$  and  $mf$ .
- Yo II**: Trombone part with dynamic markings  $mf$  and  $mf$ .
- Alc**: Trombone part with dynamic markings  $mf$  and  $mf$ .
- Vc**: Violoncello part with dynamic markings  $mf$  and  $mf$ .
- Cb**: Contrabass part with dynamic markings  $mf$  and  $mf$ .

Handwritten musical score for a large ensemble. The score is organized into systems, with each system containing staves for different instruments or voices. The notation includes notes, rests, and dynamic markings.

**Instrumentation and Staff Labels:**

- Flute (Fl)
- Oboe (Ob)
- Clarinet (Cl)
- Bassoon (Bs)
- Trumpet (Trp)
- Cor (Co)
- Violin (Viol)
- II (Violin II)
- Alto Saxophone (Alto Sax)
- Tenor Saxophone (Tenor Sax)
- Baritone Saxophone (Baritone Sax)
- French Horn (Fr)
- Euphonium (Eu)
- Tuba (Tu)
- Drum (Dr)
- Cymbal (Cy)
- Triangle (Tri)
- Snare Drum (Sn)
- Bass Drum (Bd)
- Timpani (Tm)
- Conductor (Con)
- Violoncello (Vcl)
- Double Bass (Cb)

**Key Features and Annotations:**

- Dynamic Markings:** *f* (forte), *ff* (fortissimo), *mf* (mezzo-forte), *ffz* (fortissimo zando).
- Tempo/Character Markings:** *Cam* (Cantabile), *Trp* (Trumpet).
- Performance Indications:** *ffz* (written below the bottom staves), *ffz* (written above the bottom staves).
- Handwritten Notes:** A large handwritten mark resembling a stylized 'Z' or 'S' is present on the left side of the score, spanning several staves.
- Handwritten Signature:** A signature is visible on the right side of the page, near the top.



LYRISCHE SUITE

Alban Berg

*♩ = 100 (Tempo 2)*

1 2 3 4 5 6 7 8 9 10



Handwritten musical score on aged paper, page 10. The score consists of seven systems of staves. The first system has a circled '1' above the first measure. The second system has circled '30' and '4' below measures 3 and 4 respectively, and a large scribble above measures 5-7. The third system has a circled '5' below the first measure. The fourth system has circled '1', '2', '3', and '10' below measures 1, 2, 3, and 4 respectively. The fifth system has circled '4' below the first measure. The sixth system has circled '1' below the first measure. The seventh system has circled '1' below the first measure. The paper is yellowed and has irregular edges.

Handwritten musical notation on a single staff, including a treble clef, a key signature of one sharp (F#), and a 2/4 time signature. The notation consists of four measures of music with various notes and rests.

Handwritten musical notation on a single staff, including a bass clef and a 2/4 time signature. The notation consists of two measures of music with various notes and rests.

Multiple empty musical staves on the page, arranged in a vertical column, providing space for further musical notation.





Handwritten musical score for the first system, featuring a large bracketed section for woodwinds and strings.

**Flute (Fl):**  $\text{Fl } \flat > \uparrow \uparrow \uparrow \uparrow \uparrow \uparrow \uparrow \uparrow$

**Oboe (Ob):**  $\text{Ob } \flat > \uparrow \uparrow \uparrow \uparrow \uparrow \uparrow \uparrow \uparrow$

**Clarinet (Cl):**  $\text{Cl } \flat > \uparrow \uparrow \uparrow \uparrow \uparrow \uparrow \uparrow \uparrow$

**Contra Bassoon (Con Bsn):**  $\text{Con Bsn } \flat > \uparrow \uparrow \uparrow \uparrow \uparrow \uparrow \uparrow \uparrow$

**Violin I (Vcln I):**  $\text{Vcln I } \flat > \uparrow \uparrow \uparrow \uparrow \uparrow \uparrow \uparrow \uparrow$

**Violin II (Vcln II):**  $\text{Vcln II } \flat > \uparrow \uparrow \uparrow \uparrow \uparrow \uparrow \uparrow \uparrow$

**Viola (Vcln III):**  $\text{Vcln III } \flat > \uparrow \uparrow \uparrow \uparrow \uparrow \uparrow \uparrow \uparrow$

**Cello (Vcln IV):**  $\text{Vcln IV } \flat > \uparrow \uparrow \uparrow \uparrow \uparrow \uparrow \uparrow \uparrow$

**Double Bass (Cb):**  $\text{Cb } \flat > \uparrow \uparrow \uparrow \uparrow \uparrow \uparrow \uparrow \uparrow$

**Other parts:** Flg, 4 Flp, Tpt, Timp, Tam-tam, Vcell, Cb.

Handwritten musical score for the second system, including a large section for strings and woodwinds.

**Clarinet (Cl):**  $\text{Cl } \flat > \uparrow \uparrow \uparrow \uparrow \uparrow \uparrow \uparrow \uparrow$

**Flute (Fl):**  $\text{Fl } \flat > \uparrow \uparrow \uparrow \uparrow \uparrow \uparrow \uparrow \uparrow$

**Oboe (Ob):**  $\text{Ob } \flat > \uparrow \uparrow \uparrow \uparrow \uparrow \uparrow \uparrow \uparrow$

**Contra Bassoon (Con Bsn):**  $\text{Con Bsn } \flat > \uparrow \uparrow \uparrow \uparrow \uparrow \uparrow \uparrow \uparrow$

**Violin I (Vcln I):**  $\text{Vcln I } \flat > \uparrow \uparrow \uparrow \uparrow \uparrow \uparrow \uparrow \uparrow$

**Violin II (Vcln II):**  $\text{Vcln II } \flat > \uparrow \uparrow \uparrow \uparrow \uparrow \uparrow \uparrow \uparrow$

**Viola (Vcln III):**  $\text{Vcln III } \flat > \uparrow \uparrow \uparrow \uparrow \uparrow \uparrow \uparrow \uparrow$

**Cello (Vcln IV):**  $\text{Vcln IV } \flat > \uparrow \uparrow \uparrow \uparrow \uparrow \uparrow \uparrow \uparrow$

**Double Bass (Cb):**  $\text{Cb } \flat > \uparrow \uparrow \uparrow \uparrow \uparrow \uparrow \uparrow \uparrow$

**Other parts:** Cam, Tpt, Vcln V, Timp, Tam, Flg, Clav, Fg, Vcln VI, Vcln VII, Vcln VIII, Vcln IX, Vcln X, Vcln XI, Vcln XII, Vcln XIII, Vcln XIV, Vcln XV, Vcln XVI, Vcln XVII, Vcln XVIII, Vcln XIX, Vcln XX, Vcln XXI, Vcln XXII, Vcln XXIII, Vcln XXIV, Vcln XXV, Vcln XXVI, Vcln XXVII, Vcln XXVIII, Vcln XXIX, Vcln XXX, Vcln XXXI, Vcln XXXII, Vcln XXXIII, Vcln XXXIV, Vcln XXXV, Vcln XXXVI, Vcln XXXVII, Vcln XXXVIII, Vcln XXXIX, Vcln XL, Vcln XLI, Vcln XLII, Vcln XLIII, Vcln XLIV, Vcln XLV, Vcln XLVI, Vcln XLVII, Vcln XLVIII, Vcln XLIX, Vcln L, Vcln LI, Vcln LII, Vcln LIII, Vcln LIV, Vcln LV, Vcln LVI, Vcln LVII, Vcln LVIII, Vcln LIX, Vcln LX, Vcln LXI, Vcln LXII, Vcln LXIII, Vcln LXIV, Vcln LXV, Vcln LXVI, Vcln LXVII, Vcln LXVIII, Vcln LXIX, Vcln LXX, Vcln LXXI, Vcln LXXII, Vcln LXXIII, Vcln LXXIV, Vcln LXXV, Vcln LXXVI, Vcln LXXVII, Vcln LXXVIII, Vcln LXXIX, Vcln LXXX, Vcln LXXXI, Vcln LXXXII, Vcln LXXXIII, Vcln LXXXIV, Vcln LXXXV, Vcln LXXXVI, Vcln LXXXVII, Vcln LXXXVIII, Vcln LXXXIX, Vcln XL.

Handwritten musical score for the first system, including parts for Clarinet (Cl), Bassoon (Fg), Cornet (Cm), and Trumpet (Tbn). The score includes notes, rests, and dynamic markings such as *rit* and *rit. decresc.*

Handwritten musical score for the second system, including parts for Trombone (Tbn), Violin I (Vn I), Violin II (Vn II), Viola (Va), and Cello (Cs). It features notes, rests, and dynamic markings like *rit* and *rit. decresc.*

Handwritten musical score for the third system, including parts for Flute (Fl), Piccolo (Pic), Bassoon (Fg), and Clarinet (Cl). It includes notes, rests, and dynamic markings such as *rit* and *rit. decresc.*

Handwritten musical score for the fourth system, including parts for Violin I (Vn I), Violin II (Vn II), and Viola (Va). It features notes, rests, and dynamic markings like *rit* and *rit. decresc.*

Handwritten musical notation for the first system, including staves for Flute, Clarinet, Bassoon, and Cello/Double Bass.

Handwritten musical notation for the second system, including staves for Piano, Violin I, Violin II, and Viola.

Handwritten musical notation for the third system, including staves for Bassoon, Clarinet, and Bass.

Handwritten musical notation for the fourth system, including staves for Flute, Clarinet, Bassoon, and Violin I.

Empty musical staves at the bottom of the page.

- 5 -

*gr*

Fl { 8 } 4 7 7 7 7  
 Pic { 8 } 7 7 7 7 7  
 Ob { 8 } 7 7 7 7 7  
 Cl { 8 } 7 7 7 7 7  
 Fg { 8 } 7 7 7 7 7  
 Cym { 8 } 7 7 7 7 7  
 Trip { 8 } 7 7 7 7 7  
 Tom { 8 } 7 7 7 7 7  
 maraca non dir  
 Vcl I { 8 } 7 7 7 7 7  
 Vcl II <sup>non dir</sup> { 8 } 7 7 7 7 7  
 Alu <sup>non dir</sup> { 8 } 7 7 7 7 7  
 Vcl <sup>non dir</sup> { 8 } 7 7 7 7 7  
 Cb { 8 } 7 7 7 7 7

Fl { 8 } 7 7 7 7 7 | Vcl I <sup>meno</sup> { 8 } 7 7 7 7 7 | Piano 6  
 Ob { 8 } 7 7 7 7 7 | Vcl II <sup>meno</sup> { 8 } 7 7 7 7 7 |  
 Cl { 8 } 7 7 7 7 7 | Vcl <sup>meno</sup> { 8 } 7 7 7 7 7 | Amp  
 Vcl I <sup>meno</sup> { 8 } 7 7 7 7 7 |  
 Vcl II <sup>meno</sup> { 8 } 7 7 7 7 7 |  
 Vcl <sup>meno</sup> { 8 } 7 7 7 7 7 |  
 Cb <sup>meno</sup> { 8 } 7 7 7 7 7 |

Handwritten musical score for the first system, including parts for Flute (Flg), Violin (Vc), Viola (Va), Cello (C), Double Bass (db), and Trombone (Tuba). The notation includes notes, rests, and dynamic markings such as *mf* and *dim*. The word "time" is written below the C and db staves.

Handwritten musical score for the second system, featuring a Cornet (Corn) part with notes and rests.

Handwritten musical score for the third system, featuring a Tuba (Tub) part with notes and rests.

Handwritten musical score for the fourth system, featuring a Trumpet (Tup) part with notes and rests.

Handwritten musical score for the fifth system, featuring a Cornet (Corn) part with notes and rests.

Handwritten musical score for the sixth system, featuring a Tuba (Tub) part with notes and rests.

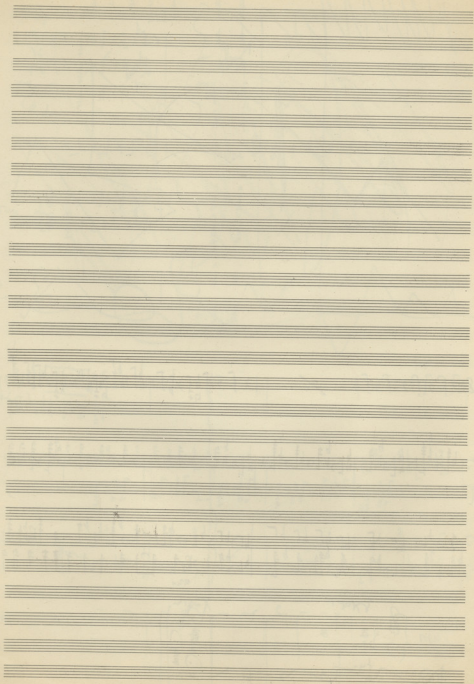
Handwritten musical score for the seventh system, featuring parts for Violoncello (Vcllo) and Contrabass (Cn. b.).

Handwritten musical score for the eighth system, featuring a Time (Time) part with notes and rests.

Handwritten musical score for the ninth system, featuring a Bass (Ba) part with notes and rests.









Xopiko T

BARNARD

Τραγούδι 5  
ΟΙ ΠΑΝΟΙ ΤΗΣ ΠΑΡΑΤΑΞΗΣ  
ΕΚΑΘΟΪΝ ΧΟΡΩΝ

Τραγούδι 5  
ΟΜ

15  
MM

8/8

8/8

8/8

8/8

8/8

A 8/8

B 8/8

C 8/8

D 8/8

E 8/8

F 8/8

G 8/8

H 8/8

I 8/8

J 8/8

K 8/8

L 8/8

M 8/8

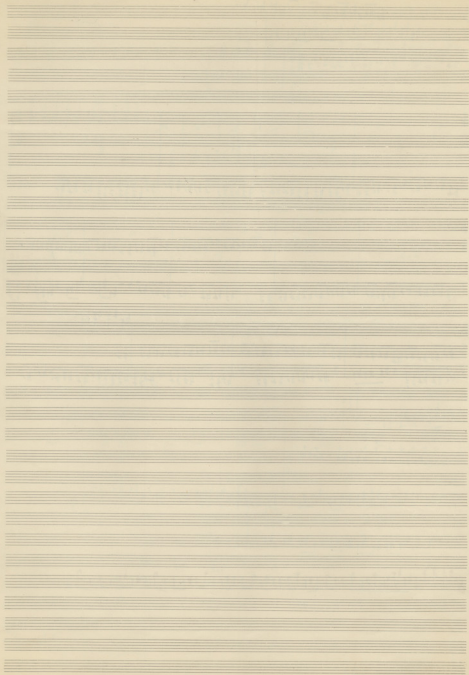
N 8/8

O 8/8

P 8/8

Q 8/8







CHORUS

THEODORAKIS  
SUITE N° 2

Pastorale No 5

VI

Poco più mosso

4

1

5

2

3

obc, #1 2 1 #1 2 1 #1 2 1 4 + #1

mf 3 F

Soprano 1

Soprano 2

Alti

Tenori

Bassi

Lyrics: FEV-GIL-PA-N-STIN A-MI-XI-GIL-UM MA-LE MOR FEV-GIL-PA-N-STIN A-MI-XI-GIL-UM MA-LE MOR A-MI-XI-GIL-UM MOR-GIL-UM MA-LE MOR

5 6

Sops 1

Sops 2

Alti

Tenori

Bassi

Lyrics: E-CRIS-A-MI-XI-GIL-UM MA-GIL-UM MA-LE MOR FEV-GIL-PA-N-STIN A-MI-XI-GIL-UM MA-LE MOR FEV-GIL-PA-N-STIN

2.5

Soprano  
 Alto  
 Tenor  
 Bass

FEV-GI-PA-NO-SIN A-NI-XI-GI-MOU-KA-LE-MOU FEV-GI-PA-NO-SIN A-NI-XI-GI-MOU-KA-LE-MOU A-NI-XI-MOU-GI-KA-TO-SIN-POU-POU-POU

[5] [6]

Soprano 1  
 Soprano 2  
 Alto  
 Tenor  
 Bass

E-CHIS- A-NI-XI-MOU-GI-KA-GI-PA-SIN-POU-POU E-CHIS FEV-GI-PA-NO-SIN A-NI-XI-GI-MOU-KA-LE-MOU FEV-GI-PA-NO-SIN

FF [7]

Soprano 1  
 Soprano 2  
 Alto  
 Tenor  
 Bass

FACE T

FEV-GI-PA-NO-SIN- /  
 A-NI-XI- GI-E-MOU-KA- /  
 LE-MOU- /  
 A-NI-XI-MOU-GLI- /  
 KA-GI-PA-SIN-POU-POU-POU- /  
 ECHIS- /

You are going in the Spring  
 my son, my dearest / My sweet  
 Spring that will never return

KOSTAS VARNALIS

150