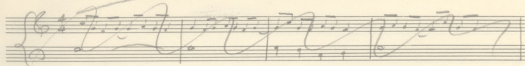


Πένες ούς Κέρου

1978-9



Handwritten musical notation for the first system, including a treble clef and a bass clef. The treble clef part contains notes with stems and rests, with the word "TEN" written above the first measure. The bass clef part contains notes with stems and rests, with the word "ALT" written above the first measure. Below the bass clef, there are two lines of Greek text: "το Αϊό-δο-Τό-" and "το Αϊό-δο-Τό-".

Handwritten musical notation for the second system, including a treble clef and a bass clef. The treble clef part contains notes with stems and rests, with the word "TEN" written above the first measure. The bass clef part contains notes with stems and rests, with the word "ALT" written above the first measure. Below the bass clef, there are two lines of Greek text: "το Αϊό-δο-Τό-" and "το Αϊό-δο-Τό-".

53