



Sia - pi ta tou eni-vou ti. xi-krouxi. Xi. Aa

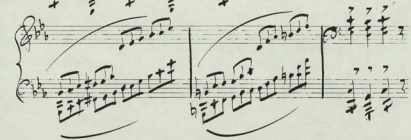
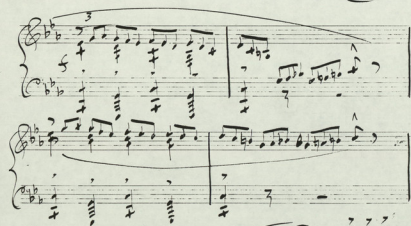
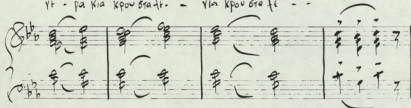
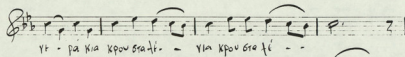
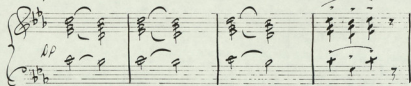
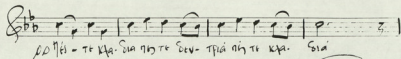
hla - pi ta ta si vpa sou ta toi. xi tu xi.

- yi-pi-sa apo la xai nro sou. vo.. To ya va xpi bi kou to na.

Si - e - kai kai xi-tai *Rallent dim*

Handwritten musical score for piano and voice, measures 1-10. The score is written in 4/4 time and features a key signature of one flat (B-flat). The piano part is written in a grand staff (treble and bass clefs), and the voice part is written in a single treble clef. The piano accompaniment includes chords, arpeggios, and a melodic line in the right hand. The voice part consists of a single melodic line with lyrics written below the notes. The lyrics are: "c ce s ce u do". The score is marked with various musical notations, including slurs, accents, and dynamic markings such as *pp* (pianissimo) and *mf* (mezzo-forte). The first system contains measures 1-4, the second system contains measures 5-8, and the third system contains measures 9-10. The score ends with a double bar line and repeat dots.

Handwritten musical score for piano, measures 11-14. The score is written in a grand staff (treble and bass clefs) and continues the key signature of one flat (B-flat). The piano part features a complex texture with multiple voices in both hands, including arpeggiated figures and chords. The score is marked with various musical notations, including slurs, accents, and dynamic markings such as *mf* (mezzo-forte). The first system contains measures 11-12, the second system contains measures 13-14, and the score ends with a double bar line and repeat dots.



5 ηες τ'δ. τε - βε νrus δ-τε βε - νrus ηού

- ηε σε ονι - - πα-χι ονι - πα-χι τα. βω

ηι- υδ ρρ ηριν ητ υυ- χι- ονι ητ ητ. σε ηι- ηι

σε τ'δ - νο-τα τιν ηα νοι - - ηη ηη ηα νοι - -

Tempo primo

Handwritten musical notation on a single staff. The key signature is two flats (B-flat and E-flat). The time signature is common time (C). The notation includes a fermata over the first measure, followed by a double bar line and a new measure. The lyrics "Moi ne pi- te ven" are written below the staff.

Handwritten musical notation on a grand staff (treble and bass clefs). The key signature is two flats. The time signature is common time. The notation includes a fermata over the first measure, followed by a double bar line and a new measure. The lyrics "Tempo primo" are written above the staff. The music features complex rhythmic patterns with many beamed notes.

Handwritten musical notation on a single staff. The key signature is two flats. The time signature is common time. The notation includes a fermata over the first measure, followed by a double bar line and a new measure. The lyrics "tu. vo vras kai Kap-te Pri kai Kap-te Pti no" are written below the staff. The word "Rall" is written below the staff.

Handwritten musical notation on a grand staff. The key signature is two flats. The time signature is common time. The notation includes a fermata over the first measure, followed by a double bar line and a new measure. The word "Rall" is written above the staff. The music features complex rhythmic patterns with many beamed notes.

Handwritten musical notation on a single staff. The key signature is two flats. The time signature is common time. The notation includes a fermata over the first measure, followed by a double bar line and a new measure. The lyrics "Yi. vras" are written below the staff.

Handwritten musical notation on a grand staff. The key signature is two flats. The time signature is common time. The notation includes a fermata over the first measure, followed by a double bar line and a new measure. The music features complex rhythmic patterns with many beamed notes.

Handwritten musical notation on a single staff. The key signature is two flats. The time signature is common time. The notation includes a fermata over the first measure, followed by a double bar line and a new measure.

Handwritten musical notation on a grand staff. The key signature is two flats. The time signature is common time. The notation includes a fermata over the first measure, followed by a double bar line and a new measure. The music features complex rhythmic patterns with many beamed notes.