

III

J. = 48

PREMIERE FOIS { E. Δο. KI. MOUN- DE. BRos. STON. Po. TA
E. Δο. KI. MOUN- DE. PLA. I. STO. NE

SECONDE FOIS { PRO. I. PRO. I. PRO. I. TAN. POU- PE
E. Δο. KI. MOUN. DE STO MI. KRO. MI

J. = 48

pp

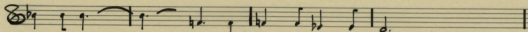
cease - - - dim. - - - p - - - v

Mo. - - - E. Δο. STIN. OCH. BI. TIN. PA. LIA. TO.
Ro. - - - PA. NO. SE. PEN. DE SI. NE. FA. SE.
SAN. - - - TA. PEN. DE. TA. MI. KRA. MI. KRA. VA.
KROU. LI. KRE. VA TA. KI. TOUS - - - E. Δο. STIN. OCH. BI. TOU. NE. ROU. NA.

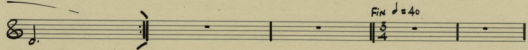
cease - - - f dim. - - - p

{ PRA. SI. NO. PO. TA. MI. PEN. DE. MI. KRA. NAF-
{ PEN. BOR. YES. CHOR. TA. RI. PEN. DE. NAF. TA. KIA
{ BIA. NA. KI. MI. BOU. NE. NA. MI. TA. NA. MOU
{ NI. MI. KRA. MOU. NA. NI. PEN. DE. NAF. TA. KIA

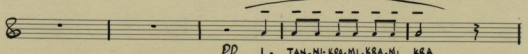
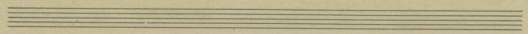
crac - - - F dim . . .



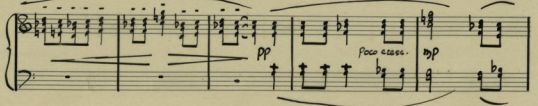
{ TO. POV-LA - PEN. PE. DIA TOU. KOS.
 { POV- GRA. PSAN - - STIN. A. MO. TO. NO. MA.
 { RI. ZOU- NE - TA. DEN. DRA STO. PO. TA.
 { PEN- DA- PLA - PE- DIA. DOU- FE- KIS- ME-



{ Mou.
 { Tous.
 { Mi.
 { NA.



pp I. TAN. MI. KRA. MI. KRA. MI. KRA



P

KI - TA-NE-PAN-PA XA-GRI PNA

pp

Detailed description: This system contains the first two staves of music. The top staff is a vocal line in treble clef with a key signature of one flat and a 2/4 time signature. It begins with a rest, followed by a melodic phrase starting on G4, moving to A4, Bb4, and C5. The bottom staff is a piano accompaniment in bass clef, consisting of a steady eighth-note accompaniment in the left hand and chords in the right hand. Dynamics include a piano (*P*) marking above the vocal line and a pianissimo (*pp*) marking above the piano accompaniment.

pp *pp*

I-TAN-MI-KRA-MI-KRA MI KRA - - - KI-TAN-SI LO-GI-SNE-NA.

P *P*

molto op. 760

Detailed description: This system contains the second two staves of music. The top staff continues the vocal line with a melodic phrase starting on G4, moving to A4, Bb4, and C5. The bottom staff continues the piano accompaniment with similar rhythmic patterns and chords. Dynamics include pianissimo (*pp*) markings above the vocal line and piano (*P*) markings above the piano accompaniment. The tempo marking *molto op. 760* is written below the piano staff.

P *mf*

TO-RA-KI-MOON-DE TO-RA-PIA-TA NA MOU-SI-ZJO PO-TA

Detailed description: This system contains the final two staves of music. The top staff concludes the vocal line with a melodic phrase starting on G4, moving to A4, Bb4, and C5. The bottom staff concludes the piano accompaniment with similar rhythmic patterns and chords. Dynamics include piano (*P*) and mezzo-forte (*mf*) markings above the vocal line.

Musical staff with vocal line and lyrics: MoS NA. NI. Tous-LE-i NA. NI. Tous To. PRA SI. No. Po.

Piano accompaniment for the first system, showing chords and bass line.

Musical staff with vocal line and lyrics: TA - - - ni

Piano accompaniment for the second system, including performance markings like *pp*, *smorz*, and *DA CAPO*.

DURE 5:20
TOTAL : 8 : 55

Empty musical staves at the bottom of the page.