

3 (A) (Ora ENZAS)

4 2 F

B

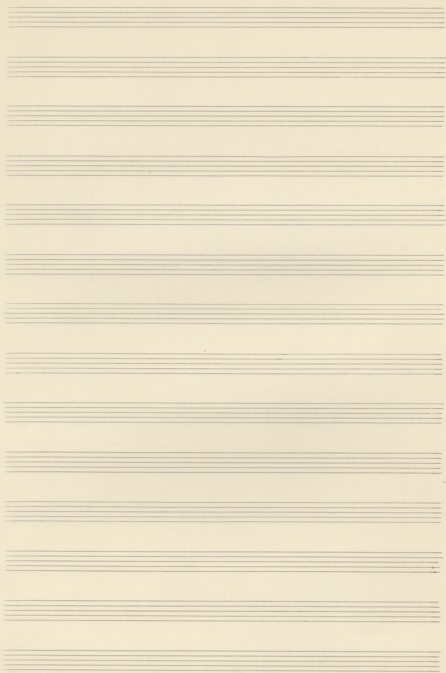
4 P F ENZAS

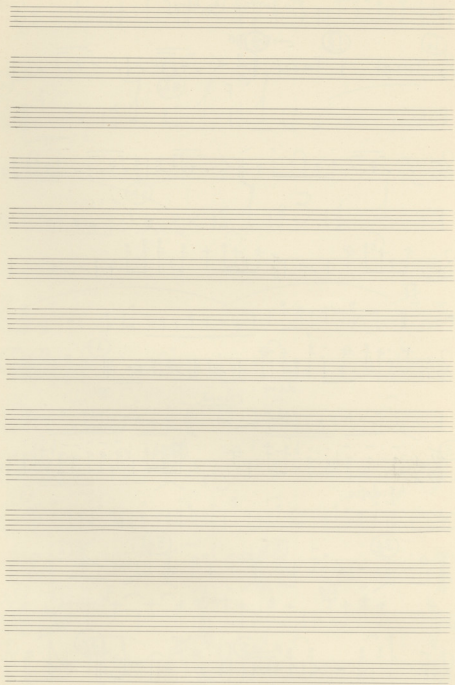
4

ENZAS

6 PIATTO

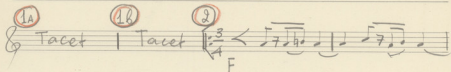
mf Simple

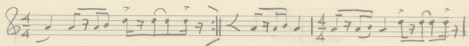


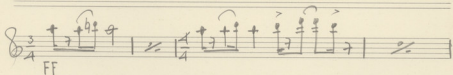


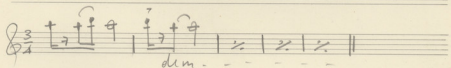
Obse

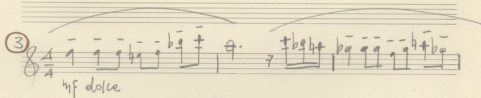
To Πιοφιβ. Της ΑΡΤΑΣ

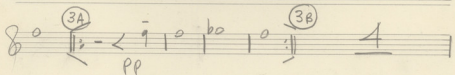
1A Tacet | 1B Tacet | 2 $\frac{3}{4}$ < 

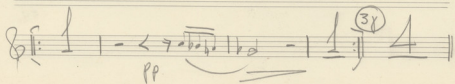
$\frac{3}{4}$ 

$\frac{3}{4}$ 

$\frac{3}{4}$ 

3 $\frac{3}{4}$ 

3A $\frac{3}{4}$ 

$\frac{3}{4}$ 

13-8-54
Zwinger des Radio

S
Andante

(4)

mf *aspcas*

(4A)

(4B)

(4C)

(5)

mf

Violin

no ③

Entra
f

Entra
f

Entra
f

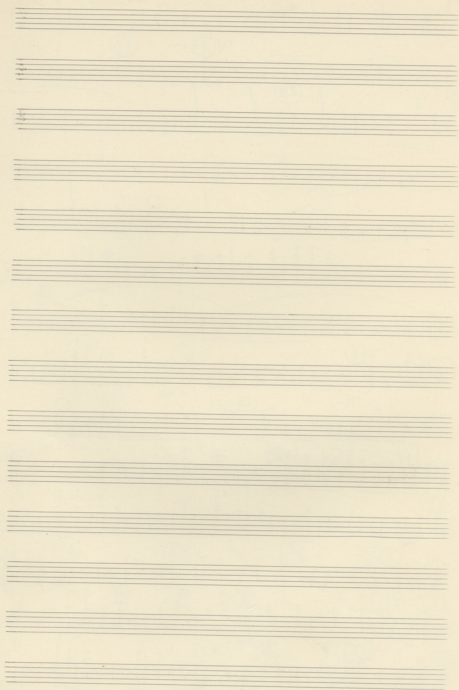
Entra
f

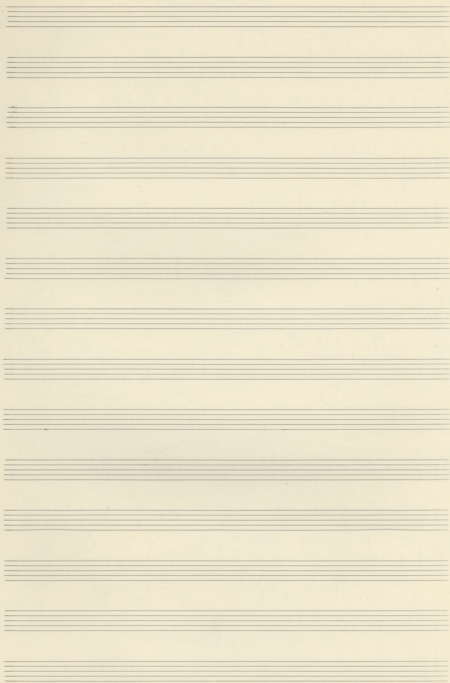
Entra
f

Entra
f

Handwritten scribbles and notes on the left margin.

Handwritten scribbles and notes on the right margin.





Capriccio in G#p

To Friedrich Wilhelm ABRAS

1A 1B 2

Tacet | Tacet | $\frac{3}{4}$ F $\frac{3}{4}$ $\frac{3}{4}$ $\frac{3}{4}$ $\frac{3}{4}$ $\frac{3}{4}$ $\frac{3}{4}$

3 3A 3B 3C

$\frac{3}{4}$ pp $\frac{3}{4}$ $\frac{3}{4}$ $\frac{3}{4}$ $\frac{3}{4}$ $\frac{3}{4}$ $\frac{3}{4}$

Andte

4

$\frac{3}{4}$ mf $\frac{3}{4}$ $\frac{3}{4}$ $\frac{3}{4}$ $\frac{3}{4}$

4A 4B

$\frac{3}{4}$ $\frac{3}{4}$ $\frac{3}{4}$ $\frac{3}{4}$

Handwritten musical notation for the first system, featuring treble and bass clefs, a key signature of two sharps, and a 3/4 time signature. It includes various rhythmic patterns, accidentals, and a circled '4r' marking.

5 (A) stacc

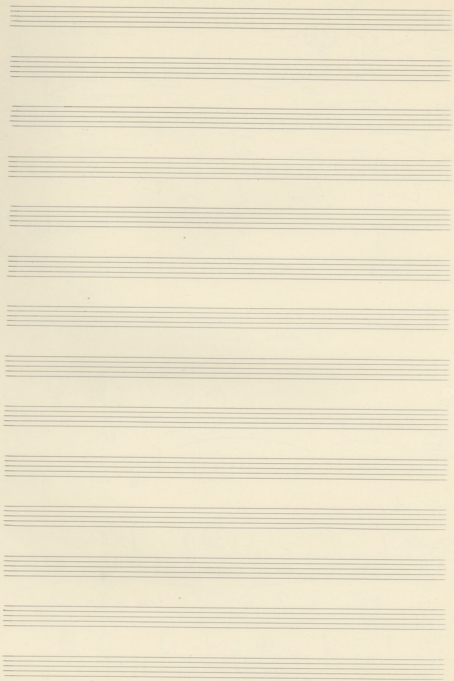
ENCLOS

Handwritten musical notation for the second system, starting with a circled '5' and '(A) stacc'. It includes a treble clef, a key signature of two sharps, and a 5/8 time signature. A blue box labeled 'ENCLOS' is present.

Handwritten musical notation for the third system, including a circled 'B' and a blue box labeled 'ENCLOS'.

Handwritten musical notation for the fourth system, featuring multiple systems with circled letters (A, B, C, D, E, Z) and various musical notations.

Empty musical staves at the bottom of the page.



Fagotto

To Giochi, Ten. Altra

1A

1B

p

2

F

dim.

3

3A

3B

3r

4

4A

4B

4r

p

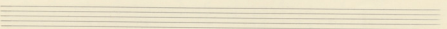
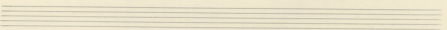
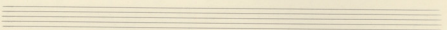
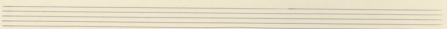
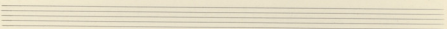
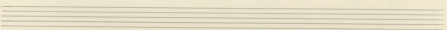
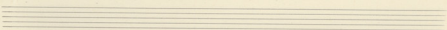
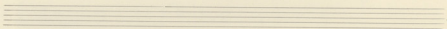
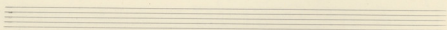
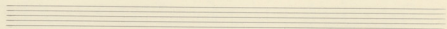
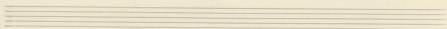
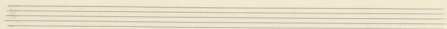
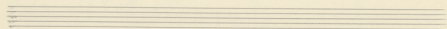
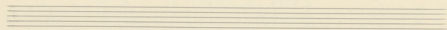
p

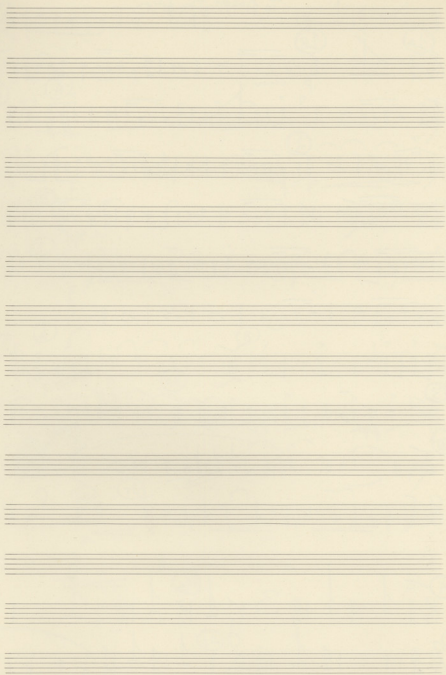
(5) (A) *Stacc*

Handwritten musical notation for three staves (5A, 5B, 5C) in treble clef, key of D major, and 5/8 time. The notation includes notes, rests, and dynamic markings such as *f*. The first staff (5A) ends with a boxed label $\square \nabla \Delta \Delta$. The second (5B) and third (5C) staves also end with boxed labels $\square \nabla \Delta \Delta$.

(6) *Cassa*

Handwritten musical notation for a single staff (6) in treble clef, key of D major, and 5/8 time. The notation includes notes, rests, and dynamic markings such as *mf*. The staff ends with the word *simile*.





CORNO I

To FIORELLINO ALFARO

1A

1B

p *con*

dim

3

3A

pp

3B

3r

4

4A

4B

4r

mf

p

(5) (A)

ENCAS

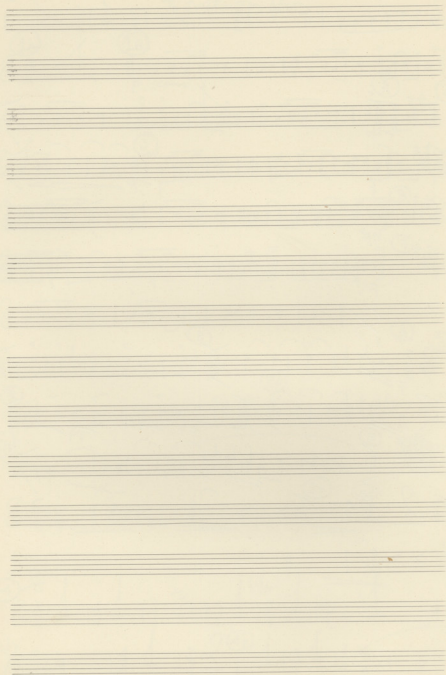
(B)

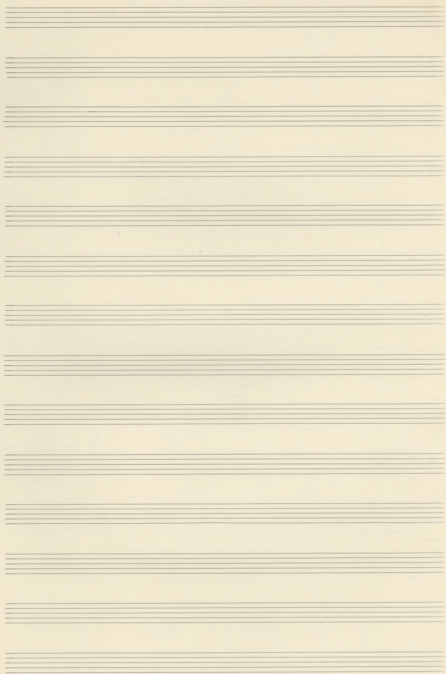
(F)

(6) (A) (B)

(E)

(Z)





CORNS II

To Frodo, To Galad

1A

1B

2

3

3A

3B

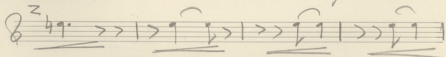
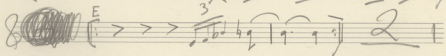
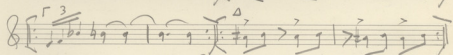
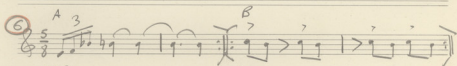
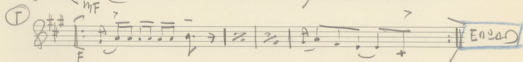
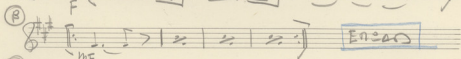
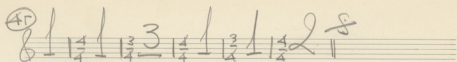
3r

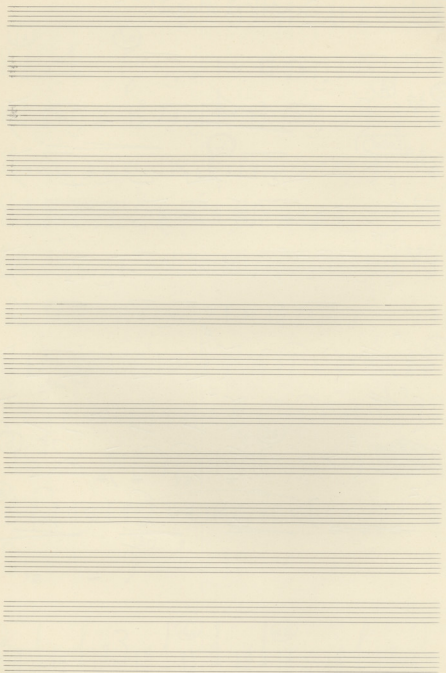
4

4A

4B

mf





Timpani

To TISHRI TAD ARA

①

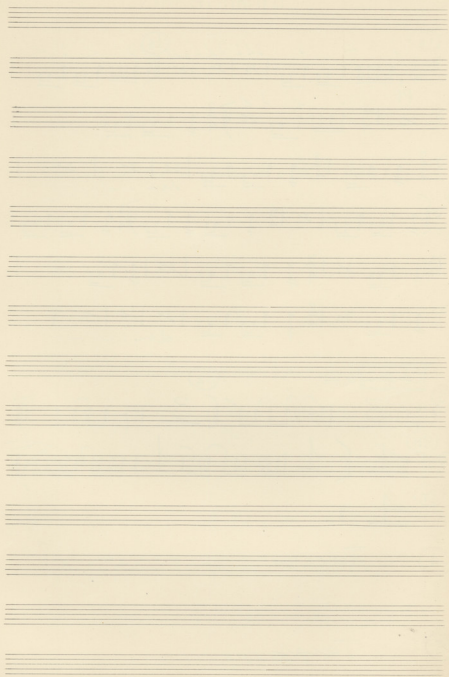
Handwritten musical score for Timpani, measures 1-6. The score is written on six staves. The first staff is marked with a circled '1A' and contains a treble clef, a 3/4 time signature, and notes with a *pp* dynamic marking. The second staff is marked with a circled '1B' and contains a treble clef, a 3/4 time signature, and notes with a *pp* dynamic marking. The third staff contains a treble clef, a 2/4 time signature, and notes with a *mf* dynamic marking. The fourth staff is marked with a circled '2' and contains a treble clef, a 3/4 time signature, and notes with a *mf* dynamic marking. The fifth staff contains a treble clef, a 3/4 time signature, and notes with a *mf* dynamic marking. The sixth staff contains a treble clef, a 3/4 time signature, and notes with a *mf* dynamic marking. The score includes various musical notations such as beams, slurs, and dynamic markings.

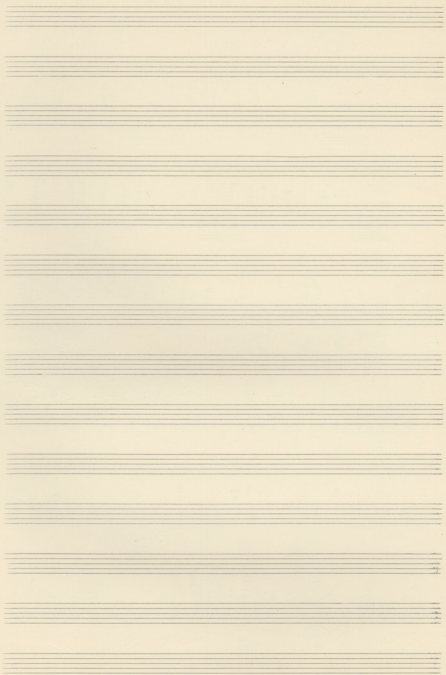
Campana in FA

Handwritten musical score for Campana in FA, measures 3A-3C. The score is written on three staves. The first staff is marked with a circled '3' and contains a treble clef, a 3/4 time signature, and notes with a *mf* dynamic marking. The second staff is marked with a circled '3B' and contains a treble clef, a 3/4 time signature, and notes with a *mf* dynamic marking. The third staff is marked with a circled '3C' and contains a treble clef, a 3/4 time signature, and notes with a *mf* dynamic marking. The score includes various musical notations such as beams, slurs, and dynamic markings.

④ Tacet

⑤ Tacet





Violino

To Tio P, Tns APTAS

1A 4/4 1B : Tacet :

2 F 5 7 6 6 0 6 6 6

6 6 6 6 6 6

F *gras*

8va 3 8va

3 *Larghetto* dolce p *Com* 3A pp

3B I b b b b b b

mp 3C 4 pp

Andte molto cresc.

(4) $\frac{8}{4}$
 mp

(4A)
tr

(4B)

(4C)

(5) $\frac{4}{4}$
Colda
 F

(B)

(r)
Engran

(G) $\frac{5}{8}$
 Legno $\frac{8}{8}$ *f* *simile*

