

ΔΕΥΤΕΡΟ ΧΟΡΙΚΟ

Handwritten musical notation for the first system, including a treble clef, a 3/4 time signature, and a key signature of one flat. The melody features a circled 'A' and a '5' above a triplet of notes. The lyrics are: Ένα βίβα τρία τέσσερα πέντε έξι. Κο ψεύδι κάρτα έρω πει κο

Handwritten musical notation for the second system, featuring a bass clef and a 3/4 time signature. The lyrics are: Τρίφυκο άτρακίω το

Handwritten musical notation for the third system, featuring a treble clef and a 3/4 time signature. The lyrics are: άτρακίω το

Handwritten musical notation for the fourth system, featuring a bass clef and a 3/4 time signature. The lyrics are: άτρακίω το

Handwritten musical notation for the fifth system, featuring a treble clef and a 3/4 time signature. The lyrics are: άτρακίω το

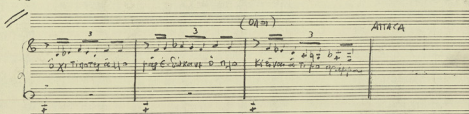
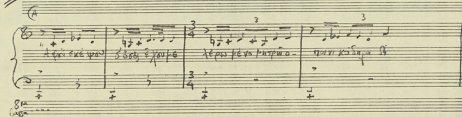
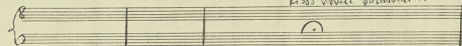
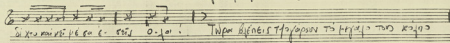
Handwritten musical notation for the sixth system, featuring a bass clef and a 3/4 time signature. The lyrics are: άτρακίω το

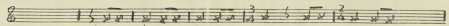
Handwritten musical notation for the seventh system, featuring a treble clef and a 3/4 time signature. The lyrics are: άτρακίω το

Handwritten musical notation for the eighth system, featuring a bass clef and a 3/4 time signature. The lyrics are: άτρακίω το

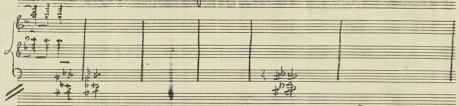
-10-

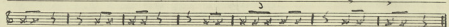
① Μήτριά φοι ποδάρια (Βραβίο)



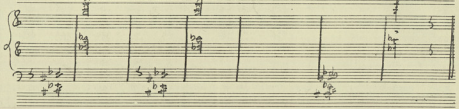


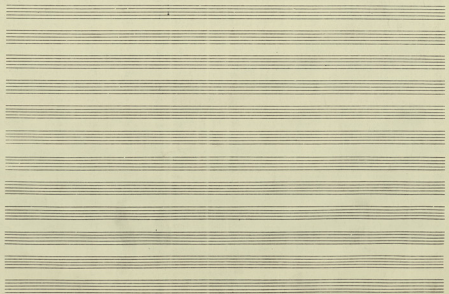
 Et xriste qui se des ad dex- te- ram pa- tris





 xriste qui se des ad dex- te- ram pa- tris





ΔΕΥΤΕΡΟ ΧΟΡΙΚΟ

Andante

3/4

Ενα σου τριη τρεσπαρενε ε φα Κο νε σου κωτο στω πι κω

3 3 3

Τρι φου κω α τσα φι κω το

5 3

Αυ τρεσπαρενε φα ρε φι κω φι κω το στω νε φου το κα βυ ηε τρεσπαρενε

3 3 3

Τρι φα τρι σου νε τρι φου κω φου κω φου κω

- 10 -
Δ Μήλαρ ταιρ πύρηνι (Ραχιά)

Σι χου κούρτι πέ σα ε - στίλ ο - γοι . Τίρην βίγνις ττο/ορσεν τσ τρτζε τος κούρτι
 κι σσά γιννεκ φσβουρην ...

Α
 Α φου σκε ψου βόβη σ' κούρτι χέρας πέ σα τρτζε - παρτι κί σσά φ
 1/4 3/4 3/4 3/4

(ΟΑρι)
 ΑΙΤΑΚΑ
 Ο χι τρτζε αέττο τρτζε - σκε σκε ο ηο κί σσά σ' τρτζε φρτζε πα

(NAME) (ESH) (EMA) (OAH)

3i e in fu a | ca p e g i in to | pa ca u p a | ca p a Bo i e to | x e pi

Musical notation for the first system, including a grand staff with piano and bass clefs and various chord symbols.

OAH ENAS OAH ENAS

Tob y Tob y Tob y Tob y Tob y | k e n e k i x u e t a e | Tob y Tob y k i j s h a r i t e s s

Musical notation for the second system, including a grand staff with piano and bass clefs and various chord symbols.

OAH (ENAS)

Bu u r o S u p r e | Tob y Tob y S i p a | f u e g o d u r a t o d o s u k a f o

Musical notation for the third system, including a grand staff with piano and bass clefs and various chord symbols.

(Gouphano) (a) ENAS (Gouphano) (a)

n a j o B u r l e s s o f e u v e s | k i r a n a r e v a r y v i r t u e s p r o f | B e a t i n o u v a r a n d i f a m i s

Musical notation for the fourth system, including a grand staff with piano and bass clefs and various chord symbols.

(An. puro)

B To' ma Si' koi oi' wiffa, labbing' anicifia' ma'
 Kai' ap' isa' niamun, on' i'ho' dai' jama'

A Ona' kama' anicifia' dai' fap'is, ni' s'okap'wa, kai' an'p'ia' kai' n'p'ia'wa
 Kai' an'p'ia' dai' kai' ni'w' w'ap'o' ni' j'ac'v' ni' f'ap'wa'
 w'ap'is' w'ap'is' ni'w' w'ap'wa, s'oa' w'ic'and' s'k'ar'at'
 Kai' f'ap'is' ni'w' f'ap'ar'at'om' kai' ni'w' f'ap'wa, kai' j'ac'v'.

Allegro

$\frac{2}{4}$

Ona'

Ma' ni' pa' k'ia'at' S'is' o' k'ap' f'ia' w'ap'o' pi' ni' f'ac'va' ni' wa' T'ac'ip'ia'

$\frac{2}{4}$

Ta' k'ar'at' pa'

