

Ο ΕΧΘΡΟΣ ΛΑΟΣ

ΙΑΚΩΒΟΣ ΚΑΜΠΑΛΙΔΗΣ

ΜΙΚΗΣ ΓΕΩΡΓΙΑΔΗΣ

ΠΡΩΤΟ ΧΟΡΙΚΟ

Handwritten musical notation on a five-line staff, including a treble clef and a key signature of one sharp (F#).

Handwritten musical notation on a five-line staff, including a treble clef and a key signature of one sharp (F#). The notation includes rhythmic values and stems.

Handwritten musical notation on a five-line staff, including a bass clef and a key signature of one sharp (F#).

Handwritten musical notation on a five-line staff, including a treble clef and a key signature of one sharp (F#). The notation includes rhythmic values and stems.

Handwritten musical notation on a five-line staff, including a treble clef and a key signature of one sharp (F#). It includes the Greek lyrics: *Τὸν ἔχθρὸν σου ἀπέπεσε τὰς πτερυγίας*

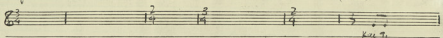
Handwritten musical notation on a five-line staff, including a bass clef and a key signature of one sharp (F#).

Handwritten musical notation on a five-line staff, including a treble clef and a key signature of one sharp (F#). It includes the Greek lyrics: *τὸν ἔχθρὸν σου ἀπέπεσε τὰς πτερυγίας*. Above the staff, there is a handwritten note: *(Προσφώνη)*. At the end of the line, there is a handwritten note: *(C.F.E.)*.

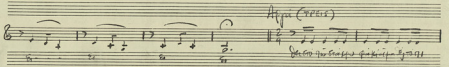
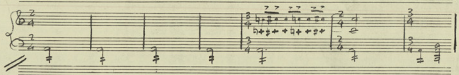
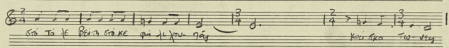
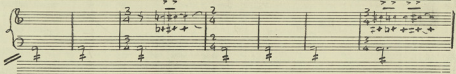
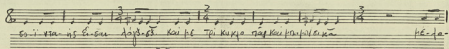
Handwritten musical notation on a five-line staff, including a bass clef and a key signature of one sharp (F#).

Allievo

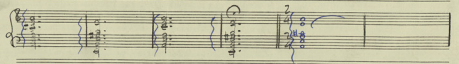
(OADI)



Strazivo



Allegro (rit.)



quasi c. b. solo

5.

A *Andante*

Key qoi kai noa

A *Andante*

Kai qoi kai noa

Kai qoi kai noa

B

Kai qoi kai noa

C *Andante*

Kai qoi kai noa

C *Andante*

Kai qoi kai noa

Allegro

C *Allegro*

Kai qoi kai noa

A

Kai qoi kai noa

B

Kai qoi kai noa

B

Kai qoi kai noa

(B)

lu nu te ai - fan
 E tai kau pou to xpa a vri - epu ipo xpa te ka nam

Si Si Si Mim
 Si Si nu pa pou ay ka for
 2 Trai w fu - jo tis Si oxi tu vi Si

Mim RE Mim Mim RE Mim Mim RE Mim
 o mi a fu mi fu to pu pa te for epi na te tu ti a i - Spu pa

Mim Rit... Solo Solo Solo
 o mi a fu

Mi LA Si Mi
 xpi kai xpi pa qy su qy - o pa - ti kau a per kau a se xpi xpi

Mi Mi LA LA Mi
 pa xpi qy e pa nu qy si ki a qy - as ba - n - gar

Si Mi Mi Si Si
 na te kai fai su - ke - tai pou kau qy si pa nu plase al e mi oi pa pa

Mi Solo Solo Solo Duetto
 qy usy to ka tai ki pa vi xpa - os qy vlu va si te - ro - te - ti pa

Duetto Solo F#m F#m
 na - yu na - yu - te - os na - yu si per ni en - co - na - yu - te

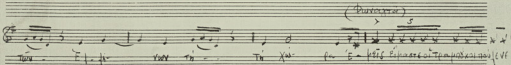
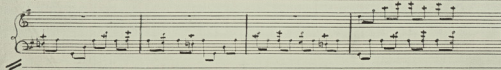
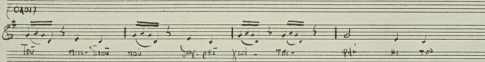
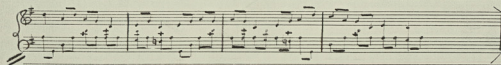
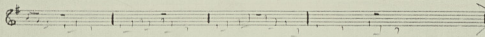
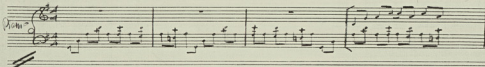
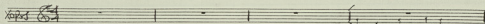
Solo Solo 3 Duetto 3 Solo 3 Duetto 3
 ki - bu - te ni en - co - na - yu - te ni - bu - te ni - bu - te ni - bu - te

" Ο ΕΧΘΡΟΣ ΛΑΟΣ "

ΓΑΒΡΙΕΛ ΚΑΜΠΑΝΕΛΟΣ

ΜΙΧΗΣ ΣΕΒΑΣΤΙΑΝΗΣ

ΠΡΩΤΟ ΧΟΡΙΚΟ



(Σπρονόμι)

3

Κι ἔπειτα ἐκεῖ δὲ τὸ πρῶτον ἦσαν οἱ ἴπποι καὶ ἀνεκράξαι ἠρᾶσι καὶ ἠρᾶσαι

ΕΝΑΓΓ

3

Ἐ γὰρ ἔπειτα τὸ πρῶτον ἦσαν οἱ ἴπποι καὶ ἀνεκράξαι ἠρᾶσι καὶ ἠρᾶσαι

ἦρᾶσαι

(ΟΛΟΙ)

Ἐπειτα δὲ καὶ οἱ ἄλλοι ἀνεκράξαι ἠρᾶσι καὶ ἠρᾶσαι

καὶ ἔπειτα οἱ ἄλλοι ἀνεκράξαι ἠρᾶσι καὶ ἠρᾶσαι

Handwritten musical notation on a single staff. The lyrics below the notes are: "Kto v se volny puzya" and "na zhe si vy puzya".

Piano accompaniment for the first system, showing chords and bass lines.

Handwritten musical notation on a single staff. The lyrics below the notes are: "Kto v se volny puzya" and "na zhe si vy puzya".

Piano accompaniment for the second system, showing chords and bass lines.

Handwritten musical notation on a single staff. The lyrics below the notes are: "Kto v se volny puzya" and "na zhe si vy puzya".

Piano accompaniment for the third system, showing chords and bass lines.

Handwritten musical notation on a single staff. The lyrics below the notes are: "Kto v se volny puzya" and "na zhe si vy puzya".

Piano accompaniment for the fourth system, showing chords and bass lines.

Allegro

(D.A. 1)

Handwritten musical notation for the vocal line, starting with a treble clef and a 3/4 time signature. The notation includes rests and notes with stems, and a fermata over the final note.

Handwritten musical notation for the piano accompaniment, starting with a bass clef and a 3/4 time signature. It features chords and rhythmic patterns with various articulation marks.

Vocal line with lyrics: "So i van is e i van Aja-ba-3 Kai ke Tri kupa rap Kai pa-pa-ka-ka".

Piano accompaniment for the second system, showing chords and rhythmic accompaniment.

Vocal line with lyrics: "So ta ke Pa-ka So-ke pa-ke-ya-ya".

Piano accompaniment for the third system, including chords and rhythmic accompaniment.

Allegro (P.P.E.L.)

Vocal line for the final section, starting with a treble clef and a 2/4 time signature.

Piano accompaniment for the final section, starting with a bass clef and a 2/4 time signature.

A *Allegretto*

Kui gae kinas *ArArArArArAr* pe' nra ve' rpa' nra'

B

Kui' gae' bu' rpa' nra' pe' nra' ve' rpa' nra'

A *Allegretto*

Kui' gae' bu' rpa' nra' pe' nra' ve' rpa' nra'

A

Kui' gae' bu' rpa' nra' pe' nra' ve' rpa' nra'

Allegretto

Kui' gae' bu' rpa' nra' pe' nra' ve' rpa' nra'

A

Kui' gae' bu' rpa' nra' pe' nra' ve' rpa' nra'

B

Kui' gae' bu' rpa' nra' pe' nra' ve' rpa' nra'

B

Kui' gae' bu' rpa' nra' pe' nra' ve' rpa' nra'

(B)

Handwritten musical notation on a grand staff. The vocal line includes the lyrics: "Si mi te ai-ta", "E tei kau pa to pa ai-va", and "E tei pa-va te ai-ta". The piano accompaniment features chords and rhythmic patterns.

Handwritten musical notation on a grand staff. The vocal line includes the lyrics: "Si Si pa pa pa pa", "Si", "Si", "Si", and "Mim". The piano accompaniment includes the lyrics: "Si Si pa pa pa pa", "Si", "Si", "Si", and "Si".

Handwritten musical notation on a grand staff. The vocal line includes the lyrics: "Mim", "RE Mim", "Mim", "RE Mim", "Mim", and "RE Mim". The piano accompaniment includes the lyrics: "Mim", "RE Mim", "Mim", "RE Mim", "Mim", and "RE Mim".

Handwritten musical notation on a grand staff. The vocal line includes the lyrics: "Mim", "Ri", and "Mim". The piano accompaniment includes the lyrics: "Mim", "Ri", and "Mim".

Handwritten musical notation on a grand staff. The vocal line includes the lyrics: "Mi", "LA", "Si", and "Mi". The piano accompaniment includes the lyrics: "Mi", "LA", "Si", and "Mi".

Handwritten musical notation on a grand staff. The vocal line includes the lyrics: "Mi", "Mi", "LA", "LA", and "Mi". The piano accompaniment includes the lyrics: "Mi", "Mi", "LA", "LA", and "Mi".

Handwritten musical notation on a grand staff. The vocal line includes the lyrics: "Si", "Mi", "Mi", "Si", and "Si". The piano accompaniment includes the lyrics: "Si", "Mi", "Mi", "Si", and "Si".

Handwritten musical notation on a grand staff. The vocal line includes the lyrics: "Mi", "Solo", "Solo", and "Dorm". The piano accompaniment includes the lyrics: "Mi", "Solo", "Solo", and "Dorm".

Handwritten musical notation on a grand staff. The vocal line includes the lyrics: "Dorm", "Solo", and "Piano". The piano accompaniment includes the lyrics: "Dorm", "Solo", and "Piano".

Handwritten musical notation on a grand staff. The vocal line includes the lyrics: "Solo", "Solo", "Piano", "Dorm", "Solo", and "Dorm". The piano accompaniment includes the lyrics: "Solo", "Solo", "Piano", "Dorm", "Solo", and "Dorm".