

ΜΗΝ ΠΑΝΤΕΛΕΙΞ ΤΗ ΜΟΝΑΧΙΑ - ΤΟΥ ΧΕΡΙΣΜΟΥ
(τραγούδι)

Moderato

Flute 8 $8^{11} \frac{3}{4}$

Piano $8^{11} \frac{3}{4}$

Flute 11 $8^{11} \frac{3}{4}$

Piano $8^{11} \frac{3}{4}$

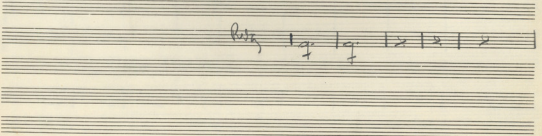
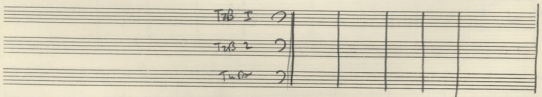
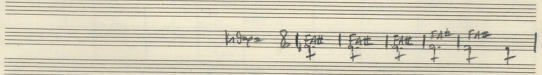
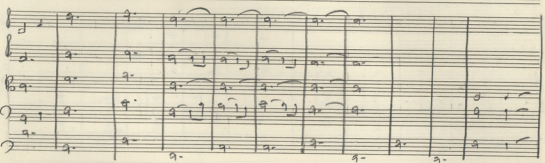
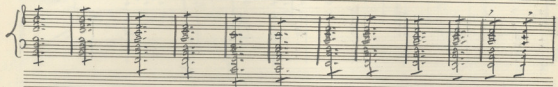
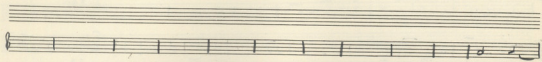
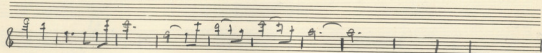
Violin I $8^{11} \frac{3}{4}$

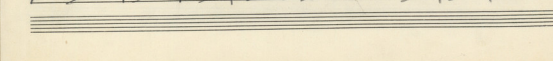
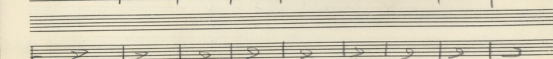
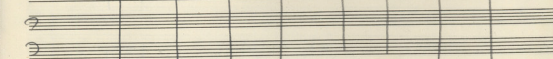
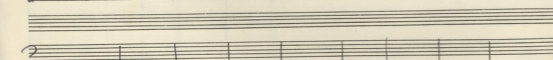
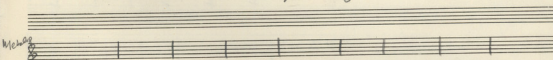
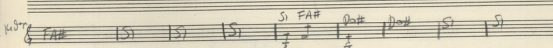
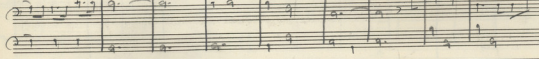
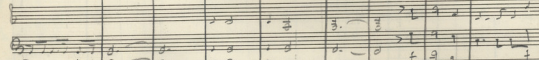
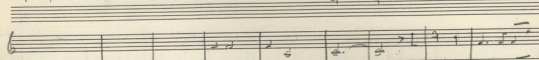
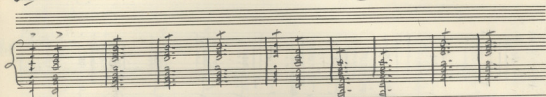
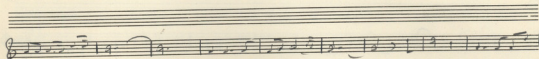
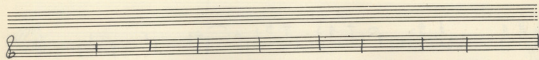
Violin II $8^{11} \frac{3}{4}$

Alto $8^{11} \frac{3}{4}$

Violoncello $8^{11} \frac{3}{4}$

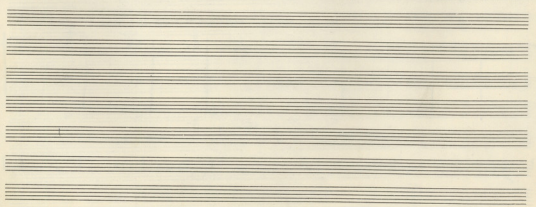
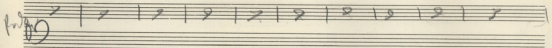
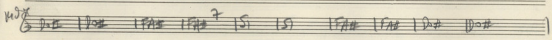
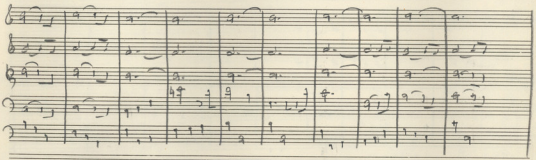
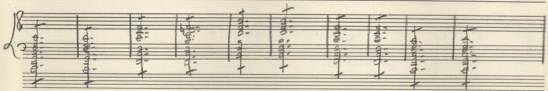
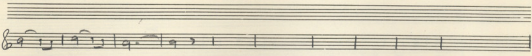
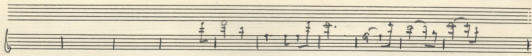
Contra $8^{11} \frac{3}{4}$





ΜΗ ΠΑΝΤΕΡΟΣ
ΤΗ ΜΟΝΑΧΙΑ

FA# FA# DO# DO# FA# FA# SI SI FA# FA#



7

S

S

S