

Handwritten title: *Handwritten text*

Handwritten tempo: *Handwritten tempo*

Handwritten number: (34A) *Handwritten text* 20

Handwritten musical notation on a grand staff (treble and bass clefs). Includes a tempo marking *F. marc.* and a time signature of 4/4. The notation consists of several measures of music with various notes and rests.

Handwritten musical notation on a grand staff, showing a few measures of music.

Handwritten musical notation on a grand staff, showing several measures of music.

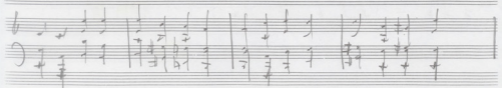
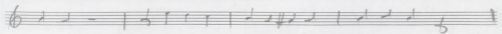
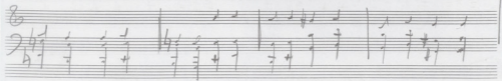
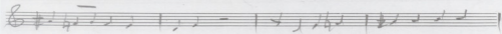
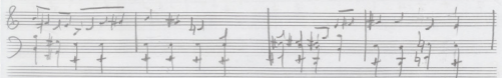
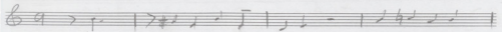
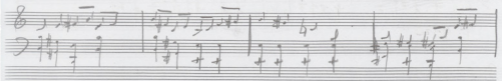
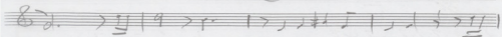
Handwritten musical notation on a grand staff, showing a few measures of music.

Handwritten musical notation on a grand staff, showing several measures of music.

Handwritten musical notation on a grand staff, showing a few measures of music.

Handwritten musical notation on a grand staff, showing several measures of music.

2 (34B)



3 (34C)

Handwritten musical notation on a single staff, featuring rhythmic values and accidentals.

Handwritten musical notation on a grand staff (treble and bass clefs), showing chords and melodic lines.

Handwritten musical notation on a single staff, featuring rhythmic values and accidentals.

Handwritten musical notation on a grand staff (treble and bass clefs), showing chords and melodic lines.

Handwritten musical notation on a single staff, featuring rhythmic values and accidentals, with a 'FINE' marking.

Handwritten musical notation on a grand staff (treble and bass clefs), showing chords and melodic lines.

Five empty musical staves, providing space for further notation.