

ΜΙΚΗ ΣΕΟΔΩΡΑΚΗ
ΔΙΟΝΥΣΟΣ

1. Η ΟΥΣΙΑ

Lento $\text{♩} = 52$

The first system of the handwritten musical score consists of three staves. The top staff is the vocal line, written in treble clef with a key signature of one flat (B-flat) and a 4/4 time signature. It begins with a whole rest, followed by a series of eighth notes: B-flat, A, G, F, E, D, C, B-flat. The second staff is the piano accompaniment, starting with a bass clef and a key signature of one flat. It features a series of chords: a whole chord of B-flat major (B-flat, D, F), followed by a whole chord of A minor (A, C, E), and then a whole chord of G major (G, B, D). The third staff continues the piano accompaniment with more complex chords and rhythmic patterns, including a whole chord of F major (F, A, C) and a whole chord of E minor (E, G, B).

The second system of the handwritten musical score consists of three staves. The top staff is the vocal line, continuing the melody from the first system with eighth notes: B-flat, A, G, F, E, D, C, B-flat. The second staff is the piano accompaniment, featuring a series of chords: a whole chord of B-flat major (B-flat, D, F), followed by a whole chord of A minor (A, C, E), and then a whole chord of G major (G, B, D). The third staff continues the piano accompaniment with more complex chords and rhythmic patterns, including a whole chord of F major (F, A, C) and a whole chord of E minor (E, G, B).

-2-

Handwritten musical notation for the first system, featuring a treble clef, a key signature of two flats, and a 3/4 time signature. The melody is written on a five-line staff with various notes and rests. Below the staff, there are several chords and bass notes, some with a '9' symbol. Above the staff, there are markings 'a', 'c', and 'c' with horizontal lines underneath them.

Handwritten musical notation for the second system, continuing the melody and bass line from the first system. It includes a treble clef, a key signature of two flats, and a 3/4 time signature. The notation shows a continuation of the melodic line and harmonic accompaniment.

Handwritten musical notation for the third system, showing more complex rhythmic patterns in the melody and bass line. It features a treble clef, a key signature of two flats, and a 3/4 time signature. There are many beamed notes and rests, and some markings like '9' and '7' are present.

Handwritten musical notation for the fourth system, continuing the piece with a treble clef, a key signature of two flats, and a 3/4 time signature. The notation includes various note values and rests, with some markings like '9' and '7'.

Handwritten musical notation for the fifth system, featuring a treble clef, a key signature of two flats, and a 3/4 time signature. The melody and bass line continue with various rhythmic figures.

Handwritten musical notation for the sixth system, the final system on the page. It includes a treble clef, a key signature of two flats, and a 3/4 time signature. The notation concludes the piece with various notes and rests.

Handwritten musical notation for the first system. It consists of a treble clef staff and a bass clef staff. The treble staff contains a melodic line with eighth and sixteenth notes, including a triplet of eighth notes. The bass staff contains chords and a triplet of eighth notes. A fermata is placed over the first measure of the second staff.

Handwritten musical notation for the second system. It consists of a treble clef staff and a bass clef staff. The treble staff contains a melodic line with eighth notes. The bass staff contains chords and a triplet of eighth notes.

Handwritten musical notation for the third system. It consists of a treble clef staff and a bass clef staff. The treble staff contains a melodic line with eighth notes. The bass staff contains chords and a triplet of eighth notes.

Handwritten musical notation for the fourth system. It consists of a treble clef staff and a bass clef staff. The treble staff contains a melodic line with eighth notes. The bass staff contains chords and a triplet of eighth notes.

Handwritten musical notation for the fifth system. It consists of a treble clef staff and a bass clef staff. The treble staff contains a melodic line with eighth notes. The bass staff contains chords and a triplet of eighth notes.

Handwritten musical score for guitar and bass. The top system features a guitar staff with a treble clef and a bass staff with a bass clef. The music includes various rhythmic patterns, including eighth and sixteenth notes, and rests. There are annotations such as '7' and '4' above the staves, and '3' and '7' above specific note groups. The bottom system shows a continuation of the piece with similar notation and a double bar line.

2 Η ΑΠΟΛΟΓΙΑ ΤΟΥ ΔΙΟΝΥΣΟΥ

Handwritten musical score for the piece "2 Η ΑΠΟΛΟΓΙΑ ΤΟΥ ΔΙΟΝΥΣΟΥ". The score is written for guitar and bass in 3/4 time. The tempo is marked "Lento". The music is in a key with one flat (B-flat major or D minor). The guitar part is written on a treble clef staff, and the bass part is written on a bass clef staff. The score includes a vocal line with lyrics in Greek: "Επιτακτα Χαιραι σαφαισιν οφθαλμοις και σπινθηροισιν οφθαλμοις". The music features a mix of eighth and sixteenth notes, with some rests and dynamic markings like "f". The score is divided into measures by vertical bar lines.

Handwritten musical score for the first system. It features a vocal line and two piano accompaniment lines. The lyrics are: "VOM him Kap Die heiligen XINTOS für sein Kampfer Sei". Above the first two measures, there is a bracket with the number "7" above it. The music is in 2/4 time and includes various musical notations such as notes, rests, and accidentals.

An Lento - = 90

ANTI-PROPH A

Handwritten musical score for the second system, labeled "ANTI-PROPH A". It includes a vocal line and two piano accompaniment lines. The lyrics are: "Ja ja va va veat - spantis san Di - a - va". The music is in 2/4 time and features a variety of rhythmic patterns and chordal textures.

Handwritten musical score for the third system. It contains a vocal line and two piano accompaniment lines. The lyrics are: "su is Kap ph ja ja va va ve spantis". The notation continues with complex rhythmic and harmonic structures.

Handwritten musical score for the fourth system. It shows a vocal line and two piano accompaniment lines. The lyrics are: "su is Kap ph ja ja va va ve spantis". The system concludes with a final cadence and a double bar line.

9

Handwritten musical notation on two staves. The top staff is in treble clef with a 3/8 time signature. The bottom staff is in bass clef. The music consists of several measures with various notes and rests.

Handwritten musical notation on two staves. The top staff is in treble clef with a 3/8 time signature. The bottom staff is in bass clef. The music continues with similar notation to the previous system.

Handwritten musical notation on two staves. The top staff is in treble clef with a 3/8 time signature. The bottom staff is in bass clef. The notation includes dynamic markings such as *pp* and *ppp*.

Handwritten signature and date:
 M. P. ...
 12.11.1998

Handwritten notes and signatures at the bottom of the page:

- 13.11.1998
- 14.11.1998
- 15.11.1998
- 16.11.1998
- 17.11.1998
- 18.11.1998
- 19.11.1998
- 20.11.1998
- 21.11.1998
- 22.11.1998
- 23.11.1998
- 24.11.1998
- 25.11.1998
- 26.11.1998
- 27.11.1998
- 28.11.1998
- 29.11.1998
- 30.11.1998

3. МІАФУАКН

lento 5 = 72

The image shows a handwritten musical score for a piece titled "3. МІАФУАКН". The tempo is marked "lento" with a metronome marking of 5 = 72. The score is written on six systems of two staves each. The top staff of each system is in treble clef, and the bottom staff is in bass clef. The key signature has one flat (B-flat). The music features a variety of rhythmic patterns, including eighth and sixteenth notes, and rests. There are several dynamic markings, such as "p" (piano) and "f" (forte), and articulation marks like slurs and accents. The notation is somewhat dense, with many notes and rests written in a cursive style. The piece concludes with a final chord in the bass staff of the last system.

Mia'pula ki mi mi'ng'p'raon w'e-ker
 Mia'pula ki mi

hi'p'hi'p'p'raon-ki

Xi'p'is'raon ki mi'ng'p'raon w'e-ker
 Kan si kan bay



ni pu ni pu ni pu ni pu

Σου Μαρτυροειν οτι Πιστη απολοιβεσθαι τον ουρανον και την γην και τον υδωρ και τα ζωα και τα κτηνη και τα οφθησια και τα κρυφθησια και τον ανθρωπον και τον οφιοντα τον ανθρωπον και τον οφιοντα τον ανθρωπον

ΑΙ ΟΣ ΥΟΙ ΒΑΤΙΘΕ ΚΑΙ ΟΙ ΠΑΙΔΕΣ ΤΗΣ ΕΚΚΛΗΣΙΑΣ

9/8

Handwritten musical notation for the first system, featuring a treble clef, a 9/8 time signature, and a key signature of one sharp (F#). The melody is written on a single staff with a slur over the first two measures. Below the staff, there are two lines of lyrics in a non-Latin script, likely Khmer.

Handwritten musical notation for the second system, featuring a treble clef and a 9/8 time signature. The melody continues on a single staff. Below the staff, there are two lines of lyrics in a non-Latin script.

Handwritten musical notation for the third system, featuring a treble clef and a 9/8 time signature. The melody continues on a single staff. Below the staff, there are two lines of lyrics in a non-Latin script.

Handwritten musical notation for the fourth system, featuring a treble clef and a 9/8 time signature. The melody continues on a single staff. Below the staff, there are two lines of lyrics in a non-Latin script.

Handwritten musical notation for the fifth system, featuring a treble clef and a 9/8 time signature. The melody continues on a single staff. Below the staff, there are two lines of lyrics in a non-Latin script.

Handwritten musical notation for the sixth system, featuring a treble clef and a 9/8 time signature. The melody continues on a single staff. Below the staff, there are two lines of lyrics in a non-Latin script.



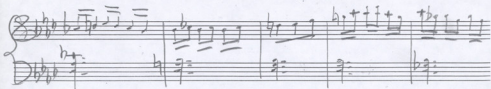
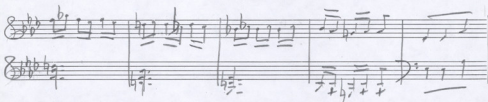
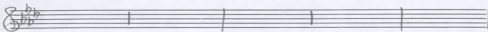
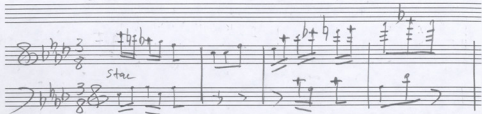
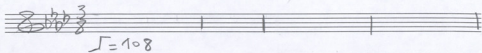
Handwritten musical notation for the first system, featuring a treble and bass staff. The treble staff contains a melodic line with notes and rests, including a fermata over a final note. The bass staff contains a bass line with notes and rests. Dynamic markings such as $>$ and ff are present. The system concludes with a double bar line.

Handwritten musical notation for the second system, showing a treble and bass staff. The treble staff features a rhythmic pattern of eighth notes. The bass staff contains a bass line with notes and rests. The system concludes with a double bar line.

Handwritten musical notation for the third system, including a treble staff with a melodic line and a bass staff with a bass line. The treble staff features a melodic line with notes and rests, including a fermata over a final note. The bass staff contains a bass line with notes and rests. The system concludes with a double bar line.

Handwritten musical notation for the fourth system, featuring a treble and bass staff. The treble staff contains a melodic line with notes and rests, including a fermata over a final note. The bass staff contains a bass line with notes and rests. The system concludes with a double bar line.

4. Το ΨΥΧΕΙΟ



Mhewtäg kap Siei hou pin kap Sro Xru náj
 O. Gor a ja Ma Seru Kai Turd em Vt kpat

Handwritten musical notation for the first system, including a treble clef, a key signature of two flats, and a 2/8 time signature. The notation includes a melodic line with a triplet of eighth notes and a bass line with chords and a triplet of eighth notes.

Ma kas Ma pa hu du Te. Jeiw sau nei fanj
 O. Gor Ma soku ni Seru En van o Su ja

Handwritten musical notation for the second system, including a treble clef, a key signature of two flats, and a 2/8 time signature. The notation includes a melodic line with a triplet of eighth notes and a bass line with chords and a triplet of eighth notes.

Su To te pu- vo sau o- loioja piq hol
 Ma Seru sro pu pa. a- van. Je Van paq

Handwritten musical notation for the third system, including a treble clef, a key signature of two flats, and a 2/8 time signature. The notation includes a melodic line with a triplet of eighth notes and a bass line with chords and a triplet of eighth notes.

Handwritten musical score for the first system. It consists of three staves. The top staff is a vocal line in G major with lyrics: "SE tou d'g | TE tou fu hi Xw pis Vou K'oum". The middle and bottom staves are piano accompaniment. The key signature has one sharp (F#) and the time signature is 3/8. The music includes triplets and various rhythmic patterns.

Handwritten musical score for the second system. It consists of three staves. The top staff is a vocal line with lyrics: "Nou an te Xou SE tou d'g". The middle and bottom staves are piano accompaniment. The key signature has one sharp (F#) and the time signature is 3/8. The music continues with triplets and rhythmic patterns.

Handwritten musical score for the third system. It consists of two staves. The top staff is a vocal line with lyrics: "SE tou d'g". The bottom staff is piano accompaniment. The key signature has one sharp (F#) and the time signature is 3/8. The music concludes with a final cadence.

Handwritten musical notation for the first system. The treble staff contains a sequence of notes with stems, and the bass staff contains notes and rests. Chord symbols $b7$ and $4\sharp$ are present. The system concludes with a double bar line and a fermata over a note.

Handwritten musical notation for the second system. The treble staff shows notes and rests, while the bass staff includes notes and rests. Chord symbols $b7$ and $A7$ are visible. The system ends with a double bar line and a fermata.

Handwritten musical notation for the third system. The treble staff contains notes and rests, and the bass staff contains notes and rests. The system concludes with a double bar line and a fermata.

15
 1998

5. H. ALPANDA

♩ = 136

Musica de la Sr. Sarpas
Musica de la Sr. Sarpas

2

Handwritten musical notation for the first system, featuring a vocal line and a guitar accompaniment line. The key signature has two sharps (F# and C#) and the time signature is 3/8. The lyrics are: *Se-vu yu-pa-rio tou- ho* and *gi-hou-ap- he de-ro*.

Handwritten musical notation for the second system, continuing the vocal and guitar parts. The time signature changes to 2/8 and then back to 3/8.

Handwritten musical notation for the third system, including a vocal line with lyrics: *Kai Sa-xo e-pu-xu-pi-ko-xo pi* and *te-dn du- he-rou-ka-pa-n-ae Xri*. The time signature is 3/8.

Handwritten musical notation for the fourth system, continuing the vocal and guitar parts. The time signature is 3/8.

Handwritten musical notation for the fifth system, including a vocal line with lyrics: *Ei-hou-arkou-xo e-pu-xu-pi-ko-xo pi* and *he-rou-ka-pa-n-ae Xri*. The time signature is 3/8.

Handwritten musical notation for the sixth system, continuing the vocal and guitar parts. The time signature is 3/8.



Handwritten musical score for the first system, featuring a vocal line and a piano accompaniment line. The key signature is two sharps (F# and C#) and the time signature is 2/8. The vocal line includes lyrics in Greek.

πλαναειν. ει δεησασεν τον κωδωνο του
 της εκκλησιας ησυχασει ησυχασει ησυχασει ησυχασει

Handwritten musical score for the second system, continuing the vocal and piano parts from the first system.

Handwritten musical score for the third system, featuring a vocal line and a piano accompaniment line.

Μεθυσθησιν οι οφθαλμοι σου και η καρδια σου
 ησυχασει ησυχασει ησυχασει ησυχασει

Handwritten musical score for the fourth system, featuring a vocal line and a piano accompaniment line.

Handwritten musical score for the fifth system, featuring a vocal line and a piano accompaniment line.

του οφθαλμου σου ησυχασει ησυχασει ησυχασει ησυχασει

Handwritten musical score for the sixth system, featuring a vocal line and a piano accompaniment line.



Handwritten musical notation on a grand staff (treble and bass clefs). The music features a melody in the treble clef and a bass line in the bass clef. The lyrics are written below the staff.

Ut hoc ii hoc est panis hie Bona ve

Handwritten musical notation on a grand staff. The melody continues in the treble clef, and the bass line provides accompaniment. The lyrics are written below the staff.

ra-ye a nra 94 va nro scu- w (Rit a la 2^o mlo)

Handwritten musical notation on a grand staff. The melody continues in the treble clef, and the bass line provides accompaniment. The lyrics are written below the staff.

ra-ye a nra 94 va nro scu- w (Rit a la 2^o mlo)

Handwritten musical notation on a grand staff. The melody continues in the treble clef, and the bass line provides accompaniment. The lyrics are written below the staff.

ra-ye a nra 94 va nro scu- w (Rit a la 2^o mlo)

Handwritten musical notation on a grand staff. The melody continues in the treble clef, and the bass line provides accompaniment. The lyrics are written below the staff.

ra-ye a nra 94 va nro scu- w (Rit a la 2^o mlo)

Handwritten musical notation on a grand staff. The melody continues in the treble clef, and the bass line provides accompaniment. The lyrics are written below the staff.

ra-ye a nra 94 va nro scu- w (Rit a la 2^o mlo)



6. ΣΤΙΣ ΔΕΚΑ ΤΩ ΔΕΜΙΤΟΝ

Andante
♩ = 50



Handwritten musical score for the first system. The vocal line is written on a single staff with a treble clef and a key signature of one flat (B-flat). The lyrics are: "A-mi-ni-ni-ye-sou-eu-ti-xi-phi-va" and "Min A-voi-ye-ou". The guitar accompaniment is on a single staff with a treble clef, showing chords and melodic lines.

Handwritten musical score for the second system. The vocal line continues with the lyrics: "per-jeu", "I-hou-jeus", "I-hou-ka", and "Kop-ha-a-". The guitar accompaniment continues with chords and melodic lines.

Handwritten musical score for the third system. The vocal line continues with the lyrics: "per-jeu", "I-hou-jeus", "I-hou-ka", and "Kop-ha-a-". The guitar accompaniment continues with chords and melodic lines.

Handwritten musical score for the fourth system. The vocal line continues with the lyrics: "per-jeu", "I-hou-jeus", "I-hou-ka", and "Kop-ha-a-". The guitar accompaniment continues with chords and melodic lines. The word "II VOLTA" is written at the end of the system.

Handwritten musical score for the fifth system. The vocal line continues with the lyrics: "per-jeu", "I-hou-jeus", "I-hou-ka", and "Kop-ha-a-". The guitar accompaniment continues with chords and melodic lines. The word "II VOLTA" is written above the system, and "FINE" is written at the end.

Handwritten musical score for the sixth system. The vocal line continues with the lyrics: "per-jeu", "I-hou-jeus", "I-hou-ka", and "Kop-ha-a-". The guitar accompaniment continues with chords and melodic lines. The word "II VOLTA" is written above the system, and "FINE" is written at the end.



$\sqrt{=112}$

27

29

F. O. P. B. O. T. T. A.

Handwritten musical notation for the first system, featuring treble and bass staves with complex rhythmic patterns and accidentals.

Handwritten musical notation for the second system, including triplets and various rhythmic markings.

Handwritten musical notation for the third system, showing melodic lines and bass accompaniment.

Empty musical staves.

Handwritten musical notation for the fourth system, including time signature changes to 2/8 and 3/8.

Handwritten musical notation for the fifth system, concluding with a double bar line.



Κυμνησου σα πησα σα Α-γι να
 Κατασφαιρα σα πησα σα φα νο σται σης

η-παντο-Τει μοιστα Κο ηση Ση
 ο ηου να να εδ παρκα, παρκα σης

ε-λας να ηι σι-λε και ηιαι φι να
 ηι εμ φου Χηρα ηη ηη ηη σι και σης

ou-ou-o-ou si a tro pt ch
 h kop sta paq fo vesi van ka xii

H ka Sa St ja sy pt sty van ju van Ben
 Th- ve kor- ter ju ske tra pa an ag van ras qu

E va aps so sy ju em sou Ba pa yu ei ju
 An in pa- tan aps so th ju em van so- tan sou

Handwritten musical score for the first system, featuring a vocal line and piano accompaniment. The key signature is one flat (B-flat), and the time signature is 3/8. The lyrics are in Greek.

Vocal Line:
 ΠΡΩΤΩΤΟΝ ΤΙ ΚΑΙ ΟΝ ΟΡΟΙΤΑΙ ΤΟΥ ΧΡΟΥ
 ΠΡΩΤΩΤΟΝ ΤΙ ΚΑΙ ΟΝ ΟΡΟΙΤΑΙ ΤΟΥ ΧΡΟΥ

Piano Accompaniment:
 The piano part consists of a treble and bass clef. The treble clef has a melodic line with slurs and ties. The bass clef has a simple accompaniment pattern.

Handwritten musical score for the second system, continuing the vocal and piano parts. The key signature remains one flat, and the time signature is 3/8.

Vocal Line:
 ΚΑΙ ΗΡΑΙ ΤΟΝ ΤΟΥ ΧΡΟΥ
 ΚΑΙ ΗΡΑΙ ΤΟΝ ΤΟΥ ΧΡΟΥ

Piano Accompaniment:
 Similar to the first system, with a melodic line in the treble and accompaniment in the bass.

Handwritten musical score for the third system, concluding the piece. The key signature is one flat, and the time signature is 2/8. The word "FINE" is written above the vocal line.

Vocal Line:
 ΕΙ ΗΡΑΙ ΤΟΝ ΧΡΟΥ
 ΕΙ ΗΡΑΙ ΤΟΝ ΧΡΟΥ

Piano Accompaniment:
 The piano part concludes with a final chord and a fermata.

Handwritten Notes:
 A large handwritten signature "Agnew" and the date "16.3.98" are written over the bottom of the page.

- 37 -

8. O KONIFOS

♩ = 116

sempre molto staccato

staccato

E-pi-ti-w-tes
E-pi-ti-yai-kon



0p - Kĩ - Ơ - Ơ - Voi
 (Ơ - Ơ - Ơ - Ơ)

Hinh - Kanh - Ơ - Koi - Tao Bpư Ta
 Hinh - Kanh - Ơ - Koi - Voi - Kĩ / Ơ

Ơ - Ơ - Ơ - Ơ - Ơ
 Ơ - Ơ - Ơ - Ơ - Ơ

Ơ - Ơ - Ơ - Ơ - Ơ
 Ơ - Ơ - Ơ - Ơ - Ơ

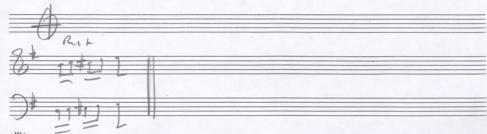
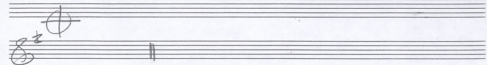
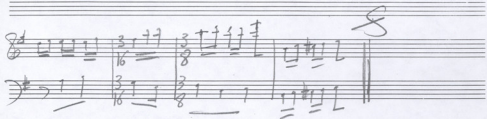
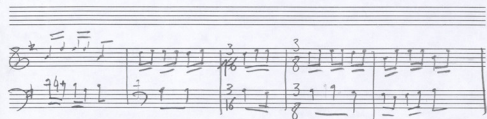
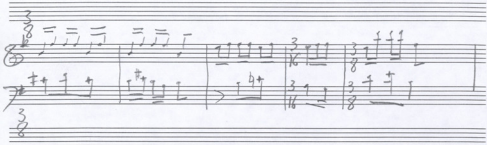
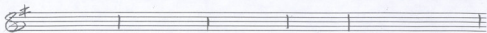
Ơ - Ơ - Ơ - Ơ - Ơ
 Ơ - Ơ - Ơ - Ơ - Ơ

Ơ - Ơ - Ơ - Ơ - Ơ
 Ơ - Ơ - Ơ - Ơ - Ơ

Handwritten musical score for the first system. The top staff is a vocal line in treble clef with a key signature of one sharp (F#) and a common time signature. The lyrics are in Greek: "oi epa. tiw tis ebu op- ki i sy tau po tt ki a pa- pu ta vor ki pa". The bottom two staves are a piano accompaniment in treble and bass clefs, featuring chords and rhythmic patterns. Time signatures change from 3/16 to 3/8.

Handwritten musical score for the second system. The vocal line continues with the lyrics: "ni van- 5- 102 i- di w. ty kai sta te tis v. po ypa yw". The piano accompaniment continues with similar chordal and rhythmic structures. Time signatures are 3/16 and 3/8.

Handwritten musical score for the third system. The vocal line concludes with the lyrics: "hi apo sw ni ko sw yta kai sw ka ta di ka pa". The piano accompaniment ends with a double bar line and a circle symbol. Time signatures are 3/16, 3/8, and 3/16.



9 TH PHAMQUYNH NA THN KHAT

♩ = 116

Ôu Sây hi M-ou h' E-Vác-
 Zou et ha P'ou f'ou er-
 Au tou ra f'ou h'et Si-Vou



Handwritten musical score for the first system. The top staff is a vocal line with lyrics: "su vi Ver-ov-rais" and "Ver TO su vi". The bottom staff is a piano accompaniment. The key signature has one sharp (F#) and the time signature is 3/8. The music features triplets and various rhythmic patterns.

Handwritten musical score for the second system. The top staff continues the vocal line with lyrics: "su vi Ver-to-rais". The bottom staff continues the piano accompaniment. The key signature has one sharp (F#) and the time signature is 3/8. The music includes a section with a circled note and a final double bar line.



$\text{♩} = 140$ 10. TA KPVSTAA TH ABUSO

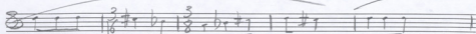
Un ta sta
Na fi ve

Xepia ka man pou pa na vna ka pou vna tou kos pou haves fai vs
 pou pou va pou pou de ommentis ko th th-va ka ka ka de

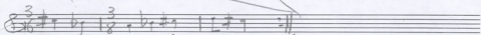
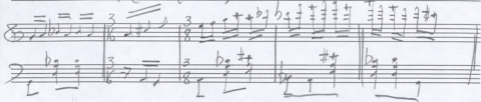
ai-va Boon pu-krai de Npt ca san Tap na ca va pu-
 ka va pu is pu is ca Npt ca san Tap na ca va A-

ti san pou do-ae Xay re. to tu pu ni san
 pu pu pou pou pou pou pou pou pou pou pou pou

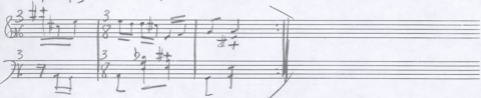




Meon an Tap ta en var ew ti row fawls ap
 Meon an Tap ta en A. Bu an pparan ois



par yk do ta fu ni row
 fu tis no pa pa Sei an



ΣΤΑΙ ΟΥΟΥΤ ΠΑ ΟΤΑΙ ΟΥΟΥΤ ΠΑ ΒΥΟΥΠΕ - ΒΑ
 ΤΑΙ ΚΟΣΠΙΟ - ΟΣ ΤΑΙ ΚΟΣΠΙΟ ΣΤ ΚΑΙ ΤΑ = ΤΕ

ΤΙ - ΠΕΚΥ ΤΑΙ ΤΙ ΠΕΚΥ ΤΑ ΤΕ Ο ΒΑ ΠΟΙ
 ΠΙΣ - ΚΑΝΤΑΚΑΠΙ ΠΙΣ ΟΥΟΥΤΑΚΑ ΠΙ ΣΑΥ ΤΑ ΟΥΟΥΤ
 ΟΥΟΥ ΚΑΙ ΠΙ

ΒΑ ΠΙΝΑΚΑΙ ΠΟ ΒΑ ΠΙΝΑΚΑΙ ΠΟ ΒΑ ΠΕ - ΒΑ
 ΠΟ ΒΑΙ ΧΑΙ - ΟΙ ΠΟ ΒΑΙ ΧΑΙ ΟΠΕ ΠΑΡΑΙ - ΟΙ

7/4

To - ho va | ra ra ho va | ra ra ho va | ra ra ho va



Tw - - pa to ne twpa to ne vo vo - - - vo

o - so ki'ow pou o so ki'ow yafis Sinda beis

no - so no voei o no - - - vo

FINE

FINE



Handwritten musical score for the first system, measures 1-4. The music is written on two staves: a treble clef staff with a key signature of one flat (Bb) and a 4/4 time signature, and a bass clef staff. The melody in the treble staff consists of eighth and quarter notes, with some beamed eighth notes. The bass staff contains chords and rests. A fermata is placed over the final measure of the system.

Handwritten musical score for the second system, measures 5-8. The treble staff continues the melody with eighth and quarter notes. The bass staff shows chords and rests. A fermata is placed over the final measure of the system.

Handwritten musical score for the third system, measures 9-12. The treble staff continues the melody. The bass staff shows chords and rests. A fermata is placed over the final measure of the system.

Handwritten musical score for the fourth system, measures 13-16. The treble staff continues the melody. The bass staff shows chords and rests. A fermata is placed over the final measure of the system.

12. TO TA EI SI

♩ = 104

Mia Sporki vici 17c Tpaio vor th oxi
 Παν i. Agn i. - Pa oxi pa. vi o

Δωι Sporki 11y 5uy xps Kavouciav
 Παν ηα Γω spa fo pa. - Kpu vi

Βαδην ης Τα πιν. φαηρο δε Χερ -
 τος θι δην Πι - α Χαν πε - τιν



o-
 an-

3
 16

OUVRE-PIER
 VOUS FA-RO
 OUF Vn
 OUF OUF

I VOLTA

Zi-Vous ne vous
 ne vous pas
 Ku-plea
 Ku-plea
 to
 OUF OUF
 I VOLTA

II VOLTA

III VOLTA
 Mi ple ku
 OUF OUF
 TUF PL
 VO TUF



Handwritten musical score for the first system, consisting of two staves. The top staff is in treble clef with a key signature of two flats (Bb, Eb) and a common time signature. It contains four measures of music with various notes, rests, and accidentals. The bottom staff is in bass clef with the same key signature and time signature, containing four measures of music with notes and rests. There are some markings above the notes in the top staff, possibly indicating fingerings or dynamics.

Handwritten musical score for the second system, consisting of two staves. The top staff is in treble clef with a key signature of two flats (Bb, Eb) and a common time signature. It contains four measures of music, ending with a double bar line and a fermata. The bottom staff is in bass clef with the same key signature and time signature, containing four measures of music with notes and rests. There are some markings above the notes in the top staff.

13. H 70M4H ZUNEXI ZETA 1

Lento $\text{♩} = 52$

Handwritten musical notation for the first system, measures 1-3. It features a treble clef, a 2/4 time signature, and a piano (p) dynamic marking. The melody is written in the treble clef with slurs and accents, and the bass clef contains chords. A '5' is written above the first two measures.

Handwritten musical notation for the second system, measures 4-6. It continues the melody and accompaniment from the first system. A '5' is written above the second measure.

Handwritten musical notation for the third system, measures 7-9. It continues the melody and accompaniment. A '6' is written above the eighth measure.

Handwritten musical notation for the fourth system, measures 10-12. It continues the melody and accompaniment. A '6' is written above the tenth measure.

Handwritten musical notation for the fifth system, measures 13-15. It continues the melody and accompaniment. A '9' is written above the thirteenth measure, and '5' is written above the fourteenth and fifteenth measures.



