

ΣΥΝΕΣ ΧΑΜΗΛΟΙ

Μινιός Θεοδώριδος

Allegro

Piano

Piatta  
JAA  
Tampere

4 Timpani Organo

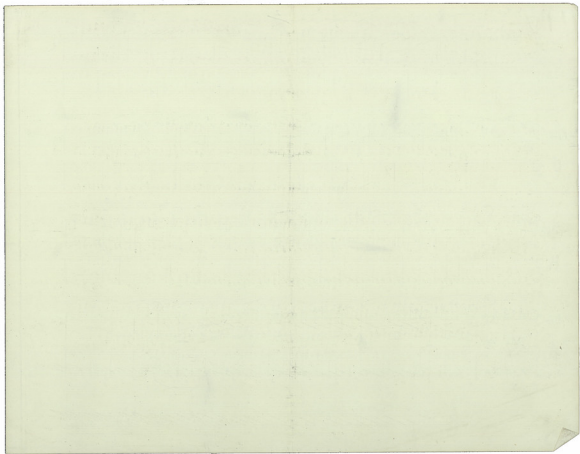
Handwritten musical score for the first system. It consists of two staves. The upper staff is for Piano, with a treble clef and a key signature of one flat. The lower staff is for Timpani and Organ, with a bass clef. The music is in 2/4 time and features a variety of rhythmic patterns, including eighth and sixteenth notes, and rests.

Handwritten musical score for the second system. It consists of two staves. The upper staff is for Piano, with a treble clef and a key signature of one flat. The lower staff is for Timpani and Organ, with a bass clef. The music continues with similar rhythmic patterns. A circled '1' is present above the piano staff, and the word 'rit.' is written above the second measure of the piano staff.

Handwritten musical score for the third system. It consists of two staves. The upper staff is for Piano, with a treble clef and a key signature of one flat. The lower staff is for Timpani and Organ, with a bass clef. The music continues with similar rhythmic patterns. The word 'rit.' is written above the piano staff.

Handwritten musical score for the fourth system. It consists of two staves. The upper staff is for Piano, with a treble clef and a key signature of one flat. The lower staff is for Timpani and Organ, with a bass clef. The music continues with similar rhythmic patterns. A circled '2' is present above the piano staff, and the word 'rit.' is written above the piano staff.

V. C.



Piano  
 Pian. *mf*  
 Timpani

This system contains the first two staves of music. The piano part is written in treble clef with a key signature of one flat and a 3/4 time signature. It features a complex rhythmic pattern with many sixteenth notes, some beamed together. There are several slurs and accents. A circled '3' indicates a triplet. The timpani part is in bass clef and consists of a series of quarter notes, mostly on a single pitch, with some rests. Dynamics include *mf* and *pp*.

Piano  
 Timpani

This system continues the piano and timpani parts. The piano part maintains its intricate sixteenth-note texture. There are some slurs and accents. The timpani part continues with a steady rhythm of quarter notes. Dynamics include *pp*.

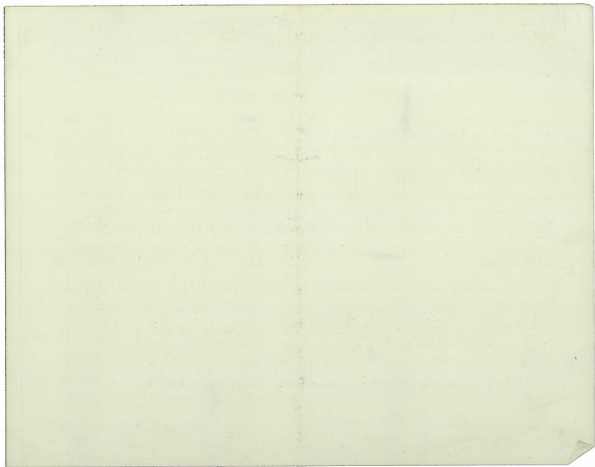
Piano  
 Timpani

This system continues the piano and timpani parts. A 'rit.' (ritardando) marking is present above the piano staff. The piano part shows some changes in articulation and dynamics. The timpani part continues with quarter notes. Dynamics include *pp* and *mf*.

Piano  
 Timpani

This system continues the piano and timpani parts. The piano part features a 'p' (piano) marking and a 'mf' (mezzo-forte) marking. The timpani part continues with quarter notes. Dynamics include *p* and *mf*.

This system shows the final two staves of music. The piano part continues with its sixteenth-note texture. The timpani part continues with quarter notes. Dynamics include *p* and *mf*.

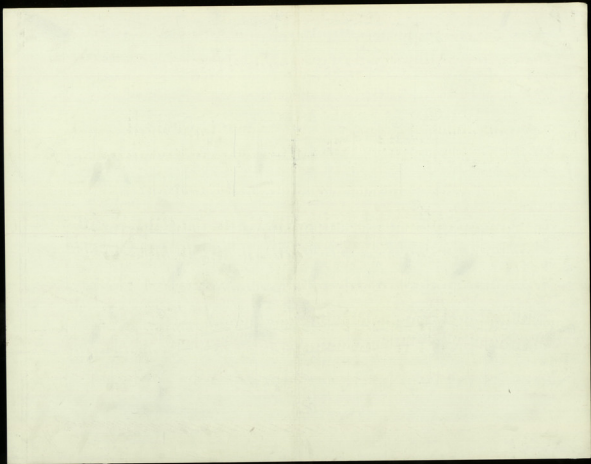


Handwritten musical score for Piano and Tympani. The score is written on two staves. The Piano part is in the upper staff, and the Tympani part is in the lower staff. The music features complex rhythmic patterns, including triplets and sixteenth notes. There are several circled annotations: a circled '3' above the first measure, a circled '6' above the second measure, and a circled '1' above the final measure. The page number '5' is written in the top right corner.

Handwritten musical score for Piano and Tympani. The score is written on two staves. The Piano part is in the upper staff, and the Tympani part is in the lower staff. The music features complex rhythmic patterns, including triplets and sixteenth notes. There are several circled annotations: a circled '6' above the first measure, a circled '3' above the second measure, and a circled '9' above the final measure. The page number '5' is written in the top right corner.

Handwritten musical score for Piano and Tympani. The score is written on two staves. The Piano part is in the upper staff, and the Tympani part is in the lower staff. The music features complex rhythmic patterns, including triplets and sixteenth notes. There are several circled annotations: a circled '3' above the first measure, a circled '9' above the second measure, and a circled '3' above the final measure. The page number '5' is written in the top right corner.

Handwritten musical score for Piano and Tympani. The score is written on two staves. The Piano part is in the upper staff, and the Tympani part is in the lower staff. The music features complex rhythmic patterns, including triplets and sixteenth notes. There are several circled annotations: a circled '3' above the first measure, a circled '9' above the second measure, and a circled '3' above the final measure. The page number '5' is written in the top right corner.



3) la seconda volta //

Piano *mf*

Violino *f*

Viola *f*

Piano *con*

Violino *f*

Viola *f*

Piano *mf*

Violino *f*

Viola *f*

Piano *mf*

Violino *f*

Viola *f*



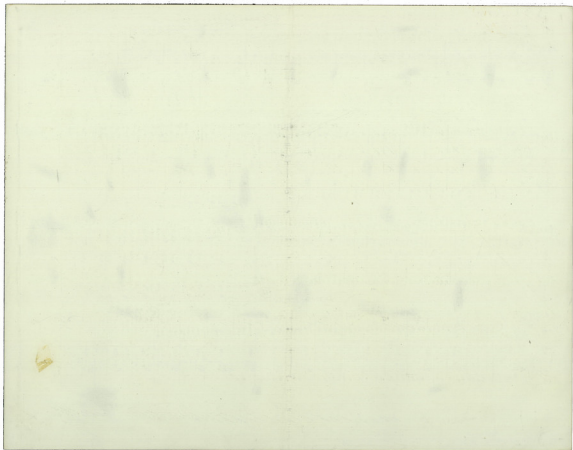


Handwritten musical score for the first system. It consists of three staves: Piano (top), Bass (middle), and Timpani (bottom). The Piano part features complex rhythmic patterns with many sixteenth and thirty-second notes. The Bass part has a steady eighth-note accompaniment. The Timpani part consists of a series of rhythmic pulses. There are some markings above the Piano staff, possibly indicating dynamics or articulation.

Handwritten musical score for the second system. It consists of three staves: Piano (top), Bass (middle), and Timpani (bottom). The Piano part continues with complex rhythmic patterns. A circled number '3' is written above the Piano staff in the middle of the system. The Bass part continues with its steady accompaniment. The Timpani part continues with its rhythmic pulses. There are some markings above the Piano staff, including the word "dolce" written in a cursive hand.

Handwritten musical score for the third system. It consists of three staves: Piano (top), Bass (middle), and Timpani (bottom). The Piano part continues with complex rhythmic patterns. A circled number '11' is written above the Piano staff in the middle of the system. The Bass part continues with its steady accompaniment. The Timpani part continues with its rhythmic pulses. There are some markings above the Piano staff, including the word "dolce" written in a cursive hand.

Handwritten musical score for the fourth system. It consists of three staves: Piano (top), Bass (middle), and Timpani (bottom). The Piano part continues with complex rhythmic patterns. A circled number '15' is written above the Piano staff in the middle of the system. The Bass part continues with its steady accompaniment. The Timpani part continues with its rhythmic pulses. There are some markings above the Piano staff, including the word "dolce" written in a cursive hand.



*cresc*

13

Piano

Timpani

14

Piano

Timpani

15

16

17

Piano

Timpani

*La seconda volta fu piano*

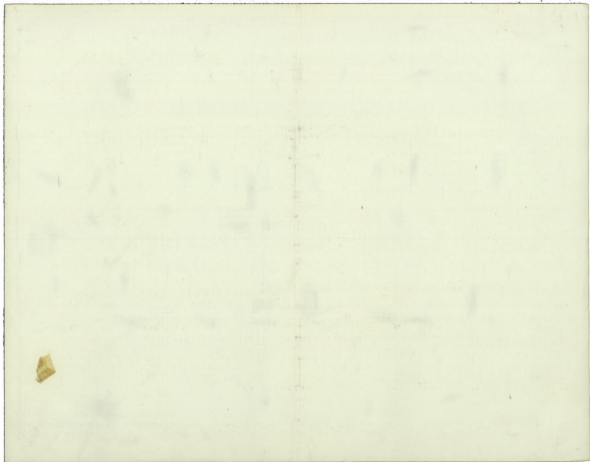
18

Piano

Timpani

*La seconda volta fu piano*

*mf/ff*



1

Piano  
Timp

Piano  
Timp

Piano  
Timp

Piano  
Timp

2

3

