

Handwritten title or name at the top right of the page.

Handwritten musical notation on multiple staves. The notation is extremely faint and illegible, appearing as light grey lines and shapes across the page.

# ΕΙΣΑΓΩΓΗ

Violino I

(A) Poco Andante

(B) *dim. p<sub>e</sub>* *p<sub>e</sub>* *p<sub>e</sub>* *p<sub>e</sub>*

55

(C) *p<sub>e</sub>* *Ris.* *e* *3* *4* *5*

6 7 8 *arco* (A)

8 *Ris.* *arco*

8 *FF* *piss.* *5.*

*All. = Moderato*

*FF* *mf*

6 *F*

(H)

mf

Fine mf

*molto marcato*

F marcato

*arco*

mf dolce

mf *ceci*

FF cantabile

4F *ceci* FF cantabile

Piss.

No 2

① *div.* *otto.* *pp*

*pp* *M* *unass.* *ppp* *poco*

*pp* *ppp* *morendo*

No 3

① *Allegro*

*pp* *p. cresc...*

*mf* *p*

*cresc.* *mf* *pp* ②

*pp* *pp* *cresc...*

dot#

4 4

6  
cresc.  
mf  
3

Poco più mosso

7 8 2 3 4 5 6  
3 3 3 3 3 3  
maestato

7 8 9 10 11 12 13  
3 3 3 3 3 3 3  
cresc. ...

14  
3  
pp cresc. mp dim. pp cresc. ...

4

mp dim. pp cresc. ...

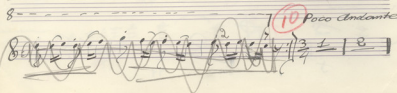
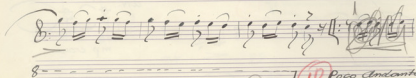
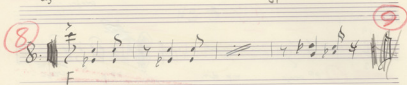
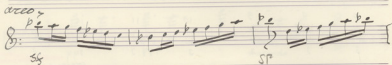
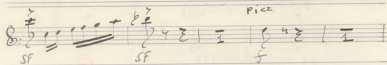
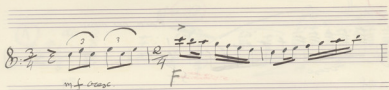
5

5 4 3 2 1  
S. subito  
6

div.  $\frac{4}{4}$   
mp cresc.

5  
7  
2 1 3/4 V.S.

7





No 4

*Andante*

Handwritten musical notation on a single staff, treble clef, key signature of two sharps (F# and C#), and 4/4 time signature. The notation consists of a sequence of eighth and quarter notes. Below the staff, there are three small vertical lines.

Handwritten musical notation on a single staff, treble clef, key signature of two sharps, and 4/4 time signature. The notation consists of a sequence of eighth and quarter notes.

Handwritten musical notation on a single staff, treble clef, key signature of two sharps, and 4/4 time signature. The notation consists of a sequence of eighth and quarter notes.

Handwritten musical notation on a single staff, treble clef, key signature of two sharps, and 4/4 time signature. The notation includes a section marked "Tutti Solo" with a circled letter "A" above it. The music features a series of chords and some sixteenth-note patterns.

Handwritten musical notation on a single staff, treble clef, key signature of two sharps, and 4/4 time signature. The notation includes a section marked "tutti" with a circled letter "B" above it. The music consists of a series of eighth notes.

Handwritten musical notation on a grand staff (treble and bass clefs), key signature of two sharps, and 4/4 time signature. The notation includes a section marked "I volta" and "II volta" with a circled letter "C" above it. The music features chords and a melodic line in the bass.

Handwritten musical notation on a grand staff (treble and bass clefs), key signature of two sharps, and 4/4 time signature. The notation includes a section marked "p." (piano) and features a series of chords and a melodic line in the bass. A red underline is present under the first few measures.

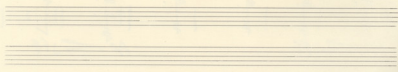


FINALE

44

Handwritten musical notation on a single staff. The notation begins with a treble clef and a common time signature (C). A dashed line above the staff spans the first four measures, with the word "FINALE" written above it. The first measure contains a half note chord with a dynamic marking of *pp* below it. The second measure contains a half note chord with a dynamic marking of *ff* below it. The third measure contains a half note chord with a dynamic marking of *ff* below it. The fourth measure contains a half note chord with a dynamic marking of *ff* below it. A double bar line follows the fourth measure. The fifth measure contains a half note chord with a dynamic marking of *pp* below it. The sixth measure contains a half note chord with a dynamic marking of *ff* below it. The piece concludes with a double bar line and repeat dots.

1872



15

Andante

No 5

8.  $\frac{3}{4}$  I | 2 | 3 | *div.*  $\frac{8}{8}$   $\frac{7}{8}$   $\frac{6}{8}$   $\frac{5}{8}$   $\frac{4}{8}$   $\frac{3}{8}$   $\frac{2}{8}$  | I

*ff*

8.  $\frac{7}{8}$   $\frac{6}{8}$   $\frac{5}{8}$   $\frac{4}{8}$   $\frac{3}{8}$   $\frac{2}{8}$  | 4 2 | I | 2 | 2 | 2 | 3 |

*ff*

16

8.  $\frac{7}{8}$   $\frac{6}{8}$   $\frac{5}{8}$   $\frac{4}{8}$   $\frac{3}{8}$   $\frac{2}{8}$  | 4 2 2 | I |  $\frac{7}{8}$   $\frac{6}{8}$   $\frac{5}{8}$   $\frac{4}{8}$   $\frac{3}{8}$   $\frac{2}{8}$  | 4 2 2 |

*ff* *ff*

17

8. 2 2 2 | P. | *Andante* *meno mosso* *meno mosso* *meno mosso* *meno mosso* *meno mosso* *meno mosso* *meno mosso* | P. P

18

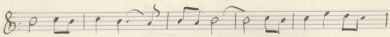
8. P. | *meno mosso* *meno mosso* *meno mosso* *meno mosso* *meno mosso* *meno mosso* *meno mosso* *meno mosso* | *f*

8.  $\frac{4}{4}$   $\frac{3}{4}$   $\frac{2}{4}$   $\frac{1}{4}$  | *ff*

8.  $\frac{4}{4}$   $\frac{3}{4}$   $\frac{2}{4}$   $\frac{1}{4}$  | *ff*

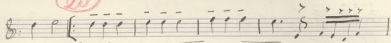
8.  $\frac{4}{4}$   $\frac{3}{4}$   $\frac{2}{4}$   $\frac{1}{4}$  | I | 2 | 3 |  $\frac{2}{4}$  | *V.S.*

Poco meno



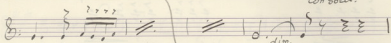
pp

20



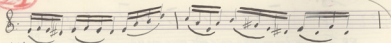
p

con sord.

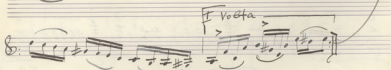
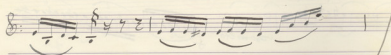


dim.

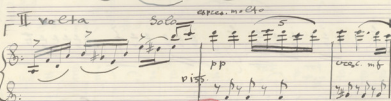
21



ppp



I Volta



II volta

Solo

cresc. molto

pp

pp

piss.

cresc. mf

22

pp

Handwritten musical score for the first system, consisting of four staves. The top staff is a treble clef with a 6-measure rest, followed by notes with dynamics *pp*, *dimin*, and *arco*. The second staff is a bass clef with notes and rests. The third and fourth staves are grand staves with piano and bass clefs, containing chords and rests. Dynamics include *mf* and *dimin.*

23  
*come iatti*  
*pppp*

Handwritten musical score for the second system, consisting of two staves. The top staff is a treble clef with notes and rests, dynamics *ppp*, *ppp*, and *ppp*, and tempo markings *Andante* and *arco*. The bottom staff is a bass clef with notes and rests.

24

Handwritten musical score for the third system, consisting of three staves. The top two staves are grand staves with piano and bass clefs, containing chords and notes. The bottom staff is a bass clef with notes and rests. Dynamics include *pppp* and *tutti*. A circled number 25 is present.

Handwritten musical score for the fourth system, consisting of two staves. The top staff is a grand staff with piano and bass clefs, containing chords and notes. The bottom staff is a bass clef with notes and rests. Dynamics include *pp* and *pp*. The word *Ivoeta* is written above the top staff. A circled number 25 is present.



32

8:  $\sharp\sharp$  *mf* *molto marcato*  
*F marcato*

33

8:  $\sharp\sharp$  *mf dolce*  
*deco*

8:  $\sharp\sharp$  *mf celer*

34

8:  $\sharp\sharp$  *FF cantabile*

8:  $\sharp\sharp$  *mf*

8:  $\sharp\sharp$  *FF cantabile*

8:  $\sharp\sharp$  *Piss*







3/4

*Solo*

43

*p.*

44

*Solo*

*ppp*

Σμπλοκός: Ποσειδάων ἄνεμος. Ἡαίματι καὶ ἀπὸ πλάτης

26 27 28 καὶ 29.

45

*arco*

*pp*

*dim.*

46

*Andante*

*pp*

*poco cresc.*

*pp*

47

*poco cresc.*

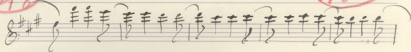
*mf*

*arco.*

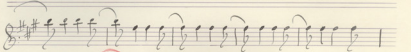
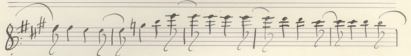
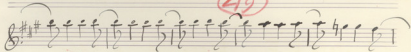
*mp*

48

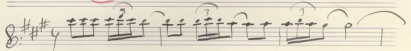
48A



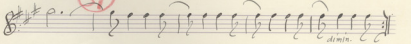
49



50



51



No 8

Amplificarsi: *tristemente* and *spiccatissimo*: (19) (20) (21)

(22) *kai* (23)

This page contains 14 horizontal musical staves, each consisting of five lines. The paper is aged and yellowed. Faint, ghostly impressions of handwriting are visible across the page, appearing to be bleed-through from the reverse side. The handwriting is mostly illegible but seems to include some rhythmic notations and possibly some text. There are also some very faint, larger markings at the top of the page, including the number '10' which is underlined.