

③

ΕΤΗ ΔΥΕΗ

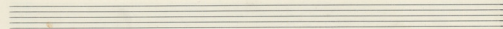
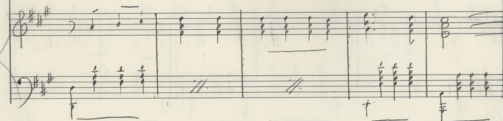
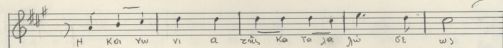
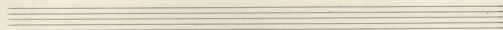
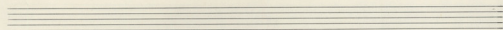
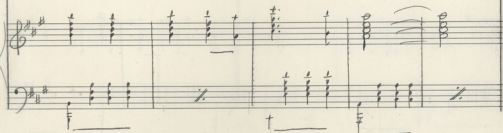
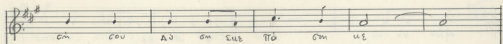
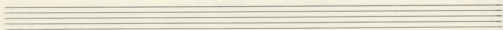
Handwritten musical score for the first system. The top staff is a vocal line in G major (one sharp) and 2/4 time. It begins with a whole rest, followed by a half note G, a quarter note A, a quarter note B, and a quarter note C. The lyrics are "Η α ΚΟ Η σου".

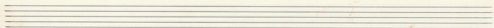
The middle and bottom staves are piano accompaniment. The middle staff has a treble clef and contains chords: a half note G chord, a half note A chord, a half note B chord, and a half note C chord. The bottom staff has a bass clef and contains chords: a half note G chord, a half note A chord, a half note B chord, and a half note C chord. There are repeat signs at the end of both piano parts.

Below the piano part, the text "II VOLTA OPX," is written.

Handwritten musical score for the second system. The top staff is a vocal line in G major and 2/4 time. It begins with a half note G, a half note A, a half note B, and a half note C. The lyrics are "ΑΥ ΟΥ σου λω σε Η ο πα".

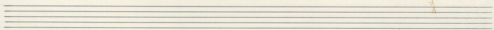
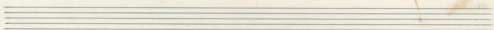
The middle and bottom staves are piano accompaniment. The middle staff has a treble clef and contains chords: a half note G chord, a half note A chord, a half note B chord, and a half note C chord. The bottom staff has a bass clef and contains chords: a half note G chord, a half note A chord, a half note B chord, and a half note C chord. There are repeat signs at the end of both piano parts.





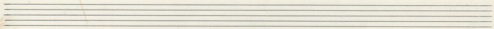
Musical notation with lyrics: Те же ба пу зят да же за ку

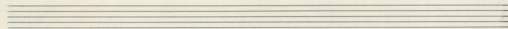
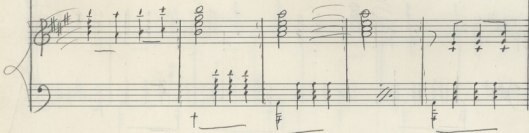
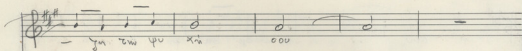
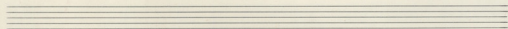
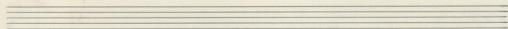
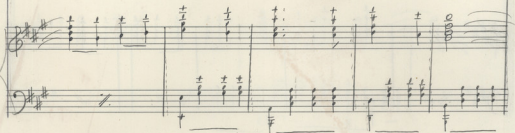
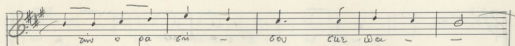
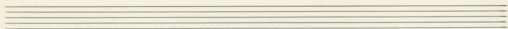
Accompanying piano chords and bass line for the first system.



Musical notation with lyrics: и соу Те же ба пу зят да же

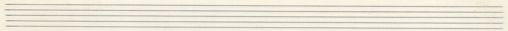
Accompanying piano chords and bass line for the second system.





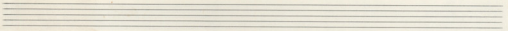
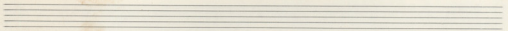
Handwritten musical score for the first system. The vocal line is in G major (one sharp) and 4/4 time. The lyrics are: *Ὁ πῶς ἔτι ἀπό σου ἔπειθ' αὐ δὲν ἔα*. The piano accompaniment consists of chords in the right hand and single notes in the left hand.

Handwritten musical score for the second system. The vocal line is in G major (one sharp) and 4/4 time. The lyrics are: *τὴν - σου τὰ γὰρ σου κεν εὐθὺς εὐθὺς*. The piano accompaniment consists of chords in the right hand and single notes in the left hand.



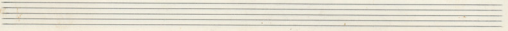
Handwritten musical notation in G major, 2/4 time. The melody is written in a treble clef. The lyrics are: "zoir ta rua no ca E m".

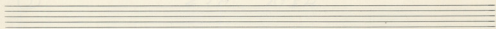
Handwritten piano accompaniment for the first system, including treble and bass clefs with chords and rhythmic markings.



Handwritten musical notation in G major, 3/4 time. The melody is written in a treble clef. The lyrics are: "zois se o m xa vi mas sou ta ca ju pin".

Handwritten piano accompaniment for the second system, including treble and bass clefs with chords and rhythmic markings.





Handwritten musical notation in treble clef, key signature of two sharps (F# and C#), and 2/4 time signature. The lyrics are: "κου θα σου πω πε το ψε - μα".

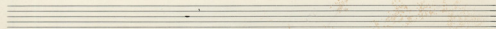
Handwritten musical notation in treble and bass clefs, showing chords and accompaniment for the first system.

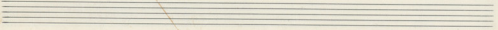
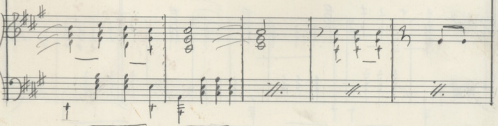
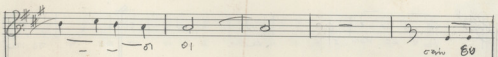
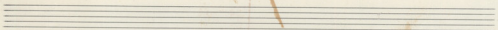
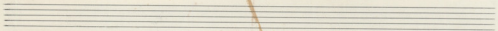
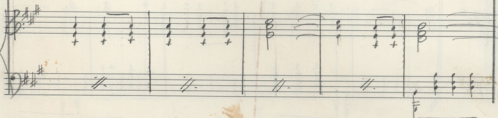
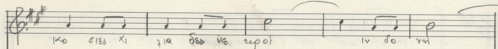
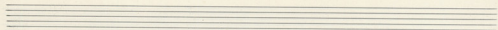


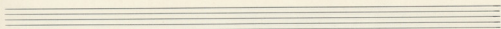
Handwritten musical notation in treble clef, key signature of two sharps, and 2/4 time signature. The lyrics are: "υ ωσ κρη σι . α" and "Τε ρεο".

3^{ος} φορας
3^{ος} πορα οφκ.

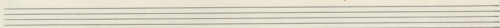
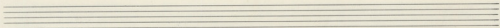
Handwritten musical notation in treble and bass clefs, showing chords and accompaniment for the second system.



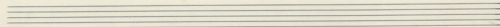


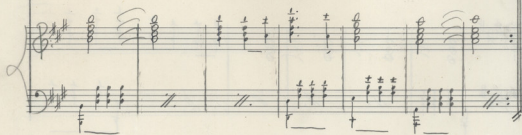
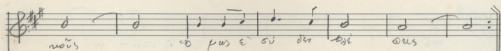
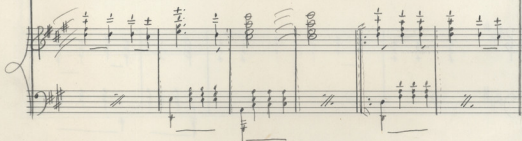


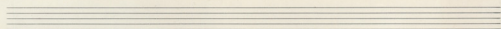
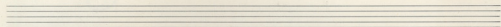
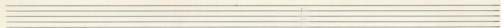
piś wni opa to we da supie reu



ws Bia r cma upo do jn







FIN