

ΗΡΘΑΝ Η ΑΝΘΡΩΠΟΙ ΜΕ ΤΑ ΜΑΥΡΑ.

5<sup>ε</sup>

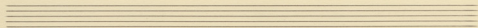
Handwritten musical score for the first system. It consists of a treble staff and a bass staff, both in G major (one sharp) and 4/4 time. The treble staff contains a melody with a repeat sign at the beginning. The bass staff provides a harmonic accompaniment with chords. There are two empty staves below the first system.

A single empty musical staff with a bar line.

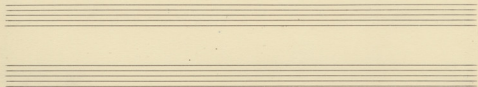
Handwritten musical score for the second system. It features a treble staff with two vocal lines. The first line has the lyrics "Τὸν ἔρα τοῦ ἐπιπέο" and the second line has "Τὴν παρὰ οὐρανῶν". Both lines are marked with Roman numerals I and II. The bass staff continues the accompaniment. There are two empty staves below the second system.

Handwritten musical score for the third system. It features a treble staff with two vocal lines. The first line has the lyrics "Τὸν ἔρα τοῦ ἐπιπέο" and the second line has "Τὴν παρὰ οὐρανῶν". Both lines are marked with Roman numerals I and II. The bass staff continues the accompaniment. There are two empty staves below the third system.

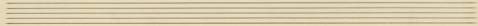
A single empty musical staff.



No pas kis yi vi sou vi go - - ua
   
 No pas
   
 noi sa pa jou - dia pas na



d.
   
 wvós zô A zzo ni é ün fi ô Apo pas
   
 vvós
   
 The pas ni jou ni pas Apo pas

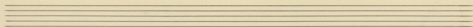


Handwritten musical notation for the first system. The top staff is a vocal line in G major (one flat) and 2/4 time. The lyrics are: *uís j' rí ñ wí upa uá òz vos*. The bottom staff is a piano accompaniment with chords. The lyrics *Kan zw A ya an ua òz vos* are written below the piano staff.

Handwritten musical notation for the second system, primarily piano accompaniment. The top staff has a melodic line with a *2<sup>a</sup> opXisera* marking. The bottom staff shows chordal accompaniment.

Handwritten musical notation for the third system. The top staff is a vocal line in G major (one flat) and 2/4 time. The lyrics are: *H pbar oia epw doi pi za fao pa* and *Ψα Χρον οζα òzr zpa uai oio Xw ka*. The bottom staff is a piano accompaniment with chords.

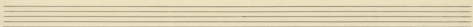
Handwritten musical notation for the fourth system, primarily piano accompaniment. The top staff has a melodic line. The bottom staff shows chordal accompaniment.



Handwritten musical notation in G major (one sharp) and 2/4 time. The melody is written on a treble clef staff. The lyrics are written below the staff.

Παρε Χωρ ουκ ερα οι σταλαγμοι του  
 Κιου ουκ ερα παρ Χωρ ουκ ερα Κεφ διου Χωρ

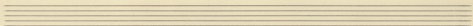
Handwritten musical notation in G major (one sharp) and 2/4 time. The accompaniment is written on a bass clef staff. The notes are mostly chords with stems pointing downwards.



Handwritten musical notation in G major (one sharp) and 2/4 time. The melody is written on a treble clef staff. The lyrics are written below the staff.

ωι αρωι ουκ ε Χωρ υσ ερα Χωρ ερα  
 Μα ερα ουκ ερα ουκ ερα

Handwritten musical notation in G major (one sharp) and 2/4 time. The accompaniment is written on a bass clef staff. The notes are mostly chords with stems pointing downwards.



Handwritten musical notation on a single staff. The key signature is three flats (B-flat, E-flat, A-flat) and the time signature is 4/4. The lyrics are written below the notes.

τε παρ και υπαν το οσο και το  
Με πα στα παρτα και στα Αα -

Handwritten musical notation on two staves. The top staff continues the melody from the previous system. The bottom staff contains a bass line with chords and stems.

Handwritten musical notation on a single staff. The key signature is three flats and the time signature is 4/4. The lyrics are written below the notes.

γα - - - - - τοος  
- - - - - υπαν α παρ.

Handwritten musical notation on two staves. The top staff continues the melody. The bottom staff contains a bass line with chords and stems. The notation ends with a double bar line and the instruction "D.C. (ENDOSATE)" with an arrow pointing to the right.

D.C. (ENDOSATE) →