



28 Subl. dolce

Musical staff with notes and circled measure numbers 29, 30, 31, 32, 33, 34, 35.

Musical staff with notes, circled measure numbers 36, 37, 38, and dynamic markings *ff* and *allegro*.

Musical staff with notes, circled measure number 39, and dynamic markings *mf*, *mf*, and *pp* *allegro*.

Musical staff with notes and dynamic markings *mf* and *mf*.

Musical staff with notes and circled measure number 41.

Musical staff with notes, circled measure number 42, and dynamic markings *pp* and *pp*.

Musical staff with notes and dynamic markings *pp* and *pp*.

Musical staff with notes, circled measure number 43, and dynamic markings *pp* and *pp*.

Musical staff with notes, circled measure number 44, and dynamic markings *pp* and *pp*.

Musical staff with notes, circled measure number 45, and dynamic markings *f* and *f*.

Musical staff with notes, circled measure number 46, and dynamic markings *f* and *f*.

Musical staff with notes, circled measure number 47, and dynamic markings *f* and *f*.

*largo* *allegro molto*

volta *Prato*

al >

o czer - c c - u - do

mf

60

gua

61

mf

65 *piu Mosso*

65

66

66

67

67

68

68

69

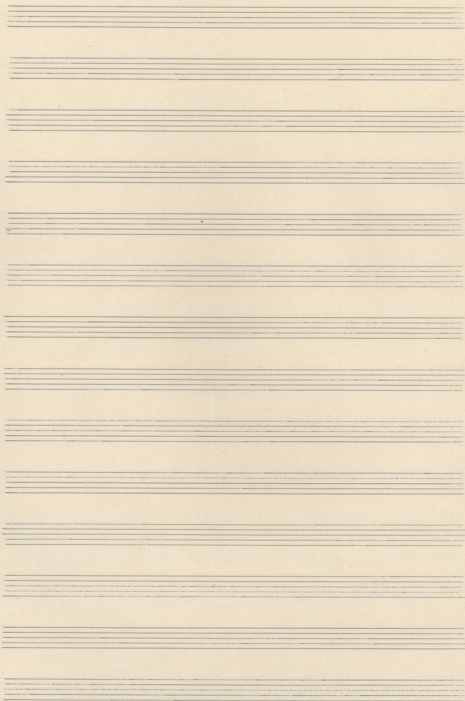
69

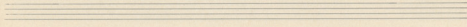
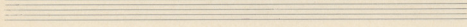
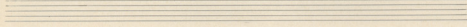
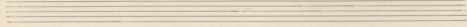
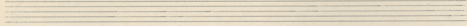
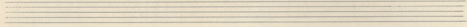
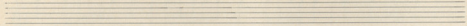
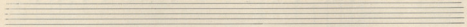
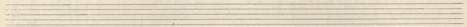
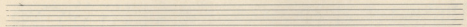
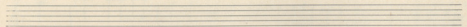
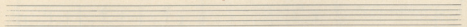
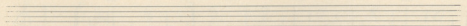
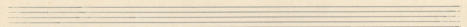
velta

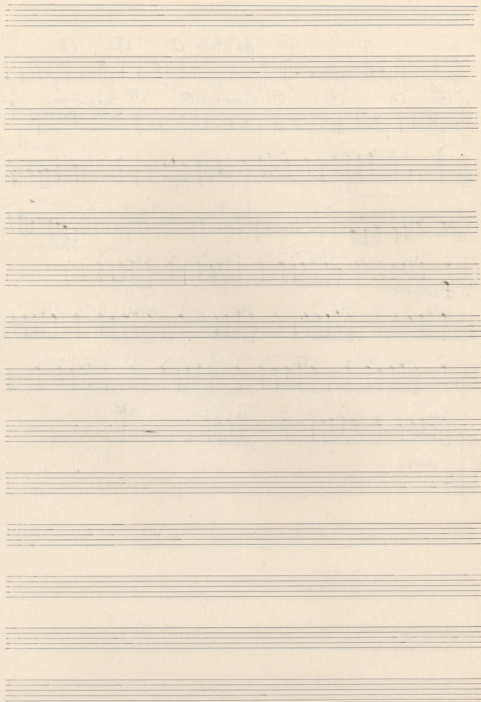
215

Handwritten musical notation on a single staff. It begins with a treble clef and a red 'f' dynamic marking. The notation includes several measures of music with various note values and stems. A series of red arrows points to the right above the staff, indicating a melodic line. The piece concludes with a double bar line, a repeat sign, and the word 'fine' written in cursive.

Ten empty musical staves arranged vertically on the page.







Clarinete in Sib  
ΕΝΕΡΓΕΙΟ ΚΑΙ ΘΡΑΝΟΣ

Handwritten musical score for Clarinet in B-flat. The score is written on a grand staff with two treble clefs. The key signature has two flats (B-flat and E-flat). The time signature is 3/4. The score is divided into measures numbered 1 through 16. Performance instructions include: *All.<sup>o</sup> Molto* (measures 1-4), *Tempo 1* (measures 9-10), *Poco più mosso* (measure 11), and *Molto espressiva* (measures 11-16). Dynamics include *ff* (fortissimo) and *f sempre* (f marcato sempre). The score features various rhythmic patterns, including triplets and sixteenth-note runs. A *CRIST.* (Crescendo) marking is present above measure 8. The score concludes with a fermata and a final note in measure 16. Below the main staff, there are four empty staves, the first of which is marked *smorz.* (smorzando).