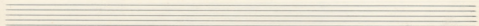
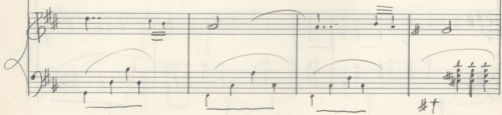
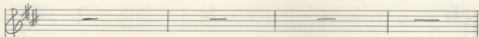
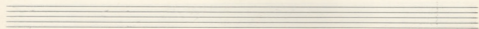
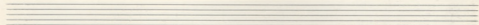
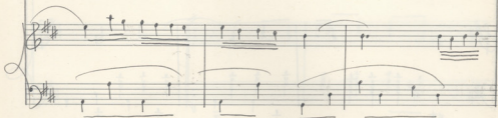
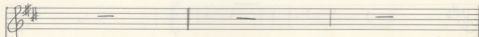
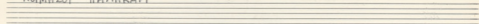
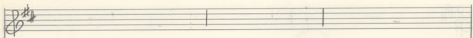
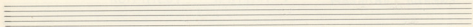


ΚΟΙΜΗΣΟΥ ΠΑΛΗΚΑΡΙ

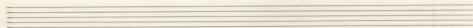
Handwritten musical score for the piece "ΚΟΙΜΗΣΟΥ ΠΑΛΗΚΑΡΙ". The score is written on five systems of staves. The first system includes a treble clef, a key signature of two sharps (F# and C#), and a 3/4 time signature. A tempo marking of  $\text{♩} = 80$  is present. The first measure of the first system contains a circled number "5". The second system contains a circled number "5" above the staff. The score features various musical notations including rests, notes, beams, and slurs. The bottom two systems show more complex melodic and harmonic development with multiple notes and slurs.

ΚΟΙΜΗΣΟΥ ΤΑΛΗΚΑΡΙ

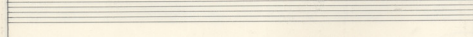




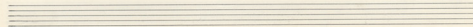
A system of musical notation. The top staff contains a treble clef, a key signature of two sharps, and a melody starting with a dotted quarter note followed by an eighth note, then a half note, and finally a whole note. The bottom staff contains a bass clef, a key signature of two sharps, and a bass line with three chords marked with a dagger symbol (†) and a horizontal line below them. The first chord is a triad of F#, C#, and G. The second and third chords are also triads, with the second being F#, C#, and G, and the third being F#, C#, and G.

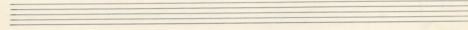
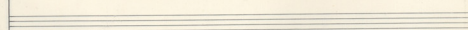
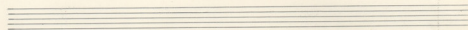
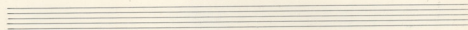
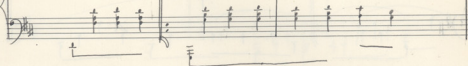
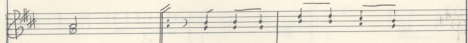
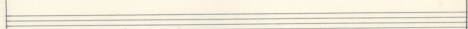
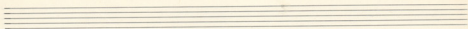


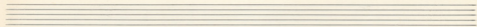
A system of musical notation. The top staff contains a treble clef, a key signature of two sharps, and a melody starting with a quarter rest, followed by a quarter note, a quarter note, a quarter note, a quarter note, a half note, and a quarter note. The bottom staff contains a bass clef, a key signature of two sharps, and a bass line with a quarter rest, followed by a quarter note, a quarter note, a quarter note, a quarter note, a half note, and a quarter note.



A system of musical notation. The top staff contains a treble clef, a key signature of two sharps, and a melody starting with a quarter rest, followed by a quarter note, a quarter note, a quarter note, a quarter note, a half note, and a quarter note. The bottom staff contains a bass clef, a key signature of two sharps, and a bass line with a quarter rest, followed by a quarter note, a quarter note, a quarter note, a quarter note, a half note, and a quarter note.



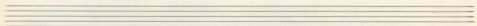
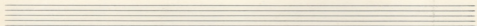
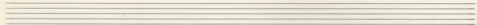




I VOLTA

I VOLTA

I VOLTA



Handwritten musical score for the first system. It consists of two staves: a treble clef staff on top and a bass clef staff on the bottom. The key signature is one sharp (F#) and the time signature is common time (C). The treble staff contains a melody of quarter and eighth notes. The bass staff contains a bass line with some notes beamed together and a long slur spanning across the first two measures.

Handwritten musical score for the second system. It consists of two staves: a treble clef staff on top and a bass clef staff on the bottom. The key signature is one sharp (F#) and the time signature is common time (C). The treble staff contains a melody with a circled 'S' symbol above the final measure. The bass staff contains a bass line with notes beamed together and a long slur. A circled 'S' symbol is also present above the final measure of the bass staff.