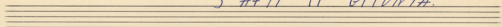


ELEFTERIΩV ΜΑΝΩΣ  
THEODORAKIS MIKIS

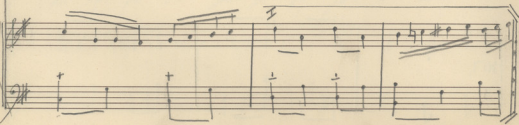
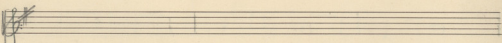
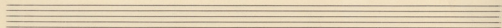
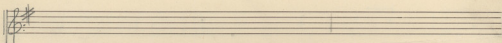
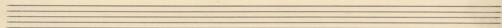
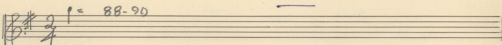
-1-

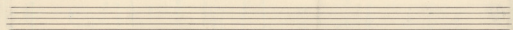
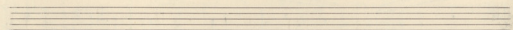
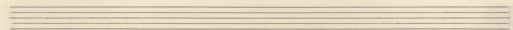
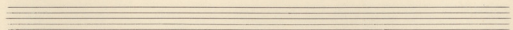
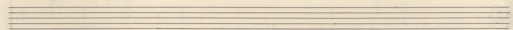
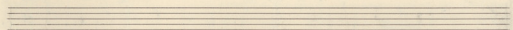
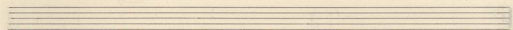
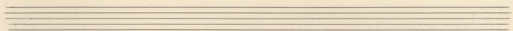
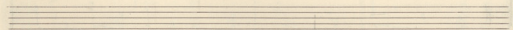
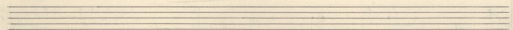
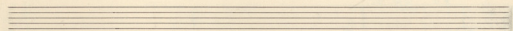
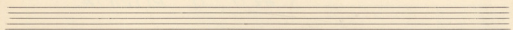
B 6<sup>6</sup>

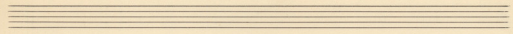
ΣΑΦΤΙ ΤΙ ΕΙΤΟΝΙΑ.



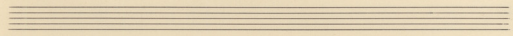
3



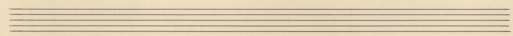




Εὐ-ρί-τι-μα-το-



να  
Εὐ-ρί-τι-μα-το- Εὐ-



ρί-τι-μα-το-να' και ἁγί-ου και ἁγί-ου

Handwritten musical score for the first system. It consists of three staves: a vocal line in G major (one sharp) and a piano accompaniment in G major. The vocal line begins with a fermata over a dotted quarter note, followed by the lyrics "τε- πα- ρα- με και αυ- ρα- με ο-". The piano accompaniment features a simple harmonic accompaniment with chords and moving bass lines.

Handwritten musical score for the second system. The vocal line continues with the lyrics "ζου- ζυ- πε ζυ- η. τε- πα- ρα- με και". The piano accompaniment continues with similar harmonic support, including some chordal textures.

Handwritten musical score for the third system. The vocal line concludes with the lyrics "αυ- ρα- με ο- ζου- ζυ- πε ζυ- η. —". The piano accompaniment ends with a final chord. The word "FIN" is written in the bottom right corner of the system.